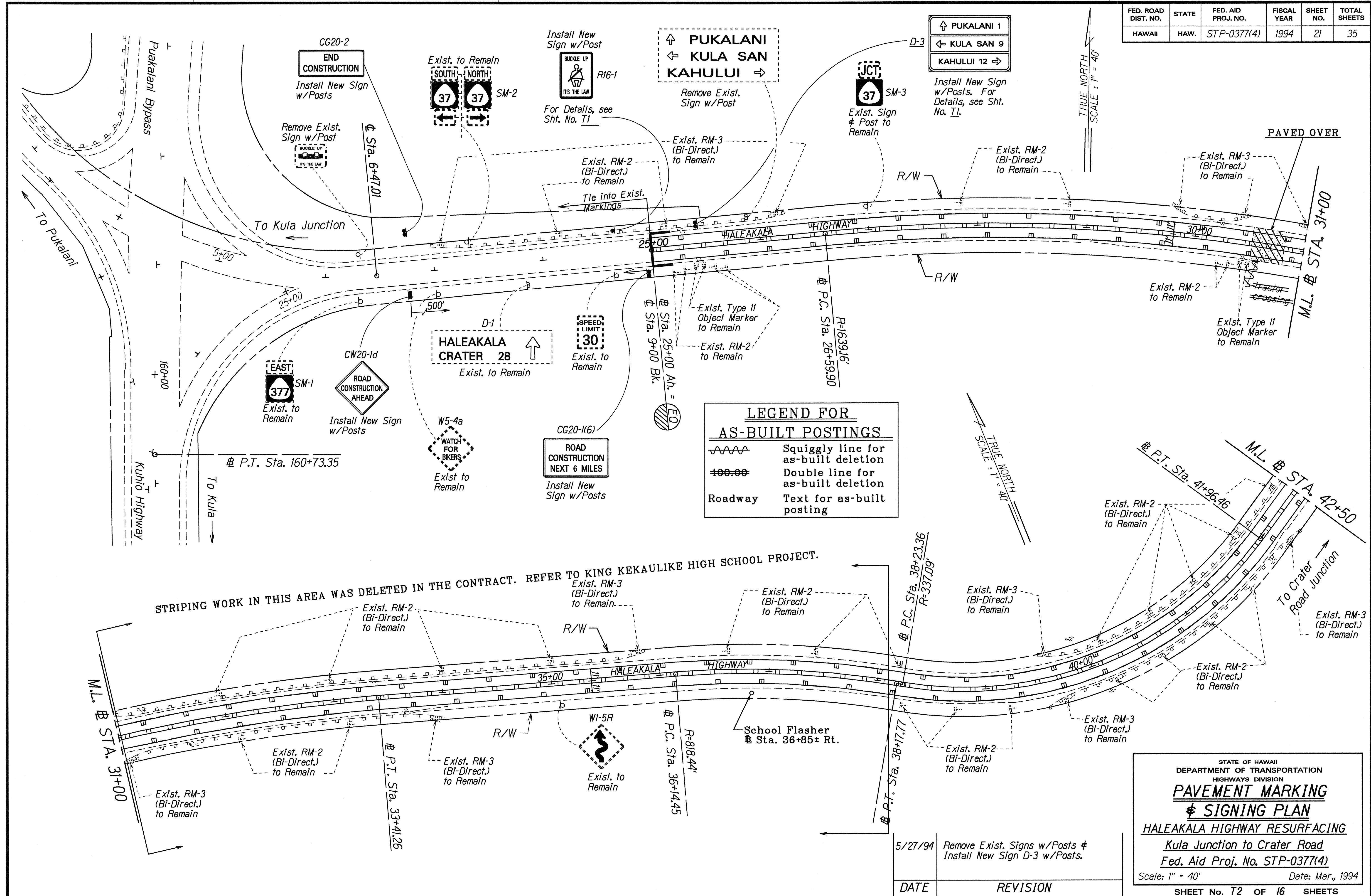


FED. ROAD DIST. NO.	STATE	FED. AID PROJ. NO.	FISCAL YEAR	SHEET NO.	TOTAL SHEETS
HAWAII	HAW.	STP-0377(4)	1994	21	35



LEGEND FOR AS-BUILT POSTINGS

~~~~~ Squiggly line for as-built deletion

=====~~====~~ Double line for as-built deletion

Roadway Text for as-built posting

| DATE    | REVISION                                                    |
|---------|-------------------------------------------------------------|
| 5/27/94 | Remove Exist. Signs w/Posts & Install New Sign D-3 w/Posts. |

STATE OF HAWAII  
DEPARTMENT OF TRANSPORTATION  
HIGHWAYS DIVISION

**PAVEMENT MARKING**  
**SIGNING PLAN**

HALEAKALA HIGHWAY RESURFACING  
Kula Junction to Crater Road  
Fed. Aid Proj. No. STP-0377(4)

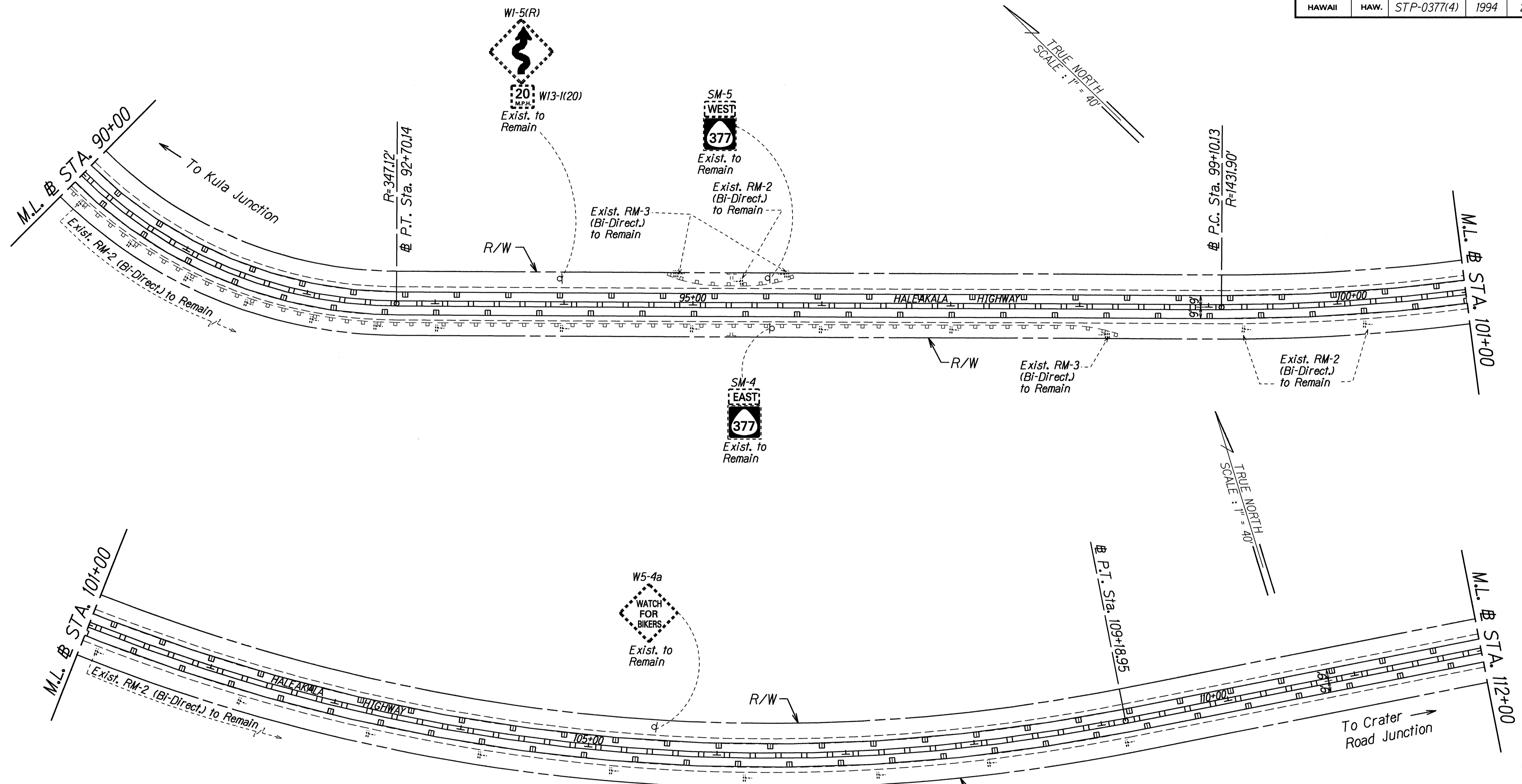
Scale: 1" = 40' Date: Mar., 1994  
SHEET No. T2 OF 16 SHEETS

DATE: 4/24/94  
SURVEY PLOTTED BY: [Name]  
DRAWN BY: [Name]  
DESIGNED BY: [Name]  
CHECKED BY: [Name]





| FED. ROAD DIST. NO. | STATE | FED. AID PROJ. NO. | FISCAL YEAR | SHEET NO. | TOTAL SHEETS |
|---------------------|-------|--------------------|-------------|-----------|--------------|
| HAWAII              | HAW.  | STP-0377(4)        | 1994        | 24        | 35           |



|               |                   |         |
|---------------|-------------------|---------|
| ORIGINAL PLAN | SURVEY PLOTTED BY | DATE    |
| TRACED BY     | DRAWN BY          | 3/29/94 |
| NOTES BOOK    | DESIGNED BY       |         |
| FILED         | REVISIONS BY      |         |
|               | CHECKED BY        |         |

STATE OF HAWAII  
DEPARTMENT OF TRANSPORTATION  
HIGHWAYS DIVISION

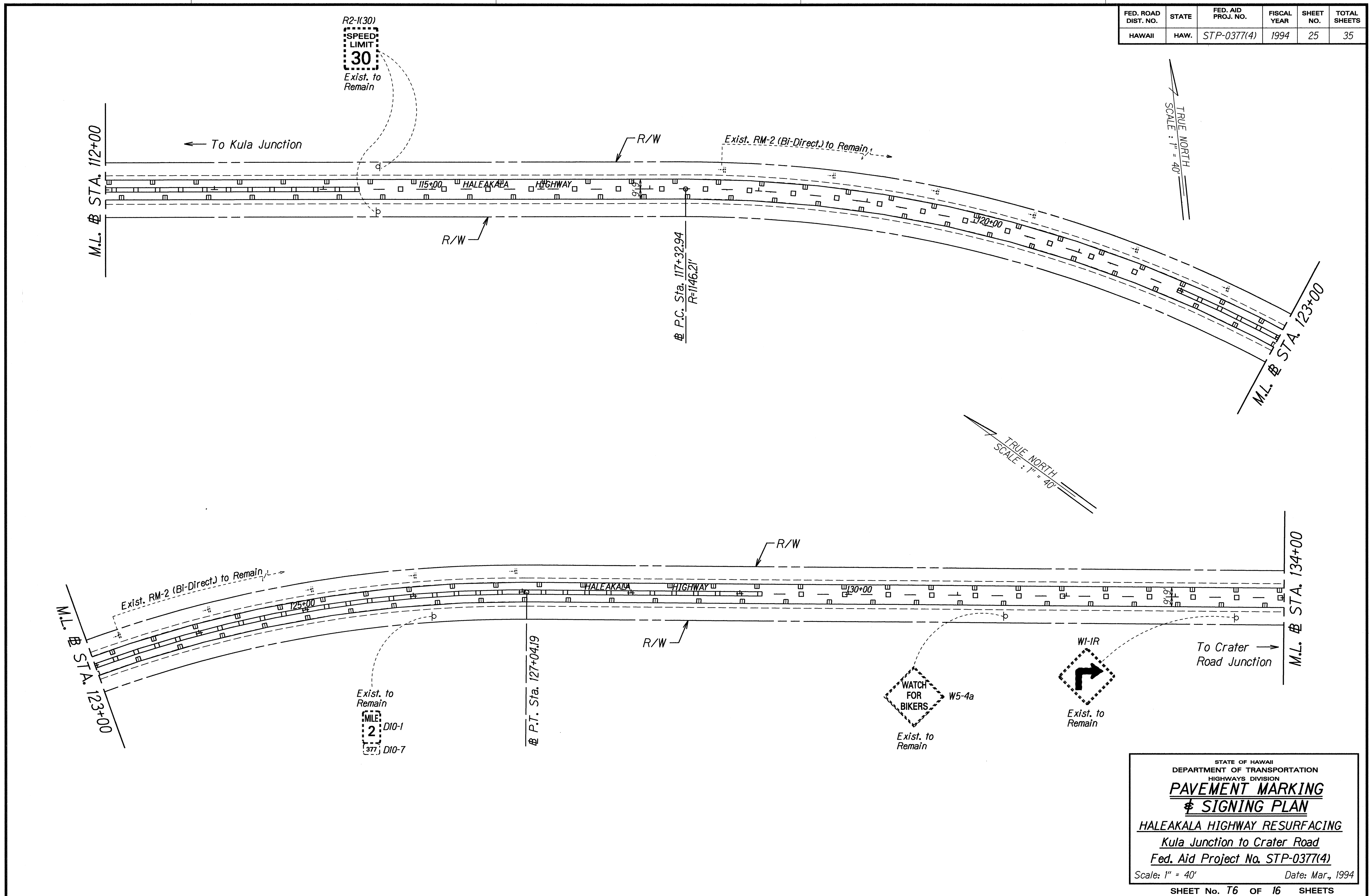
**PAVEMENT MARKING**  
**& SIGNING PLAN**

HALEAKALA HIGHWAY RESURFACING  
Kula Junction to Crater Road  
Fed. Aid Project No. STP-0377(4)

Scale: 1" = 40'      Date: Mar., 1994

SHEET No. 15 OF 16 SHEETS

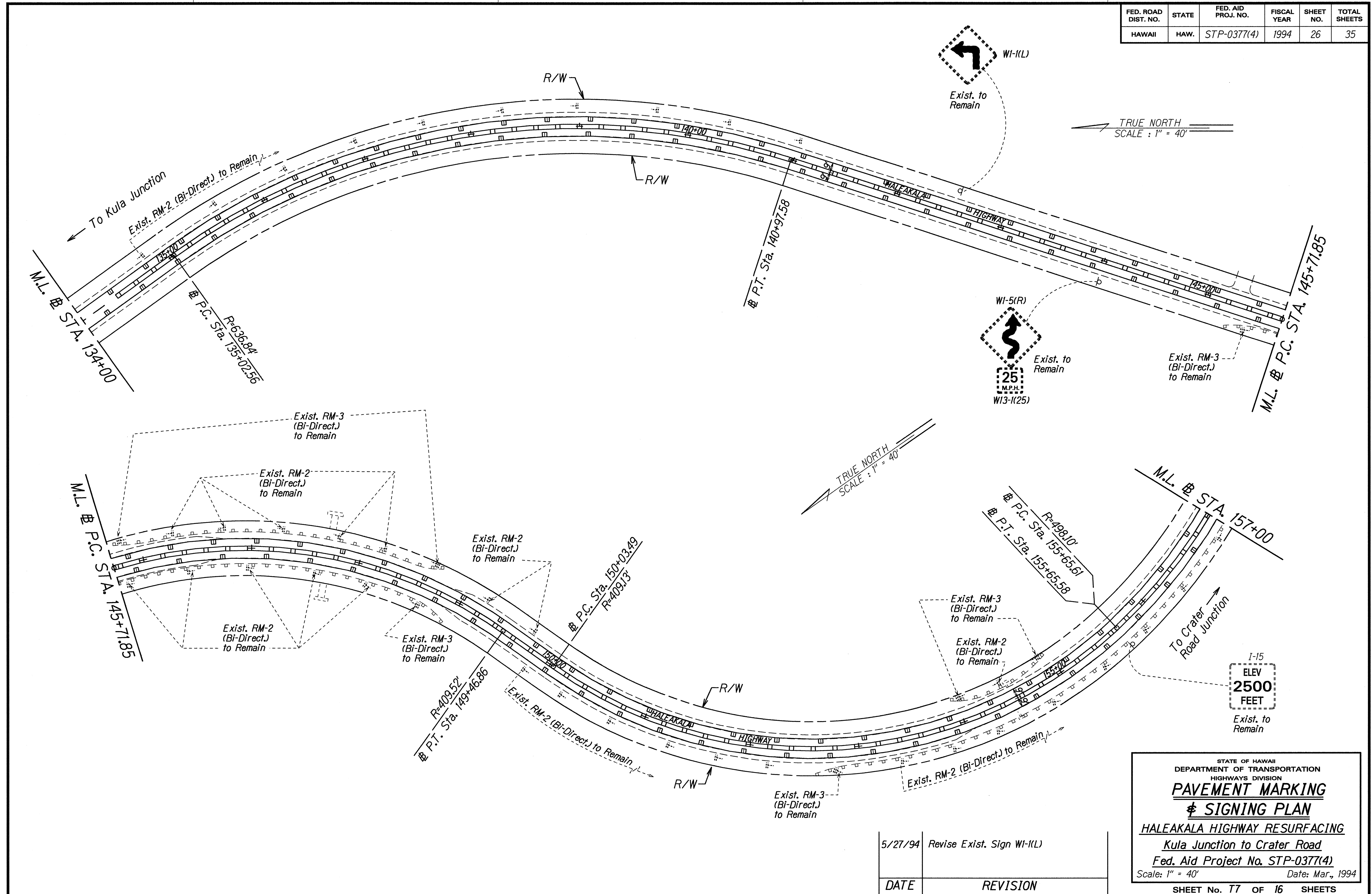
| FED. ROAD DIST. NO. | STATE | FED. AID PROJ. NO. | FISCAL YEAR | SHEET NO. | TOTAL SHEETS |
|---------------------|-------|--------------------|-------------|-----------|--------------|
| HAWAII              | HAW.  | STP-0377(4)        | 1994        | 25        | 35           |



|                   |          |
|-------------------|----------|
| ORIGINAL PLAN     | DATE     |
| SURVEY PLOTTED BY | 4/94     |
| DRAWN BY          | F. Isobe |
| TRACED BY         | C. Brown |
| NOTED BY          | AS       |
| CHECKED BY        | AS       |

STATE OF HAWAII  
DEPARTMENT OF TRANSPORTATION  
HIGHWAYS DIVISION  
**PAVEMENT MARKING**  
**& SIGNING PLAN**  
HALEAKALA HIGHWAY RESURFACING  
Kula Junction to Crater Road  
Fed. Aid Project No. STP-0377(4)  
Scale: 1" = 40' Date: Mar., 1994

|                     |       |                    |             |           |              |
|---------------------|-------|--------------------|-------------|-----------|--------------|
| FED. ROAD DIST. NO. | STATE | FED. AID PROJ. NO. | FISCAL YEAR | SHEET NO. | TOTAL SHEETS |
| HAWAII              | HAW.  | STP-0377(4)        | 1994        | 26        | 35           |



|                   |             |
|-------------------|-------------|
| ORIGINAL PLAN     | DATE        |
| SURVEY PLOTTED BY | 4/94        |
| DRAWN BY          | E. Isobe    |
| NOTED BY          | to be done  |
| DESIGNED BY       | Casey Abo   |
| CHECKED BY        | S. H. H. H. |

5/27/94 Revise Exist. Sign WI-1(L)

DATE REVISION

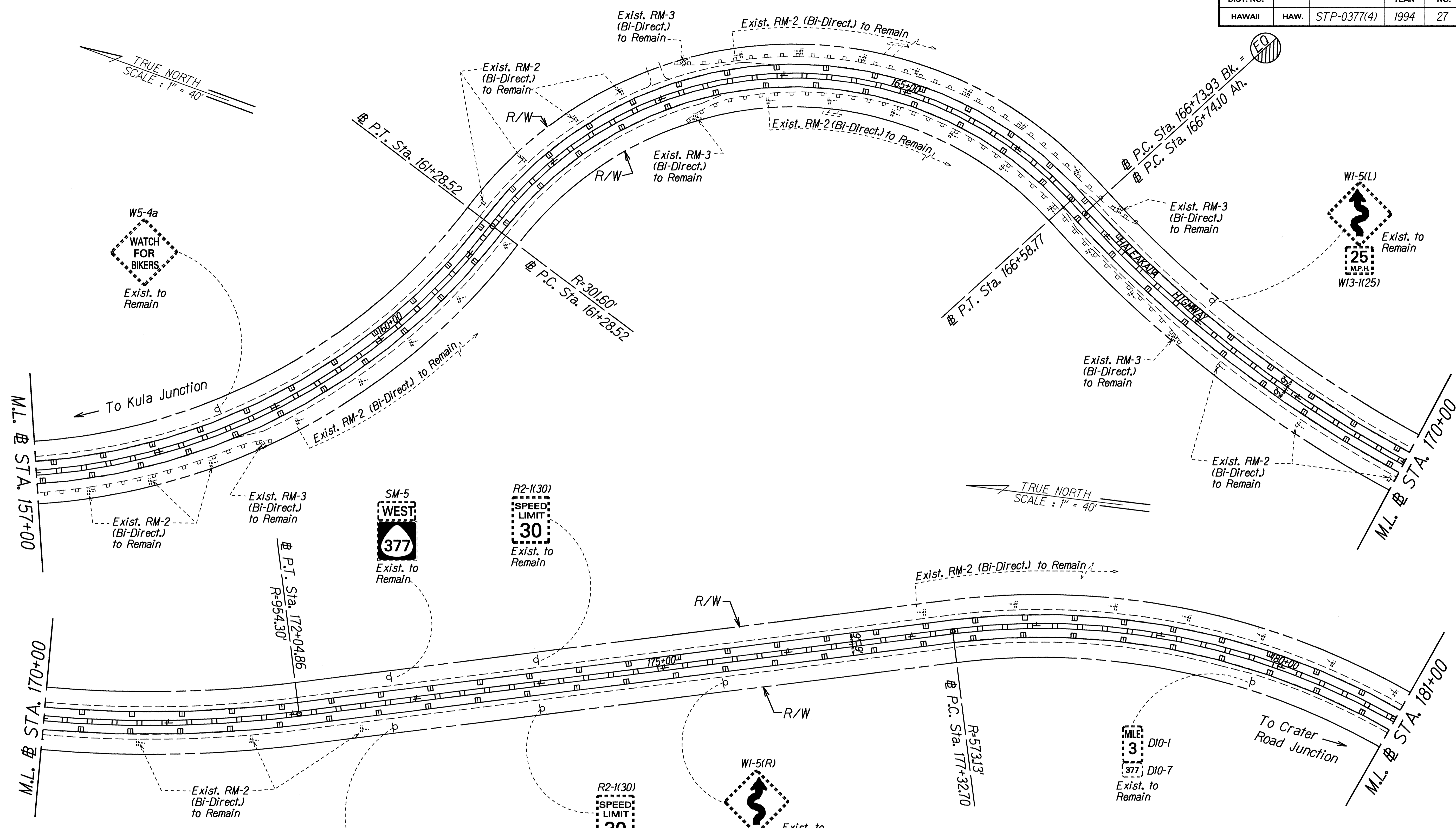
STATE OF HAWAII  
DEPARTMENT OF TRANSPORTATION  
HIGHWAYS DIVISION

**PAVEMENT MARKING**  
**SIGNING PLAN**

HALEAKALA HIGHWAY RESURFACING  
Kula Junction to Crater Road  
Fed. Aid Project No. STP-0377(4)  
Scale: 1" = 40' Date: Mar., 1994

SHEET No. 26 OF 16 SHEETS

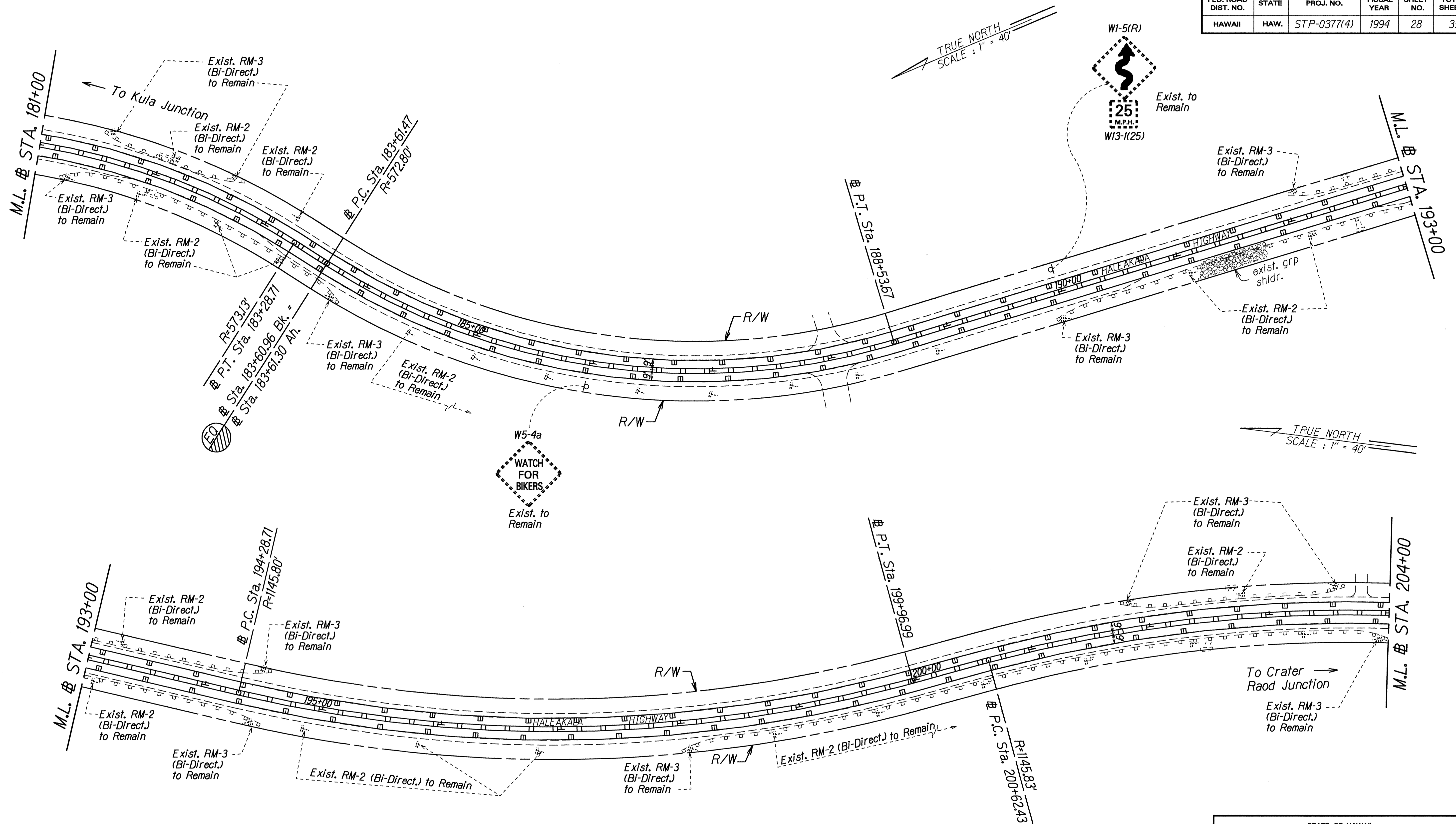
| FED. ROAD DIST. NO. | STATE | FED. AID PROJ. NO. | FISCAL YEAR | SHEET NO. | TOTAL SHEETS |
|---------------------|-------|--------------------|-------------|-----------|--------------|
| HAWAII              | HAW.  | STP-0377(4)        | 1994        | 27        | 35           |



SURVEY PLOTTED BY: \_\_\_\_\_ DATE: 4/94  
 DRAWN BY: E. Long  
 TRACED BY: \_\_\_\_\_  
 DESIGNED BY: \_\_\_\_\_  
 CHECKED BY: \_\_\_\_\_  
 ORIGINAL PLAN: \_\_\_\_\_  
 NOTE BOOK: \_\_\_\_\_  
 TO BE MAINTAINED BY: \_\_\_\_\_  
 CHECKED BY: \_\_\_\_\_

STATE OF HAWAII  
 DEPARTMENT OF TRANSPORTATION  
 HIGHWAYS DIVISION  
**PAVEMENT MARKING**  
**✦ SIGNING PLAN**  
 HALEAKALA HIGHWAY RESURFACING  
 Kula Junction to Crater Road  
 Fed. Aid Project No. STP-0377(4)  
 Scale: 1" = 40' Date: Mar., 1994

| FED. ROAD DIST. NO. | STATE | FED. AID PROJ. NO. | FISCAL YEAR | SHEET NO. | TOTAL SHEETS |
|---------------------|-------|--------------------|-------------|-----------|--------------|
| HAWAII              | HAW.  | STP-0377(4)        | 1994        | 28        | 35           |



|                   |            |
|-------------------|------------|
| DATE              | 4/94       |
| SURVEY PLOTTED BY |            |
| DRAWN BY          | F. Isobe   |
| TRACED BY         | Cherry Abe |
| NOTES             | to be done |
| QUANTITIES BY     |            |
| CHECKED BY        |            |
| ORIGINAL PLAN     |            |
| NOTE BOOK         |            |
| DATE              |            |
| CHECKED BY        |            |

STATE OF HAWAII  
DEPARTMENT OF TRANSPORTATION  
HIGHWAYS DIVISION

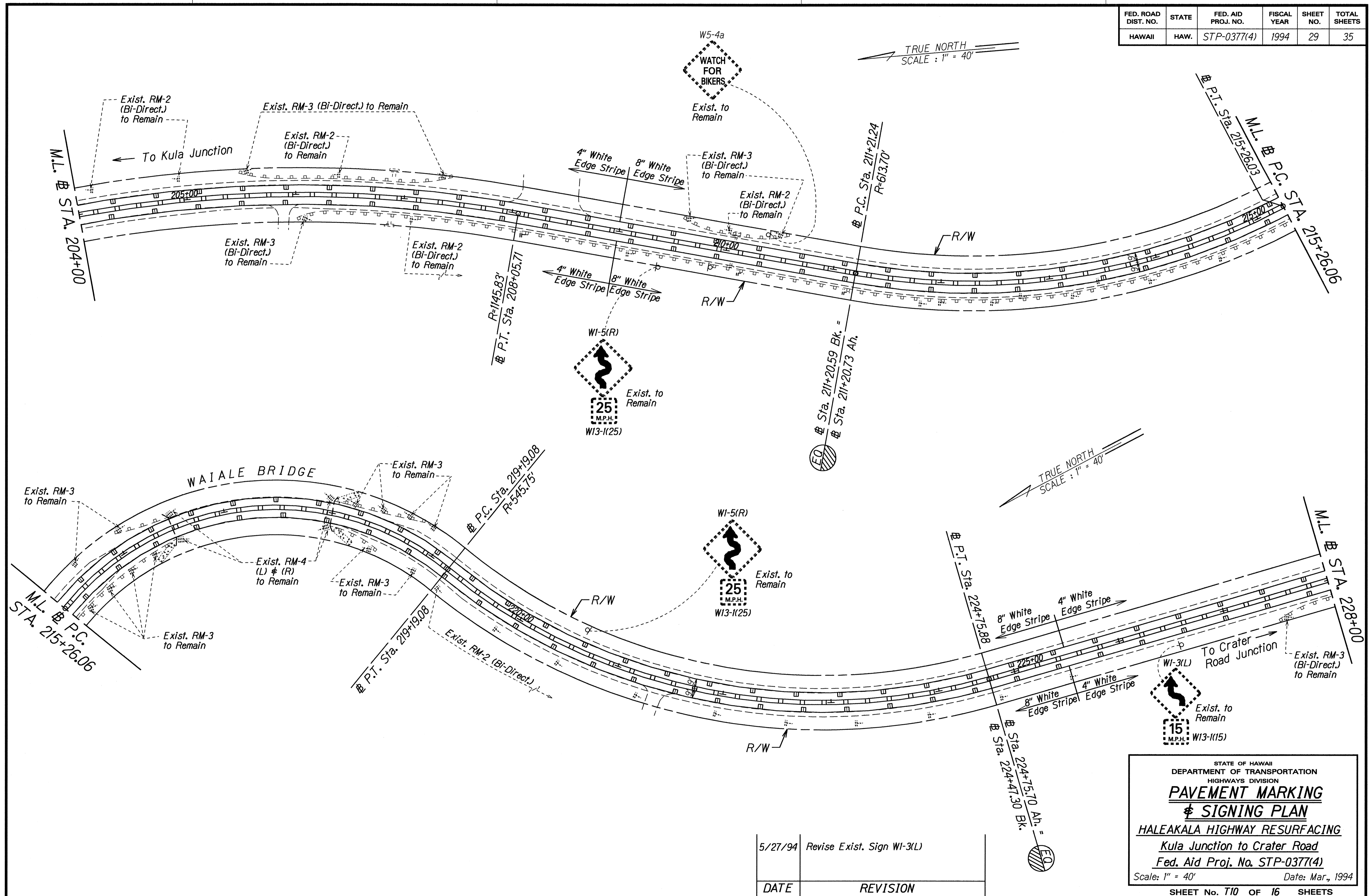
**PAVEMENT MARKING**  
**& SIGNING PLAN**

**HALEAKALA HIGHWAY RESURFACING**  
**Kula Junction to Crater Road**  
**Fed. Aid Project No. STP-0377(4)**

Scale: 1" = 40'      Date: Mar., 1994

SHEET No. 19 OF 16 SHEETS

|                     |       |                    |             |           |              |
|---------------------|-------|--------------------|-------------|-----------|--------------|
| FED. ROAD DIST. NO. | STATE | FED. AID PROJ. NO. | FISCAL YEAR | SHEET NO. | TOTAL SHEETS |
| HAWAII              | HAW.  | STP-0377(4)        | 1994        | 29        | 35           |



|                   |             |
|-------------------|-------------|
| DATE              | 14.15.94    |
| SURVEY PLOTTED BY |             |
| DRAWN BY          | F. Isaacs   |
| CHECKED BY        |             |
| ORIGINAL PLAN     |             |
| NOTE BOOK         |             |
| DESIGNED BY       | Carroll Abo |
| CONSULTED BY      |             |
| CHECKED BY        |             |

|         |                            |
|---------|----------------------------|
| 5/27/94 | Revise Exist. Sign WI-3(L) |
| DATE    | REVISION                   |

STATE OF HAWAII  
DEPARTMENT OF TRANSPORTATION  
HIGHWAYS DIVISION

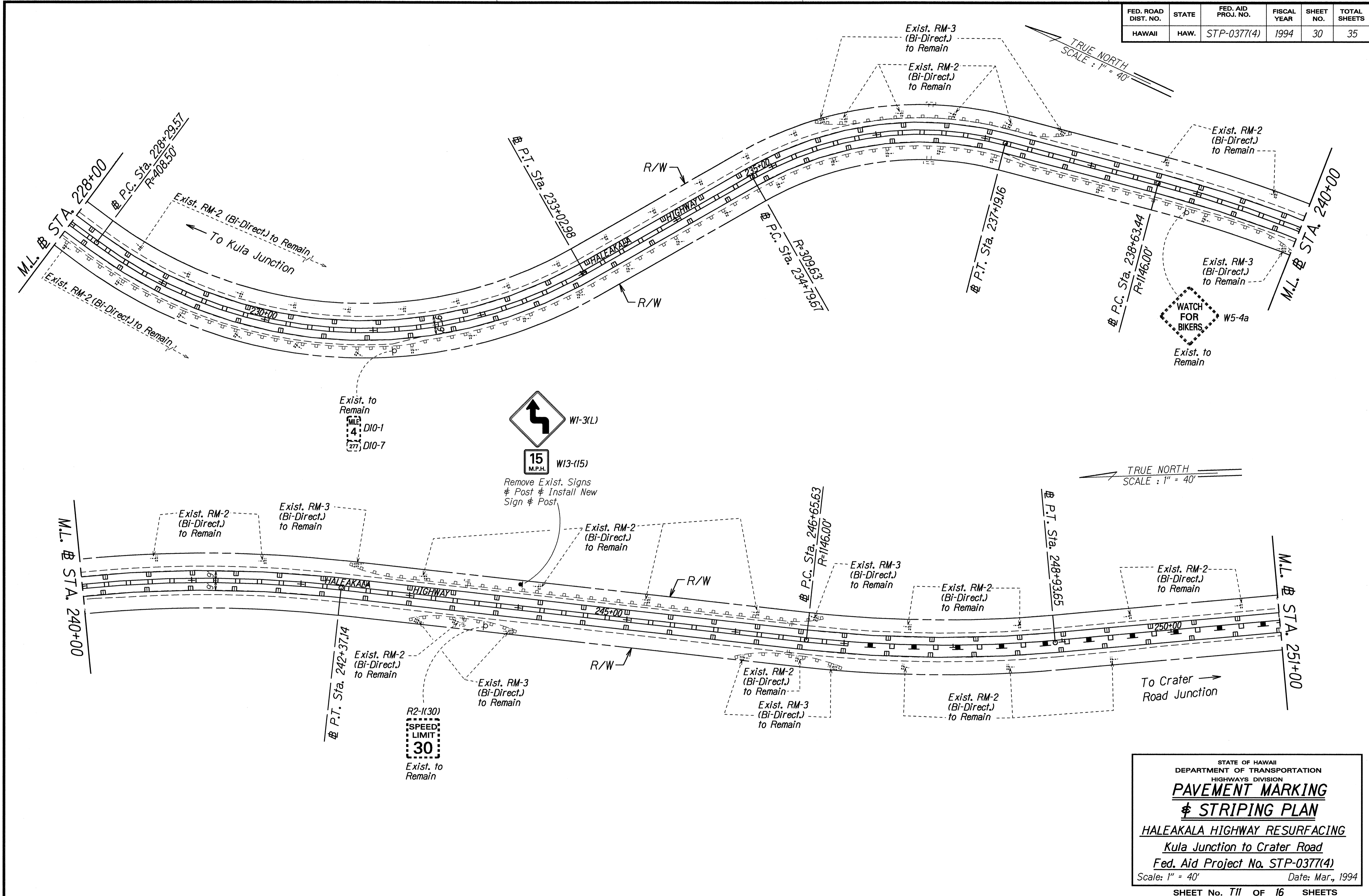
**PAVEMENT MARKING  
& SIGNING PLAN**

**HALEAKALA HIGHWAY RESURFACING**  
Kula Junction to Crater Road  
Fed. Aid Proj. No. STP-0377(4)

Scale: 1" = 40' Date: Mar., 1994

SHEET No. T10 OF 16 SHEETS

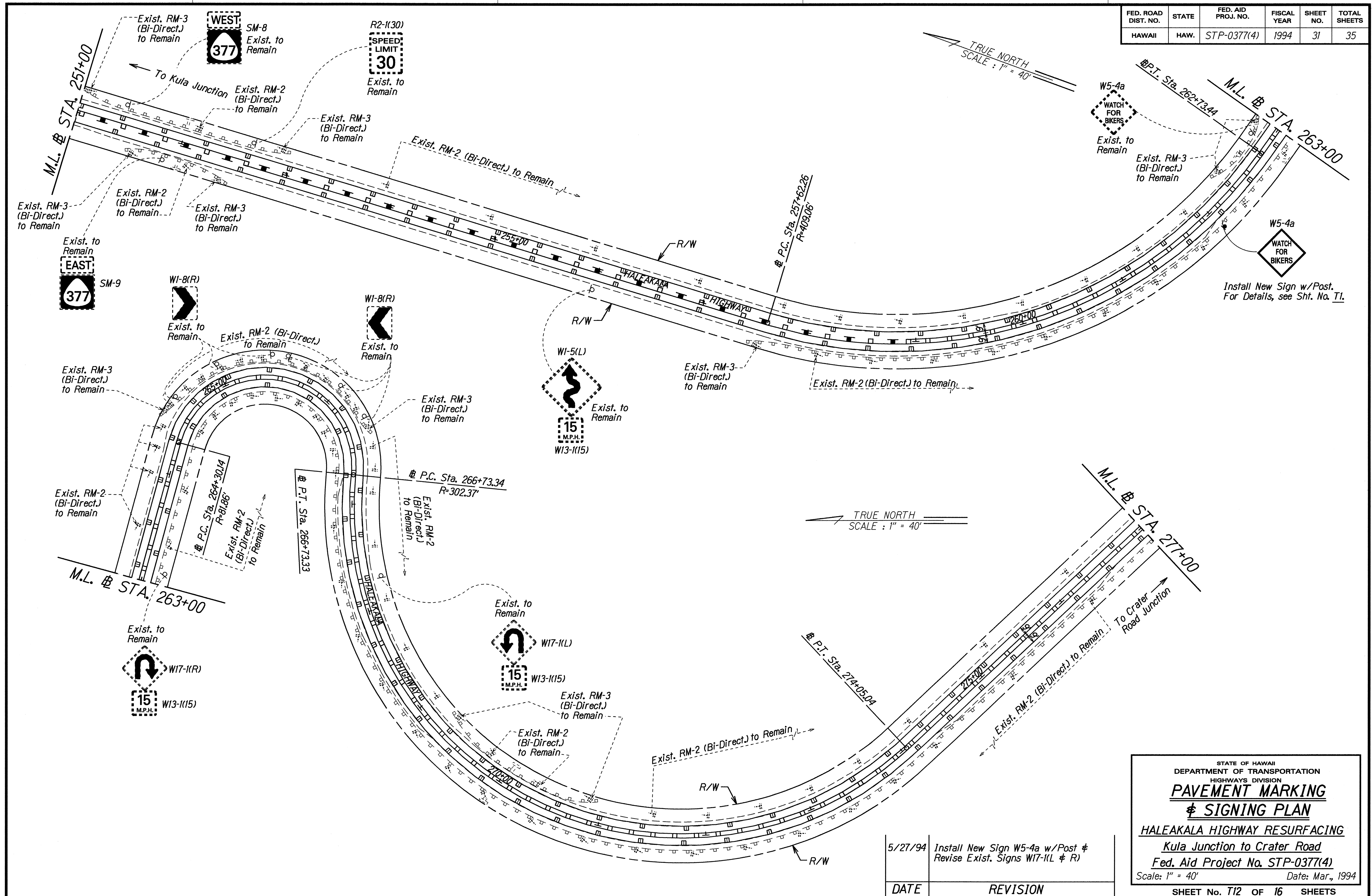
| FED. ROAD DIST. NO. | STATE | FED. AID PROJ. NO. | FISCAL YEAR | SHEET NO. | TOTAL SHEETS |
|---------------------|-------|--------------------|-------------|-----------|--------------|
| HAWAII              | HAW.  | STP-0377(4)        | 1994        | 30        | 35           |



|                   |      |
|-------------------|------|
| SURVEY PLOTTED BY | DATE |
| DRAWN BY          |      |
| TRACED BY         |      |
| QUANTITIES BY     |      |
| CHECKED BY        |      |
| ORIGINAL PLAN     |      |
| NOTE BOOK         |      |
| FILE NAME         |      |
| DATE PLOTTED      |      |

STATE OF HAWAII  
 DEPARTMENT OF TRANSPORTATION  
 HIGHWAYS DIVISION  
**PAVEMENT MARKING**  
**STRIPING PLAN**  
 HALEAKALA HIGHWAY RESURFACING  
 Kula Junction to Crater Road  
 Fed. Aid Project No. STP-0377(4)  
 Scale: 1" = 40' Date: Mar., 1994  
 SHEET No. 111 OF 16 SHEETS

| FED. ROAD DIST. NO. | STATE | FED. AID PROJ. NO. | FISCAL YEAR | SHEET NO. | TOTAL SHEETS |
|---------------------|-------|--------------------|-------------|-----------|--------------|
| HAWAII              | HAW.  | STP-0377(4)        | 1994        | 31        | 35           |



|                   |      |
|-------------------|------|
| ORIGINAL PLAN     | DATE |
| SURVEY PLOTTED BY | 3/24 |
| DRAWN BY          |      |
| TRACED BY         |      |
| NOTED BY          |      |
| DESIGNED BY       |      |
| QUANTIFIED BY     |      |
| CHECKED BY        |      |

| DATE    | REVISION                                                            |
|---------|---------------------------------------------------------------------|
| 5/27/94 | Install New Sign W5-4a w/Post #<br>Revise Exist. Signs W17-1(L) & R |

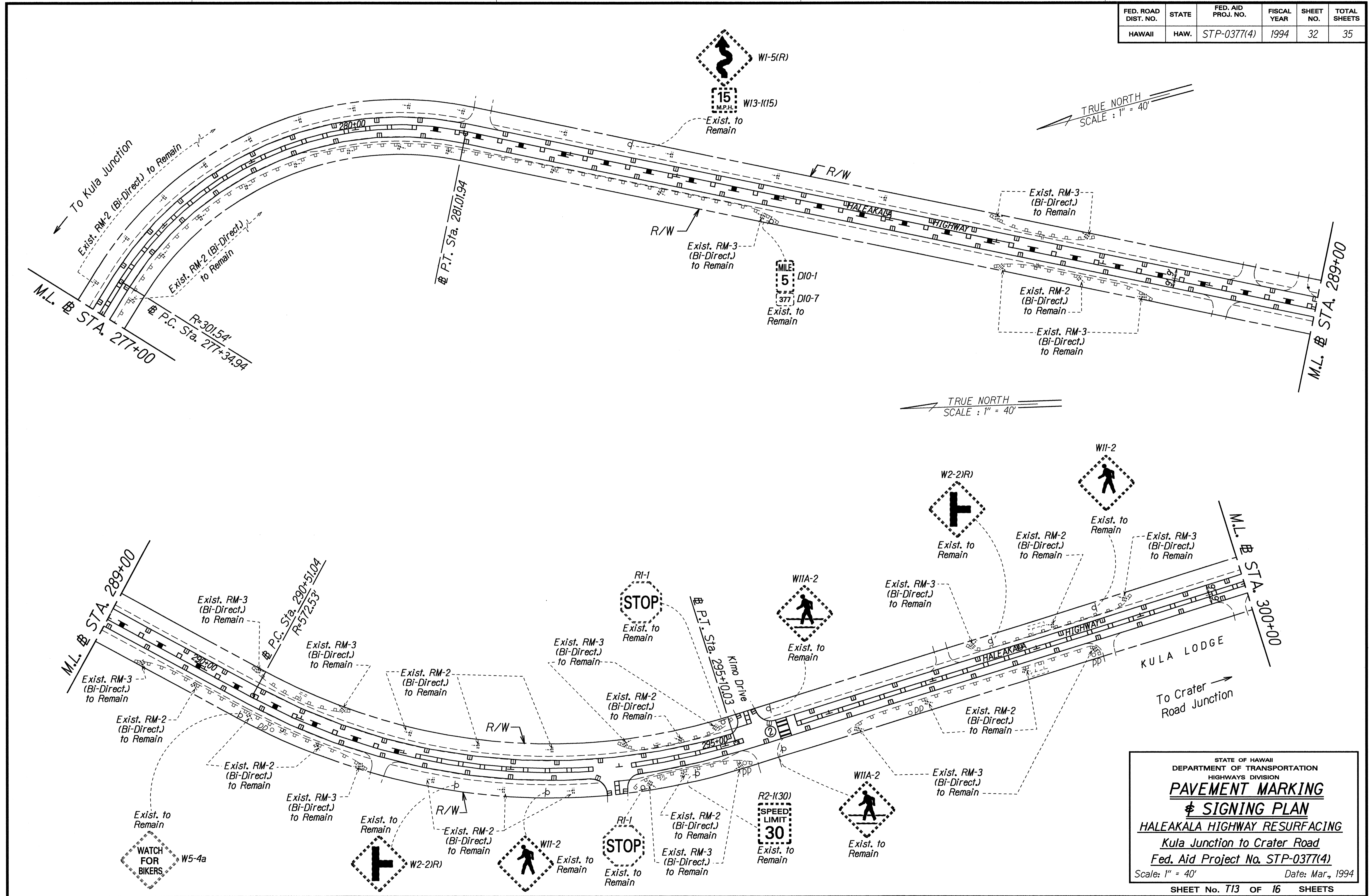
STATE OF HAWAII  
DEPARTMENT OF TRANSPORTATION  
HIGHWAYS DIVISION

### PAVEMENT MARKING & SIGNING PLAN

**HALEAKALA HIGHWAY RESURFACING**  
Kula Junction to Crater Road  
Fed. Aid Project No. STP-0377(4)  
Scale: 1" = 40' Date: Mar., 1994

SHEET No. T12 OF 16 SHEETS

| FED. ROAD DIST. NO. | STATE | FED. AID PROJ. NO. | FISCAL YEAR | SHEET NO. | TOTAL SHEETS |
|---------------------|-------|--------------------|-------------|-----------|--------------|
| HAWAII              | HAW.  | STP-0377(4)        | 1994        | 32        | 35           |



|                   |             |
|-------------------|-------------|
| ORIGINAL PLAN     | DATE        |
| SURVEY PLOTTED BY | 4/24        |
| DRAWN BY          | E. Isalle   |
| TRACED BY         | Cheryl Aho  |
| NOTES             | to be added |
| QUANTITIES        | to be added |
| CHECKED BY        | to be added |

STATE OF HAWAII  
DEPARTMENT OF TRANSPORTATION  
HIGHWAYS DIVISION

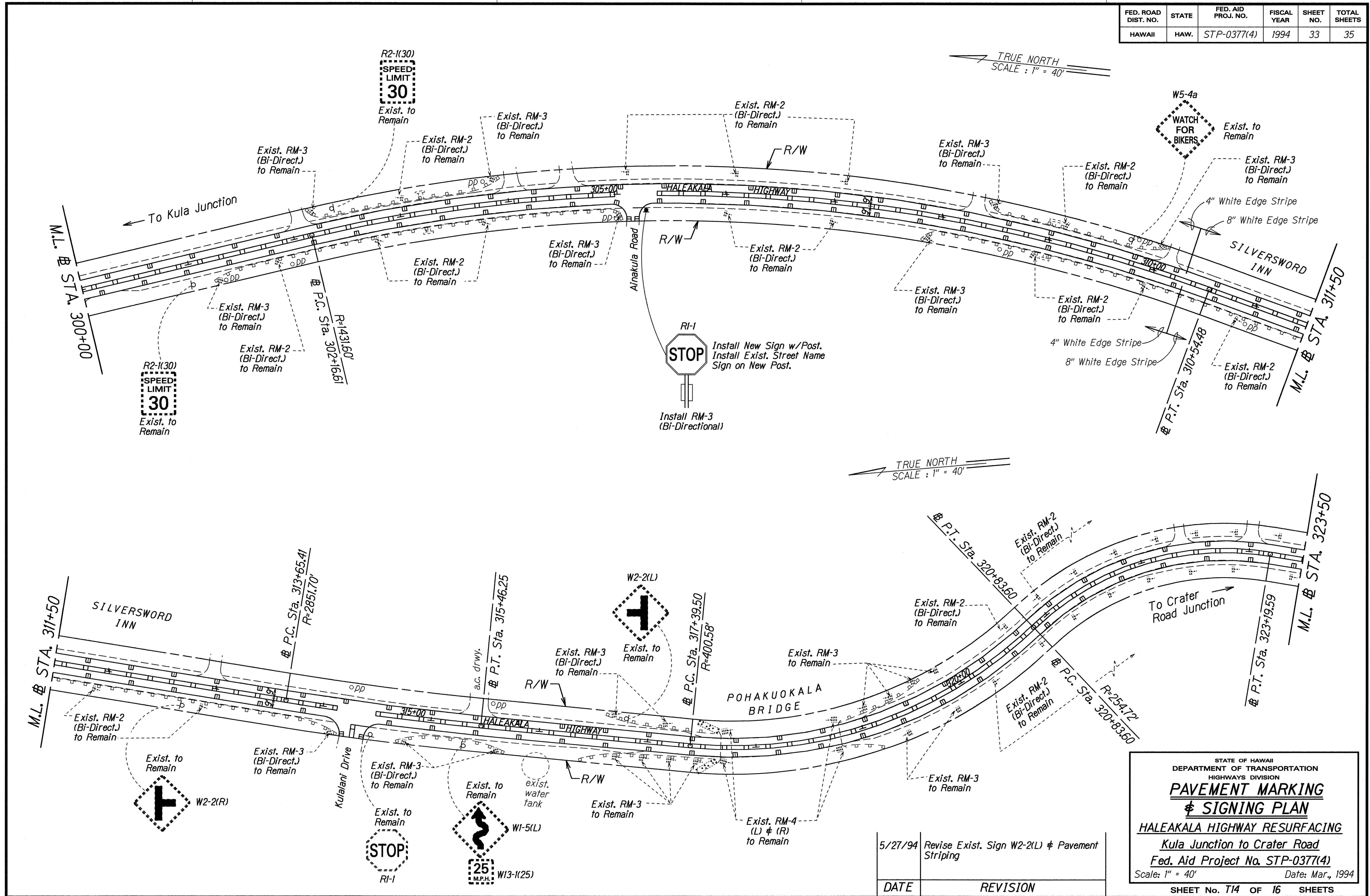
### PAVEMENT MARKING & SIGNING PLAN

**HALEAKALA HIGHWAY RESURFACING**  
Kula Junction to Crater Road  
Fed. Aid Project No. STP-0377(4)

Scale: 1" = 40'      Date: Mar., 1994

SHEET No. 113 OF 16 SHEETS

| FED. ROAD DIST. NO. | STATE | FED. AID PROJ. NO. | FISCAL YEAR | SHEET NO. | TOTAL SHEETS |
|---------------------|-------|--------------------|-------------|-----------|--------------|
| HAWAII              | HAW.  | STP-0377(4)        | 1994        | 33        | 35           |



|               |                   |      |
|---------------|-------------------|------|
| ORIGINAL PLAN | SURVEY PLOTTED BY | DATE |
| TRACED BY     |                   |      |
| NOTES         |                   |      |
| DESIGNED BY   |                   |      |
| CHECKED BY    |                   |      |

| DATE    | REVISION                                       |
|---------|------------------------------------------------|
| 5/27/94 | Revise Exist. Sign W2-2(L) & Pavement Striping |

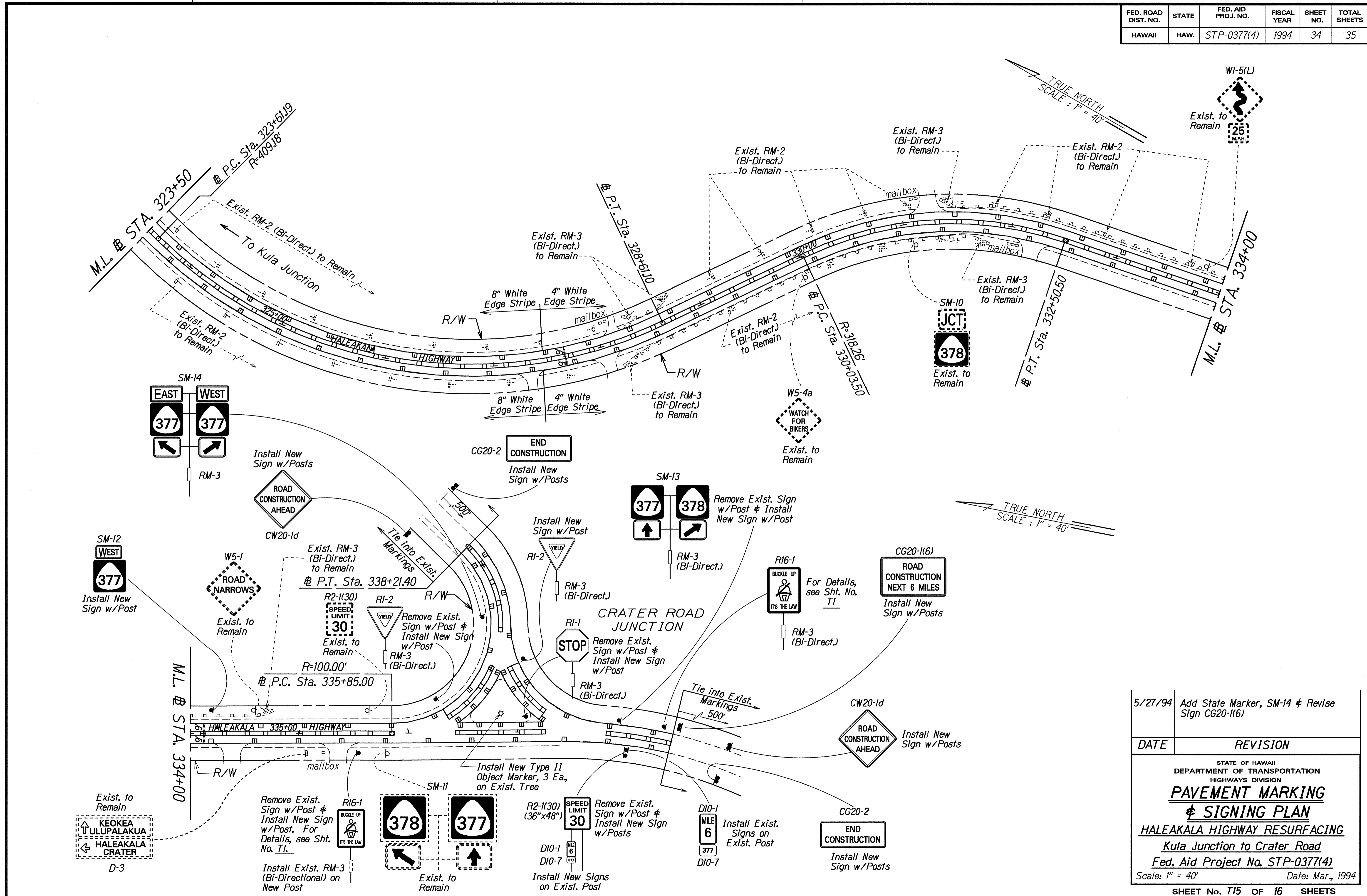
STATE OF HAWAII  
DEPARTMENT OF TRANSPORTATION  
HIGHWAYS DIVISION

**PAVEMENT MARKING  
& SIGNING PLAN**

**HALEAKALA HIGHWAY RESURFACING**  
Kula Junction to Crater Road  
Fed. Aid Project No. STP-0377(4)  
Scale: 1" = 40' Date: Mar., 1994

SHEET No. T14 OF 16 SHEETS

| FED. ROAD DIST. NO. | STATE | FED. AID PROJ. NO. | FISCAL YEAR | SHEET NO. | TOTAL SHEETS |
|---------------------|-------|--------------------|-------------|-----------|--------------|
| HAWAII              | HAW.  | STP-0377(4)        | 1994        | 34        | 35           |



|                   |      |      |
|-------------------|------|------|
| ORIGINAL PLAN     | DATE | 3/24 |
| SURVEY PLOTTED BY |      |      |
| DRAWN BY          |      |      |
| NOTES             |      |      |
| CHECKED BY        |      |      |

| 5/27/94                                                                                                                                                                                                                                                                                                           | Add State Marker, SM-14 & Revise Sign CG20-1(6) |
|-------------------------------------------------------------------------------------------------------------------------------------------------------------------------------------------------------------------------------------------------------------------------------------------------------------------|-------------------------------------------------|
| DATE                                                                                                                                                                                                                                                                                                              | REVISION                                        |
| STATE OF HAWAII<br>DEPARTMENT OF TRANSPORTATION<br>HIGHWAYS DIVISION<br><b>PAVEMENT MARKING</b><br><b>&amp; SIGNING PLAN</b><br><b>HALEAKALA HIGHWAY RESURFACING</b><br><b>Kula Junction to Crater Road</b><br>Fed. Aid Project No. STP-0377(4)<br>Scale: 1" = 40' Date: Mar., 1994<br>SHEET No. T15 OF 16 SHEETS |                                                 |