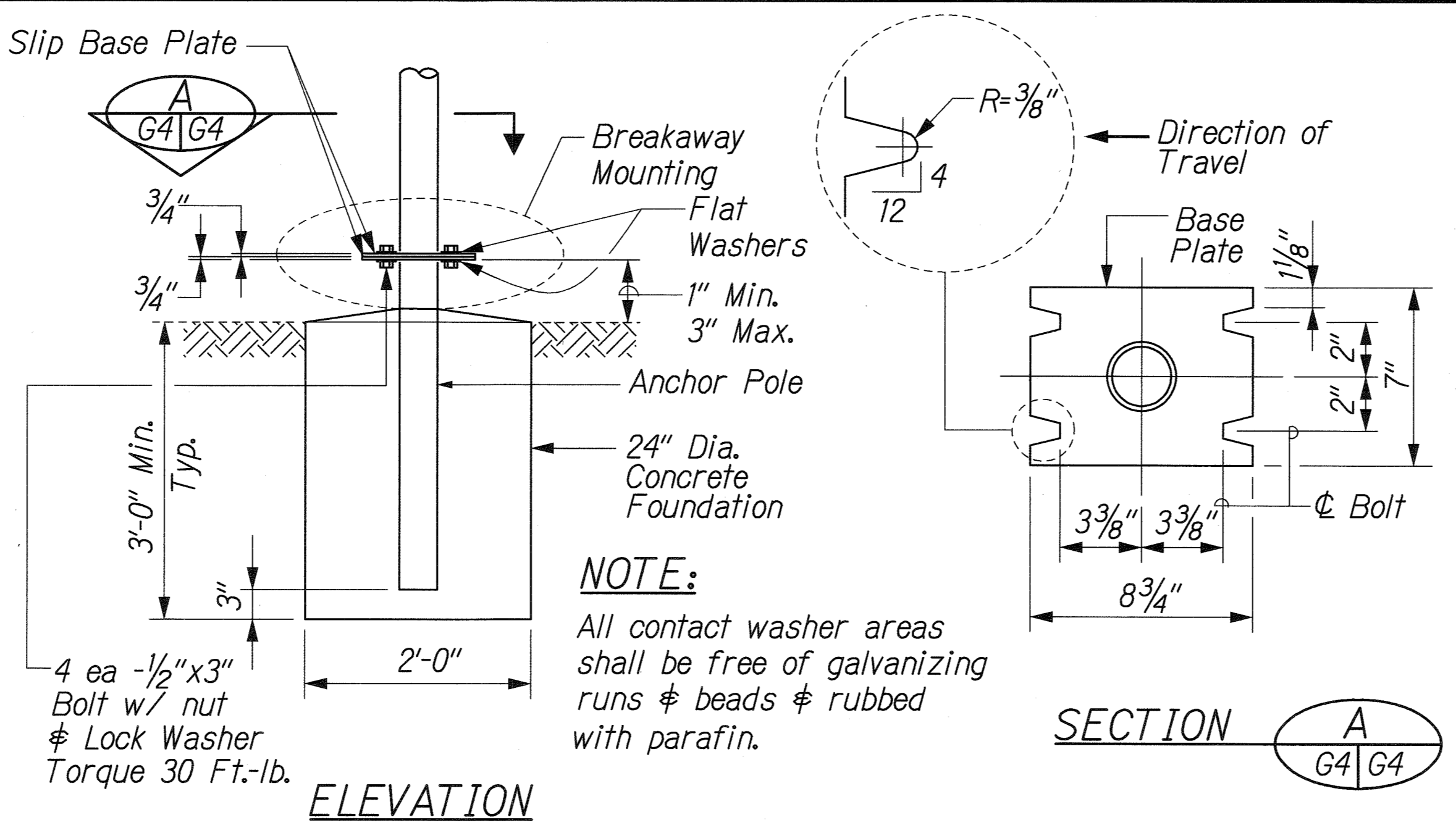
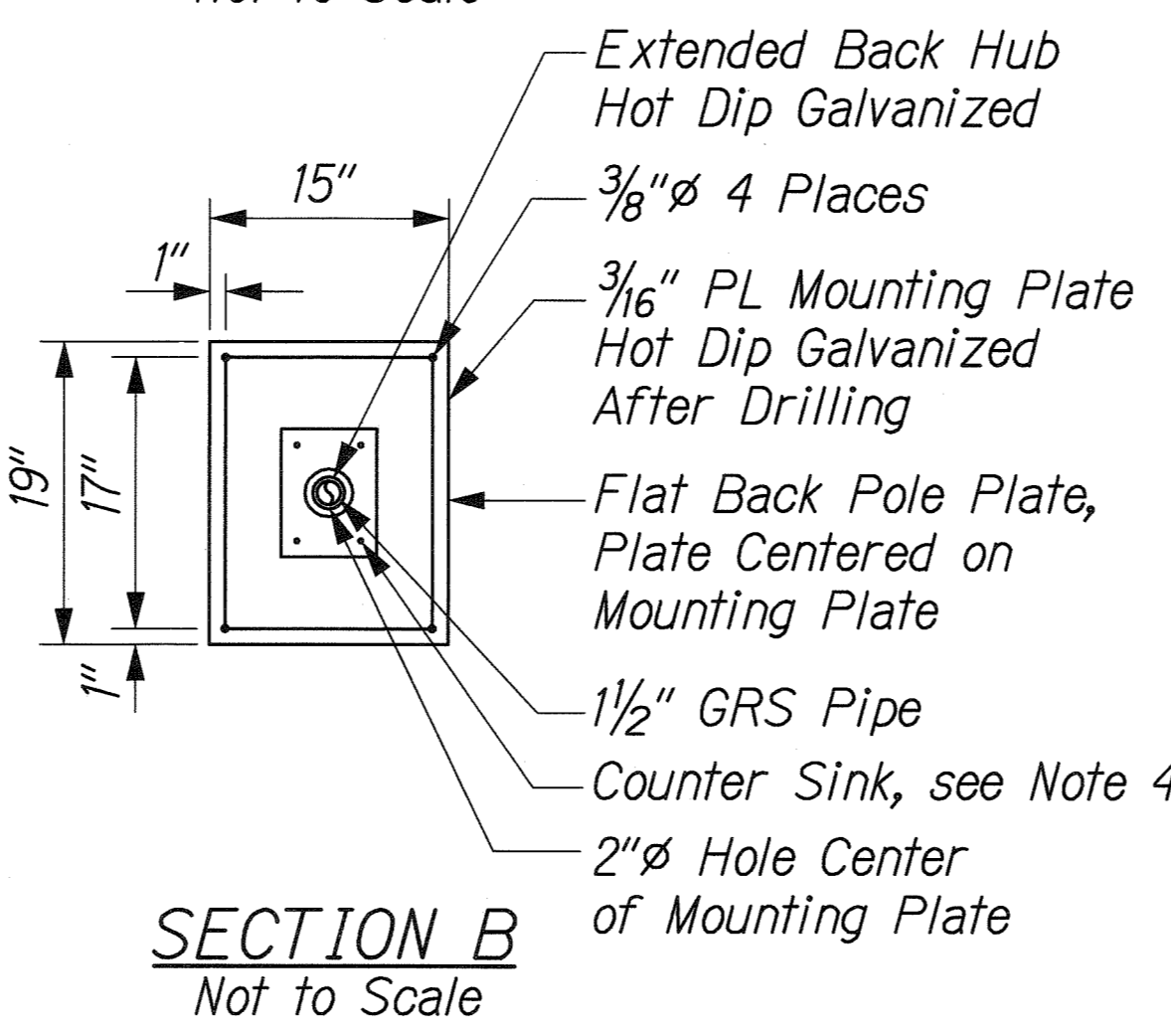
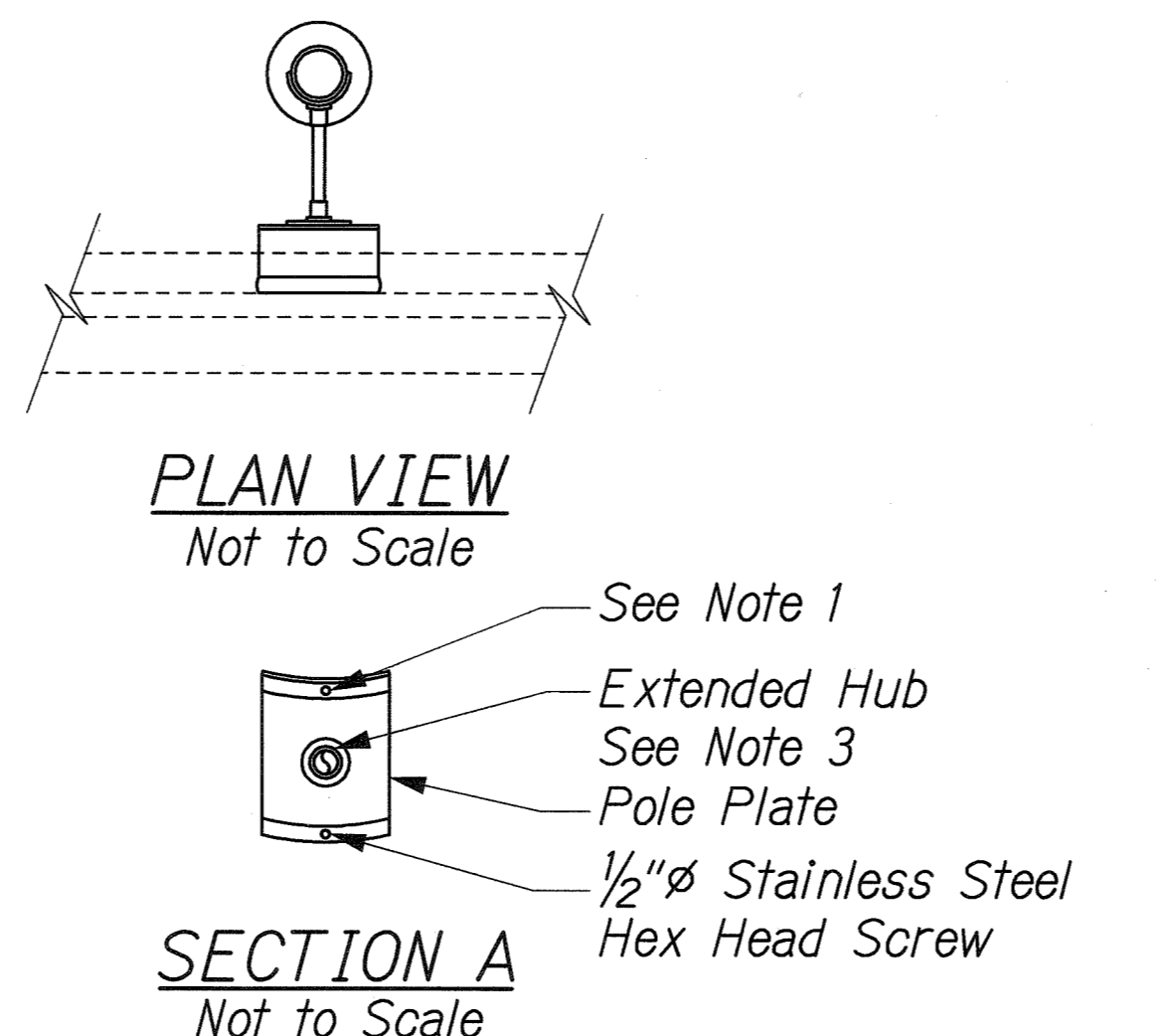
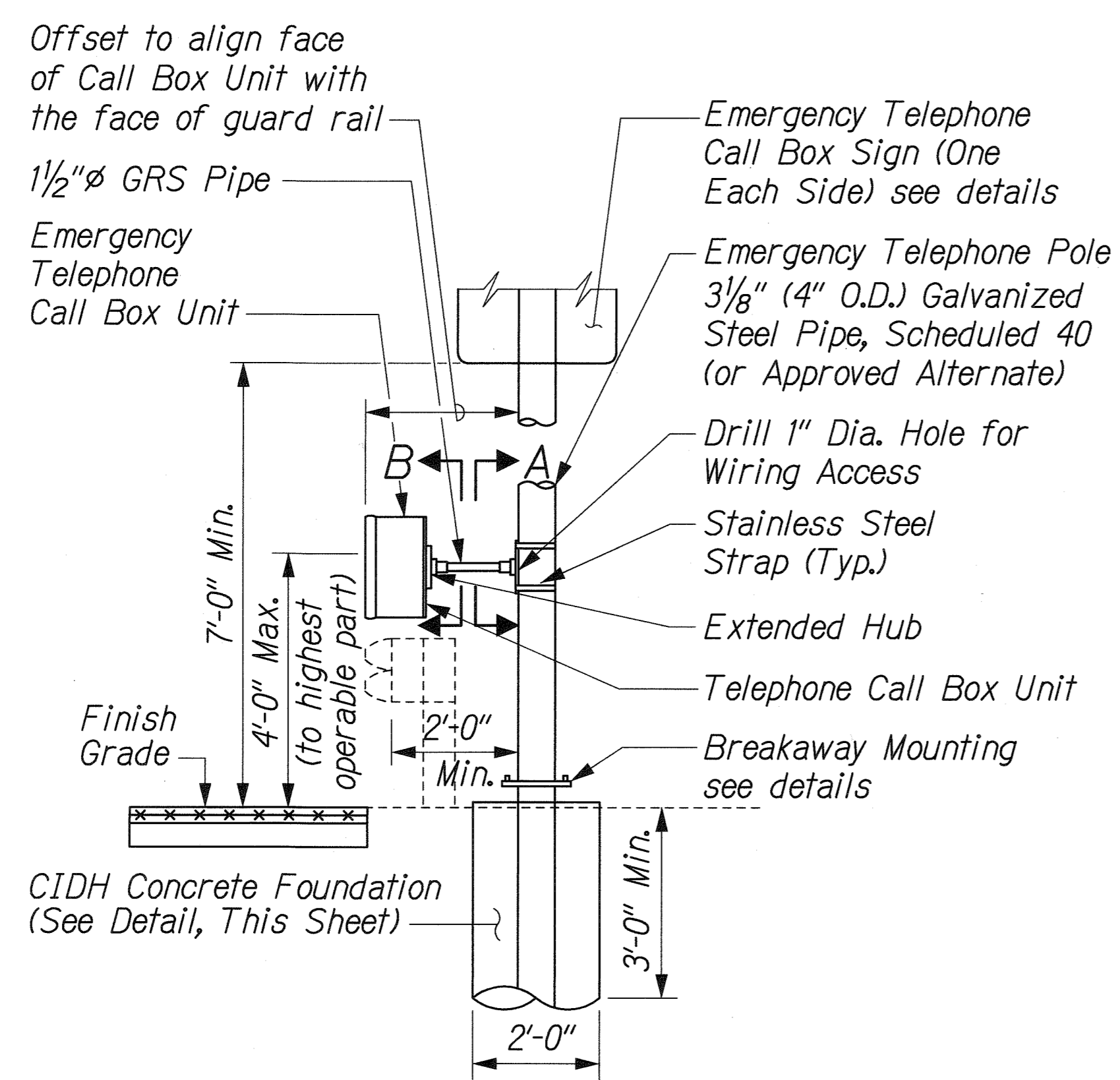
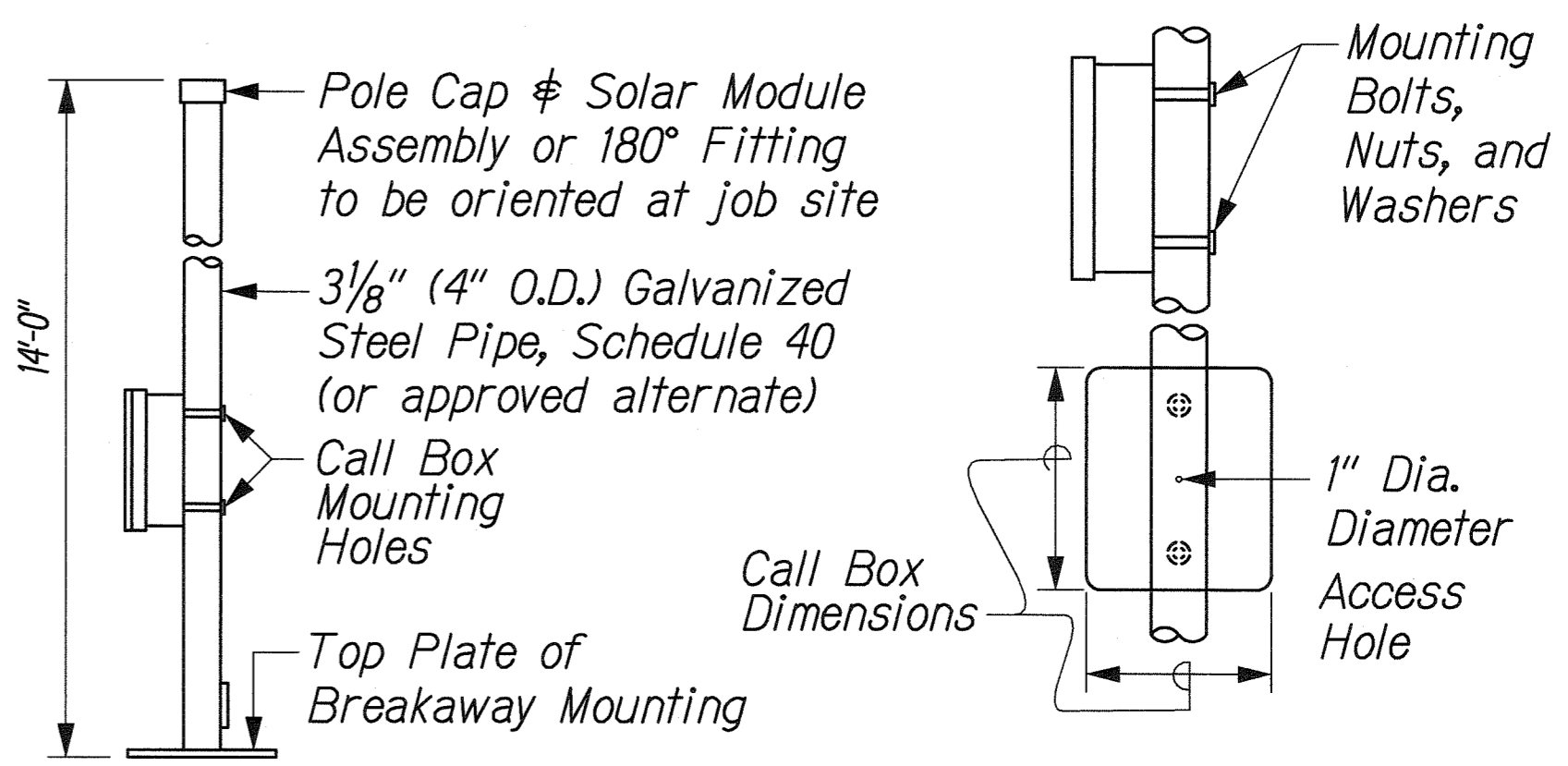


FED. ROAD DIST. NO.	STATE	FED. AID PROJ. NO.	FISCAL YEAR	SHEET NO.	TOTAL SHEETS
HAWAII	HAW.	STP-0360(9)	2006	6	16

- NOTES:**
- Foundation shall be Class B concrete placed against undisturbed material.
 - Backfill shall be completed and adjacent surface improvements prepared prior to erection of the post.
 - 1/2-inch expansion joint shall be placed between the foundation and abutting concrete paving.
 - CIDH - Cast in Drilled Hole.
 - Location of call box unit shall be based on the direction of Traffic, except for installation behind guardrail. See details this sheet or as directed by the Engineer.
 - The foundation for the post shall be drilled, not excavated. Backfilling around the foundation is not permitted.

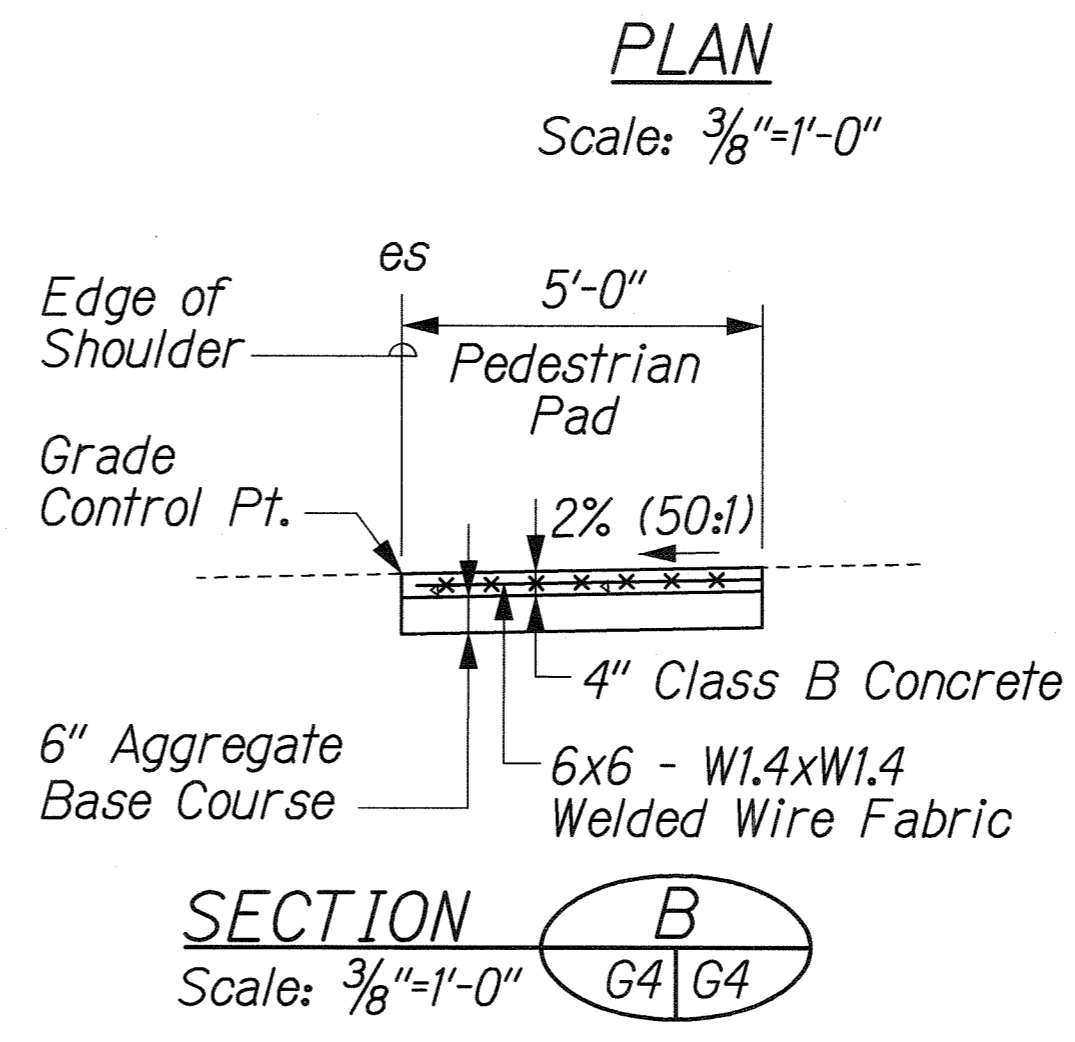
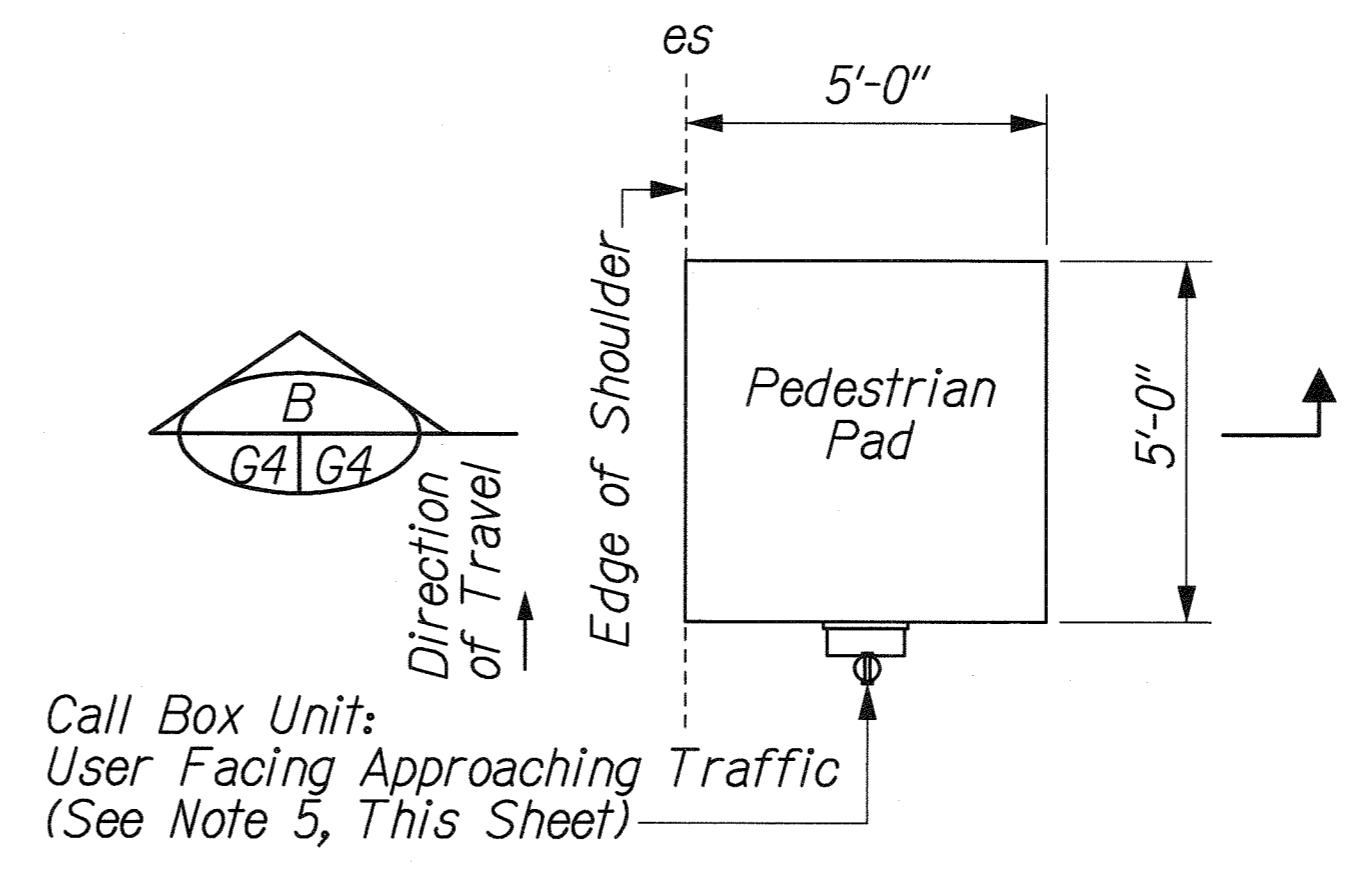


CIDH CONCRETE FOUNDATION WITH BREAKAWAY MOUNTING

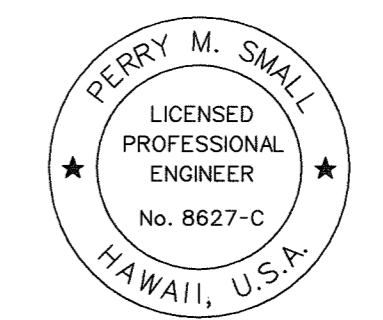


- NOTES:**
- Preferred mounting method shall be stainless steel strap. Use bolts only in locations where straps are not feasible or a combination of straps & bolts.
 - Lock conduits to hub with internal hex set. Screw or tack weld prior to hot dip galvanizing.
 - Adjust pipe length as required to fit location.
 - Install with 1/4-inch stainless steel countersink screws, washers and locknuts.

EMERGENCY TELEPHONE INSTALLATION BEHIND GUARDRAIL (SITE#10)



CONCRETE PEDESTRIAN PAD



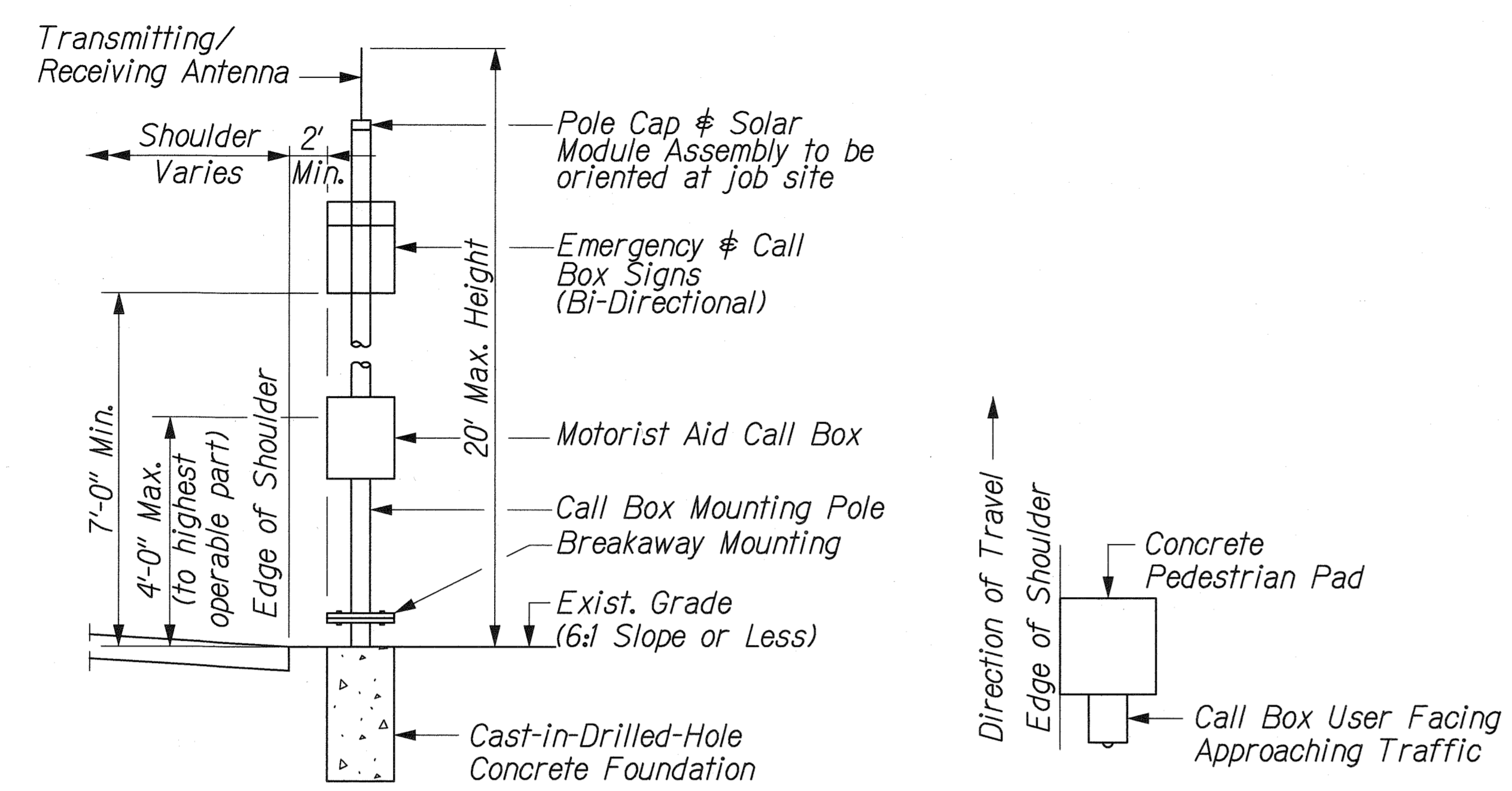
THIS WORK WAS PREPARED BY ME OR UNDER MY SUPERVISION.
Perry M. Small

STATE OF HAWAII
DEPARTMENT OF TRANSPORTATION
HIGHWAYS DIVISION

MISCELLANEOUS DETAILS - 1

HANA HIGHWAY
INSTALLATION OF EMERGENCY TELEPHONES
KAUPAKALUA ROAD TO UA KEA ROAD
FEDERAL-AID PROJECT STP-0360(9)
SCALE: As Shown
DATE: October, 2005

FED. ROAD DIST. NO.	STATE	FED. AID PROJ. NO.	FISCAL YEAR	SHEET NO.	TOTAL SHEETS
HAWAII	HAW.	STP-0360(9)	2006	7	16

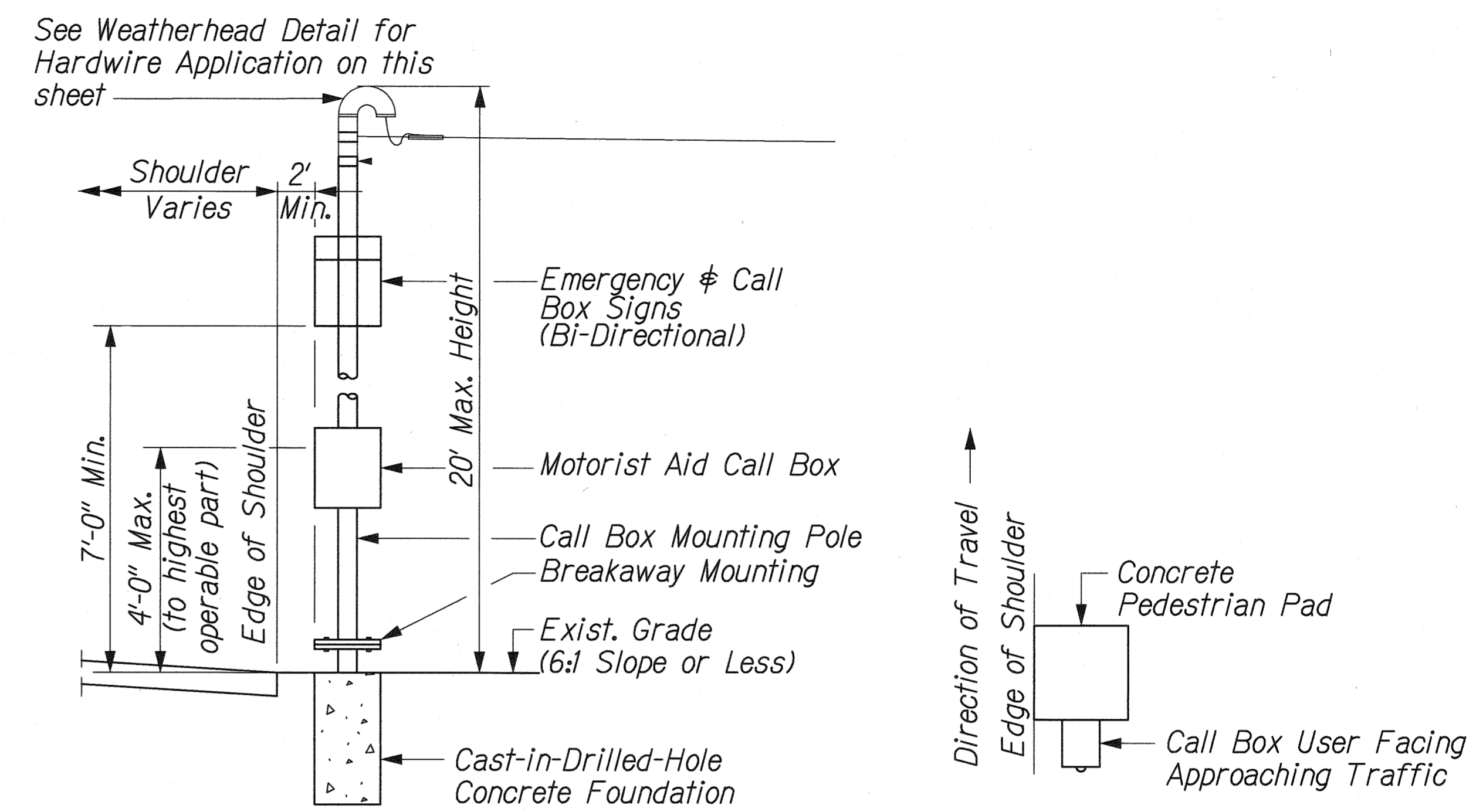


SIDE VIEW

TOP VIEW

TYPICAL CELLULAR INSTALLATION

Not To Scale

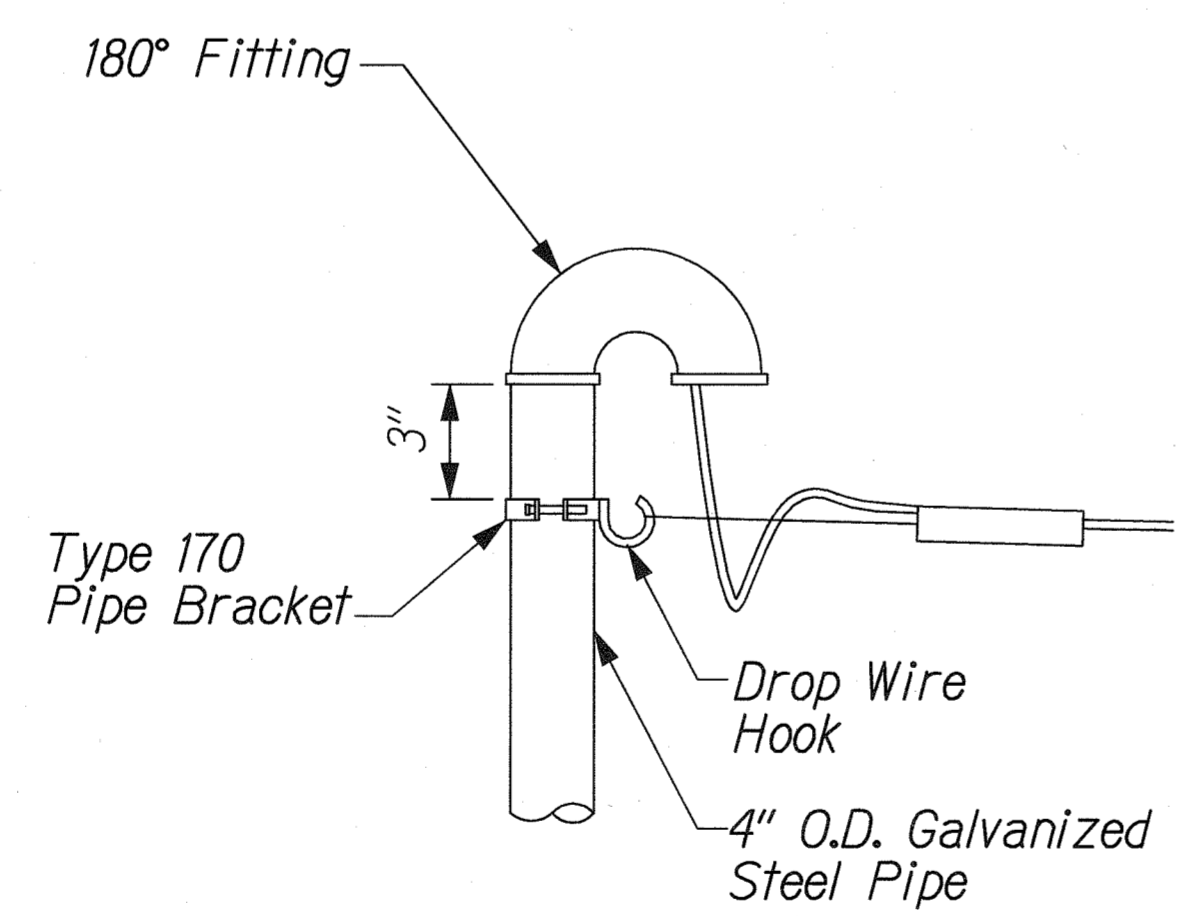


SIDE VIEW

TOP VIEW

TYPICAL HARDWIRE INSTALLATION

Not To Scale



WEATHERHEAD DETAIL FOR HARDWIRE APPLICATION

Not To Scale

DESIGNED BY	DATE
DRAWN BY	
CHECKED BY	
NOTED BY	
QUANTITIES BY	
NO.	

HANA HIGHWAY/MICROSTATION/HANDOUT 0360



THIS WORK WAS PREPARED BY ME OR UNDER MY SUPERVISION.

Perry M. Small

STATE OF HAWAII
DEPARTMENT OF TRANSPORTATION
HIGHWAYS DIVISION

MISCELLANEOUS DETAILS - 2

HANA HIGHWAY
INSTALLATION OF EMERGENCY TELEPHONES
KAUPAKALUA ROAD TO UA KEA ROAD
FEDERAL-AID PROJECT STP-0360(9)

SCALE: NONE DATE: October, 2005

SHEET No. 6-5 OF 6 SHEETS