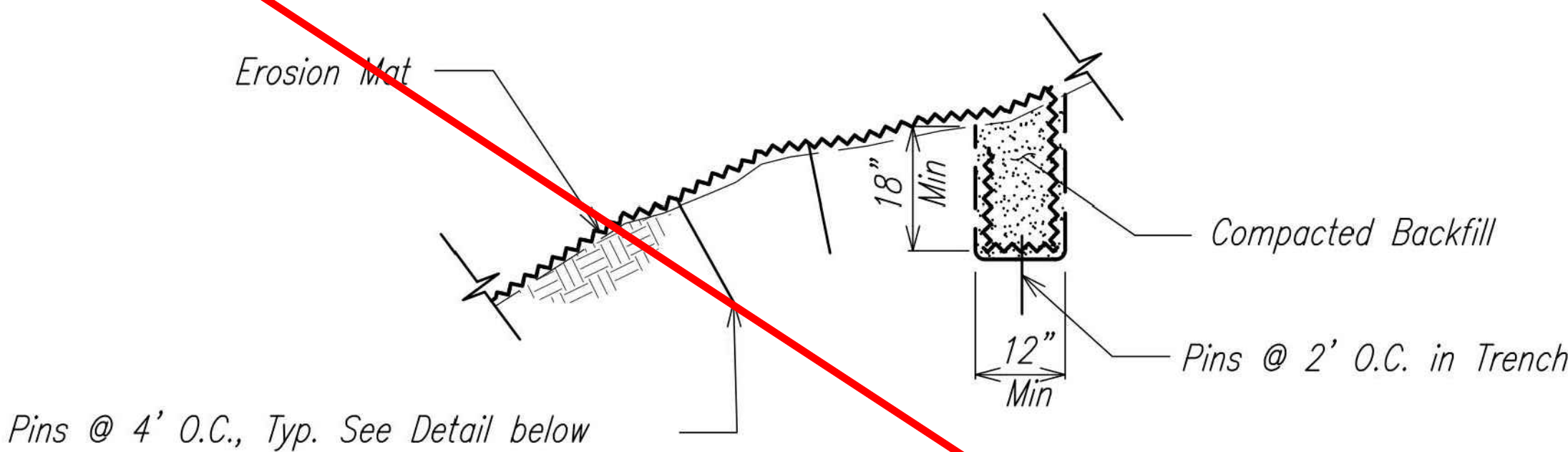
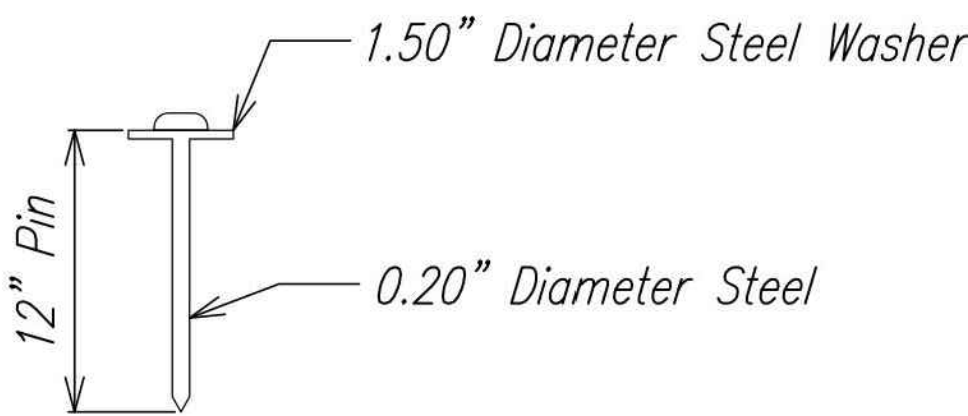


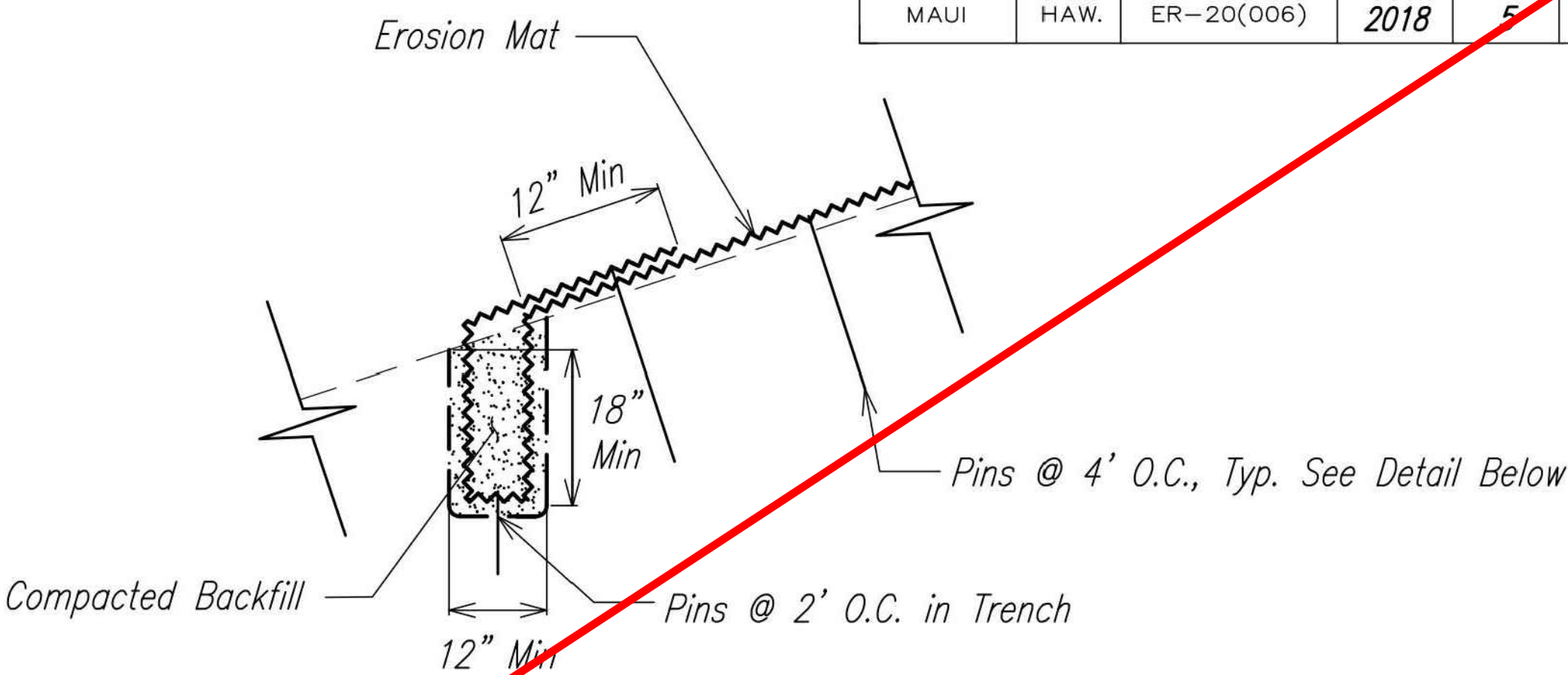
FED. ROAD DIST. NO.	STATE	PROJ. NO.	FISCAL YEAR	SHEET NO.	TOTAL SHEETS
MAUI	HAW.	ER-20(006)	2018	5	16



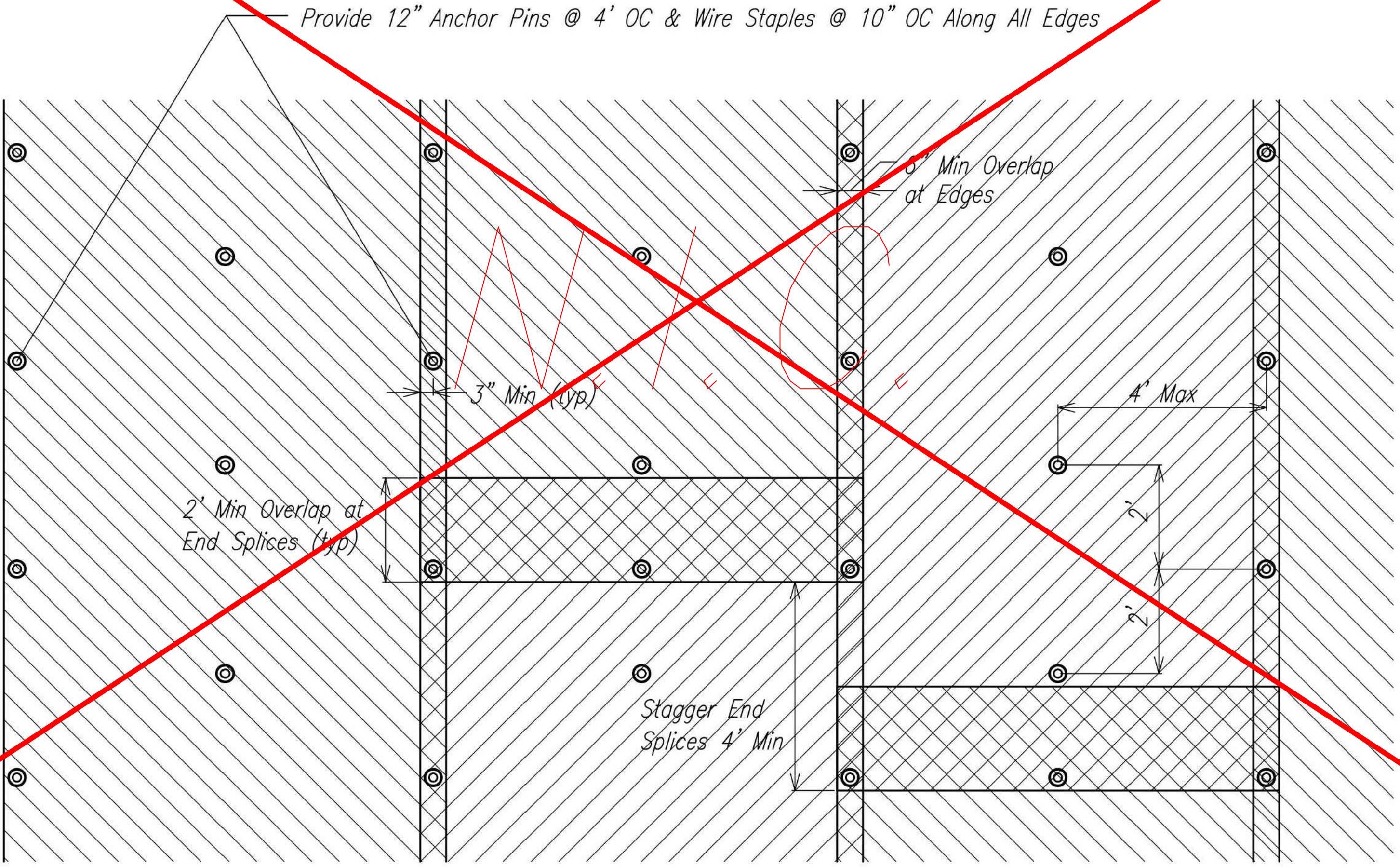
**TOP ANCHOR TRENCH DETAIL**  
Not to Scale



**PIN DETAIL**  
Not to Scale



**BOTTOM ANCHOR TRENCH DETAIL**  
Not to Scale



**EROSION MAT/ANCHOR STAKE LAYOUT**  
Not to Scale

**Notes:**

1. Unless otherwise noted on the plans, remove existing trees (12" or smaller) and clear vegetation within erosion mat limits, grade back any vertical and/or overhanging soil areas, provide a smooth slope surface, and hydroseed prior to erosion mat installation.
2. Contractor shall follow the Manufacturer's guidelines for installation of erosion matting around trees that exceed 12" in diameter.
3. Contractor shall stake-out the proposed erosion mat areas in the field for review and approval by the Engineer prior to erosion mat installation.
4. Field modifications for trench construction may be necessary due to steepness of slope, existing drainage structures, etc.

LEGEND FOR AS-BUILT POSTINGS	
	Squiggly line for as-built deletion
	Double line for as-built deletion
Roadway	Text for as-built posting

STATE OF HAWAII  
DEPARTMENT OF TRANSPORTATION  
HIGHWAYS DIVISION

**Erosion Mat Details**

**EMERGENCY REPAIRS AT PIINAU BRIDGE**  
**HANA HIGHWAY, NEAR MILEPOST 17.0**  
**PROJECT NO. ER-20(006), UNIT 1**  
Scale: As Noted Date: September 2018

SHEET No. 5 OF 16 SHEETS

"AS-BUILT"