

General Notes:

1. The Scope of Work for this project consists of widening an existing one-lane bridge/box culvert at Mile Marker 33.74 of Hana Highway, Route 360.
2. The Contractor is reminded of the requirements of Subsection 105.16 - Subletting of Contract, which requires him to perform work amounting to not less than 30 percent of the total contract cost less deductible items. Non-compliance with this Subsection may be grounds for rejection of bid.
3. The Contractor's attention is directed to the following Sections of the Standard Specifications and Special Provisions: Section 107 - Legal Relations and Responsibility to Public; and Section 645 - Work Zone Traffic Control.

General Notes (Cont'd):

4. At the end of each day's work, the Contractor shall remove all equipment and other obstructions to permit free and safe passage of public traffic.
5. The existence and location of underground utilities, manholes, monuments and structures as shown on the plans are from the latest available data but the accuracy is not guaranteed. The encountering of other obstacles during the course of work is possible. The Contractor shall be held liable for any damages incurred to the existing facilities and/or improvements as a result of his operations.
6. The Contractor shall notify the Engineer in writing, two (2) weeks prior to starting any paving operations.
7. Existing drainage system will be functional at all times during construction. The Contractor is to furnish materials, equipment, labor, tools and incidentals necessary to maintain flow. This work shall be considered incidental to various contract items.
8. The Contractor shall provide for access to and from all existing driveways at all times. The Contractor shall coordinate with Property Owner if driveway closure is required.

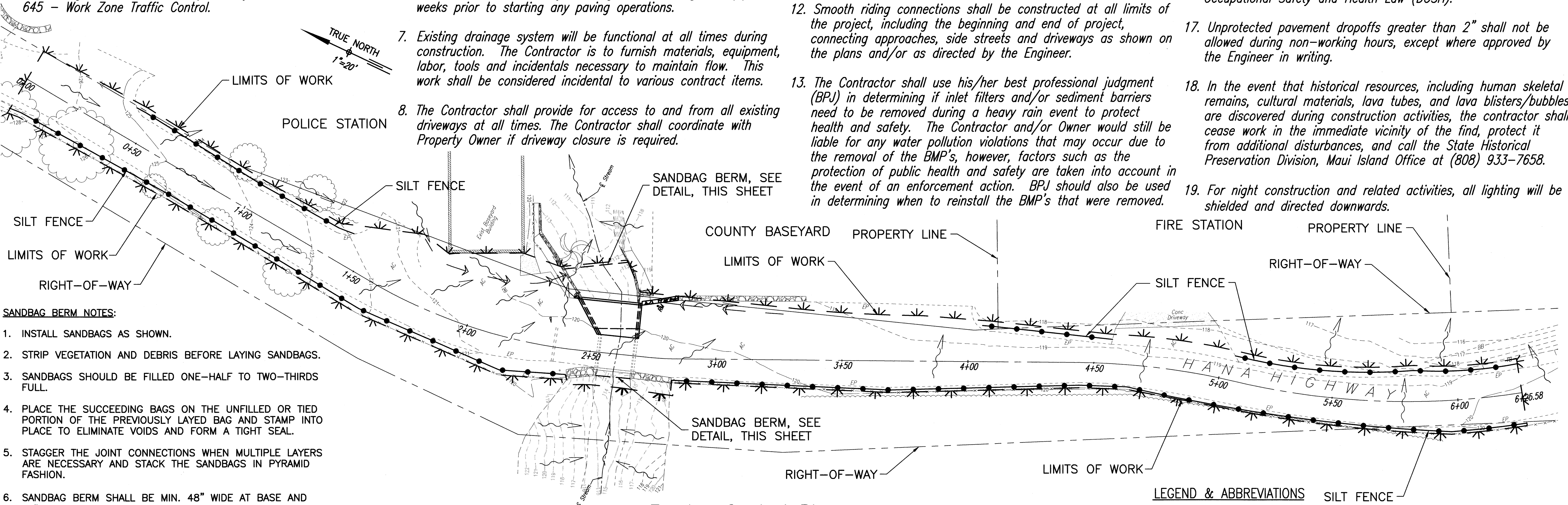
General Notes (Cont'd):

9. All saw cutting work shall be considered incidental to contract items.
10. The Contractor shall remove and dispose of all existing raised pavement markers and preformed pavement marking tape prior to the overlaying of Asphalt Concrete Pavement. The work shall be incidental to Asphalt Concrete Pavement.
11. All holes, depressions and wheel ruts shall be filled and compacted with Asphalt Concrete Pavement, Mix No. V prior to resurfacing. This work shall be incidental to Asphalt Concrete Pavement.
12. Smooth riding connections shall be constructed at all limits of the project, including the beginning and end of project, connecting approaches, side streets and driveways as shown on the plans and/or as directed by the Engineer.
13. The Contractor shall use his/her best professional judgment (BPJ) in determining if inlet filters and/or sediment barriers need to be removed during a heavy rain event to protect health and safety. The Contractor and/or Owner would still be liable for any water pollution violations that may occur due to the removal of the BMP's, however, factors such as the protection of public health and safety are taken into account in the event of an enforcement action. BPJ should also be used in determining when to reinstall the BMP's that were removed.

FED. ROAD DIST. NO.	STATE	PROJ. NO.	FISCAL YEAR	SHEET NO.	TOTAL SHEETS
HAWAII	HAW.	360B-01-03	2012	3	20

General Notes (Cont'd):

14. The Contractor shall clean and remove any accumulation of aggregates along the roadside within 15 feet of the edge of pavement. This work shall be considered incidental to the various contract items.
15. All necessary permits shall be obtained by the Contractor at his own cost.
16. The Contractor shall comply with the State of Hawaii's Occupational Safety and Health Law (DOSH).
17. Unprotected pavement dropoffs greater than 2" shall not be allowed during non-working hours, except where approved by the Engineer in writing.
18. In the event that historical resources, including human skeletal remains, cultural materials, lava tubes, and lava blisters/bubbles are discovered during construction activities, the contractor shall cease work in the immediate vicinity of the find, protect it from additional disturbances, and call the State Historical Preservation Division, Maui Island Office at (808) 933-7658.
19. For night construction and related activities, all lighting will be shielded and directed downwards.

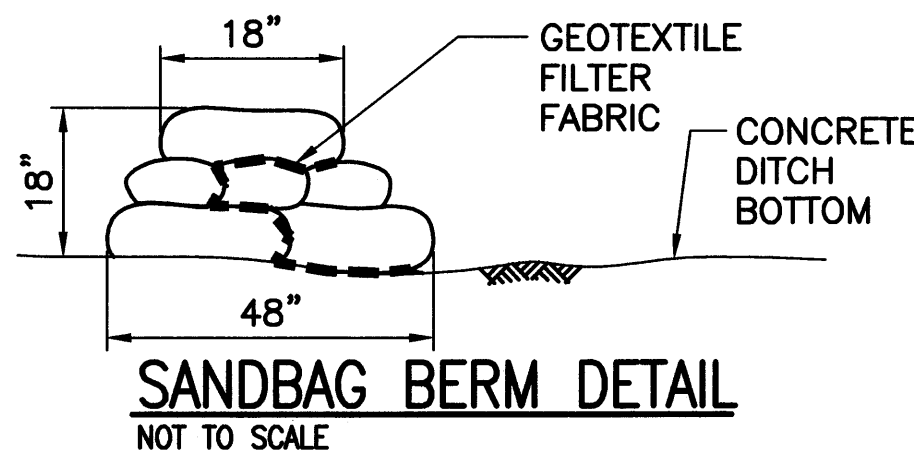


SANDBAG BERM NOTES:

1. INSTALL SANDBAGS AS SHOWN.
2. STRIP VEGETATION AND DEBRIS BEFORE LAYING SANDBAGS.
3. SANDBAGS SHOULD BE FILLED ONE-HALF TO TWO-THIRDS FULL.
4. PLACE THE SUCCEEDING BAGS ON THE UNFILLED OR TIED PORTION OF THE PREVIOUSLY LAYED BAG AND STAMP INTO PLACE TO ELIMINATE VOIDS AND FORM A TIGHT SEAL.
5. STAGGER THE JOINT CONNECTIONS WHEN MULTIPLE LAYERS ARE NECESSARY AND STACK THE SANDBAGS IN PYRAMID FASHION.
6. SANDBAG BERM SHALL BE MIN. 48" WIDE AT BASE AND 18" WIDE AT CREST.
7. SANDBAGS SHALL BE COMPOSED OF POLYPROPYLENE-, POLYETHYLENE- OR POLYAMIDE-WOVEN FABRIC, WITH MINIMUM UNIT WEIGHT 4 OUNCES PER SQUARE YARD, MULLEN BURST STRENGTH EXCEEDING 300 PSI AND ULTRAVIOLET STABILITY EXCEEDING 70 PERCENT.
8. GRADE OF MATERIAL IN SANDBAGS SHALL BE COARSE SAND OR GRAVEL.
9. INSTALL SANDBAGS ALONG THE LOWSIDE OF PARKING LOT.

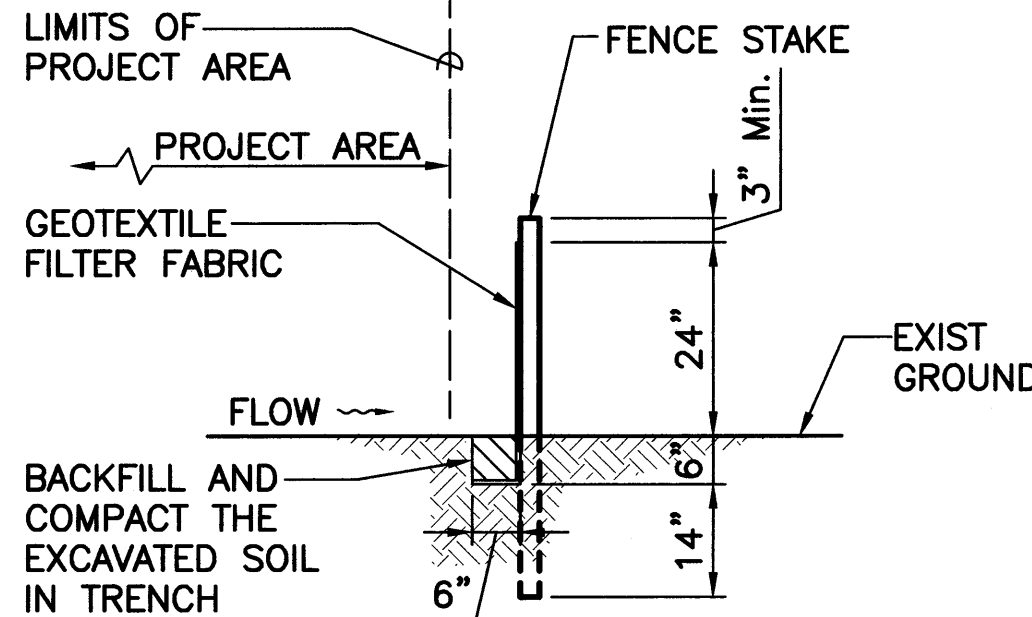
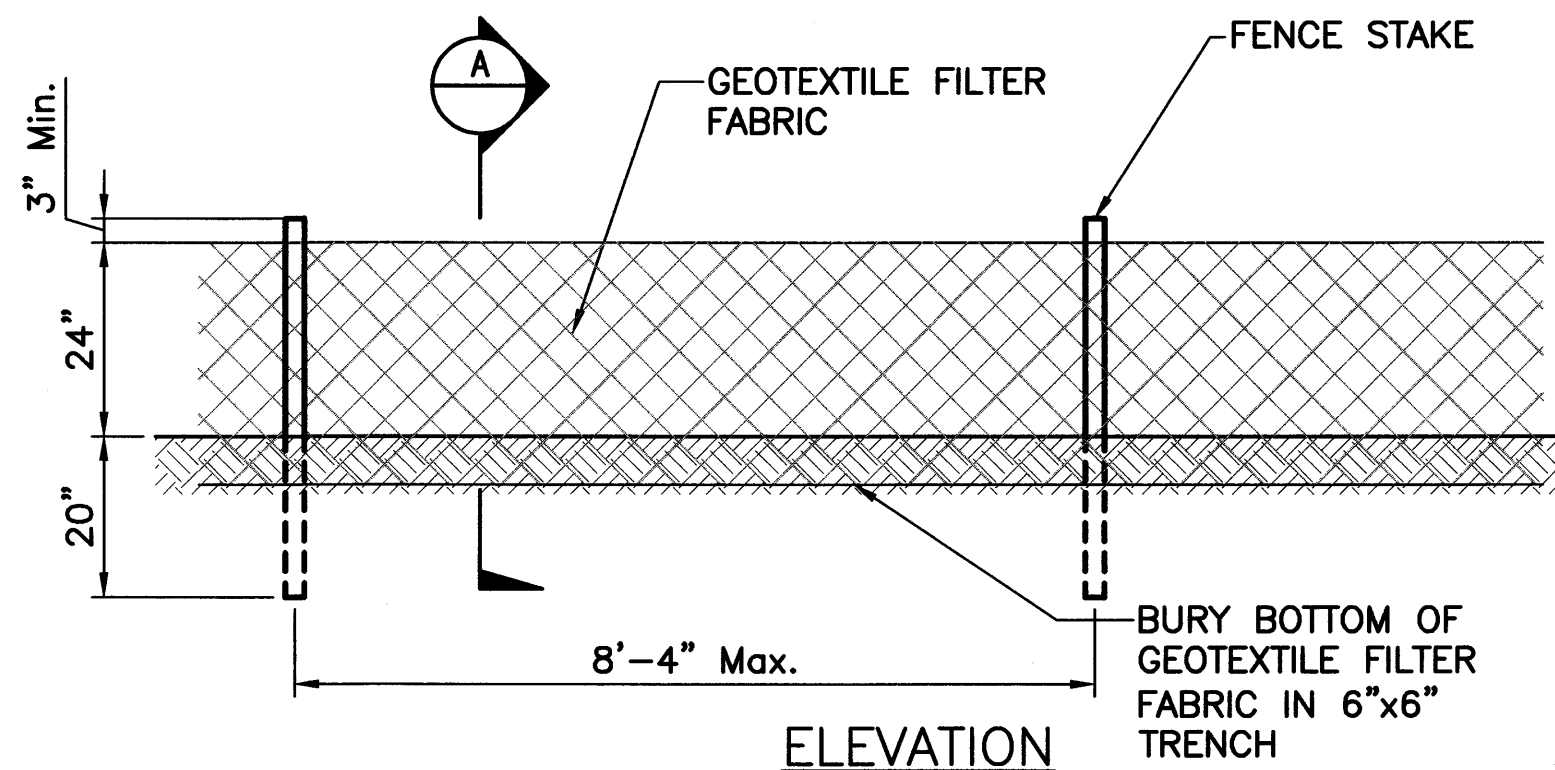
TYPICAL DIMENSIONS PER SANDBAG

WIDTH: 16" TO 18"
LENGTH: 24" TO 30"
THICKNESS: 6" TO 8"
WEIGHT: 90 TO 125 POUNDS



Erosion Control Plan

Scale: 1" = 20'

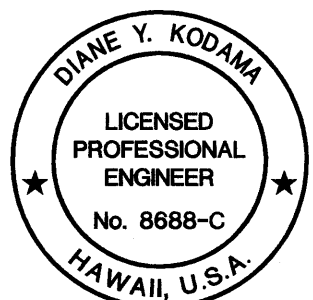


NOTES:

1. THE FILTER FABRIC SHALL BE A MINIMUM OF 36 INCHES WIDE.
2. IF SILT FENCE IS OBTAINED FROM MANUFACTURER AS A PACKAGE (I.E. FABRIC ATTACHED TO POST) THE MANUFACTURER'S INSTALLATION INSTRUCTION SHALL BE ADHERED TO.
3. FENCE STAKES MAY BE WOOD OR METAL, MUST BE CAPABLE OF SUPPORTING ANTICIPATED LOADS.

LEGEND & ABBREVIATIONS

- 120 EXISTING INDEX CONTOUR
- 119 EXISTING INTERMEDIATE CONTOUR
- DIRECTION OF SURFACE RUNOFF
- PROPERTY LINE
- SILT FENCE
- SANDBAG BERM
- LIMITS OF WORK



THIS WORK WAS PREPARED BY ME OR UNDER MY SUPERVISION.

STATE OF HAWAII
DEPARTMENT OF TRANSPORTATION
HIGHWAYS DIVISION

**GENERAL NOTES & EROSION
CONTROL PLAN AND DETAILS**

ROUTE 360 HANA HIGHWAY
IMPROVEMENTS
UAKA ROAD TO KEAWA PLACE
Project No. 360B-01-03

Scale: _____ Date: December 2011

SHEET No. 3 OF 13 SHEETS