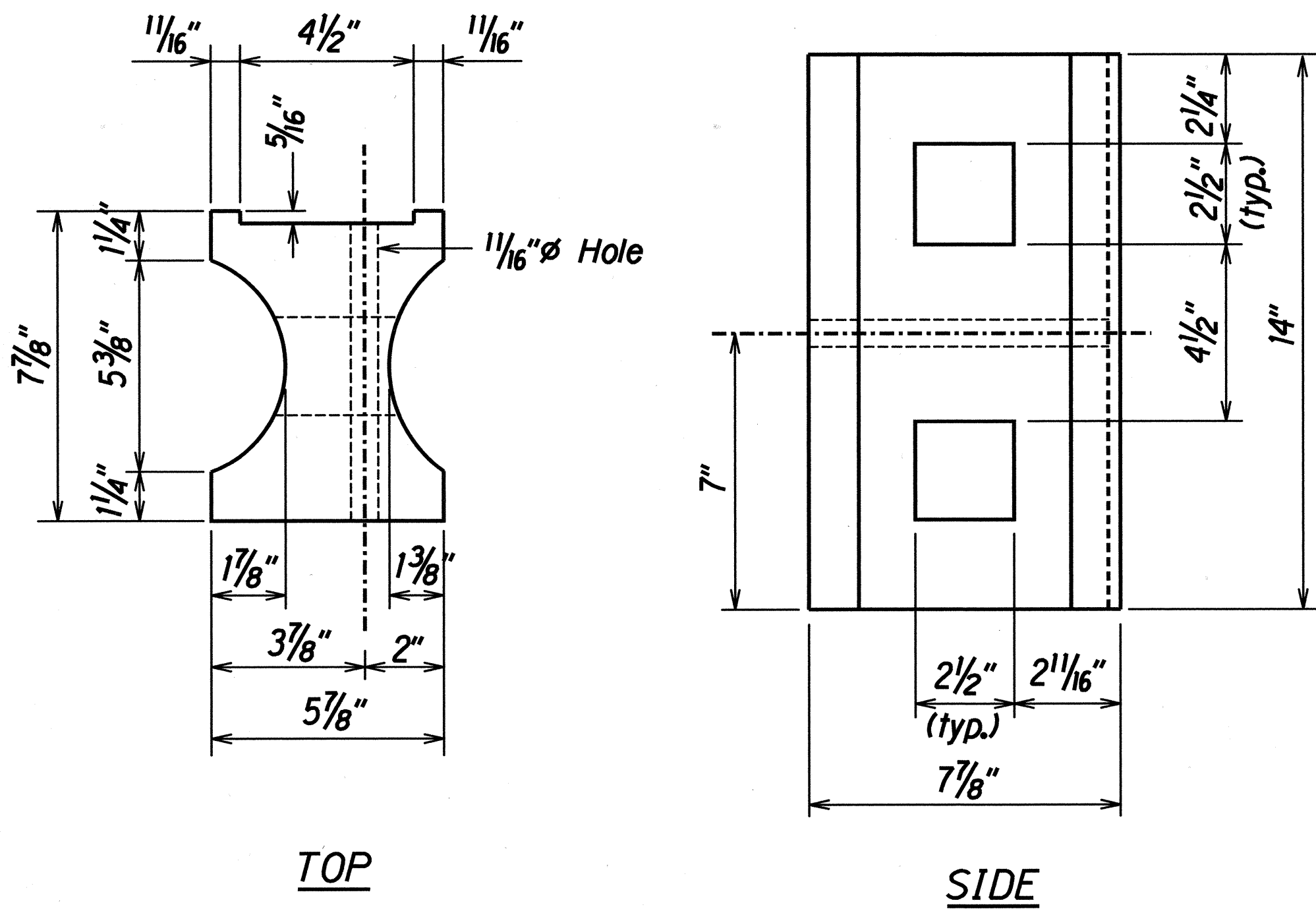


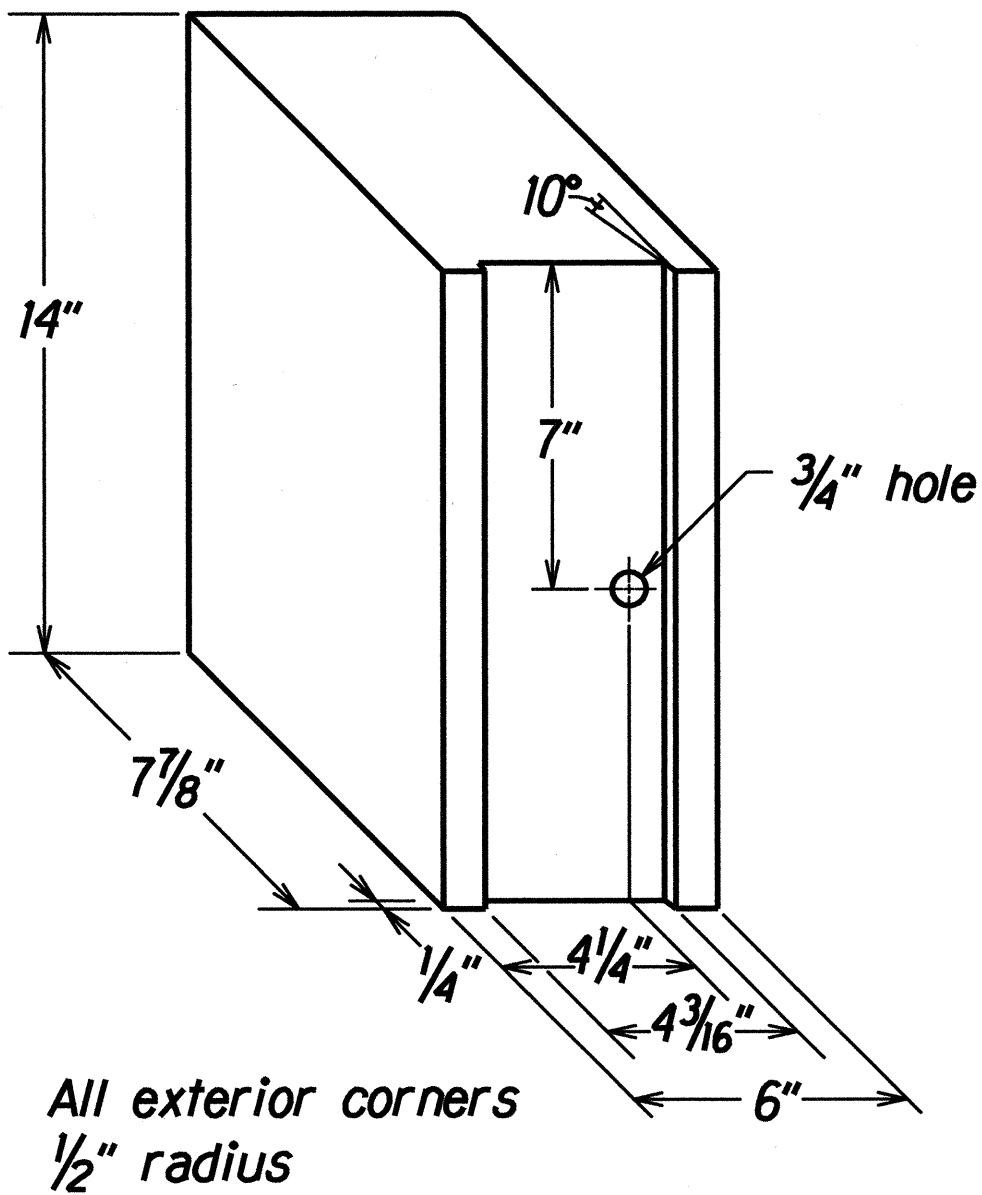
GENERAL NOTES

- All hardware, posts and fasteners shall be hot-dip zinc coated galvanized after fabrication. No punching, drilling or cutting will be permitted after galvanizing.
- Where conditions require, special post lengths in increments of 6 inches may be specified.
- All fasteners, posts, and rail elements (i.e. FBB03, PWE01, RWM02b, etc.) shall conform to the latest edition and amendments of "A Guide to Standardized Highway Barrier Rail Hardware," a report prepared and approved by the AASHTO-AGC-ARTBA Joint Cooperative Committee, Subcommittee On New Highway Materials, Task Force 13 Report. Dimensions of fastners, posts and rail elements have been converted from metric units into their present form.
- The Recycled Plastic Block or Offset Block shall be approved by the State.
- After the guardrail posts are installed in the paved area, the Contractor shall grout around the guardrail post and seal all cracks in the paved area that was caused during the guardrail post installation. If required by the inspector/engineer, the Contractor shall tamper the paved area around the guardrail post prior to grouting. The cost for this work shall not be paid for separately, but shall be considered incidental to the various guardrail items.
- When standards for the fill slope area cannot be met, a site specific, engineer approved design may be used.

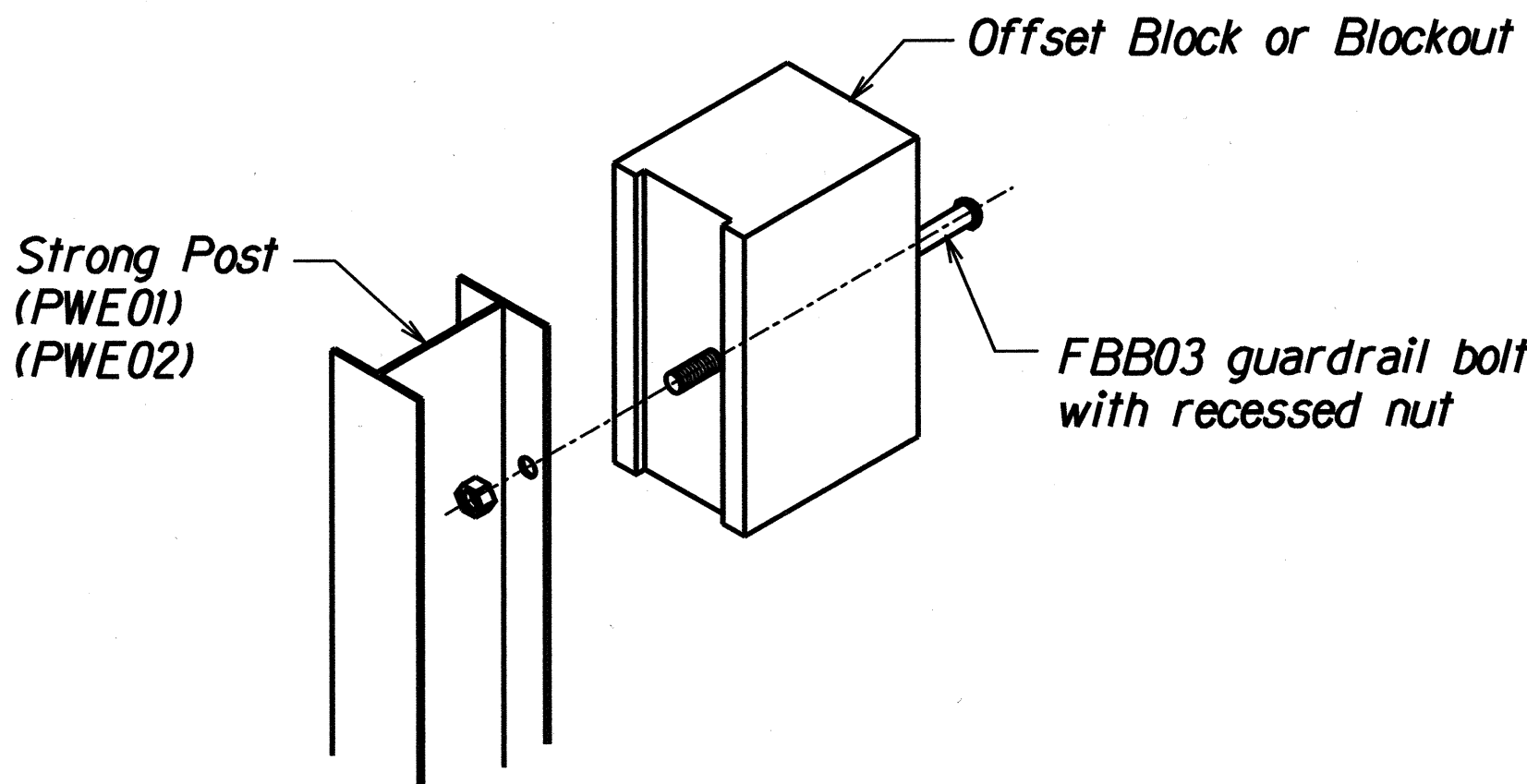
GUARDRAIL TYPE	DIMENSION		
	H	A	B
Strong Post w/W Beam	1'-9 ⁵ / ₈ "	1'-6"	1'-0"
Rubrail	2'-0"	1'-6"	2'-0"
Modified Thrie Beam	2'-0"	2'-0"	1'-0"



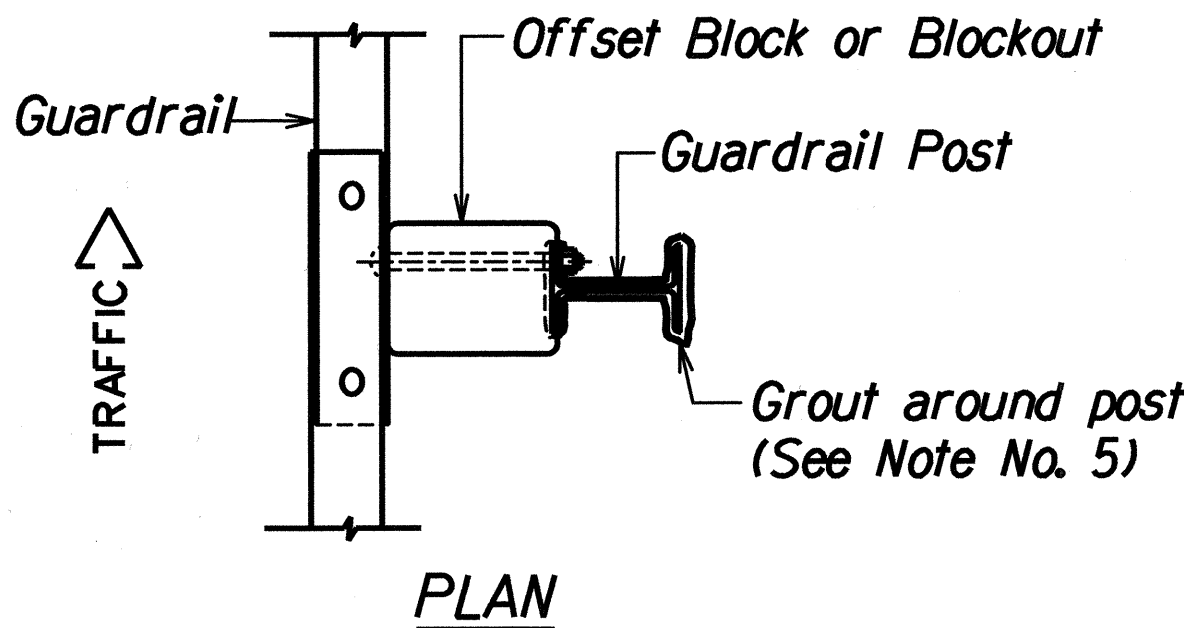
TOP
SIDE
RECYCLED PLASTIC BLOCKOUT (TYPE I)



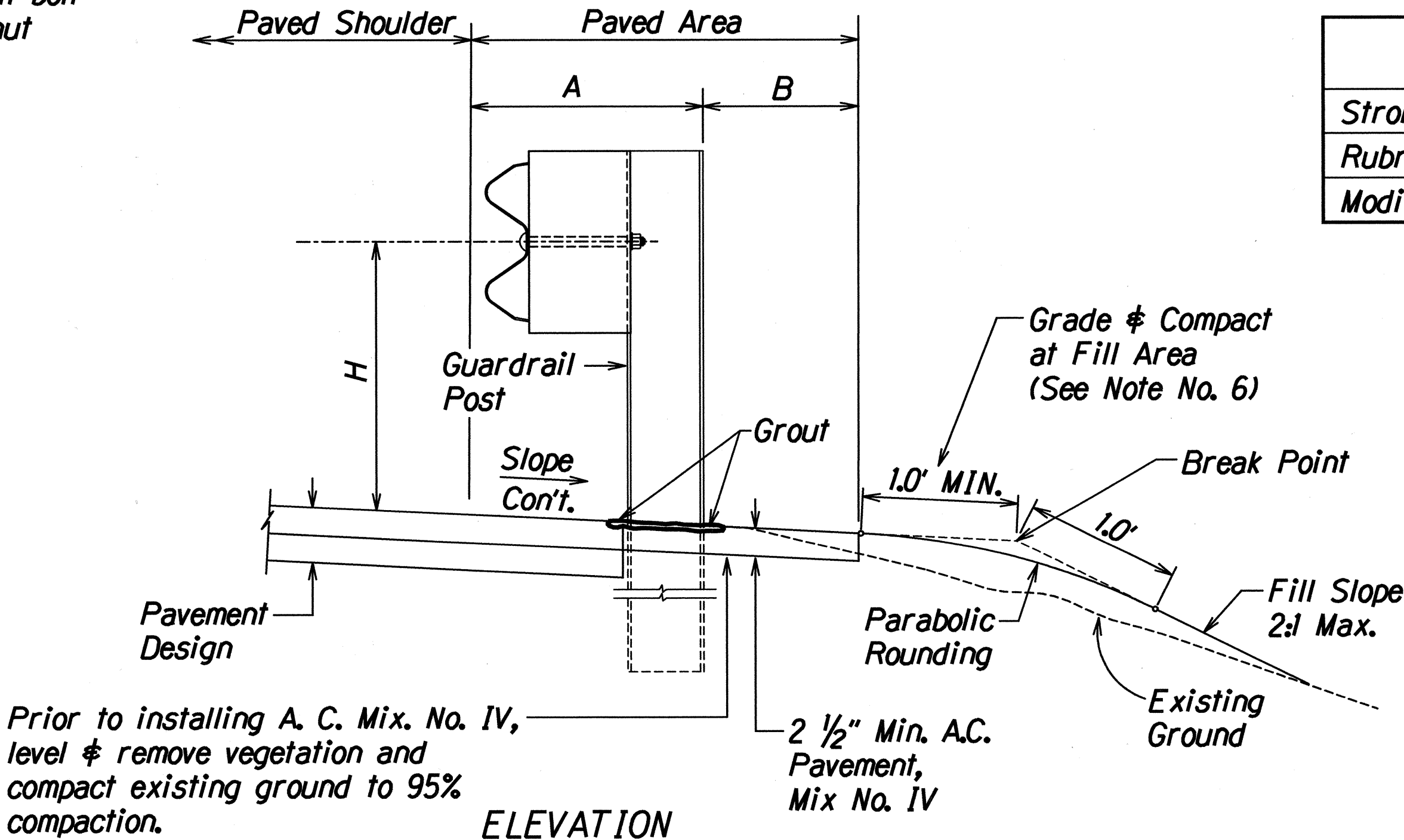
RECYCLED POLYETHYLENE
OFFSET BLOCK (TYPE II)



Exploded View
(Rail and washer not shown)
STEEL POST AND BLOCK DETAIL



PLAN



ELEVATION

TYPICAL GUARDRAIL INSTALLATION



THIS WORK WAS PREPARED BY ME
OR UNDER MY DIRECT SUPERVISION

J. R. Tanaka 02/13/01
R. T. TANAKA ENGINEERS, INC.

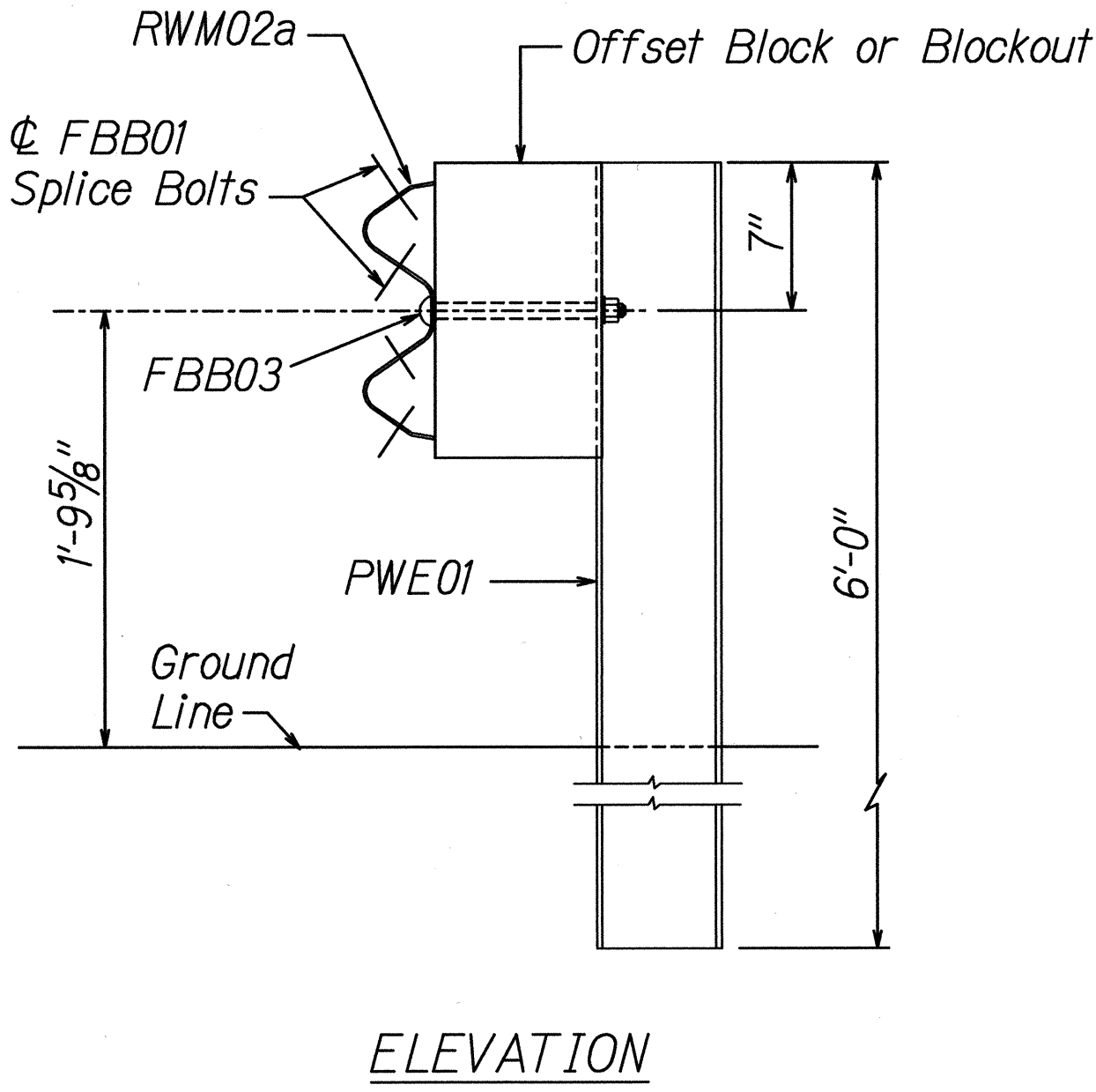
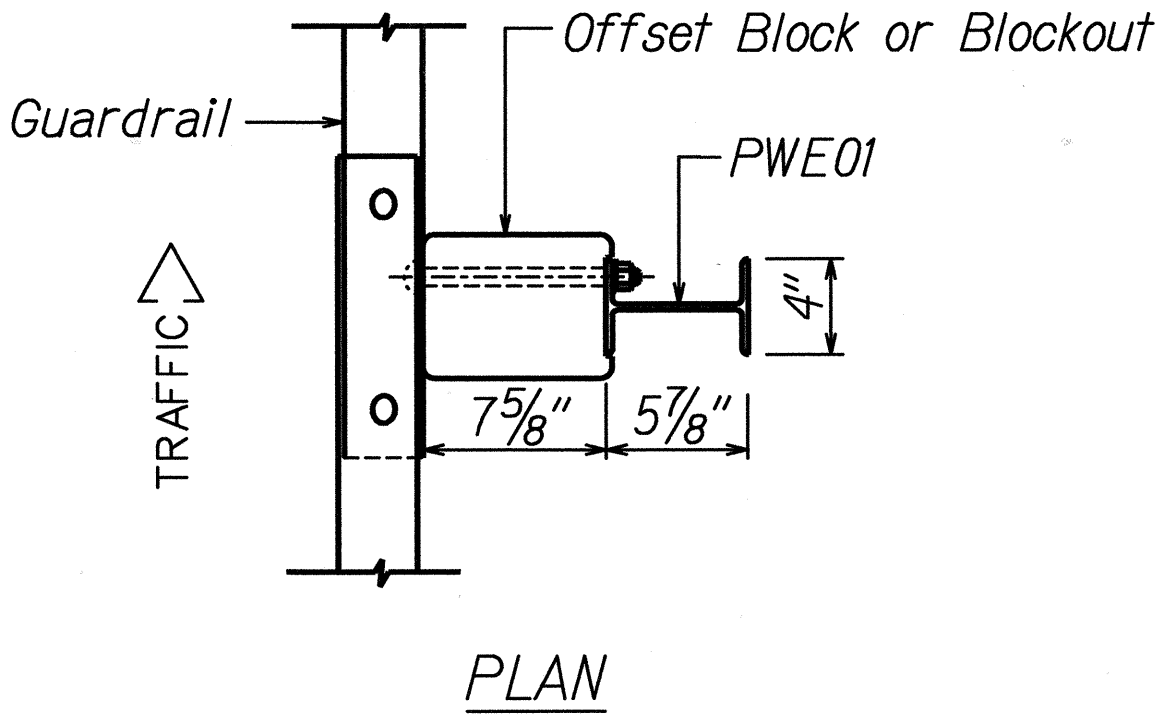
STATE OF HAWAII
DEPARTMENT OF TRANSPORTATION
HIGHWAYS DIVISION

GUARDRAIL DETAILS AND NOTES

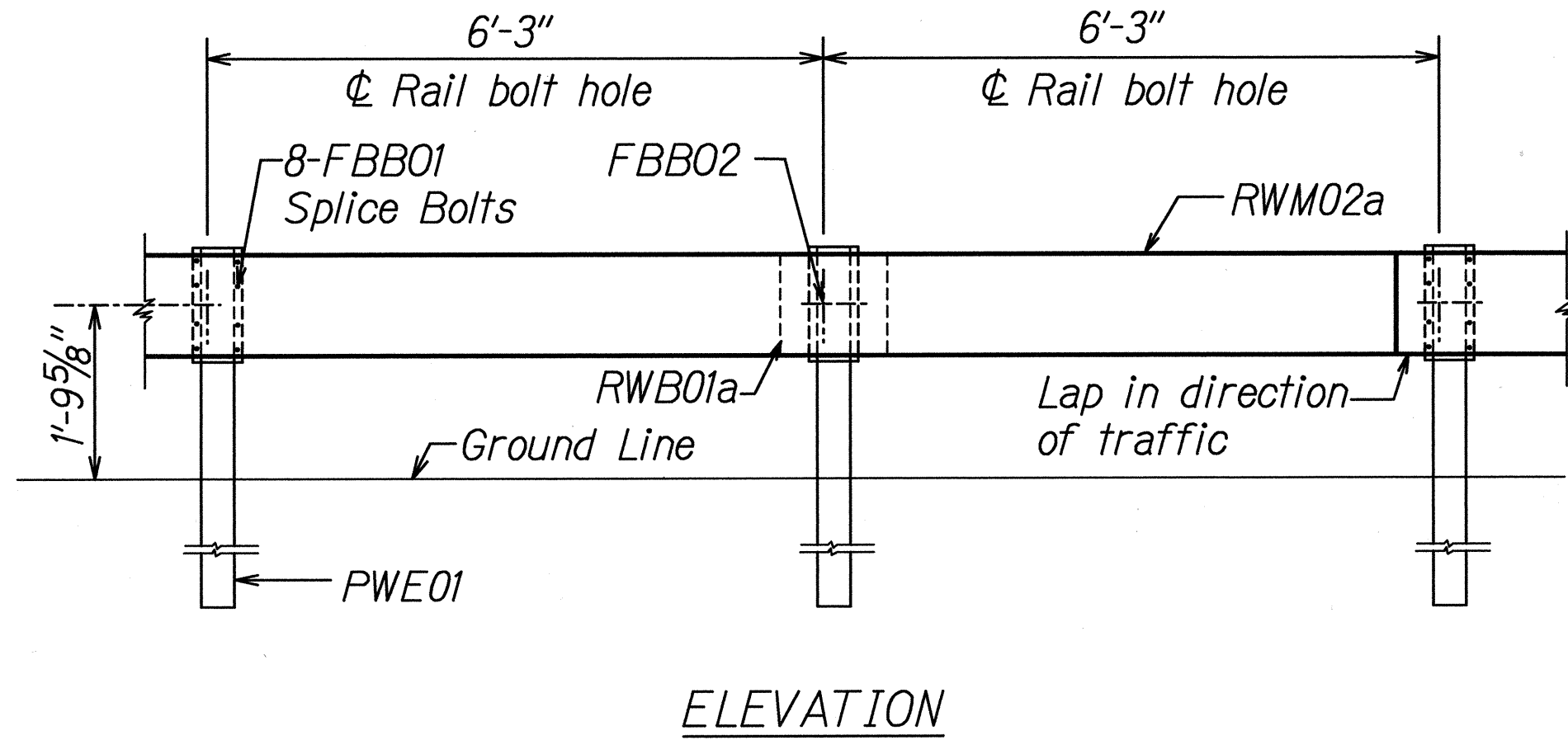
HANA HIGHWAY
EMERGENCY FEDERAL-AID PROJECT
ROADWAY REPAIRS
AT VARIOUS LOCATIONS
FED. AID PROJ. NO. ER-12(5)

SCALE: AS NOTED

DATE: FEBRUARY 2001

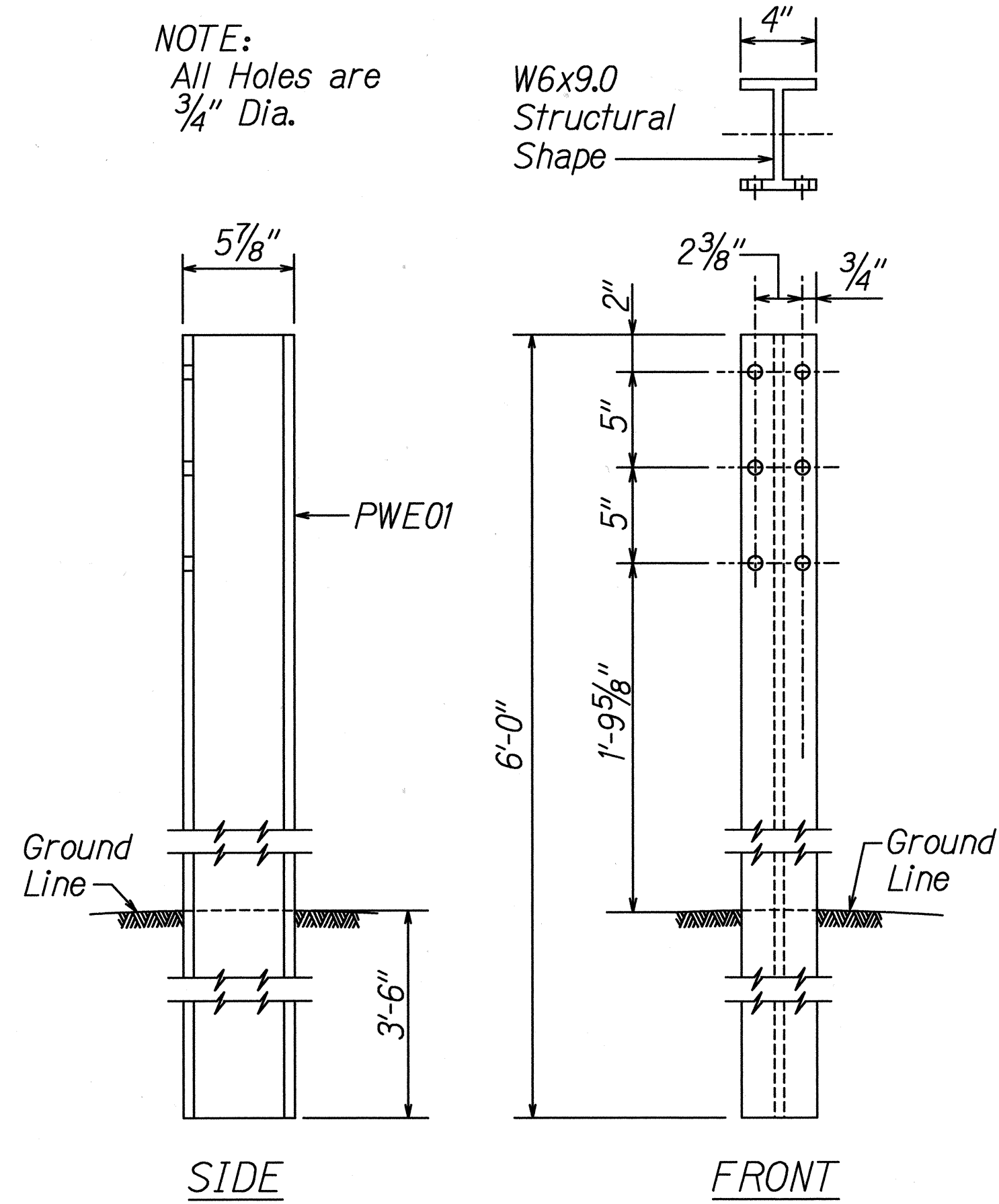


STRONG POST W-BEAM GUARDRAIL (SGR04a)

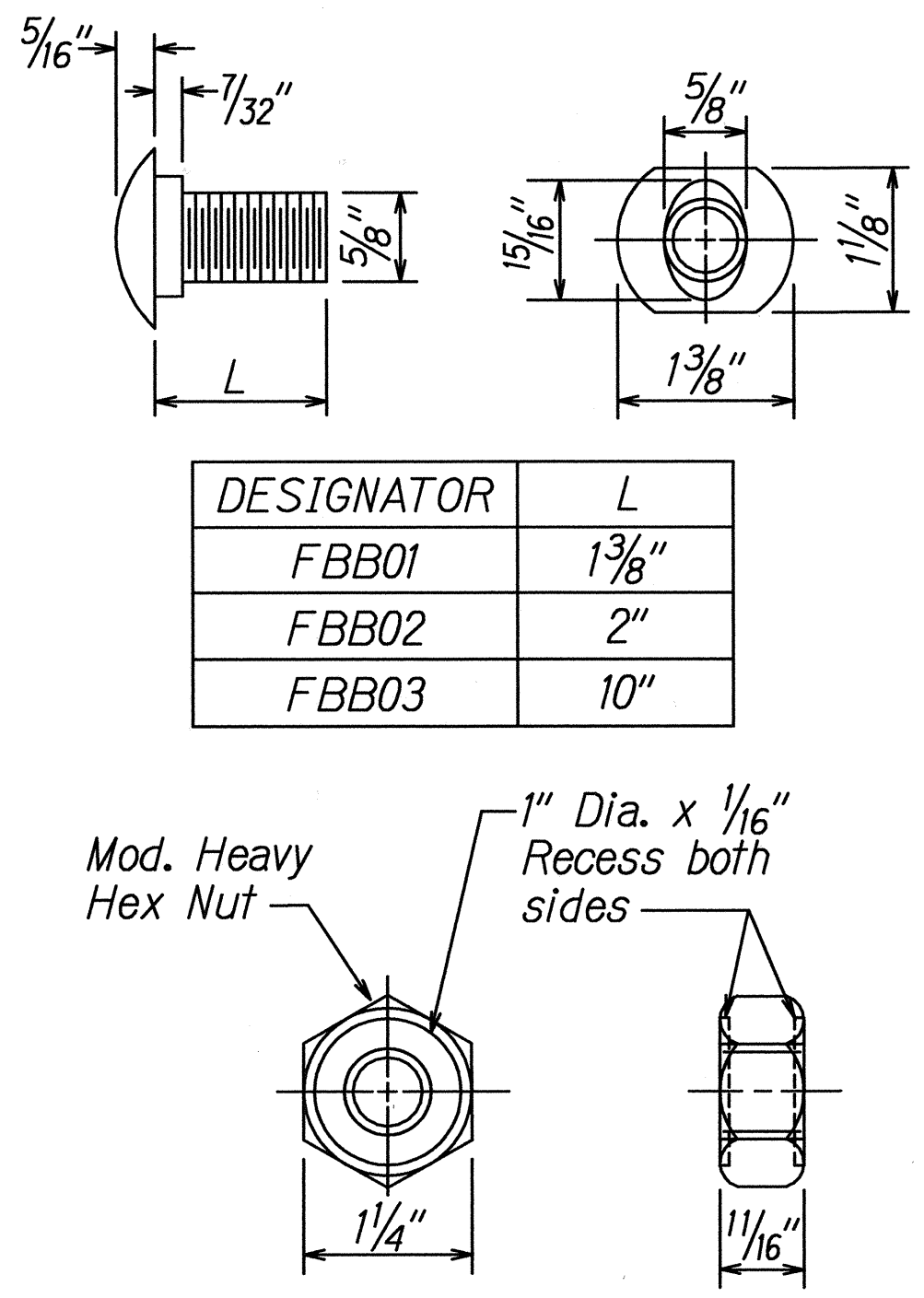


STRONG POST W-BEAM GUARDRAIL WITH RECYCLED OFFSET BLOCK OR PLASTIC BLOCKOUT

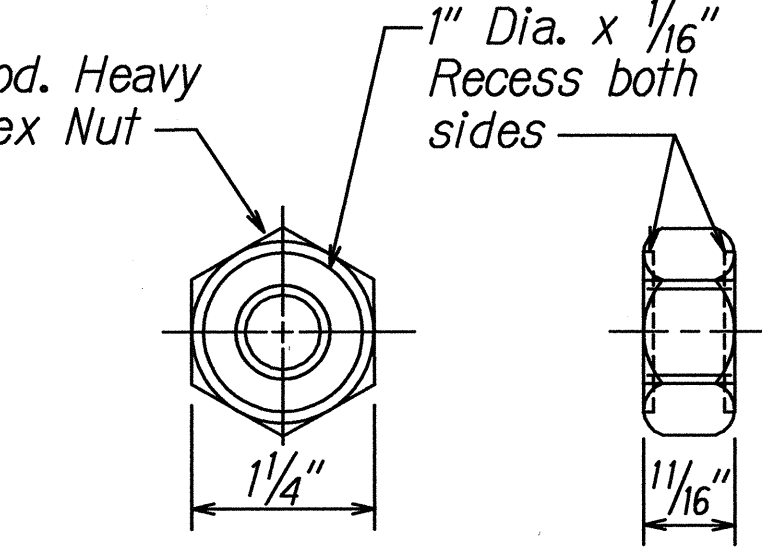
NOTE:
All Holes are 3/4" Dia.



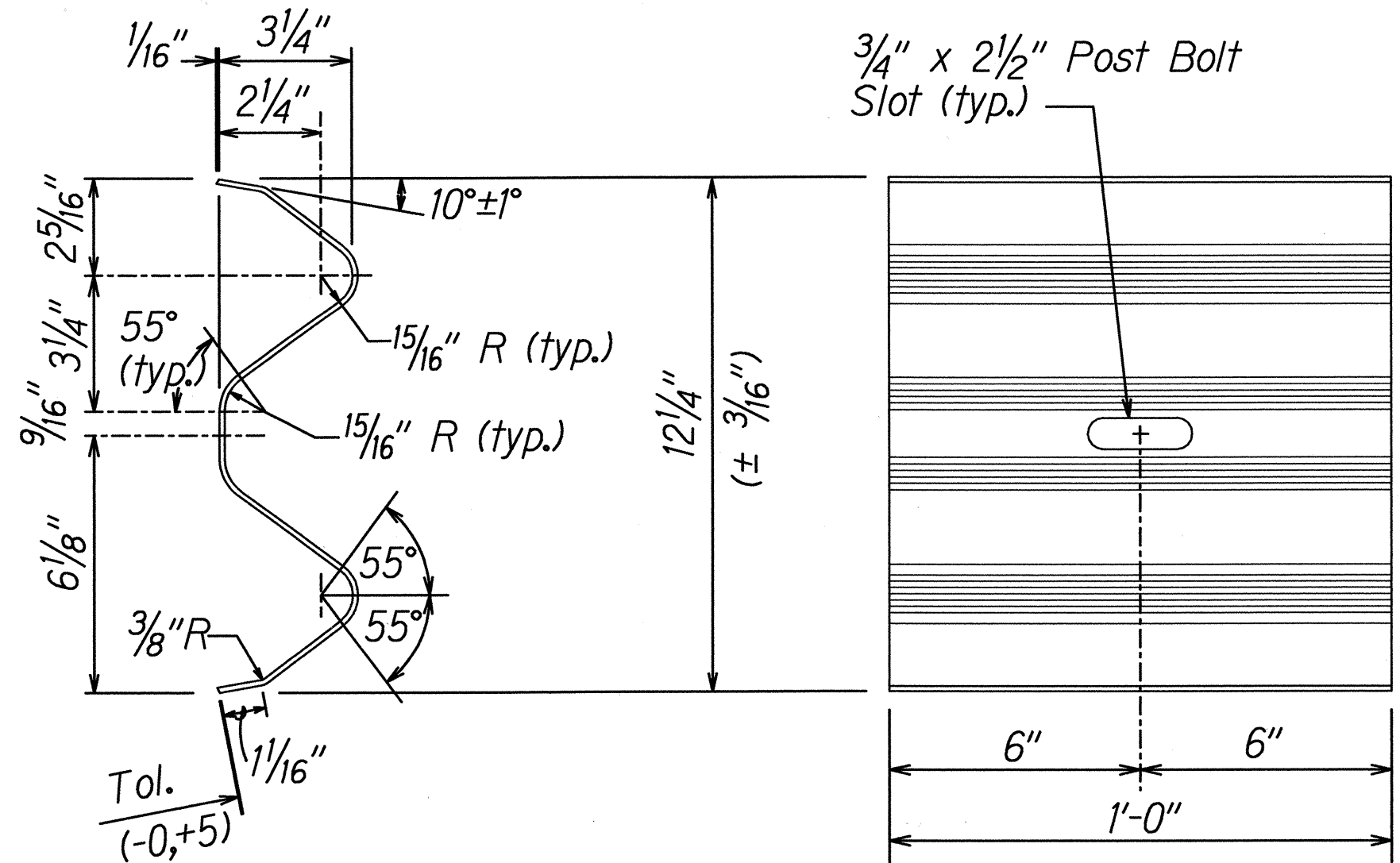
W-BEAM STRONG POST (PWE01)



DESIGNATOR	L
FBB01	1 3/8"
FBB02	2"
FBB03	10"

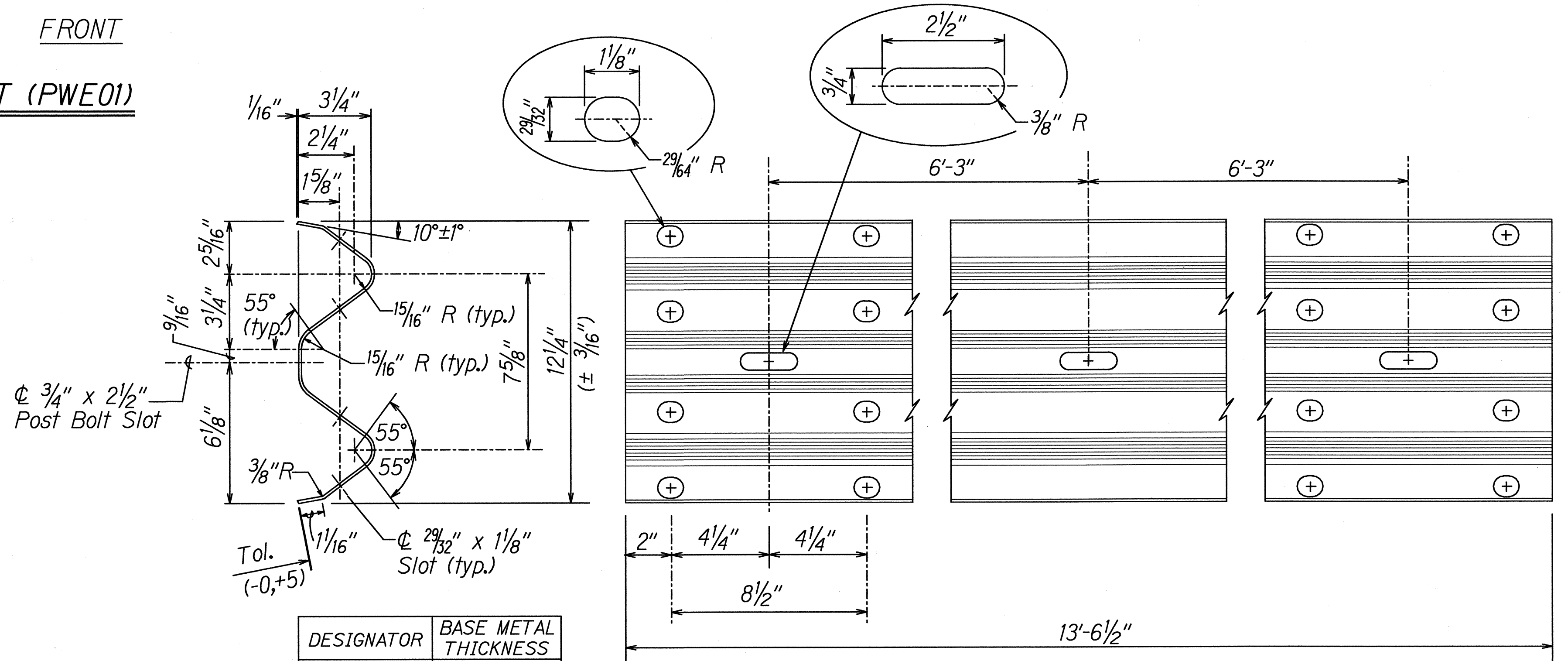


GUARDRAIL BOLTS AND RECESSED NUT



DESIGNATOR	BASE METAL THICKNESS
RWB01a	12 Gauge

W-BEAM BACK-UP-PLATE (RWB01a)



DESIGNATOR	BASE METAL THICKNESS
RWM02a	12 Gauge

2 SPACE W-BEAM GUARDRAIL (RWM02a)

STATE OF HAWAII
DEPARTMENT OF TRANSPORTATION
HIGHWAYS DIVISION

STRONG POST
W-BEAM GUARDRAIL

HANA HIGHWAY
EMERGENCY FEDERAL-AID PROJECT
ROADWAY REPAIRS
AT VARIOUS LOCATIONS
FED. AID PROJ. NO. ER-12(5)

SCALE: AS NOTED

DATE: FEBRUARY 2001

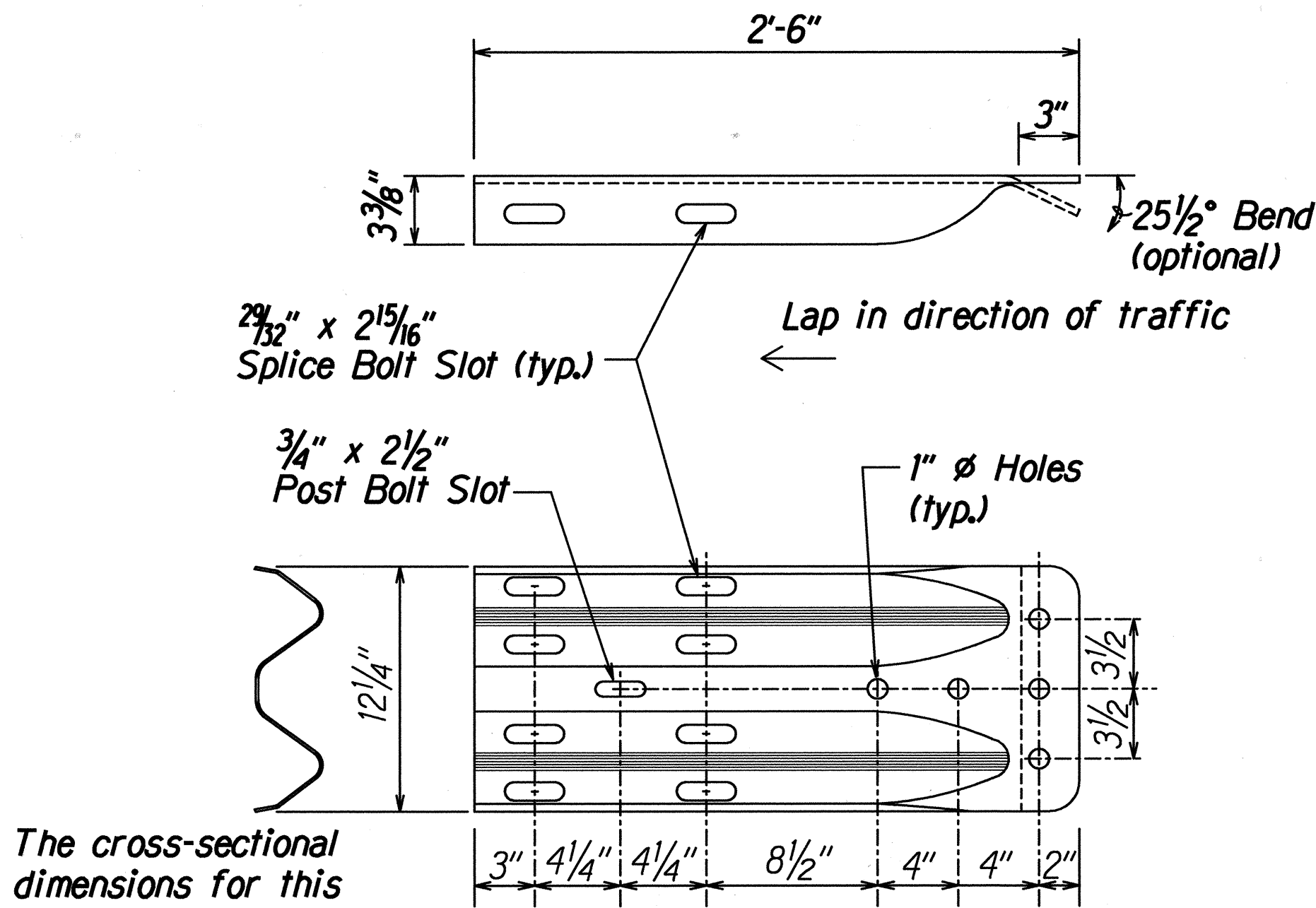
SHEET No. 1 OF 2 SHEET



THIS WORK WAS PREPARED BY ME
OR UNDER MY DIRECT SUPERVISION
J. T. Tanaka 02/15/01
R. T. TANAKA ENGINEERS, INC.

ORIGINAL PLAN	DATE
DESIGNED BY	
TRACED BY	
NOTED BY	
QUANTITIES BY	
CHECKED BY	

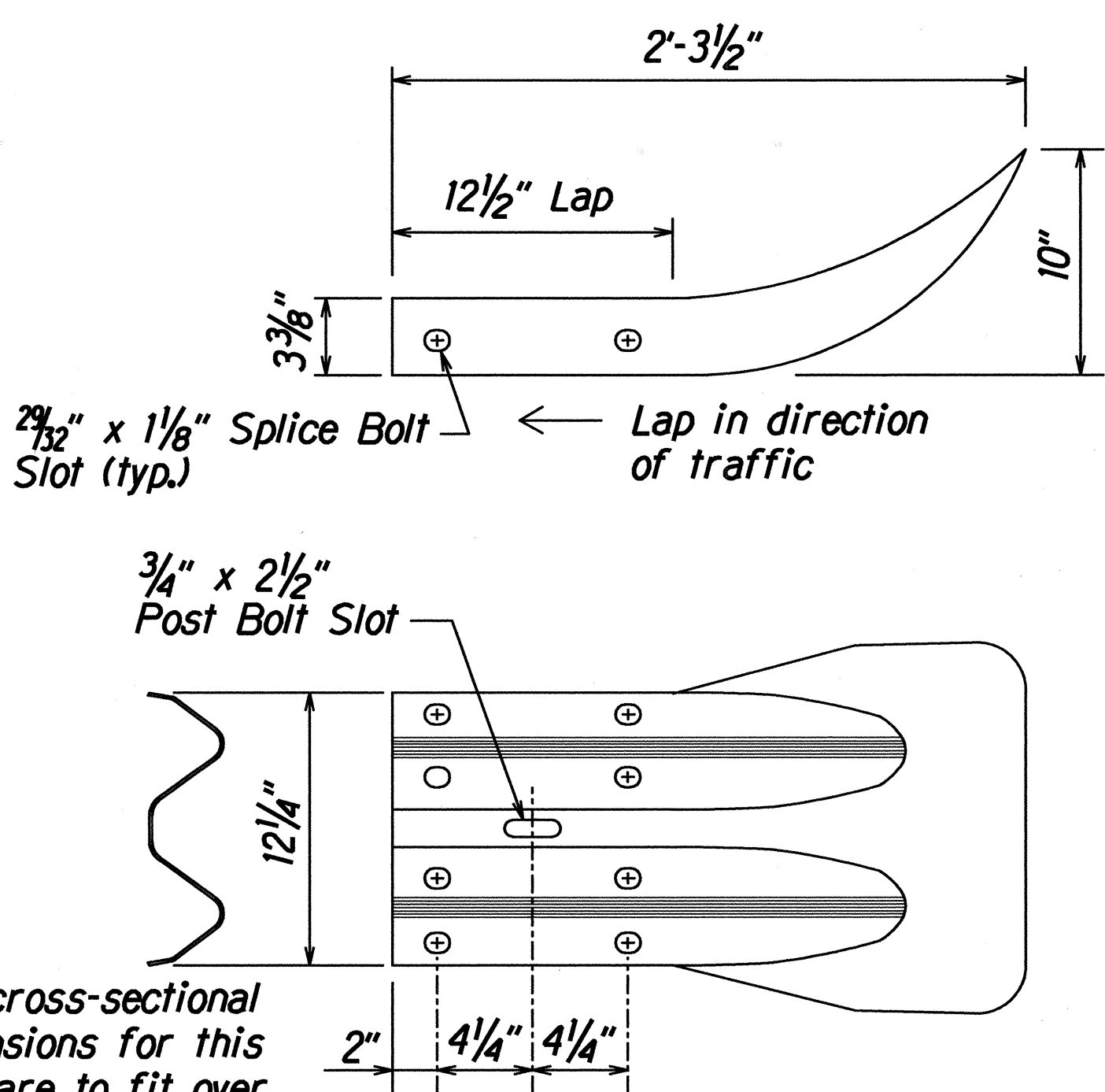
11/31/2000 tdruby/guardrail/wbeams.dgn (standard plan TE-50 103/06/87)



The cross-sectional dimensions for this part are to fit over part RWM02b on the approach end and under part RWM02b on the trailing end.

DESIGNATOR	BASE METAL THICKNESS
RWE02b	10 Gauge

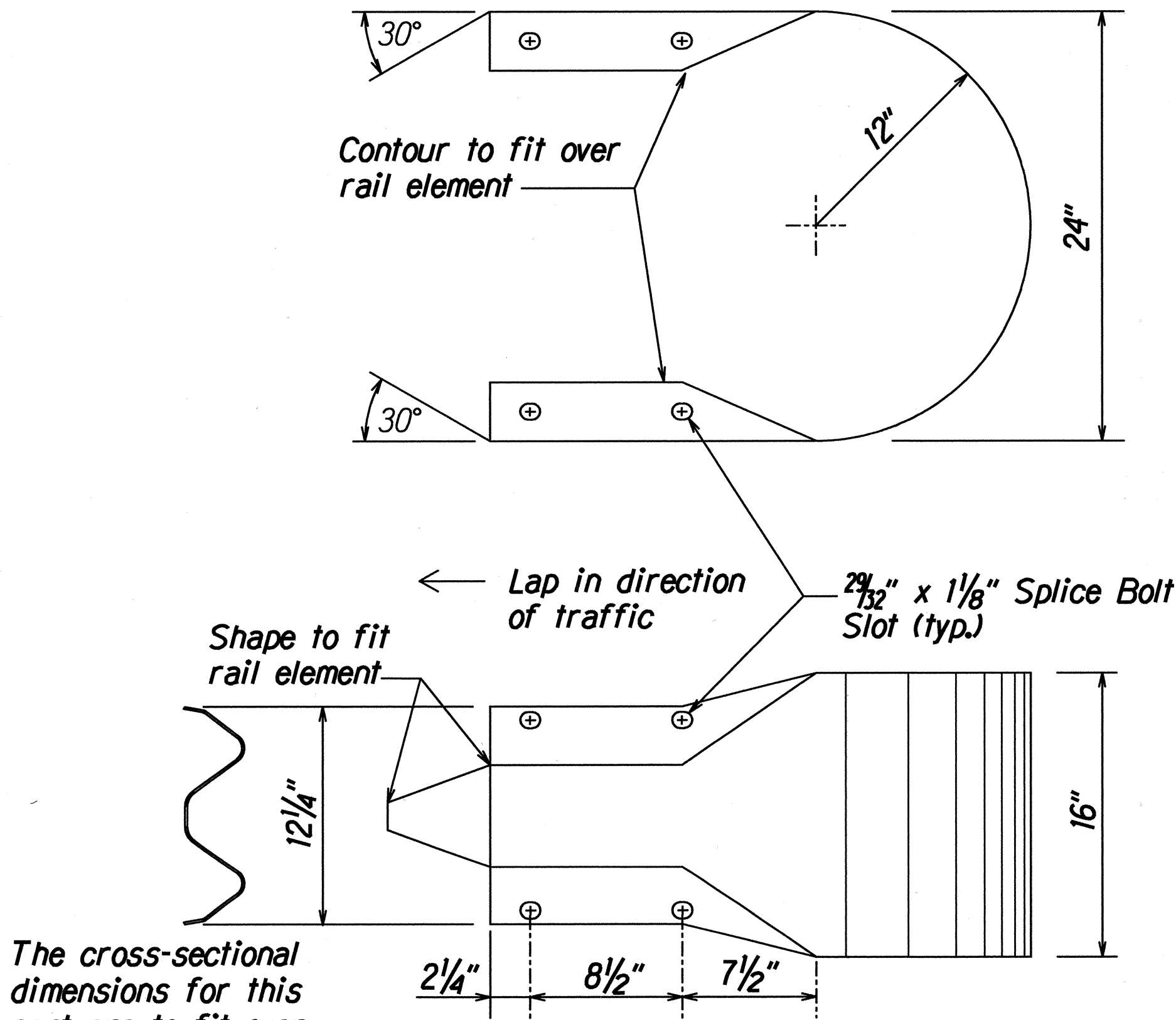
W-BEAM TERMINAL CONNECTOR (RWE02b)



The cross-sectional dimensions for this part are to fit over part RWM02a on the approach end and under part RWM02a on the trailing end.

DESIGNATOR	BASE METAL THICKNESS
RWE01a	12 Gauge

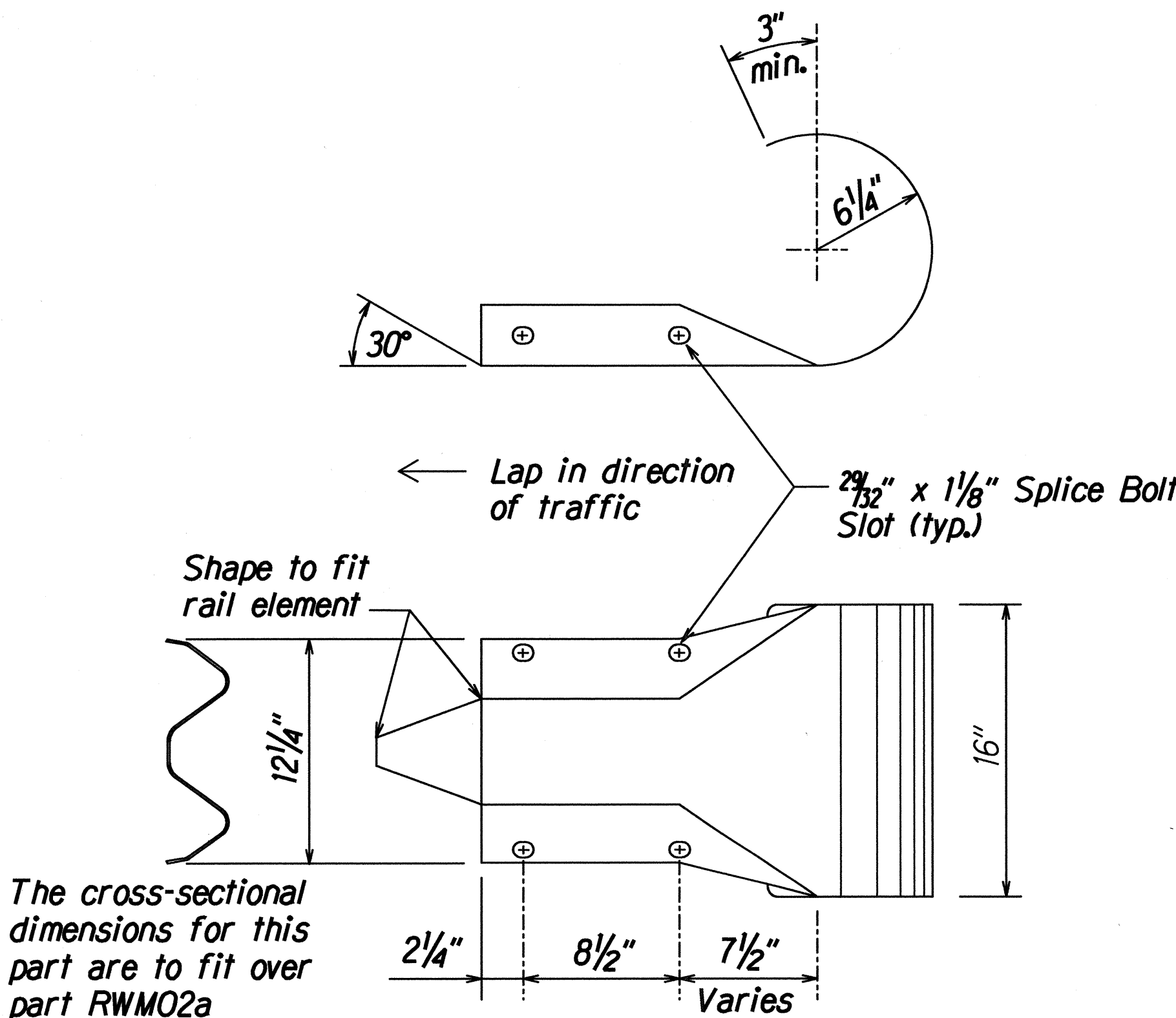
W-BEAM END SECTION (FLARED RWE01a)



The cross-sectional dimensions for this part are to fit over part RWM02a

DESIGNATOR	BASE METAL THICKNESS
RWE06a	12 Gauge

W-BEAM END SECTION (BUFFER RWE06a)



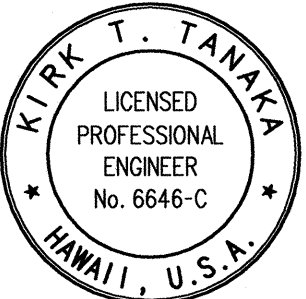
The cross-sectional dimensions for this part are to fit over part RWM02a

DESIGNATOR	BASE METAL THICKNESS
RWE03a	12 Gauge

W-BEAM END SECTION (ROUNDED RWE03a)

DESIGNED BY	DATE
DRAWN BY	
CHECKED BY	
NOTES	
QUANTITIES	
BY	

1/13/2000 1012000 guardrail/terminal design (standard plan TE-51) 02/01/01



THIS WORK WAS PREPARED BY ME OR UNDER MY DIRECT SUPERVISION

J. T. Tanaka 02/13/01

R. T. TANAKA ENGINEERS, INC.

STATE OF HAWAII
DEPARTMENT OF TRANSPORTATION
HIGHWAYS DIVISION

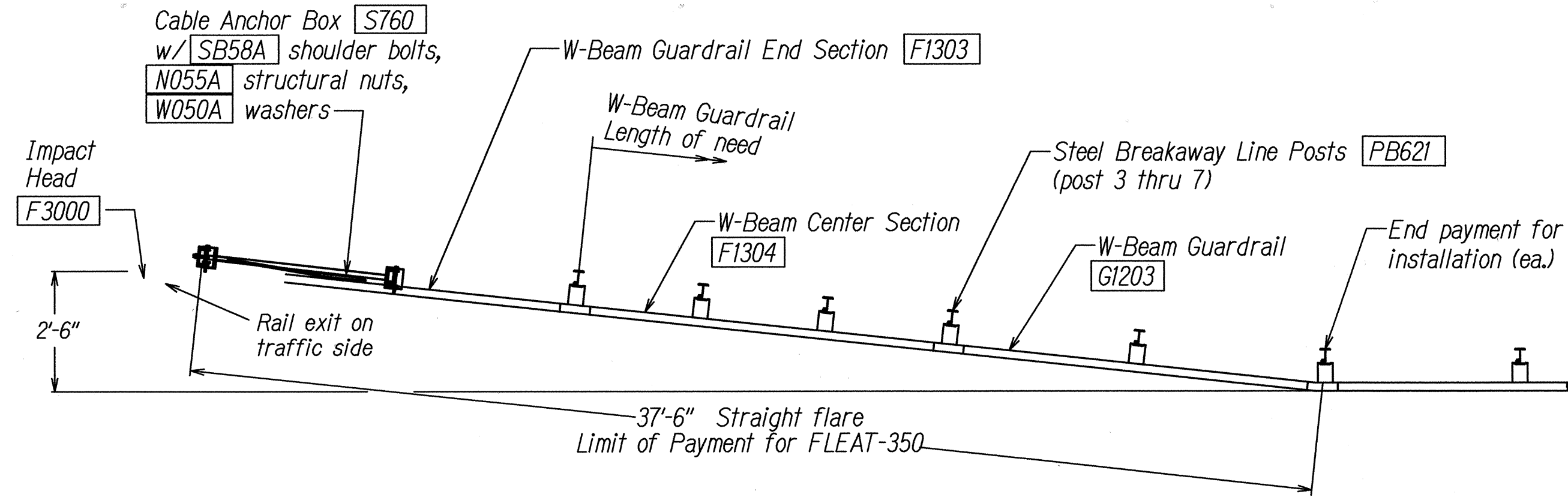
STRONG POST W-BEAM
GUARDRAIL

HANA HIGHWAY
EMERGENCY FEDERAL-AID PROJECT
ROADWAY REPAIRS
AT VARIOUS LOCATIONS
FED. AID PROJ. NO. ER-12(5)

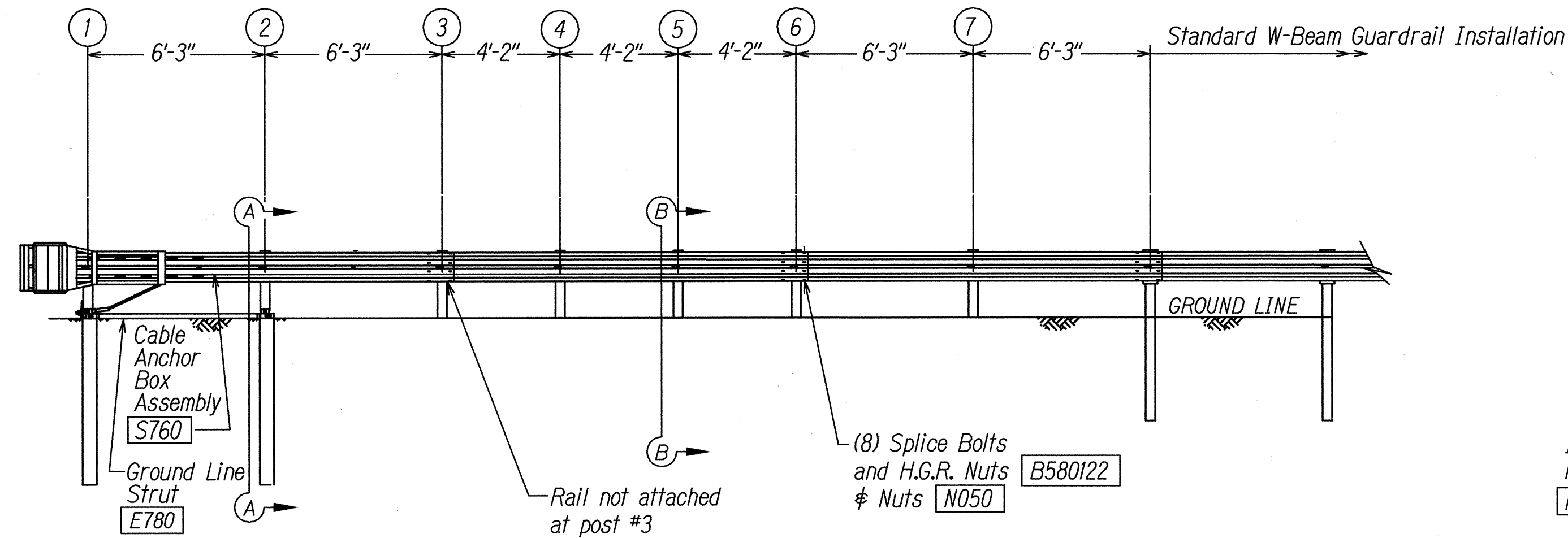
SCALE: AS NOTED

DATE: FEBRUARY 2001

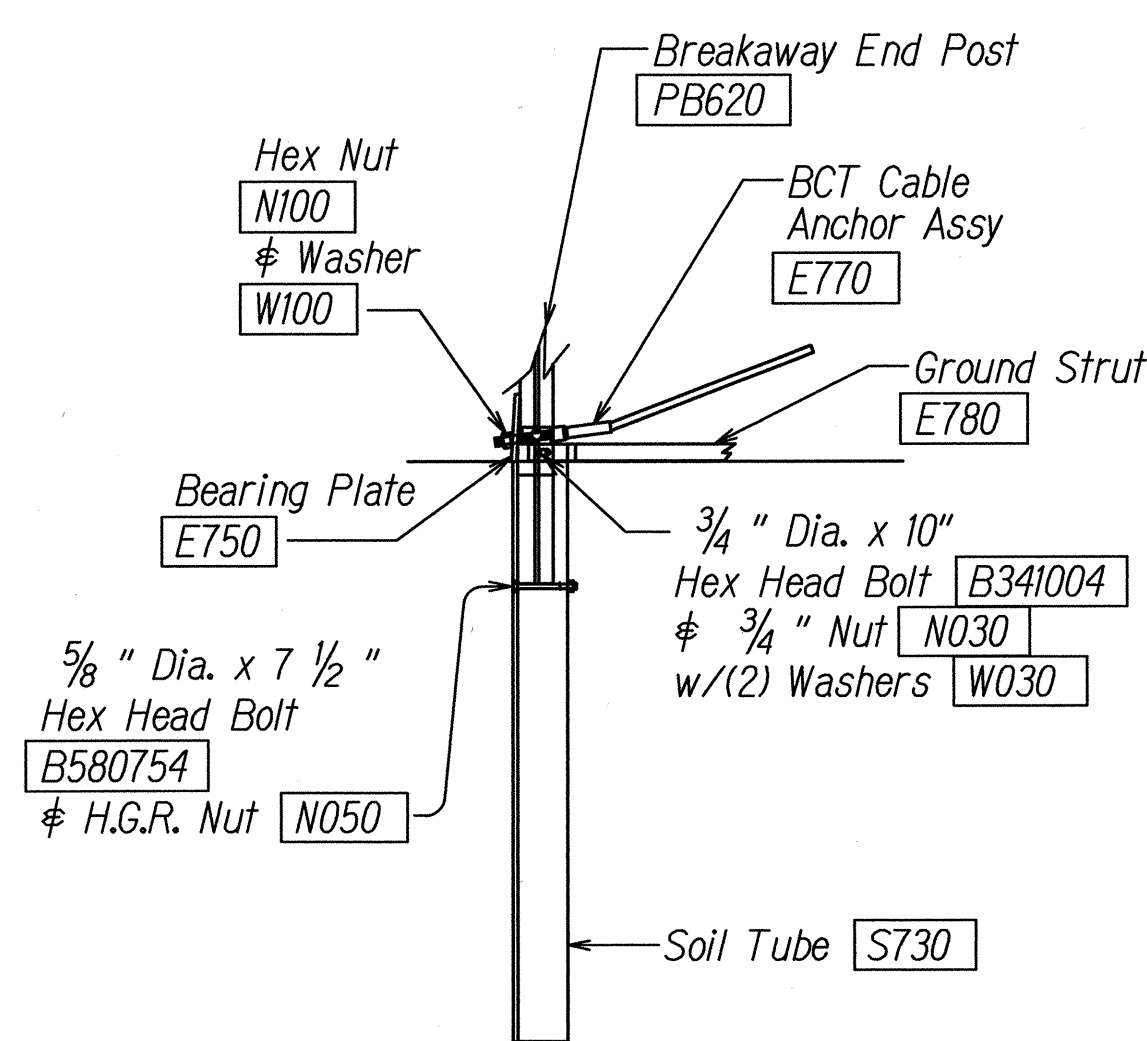
FED. ROAD DIST. NO.	STATE	FEDERAL AID PROJ. NO.	FISCAL YEAR	SHEET NO.	TOTAL SHEETS
HAWAII	HAW.	ER-12(5)	2001	6	26



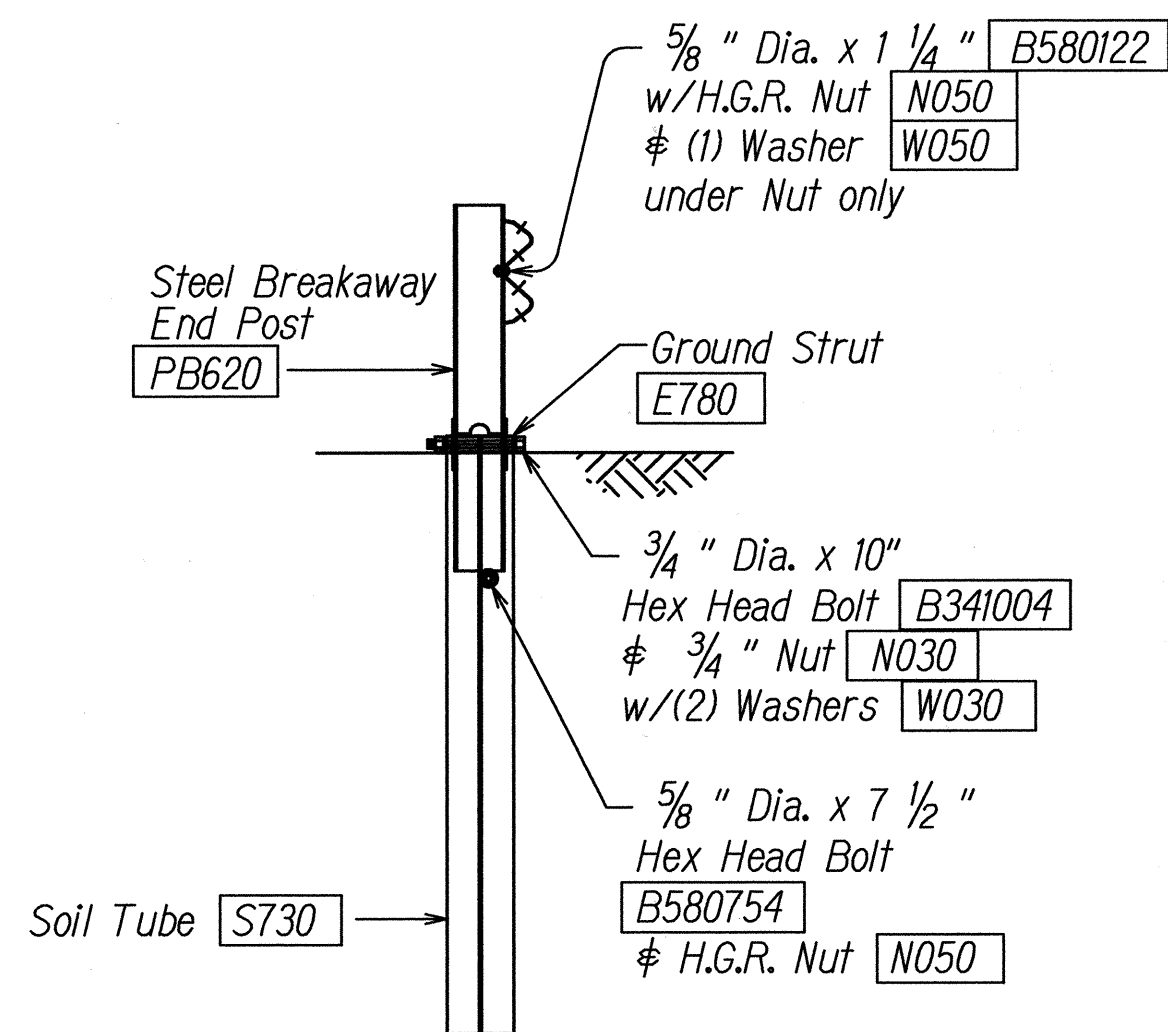
TRAFFIC →
PLAN



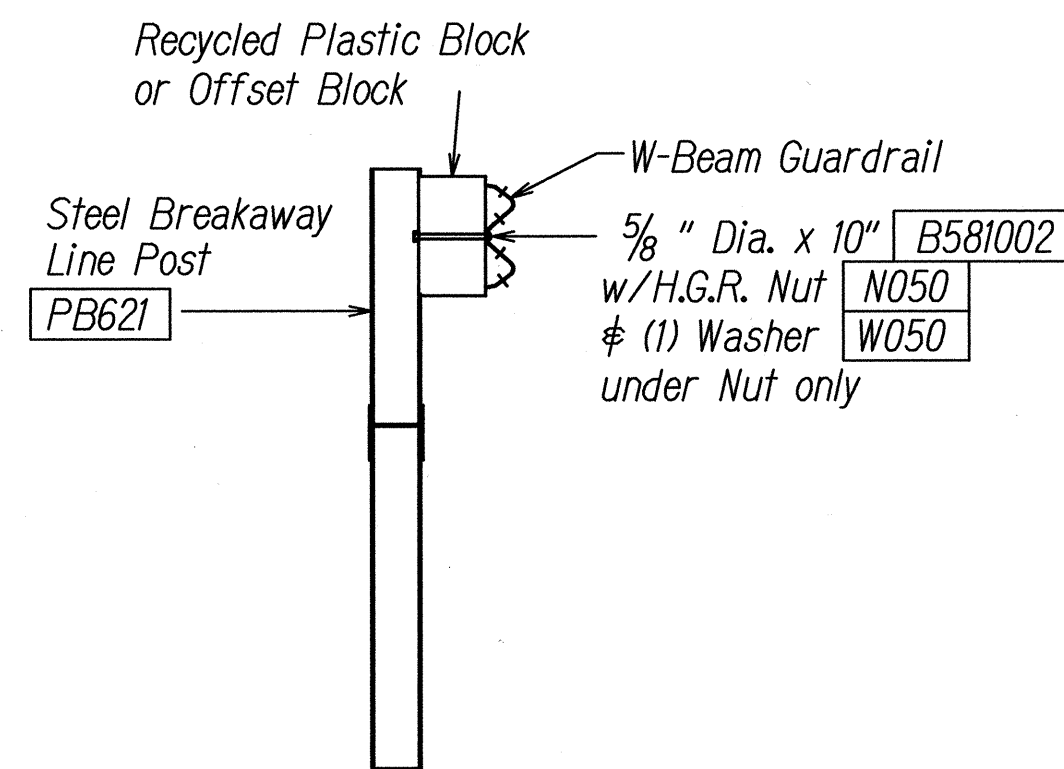
ELEVATION



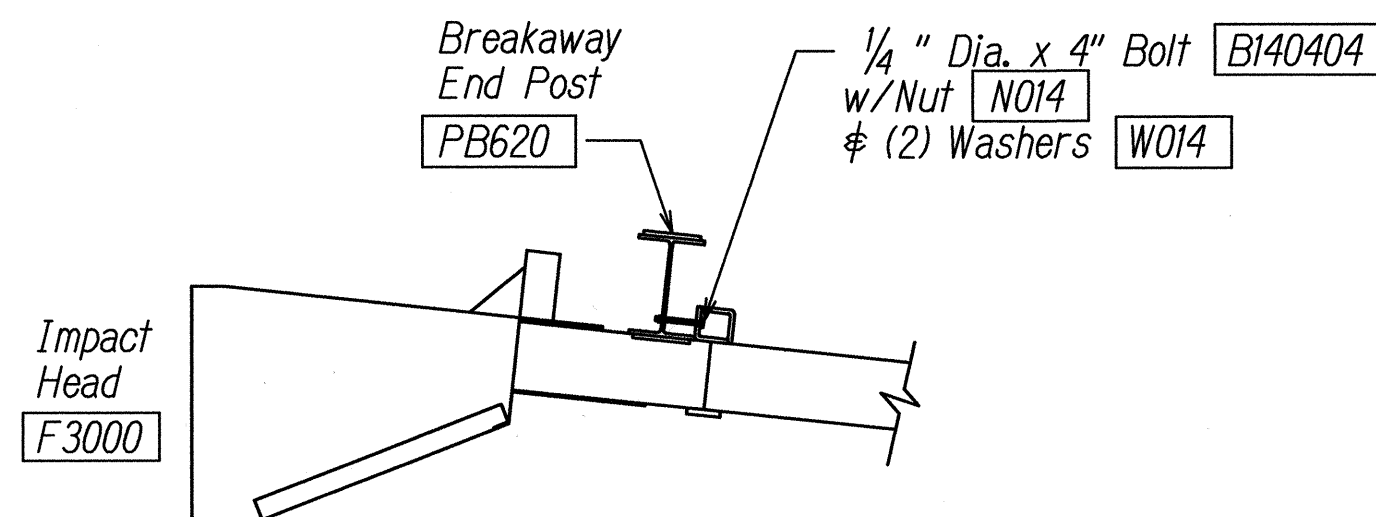
PARTIAL VIEW OF POST 1



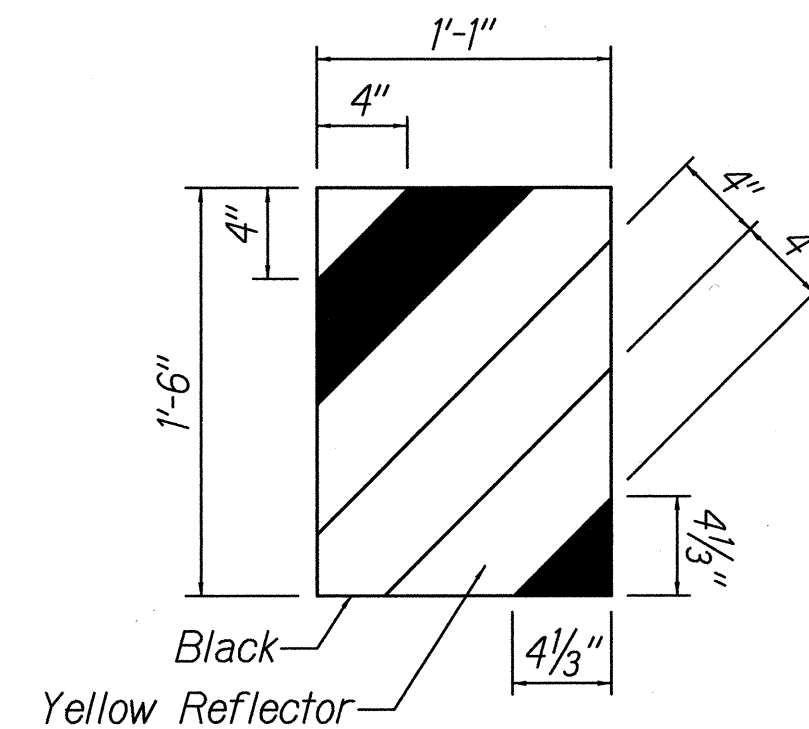
SECTION A-A
(@ Post #2)



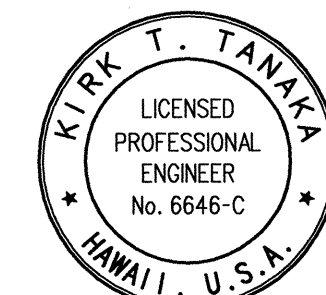
SECTION B-B
(Typical @ Post 3 - 7)
NOTE: RAIL NOT BOLTED @ POST #3



IMPACT HEAD CONNECTING DETAIL



IHRM(R)
IMPACT HEAD REFLECTOR
MARKER INSERT
DETAIL



THIS WORK WAS PREPARED BY ME
OR UNDER MY DIRECT SUPERVISION

J. R. Tanaka 02/12/01
R. T. TANAKA ENGINEERS, INC.

ITEM NO.	QTY.	BILL OF MATERIALS
F3000	1	IMPACT HEAD
F1303	1	W-BEAM GUARDRAIL END SECTION, 12 GA.
F1304	1	W-BEAM GUARDRAIL CENTER SECTION, 12 GA.
G1203	1	W-BEAM GUARDRAIL, 12 GA.
S730	2	*FOUNDATION SOIL TUBE, 6" x 8" x 72"
E750	1	BEARING PLATE
S760	1	CABLE ANCHOR BOX
E770	1	BCT CABLE ANCHOR ASSEMBLY
E780	1	GROUND STRUT
PB620	2	STEEL BREAKAWAY END POST
PB621	5	STEEL BREAKAWAY LINE POST
	5	RECYCLED PLASTIC BLOCKOUT OR OFFSET BLOCK
	1	IMPACT HEAD REFLECTOR MARKER - IHRM(R) OR (L)
HARDWARE		
B580122	25	5/8" Dia. x 1 1/4" SPLICE BOLT, POST #2
B580754	2	5/8" Dia. x 7 1/2" HEX BOLT
B341004	2	3/4" Dia. x 10" HEX BOLT
B581002	5	5/8" Dia. x 10" H.G.R. BOLT (POST 3 THRU 7)
N050	32	5/8" Dia. H.G.R. NUT (SPLICE 24, SOIL TUBES 2, POST 2 THRU 7, 6)
N030	2	3/4" Dia. HEX NUT
W050	6	H.G.R. WASHER
W030	4	3/4" ID WASHER
N100	2	1" ANCHOR CABLE HEX NUT
W100	2	1" ANCHOR CABLE WASHER
B140404	2	1/4" x 4" HEX BOLT
N014	2	1/4" HEX NUT
W014	4	1/4" WASHER
SB58A	8	CABLE ANCHOR BOX SHOULDER BOLT
N055A	8	1/2" A325 STRUCTURAL NUT
W050A	16	1 1/16" OD x 9/16" ID A325 STR. WASHER

Foundation Tube Options For Posts 1 & 2
 *6'-0" Split Foundation Tubes S730
 *6'-0" Solid Foundation Tubes E731
 *5'-0" Foundation Tubes S735 W/Soil Plates SP600
 *4'-6" Foundation Tubes E735 W/Soil Plates SP600

STATE OF HAWAII
DEPARTMENT OF TRANSPORTATION
HIGHWAYS DIVISION

FLEAT-350
FLARED ENERGY ABSORBING TERMINAL

HANA HIGHWAY
EMERGENCY FEDERAL-AID PROJECT
ROADWAY REPAIRS
AT VARIOUS LOCATIONS
FED. AID PROJ. NO. ER-12(5)

SCALE: AS NOTED
DATE: FEBRUARY 2001