

Diagram showing the connection of CG20-2 to the END terminal. The terminal is labeled "END".

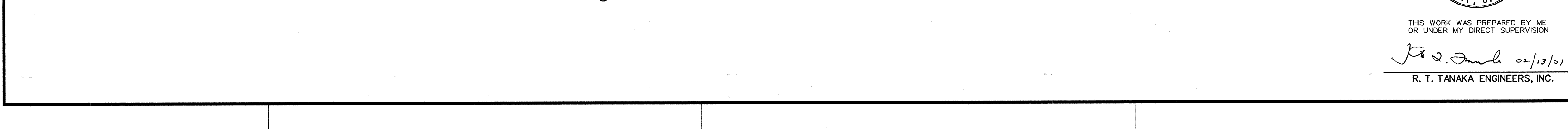


Diagram illustrating the layout of a road construction site, showing the placement of signs and markers relative to a road centerline.

- Signs:**
 - CG20-2 (60" x 48")**: A rectangular sign reading "END CONSTRUCTION".
 - CW20-1d (48" x 48")**: A diamond-shaped sign reading "ROAD CONSTRUCTION AHEAD".
- Markers:** Two circular markers are shown on the road centerline, one positioned between the two signs.
- Dimensions:**
 - A distance of **500'** is indicated between the two circular markers.
 - A distance of **500'** is indicated from the centerline to the "END CONSTRUCTION" sign.
- Orientation:** An arrow labeled **TO KIP** points towards the top of the diagram, indicating the direction of travel.
- Scale:** The scale is given as **SCALE: 1" = 20'**.
- Professional Engineer Seal:** A circular seal for **KIRK T. TANAKA**, Licensed Professional Engineer, No. 6646-C, Hawaii, U.S.A.
- Disclaimer:** THIS WORK WAS PREPARED BY ME OR UNDER MY DIRECT SUPERVISION.

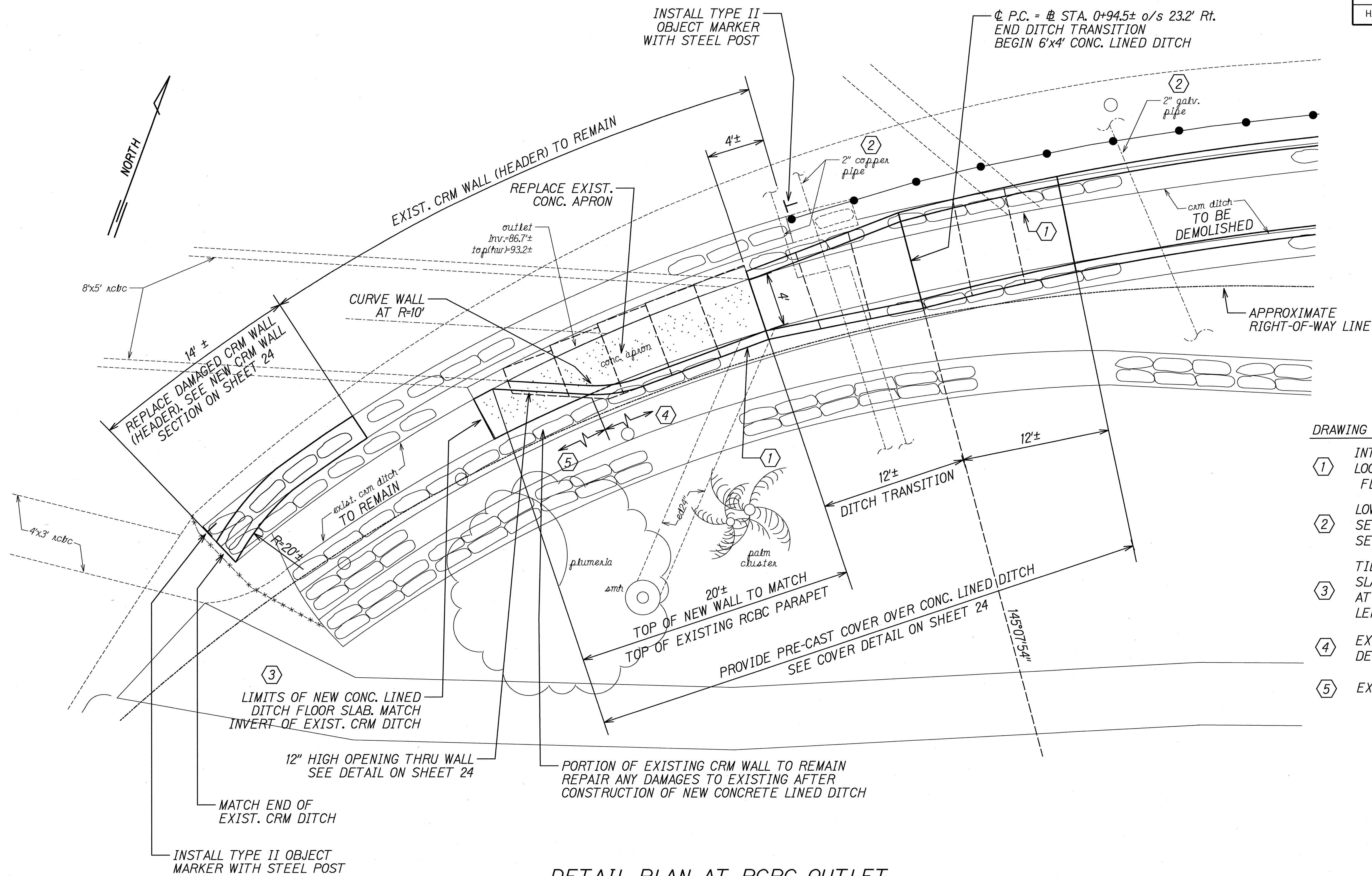
THIS WORK WAS PREPARED BY ME
OR UNDER MY DIRECT SUPERVISION

R. T. Tanaka 02/13/0

R. T. TANAKA ENGINEERS, INC.

SHEET No. 1 OF 4 SHEET

FED. ROAD DIST. NO.	STATE	FEDERAL AID PROJ. NO.	FISCAL YEAR	SHEET NO.	TOTAL SHEETS
HAWAII	HAW.	ER-12(5)	2001	22	26



- DRAWING ANNOTATIONS:
- 1 INTERCEPT EXISTING 24" DRAIN. VERIFY LOCATION IN THE FIELD. CUT PIPE END FLUSHED TO WALL FACE.
 - 2 LOWER AND/OR ABANDON WATER LINES. SEE WATER SYSTEM NOTES ON SHEET 9. SEE CROSSING SECTION ON SHEET 24
 - 3 TIE NEW CONCRETE LINED DITCH FLOOR SLAB TO EXISTING RCBC WITH #4 DOWELS AT 12" O.C. AT 12" MIN. EMBEDMENT. LENGTH OF DOWELS: 36"
 - 4 EXISTING CRM DITCH WALL TO BE DEMOLISHED AND REMOVED.
 - 5 EXISTING CRM DITCH WALL TO REMAIN.

DETAIL PLAN AT RCBC OUTLET
SCALE: 1" = 4'

DESIGNED BY	DATE
CHECKED BY	
NOTED BY	
PLANNED BY	
ORIGINAL	

THIS WORK WAS PREPARED BY ME
OR UNDER MY DIRECT SUPERVISION

J. S. Smith 02/13/01

R. T. TANAKA ENGINEERS, INC.

STATE OF HAWAII
DEPARTMENT OF TRANSPORTATION
HIGHWAYS DIVISION

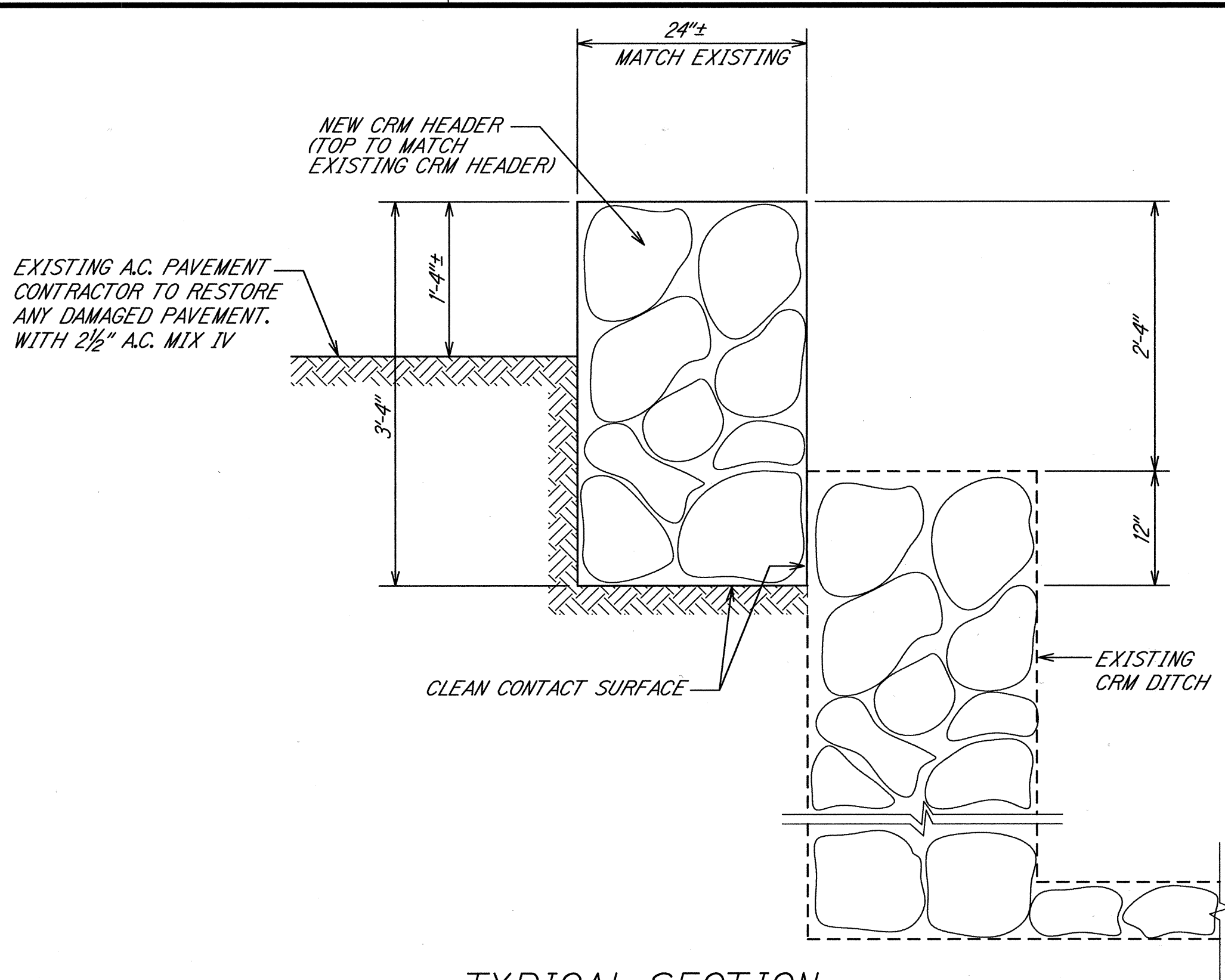
DRAINAGE REPAIRS
AT MILE POST 34.0
(VICINITY OF KEAWA PLACE INTERSECTION)

HANA HIGHWAY
EMERGENCY FEDERAL-AID PROJECT
ROADWAY REPAIRS
AT VARIOUS LOCATIONS
FED. AID PROJ. NO. ER-12(5)

SCALE: AS NOTED

DATE: FEBRUARY 2001

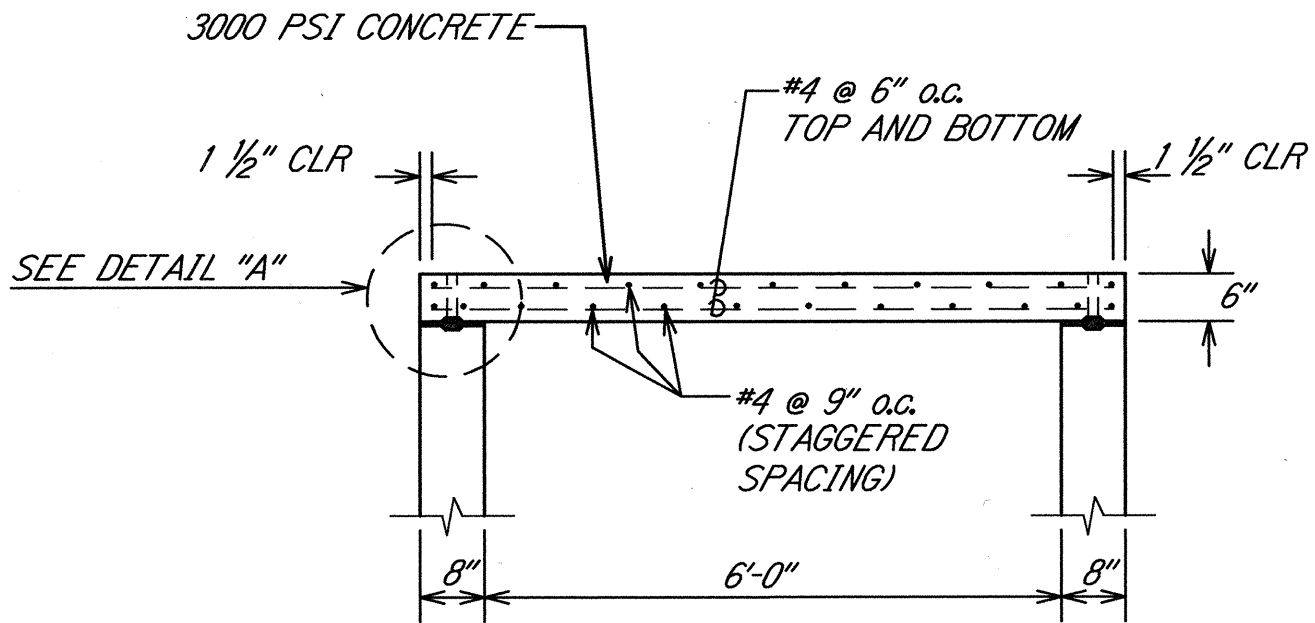
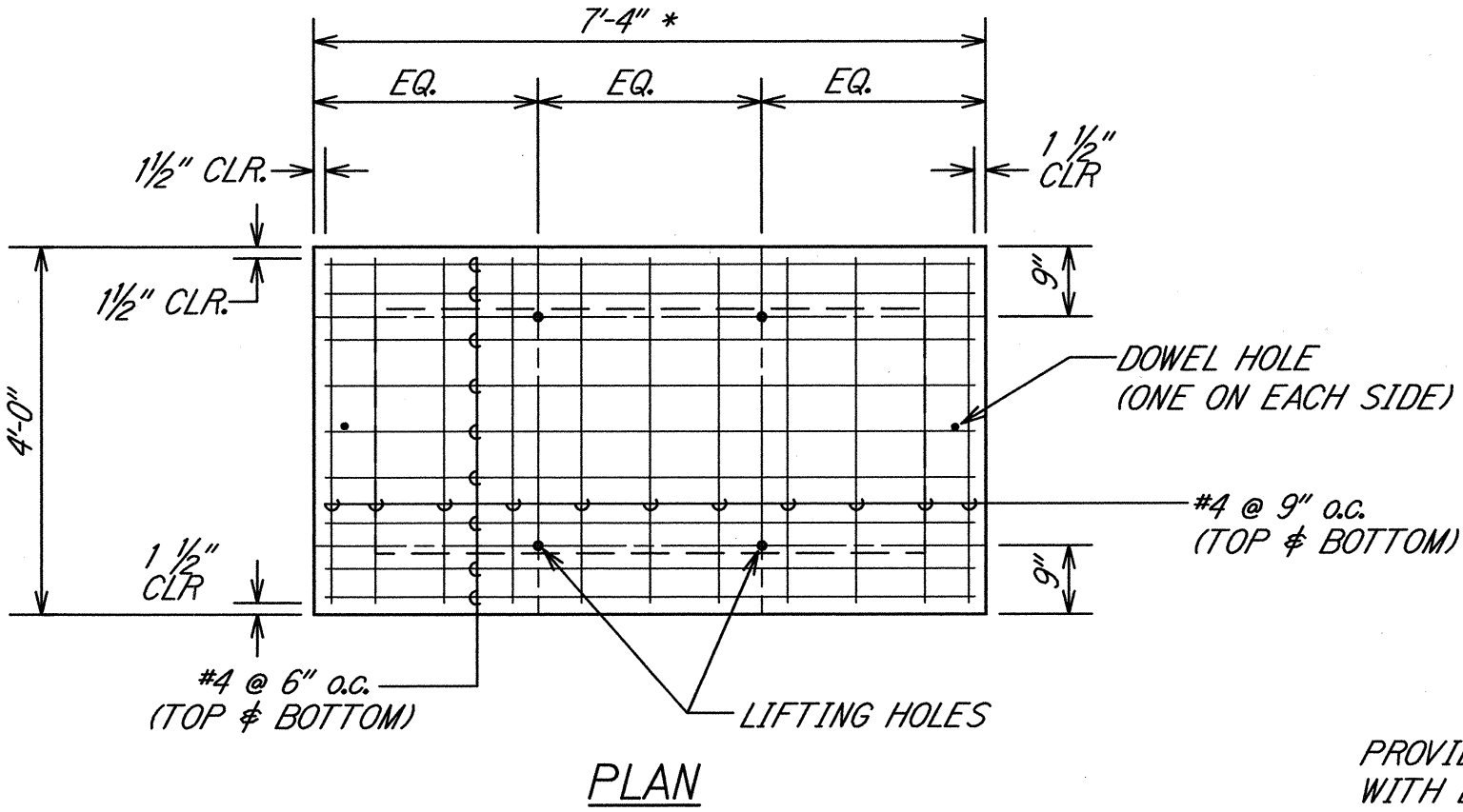
FED. ROAD DIST. NO.	STATE	FEDERAL AID PROJ. NO.	FISCAL YEAR	SHEET NO.	TOTAL SHEETS
HAWAII	HAW.	ER-12(5)	2001	24	26



TYPICAL SECTION
RESTORATION OF CRM WALL(HEADER)
 (VICINITY OF BASELINE KEAWA PLACE STA. 0+45* RT.)

* AT TRANSITION: VARIES FROM 5'-4" TO 7'-4"
 AT RCBC OUTLET: VARIES FROM 2'-0" TO 5'-4"
 VERIFY DIMENSIONS AND LAYOUT OF COVER
 PRIOR TO PRECASTING.

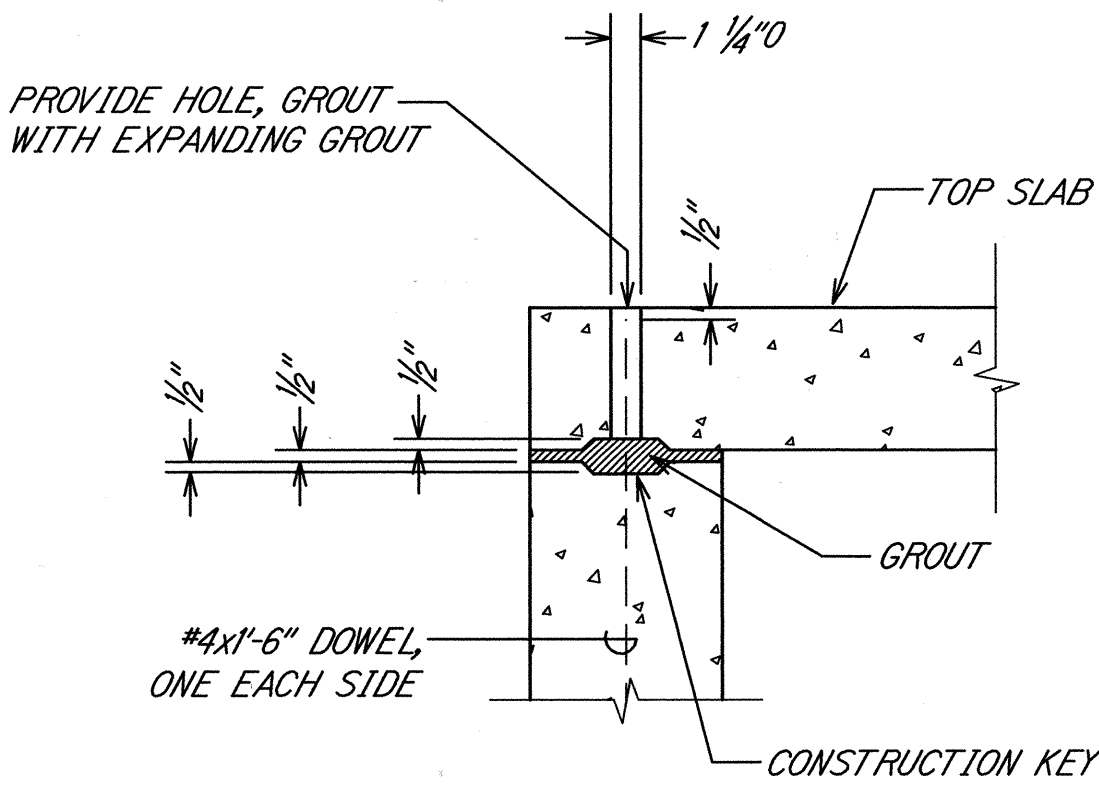
SCALE: 1" = 1'



SECTION

PRE-CAST CONCRETE COVER

SCALE: 1" = 2'

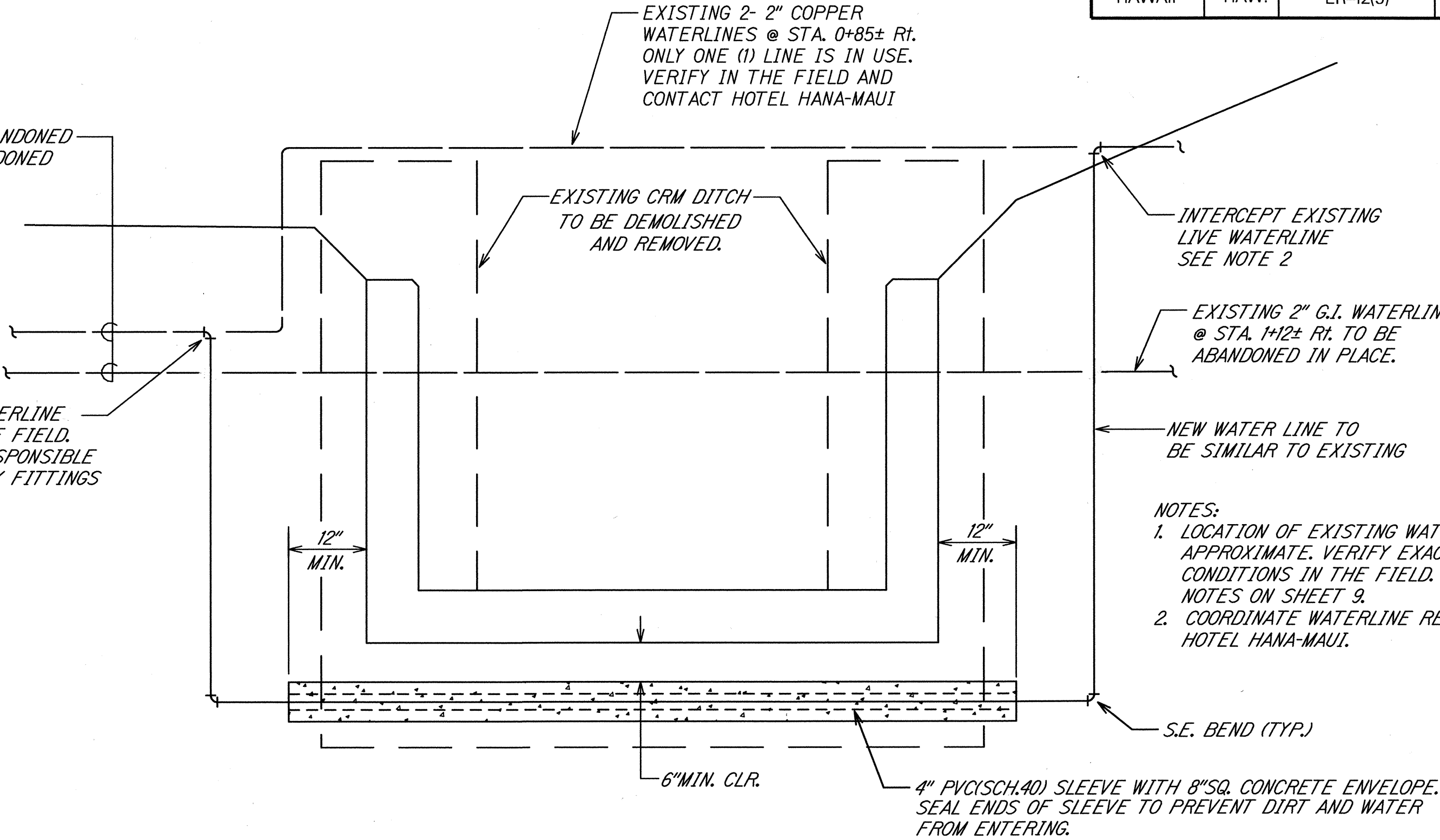


DETAIL "A"

SCALE: 1 1/2" = 1'

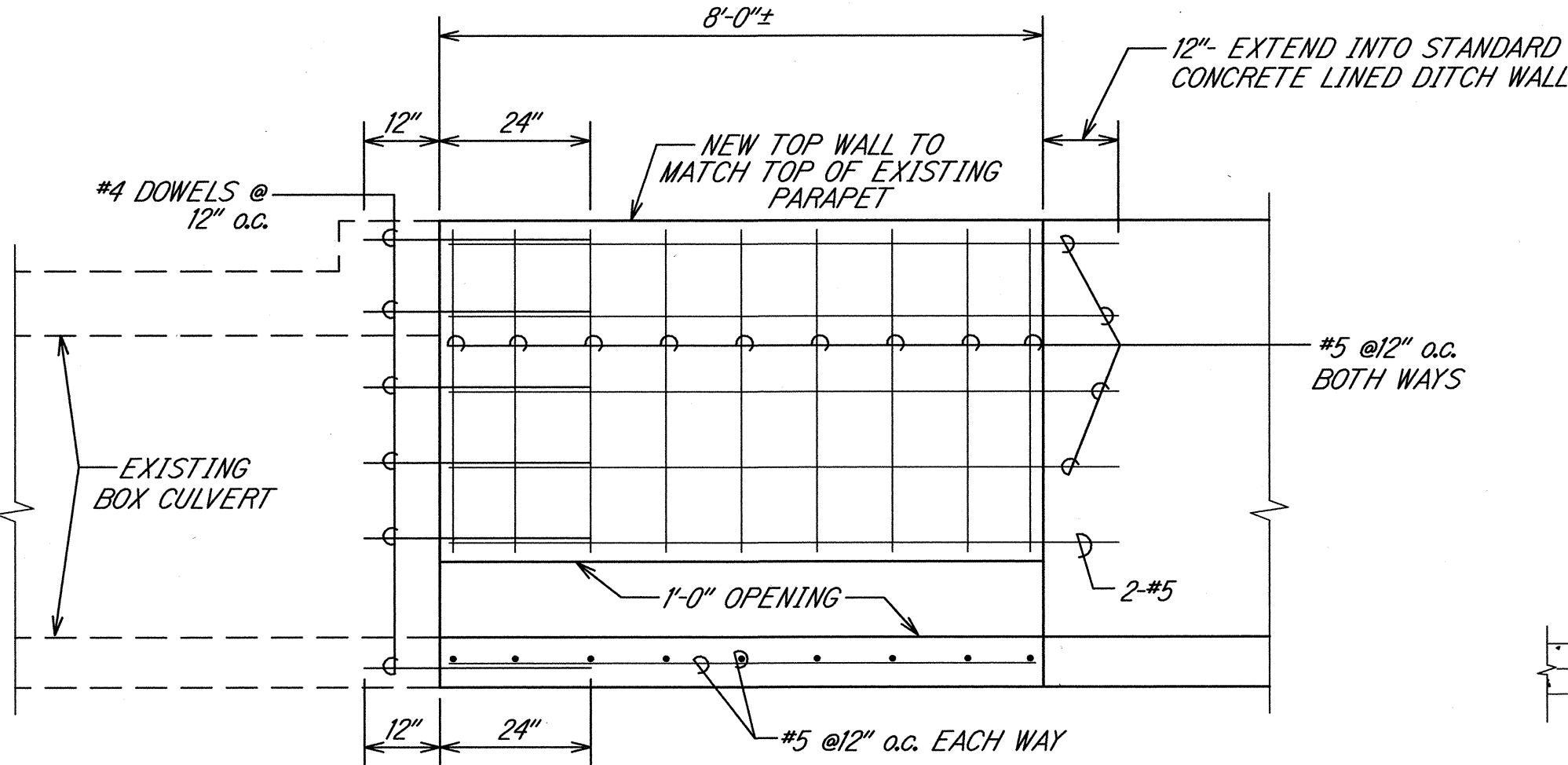
"DEAD" WATERLINES TO BE ABANDONED
 IN PLACE. PLUG ENDS OF ABANDONED
 WATERLINES.

INTERCEPT EXISTING LIVE WATERLINE
 VERIFY EXACT LOCATION IN THE FIELD.
 THE CONTRACTOR SHALL BE RESPONSIBLE
 FOR PROVIDING THE NECESSARY FITTINGS
 FOR THE CONNECTION.



TYPICAL SECTION OF CONCRETE LINED DITCH
AT WATERLINE CROSSINGS

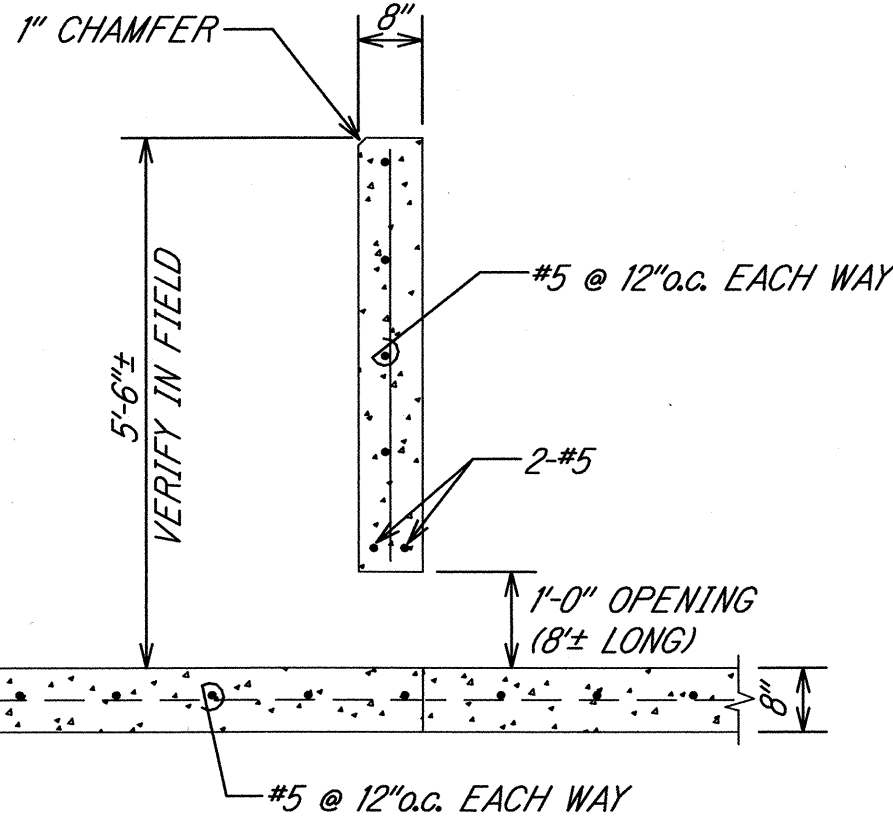
SCALE: 3/4" = 1'



ELEVATION

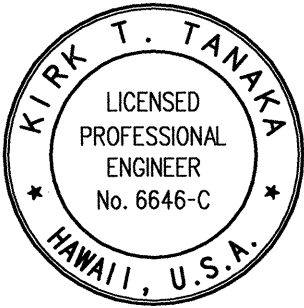
NEW CONCRETE LINED DITCH WALL WITH OPENING

SCALE: 1" = 2'



SECTION

DATE	DESIGNED BY	CHECKED BY
	DESIGNED BY	CHECKED BY
	DESIGNED BY	CHECKED BY
	DESIGNED BY	CHECKED BY
	DESIGNED BY	CHECKED BY
	DESIGNED BY	CHECKED BY
	DESIGNED BY	CHECKED BY
	DESIGNED BY	CHECKED BY
	DESIGNED BY	CHECKED BY
	DESIGNED BY	CHECKED BY



THIS WORK WAS PREPARED BY ME
 OR UNDER MY DIRECT SUPERVISION
 R. T. TANAKA ENGINEERS, INC.

STATE OF HAWAII
DEPARTMENT OF TRANSPORTATION
HIGHWAYS DIVISION
DRAINAGE REPAIRS
AT MILE POST 34.0
(VICINITY OF KEAWA PLACE INTERSECTION)
HANA HIGHWAY
EMERGENCY FEDERAL-AID PROJECT
ROADWAY REPAIRS
AT VARIOUS LOCATIONS
FED. AID PROJ. NO. ER-12(5)
SCALE: AS NOTED
DATE: FEBRUARY 2001

SHEET No. 4 OF 4 SHEET
24