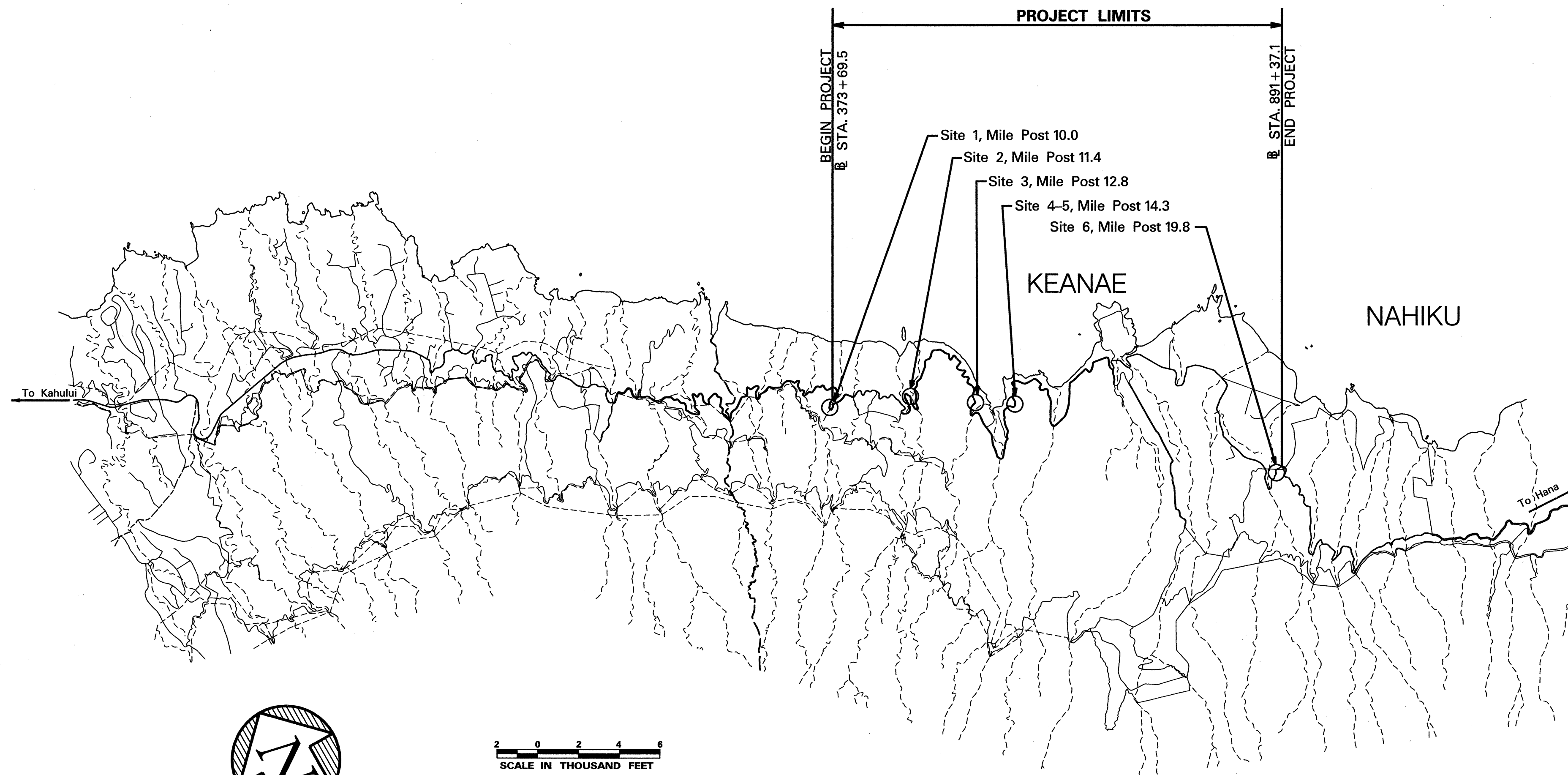
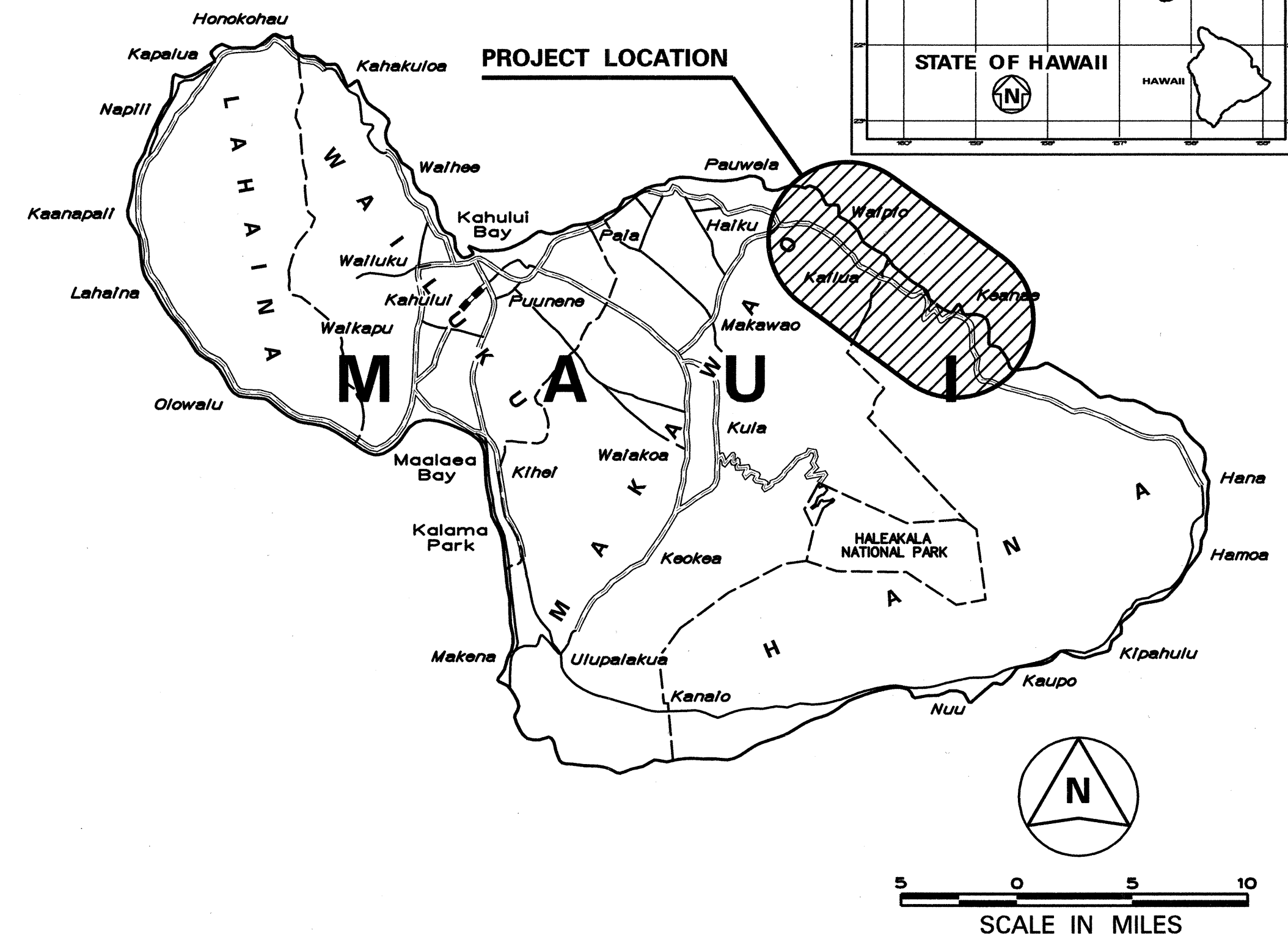
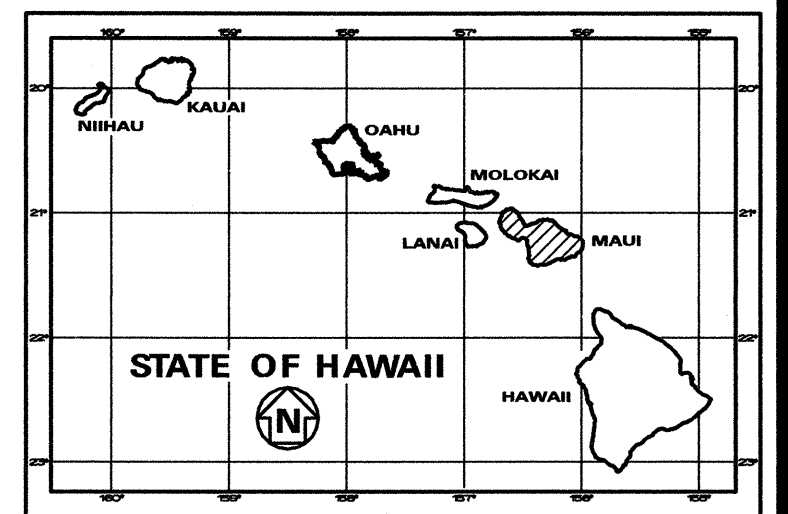


INDEX TO DRAWINGS	
SHEET NO.	DESCRIPTION
1	TITLE SHEET
2	STANDARD PLAN SUMMARY
3	GENERAL NOTES AND LEGEND
4	MISCELLANEOUS NOTES
5-6	NPDES POLLUTANT CONTROL NOTES
7-10	ROADWAY PLANS WITH GUARDRAIL IMPROVEMENTS
11-18	STRUCTURAL GUARDRAIL IMPROVEMENT PLANS
19	ROADWAY PLAN WITH DRAINAGE IMPROVEMENTS
20-25	TRAFFIC CONTROL PLANS
26-30	FINAL STRIPING PLANS
31-36	GUARDRAIL DETAILS
37	MISCELLANEOUS DETAILS
38-42	BORING LOGS

STATE OF HAWAII  
DEPARTMENT OF TRANSPORTATION  
HIGHWAYS DIVISION  
HONOLULU, HAWAII  
"AS-BUILT"  
PLANS FOR  
**HANA HIGHWAY REPAIRS  
AND MAINTENANCE**  
AT VARIOUS LOCATIONS, PHASE-1  
**PROJECT NO. 360AB-01-00M**  
DISTRICTS OF MAKAWAO AND HANA  
ISLAND OF MAUI

FED. ROAD DIST. NO.	STATE	PROJ. NO.	FISCAL YEAR	SHEET NO.	TOTAL SHEETS
HAWAII	HAW.	360AB-01-00M	2001	1	42



----- FEDERAL AID PROJECTS PREVIOUSLY CONSTRUCTED OR UNDER CONSTRUCTION

MILE POST 10.0 TO MILE POST 19.8

ORIGINAL PLAN	SURVEY PLOTTED BY	DATE
NOTE BOOK	DRAWN BY	
	DESIGNED BY	
	CHECKED BY	

DMT Consulting Engineers  
DESIGNED BY S. Urada  
P.S. & E. BY  
692-7553  
PHONE  
June, 2001  
DATE

CHANGES MADE DURING CONSTRUCTION HAVE BEEN INCORPORATED ON THESE PLANS EXCEPT CHANGES IN THE ORIGINAL THEORETICAL QUANTITIES. FOR ACTUAL QUANTITIES, REFER TO PROJECT LOGS.  
DATE 06/26/03  
RESIDENT ENGINEER

DEPARTMENT OF TRANSPORTATION STATE OF HAWAII	
APPROVED:	
FOR DIR. OF TRANSPORTATION	DATE