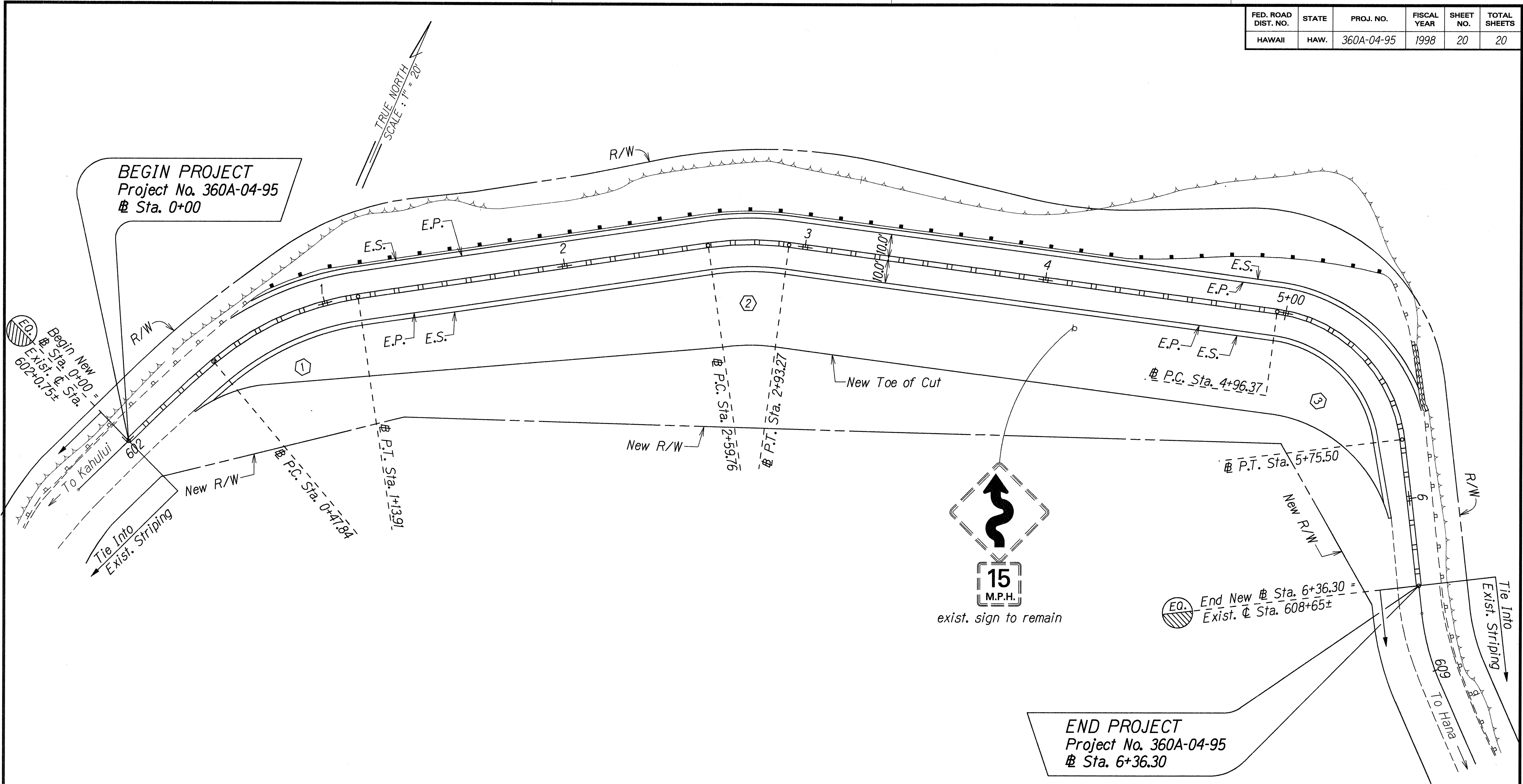


FED. ROAD DIST. NO.	STATE	PROJ. NO.	FISCAL YEAR	SHEET NO.	TOTAL SHEETS
HAWAII	HAW.	360A-04-95	1998	20	20



END PROJECT
Project No. 360A-04-95
Sta. 6+36.30

# CURVE DATA			
	①	②	③
Δ	31°33'10"	16°00'00"	75°34'22"
R	120.00'	120.00'	60.00'
T	33.90'	16.86'	46.52'
Lc	66.07'	33.51'	79.14'
C	65.25'	33.40'	73.53'

LEGEND

4" Double Solid Yellow Pavement Striping (Paint)
w/Type "D" Raised Pavement Markers @ 20' o.c.

STATE OF HAWAII
DEPARTMENT OF TRANSPORTATION
HIGHWAYS DIVISION

TRAFFIC STRIPING PLAN

HANA HIGHWAY
IMPROVEMENTS AT M.P. 14.39
Project No. 360A-04-95
Scale: 1"=20.0' Date: June 1998
SHEET No. 1 OF 1 SHEETS

ORIGINAL PLAN	DATE
SURVEY PLOTTED BY	3/17/98
DRAWN BY	J. Mitsunishi, MH
NOTES	dd3/mne
QUANTITIES BY	6-3-98
CHECKED BY	