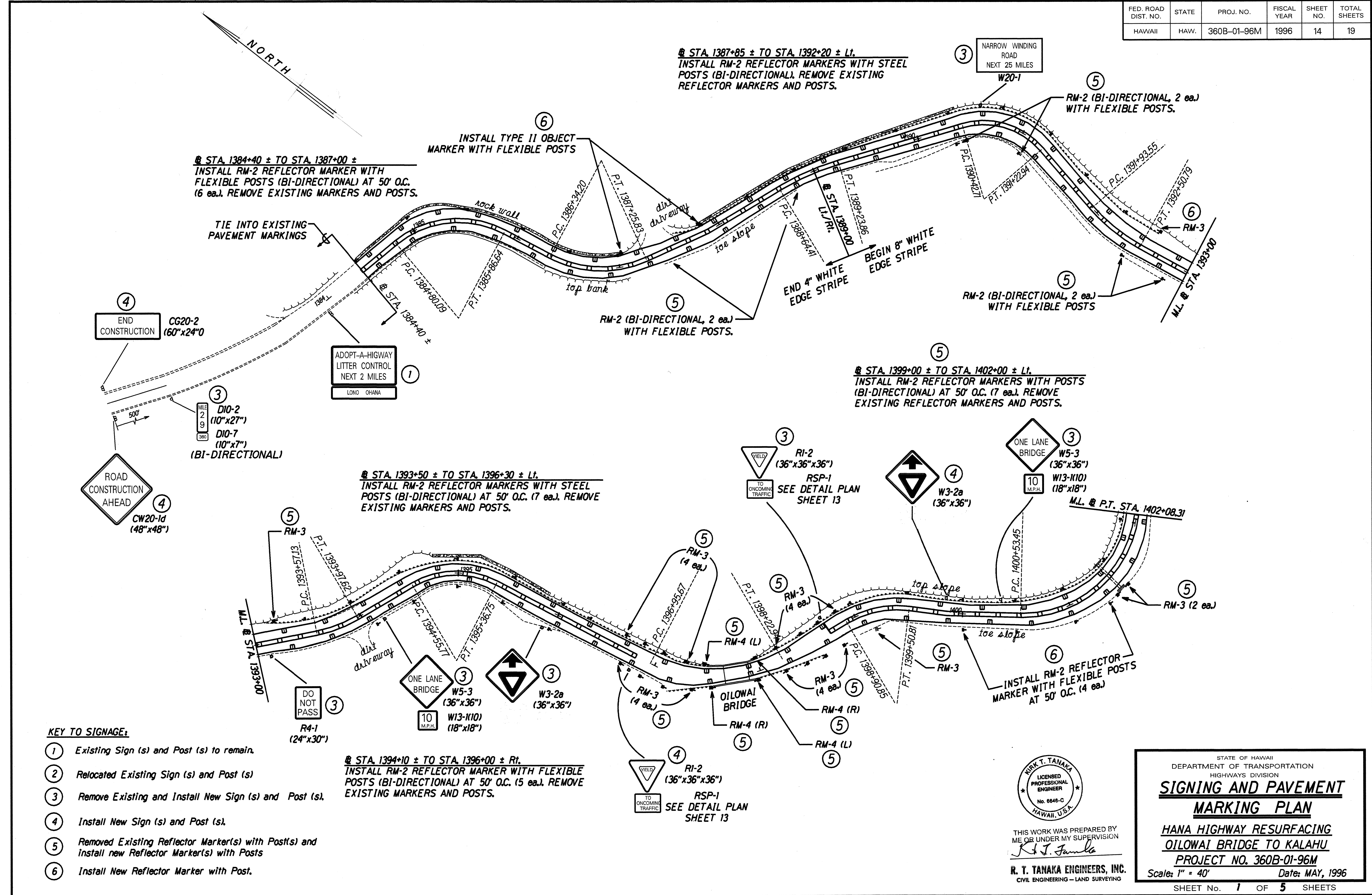


FED. ROAD DIST. NO.	STATE	PROJ. NO.	FISCAL YEAR	SHEET NO.	TOTAL SHEETS
HAWAII	HAW.	360B-01-96M	1996	14	19



⑥ STA. 1384+40 ± TO STA. 1387+00 ±
 INSTALL RM-2 REFLECTOR MARKER WITH FLEXIBLE POSTS (BI-DIRECTIONAL) AT 50' O.C. (6 ea.). REMOVE EXISTING MARKERS AND POSTS.

③ STA. 1387+85 ± TO STA. 1392+20 ± Lt.
 INSTALL RM-2 REFLECTOR MARKERS WITH STEEL POSTS (BI-DIRECTIONAL). REMOVE EXISTING REFLECTOR MARKERS AND POSTS.

⑥ INSTALL TYPE II OBJECT MARKER WITH FLEXIBLE POSTS

TIE INTO EXISTING PAVEMENT MARKINGS

④ END CONSTRUCTION CG20-2 (60"x24"0)

ADOPT-A-HIGHWAY LITTER CONTROL NEXT 2 MILES LONO OHANA

③ MILE 2 9 D10-2 (10"x27") D10-7 (10"x7") (BI-DIRECTIONAL)

ROAD CONSTRUCTION AHEAD CW20-1d (48"x48")

⑥ STA. 1393+50 ± TO STA. 1396+30 ± Lt.
 INSTALL RM-2 REFLECTOR MARKERS WITH STEEL POSTS (BI-DIRECTIONAL) AT 50' O.C. (7 ea.). REMOVE EXISTING MARKERS AND POSTS.

⑤ STA. 1399+00 ± TO STA. 1402+00 ± Lt.
 INSTALL RM-2 REFLECTOR MARKERS WITH POSTS (BI-DIRECTIONAL) AT 50' O.C. (7 ea.). REMOVE EXISTING REFLECTOR MARKERS AND POSTS.

DO NOT PASS R4-1 (24"x30")

ONE LANE BRIDGE W5-3 (36"x36") W13-1(10) (18"x18")

W3-2a (36"x36")

⑥ STA. 1394+10 ± TO STA. 1396+00 ± Rt.
 INSTALL RM-2 REFLECTOR MARKER WITH FLEXIBLE POSTS (BI-DIRECTIONAL) AT 50' O.C. (5 ea.). REMOVE EXISTING MARKERS AND POSTS.

R1-2 (36"x36"x36") RSP-1 SEE DETAIL PLAN SHEET 13

INSTALL RM-2 REFLECTOR MARKER WITH FLEXIBLE POSTS AT 50' O.C. (4 ea.)

- KEY TO SIGNAGE:**
- ① Existing Sign (s) and Post (s) to remain.
 - ② Relocated Existing Sign (s) and Post (s)
 - ③ Remove Existing and Install New Sign (s) and Post (s).
 - ④ Install New Sign (s) and Post (s).
 - ⑤ Removed Existing Reflector Marker(s) with Post(s) and install new Reflector Marker(s) with Posts
 - ⑥ Install New Reflector Marker with Post.

DATE
SURVEY PLOTTED BY
DRAWN BY	H.C.P.
TRACED BY	R.A.H.
DESIGNED BY
CHECKED BY
ORIGINAL PLAN
NOTE BOOK
NO.



THIS WORK WAS PREPARED BY ME OR UNDER MY SUPERVISION
R. T. Tanaka
 R. T. TANAKA ENGINEERS, INC.
 CIVIL ENGINEERING - LAND SURVEYING

STATE OF HAWAII
 DEPARTMENT OF TRANSPORTATION
 HIGHWAYS DIVISION
SIGNING AND PAVEMENT MARKING PLAN
 HANA HIGHWAY RESURFACING
 OILOWAI BRIDGE TO KALAHU
 PROJECT NO. 360B-01-96M
 Scale: 1" = 40' Date: MAY, 1996
 SHEET No. 1 OF 5 SHEETS

FED. ROAD DIST. NO.	STATE	PROJ. NO.	FISCAL YEAR	SHEET NO.	TOTAL SHEETS
HAWAII	HAW.	360B-01-96M	1996	15	19

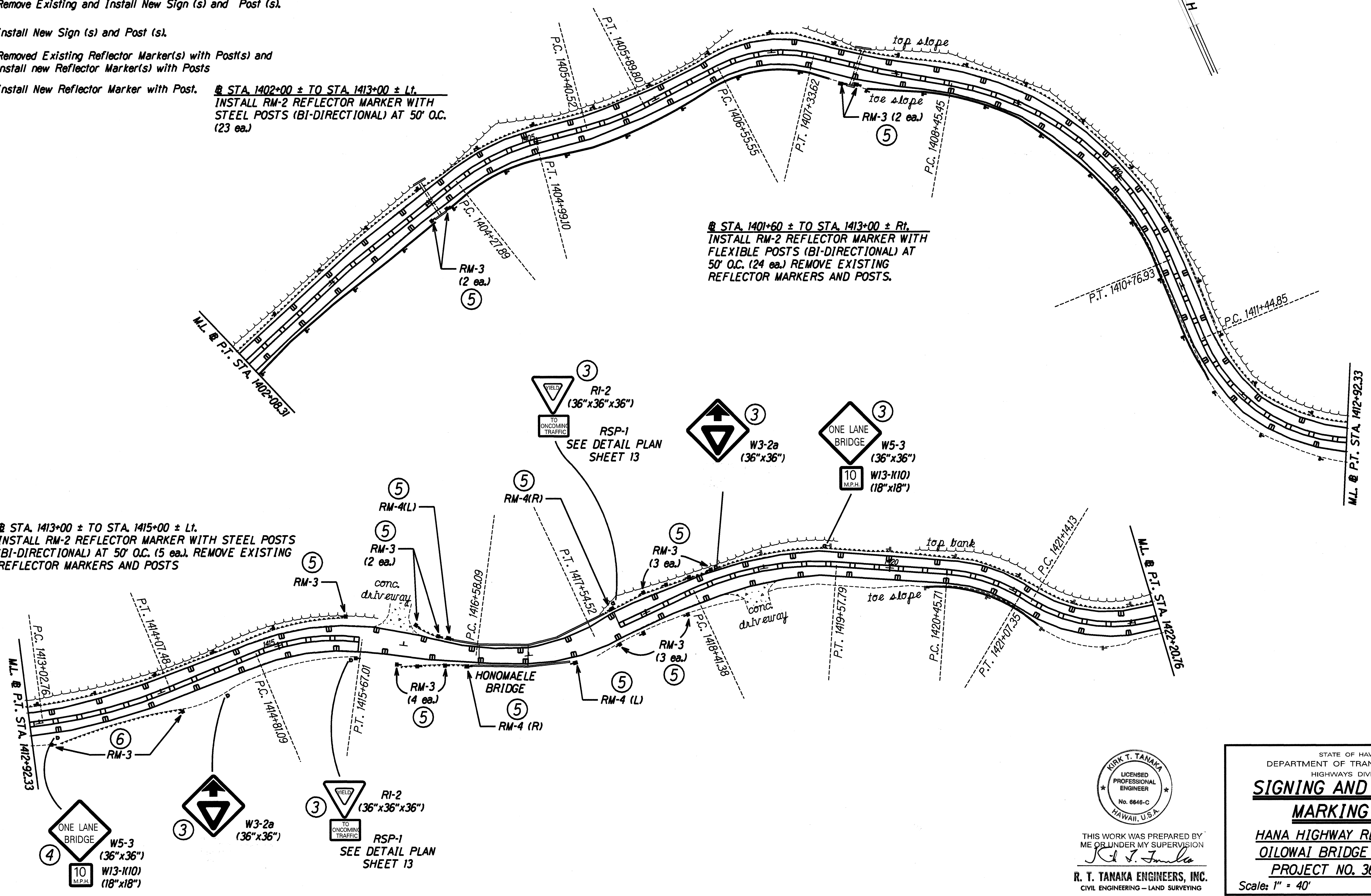
KEY TO SIGNAGE:

- ① Existing Sign (s) and Post (s) to remain.
- ② Relocated Existing Sign (s) and Post (s)
- ③ Remove Existing and Install New Sign (s) and Post (s).
- ④ Install New Sign (s) and Post (s).
- ⑤ Removed Existing Reflector Marker(s) with Post(s) and install new Reflector Marker(s) with Posts
- ⑥ Install New Reflector Marker with Post.

@ STA. 1402+00 ± TO STA. 1413+00 ± Lt.
 INSTALL RM-2 REFLECTOR MARKER WITH STEEL POSTS (BI-DIRECTIONAL) AT 50' O.C. (23 ea.)

@ STA. 1401+60 ± TO STA. 1413+00 ± Rt.
 INSTALL RM-2 REFLECTOR MARKER WITH FLEXIBLE POSTS (BI-DIRECTIONAL) AT 50' O.C. (24 ea.) REMOVE EXISTING REFLECTOR MARKERS AND POSTS.

@ STA. 1413+00 ± TO STA. 1415+00 ± Lt.
 INSTALL RM-2 REFLECTOR MARKER WITH STEEL POSTS (BI-DIRECTIONAL) AT 50' O.C. (5 ea.). REMOVE EXISTING REFLECTOR MARKERS AND POSTS



DATE
REVISION
DESIGNED BY	R.A.H.
CHECKED BY
QUANTITY BY
CONCRETE BY
ORIGINAL PLAN
NOTE BOOK
NO.

KIRK T. TANAKA
 LICENSED PROFESSIONAL ENGINEER
 No. 6646-C
 HAWAII, U.S.A.

THIS WORK WAS PREPARED BY ME OR UNDER MY SUPERVISION
R. T. Tanaka
 R. T. TANAKA ENGINEERS, INC.
 CIVIL ENGINEERING - LAND SURVEYING

STATE OF HAWAII
 DEPARTMENT OF TRANSPORTATION
 HIGHWAYS DIVISION

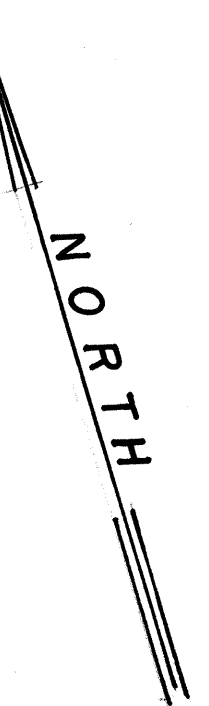
SIGNING AND PAVEMENT MARKING PLAN

HANA HIGHWAY RESURFACING
 OILOWAI BRIDGE TO KALAHU
 PROJECT NO. 360B-01-96M

Scale: 1" = 40' Date: MAY, 1996

SHEET No. 2 OF 5 SHEETS

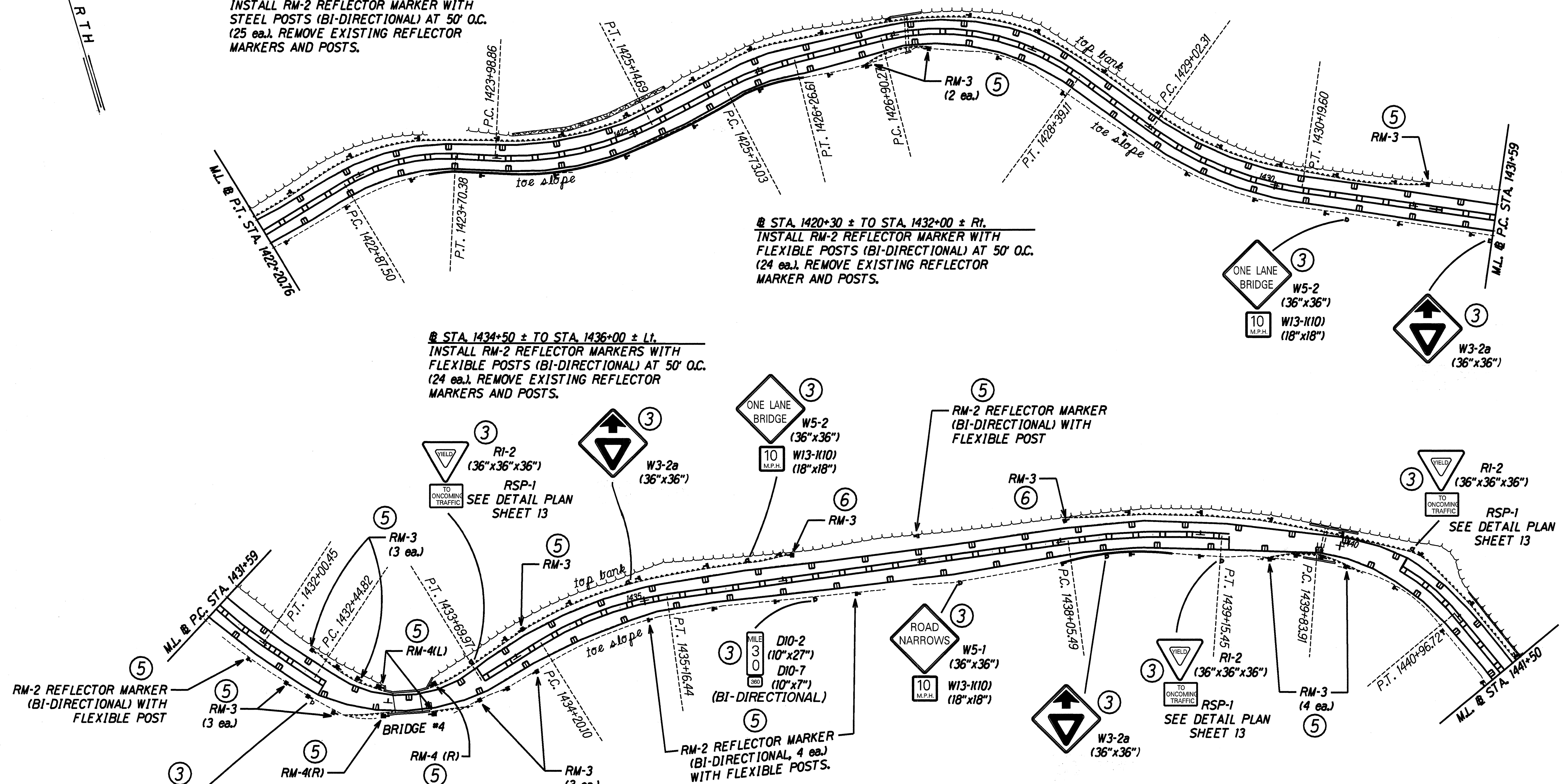
FED. ROAD DIST. NO.	STATE	PROJ. NO.	FISCAL YEAR	SHEET NO.	TOTAL SHEETS
HAWAII	HAW.	360B-01-96M	1996	16	19



@ STA. 1419+00 ± TO STA. 1430+85 ± Lt.
 INSTALL RM-2 REFLECTOR MARKER WITH STEEL POSTS (BI-DIRECTIONAL) AT 50' O.C. (25 ea.). REMOVE EXISTING REFLECTOR MARKERS AND POSTS.

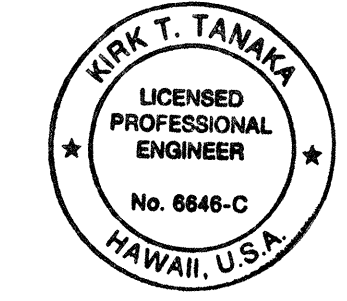
@ STA. 1420+30 ± TO STA. 1432+00 ± Rt.
 INSTALL RM-2 REFLECTOR MARKER WITH FLEXIBLE POSTS (BI-DIRECTIONAL) AT 50' O.C. (24 ea.). REMOVE EXISTING REFLECTOR MARKER AND POSTS.

@ STA. 1434+50 ± TO STA. 1436+00 ± Lt.
 INSTALL RM-2 REFLECTOR MARKERS WITH FLEXIBLE POSTS (BI-DIRECTIONAL) AT 50' O.C. (24 ea.). REMOVE EXISTING REFLECTOR MARKERS AND POSTS.



- KEY TO SIGNAGE:**
- ① Existing Sign (s) and Post (s) to remain.
 - ② Relocated Existing Sign (s) and Post (s)
 - ③ Remove Existing and Install New Sign (s) and Post (s).
 - ④ Install New Sign (s) and Post (s).
 - ⑤ Removed Existing Reflector Marker(s) with Post(s) and install new Reflector Marker(s) with Posts
 - ⑥ Install New Reflector Marker with Post.

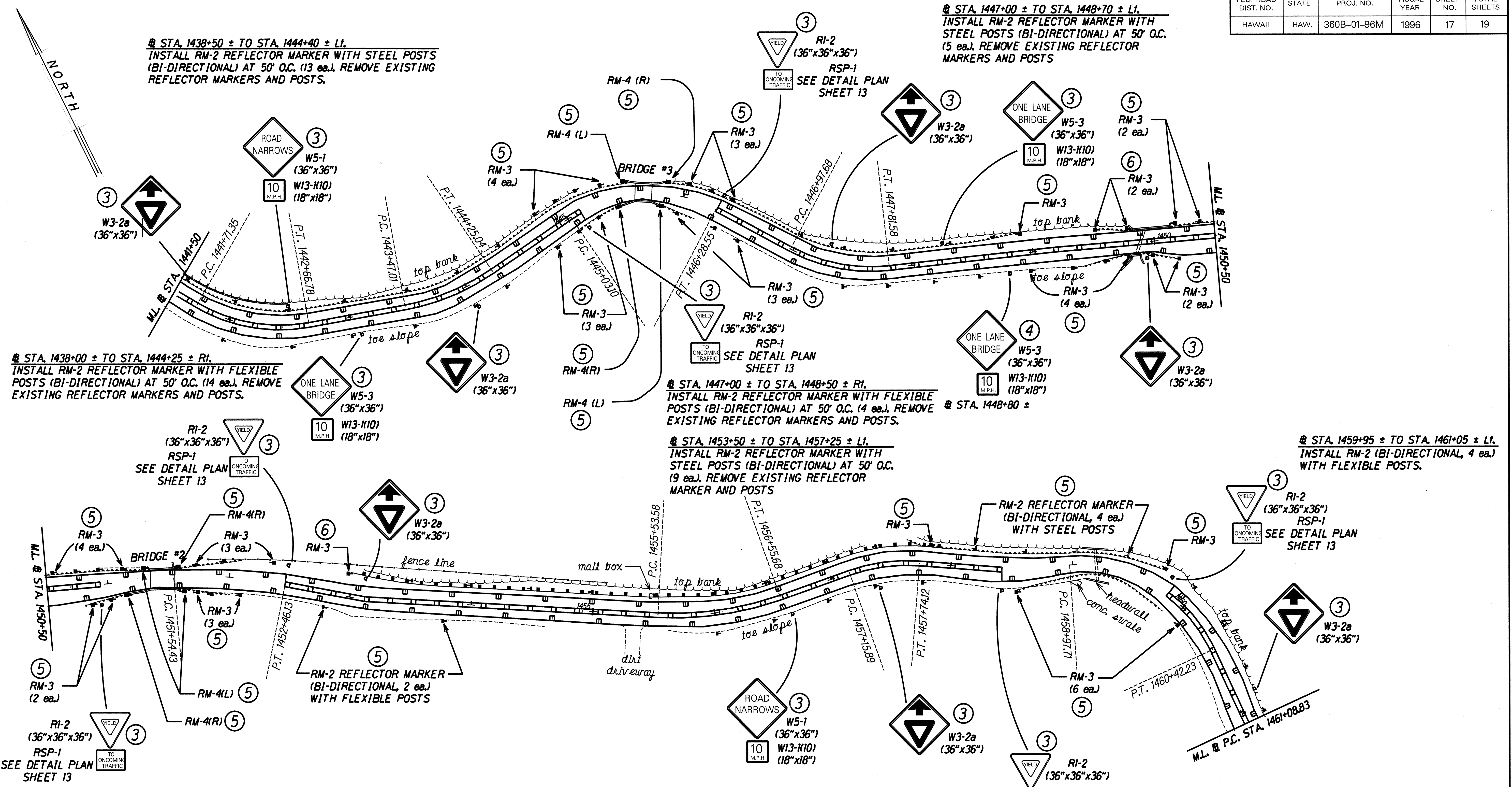
DATE
SURVEY PLOTTED BY
DRAWN BY
TRACED BY
NOTED BY
DESIGNED BY
QUANTITIES BY
CHECKED BY
ORIGINAL PLAN
NO. BOOK
QUANTITY
NO.



THIS WORK WAS PREPARED BY ME OR UNDER MY SUPERVISION
J. T. Tanaka
 R. T. TANAKA ENGINEERS, INC.
 CIVIL ENGINEERING - LAND SURVEYING

STATE OF HAWAII
 DEPARTMENT OF TRANSPORTATION
 HIGHWAYS DIVISION
SIGNING AND PAVEMENT MARKING PLAN
 HANA HIGHWAY RESURFACING
 OILOWAI BRIDGE TO KALAHU
 PROJECT NO. 360B-01-96M
 Scale: 1" = 40' Date: MAY, 1996
 SHEET No. 3 OF 5 SHEETS

FED. ROAD DIST. NO.	STATE	PROJ. NO.	FISCAL YEAR	SHEET NO.	TOTAL SHEETS
HAWAII	HAW.	360B-01-96M	1996	17	19



- KEY TO SIGNAGE:**
- ① Existing Sign (s) and Post (s) to remain.
 - ② Relocated Existing Sign (s) and Post (s)
 - ③ Remove Existing and Install New Sign (s) and Post (s).
 - ④ Install New Sign (s) and Post (s).
 - ⑤ Removed Existing Reflector Marker(s) with Post(s) and install new Reflector Marker(s) with Posts
 - ⑥ Install New Reflector Marker with Post.

DATE: _____
 SURVEY PLOTTED BY: _____
 DRAWN BY: _____
 ORIGINAL PLAN TRACED BY: _____
 NOTE BOOK DESIGNED BY: _____
 CHECKED BY: _____
 REVISIONS BY: _____
 DESIGNED BY: _____

KIRK T. TANAKA
 LICENSED PROFESSIONAL ENGINEER
 No. 6646-C
 HAWAII, U.S.A.

THIS WORK WAS PREPARED BY ME OR UNDER MY SUPERVISION
R. J. Jambala
 R. T. TANAKA ENGINEERS, INC.
 CIVIL ENGINEERING - LAND SURVEYING

STATE OF HAWAII
 DEPARTMENT OF TRANSPORTATION
 HIGHWAYS DIVISION

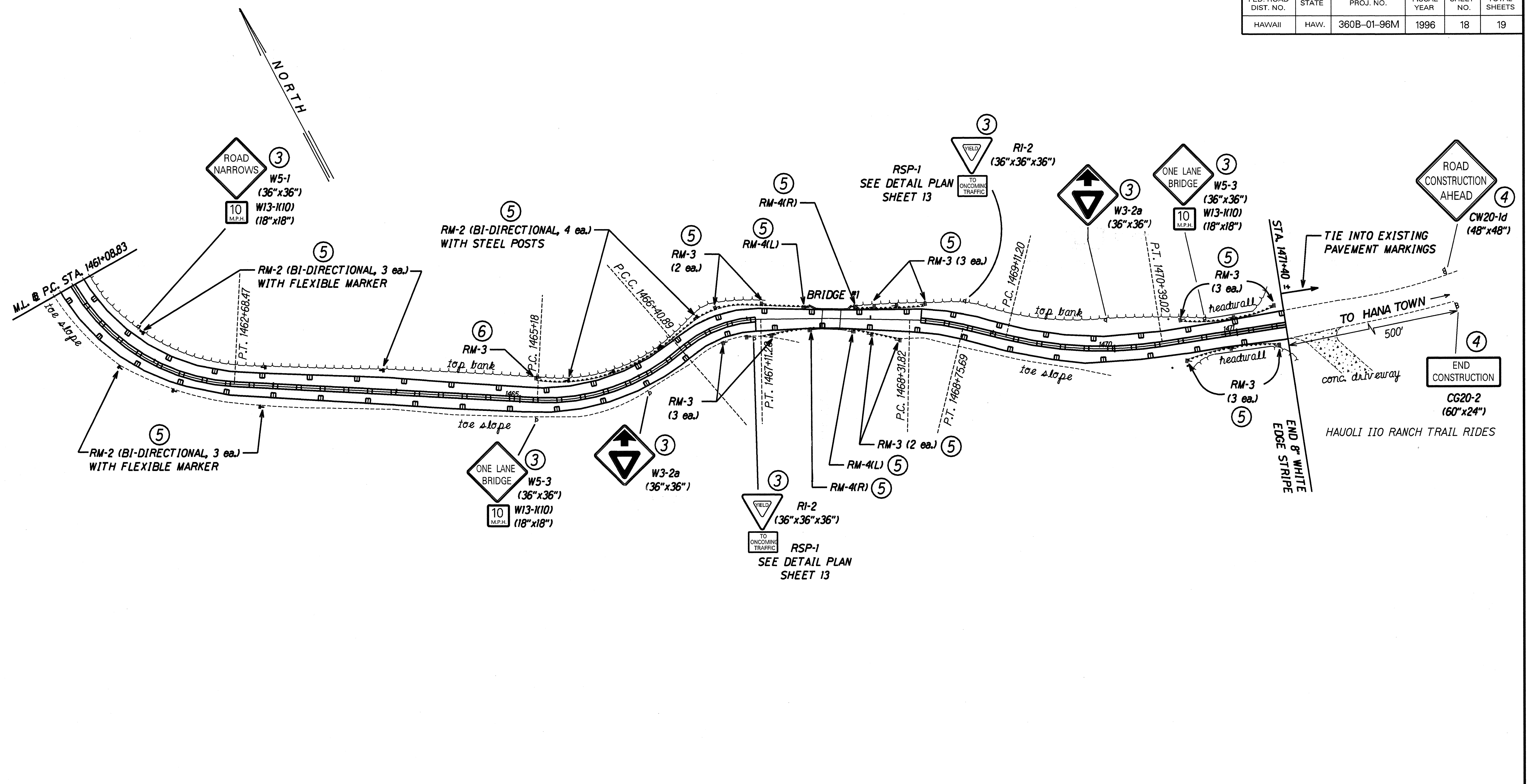
SIGNING AND PAVEMENT MARKING PLAN

HANA HIGHWAY RESURFACING
 OILOWAI BRIDGE TO KALAHU
 PROJECT NO. 360B-01-96M

Scale: 1" = 40' Date: MAY, 1996

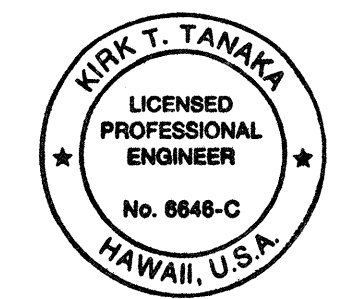
SHEET No. 4 OF 5 SHEETS

FED. ROAD DIST. NO.	STATE	PROJ. NO.	FISCAL YEAR	SHEET NO.	TOTAL SHEETS
HAWAII	HAW.	360B-01-96M	1996	18	19



- KEY TO SIGNAGE:**
- ① Existing Sign (s) and Post (s) to remain.
 - ② Relocated Existing Sign (s) and Post (s)
 - ③ Remove Existing and Install New Sign (s) and Post (s).
 - ④ Install New Sign (s) and Post (s).
 - ⑤ Removed Existing Reflector Markert(s) with Post(s) and install new Reflector Marker(s) with Posts
 - ⑥ Install New Reflector Marker with Post.

SURVEY PLOTTED BY	DATE
DRAWN BY	
DESIGNED BY	
QUANTITIES BY	
CHECKED BY	
ORIGINAL PLAN	
NOTE BOOK	
QUANTITIES	
CHECKED BY	



THIS WORK WAS PREPARED BY ME OR UNDER MY SUPERVISION
Kirk T. Tanaka
R. T. TANAKA ENGINEERS, INC.
 CIVIL ENGINEERING - LAND SURVEYING

STATE OF HAWAII
 DEPARTMENT OF TRANSPORTATION
 HIGHWAYS DIVISION

SIGNING AND PAVEMENT MARKING PLAN

**HANA HIGHWAY RESURFACING
 OLOWAI BRIDGE TO KALAHU**

PROJECT NO. 360B-01-96M
 Scale: 1" = 40' Date: MAY, 1996

SHEET No. 5 OF 5 SHEETS