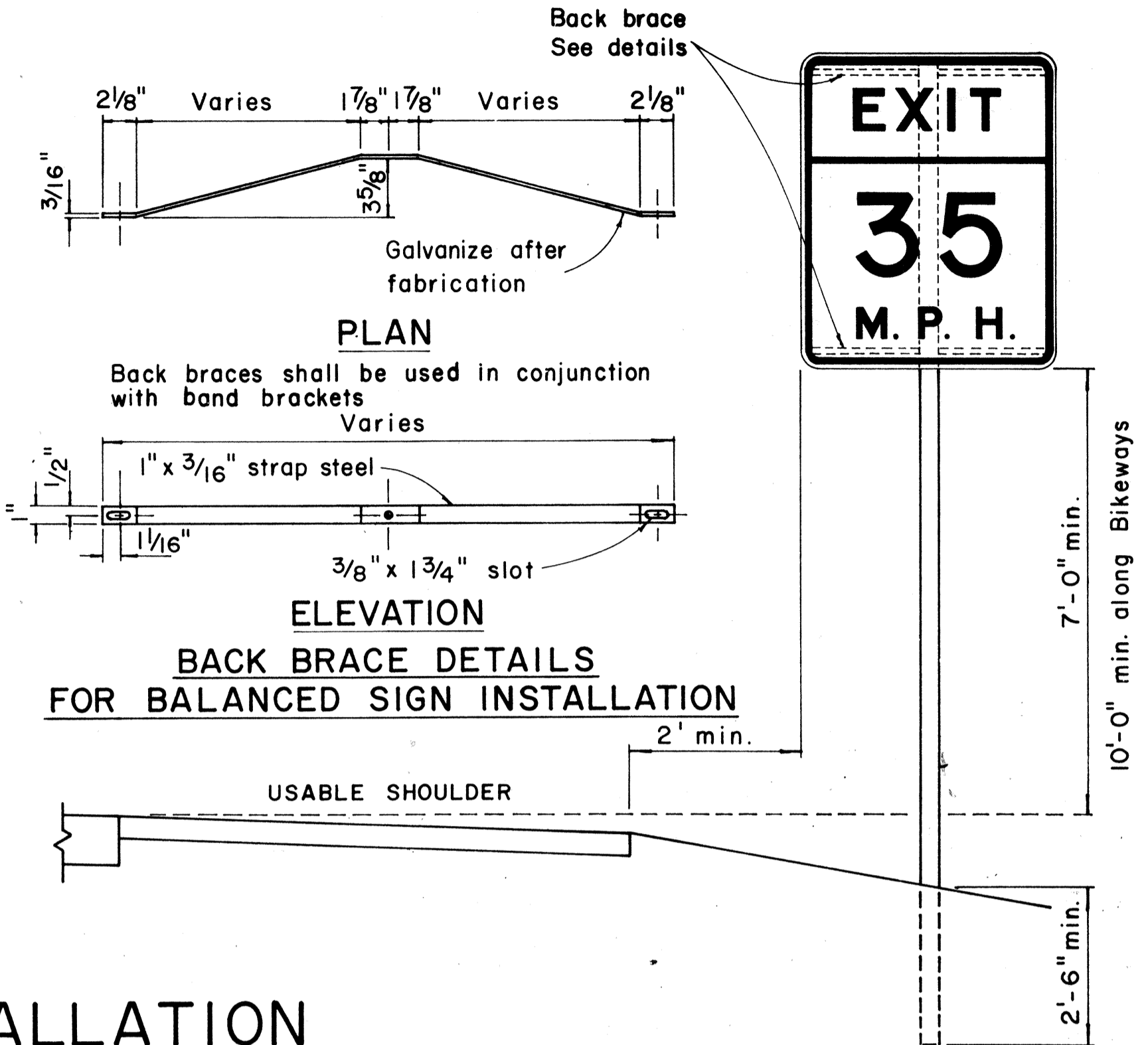
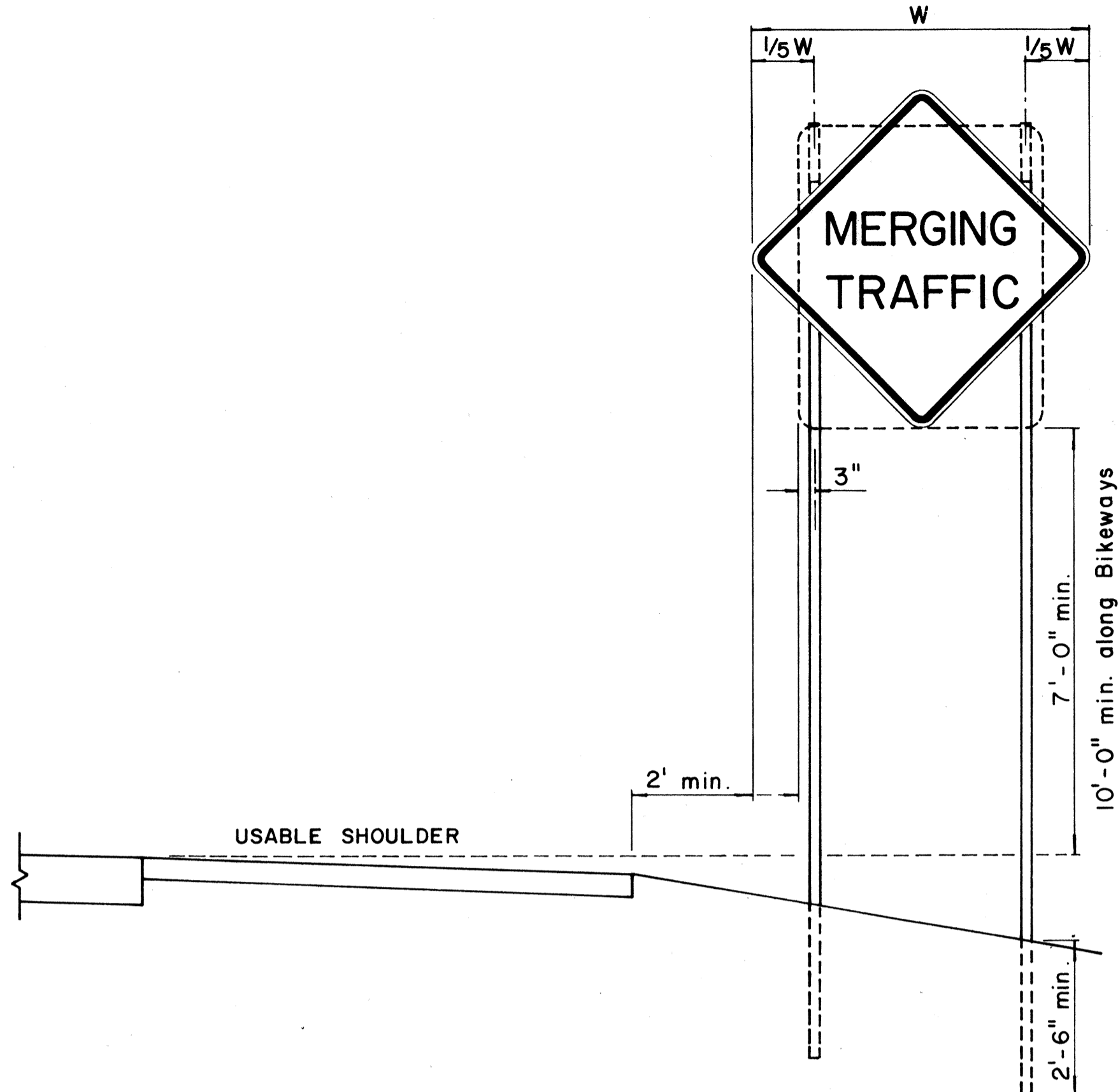
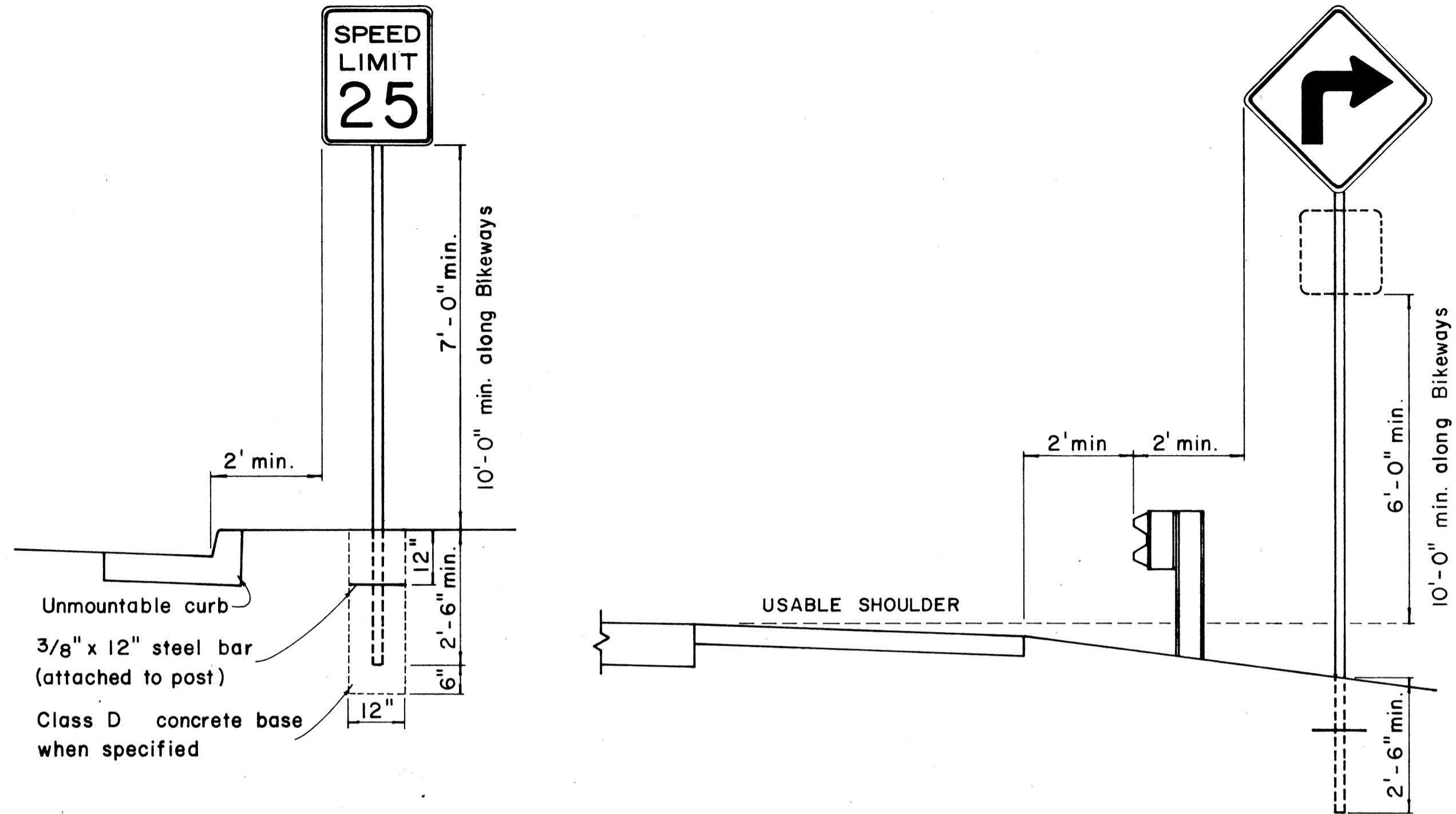
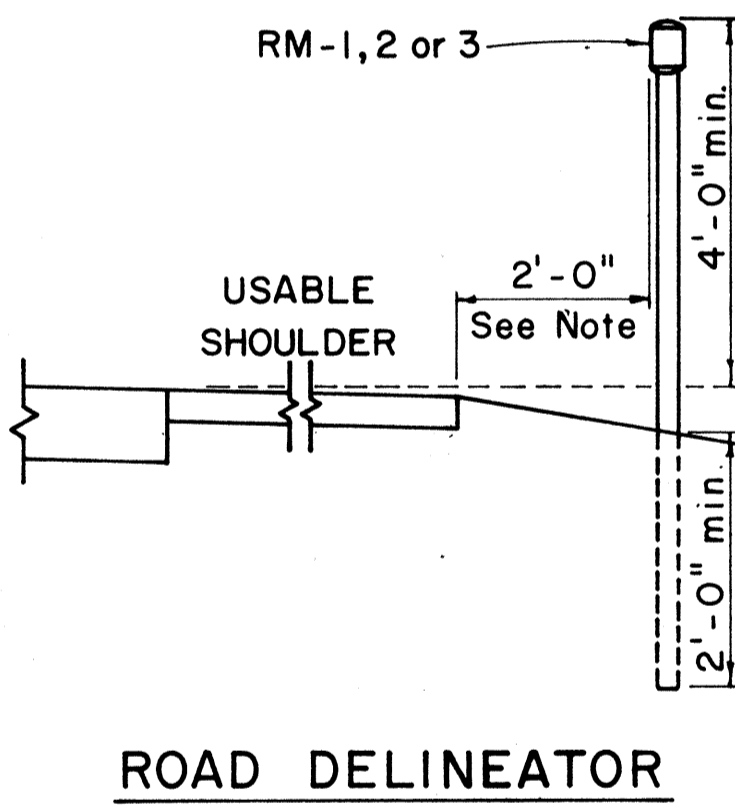


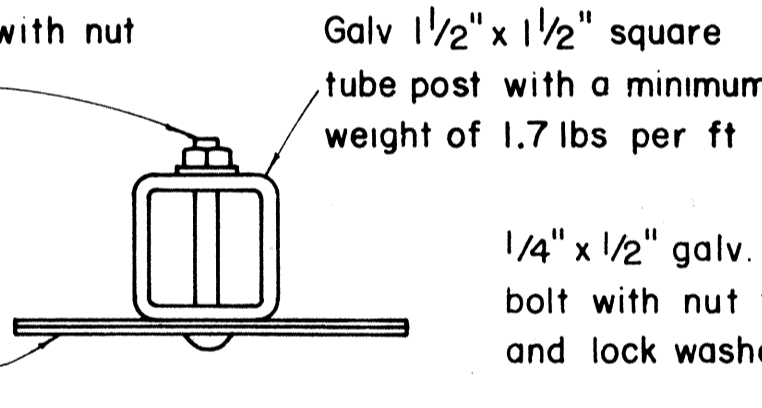
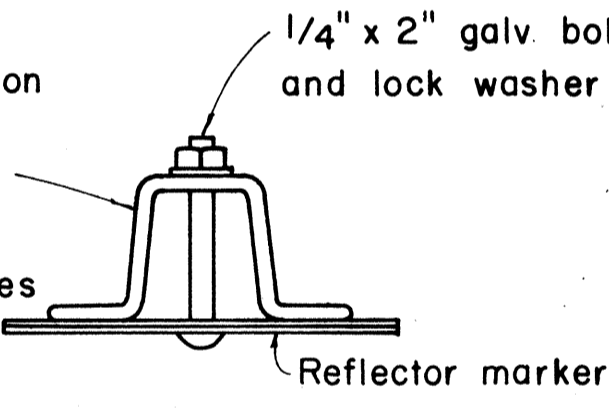
FED. ROAD DIST. NO.	STATE	PROJ. NO.	FISCAL YEAR	SHEET NO.	TOTAL SHEETS
HAWAII	HAW.	820AB-01-17	1977	23	24



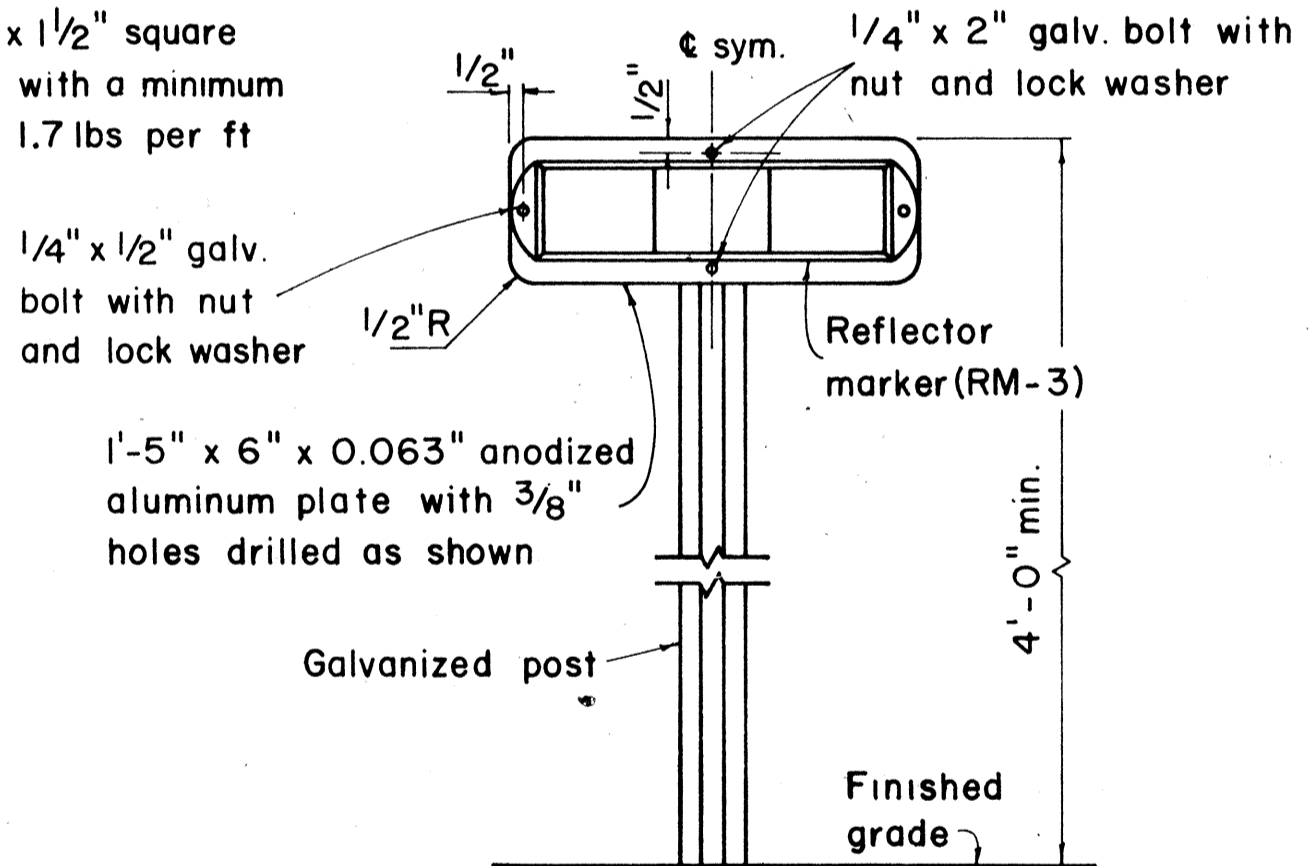
HEIGHT AND LATERAL LOCATION OF SIGNS - TYPICAL INSTALLATION



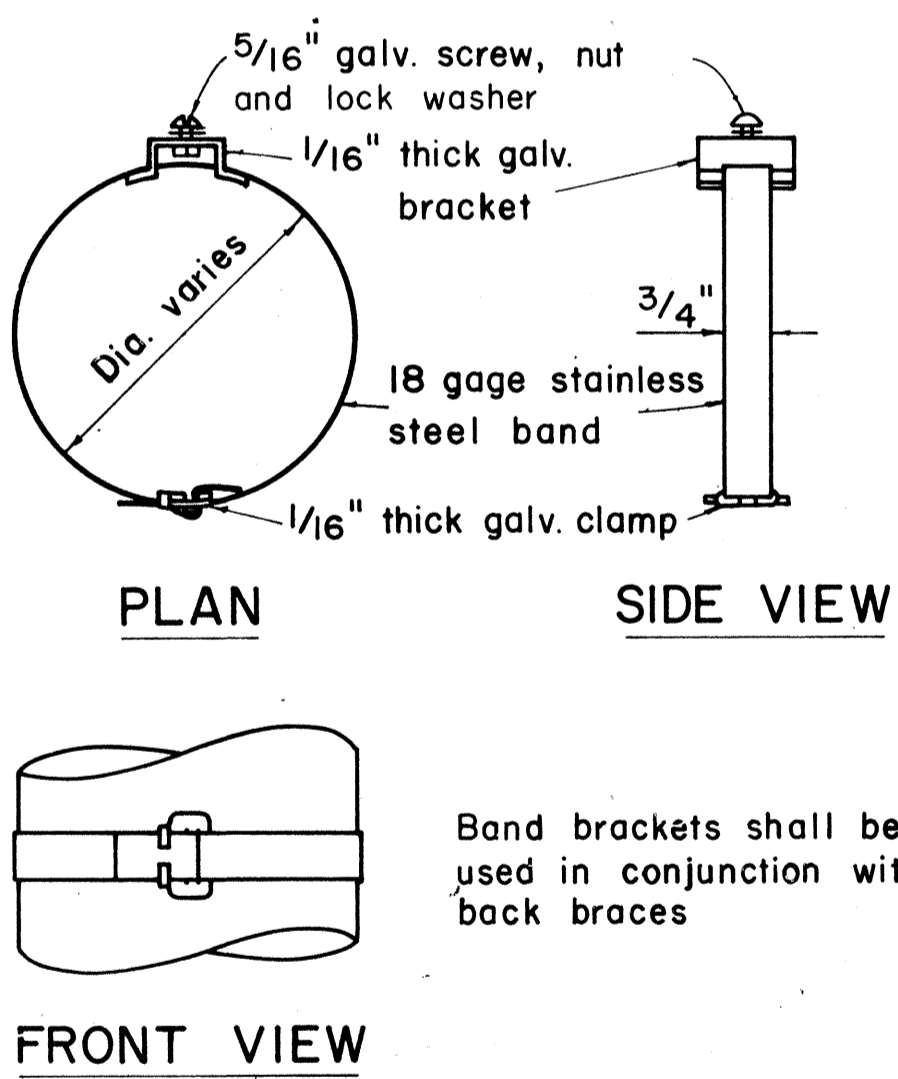
Galv. flanged channel
1/8" x 3/16" rolled section
post with a minimum
weight of 2 lbs. per ft.
Upper 2 ft. shall have
a single row of 3/8" holes
centered in the web at
1" o.c.



TYPICAL SECTION OF ROAD DELINEATOR



TYPICAL DETAIL
HORIZONTAL REFLECTOR MARKER
RM-3H



TYPICAL BAND BRACKET FOR
MOUNTING TRAFFIC SIGNS

- GENERAL NOTES:
- Sign posts shall be 2" galv. standard pipe or 2" x 2" galv. sq. tube post.
 - Signs 48" and wider or larger than 10 sq. ft. in area shall be mounted on two 2" galv. standard pipe or two 2" x 2" galv. sq. tube post.
 - Signs shall be attached to post with 5/16" galv. bolts with nuts and 7/8" x 0.06 stainless steel washers with neoprene rubber gasket.
 - Sign posts shall extend 3 1/2" above sign where required for City and County street name signs.
 - Reflector markers RM-1, 2, 3 shall be glass sphere reflector markers with 4" x 5" reflector units (as shown) or plastic prismatic reflector markers with 3" diameter reflector units.
 - Clearance markers (RM-3, RM-4) shall be installed with the edge of the marker in line with the inner edge of the obstruction.
 - (R) or (L) indicates right or left and shall be as shown on the plans.

APPROVAL RECOMMENDED:
Eichi Tanaka 12/29/69
TRAFFIC ENGINEER DATE

APPROVED:
John J. Zelen 12-29-69
ASSISTANT CHIEF, ENGINEERING DATE

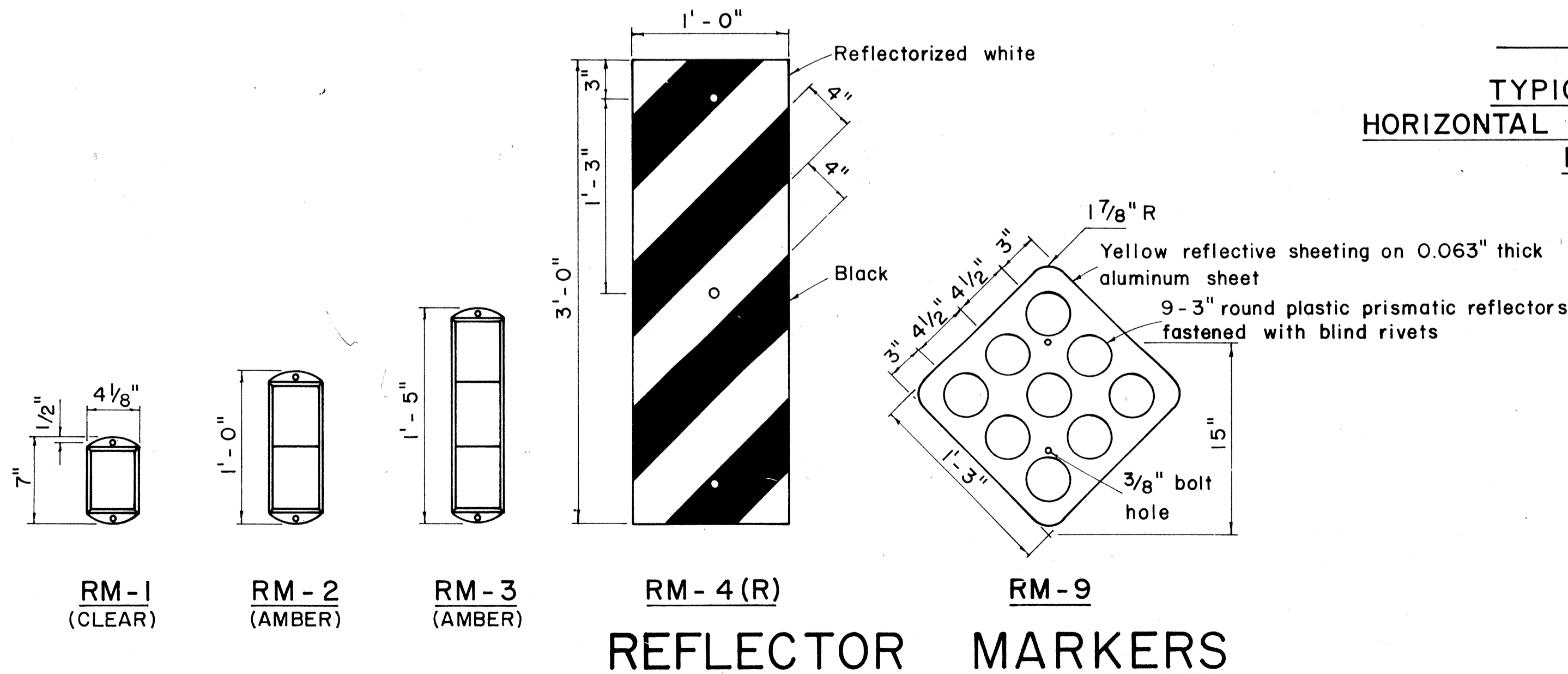
NO.	REVISION	APPROVED BY	DATE
1.	Revised Details.	H.L.	9-14-70

STATE OF HAWAII
DEPARTMENT OF TRANSPORTATION
HIGHWAYS DIVISION

STANDARD DETAILS
MISCELLANEOUS SIGN DETAILS

Not to scale March, 1968
SHEET No. 1 OF 2 SHEETS DT 100

DESIGNED BY	DATE
DRAWN BY	
CHECKED BY	
NOTED BY	
NO.	



REFLECTOR MARKERS

FED. ROAD DIST. NO.	STATE	PROJ. NO.	FISCAL YEAR	SHEET NO.	TOTAL SHEETS
HAWAII	HAW.	360AB-01-17	1977	24	24



CW20-1a 48" x 48"



CW20-2d 48" x 48"



CW20-3b 48" x 48"



CW20-4d 48" x 48"



CW20-5d(L) 48" x 48"



CW20-7c 48" x 48"



CW21-1 30" x 30"



CW21-2 30" x 30"



CW21-3 36" x 36"



CW21-4 36" x 36"



CW21-5 30" x 30"



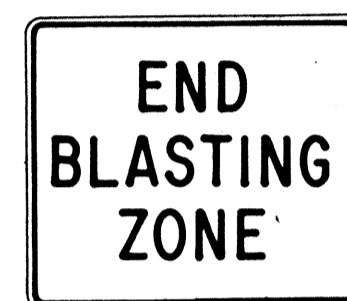
CW21-6 30" x 30"



CW22-1b 48" x 48"



CW22-2 42" x 36"



CW22-3 42" x 36"



CG20-1(5) 60" x 36"



CG20-2 60" x 24"



CM4-9(R) 30" x 24"



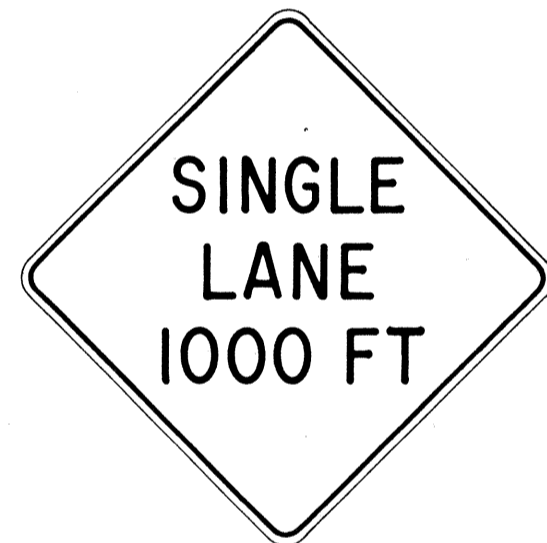
CM4-10(R) 48" x 18"



CG20-4 36" x 18"



CW23-1 36" x 36"



CW23-2b 48" x 48"



CW23-3(R) 48" x 48"

GENERAL NOTES

- Sign details shall conform to the FHWA publications "Manual on Uniform Traffic Control Devices for Streets and Highways," 1971, and "Standard Highway Signs," 1972, and as amended.
- All construction signs shall be reflectorized.
- All construction signs shall have $\frac{3}{8}$ " bolt holes drilled at appropriate locations.
- Numerals in () indicates numerals to be inserted for sign message. (R) or (L) indicates right or left.
- For "CW" series signs, suffixes a,b,c and d are as follows:
a-1500 FT, b-1000 FT, c-500 FT and d-AHEAD.

NO.	REVISION	APPROVED BY	DATE
1	Supersedes Sht. DT 104 Approved 12-30-69	H.C.	3/23/72
2	Revised General Note 1	H.C.	10/16/74
3	Revised General Note 2	M.H.	9-16-75
4	Revised General Note 2 and sign CG20-1(5)	H.C.	9-14-76

APPROVAL RECOMMENDED:
Erich Tanaka 3/21/72
TRAFFIC ENGINEER DATE

APPROVED:
Arthur S. S. S. 3/23/72
ASSISTANT CHIEF, ENGINEERING DATE

STATE OF HAWAII
DEPARTMENT OF TRANSPORTATION
HIGHWAYS DIVISION

STANDARD DETAILS CONSTRUCTION SIGNS

NOT TO SCALE

SHEET No. 2 OF 2 SHEETS DT 104

ORIGINAL PLAN	SURVEY PLOTTED BY	DATE
NOTE BOOK	DESIGNED BY	
NO.	CHECKED BY	