

- NOTE:**
- 1- THE ENGINEER SHALL DETERMINE EXISTING CULVERT HEADWALLS TO BE REPAIRED. CONTRACTOR TO USE EXISTING STONES WHERE POSSIBLE WITH 1:3 MORTAR PAYMENT SHALL BE AT THE UNIT PRICE BID FOR "RECONSTRUCTED C.R.M. WALL."
 - 2- ROADWAY EXCAVATION WILL BE CONSIDERED INCIDENTAL & WILL NOT BE PAID FOR DIRECTLY EXCEPT FOR THE FOLLOWING ITEMS:
 - 1- Rock Excavation From STA 5+00 TO STA 6+50
 - 2- " " " " 21+50 TO STA 23+00
 - 3- " " " " 104+00 TO STA 105+00
 - 4- " " " " 113+00 TO STA 117+00
 - 5- Rock wall Exc. From STA 18+50 TO STA 21+50
 - 3- CONTRACTOR SHALL INSTALL ONE (1) REFLECTOR ON THE TRAFFIC APPROACH END OF ALL NEW GUARDRAILS
 - 4- HEADWALL REMOVAL IS THE SECTION OF C.R.M. WALL ABOVE THE FINISH SHOULDER GRADE UNLESS OTHERWISE STATED TOP OF REMAINING C.R.M. WALL SHALL BE CAPPED WITH 1:3 MORTAR
 - 5 CONTRACTOR SHALL INSTALL ONE (1) REFLECTOR AT EACH NEW OR EXISTING CATCH BASIN

SURVEY PLOTTED BY	DATE
DRAWN BY	
DESIGNED BY	
NOTE BOOK	
CHECKED BY	
NO.	

Sta. 178+75
 1- Extend concrete culvert 6' at outlet
 2- Const. new C.R.M. headwall 5.5' high (78 cu.ft.)
 3- Remove exist C.R.M. inlet & outlet headwall (99 cu.ft.)
 4- Install two (2) guide Posts

Sta. 198+00 to Sta. 199+50
 Install 150 L.F. guard rail

Sta. 198+56
 1- Extend concrete culvert 10' at outlet
 2- Const. new C.R.M. headwall 5.5' high (78 cu.ft.)

Sta. 211+86
 1- Extend concrete culvert 6' at outlet
 2- Const. new C.R.M. headwall 5.5' high (78 cu.ft.)
 3- Relocate one (1) guide post

Sta. 185+25
 1- Extend concrete culvert 6' at outlet
 2- Const. new C.R.M. headwall 6.5' high (106 cu.ft.)
 3- Remove a portion of existing C.R.M. headwall at inlet & outlet (45 cu.ft.)
 4- Relocate one (1) exist. guide post

Sta. 192+50 to Sta. 194+25
 Install 175 L.F. guard rail

Sta. 227+75 to Sta. 228+50
 Install 75 L.F. guard rail

Sta. 190+75 to Sta. 192+00
 Install 125 L.F. guard rail

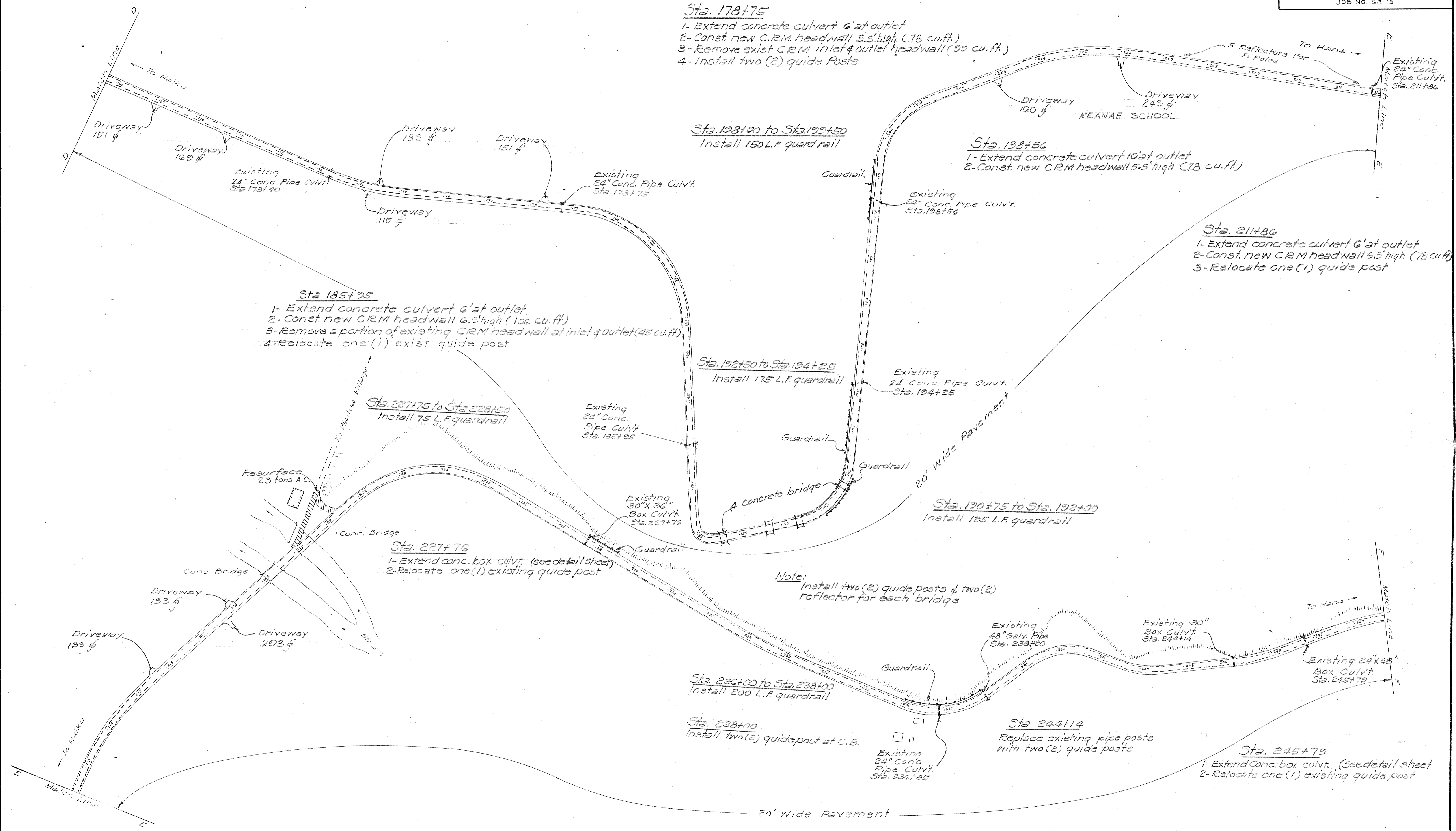
Sta. 227+76
 1- Extend conc. box culvt. (see detail sheet)
 2- Relocate one (1) existing guide post

Note:
 Install two (2) guide posts & two (2) reflector for each bridge

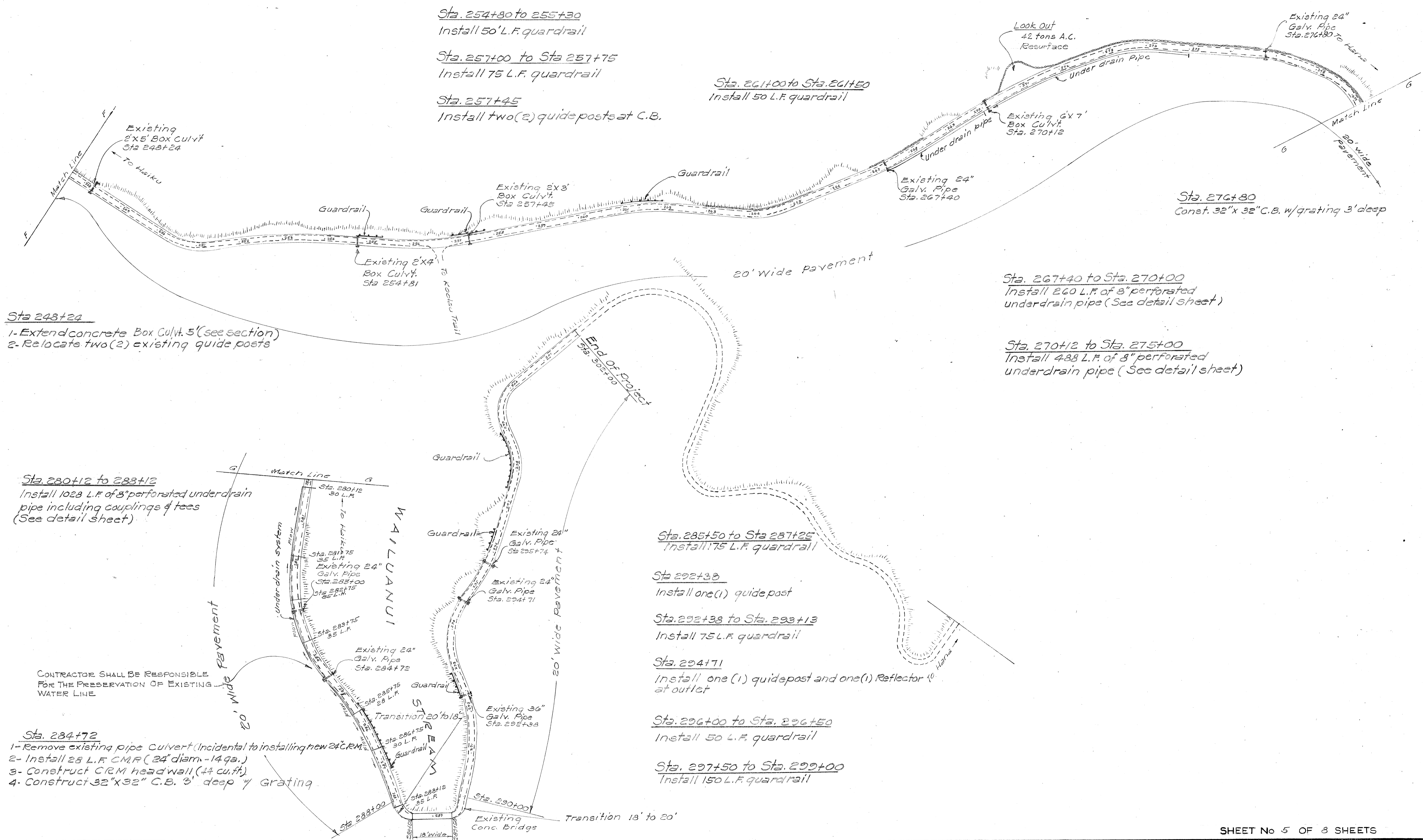
Sta. 236+00 to Sta. 238+00
 Install 200 L.F. guard rail

Sta. 244+14
 Replace existing pipe posts with two (2) guide posts

Sta. 245+79
 1- Extend Conc. box culvt. (see detail sheet)
 2- Relocate one (1) existing guide post



SURVEY PLOTTED BY	DATE
DRAWN BY	
DESIGNED BY	
QUANTITIES BY	
NOTE BOOK	
CHECKED BY	
No.	



Sta. 254+80 to 255+30
Install 50' L.F. guardrail

Sta. 257+00 to Sta. 257+75
Install 75 L.F. guardrail

Sta. 257+45
Install two (2) guideposts at C.B.

Sta. 267+00 to Sta. 267+50
Install 50 L.F. guardrail

Look Out
42 tons A.C.
Resurface

Existing 24"
Galv. Pipe
Sta. 276+80 To Hana

Existing 6'x7'
Box Culv.
Sta. 270+12

Existing 24"
Galv. Pipe
Sta. 267+40

Sta. 276+80
Const. 32"x32" C.B. w/grating 3' deep

Sta. 267+40 to Sta. 270+00
Install 260 L.F. of 8" perforated
underdrain pipe (See detail sheet)

Sta. 270+12 to Sta. 275+00
Install 488 L.F. of 8" perforated
underdrain pipe (See detail sheet)

Sta. 248+24
1- Extend concrete Box Culv. 5' (see section)
2- Relocate two (2) existing guideposts

Sta. 280+12 to 283+12
Install 1028 L.F. of 8" perforated underdrain
pipe including couplings & tees
(See detail sheet)

Sta. 285+50 to Sta. 287+25
Install 175 L.F. guardrail

Sta. 292+30
Install one (1) guidepost

Sta. 292+38 to Sta. 293+13
Install 75 L.F. guardrail

Sta. 294+71
Install one (1) guidepost and one (1) Reflector 10'
at outlet

Sta. 296+00 to Sta. 296+50
Install 50 L.F. guardrail

Sta. 297+50 to Sta. 299+00
Install 150 L.F. guardrail

CONTRACTOR SHALL BE RESPONSIBLE
FOR THE PRESERVATION OF EXISTING
WATER LINE.

Sta. 284+72
1- Remove existing pipe Culvert (Incidental to installing new 24" CRM)
2- Install 28 L.F. CRM (24" diam. - 14 ga.)
3- Construct CRM head wall (44 cu. ft.)
4- Construct 32"x32" C.B. 3' deep w/ Grating

SURVEY PLOTTED BY	DATE
DESIGNED BY	
CHECKED BY	
NOTE BOOK	
QUANTITIES BY	
CHECKED BY	