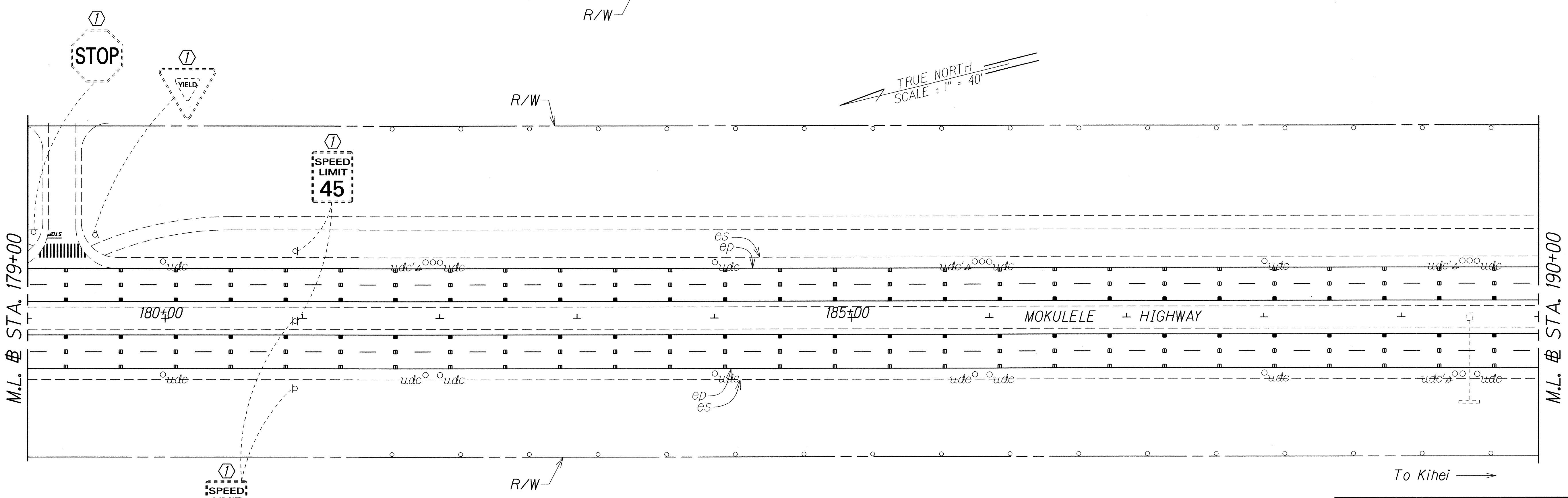
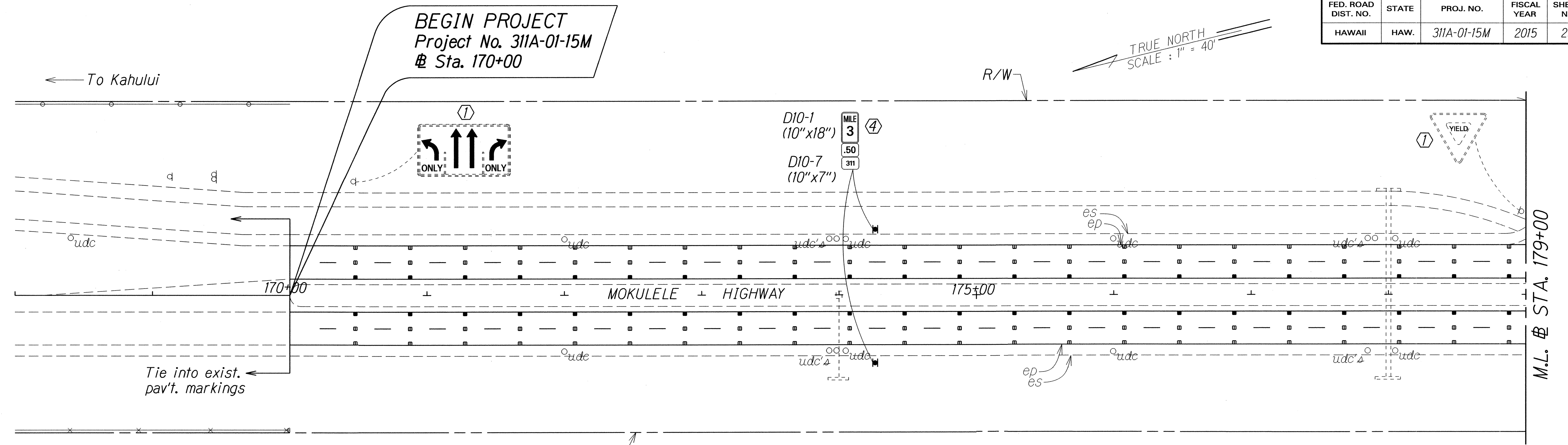


FED. ROAD DIST. NO.	STATE	PROJ. NO.	FISCAL YEAR	SHEET NO.	TOTAL SHEETS
HAWAII	HAW.	311A-01-15M	2015	25	33



ORIGINAL PLAN	DATE
DESIGNED BY	
DRAWN BY	
CHECKED BY	
NOTED BY	
QUANTITIES BY	
DATE	

NOTES:
 1. The limits of Shoulder Milled Rumble Strip.
 See General Notes No. 13.

- KEY:**
- ① Exist. Sign(s) & Post(s) to Remain
 - ② Remove Exist. Sign(s) & Post(s)
 - ③ Remove Exist. & Install New Sign(s) & Post(s)
 - ④ Install New Sign(s) & Post(s)

STATE OF HAWAII
 DEPARTMENT OF TRANSPORTATION
 HIGHWAYS DIVISION

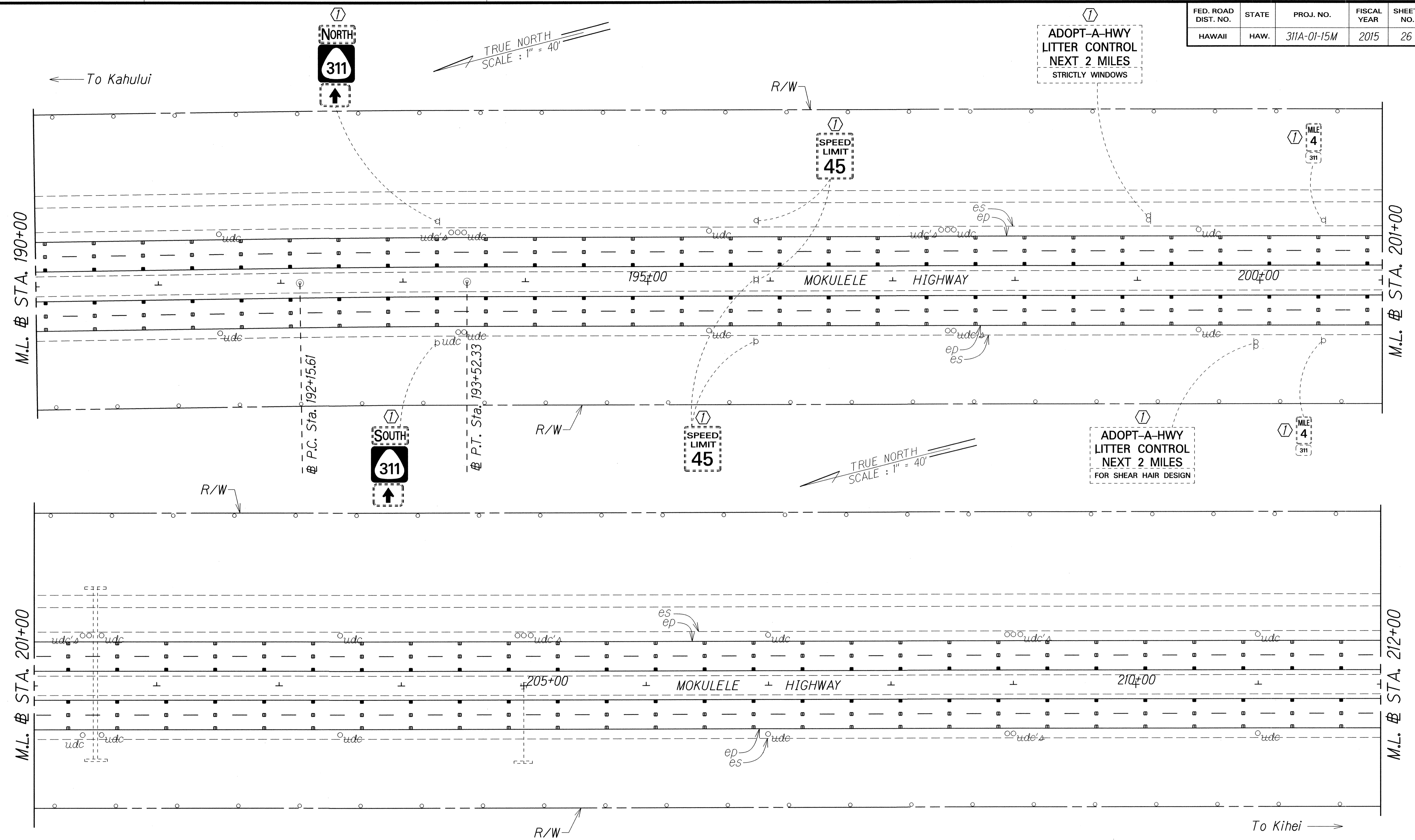
SIGNING & PAVEMENT MARKING PLANS

MOKULELE HIGHWAY
PAVEMENT PREVENTIVE MAINTENANCE
 Vicinity of Maui Humane Society to North Kihei Road
 Project No. 311A-01-15M

Scale: 1" = 40' Date: December, 2014

SHEET No. 1 OF 9 SHEETS

FED. ROAD DIST. NO.	STATE	PROJ. NO.	FISCAL YEAR	SHEET NO.	TOTAL SHEETS
HAWAII	HAW.	311A-01-15M	2015	26	33



DESIGNED BY	DATE
DRAWN BY	
TRACED BY	
DESIGNED BY	
QUANTITIES BY	
CHECKED BY	

NOTES:
 1. The limits of Shoulder Milled Rumble Strip.
 See General Notes No. 13.

- KEY:**
- ① Exist. Sign(s) & Post(s) to Remain
 - ② Remove Exist. Sign(s) & Post(s)
 - ③ Remove Exist. & Install New Sign(s) & Post(s)
 - ④ Install New Sign(s) & Post(s)

STATE OF HAWAII
 DEPARTMENT OF TRANSPORTATION
 HIGHWAYS DIVISION

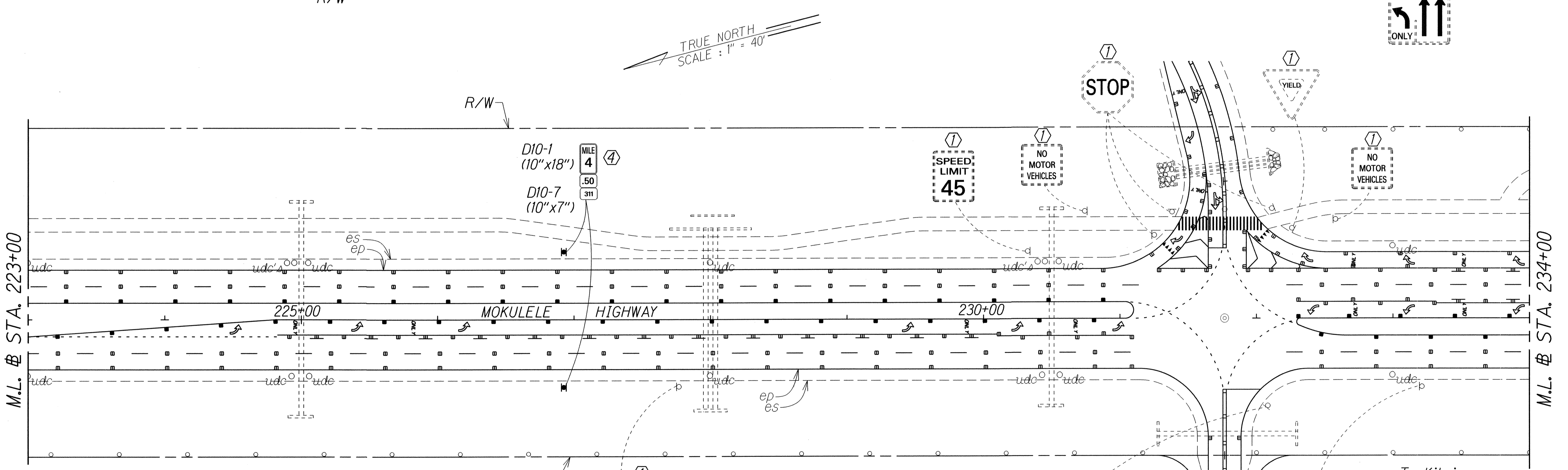
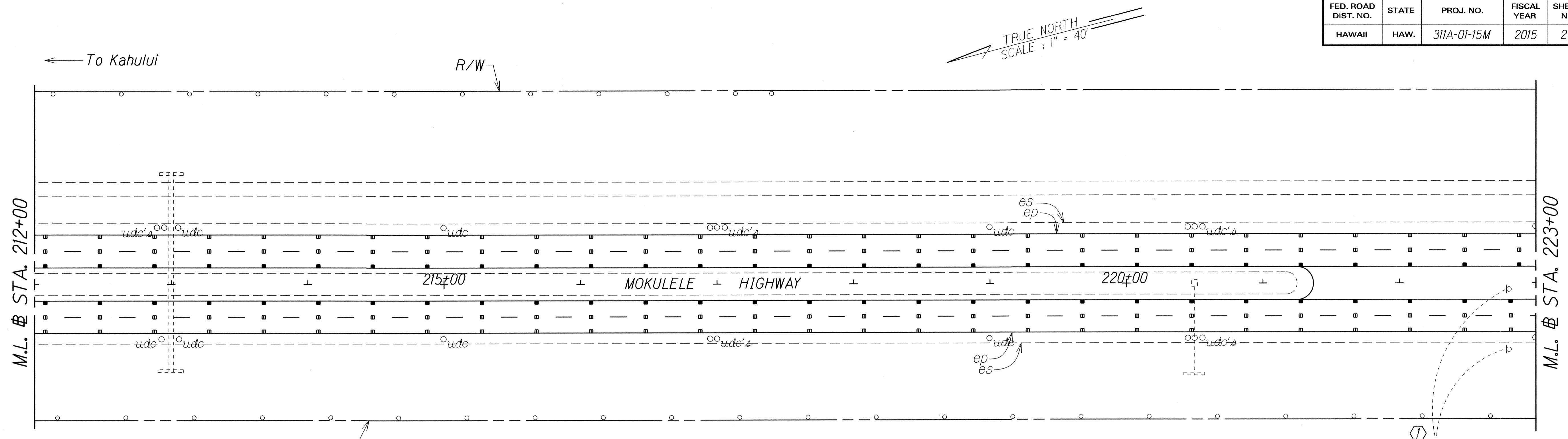
SIGNING & PAVEMENT MARKING PLANS

MOKULELE HIGHWAY
PAVEMENT PREVENTIVE MAINTENANCE
 Vicinity of Maui Humane Society to North Kihei Road
 Project No. 311A-01-15M

Scale: 1" = 40' Date: December, 2014

SHEET No. 2 OF 9 SHEETS

FED. ROAD DIST. NO.	STATE	PROJ. NO.	FISCAL YEAR	SHEET NO.	TOTAL SHEETS
HAWAII	HAW.	311A-01-15M	2015	27	33



SURVEY DICTATED BY	DATE
DRAWN BY	
TRACED BY	
DESIGNED BY	
QUANTITIES BY	
CHECKED BY	

- KEY:**
- ① Exist. Sign(s) & Post(s) to Remain
 - ② Remove Exist. Sign(s) & Post(s)
 - ③ Remove Exist. & Install New Sign(s) & Post(s)
 - ④ Install New Sign(s) & Post(s)

NOTES:
 1. The limits of Shoulder Milled Rumble Strip.
 See General Notes No. 13.

STATE OF HAWAII
 DEPARTMENT OF TRANSPORTATION
 HIGHWAYS DIVISION

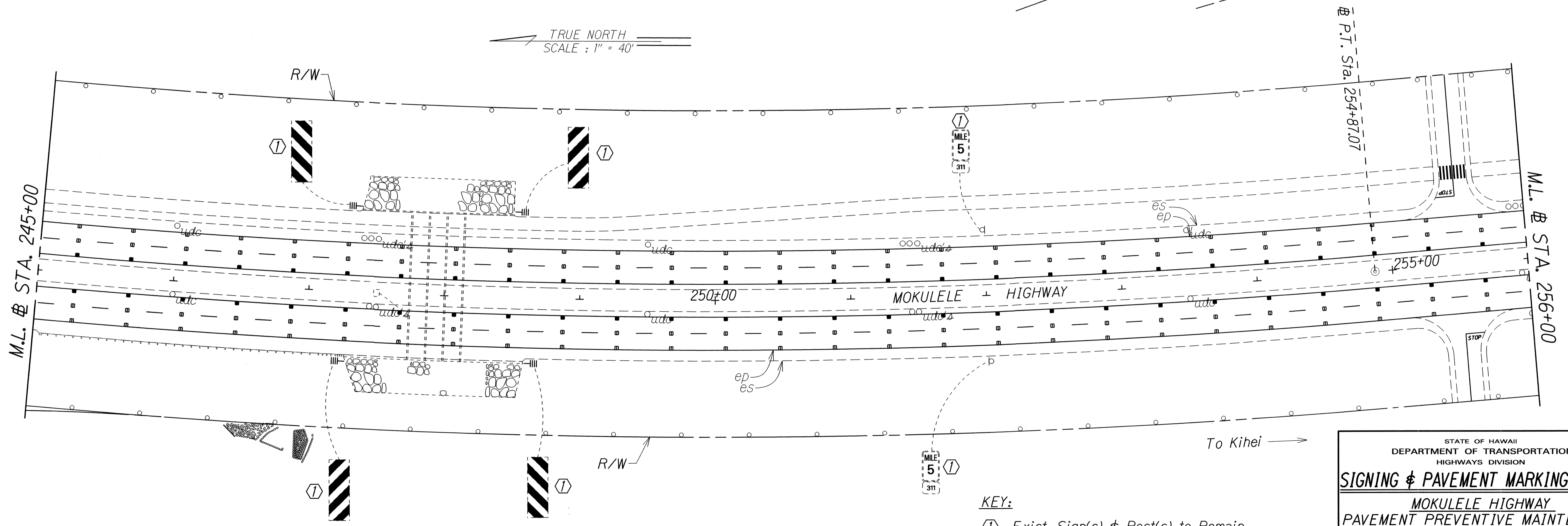
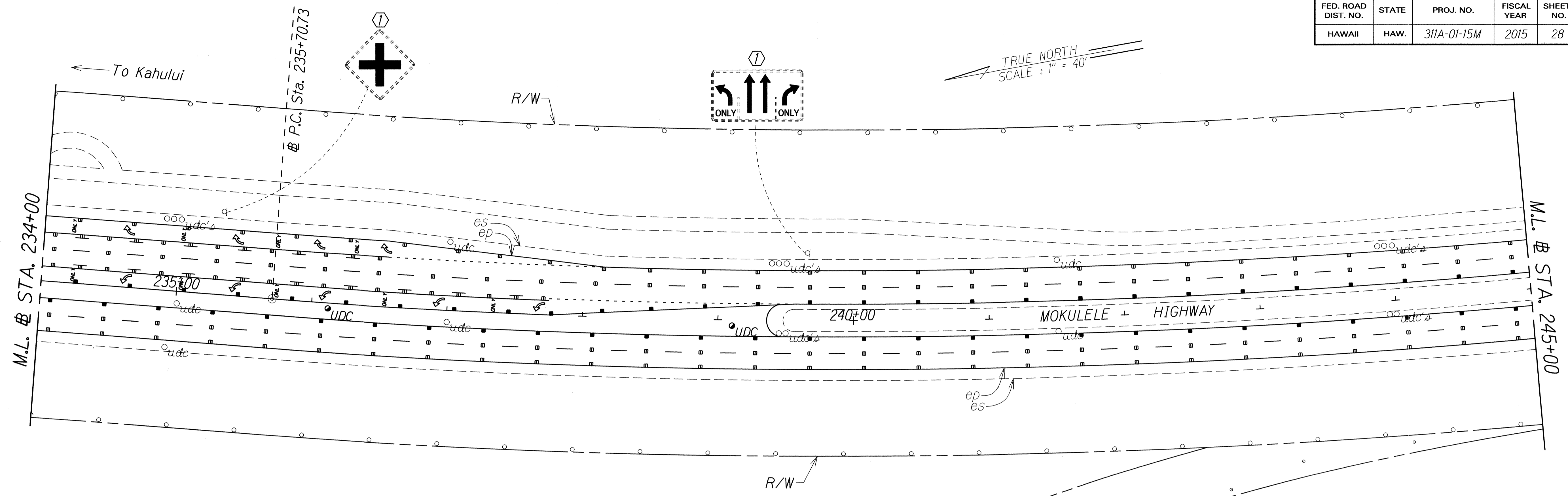
SIGNING & PAVEMENT MARKING PLANS

MOKULELE HIGHWAY
PAVEMENT PREVENTIVE MAINTENANCE
 Vicinity of Maui Humane Society to North Kihei Road
 Project No. 311A-01-15M

Scale: 1" = 40' Date: December, 2014

SHEET No. 3 OF 9 SHEETS

FED. ROAD DIST. NO.	STATE	PROJ. NO.	FISCAL YEAR	SHEET NO.	TOTAL SHEETS
HAWAII	HAW.	311A-01-15M	2015	28	33



DESIGNED BY	DATE
DRAWN BY	
CHECKED BY	
NOTED BY	
QUANTITIES BY	
NO.	

NOTES:
 1. The limits of Shoulder Milled Rumble Strip.
 See General Notes No. 13.

- KEY:**
- ① Exist. Sign(s) & Post(s) to Remain
 - ② Remove Exist. Sign(s) & Post(s)
 - ③ Remove Exist. & Install New Sign(s) & Post(s)
 - ④ Install New Sign(s) & Post(s)

STATE OF HAWAII
 DEPARTMENT OF TRANSPORTATION
 HIGHWAYS DIVISION

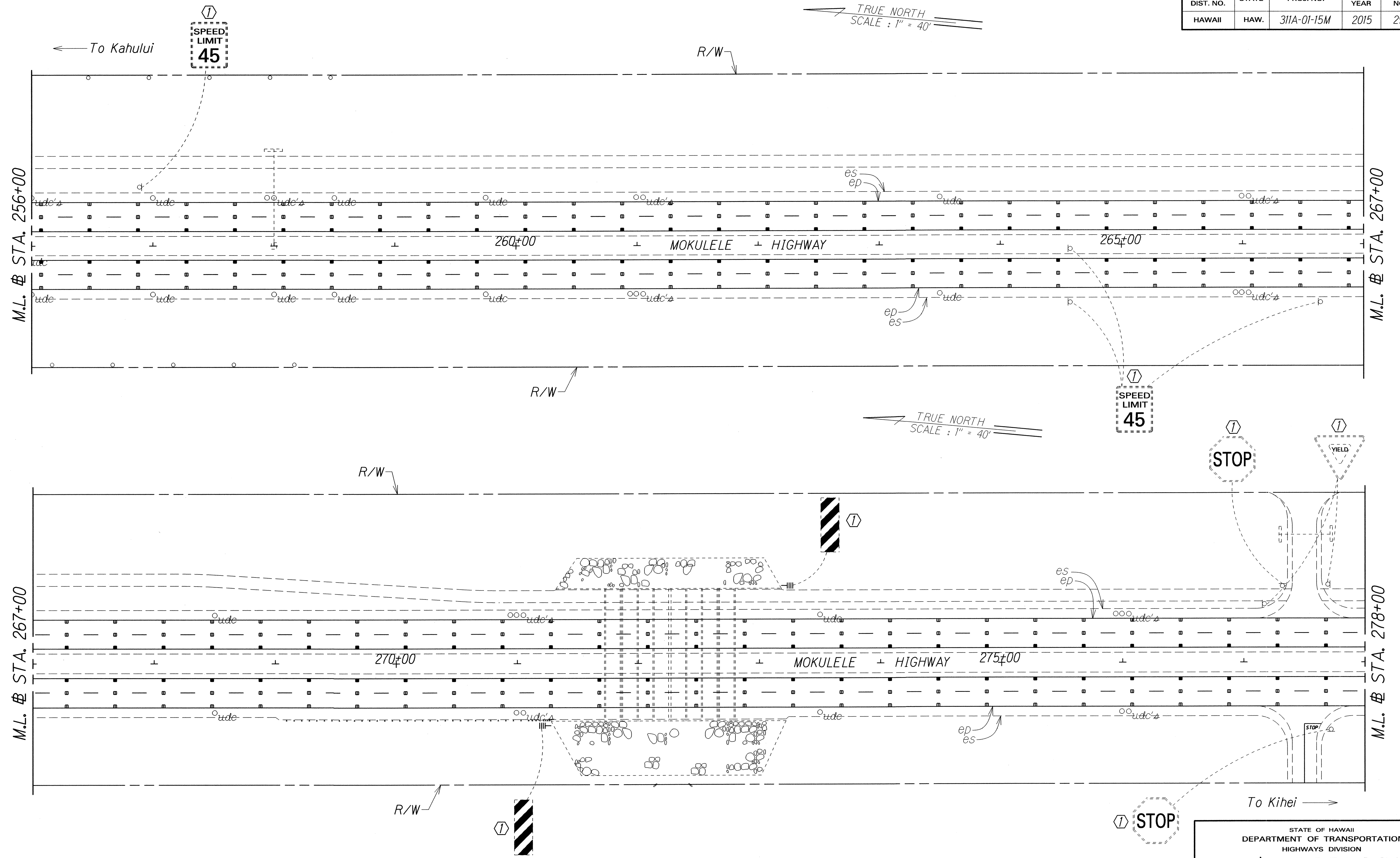
SIGNING & PAVEMENT MARKING PLANS

MOKULELE HIGHWAY
PAVEMENT PREVENTIVE MAINTENANCE
 Vicinity of Maui Humane Society to North Kihei Road
 Project No. 311A-01-15M

Scale: 1" = 40' Date: December, 2014

SHEET No. 4 OF 9 SHEETS

FED. ROAD DIST. NO.	STATE	PROJ. NO.	FISCAL YEAR	SHEET NO.	TOTAL SHEETS
HAWAII	HAW.	311A-01-15M	2015	29	33



TRUE NORTH
SCALE : 1" = 40'

TRUE NORTH
SCALE : 1" = 40'

DESIGNED BY	DATE
DRAWN BY	
CHECKED BY	
NOTED BY	
QUANTITIES BY	
CHECKED BY	

NOTES:
1. The limits of Shoulder Milled Rumble Strip.
See General Notes No. 13.

- KEY:**
- ① Exist. Sign(s) & Post(s) to Remain
 - ② Remove Exist. Sign(s) & Post(s)
 - ③ Remove Exist. & Install New Sign(s) & Post(s)
 - ④ Install New Sign(s) & Post(s)

STATE OF HAWAII
DEPARTMENT OF TRANSPORTATION
HIGHWAYS DIVISION

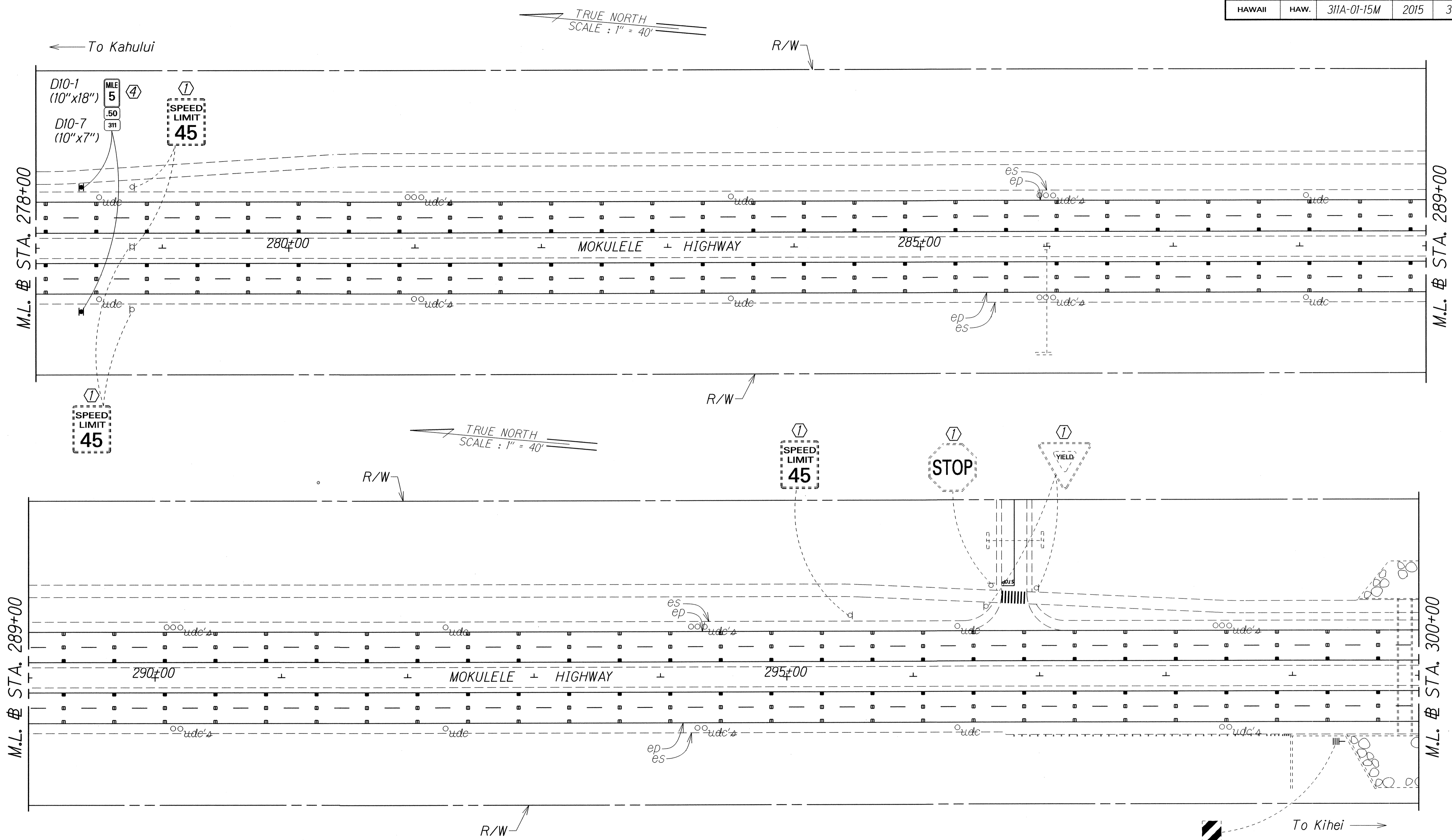
SIGNING & PAVEMENT MARKING PLANS

MOKULELE HIGHWAY
PAVEMENT PREVENTIVE MAINTENANCE
Vicinity of Maui Humane Society to North Kihei Road
Project No. 311A-01-15M

Scale: 1" = 40' Date: December, 2014

SHEET No. 5 OF 9 SHEETS

FED. ROAD DIST. NO.	STATE	PROJ. NO.	FISCAL YEAR	SHEET NO.	TOTAL SHEETS
HAWAII	HAW.	311A-01-15M	2015	30	33



DESIGNED BY	DATE
DRAWN BY	
TRACED BY	
DESIGNED BY	
QUANTITIES BY	
CHECKED BY	

NOTES:
 1. The limits of Shoulder Milled Rumble Strip.
 See General Notes No. 13.

- KEY:**
- ① Exist. Sign(s) & Post(s) to Remain
 - ② Remove Exist. Sign(s) & Post(s)
 - ③ Remove Exist. & Install New Sign(s) & Post(s)
 - ④ Install New Sign(s) & Post(s)

STATE OF HAWAII
 DEPARTMENT OF TRANSPORTATION
 HIGHWAYS DIVISION

SIGNING & PAVEMENT MARKING PLANS

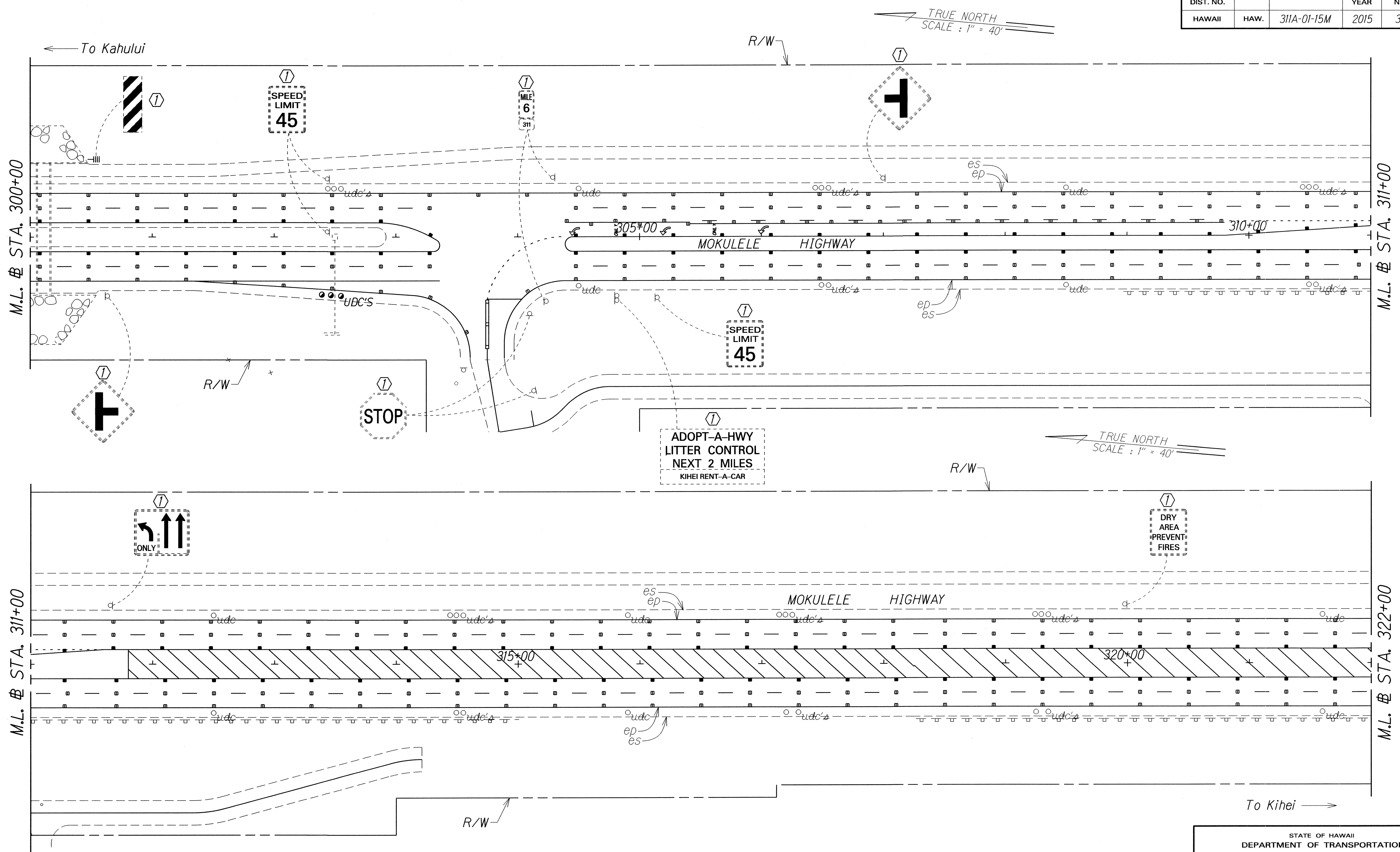
MOKULELE HIGHWAY
PAVEMENT PREVENTIVE MAINTENANCE
 Vicinity of Maui Humane Society to North Kihei Road

Project No. 311A-01-15M

Scale: 1" = 40' Date: December, 2014

SHEET No. 6 OF 9 SHEETS

FED. ROAD DIST. NO.	STATE	PROJ. NO.	FISCAL YEAR	SHEET NO.	TOTAL SHEETS
HAWAII	HAW.	311A-01-15M	2015	31	33



DESIGNED BY	DATE
DRAWN BY	
CHECKED BY	
NOTED BY	
QUANTITIES BY	
CHECKED BY	

NOTES:
 1. The limits of Shoulder Milled Rumble Strip.
 See General Notes No. 13.

- KEY:**
- ① Exist. Sign(s) & Post(s) to Remain
 - ② Remove Exist. Sign(s) & Post(s)
 - ③ Remove Exist. & Install New Sign(s) & Post(s)
 - ④ Install New Sign(s) & Post(s)

STATE OF HAWAII
 DEPARTMENT OF TRANSPORTATION
 HIGHWAYS DIVISION

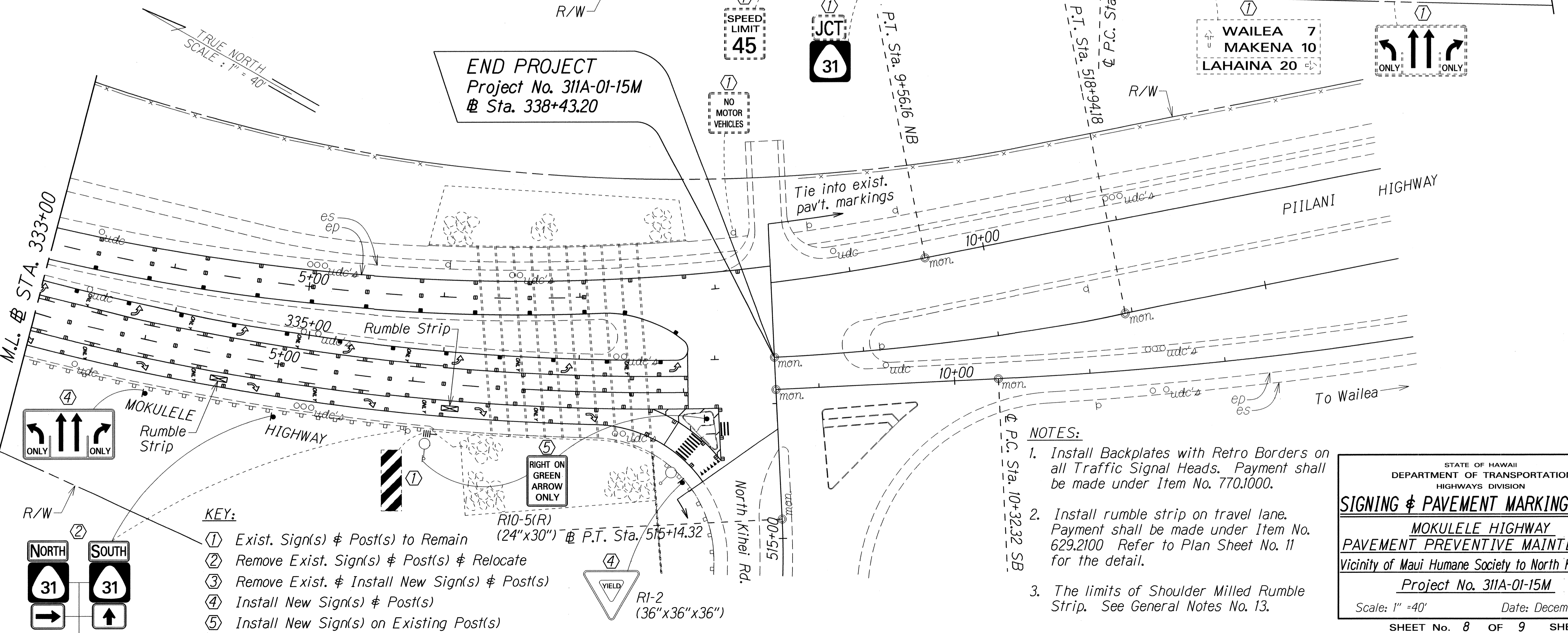
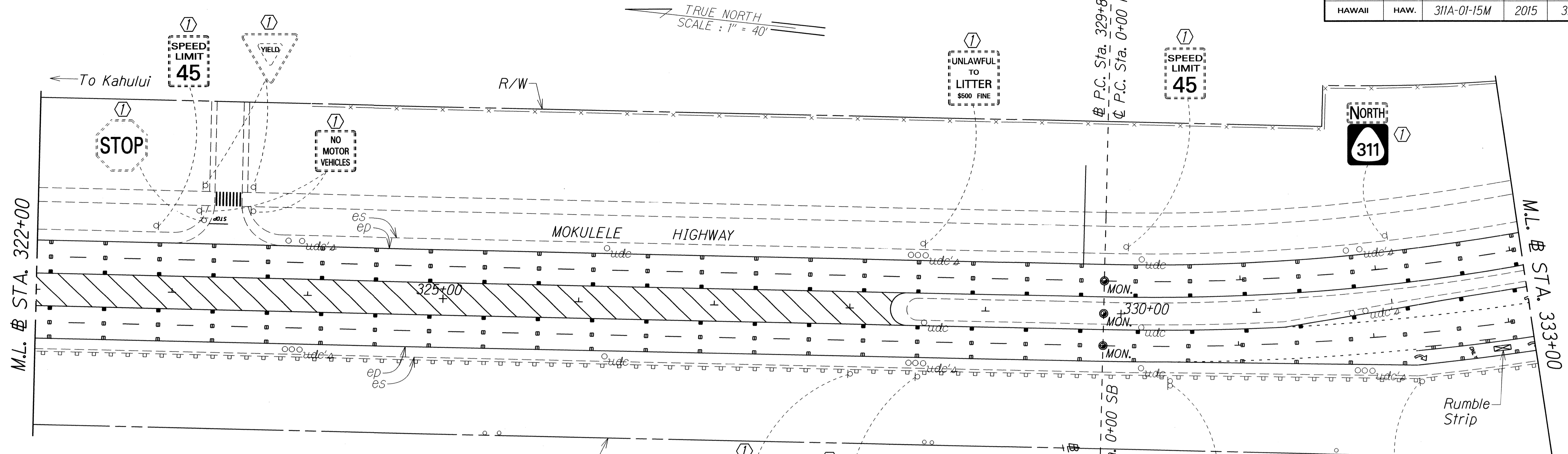
SIGNING & PAVEMENT MARKING PLANS

MOKULELE HIGHWAY
PAVEMENT PREVENTIVE MAINTENANCE
 Vicinity of Maui Humane Society to North Kihei Road
 Project No. 311A-01-15M

Scale: 1" = 40' Date: December, 2014

SHEET No. 7 OF 9 SHEETS

FED. ROAD DIST. NO.	STATE	PROJ. NO.	FISCAL YEAR	SHEET NO.	TOTAL SHEETS
HAWAII	HAW.	311A-01-15M	2015	32	33



END PROJECT
Project No. 311A-01-15M
Sta. 338+43.20

- NOTES:**
1. Install Backplates with Retro Borders on all Traffic Signal Heads. Payment shall be made under Item No. 770.1000.
 2. Install rumble strip on travel lane. Payment shall be made under Item No. 629.2100 Refer to Plan Sheet No. 11 for the detail.
 3. The limits of Shoulder Milled Rumble Strip. See General Notes No. 13.

- KEY:**
- 1 Exist. Sign(s) & Post(s) to Remain
 - 2 Remove Exist. Sign(s) & Post(s) & Relocate
 - 3 Remove Exist. & Install New Sign(s) & Post(s)
 - 4 Install New Sign(s) & Post(s)
 - 5 Install New Sign(s) on Existing Post(s)

DESIGNED BY	DATE
DRAWN BY	
CHECKED BY	
DATE	

STATE OF HAWAII
DEPARTMENT OF TRANSPORTATION
HIGHWAYS DIVISION

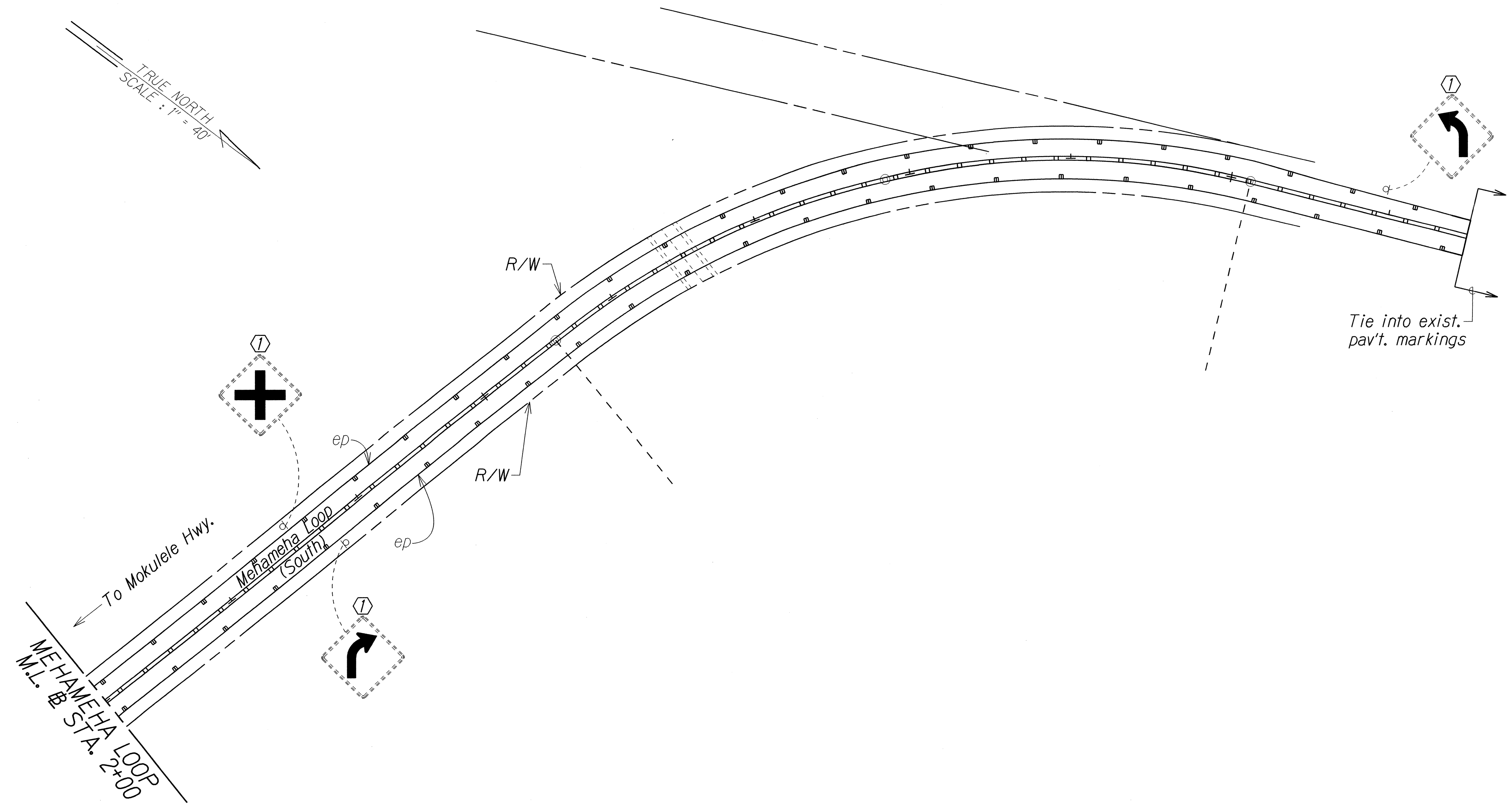
SIGNING & PAVEMENT MARKING PLANS

MOKULELE HIGHWAY
PAVEMENT PREVENTIVE MAINTENANCE
Vicinity of Maui Humane Society to North Kihei Road
Project No. 311A-01-15M

Scale: 1" = 40' Date: December, 2014

SHEET No. 8 OF 9 SHEETS

FED. ROAD DIST. NO.	STATE	PROJ. NO.	FISCAL YEAR	SHEET NO.	TOTAL SHEETS
HAWAII	HAW.	311A-01-15M	2015	33	33



DESIGNED BY	DATE
DRAWN BY	
CHECKED BY	
QUANTITIES BY	
NOTED BY	
ORIGINAL PLAN	

- KEY:**
- ① Exist. Sign(s) & Post(s) to Remain
 - ② Remove Exist. Sign(s) & Post(s)
 - ③ Remove Exist. & Install New Sign(s) & Post(s)
 - ④ Install New Sign(s) & Post(s)

STATE OF HAWAII
DEPARTMENT OF TRANSPORTATION
HIGHWAYS DIVISION

SIGNING & PAVEMENT MARKING PLANS

MOKULELE HIGHWAY
PAVEMENT PREVENTIVE MAINTENANCE
Vicinity of Maui Humane Society to North Kihei Road
Project No. 311A-01-15M

Scale: 1" = 40' Date: December, 2014

SHEET No. 9 OF 9 SHEETS