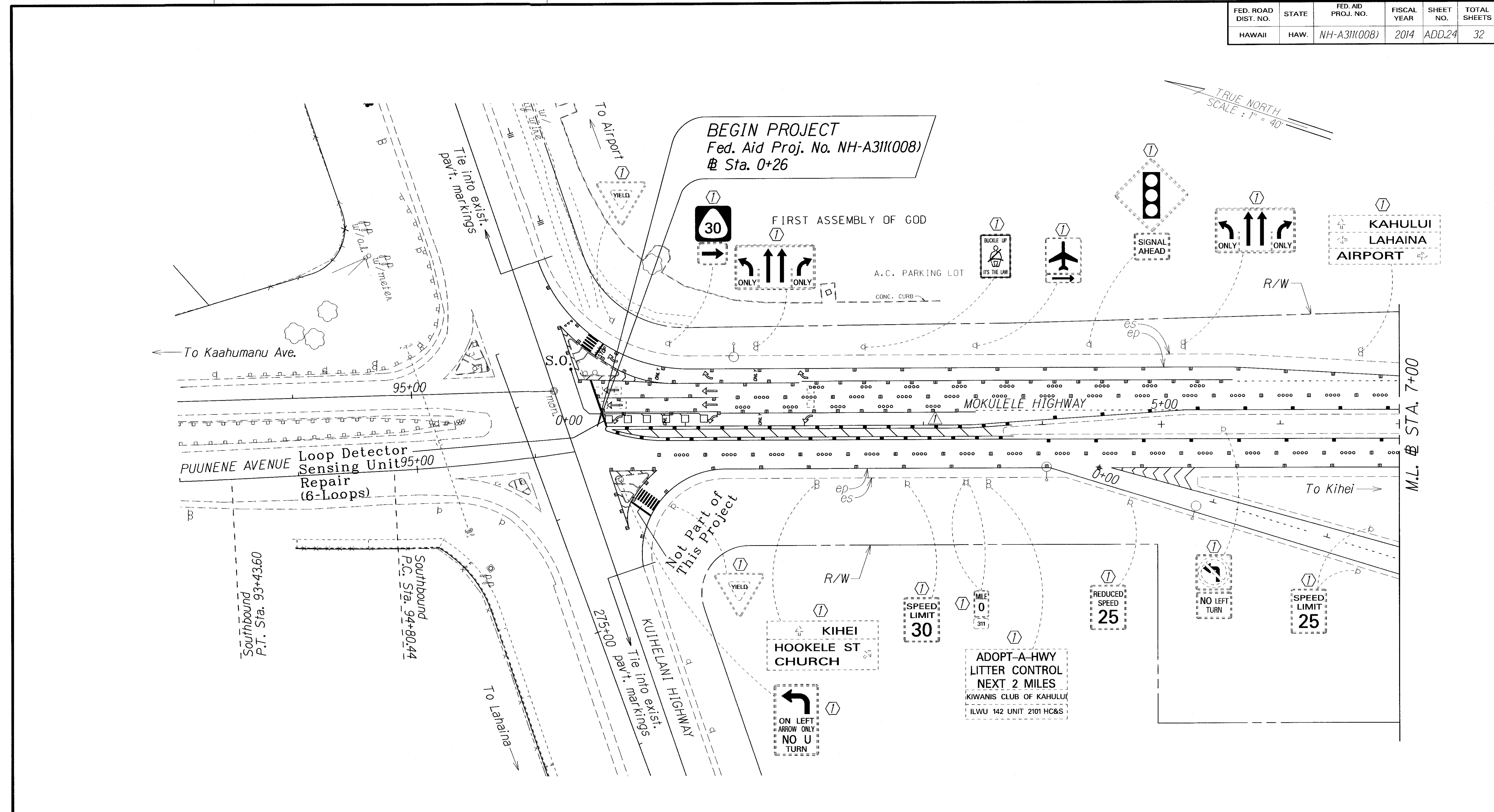


FED. ROAD DIST. NO.	STATE	FED. AID PROJ. NO.	FISCAL YEAR	SHEET NO.	TOTAL SHEETS
HAWAII	HAW.	NH-A311(008)	2014	ADD.24	32



- KEY:**
- ① Exist. Sign(s) & Post(s) to Remain
  - ② Remove Exist. Sign(s) & Post(s)
  - ③ Remove Exist. & Install New Sign(s) & Post(s)
  - ④ New Sign(s) & Post(s) to be installed by others under a different project
- S.O.- Stub Out For Traffic Loops

LEGEND FOR AS-BUILT POSTINGS	
	Squiggly line for as-built deletion
	Double line for as-built deletion
Roadway	Text for as-built posting

6-6-14 Added pavement arrow.

DATE	REVISION

STATE OF HAWAII  
DEPARTMENT OF TRANSPORTATION  
HIGHWAYS DIVISION

**SIGNING & PAVEMENT MARKING PLAN**

RTE 311 MOKULELE HIGHWAY  
PAVEMENT PREVENTIVE MAINTENANCE  
Kuihelani Highway to Maui Humane Society  
Federal-Aid Project No. NH-A311(008)

Scale: 1" = 40'      Date: January, 2014

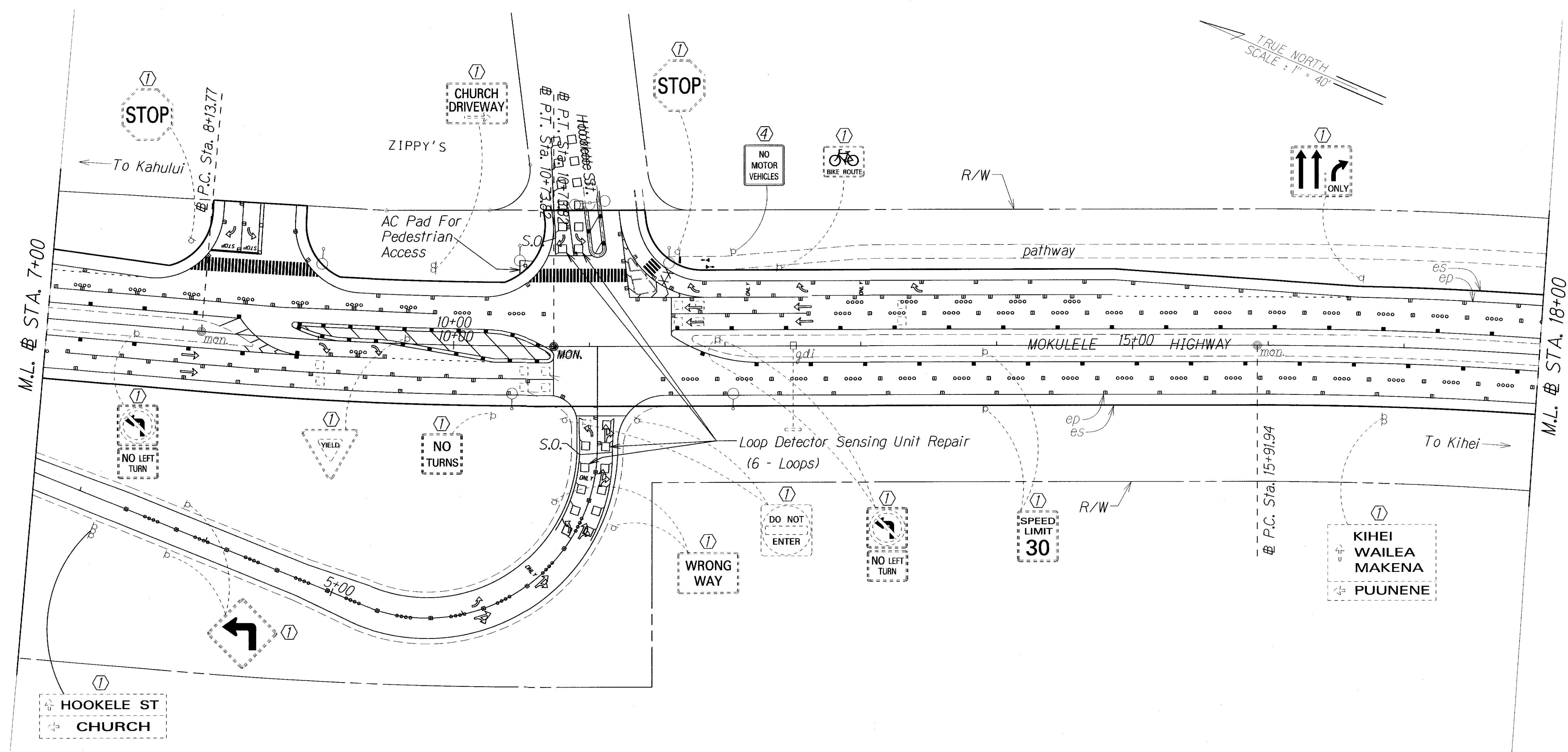
SHEET No. 1 OF 9 SHEETS

SURVEY PLOTTED BY	DATE
DRAWN BY	
TRACED BY	
DESIGNED BY	
QUANTITIES BY	
CHECKED BY	
ORIGINAL PLAN	
NOTE BOOK	
NO.	

"AS-BUILT"

ADD. 24

FED. ROAD DIST. NO.	STATE	FED. AID PROJ. NO.	FISCAL YEAR	SHEET NO.	TOTAL SHEETS
HAWAII	HAW.	NH-A311(008)	2014	25	32



SURVEY PLOTTED BY	DATE
DRAWN BY	
DESIGNED BY	
QUANTITIES BY	
CHECKED BY	
ORIGINAL PLAN	
NOTE BOOK	
N.	

LEGEND FOR AS-BUILT POSTINGS	
	Squiggly line for as-built deletion
	Double line for as-built deletion
Roadway	Text for as-built posting

- KEY: S.O. Stub Out For Traffic Loops
- ① Exist. Sign(s) & Post(s) to Remain
  - ② Remove Exist. Sign(s) & Post(s)
  - ③ Remove Exist. & Install New Sign(s) & Post(s)
  - ④ New Sign(s) & Post(s) to be installed by others under a different project

STATE OF HAWAII  
DEPARTMENT OF TRANSPORTATION  
HIGHWAYS DIVISION

**SIGNING & PAVEMENT MARKING PLAN**

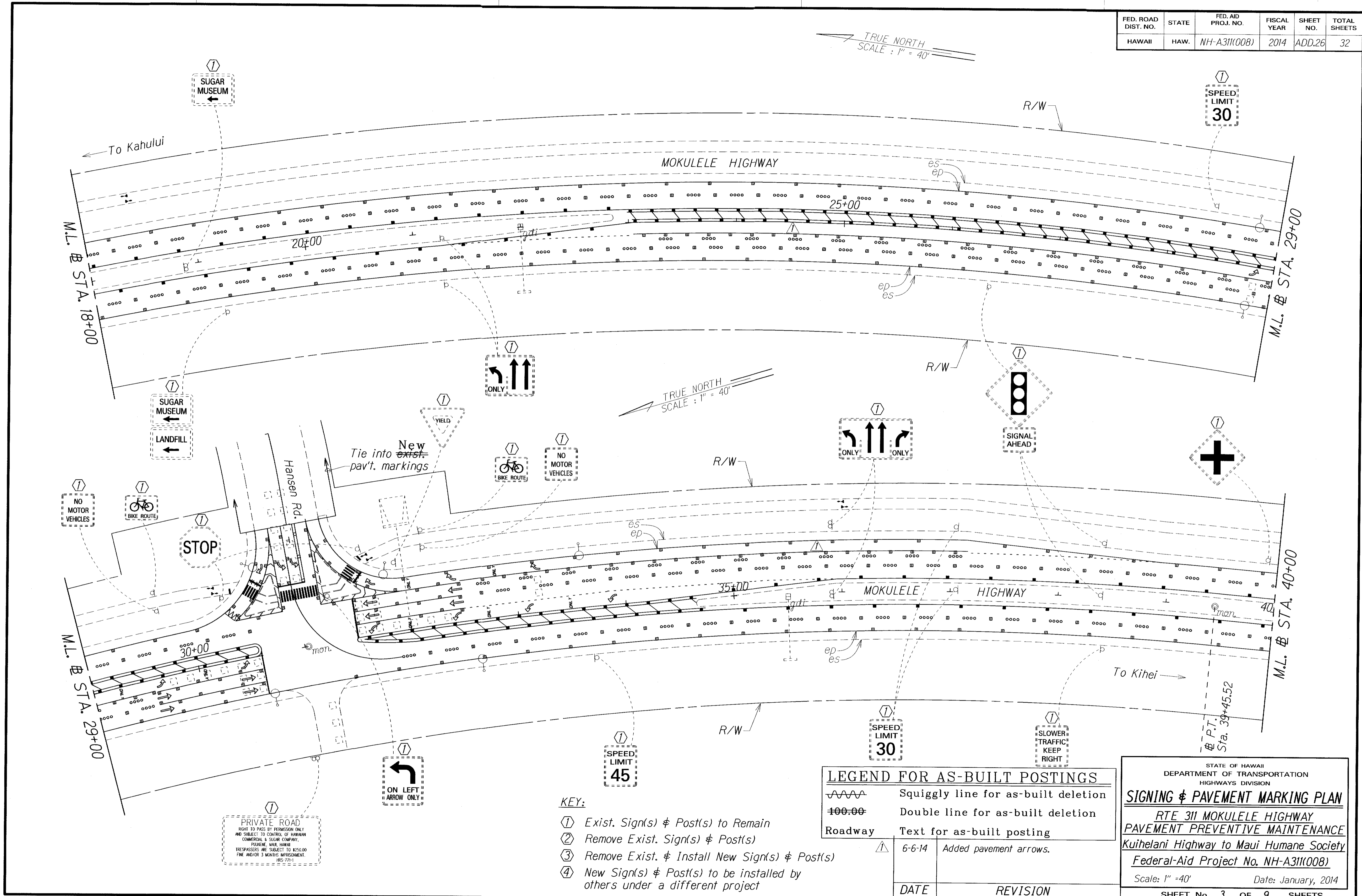
RTE 311 MOKULELE HIGHWAY  
PAVEMENT PREVENTIVE MAINTENANCE  
Kuihelani Highway to Maui Humane Society  
Federal-Aid Project No. NH-A311(008)

Scale: 1" = 40'      Date: January, 2014

SHEET No. 2 OF 9 SHEETS

"AS-BUILT"

FED. ROAD DIST. NO.	STATE	FED. AID PROJ. NO.	FISCAL YEAR	SHEET NO.	TOTAL SHEETS
HAWAII	HAW.	NH-A311(008)	2014	ADD.26	32



LEGEND FOR AS-BUILT POSTINGS	
	Squiggly line for as-built deletion
	Double line for as-built deletion
Roadway	Text for as-built posting
	6-6-14 Added pavement arrows.
DATE	REVISION

- KEY:**
- ① Exist. Sign(s) & Post(s) to Remain
  - ② Remove Exist. Sign(s) & Post(s)
  - ③ Remove Exist. & Install New Sign(s) & Post(s)
  - ④ New Sign(s) & Post(s) to be installed by others under a different project

PRIVATE ROAD  
 RIGHT TO PASS BY PEDESTRIAN ONLY  
 AND SUBJECT TO CONTROL OF HAWAIIAN  
 COMMERCIAL & SUGAR COMPANY,  
 PUEHELE, MAUI, HAWAII  
 TRESPASSERS ARE SUBJECT TO \$250.00  
 FINE AND/OR 3 MONTHS IMPRISONMENT.  
 HSC 7701

DATE \_\_\_\_\_  
 SURVEY PLOTTED BY \_\_\_\_\_  
 ORIGINAL PLAN DRAWN BY \_\_\_\_\_  
 NOTE BOOK DESIGNED BY \_\_\_\_\_  
 NO. \_\_\_\_\_ CHECKED BY \_\_\_\_\_

STATE OF HAWAII  
 DEPARTMENT OF TRANSPORTATION  
 HIGHWAYS DIVISION

**SIGNING & PAVEMENT MARKING PLAN**

RTE 311 MOKULELE HIGHWAY  
 PAVEMENT PREVENTIVE MAINTENANCE  
 Kuihelani Highway to Maui Humane Society  
 Federal-Aid Project No. NH-A311(008)

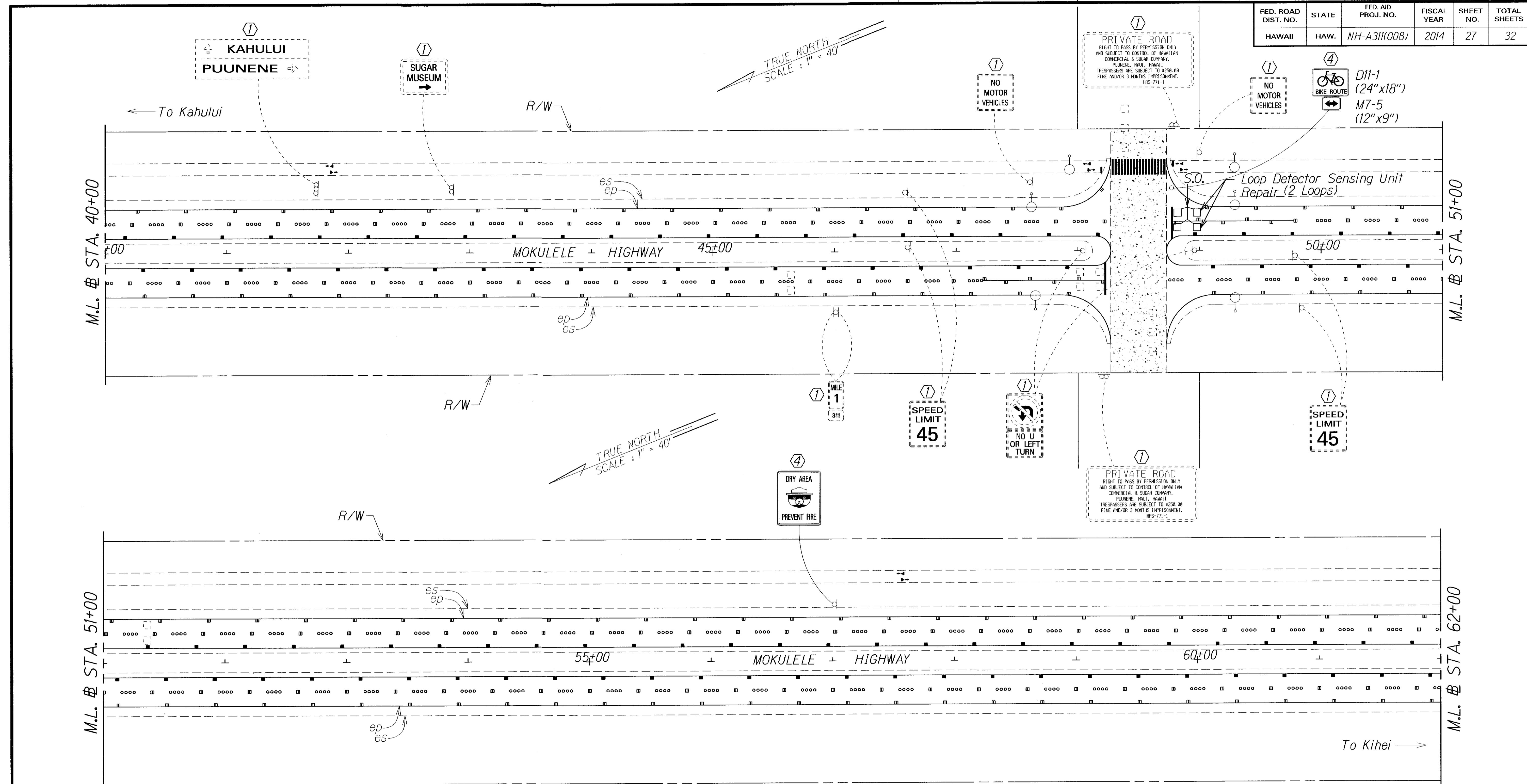
Scale: 1" = 40' Date: January, 2014

SHEET No. 3 OF 9 SHEETS

"AS-BUILT"

ADD. 26

FED. ROAD DIST. NO.	STATE	FED. AID PROJ. NO.	FISCAL YEAR	SHEET NO.	TOTAL SHEETS
HAWAII	HAW.	NH-A311(008)	2014	27	32



SURVEY PLOTTED BY	DATE
DRAWN BY	
DESIGNED BY	
QUANTITIES BY	
CHECKED BY	
ORIGINAL PLAN	
NOTE BOOK	
N.	

LEGEND FOR AS-BUILT POSTINGS	
	Squiggly line for as-built deletion
	Double line for as-built deletion
Roadway	Text for as-built posting

- KEY: S.O. Stub Out For Traffic Loops
- ① Exist. Sign(s) & Post(s) to Remain
  - ② Remove Exist. Sign(s) & Post(s)
  - ③ Remove Exist. & Install New Sign(s) & Post(s)
  - ④ New Sign(s) & Post(s) to be installed by others under a different project

STATE OF HAWAII  
DEPARTMENT OF TRANSPORTATION  
HIGHWAYS DIVISION

**SIGNING & PAVEMENT MARKING PLAN**

**RTE 311 MOKULELE HIGHWAY**  
**PAVEMENT PREVENTIVE MAINTENANCE**  
**Kuihelani Highway to Maui Humane Society**  
**Federal-Aid Project No. NH-A311(008)**

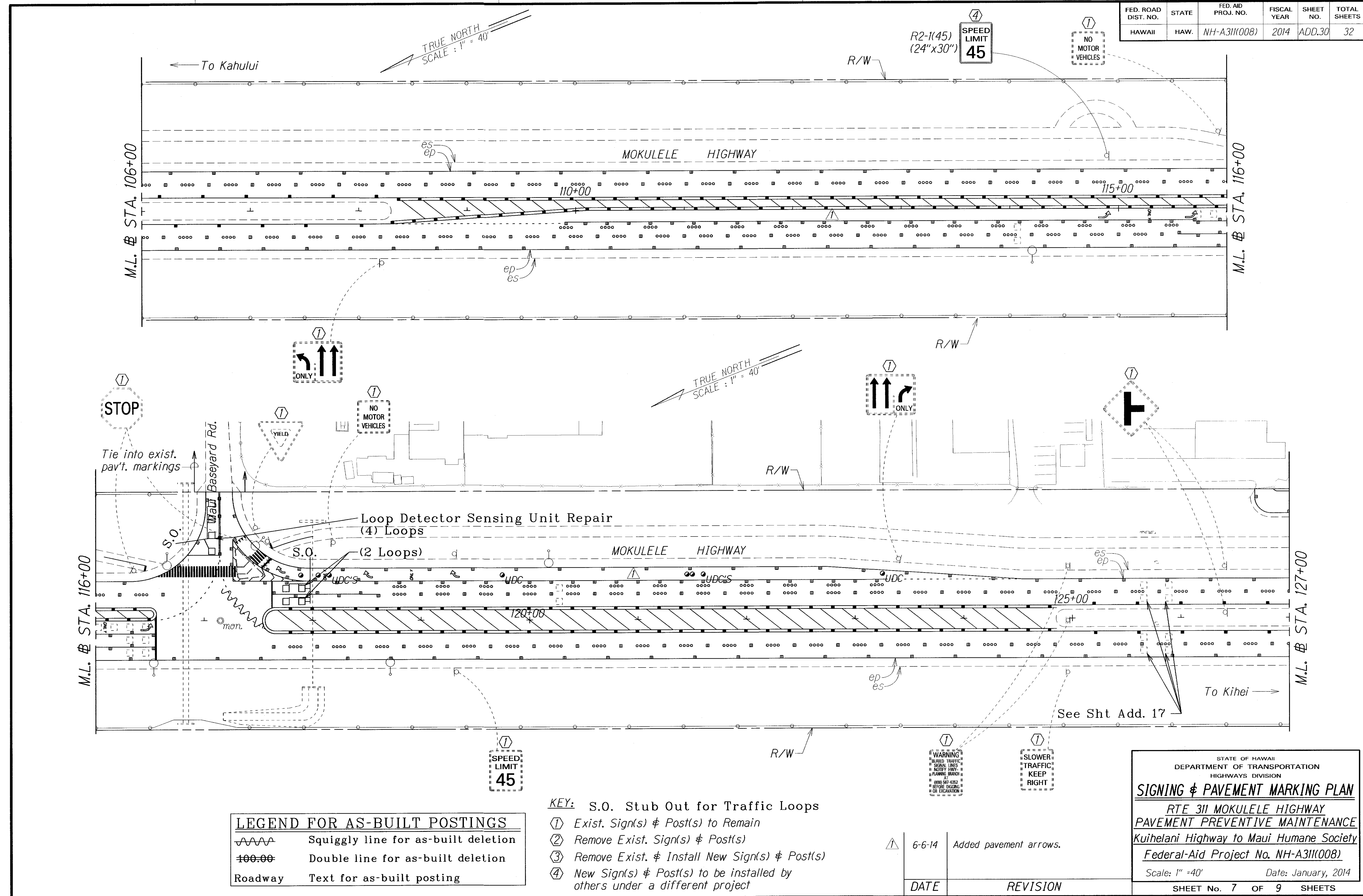
Scale: 1" = 40'      Date: January, 2014

"AS-BUILT"





FED. ROAD DIST. NO.	STATE	FED. AID PROJ. NO.	FISCAL YEAR	SHEET NO.	TOTAL SHEETS
HAWAII	HAW.	NH-A311(008)	2014	ADD.30	32



SURVEY PLOTTED BY	DATE
DRAWN BY	
TRACED BY	
QUANTITIES BY	
CHECKED BY	
ORIGINAL PLAN	
NOTE BOOK	
NO.	

LEGEND FOR AS-BUILT POSTINGS	
	Squiggly line for as-built deletion
	Double line for as-built deletion
Roadway	Text for as-built posting

- KEY:** S.O. Stub Out for Traffic Loops
- ① Exist. Sign(s) & Post(s) to Remain
  - ② Remove Exist. Sign(s) & Post(s)
  - ③ Remove Exist. & Install New Sign(s) & Post(s)
  - ④ New Sign(s) & Post(s) to be installed by others under a different project

	6-6-14	Added pavement arrows.
--	--------	------------------------

DATE	REVISION
------	----------

STATE OF HAWAII  
DEPARTMENT OF TRANSPORTATION  
HIGHWAYS DIVISION

**SIGNING & PAVEMENT MARKING PLAN**

RTE 311 MOKULELE HIGHWAY  
PAVEMENT PREVENTIVE MAINTENANCE  
Kuihelani Highway to Maui Humane Society  
Federal-Aid Project No. NH-A311(008)

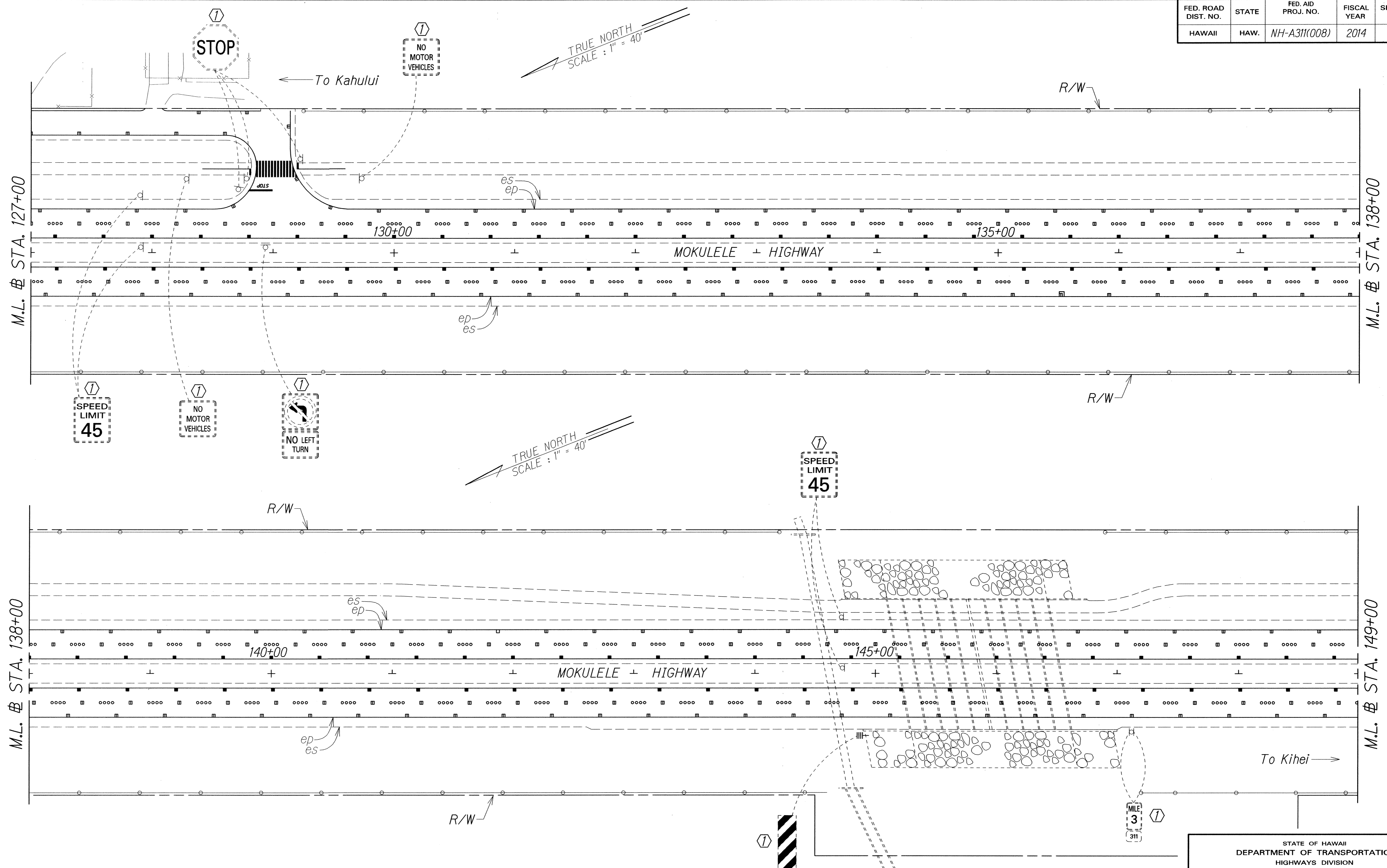
Scale: 1" = 40'      Date: January, 2014

SHEET No. 7 OF 9 SHEETS

"AS-BUILT"

ADD. 30

FED. ROAD DIST. NO.	STATE	FED. AID PROJ. NO.	FISCAL YEAR	SHEET NO.	TOTAL SHEETS
HAWAII	HAW.	NH-A311(008)	2014	31	32



SURVEY PLOTTED BY	DATE
DRAWN BY	
CHECKED BY	
NOTE BOOK	
QUANTITIES BY	
CHECKED BY	

- KEY:**
- ① Exist. Sign(s) & Post(s) to Remain
  - ② Remove Exist. Sign(s) & Post(s)
  - ③ Remove Exist. & Install New Sign(s) & Post(s)
  - ④ New Sign(s) & Post(s) to be installed by others under a different project

STATE OF HAWAII  
DEPARTMENT OF TRANSPORTATION  
HIGHWAYS DIVISION

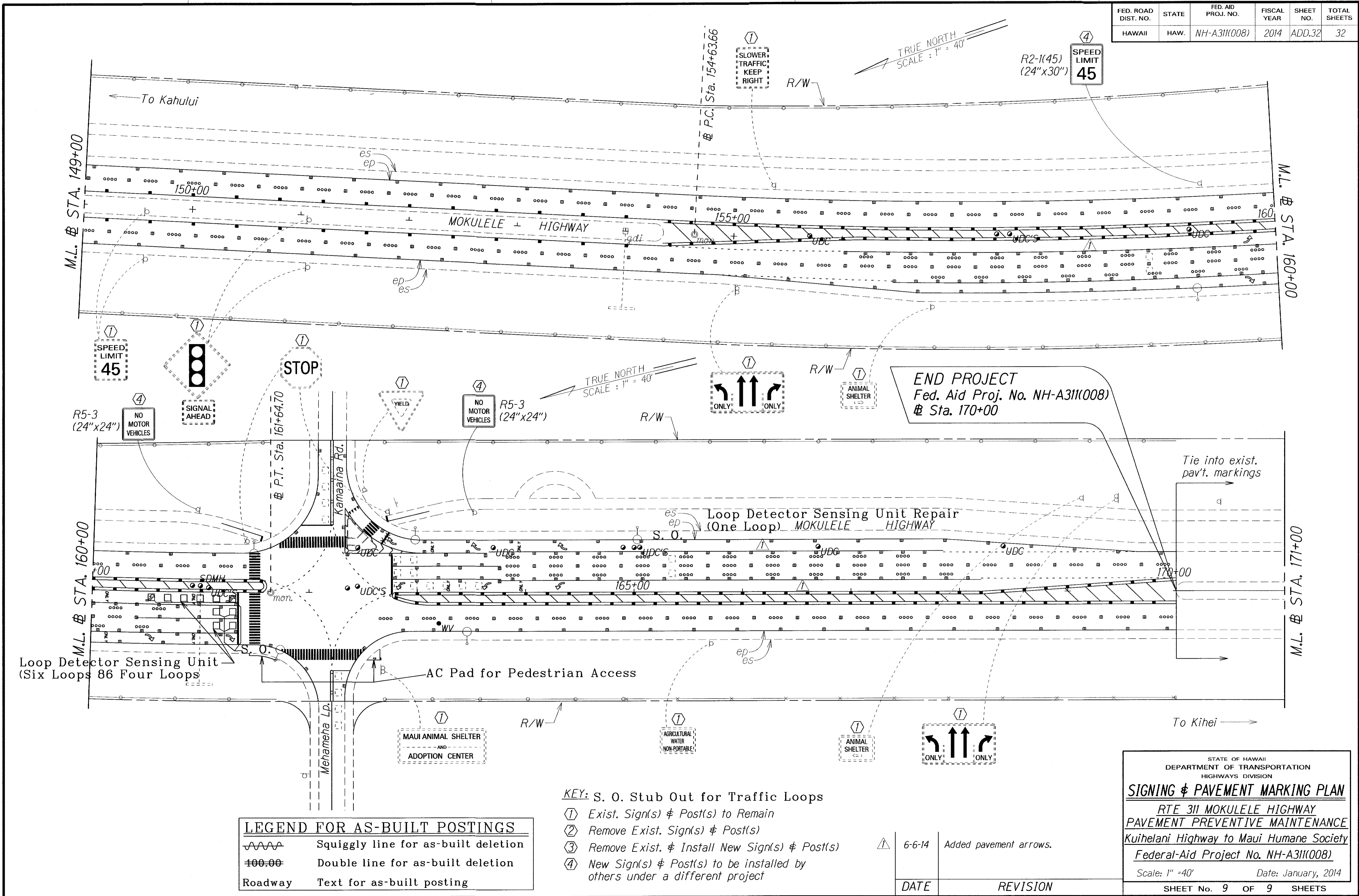
**SIGNING & PAVEMENT MARKING PLAN**

RTE 311 MOKULELE HIGHWAY  
PAVEMENT PREVENTIVE MAINTENANCE  
Kuihelani Highway to Maui Humane Society  
Federal-Aid Project No. NH-A311(008)

Scale: 1" = 40'      Date: January, 2014

SHEET No. 8 OF 9 SHEETS

FED. ROAD DIST. NO.	STATE	FED. AID PROJ. NO.	FISCAL YEAR	SHEET NO.	TOTAL SHEETS
HAWAII	HAW.	NH-A311(008)	2014	ADD.32	32



SURVEY PLOTTED BY	DATE
DRAWN BY	
TRACED BY	
NOTE BOOK	
QUANTITIES BY	
CHECKED BY	

LEGEND FOR AS-BUILT POSTINGS	
	Squiggly line for as-built deletion
	Double line for as-built deletion
	Text for as-built posting

- KEY:** S. O. Stub Out for Traffic Loops
- ① Exist. Sign(s) & Post(s) to Remain
  - ② Remove Exist. Sign(s) & Post(s)
  - ③ Remove Exist. & Install New Sign(s) & Post(s)
  - ④ New Sign(s) & Post(s) to be installed by others under a different project

	6-6-14	Added pavement arrows.
DATE	REVISION	

STATE OF HAWAII  
DEPARTMENT OF TRANSPORTATION  
HIGHWAYS DIVISION

**SIGNING & PAVEMENT MARKING PLAN**

RTE 311 MOKULELE HIGHWAY  
PAVEMENT PREVENTIVE MAINTENANCE  
Kuihelani Highway to Maui Humane Society  
Federal-Aid Project No. NH-A311(008)

Scale: 1" = 40'      Date: January, 2014

SHEET No. 9 OF 9 SHEETS