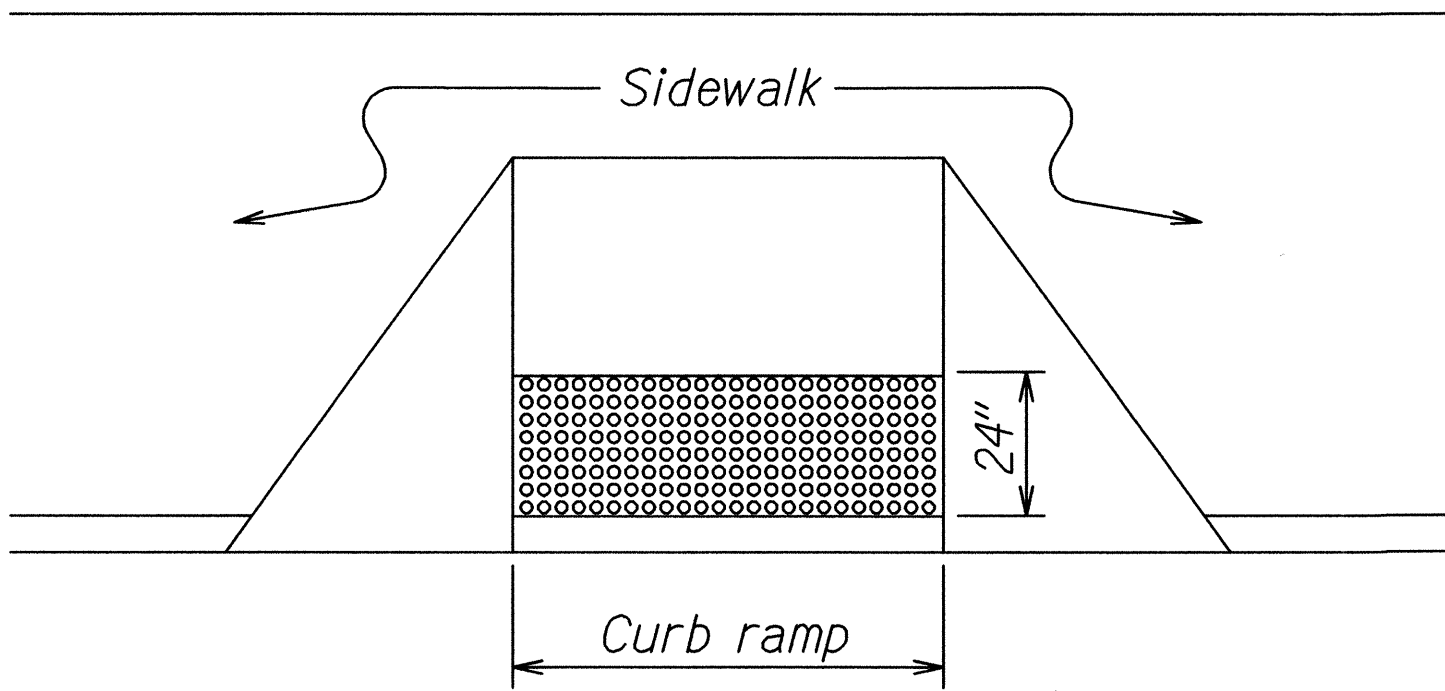
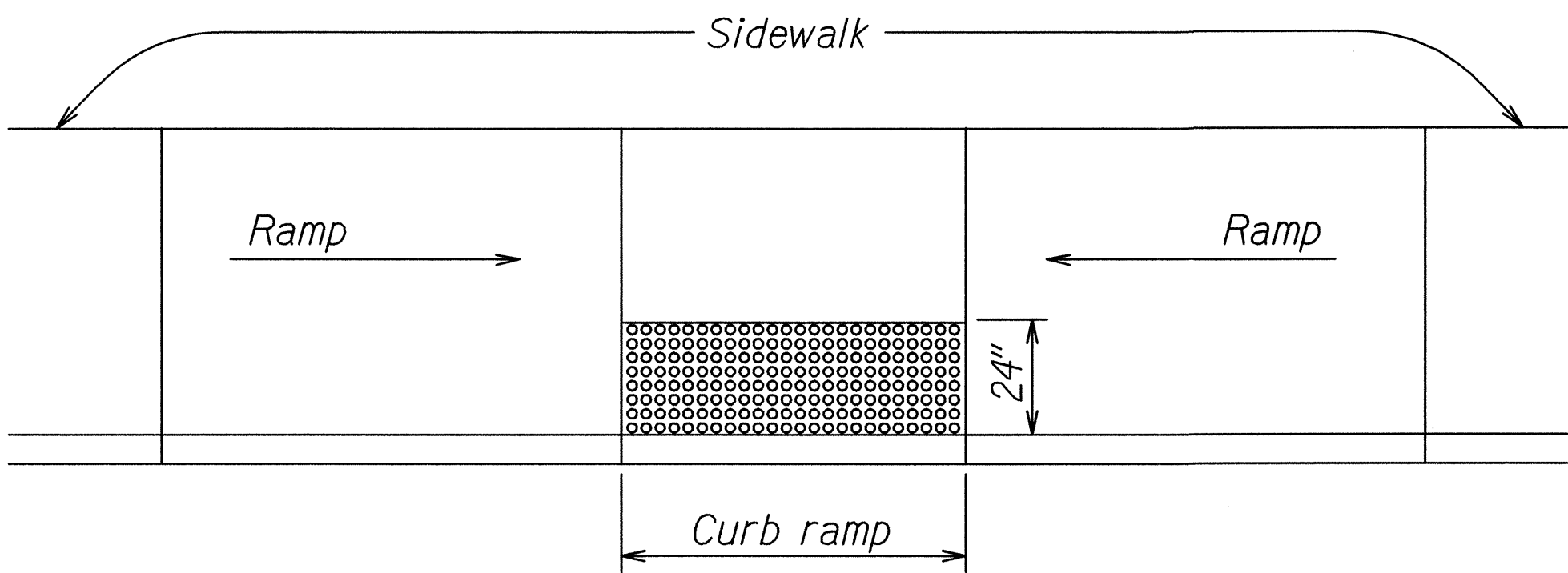


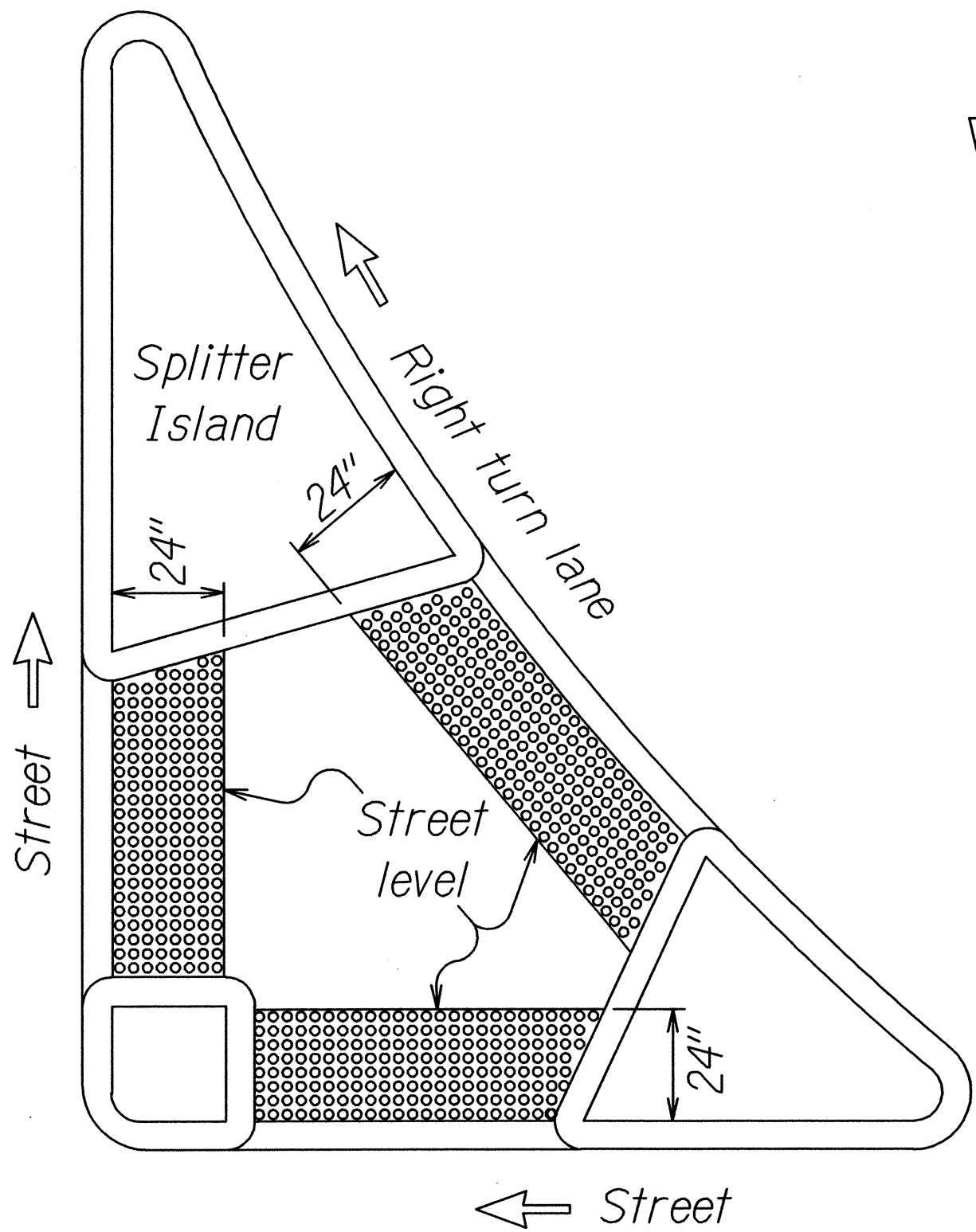
FED. ROAD DIST. NO.	STATE	FED. AID PROJ. NO.	FISCAL YEAR	SHEET NO.	TOTAL SHEETS
HAWAII	HAW.	NH-A311(008)	2014	ADD.10	32



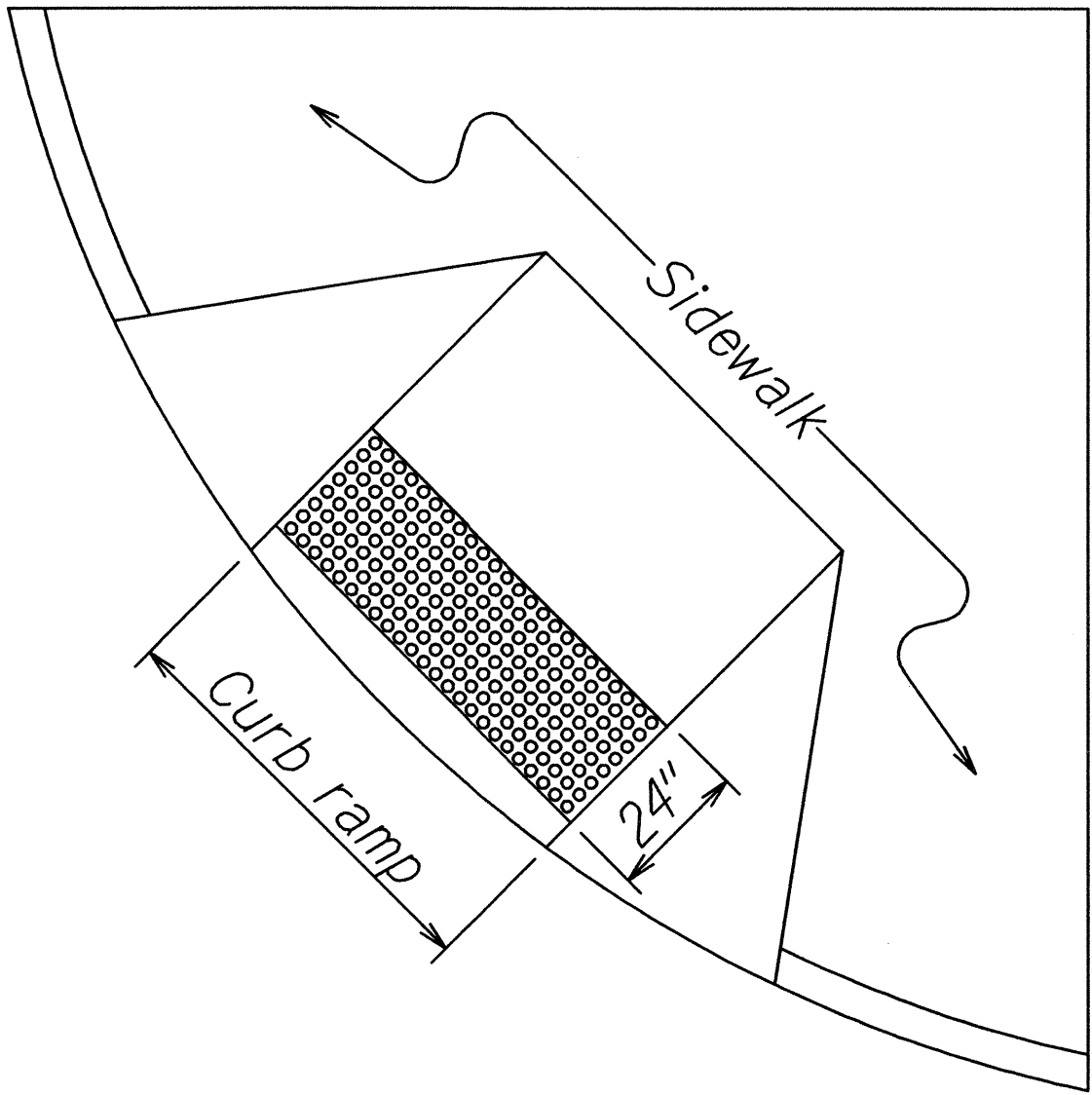
DETECTABLE WARNING AT CURB RAMP



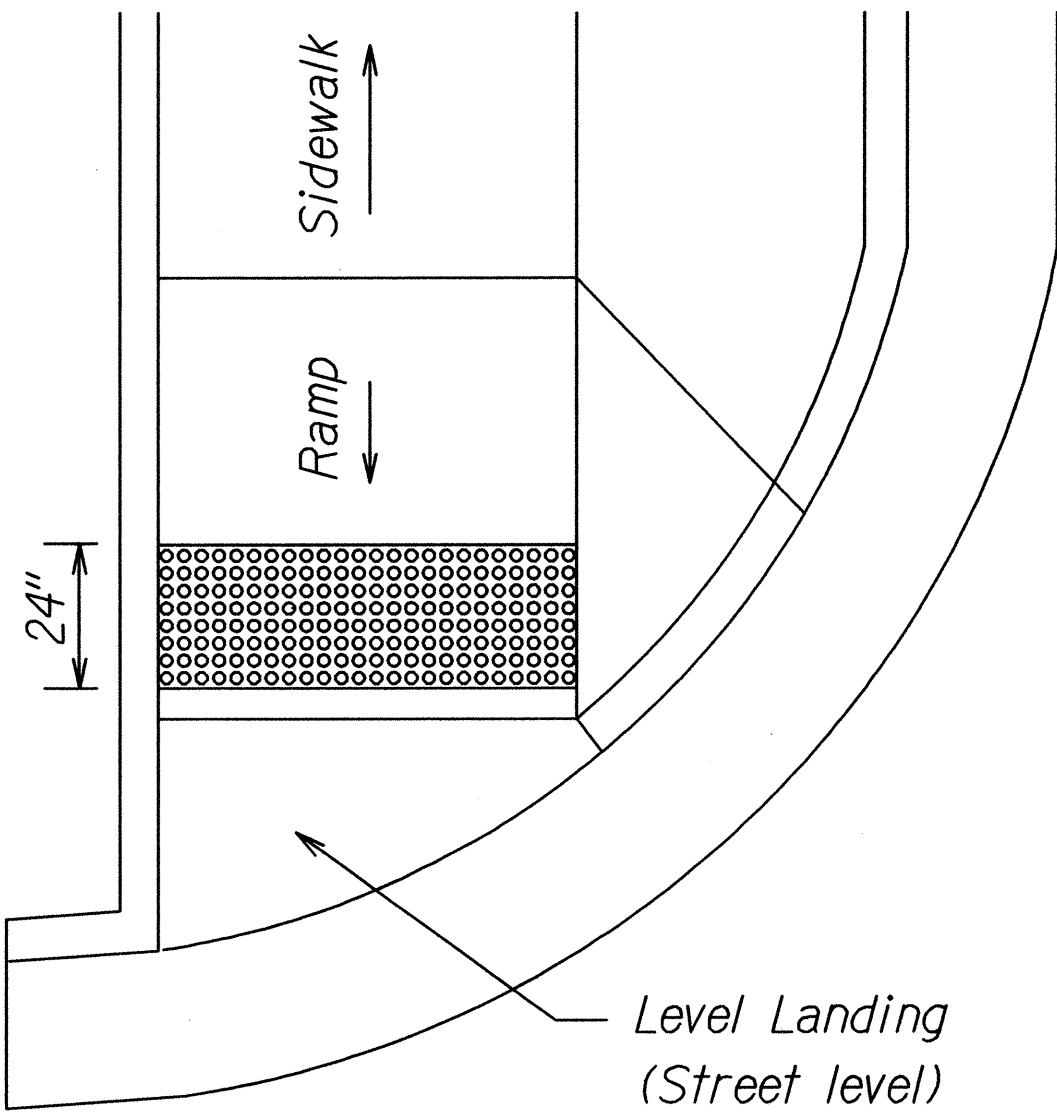
TRANSITION RAMP WITH DETECTABLE WARNING



REFUGE ISLAND WITH DETECTABLE WARNING



SHARED CURB RAMP WITH DETECTABLE WARNING



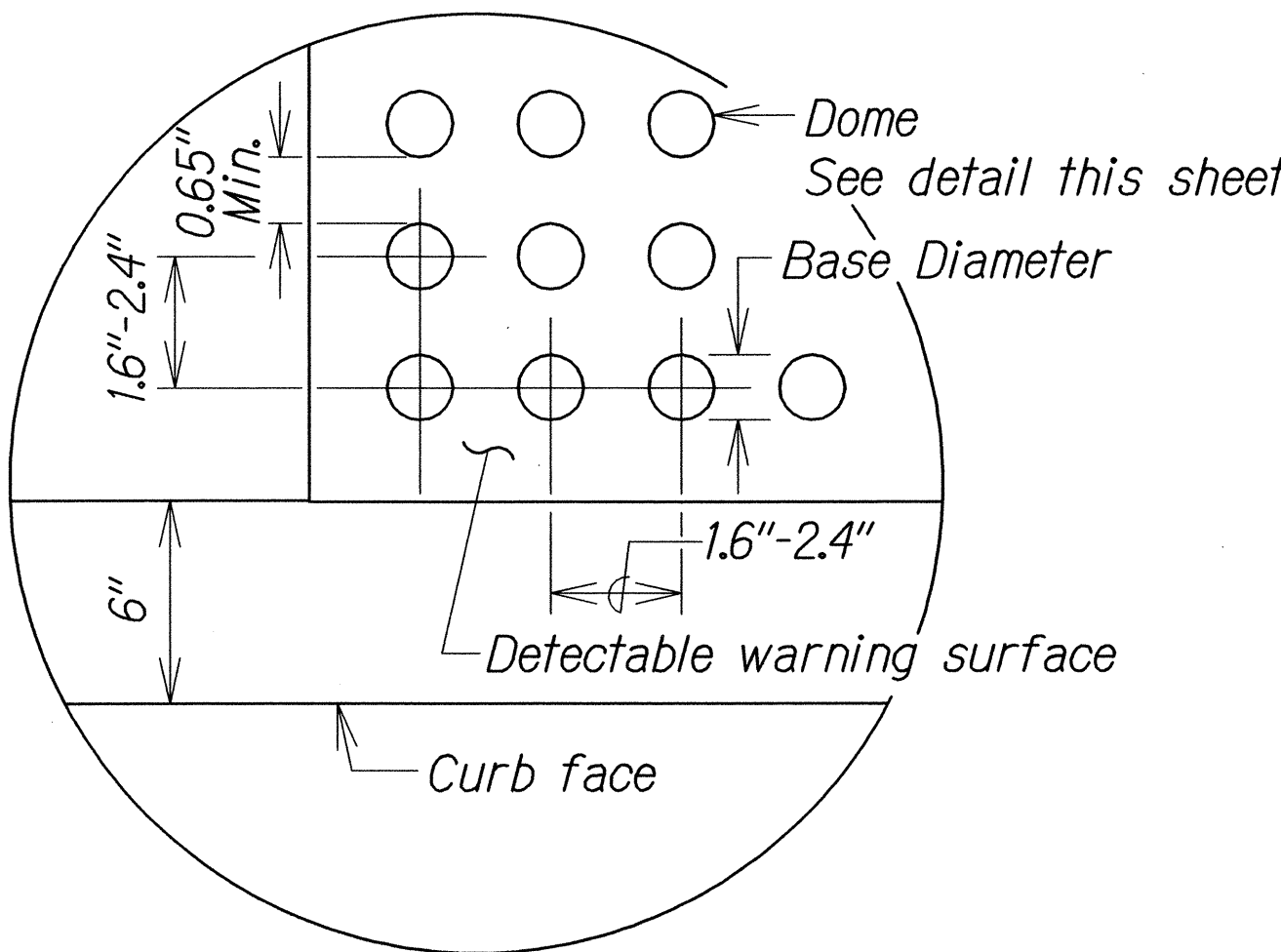
△ END OF SIDEWALK CURB RAMP OR BIKE PATH/WALKWAY WITH DETECTABLE WARNING

# TYPICAL INSTALLATION OF DETECTABLE WARNINGS

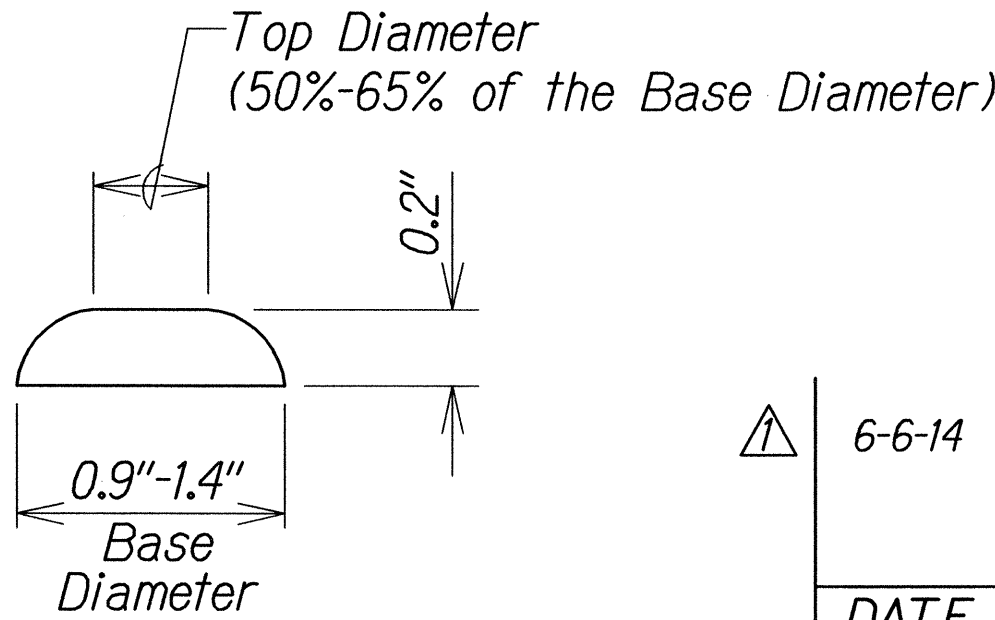
Not to Scale

## NOTES:

1. Detectable warnings shall be 24 inches in the direction of travel and extend the full width of the curb ramp or flush surface (does not include flares).
2. Truncated domes shall have a diameter of 0.9 to 1.4 inch at the bottom, a diameter of 50%-65% of the base diameter at the top, a height of 0.2 inch and a center-to-center spacing of 1.6 to 2.4 inches measured along one side of a square arrangement.
3. Domes shall be aligned on a square grid in the predominant direction of travel to permit wheels to roll between the domes.
4. There shall be a minimum of 70 percent contrast in light reflectance between the detectable warning and an adjoining surface, or the detectable warning shall be "safety yellow".
5. The material used to provide visual contrast shall be an integral part of the detectable warning surface.
6. The detectable warning shall be located so that the edge nearest the curb line or other potential hazard is 6 to 8 inches from the curb line.



ENLARGEMENT



## DETECTABLE WARNING DETAIL

Not to Scale

△ 6-6-14	Revised Subtitle Detail.
DATE	REVISION
STATE OF HAWAII DEPARTMENT OF TRANSPORTATION HIGHWAYS DIVISION <b>DETECTABLE WARNING DETAILS</b> RTE 311 MOKULELE HIGHWAY PAVEMENT PREVENTIVE MAINTENANCE Kuihelani Highway to Maui Humane Society Federal-Aid Project No. NH-A311(008) Scale: As Noted Date: January, 2014	
SHEET No. 1 OF 1 SHEETS	

ORIGINAL PLAN	SURVEY PLOTTED BY	DATE
NOTE BOOK	DRAWN BY	
	DESIGNED BY	
	CHECKED BY	