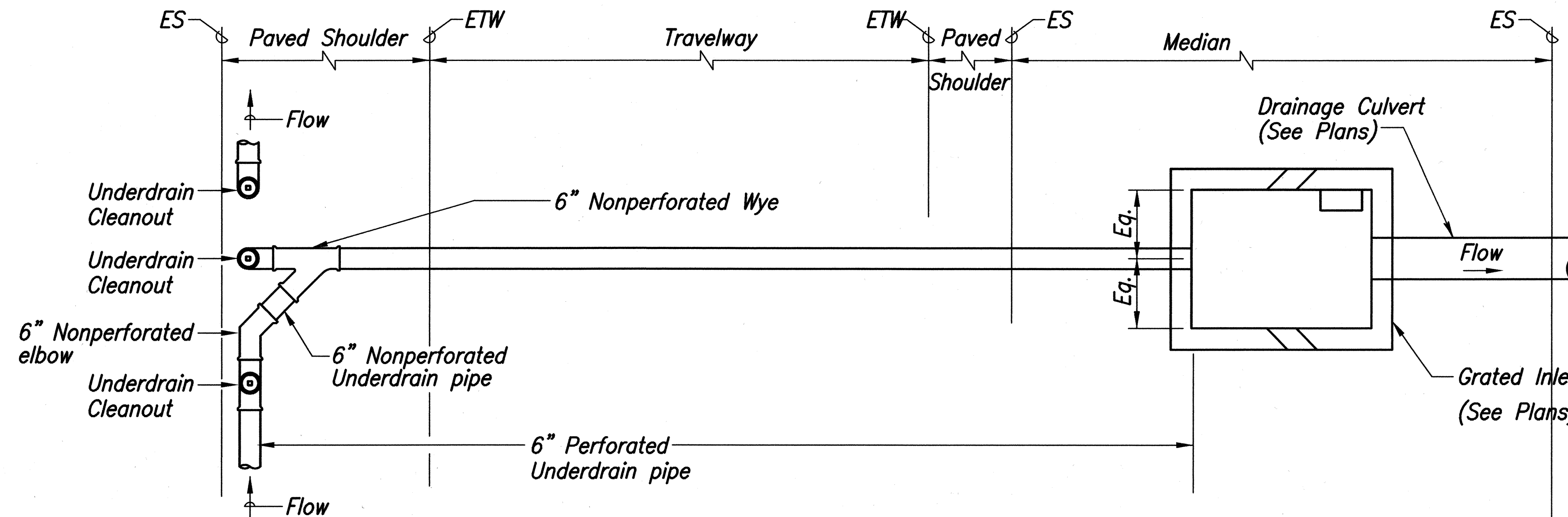
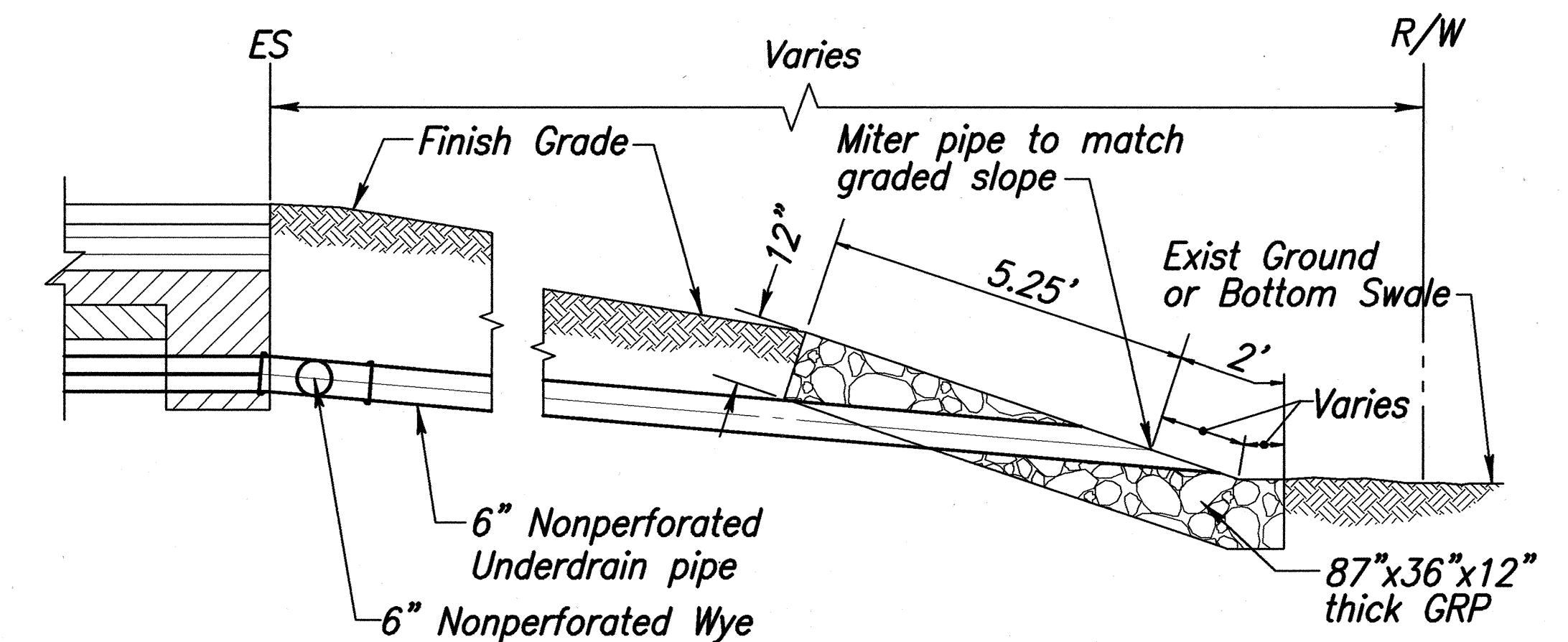


FED. ROAD DIST. NO.	STATE	FEDERAL - AID PROJ. NO.	FISCAL YEAR	SHEET NO.	TOTAL SHEETS
HAWAII	HAW.	NH-0311(5)	2003	76	189



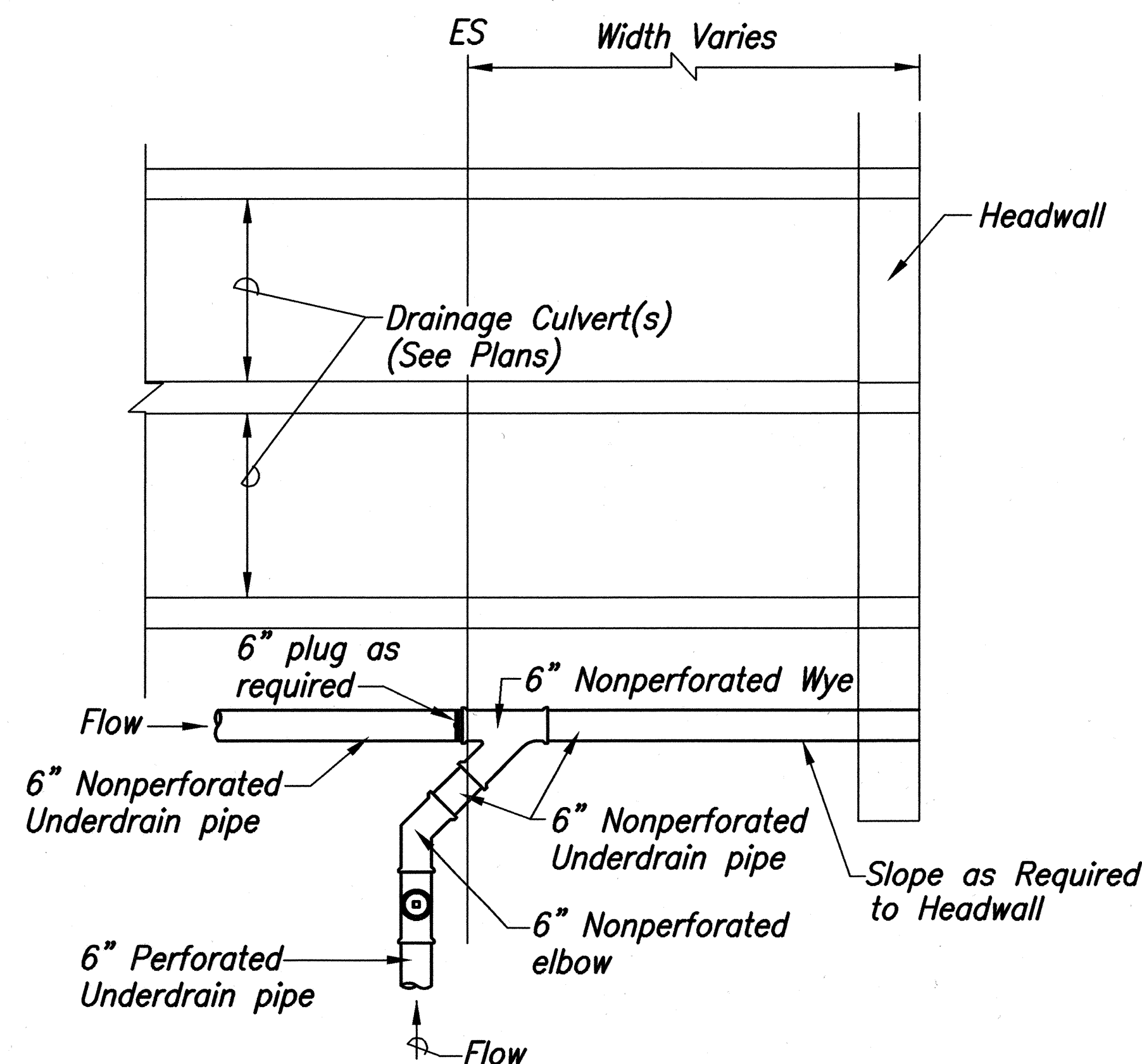
CONNECTION TO GRATED DROP INLET

Scale: 1/2"=1'-0"



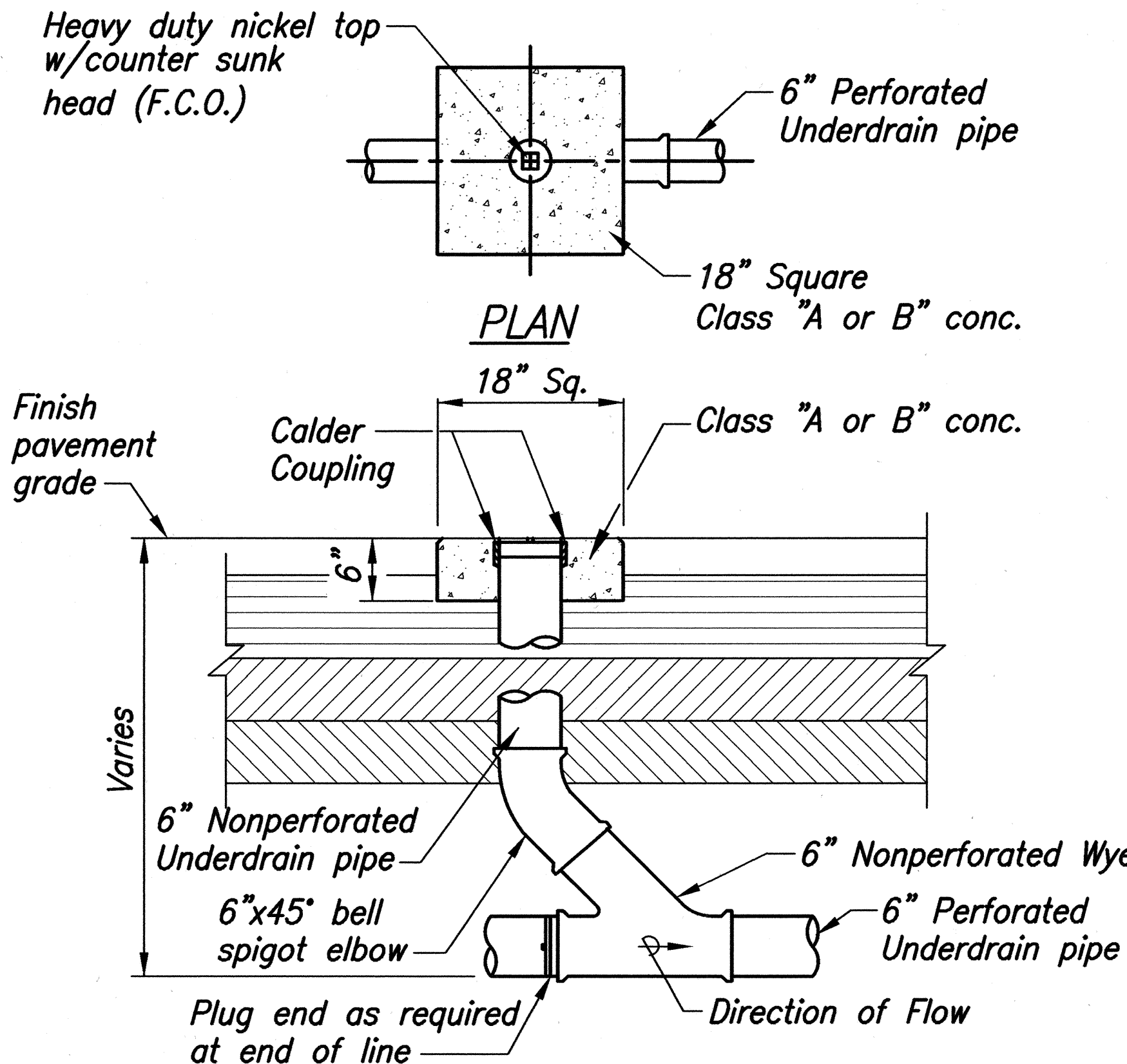
6" UNDERDRAIN OUTLET

Scale: 1/2"=1'-0"



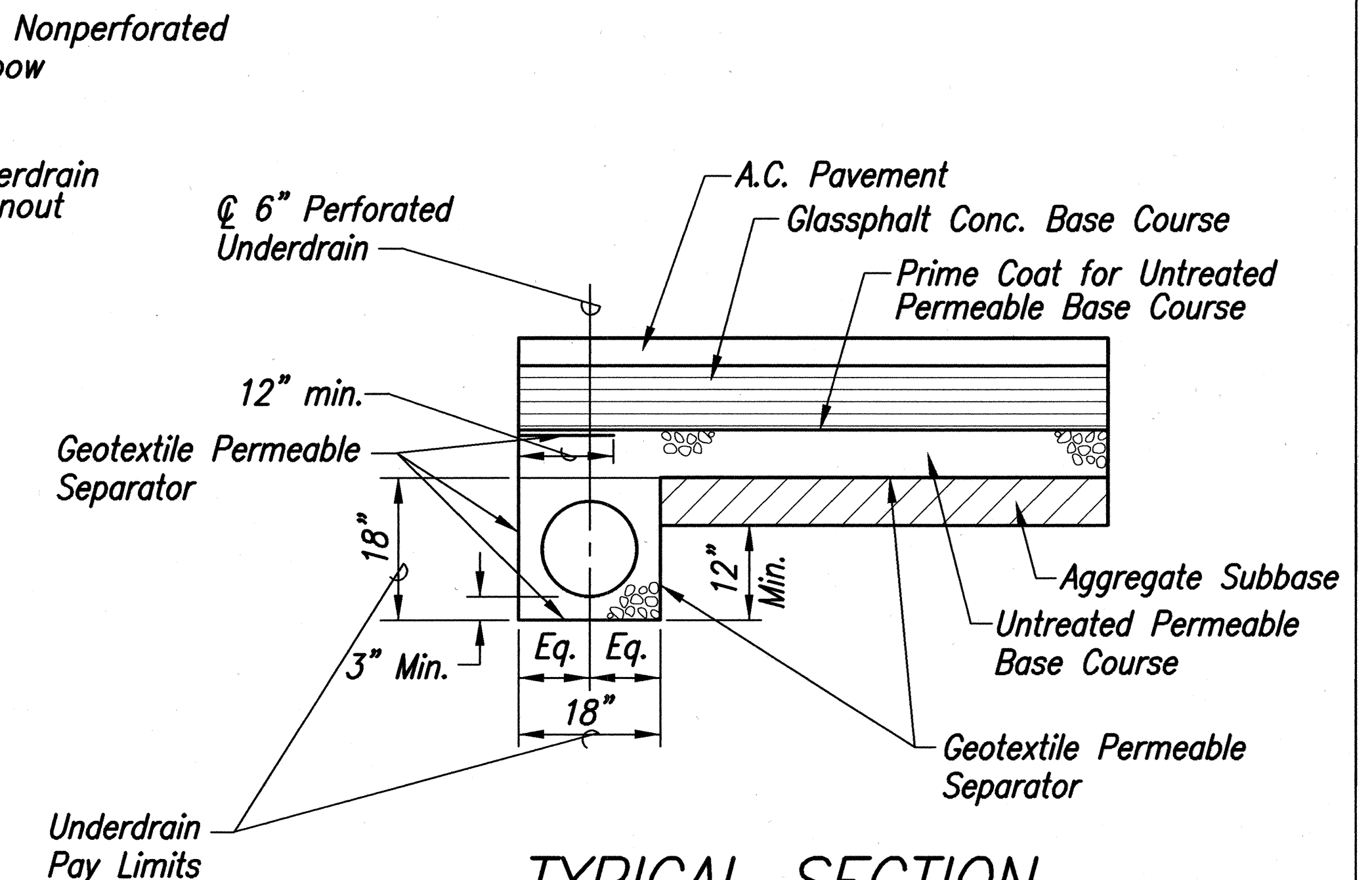
CONNECTION TO HEADWALL

Scale: 1/2"=1'-0"



SECTION UNDERDRAIN CLEANOUT

Scale: 1"=1'-0"



TYPICAL SECTION 6" PERFORATED UNDERDRAIN

Scale: 3/4"=1'-0"

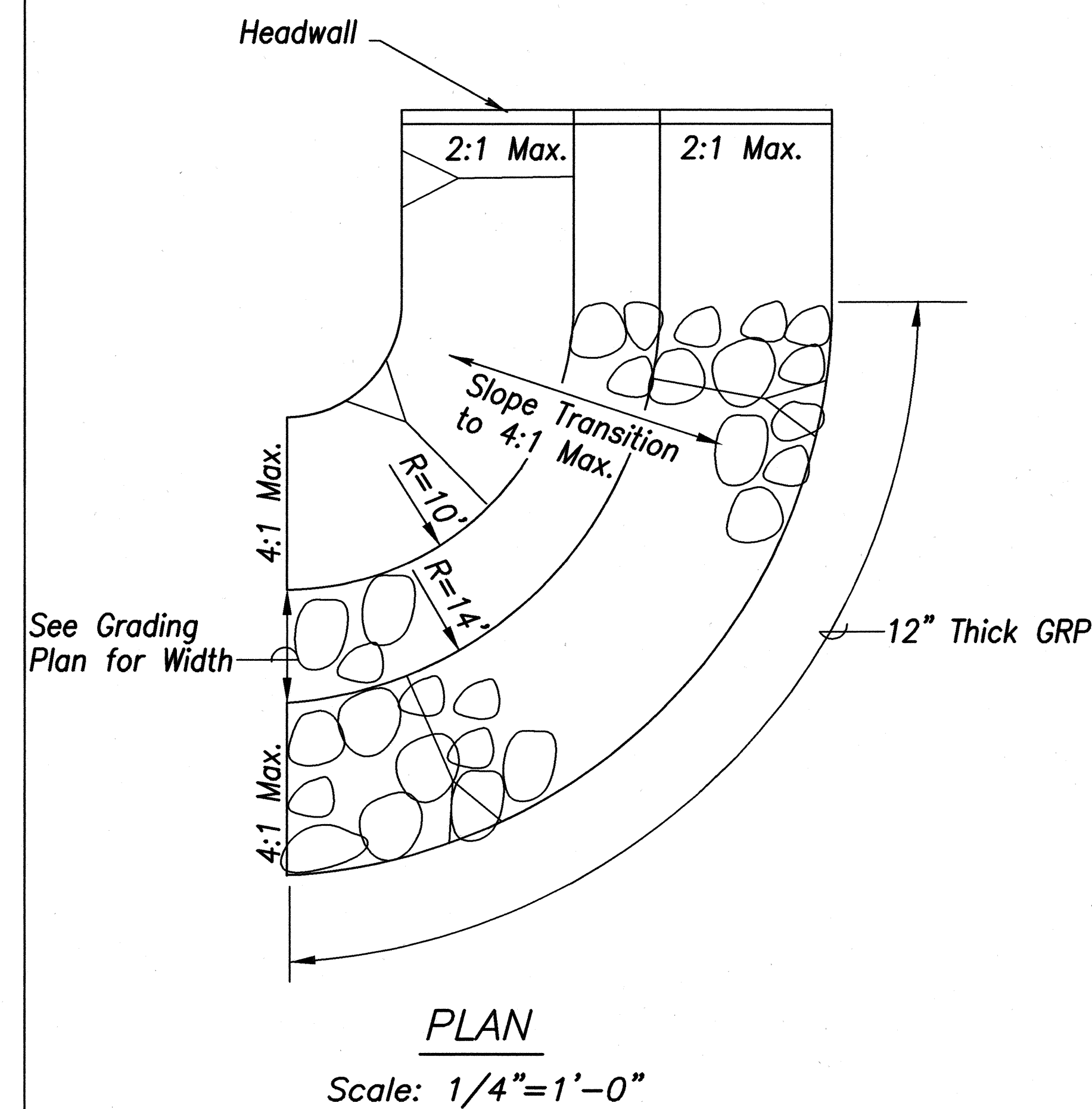
ORIGINAL PLAN	SURVEY PLOTTED BY	DATE
NOTE BOOK	DRAWN BY	
	DESIGNED BY	
	CHECKED BY	
	QUANTITIES BY	
	NO.	

	STATE OF HAWAII DEPARTMENT OF TRANSPORTATION HIGHWAYS DIVISION
	MISCELLANEOUS DETAILS
	MOKULELE HIGHWAY WIDENING
	Vicinity of Cane Haul Road To Maui Humane Society Federal - Aid Project No. NH-0311(5)
	Scale: AS NOTED Date: JUNE 2002

THIS WORK WAS PREPARED BY
ME OR UNDER MY SUPERVISION

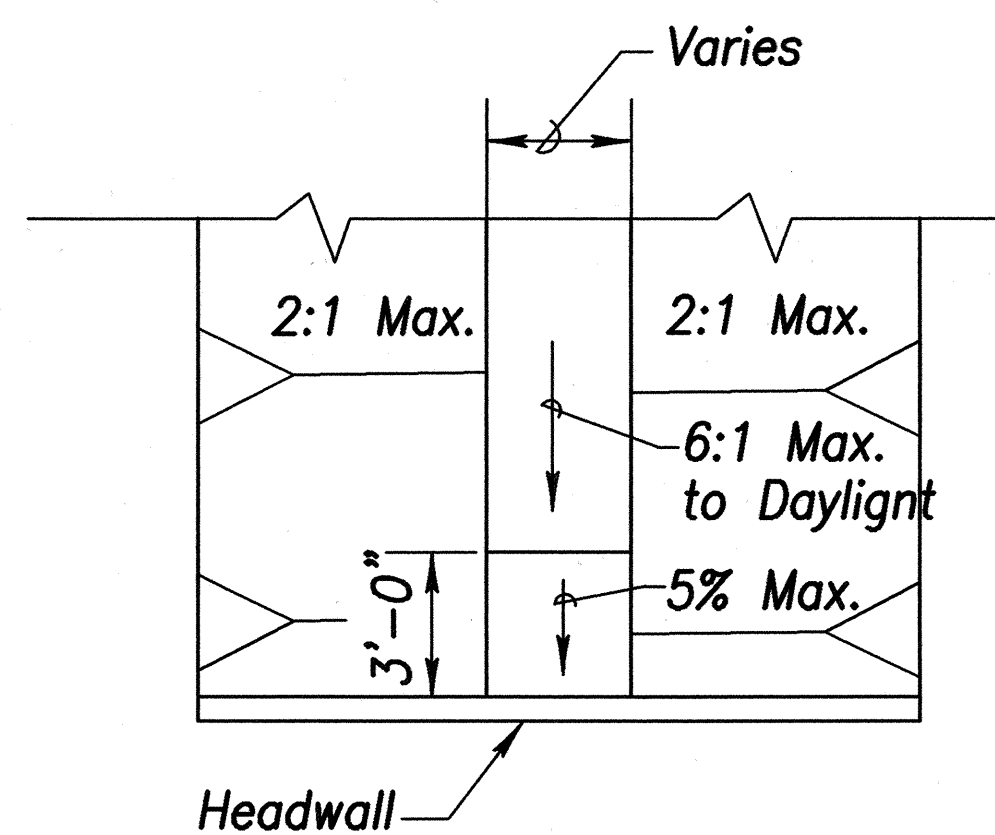
SHEET No. 1 OF 4 SHEETS

FED. ROAD DIST. NO.	STATE	FEDERAL - AID PROJ. NO.	FISCAL YEAR	SHEET NO.	TOTAL SHEETS
HAWAII	HAW.	NH-0311(5)	2003	77	189



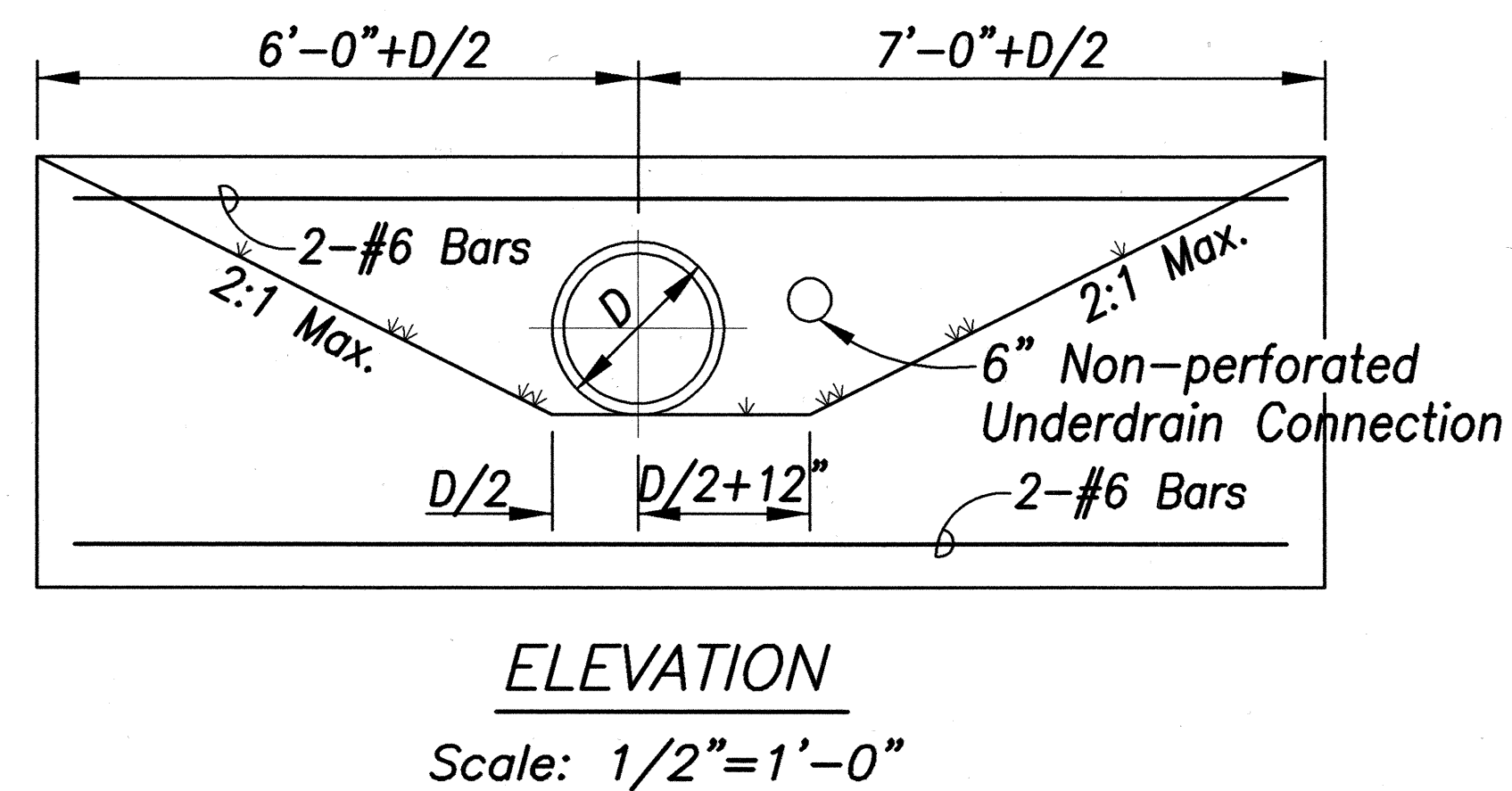
TYPICAL EARTH SWALE

WHERE SHOWN



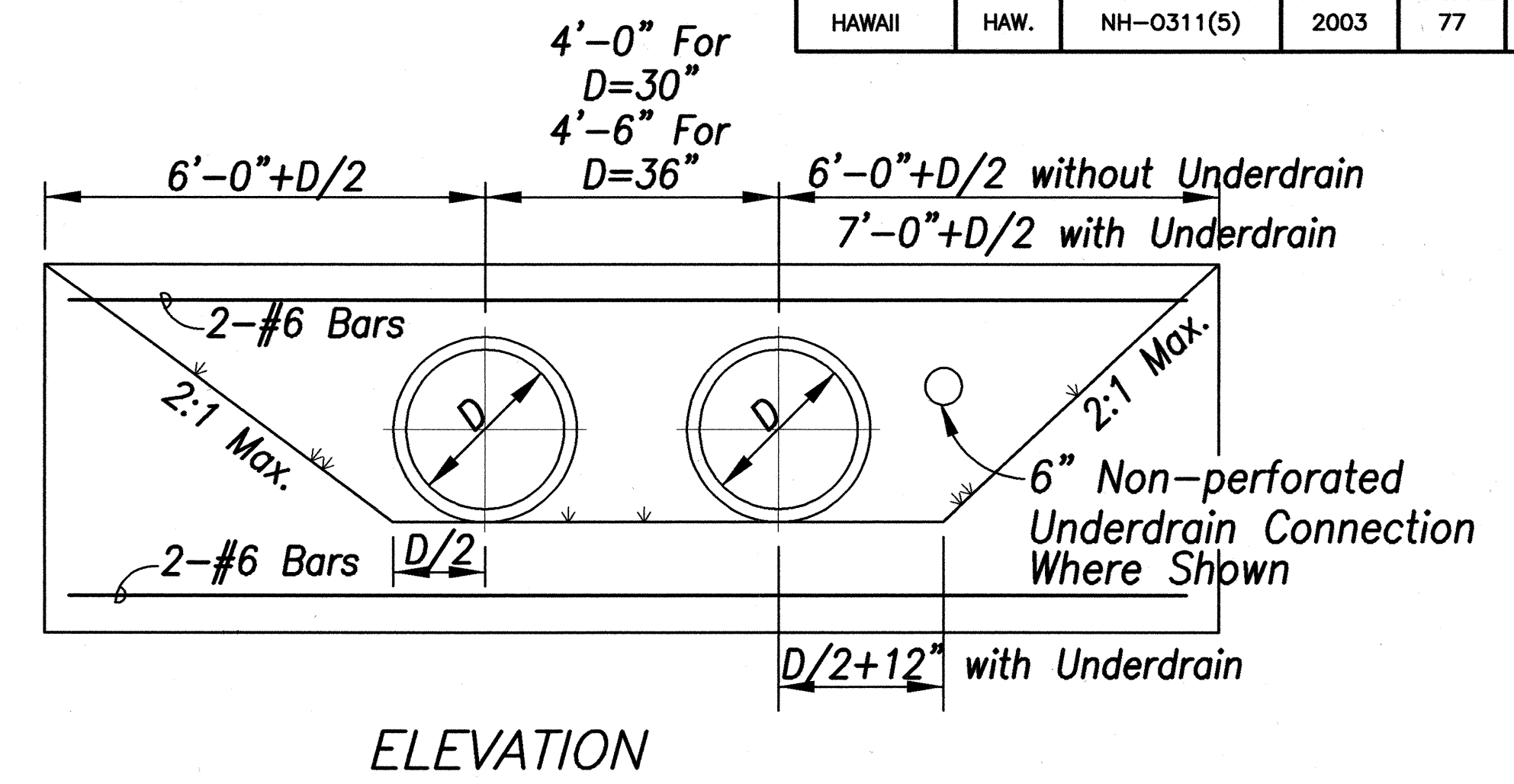
TYPICAL INLET CONDITION

WHERE SHOWN

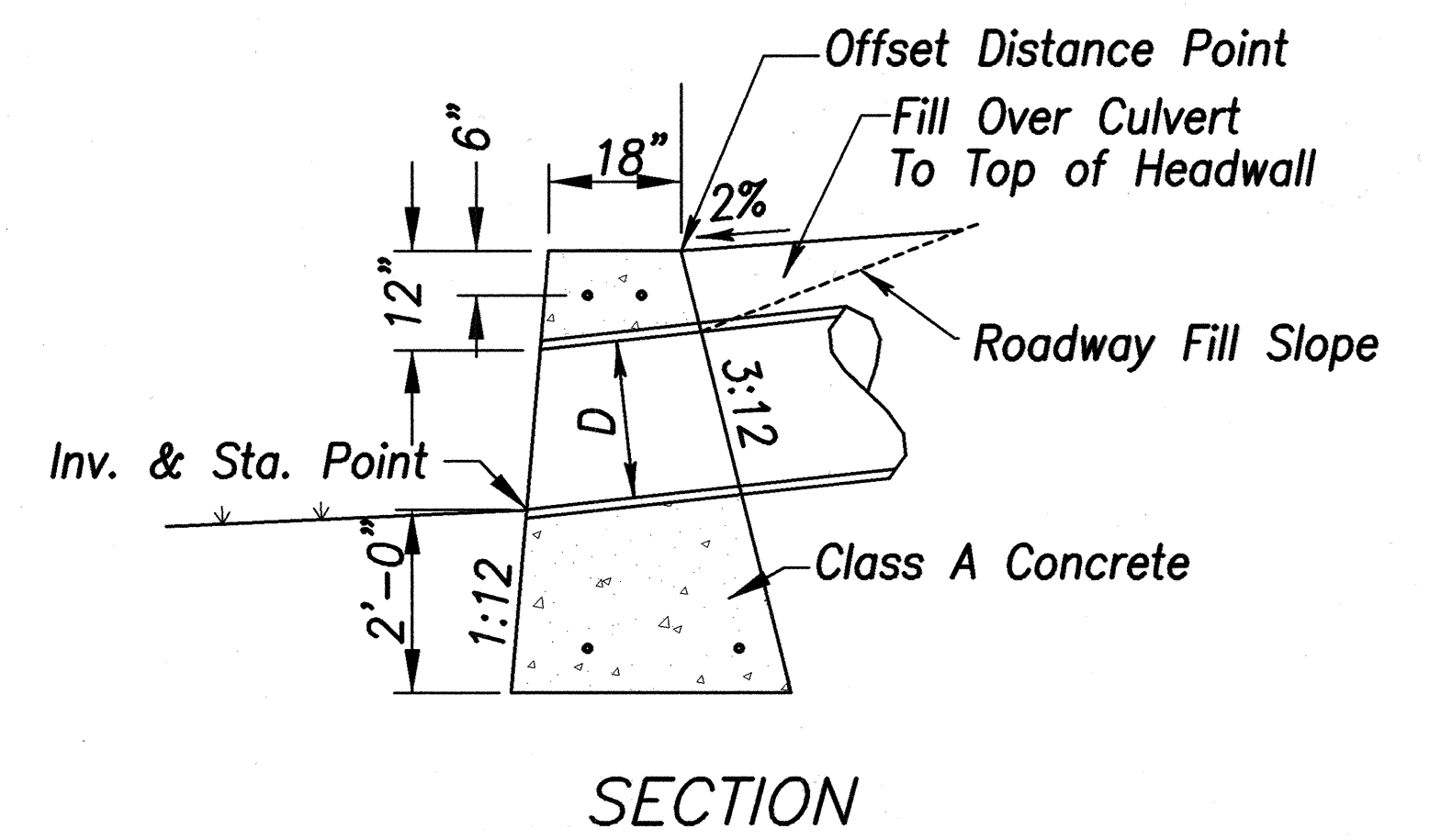


FOR SINGLE PIPE DRAIN

Note:
For general notes &
bevel detail see std.
plan H-16.



FOR DUAL DRAIN



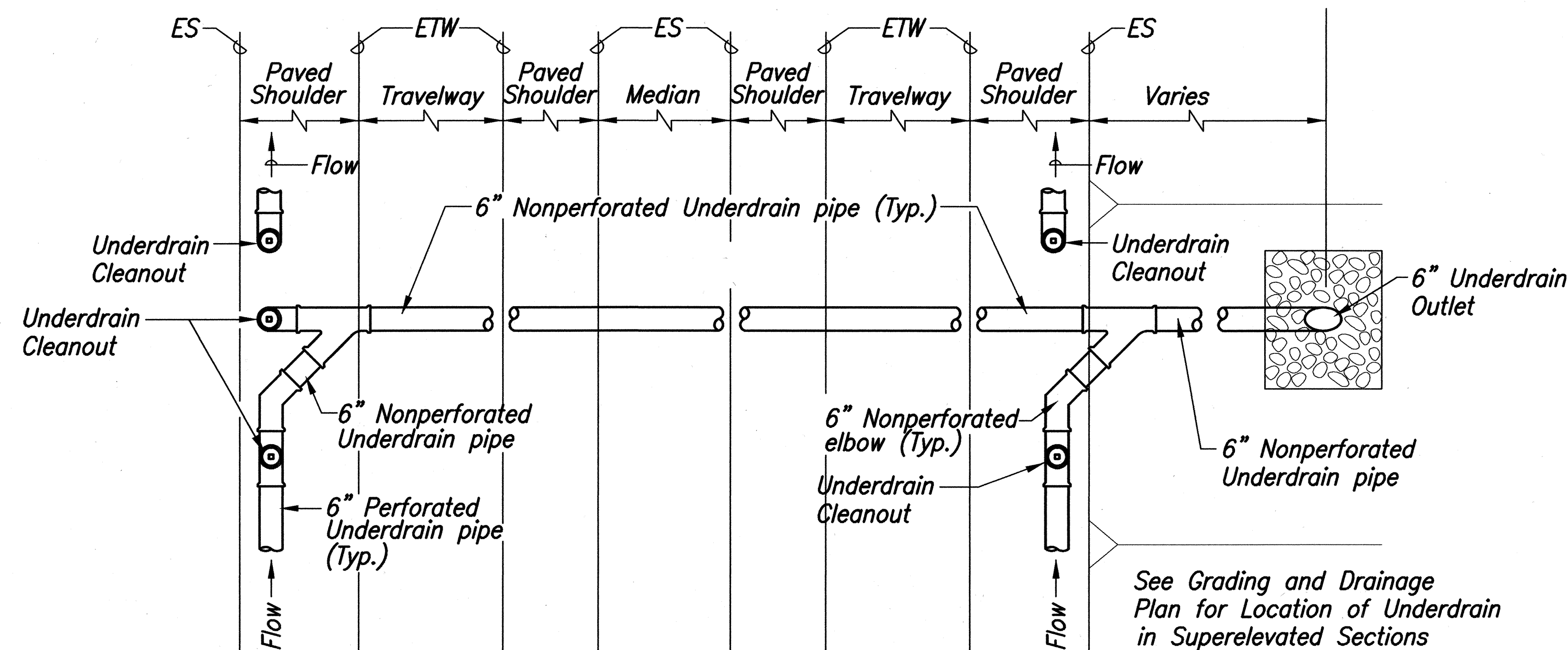
CONCRETE HEADWALL DETAILS

Scale: 1/2"=1'-0"

Note:
Structure Excavation for earth
swale and inlet condition will be
paid for under Item No. 206.2025,
"Structure Excavation for Drainage
Culverts".

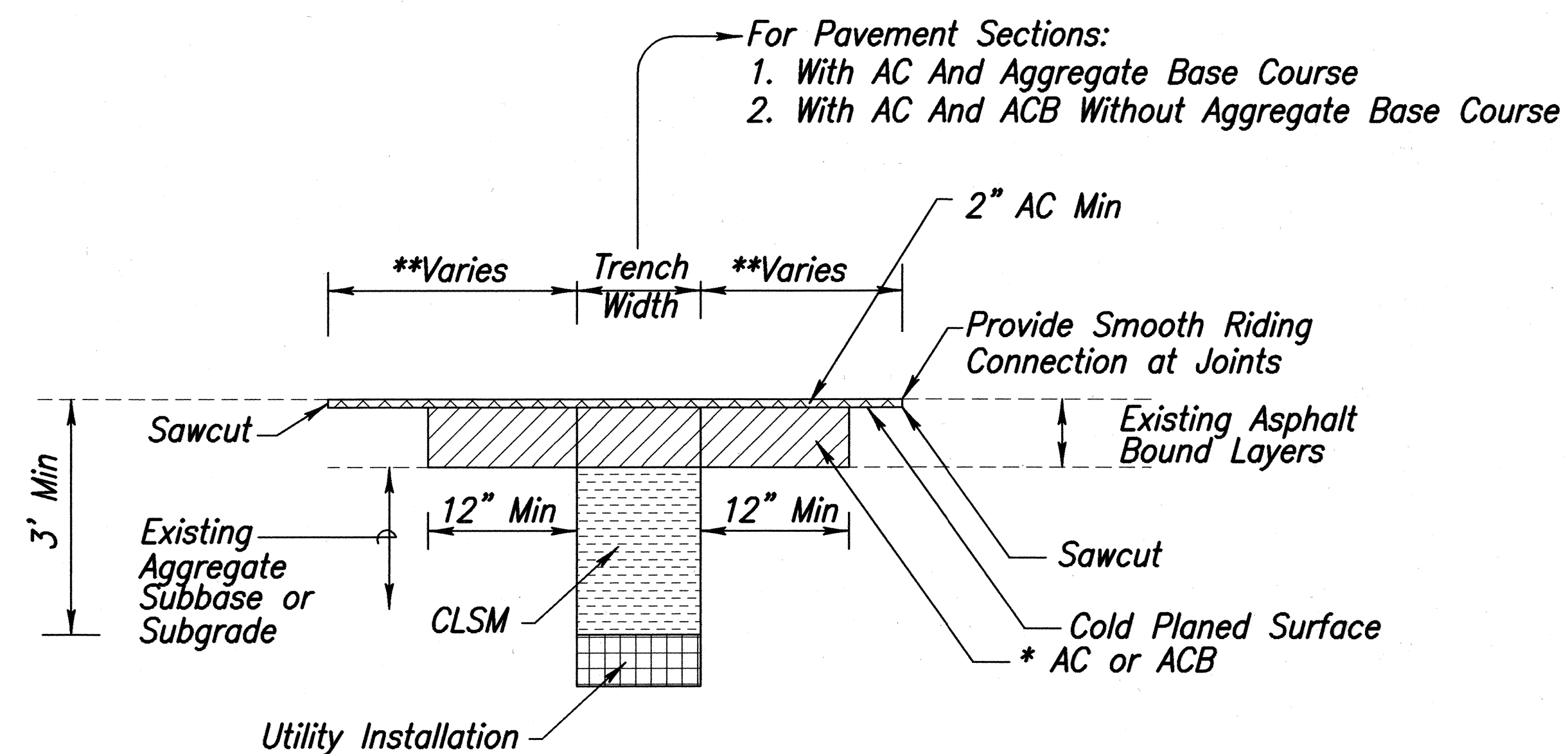
	STATE OF HAWAII DEPARTMENT OF TRANSPORTATION HIGHWAYS DIVISION	
	MISCELLANEOUS DETAILS MOKULELE HIGHWAY WIDENING Vicinity of Cane Haul Road To Maui Humane Society Federal - Aid Project No. NH-0311(5) Scale: AS NOTED Date: JUNE 2002	
THIS WORK WAS PREPARED BY ME OR UNDER MY SUPERVISION	SHEET No. 2 OF 4 SHEETS	

FED. ROAD DIST. NO.	STATE	FEDERAL - AID PROJ. NO.	FISCAL YEAR	SHEET NO.	TOTAL SHEETS
HAWAII	HAW.	NH-0311(5)	2003	78	189



CONNECTION TO UNDERDRAIN OUTLET

Scale: Not to Scale



* NOTES:

1. When Thickness Less Than 8", use AC
2. When Thickness 6" or Greater, use ACB or AC

** NOTES:

1. If Trench Aligned Transverse to Direction of Travel 1 Foot on Each Side of Trench.
2. If Trench Aligned Along Direction of Travel, to Edge of Lane in Which Edge of Trench Is Located.
3. Smoothness of Paved Surfaces:
The Distance From The Paved Surface to the Testing Edge of a Ten-foot Straight Edge Between Two Points of Contact Shall Not Exceed 3/16".

NOTES:

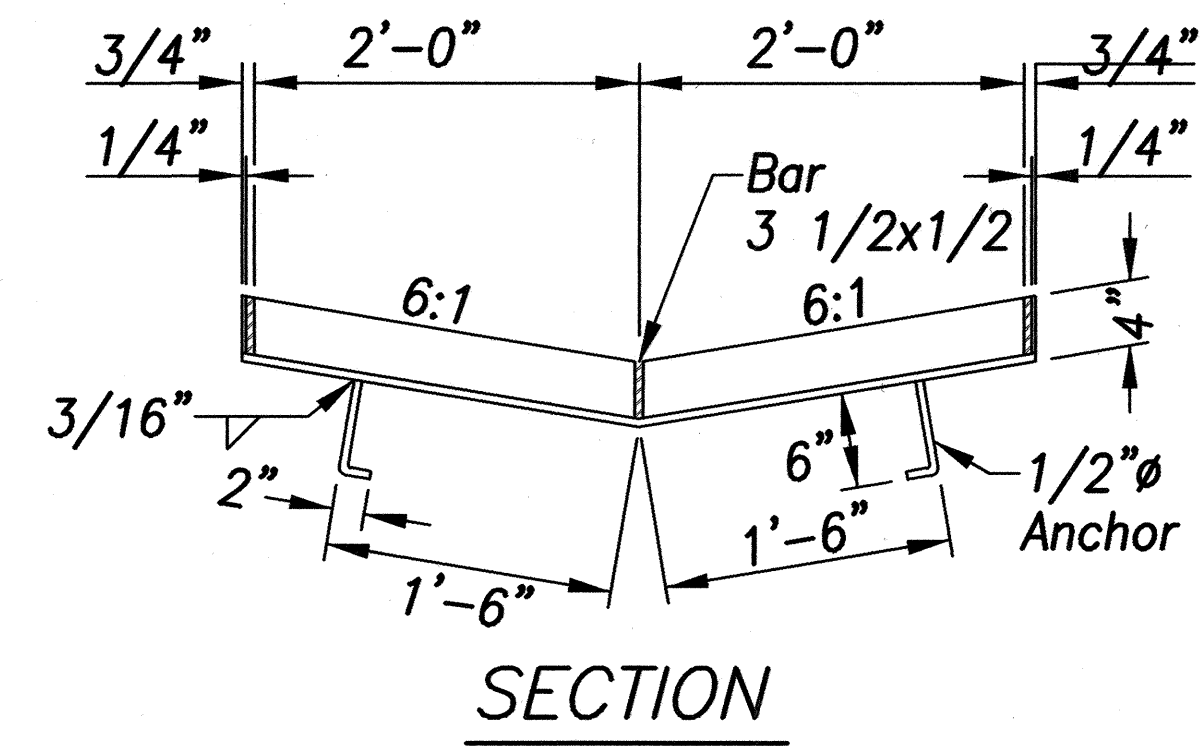
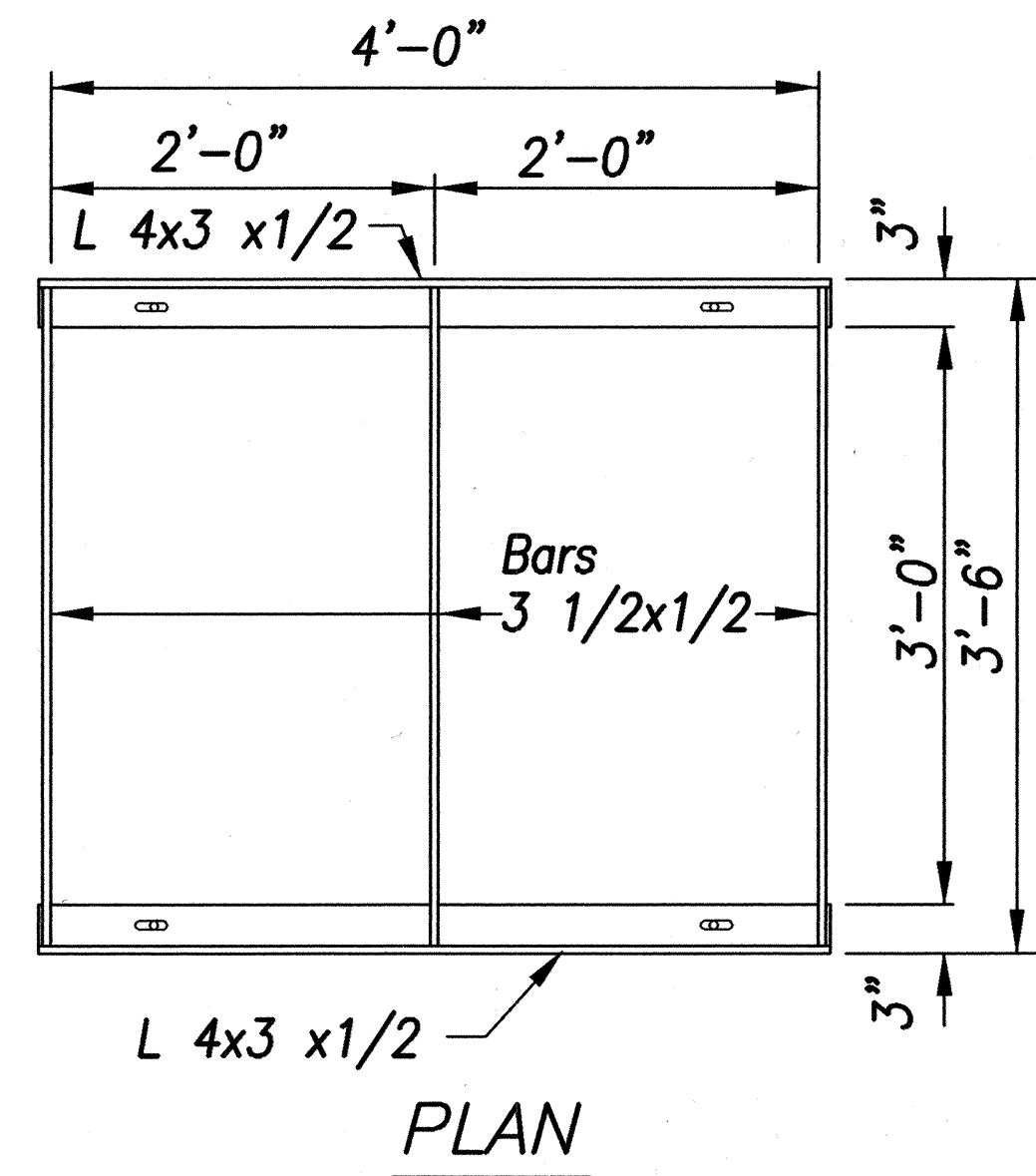
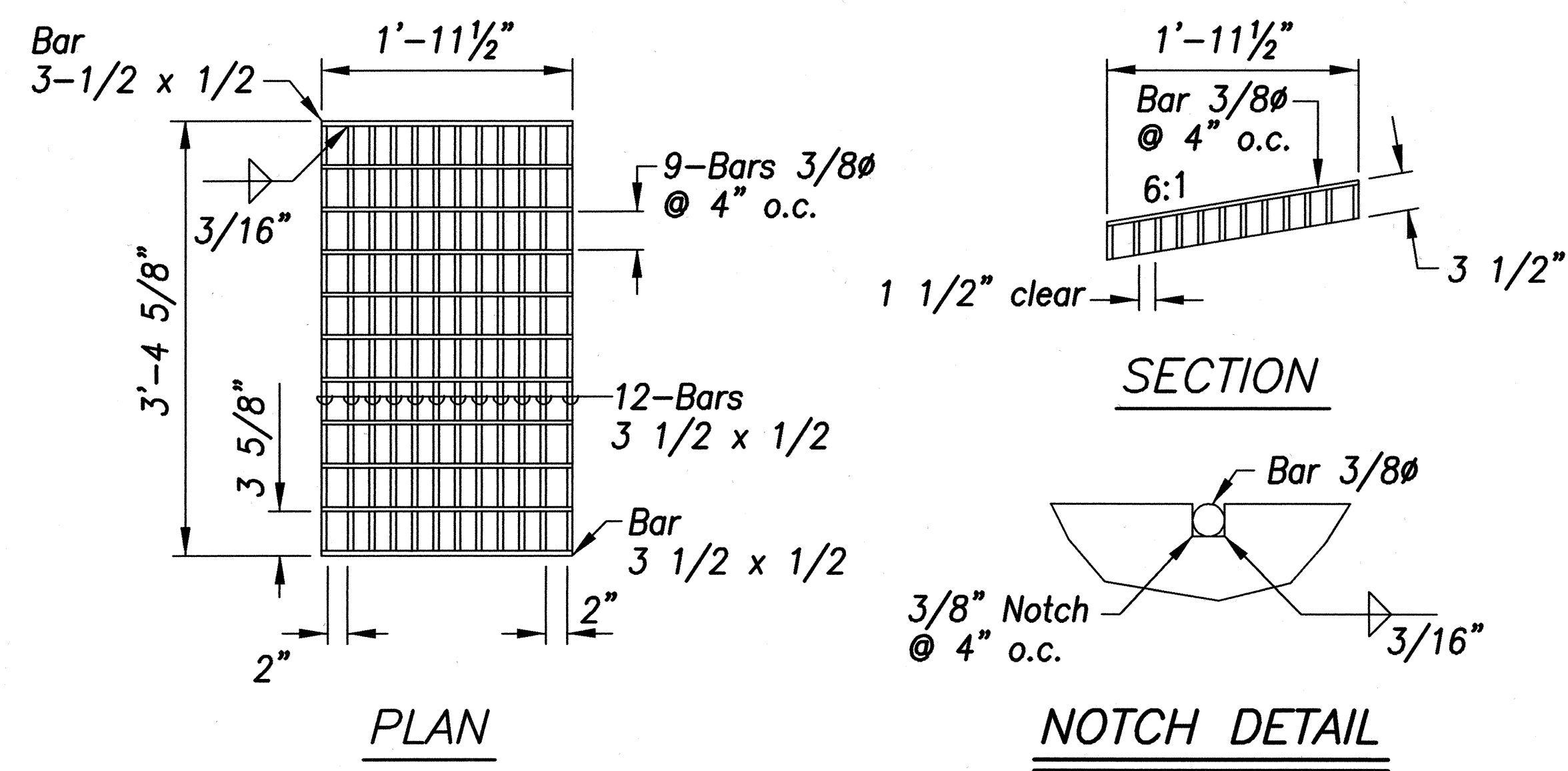
1. This Trench Restoration is to be Used Wherever the Pavement is an Asphalt Surface, Including Medians and Paved Areas Between Guardrails. For Trenches Located in Unpaved Areas, the Backfill Need Not be CLSM and can be Backfilled as Specified in the Standard Specifications.
2. Tack Coat Existing Asphalt Bound Material Faces Prior to Filling Excavation With Asphalt Bound Material.
3. When Groundwater is Encountered in Trenches, Backfill With

ASPHALT PAVEMENT RESTORATION OVER TRENCH EXCAVATIONS FOR EXISTING PAVEMENTS WITHOUT PERMEABLE BASE

Not to Scale

	STATE OF HAWAII DEPARTMENT OF TRANSPORTATION HIGHWAYS DIVISION	
	MISCELLANEOUS DETAILS	
	MOKULELE HIGHWAY WIDENING Vicinity of Cane Haul Road	
	To Maui Humane Society Federal - Aid Project No. NH-0311(5) Scale: AS NOTED Date: JUNE 2002	
THIS WORK WAS PREPARED BY ME OR UNDER MY SUPERVISION SATO & ASSOCIATES, INC.		
SHEET No. 3 OF 4 SHEETS		

FED. ROAD DIST. NO.	STATE	FEDERAL - AID PROJ. NO.	FISCAL YEAR	SHEET NO.	TOTAL SHEETS
HAWAII	HAW.	NH-0311(5)	2003	79	189



GRATE

FRAME

TYPE 61614P STEEL GRATES

Scale: 1"=1'-0"

ORIGINAL PLAN	SURVEY PLOTTED BY	DATE
NOTE BOOK	DRAWN BY	
	REVIEWED BY	
	QUANTITIES BY	
	CHECKED BY	
No.		

DANIEL S. MIYASATO
LICENSED PROFESSIONAL ENGINEER
No. 3443-C
HAWAII U.S.A.

STATE OF HAWAII
DEPARTMENT OF TRANSPORTATION
HIGHWAYS DIVISION

MISCELLANEOUS DETAILS

MOKULELE HIGHWAY WIDENING

Vicinity of Cane Haul Road

To
Maui Humane Society

Federal - Aid Project No. NH-0311(5)

Scale: AS NOTED Date: JUNE 2002

THIS WORK WAS PREPARED BY
ME OR UNDER MY SUPERVISION

SATO & ASSOCIATES, INC.

SHEET No. 4 OF 4 SHEETS