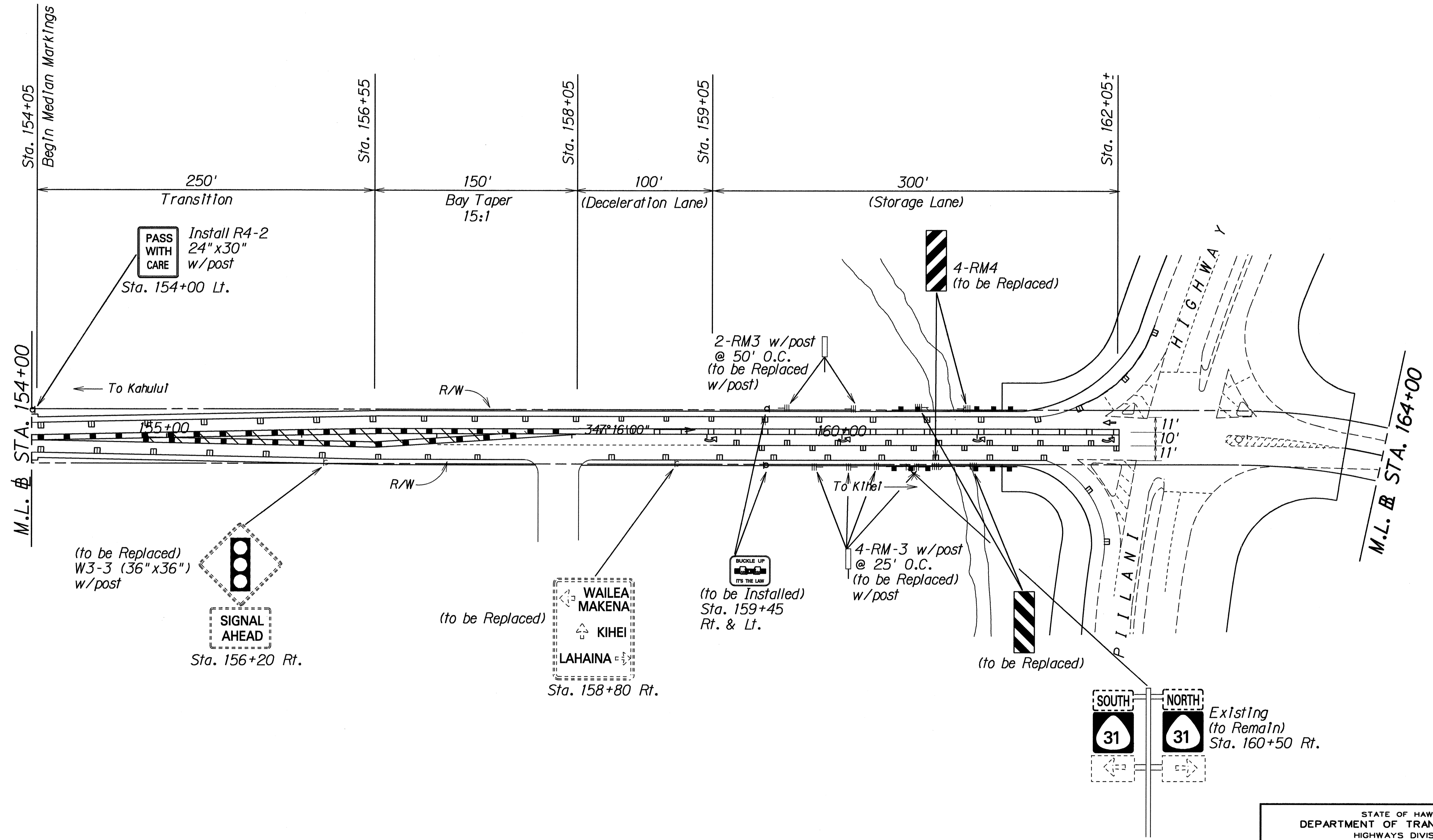


FED. ROAD DIST. NO.	STATE	PROJ. NO.	FISCAL YEAR	SHEET NO.	TOTAL SHEETS
HAWAII	HAW.	311A-01-93M	1993	21	28

TRUE NORTH
SCALE: 1" = 40'



ORIGINAL PLAN	SURVEY PLOTTED BY	DATE
NOTES BOOK	DRAWN BY	
DESIGNED BY	CHECKED BY	
NO. _____		

STATE OF HAWAII
DEPARTMENT OF TRANSPORTATION
HIGHWAYS DIVISION

SIGNING AND PAVEMENT MARKING PLAN

MOKULELE HIGHWAY RESURFACING
Puunene Avenue to Pillani Highway
PROJECT NO. 311A-01-93M

Scale : 1" = 40' Date : March, 1993
SHEET No. 1 OF 1 SHEETS