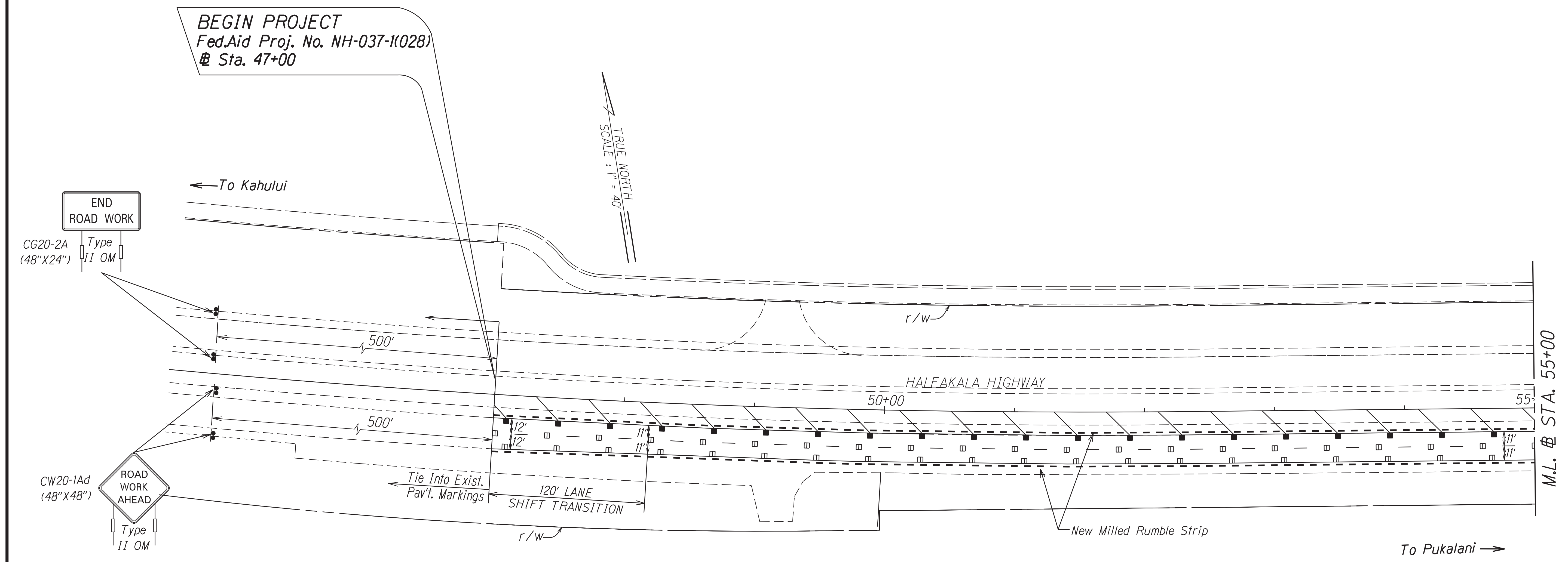


FED. ROAD DIST. NO.	STATE	FED. AID PROJ. NO.	FISCAL YEAR	SHEET NO.	TOTAL SHEETS
HAWAII	HAW.	NH-037-1(028)	2022	25	42



Sta. 47+00 Median to Sta. 59+10 Median
 Install Continuous Shoulder Milled Rumble Strip; See Detail on Plan Sheet No. T22.

Sta. 47+00 RT. to Sta. 171+04 RT.
 Install Bicycle Friendly Shoulder Milled Rumble Strip; See Detail on Plan Sheet No. T21.

NOTE:
 For new median pavement markings, tie into existing pavement markings where applicable.

SURVEY PLOTTED BY	DATE
DRAWN BY	
TRACED BY	
QUANTITIES BY	
CHECKED BY	
ORIGINAL PLAN	
NOTE BOOK	
No. <i>9/16/2020</i>	

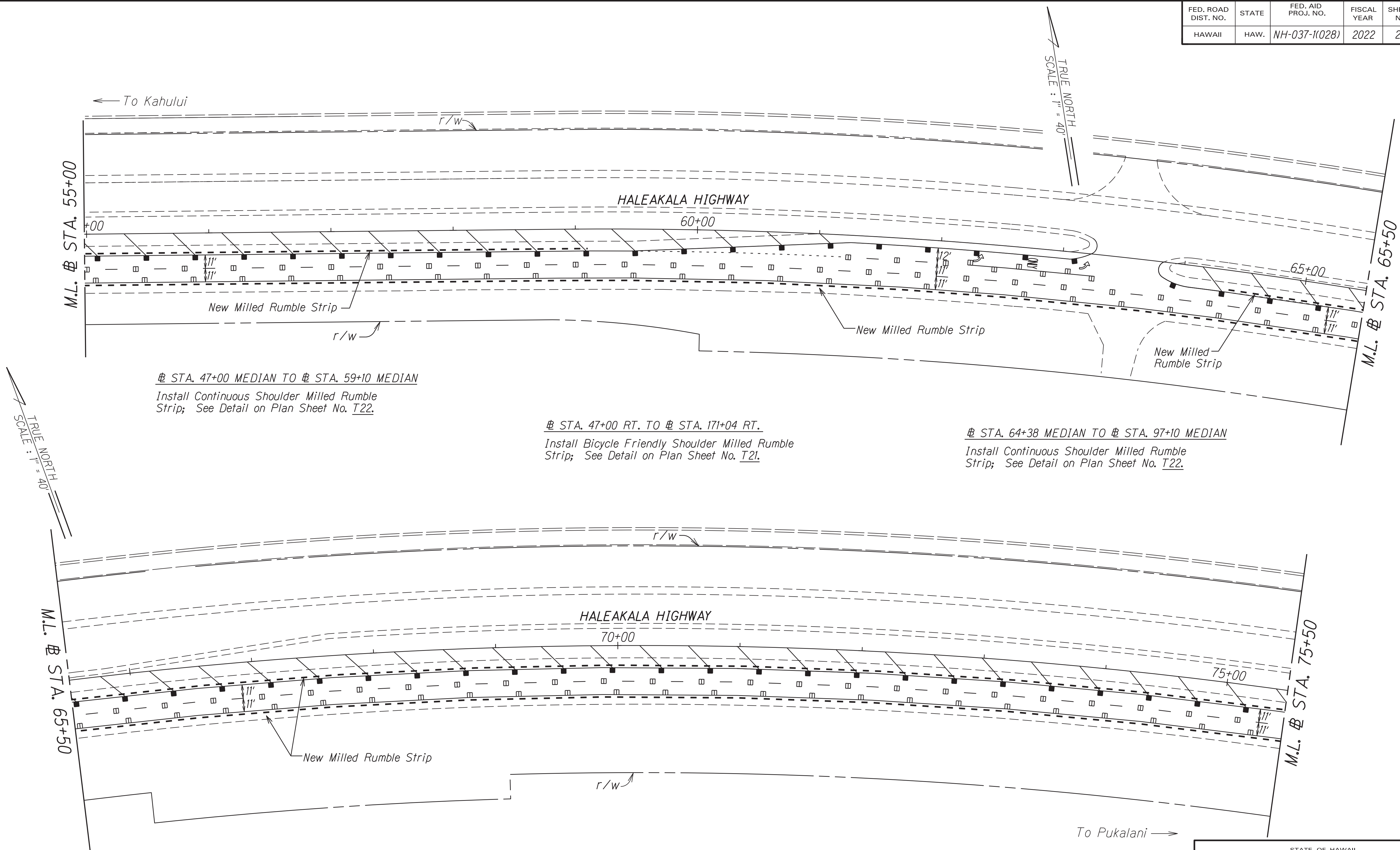
STATE OF HAWAII
 DEPARTMENT OF TRANSPORTATION
 HIGHWAYS DIVISION

PAVEMENT MARKING & SIGNING PLAN

HALEAKALA HIGHWAY RECONSTRUCTION
 North Firebreak Road to Old Haleakala Highway
 Fed. Aid Proj. No. NH-037-1(028)
 Scale: 1" = 40' Date: March 2022

SHEET No. 25 OF 22 SHEETS

FED. ROAD DIST. NO.	STATE	FED. AID PROJ. NO.	FISCAL YEAR	SHEET NO.	TOTAL SHEETS
HAWAII	HAW.	NH-037-1(028)	2022	26	42



☐ STA. 47+00 MEDIAN TO ☐ STA. 59+10 MEDIAN
 Install Continuous Shoulder Milled Rumble Strip; See Detail on Plan Sheet No. T22.

☐ STA. 47+00 RT. TO ☐ STA. 171+04 RT.
 Install Bicycle Friendly Shoulder Milled Rumble Strip; See Detail on Plan Sheet No. T21.

☐ STA. 64+38 MEDIAN TO ☐ STA. 97+10 MEDIAN
 Install Continuous Shoulder Milled Rumble Strip; See Detail on Plan Sheet No. T22.

NOTE:
 For new median pavement markings, tie into existing pavement markings where applicable.

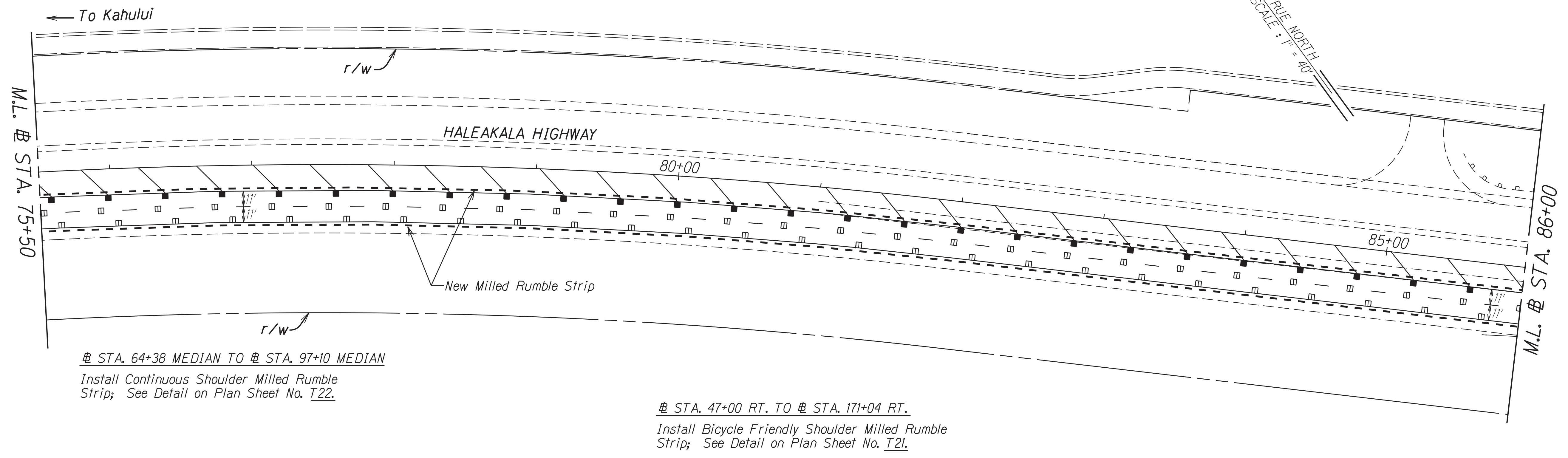
SURVEY PLOTTED BY	DATE
DRAWN BY	
TRACED BY	
QUANTITIES BY	
CHECKED BY	
ORIGINAL PLAN	
NOTE BOOK	
142.may	
N. 5/16/2022	

STATE OF HAWAII
 DEPARTMENT OF TRANSPORTATION
 HIGHWAYS DIVISION

PAVEMENT MARKING & SIGNING PLAN

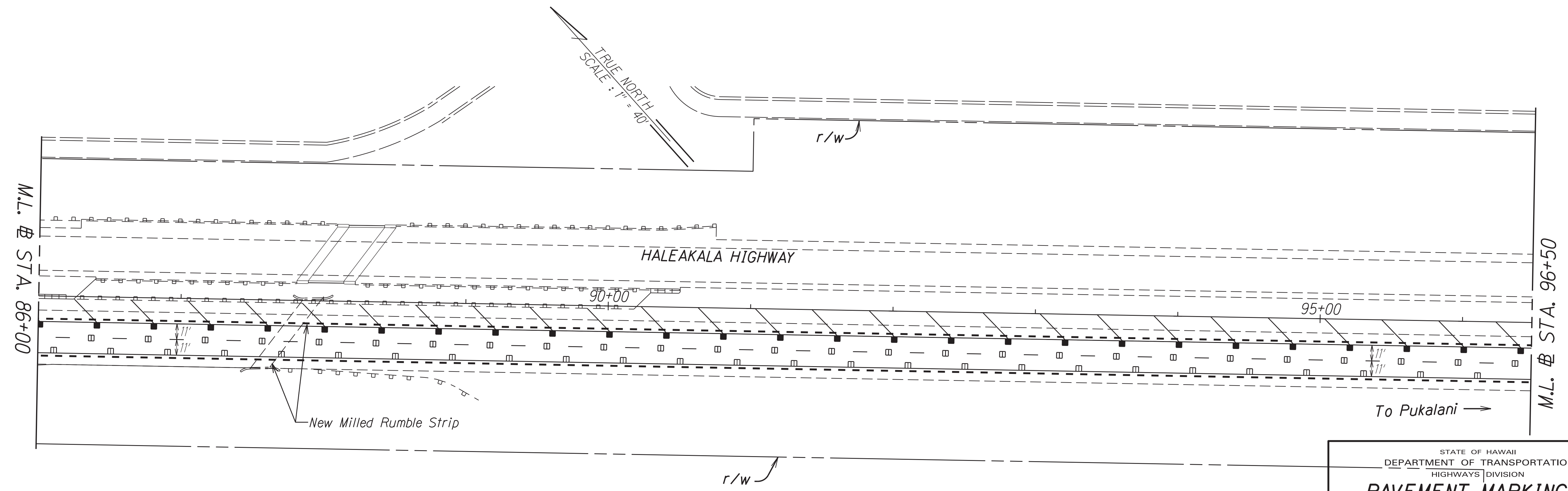
HALEAKALA HIGHWAY RECONSTRUCTION
 North Firebreak Road to Old Haleakala Highway
 Fed. Aid Proj. No. NH-037-1(028)
 Scale: 1" = 40' Date: March 2022

FED. ROAD DIST. NO.	STATE	FED. AID PROJ. NO.	FISCAL YEAR	SHEET NO.	TOTAL SHEETS
HAWAII	HAW.	NH-037-1(028)	2022	27	42



STA. 64+38 MEDIAN TO # STA. 97+10 MEDIAN
Install Continuous Shoulder Milled Rumble Strip; See Detail on Plan Sheet No. T22.

STA. 47+00 RT. TO # STA. 171+04 RT.
Install Bicycle Friendly Shoulder Milled Rumble Strip; See Detail on Plan Sheet No. T21.



NOTE:
For new median pavement markings, tie into existing pavement markings where applicable.

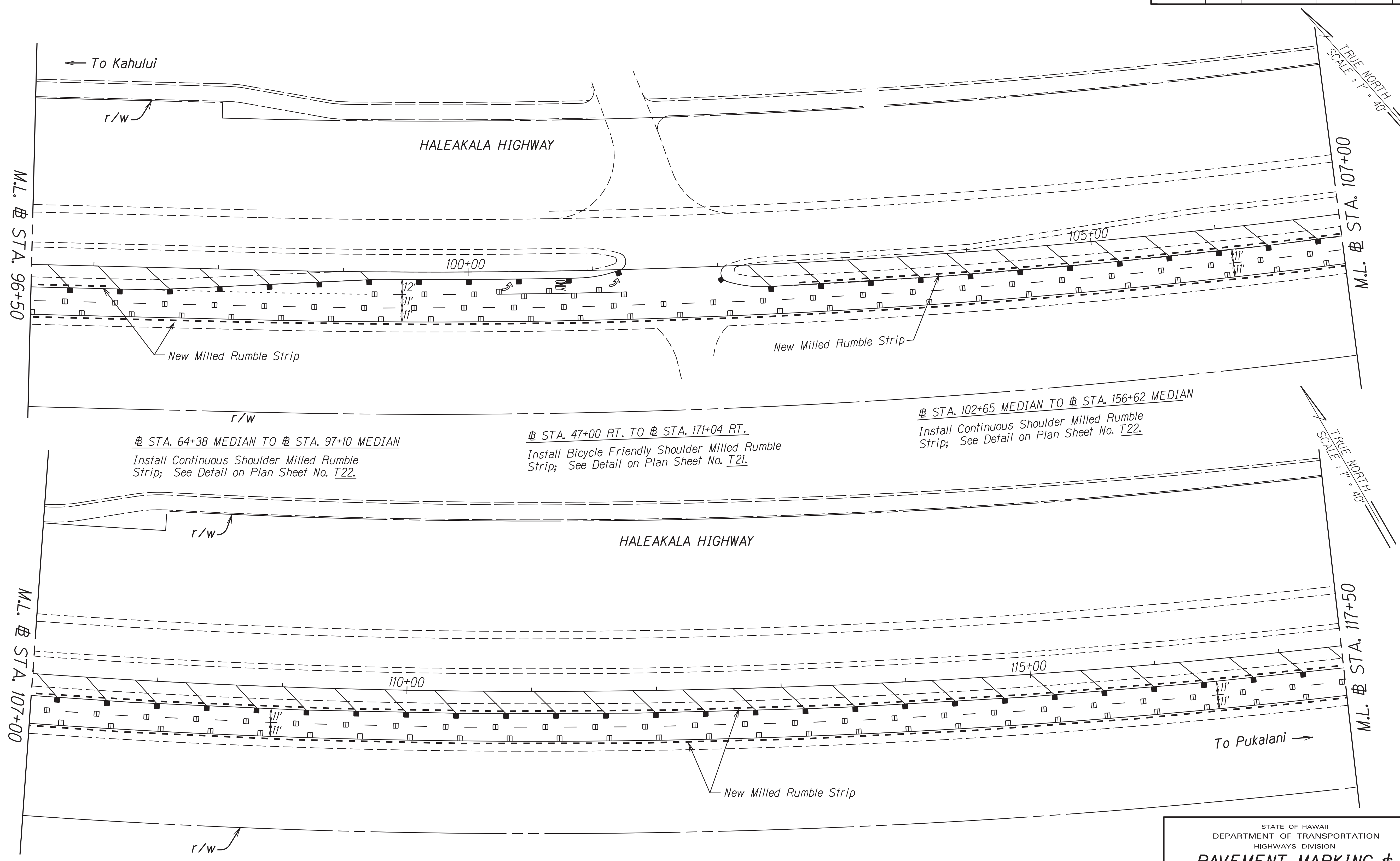
DATE	SURVEY PLOTTED BY
DRAWN BY	
TRACED BY	
NOTE BOOK	
QUANTITIES BY	
CHECKED BY	
ORIGINAL PLAN	
FILE NO.	
DATE	

STATE OF HAWAII
DEPARTMENT OF TRANSPORTATION
HIGHWAYS DIVISION

**PAVEMENT MARKING &
SIGNING PLAN**

HALEAKALA HIGHWAY RECONSTRUCTION
North Firebreak Road to Old Haleakala Highway
Fed. Aid Proj. No. NH-037-1(028)
Scale: 1" = 40' Date: March 2022

FED. ROAD DIST. NO.	STATE	FED. AID PROJ. NO.	FISCAL YEAR	SHEET NO.	TOTAL SHEETS
HAWAII	HAW.	NH-037-1(028)	2022	28	42



Ⓜ STA. 64+38 MEDIAN TO Ⓜ STA. 97+10 MEDIAN
Install Continuous Shoulder Milled Rumble Strip; See Detail on Plan Sheet No. T22.

Ⓜ STA. 47+00 RT. TO Ⓜ STA. 171+04 RT.
Install Bicycle Friendly Shoulder Milled Rumble Strip; See Detail on Plan Sheet No. T21.

Ⓜ STA. 102+65 MEDIAN TO Ⓜ STA. 156+62 MEDIAN
Install Continuous Shoulder Milled Rumble Strip; See Detail on Plan Sheet No. T22.

NOTE:
For new median pavement markings, tie into existing pavement markings where applicable.

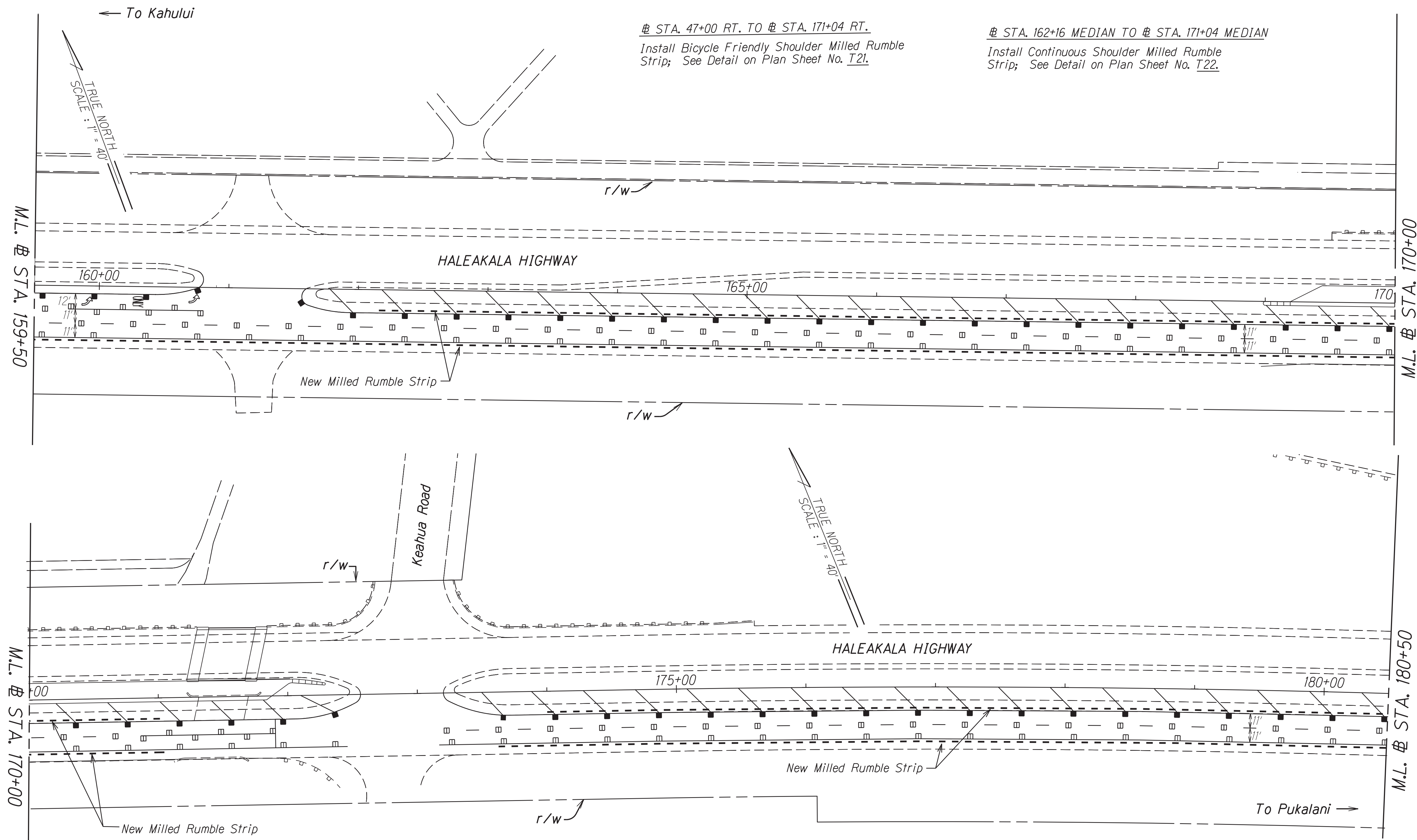
DATE	SURVEY PLOTTED BY
DRAWN BY	
TRACED BY	
NOTE BOOK	
QUANTITIES BY	
CHECKED BY	
ORIGINAL PLAN	
NOTE BOOK	
DATE	
NO.	

STATE OF HAWAII
DEPARTMENT OF TRANSPORTATION
HIGHWAYS DIVISION

PAVEMENT MARKING & SIGNING PLAN

HALEAKALA HIGHWAY RECONSTRUCTION
North Firebreak Road to Old Haleakala Highway
Fed. Aid Proj. No. NH-037-1(028)
Scale: 1" = 40' Date: March 2022

FED. ROAD DIST. NO.	STATE	FED. AID PROJ. NO.	FISCAL YEAR	SHEET NO.	TOTAL SHEETS
HAWAII	HAW.	NH-037-1(028)	2022	31	42



⊕ STA. 47+00 RT. TO ⊕ STA. 171+04 RT.
Install Bicycle Friendly Shoulder Milled Rumble Strip; See Detail on Plan Sheet No. T21.

⊕ STA. 162+16 MEDIAN TO ⊕ STA. 171+04 MEDIAN
Install Continuous Shoulder Milled Rumble Strip; See Detail on Plan Sheet No. T22.

⊕ STA. 173+62 RT. TO ⊕ STA. 214+00 RT.
Install Bicycle Friendly Shoulder Milled Rumble Strip; See Detail on Plan Sheet No. T21.

⊕ STA. 174+00 MEDIAN TO ⊕ STA. 213+10 MEDIAN
Install Continuous Shoulder Milled Rumble Strip; See Detail on Plan Sheet No. T22.

NOTE:
For new median pavement markings, tie into existing pavement markings where applicable.

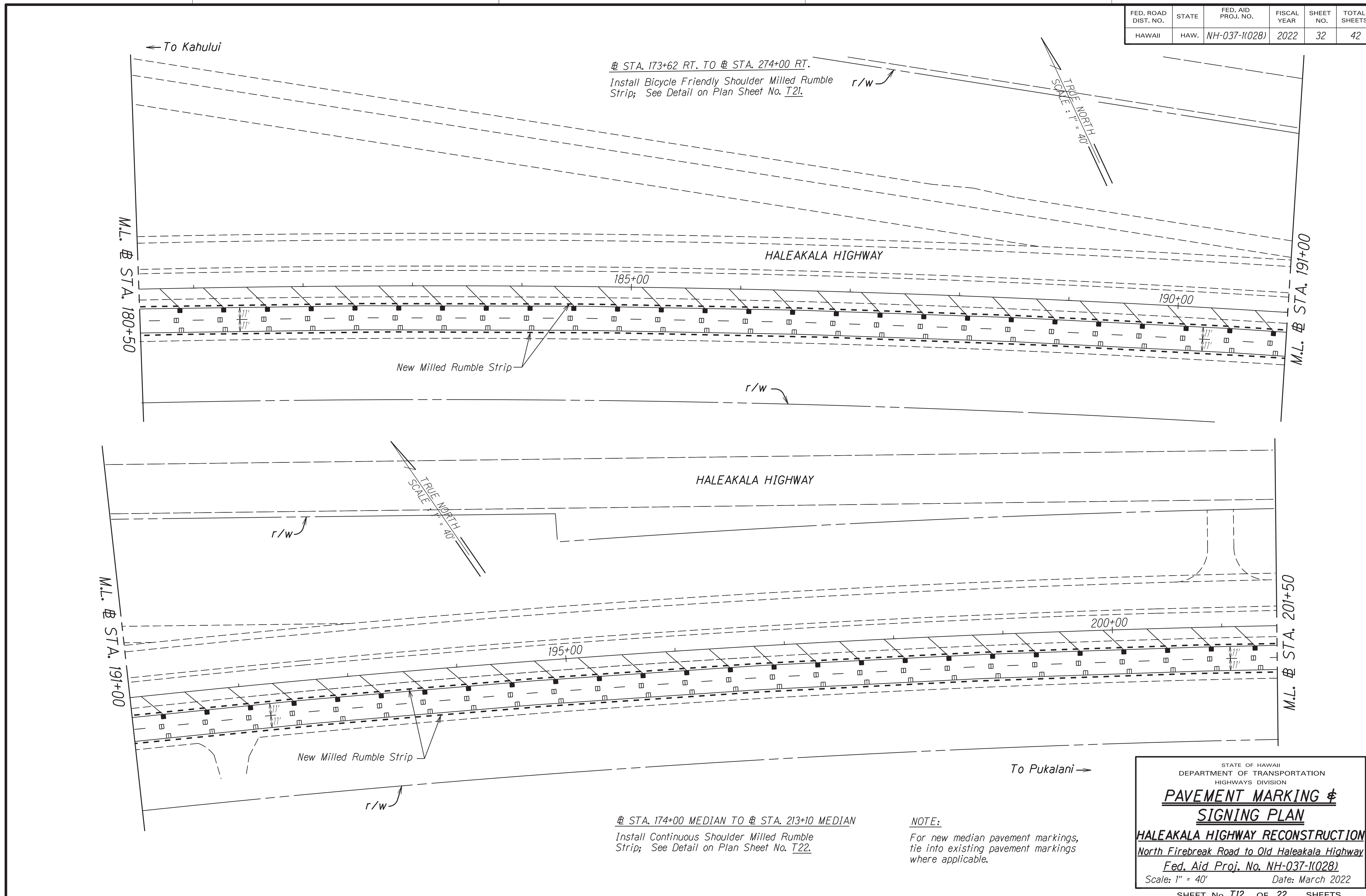
SURVEY PLOTTED BY	DATE
DRAWN BY	
TRACED BY	
QUANTITIES BY	
CHECKED BY	
ORIGINAL PLAN	
NOTE BOOK	
1d2.myl	
9/16/2021	

STATE OF HAWAII
DEPARTMENT OF TRANSPORTATION
HIGHWAYS DIVISION

**PAVEMENT MARKING &
SIGNING PLAN**

HALEAKALA HIGHWAY RECONSTRUCTION
North Firebreak Road to Old Haleakala Highway
Fed. Aid Proj. No. NH-037-1(028)
Scale: 1" = 40' Date: March 2022

FED. ROAD DIST. NO.	STATE	FED. AID PROJ. NO.	FISCAL YEAR	SHEET NO.	TOTAL SHEETS
HAWAII	HAW.	NH-037-1(028)	2022	32	42



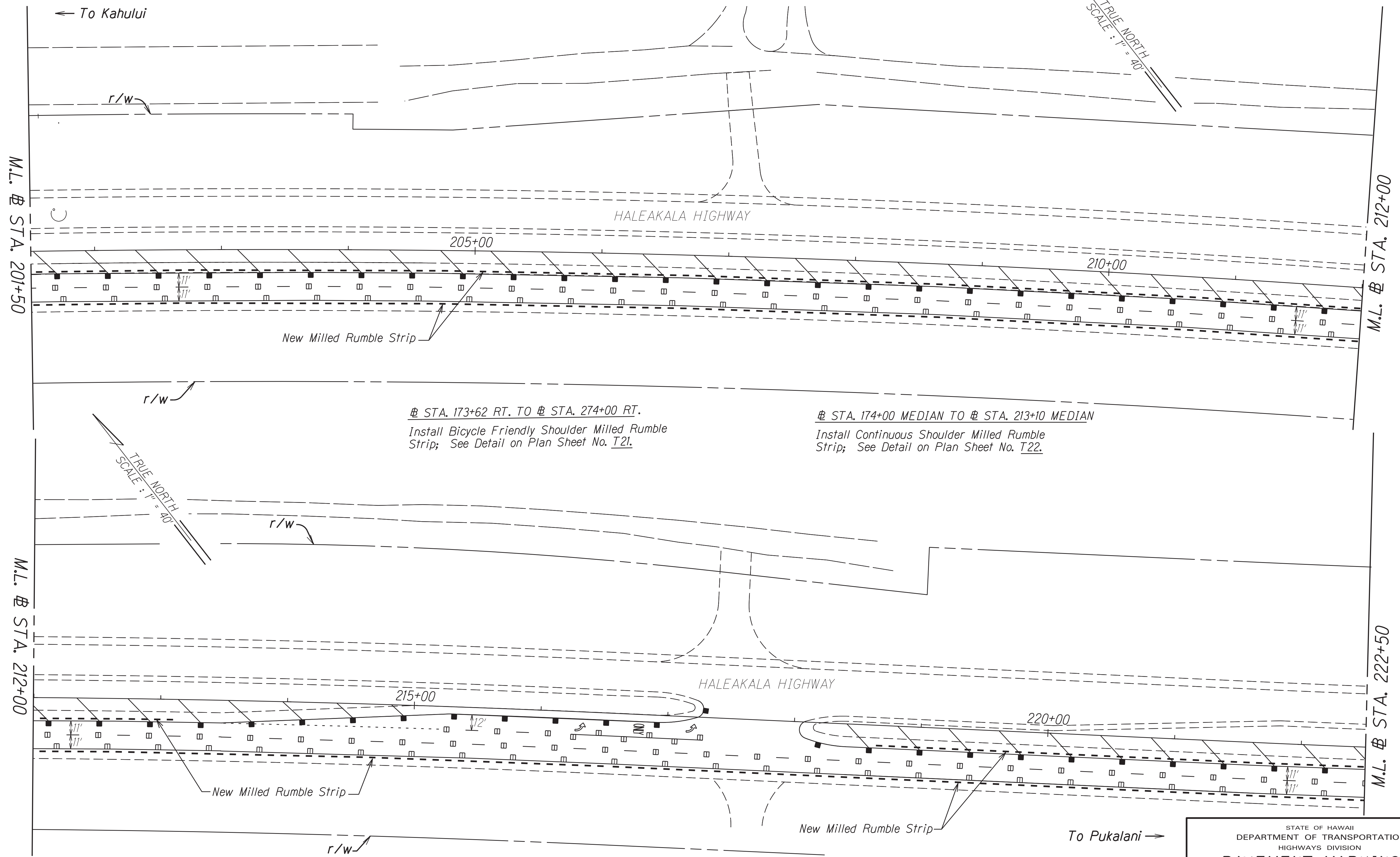
SURVEY PLOTTED BY	DATE
DRAWN BY	
TRACED BY	
QUANTITIES BY	
CHECKED BY	
ORIGINAL PLAN	
NOTE BOOK	
1d2.mxd	
N. 9/16/20	

STATE OF HAWAII
DEPARTMENT OF TRANSPORTATION
HIGHWAYS DIVISION

**PAVEMENT MARKING &
SIGNING PLAN**

HALEAKALA HIGHWAY RECONSTRUCTION
North Firebreak Road to Old Haleakala Highway
Fed. Aid Proj. No. NH-037-1(028)
Scale: 1" = 40' Date: March 2022

FED. ROAD DIST. NO.	STATE	FED. AID PROJ. NO.	FISCAL YEAR	SHEET NO.	TOTAL SHEETS
HAWAII	HAW.	NH-037-1(028)	2022	33	42



± STA. 173+62 RT. TO ± STA. 274+00 RT.
Install Bicycle Friendly Shoulder Milled Rumble Strip; See Detail on Plan Sheet No. T2L.

± STA. 174+00 MEDIAN TO ± STA. 213+10 MEDIAN
Install Continuous Shoulder Milled Rumble Strip; See Detail on Plan Sheet No. T22.

± STA. 218+65 MEDIAN TO ± STA. 236+17 MEDIAN
Install Continuous Shoulder Milled Rumble Strip; See Detail on Plan Sheet No. T22.

NOTE:
For new median pavement markings, tie into existing pavement markings where applicable.

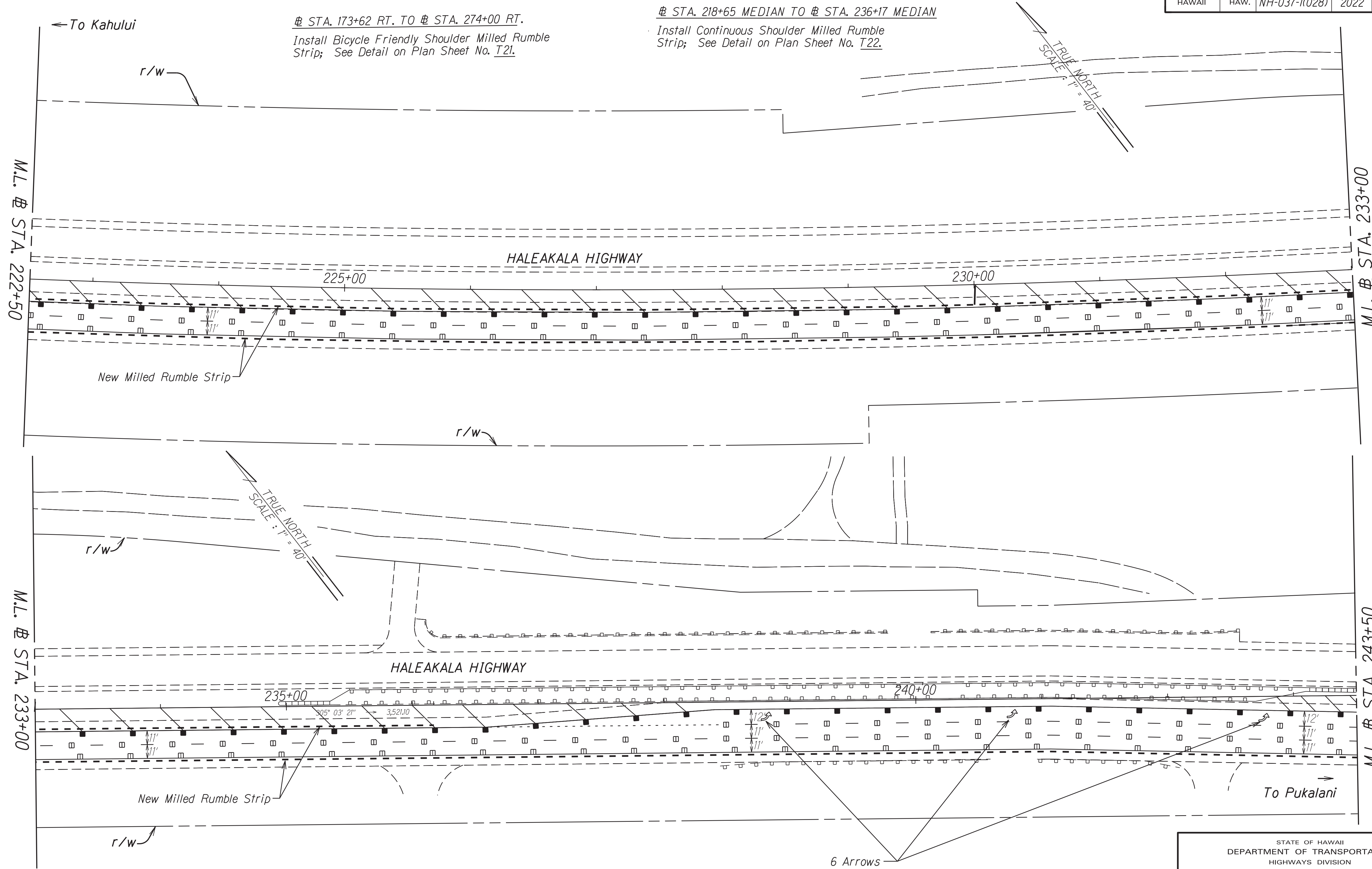
SURVEY PLOTTED BY	DATE
DRAWN BY	
TRACED BY	
QUANTITIES BY	
CHECKED BY	
ORIGINAL PLAN	
NOTE BOOK	
FILE NO.	
DATE	

STATE OF HAWAII
DEPARTMENT OF TRANSPORTATION
HIGHWAYS DIVISION

PAVEMENT MARKING & SIGNING PLAN

HALEAKALA HIGHWAY RECONSTRUCTION
North Firebreak Road to Old Haleakala Highway
Fed. Aid Proj. No. NH-037-1(028)
Scale: 1" = 40' Date: March 2022

FED. ROAD DIST. NO.	STATE	FED. AID PROJ. NO.	FISCAL YEAR	SHEET NO.	TOTAL SHEETS
HAWAII	HAW.	NH-037-1(028)	2022	34	42



⊖ STA. 173+62 RT. TO ⊖ STA. 274+00 RT.
 Install Bicycle Friendly Shoulder Milled Rumble Strip; See Detail on Plan Sheet No. T21.

⊖ STA. 218+65 MEDIAN TO ⊖ STA. 236+17 MEDIAN
 Install Continuous Shoulder Milled Rumble Strip; See Detail on Plan Sheet No. T22.

6 Arrows
 @ 200' a.c.

NOTE:
 For new median pavement markings, tie into existing pavement markings where applicable.

SURVEY PLOTTED BY	DATE
DRAWN BY	
TRACED BY	
QUANTITIES BY	
CHECKED BY	
ORIGINAL PLAN	
NOTE BOOK	
142.may	
N. Sherp0	

STATE OF HAWAII
 DEPARTMENT OF TRANSPORTATION
 HIGHWAYS DIVISION

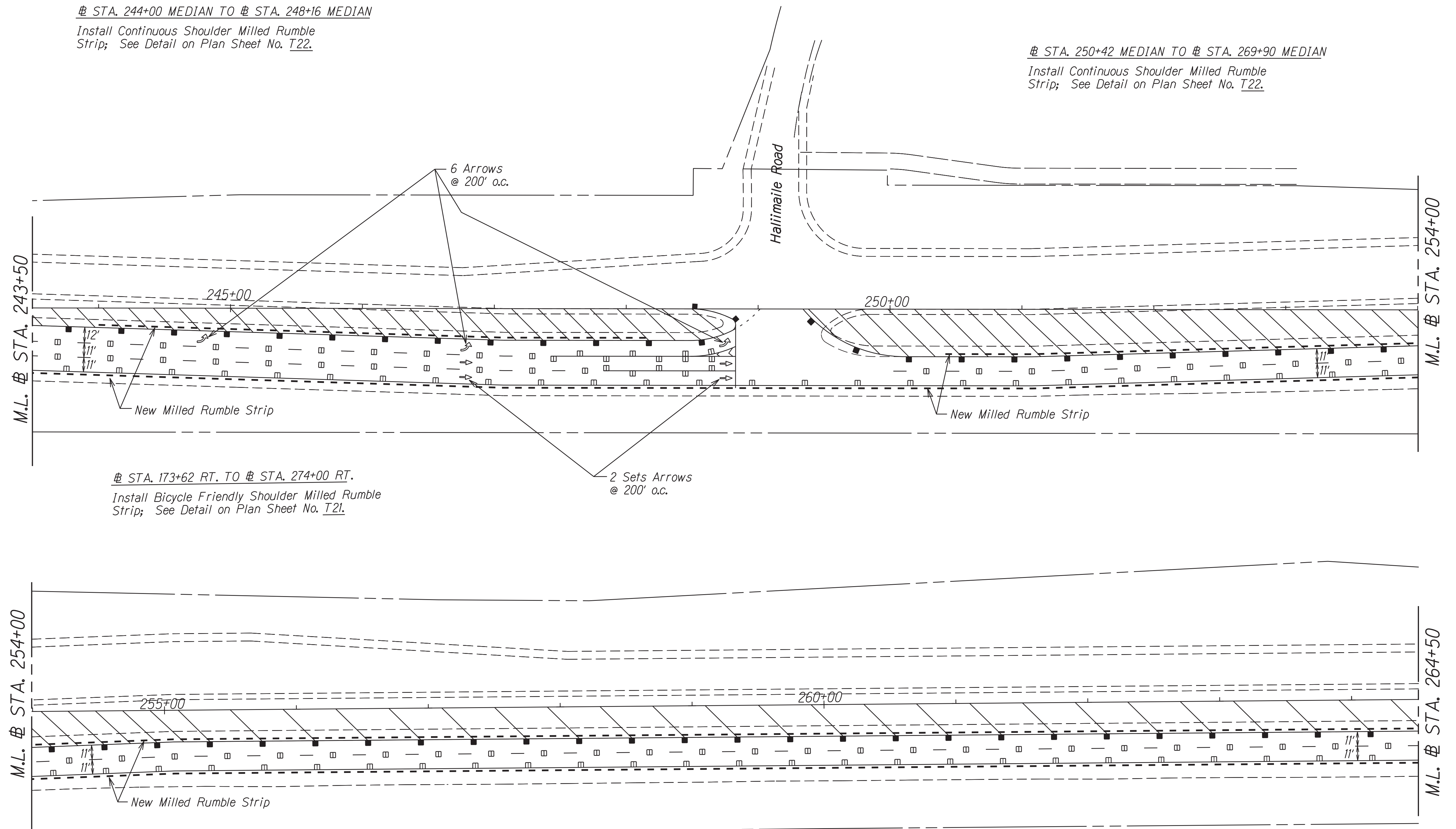
PAVEMENT MARKING & SIGNING PLAN

HALEAKALA HIGHWAY RECONSTRUCTION
 North Firebreak Road to Old Haleakala Highway
 Fed. Aid Proj. No. NH-037-1(028)
 Scale: 1" = 40' Date: March 2022

FED. ROAD DIST. NO.	STATE	PROJ. NO.	FISCAL YEAR	SHEET NO.	TOTAL SHEETS
HAWAII	HAW.	NH-037-1(028)	2022	35	42

⊕ STA. 244+00 MEDIAN TO ⊕ STA. 248+16 MEDIAN
 Install Continuous Shoulder Milled Rumble Strip; See Detail on Plan Sheet No. T22.

⊕ STA. 250+42 MEDIAN TO ⊕ STA. 269+90 MEDIAN
 Install Continuous Shoulder Milled Rumble Strip; See Detail on Plan Sheet No. T22.



⊕ STA. 173+62 RT. TO ⊕ STA. 274+00 RT.
 Install Bicycle Friendly Shoulder Milled Rumble Strip; See Detail on Plan Sheet No. T21.

NOTE:

For new median pavement markings, tie into existing pavement markings where applicable.

SURVEY PLOTTED BY	DATE
DRAWN BY	
TRACED BY	
NOTE BOOK	
QUANTITIES BY	
CHECKED BY	
ORIGINAL PLAN	
NOTE BOOK	
142.may	
N. Shierl	

STATE OF HAWAII
 DEPARTMENT OF TRANSPORTATION
 HIGHWAYS DIVISION

PAVEMENT MARKING & SIGNING PLAN

HALEAKALA HIGHWAY RECONSTRUCTION
 North Firebreak Road to Old Haleakala Highway
 Fed. Aid Proj. No. NH-037-1(028)
 Scale: 1" = 40' Date: March 2022

