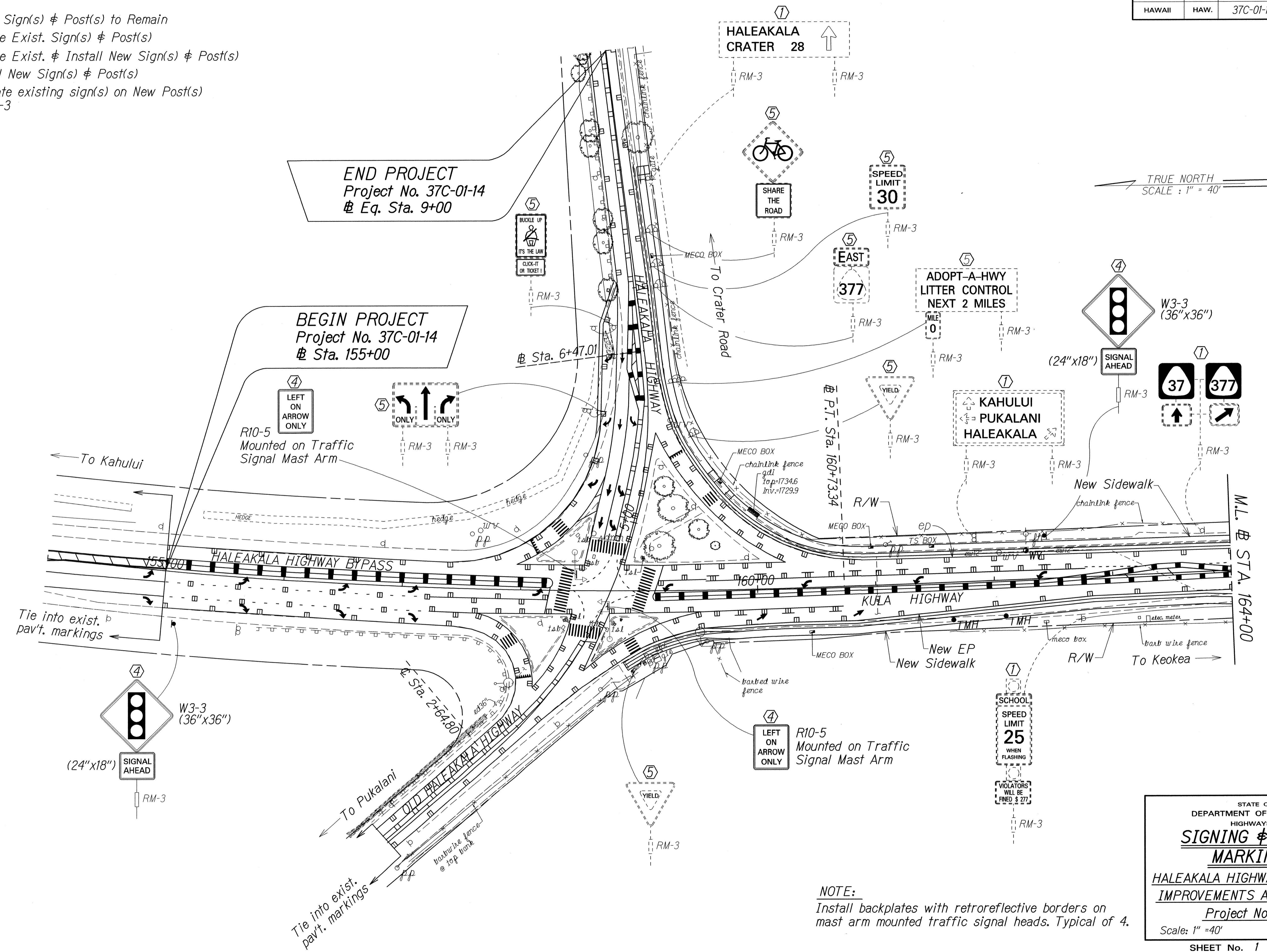


FED. ROAD DIST. NO.	STATE	PROJ. NO.	FISCAL YEAR	SHEET NO.	TOTAL SHEETS
HAWAII	HAW.	37C-01-14	2014	29	30

**KEY:**

- ① Exist. Sign(s) & Post(s) to Remain
- ② Remove Exist. Sign(s) & Post(s)
- ③ Remove Exist. & Install New Sign(s) & Post(s)
- ④ Install New Sign(s) & Post(s)
- ⑤ Relocate existing sign(s) on New Post(s) w/RM-3



SURVEY PLOTTED BY	DATE
DRAWN BY	
TRACED BY	
CHECKED BY	
ORIGINAL PLAN	
NOTE BOOK	
CHECKED BY	
DATE	

**NOTE:**  
Install backplates with retroreflective borders on mast arm mounted traffic signal heads. Typical of 4.

STATE OF HAWAII  
DEPARTMENT OF TRANSPORTATION  
HIGHWAYS DIVISION

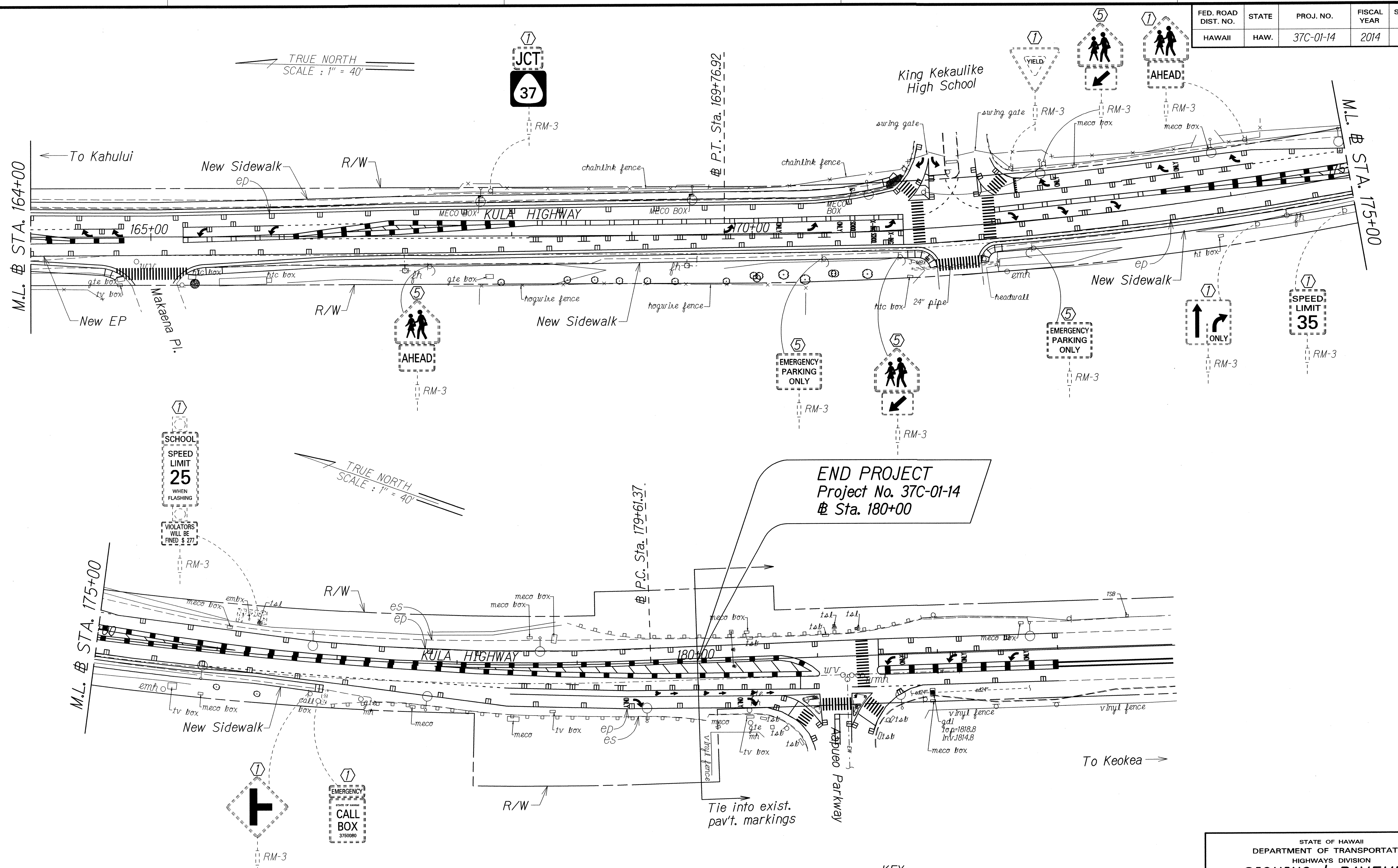
**SIGNING & PAVEMENT  
MARKING PLAN**

**HALEAKALA HIGHWAY INTERSECTION  
IMPROVEMENTS AT KULA HIGHWAY**

Project No. 37C-01-14  
Scale: 1" = 40' Date: March, 2014

SHEET No. 1 OF 2 SHEETS

FED. ROAD DIST. NO.	STATE	PROJ. NO.	FISCAL YEAR	SHEET NO.	TOTAL SHEETS
HAWAII	HAW.	37C-01-14	2014	30	30



**END PROJECT**  
Project No. 37C-01-14  
# Sta. 180+00

SURVEY PLOTTED BY	DATE
DRAWN BY	
DESIGNED BY	
CHECKED BY	
NOTE BOOK	
N.	

- KEY:**
- ① Exist. Sign(s) & Post(s) to Remain
  - ② Remove Exist. Sign(s) & Post(s)
  - ③ Remove Exist. & Install New Sign(s) & Post(s)
  - ④ Install New Sign(s) & Post(s)
  - ⑤ Relocate existing sign(s) on New Post(s) w/RM-3

STATE OF HAWAII  
DEPARTMENT OF TRANSPORTATION  
HIGHWAYS DIVISION

**SIGNING & PAVEMENT  
MARKING PLAN**

**HALEAKALA HIGHWAY INTERSECTION  
IMPROVEMENTS AT KULA HIGHWAY**

Project No. 37C-01-14

Scale: 1" = 40'      Date: March, 2014

SHEET No. 2 OF 2 SHEETS