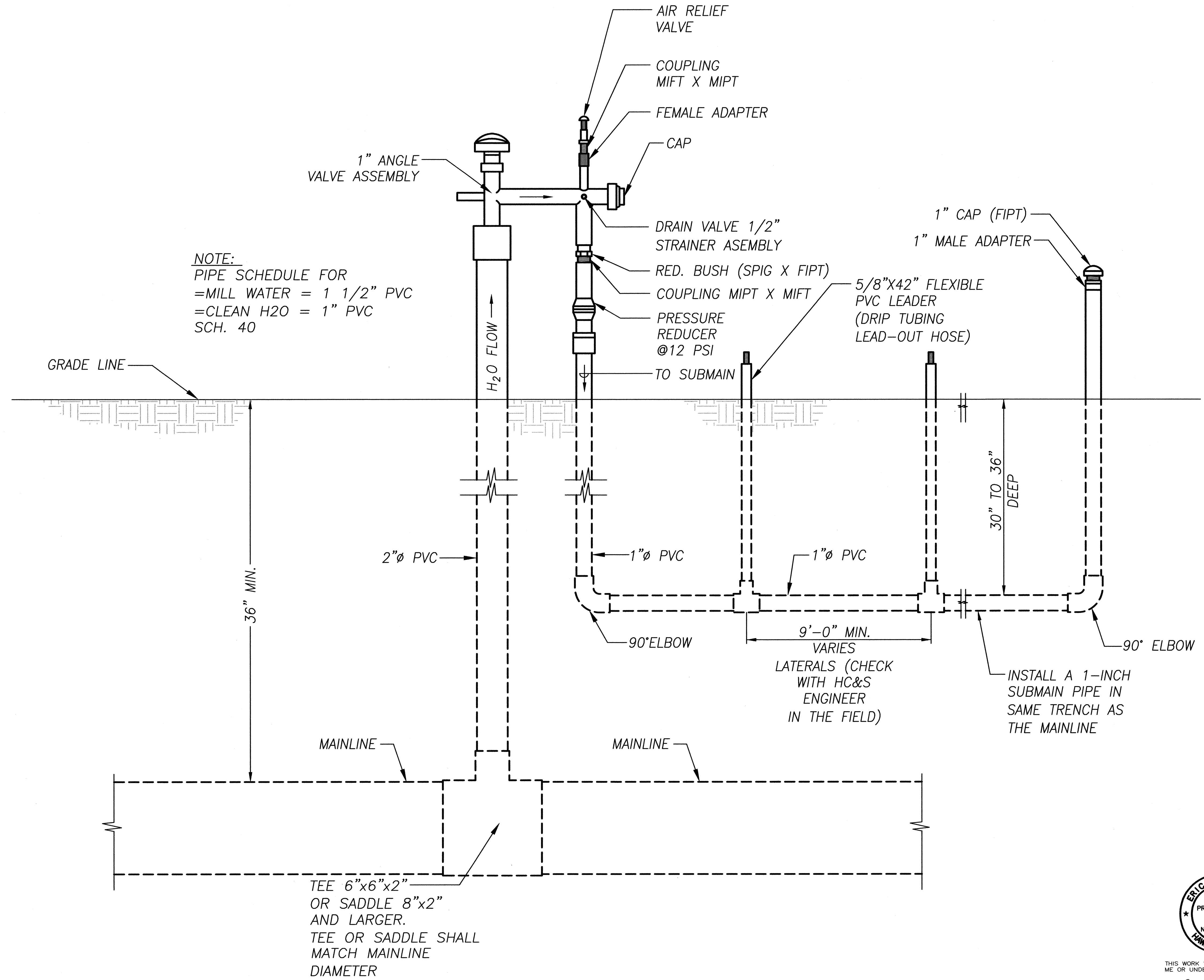


FED. ROAD DIST. NO.	STATE	FED. AID PROJ. NO.	FISCAL YEAR	SHEET NO.	TOTAL SHEETS
HAWAII	HAW.	NH-037-1(24)	2005	212	288



NOTE:  
 PIPE SCHEDULE FOR  
 =MILL WATER = 1 1/2" PVC  
 =CLEAN H2O = 1" PVC  
 SCH. 40

NOTE:  
 T-STRAINER AND DRIP IRRIGATION SHALL BE INCLUDED IN THE LUMP SUM PRICE BID FOR "AGRICULTURAL IRRIGATION WATER SYSTEM".

SURVEY PLOTTED BY	DATE
DRAWN BY	
DESIGNED BY	
QUANTITIES BY	
CHECKED BY	
NO.	

\LSP-1 (Rev. Engineering Projects) (1994) (94-056) (Revised May) (Phase 2) (WORKING/DRAWING) (P2-T-STRAINER) (Rev. Fr. Sep. 30. 2005 - 10:52am)

TEE 6"x6"x2" OR SADDLE 8"x2" AND LARGER.  
 TEE OR SADDLE SHALL MATCH MAINLINE DIAMETER  
**T-STRAINER ASSEMBLY SECTION**  
 NOT TO SCALE



THIS WORK WAS PREPARED BY ME OR UNDER MY SUPERVISION.  
*Eric N. S. Hee*  
 ENGINEERS SURVEYORS HAWAII, INC.  
 LICENSE EXPIRATION DATE: 4/30/06

STATE OF HAWAII  
 DEPARTMENT OF TRANSPORTATION  
 HIGHWAYS DIVISION

**T-STRAINER DETAIL & DRIP IRRIGATION DETAIL**

HALEAKALA HIGHWAY WIDENING, PHASE 2  
 HANA HIGHWAY TO PUKALANI BYPASS  
 FED. AID PROJ. NO. NH-037-1(24)  
 SCALE: AS NOTED DATE: MAY, 2005

SHEET No. 1 OF 1 SHEETS