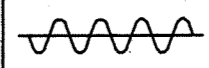
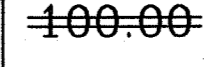
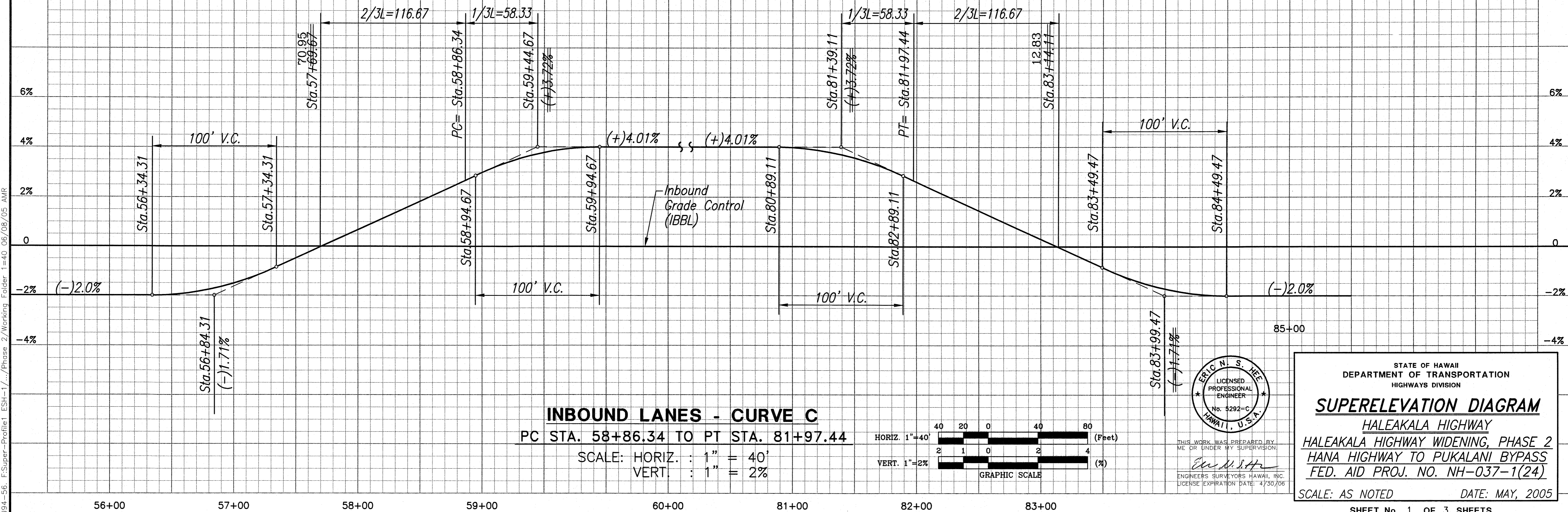


FED. ROAD DIST. NO.	STATE	FED. AID PROJ. NO.	FISCAL YEAR	SHEET NO.	TOTAL SHEETS
HAWAII	HAW.	NH-037-1(24)	2005	158	288

LEGEND FOR AS-BUILT POSTINGS	
	Squiggly line for as-built deletion
	Double line for as-built deletion
Roadway	Text for as-built posting



SURVEY PLOTTED BY	DATE
DRAWN BY	
DESIGNED BY	
QUANTITIES BY	
CHECKED BY	
No.	

194-56 - F:Super-Profile1 ESH-1/.../Phase 2/Working Folder 1=40\_06/08/05 AMR

ERIC N. S. HEE  
 LICENSED PROFESSIONAL ENGINEER  
 No. 5292-C  
 HAWAII, U.S.A.  
 THIS WORK WAS PREPARED BY ME OR UNDER MY SUPERVISION.  
 ENGINEERS SURVEYORS HAWAII, INC.  
 LICENSE EXPIRATION DATE: 4/30/06

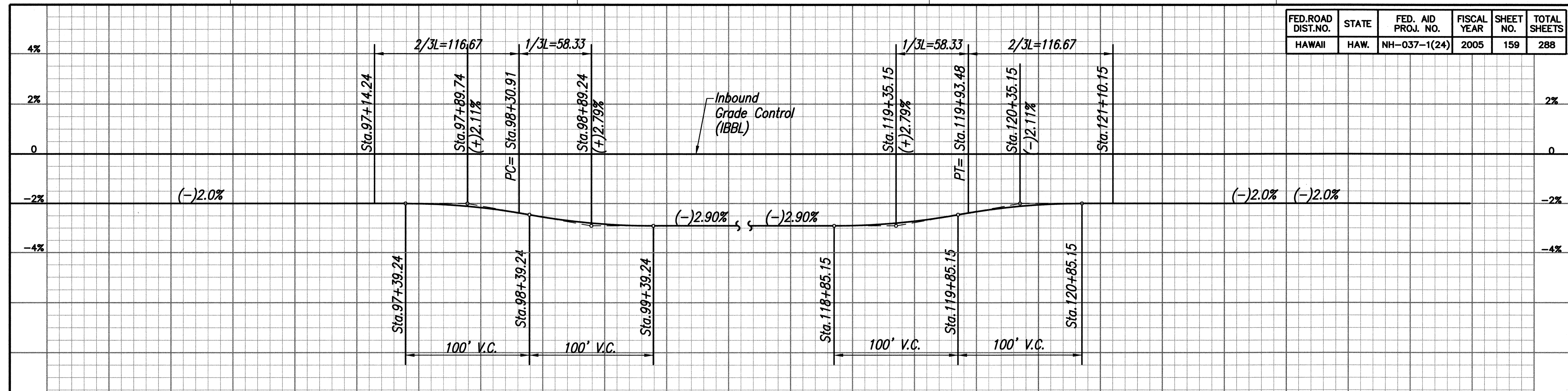
STATE OF HAWAII  
 DEPARTMENT OF TRANSPORTATION  
 HIGHWAYS DIVISION

**SUPERELEVATION DIAGRAM**  
 HALEAKALA HIGHWAY  
 HALEAKALA HIGHWAY WIDENING, PHASE 2  
 HANA HIGHWAY TO PUKALANI BYPASS  
 FED. AID PROJ. NO. NH-037-1(24)

SCALE: AS NOTED DATE: MAY, 2005

\\ESH-1\ESH\Engineering\Projects\194\04-06 Haleakala Hwy\Phase 2 - ASBUILT\TSDT 188-ASBUILT\_Super-Profile1.dwg, Model, 9/15/2009 10:02:55 AM, 1:40

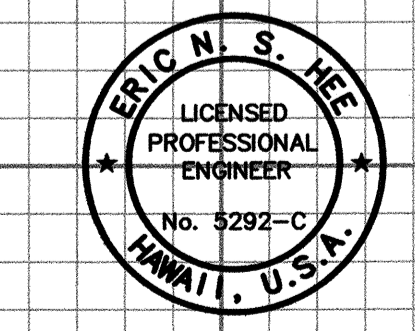
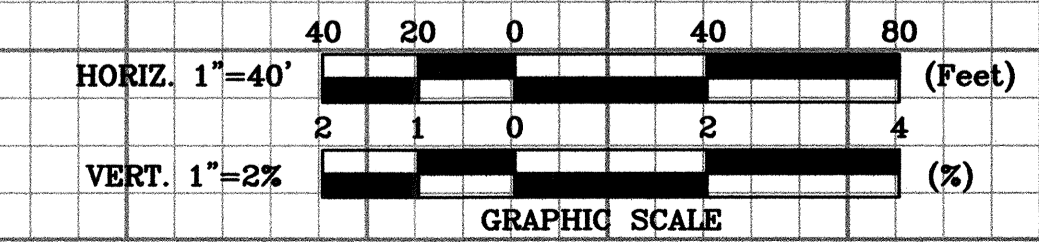
FED. ROAD DIST. NO.	STATE	FED. AID PROJ. NO.	FISCAL YEAR	SHEET NO.	TOTAL SHEETS
HAWAII	HAW.	NH-037-1(24)	2005	159	288



**INBOUND LANES - CURVE D**  
 PC STA. 98+30.91 TO PT STA. 119+93.48  
 SCALE: HORIZ. : 1" = 40'  
 VERT. : 1" = 2%

SURVEY PLOTTED BY	DATE
DRAWN BY	
DESIGNED BY	
QUANTITIES BY	
CHECKED BY	
NO.	

194-56. F:Super-Profile2 ESH-1/.../Phase 2/Working Folder: 1=40 06/07/05 AMR



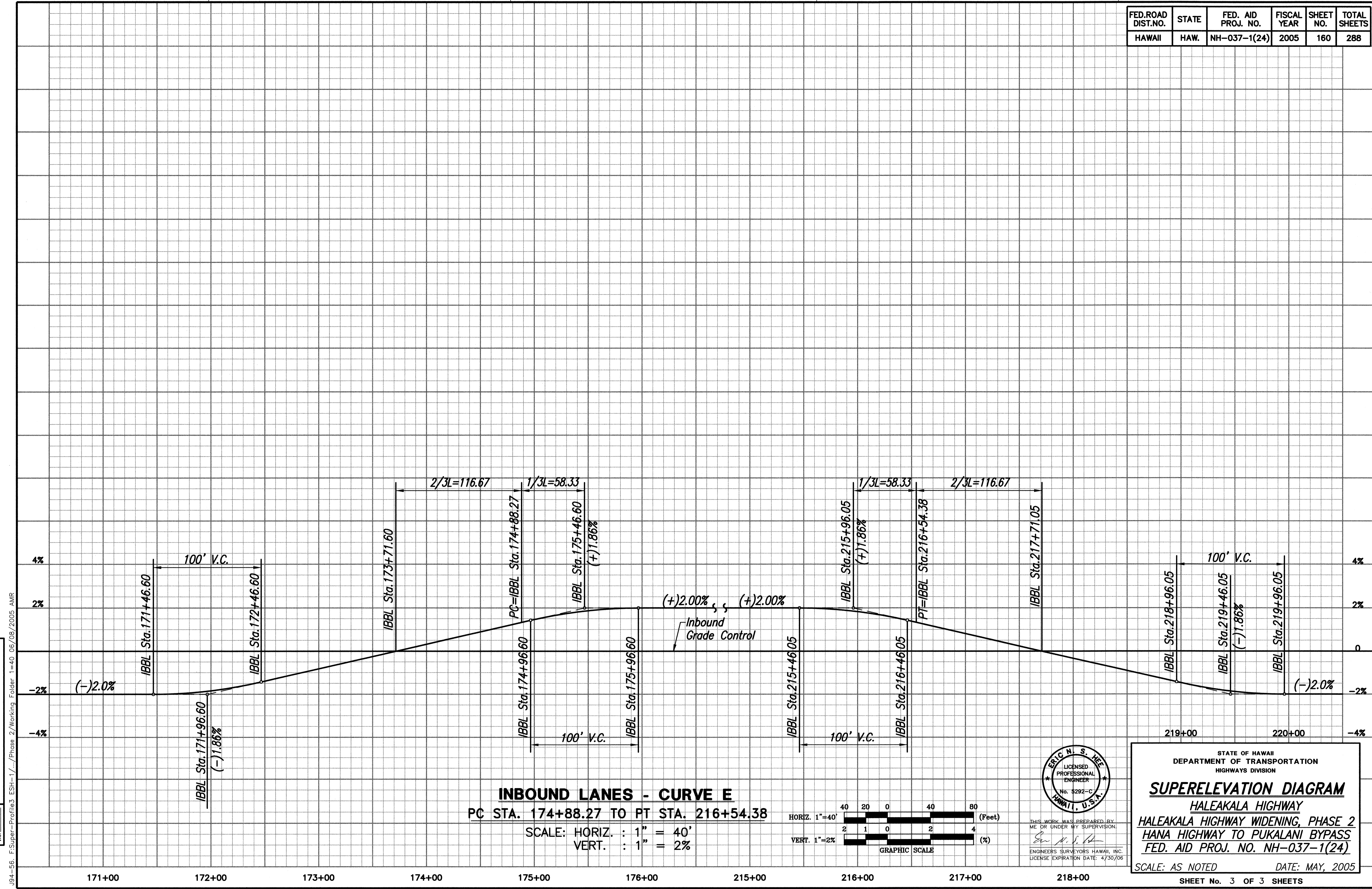
THIS WORK WAS PREPARED BY ME OR UNDER MY SUPERVISION.  
 ENGINEERS SURVEYORS HAWAII, INC.  
 LICENSE EXPIRATION DATE: 4/30/06

STATE OF HAWAII  
 DEPARTMENT OF TRANSPORTATION  
 HIGHWAYS DIVISION

**SUPERELEVATION DIAGRAM**  
 HALEAKALA HIGHWAY  
 HALEAKALA HIGHWAY WIDENING, PHASE 2  
 HANA HIGHWAY TO PUKALANI BYPASS  
 FED. AID PROJ. NO. NH-037-1(24)

SCALE: AS NOTED      DATE: MAY, 2005

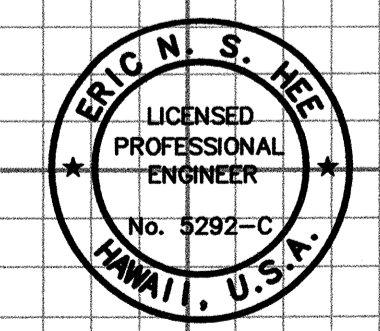
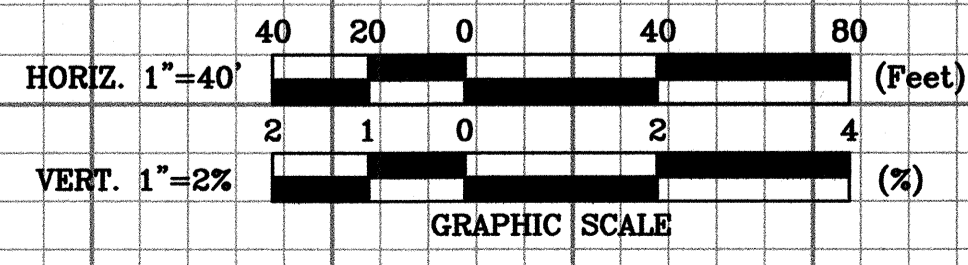
FED. ROAD DIST. NO.	STATE	FED. AID PROJ. NO.	FISCAL YEAR	SHEET NO.	TOTAL SHEETS
HAWAII	HAW.	NH-037-1(24)	2005	160	288



ORIGINAL PLAN  
 SURVEY PLOTTED BY \_\_\_\_\_ DATE \_\_\_\_\_  
 DRAWN BY \_\_\_\_\_  
 NOTE BOOK \_\_\_\_\_  
 DESIGNED BY \_\_\_\_\_  
 QUANTITIES BY \_\_\_\_\_  
 CHECKED BY \_\_\_\_\_  
 No. \_\_\_\_\_

104-56. E:Super-Profile3 ESH-1/.../Phase 2/Working Folder 1=40 06/08/2005 AMR

**INBOUND LANES - CURVE E**  
 PC STA. 174+88.27 TO PT STA. 216+54.38  
 SCALE: HORIZ. : 1" = 40'  
 VERT. : 1" = 2%



THIS WORK WAS PREPARED BY ME OR UNDER MY SUPERVISION.  
 Eric N. S. Hee  
 ENGINEERS SURVEYORS HAWAII, INC.  
 LICENSE EXPIRATION DATE: 4/30/06

STATE OF HAWAII  
 DEPARTMENT OF TRANSPORTATION  
 HIGHWAYS DIVISION  
**SUPERELEVATION DIAGRAM**  
 HALEAKALA HIGHWAY  
 HALEAKALA HIGHWAY WIDENING, PHASE 2  
 HANA HIGHWAY TO PUKALANI BYPASS  
 FED. AID PROJ. NO. NH-037-1(24)  
 SCALE: AS NOTED DATE: MAY, 2005  
 SHEET No. 3 OF 3 SHEETS