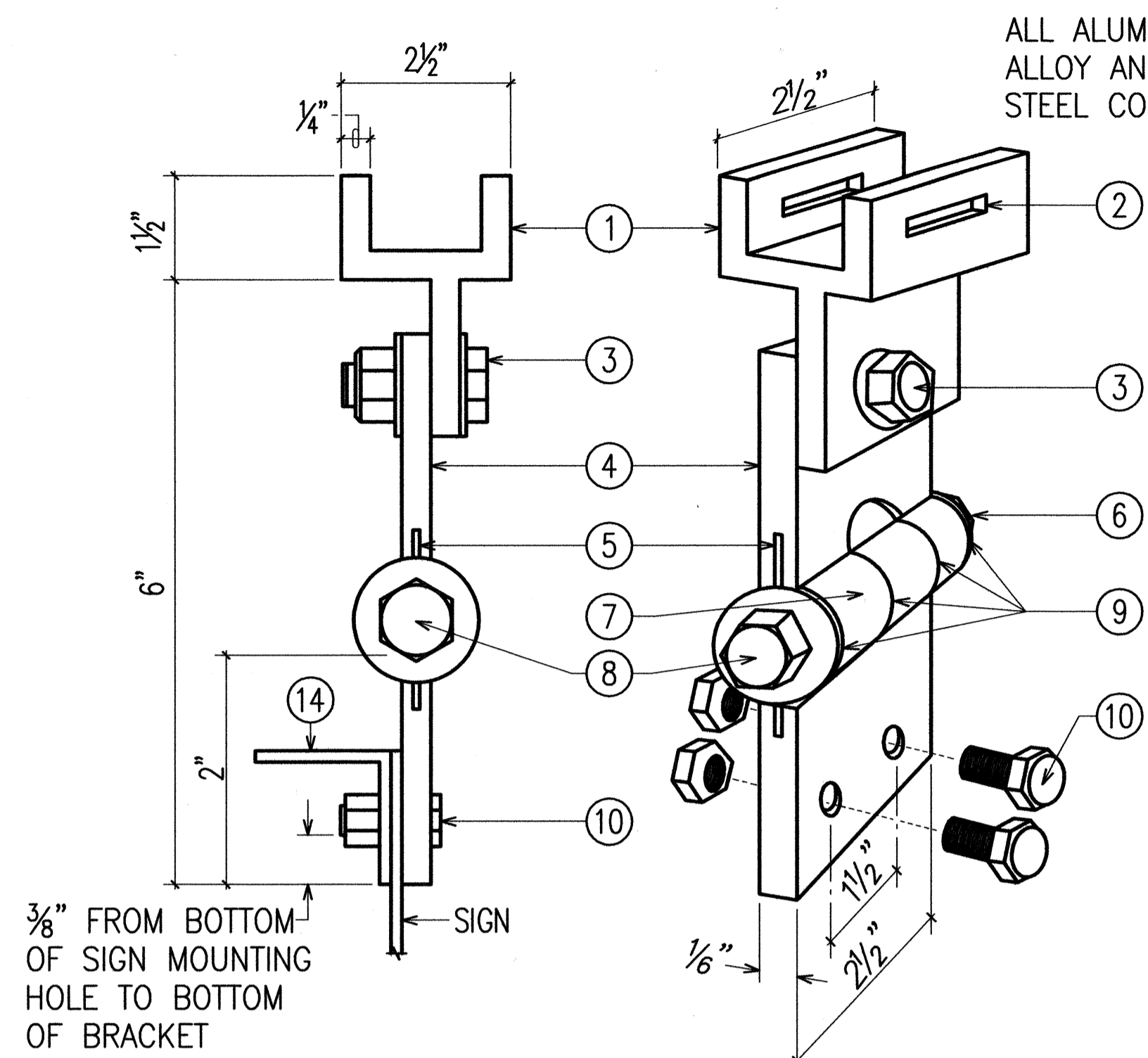


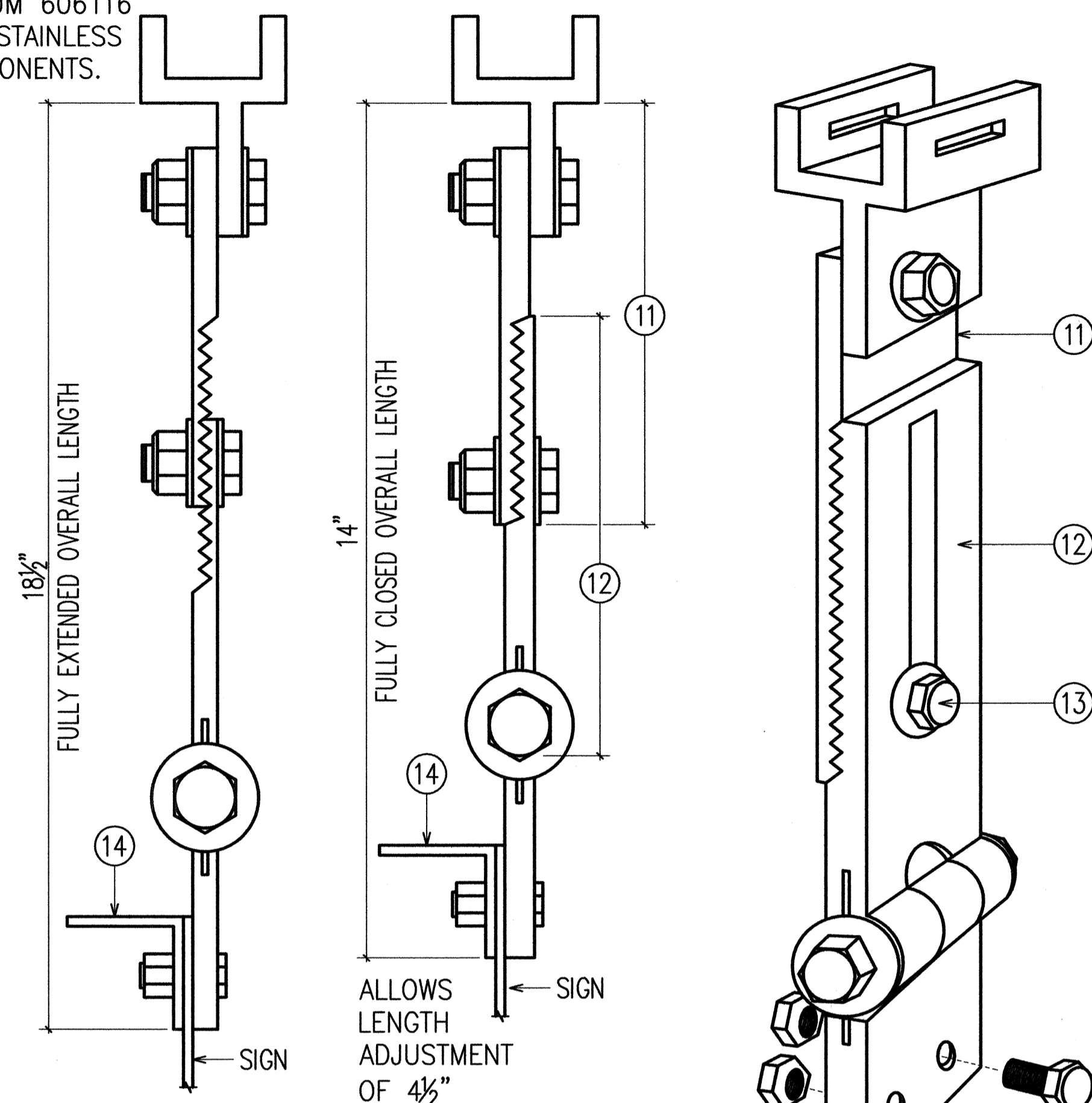
FED. ROAD DIST. NO.	STATE	FED. AID PROJ. NO.	FISCAL YEAR	SHEET NO.	TOTAL SHEETS
HAWAII	HAW.	NH-037-1(24)	2005	157	288



FIXED LENGTH NON-ADJUSTABLE SWING SIGN BRACKET

- ① PIVOTAL UPPER BRACKET
 - ② 1 5/8" X 1/4" SLOT FOR DOUBLE STRAPPING TO ELECTROLIER MAST ARM. (M2G-34S(HD) .030" X 3/4" HEAVY DUTY STAINLESS STEEL STRAP WITH M2G-34B(HD) BUCKLE RECOMMENDED.)
 - ③ 1/2" - 13 X 1 1/2" STAINLESS STEEL HEX HEAD BOLT WITH STAINLESS STEEL HEX LOCK NUT AND 1/16" STAINLESS STEEL WASHER (BOTH SIDES). ALLOWS UPPER BRACKET TO PIVOT AND ALIGN WITH ELECTROLIER MAST ARM.
 - ④ 6" OVERALL DROP WITH FIXED LENGTH SIGN BRACKET.
 - ⑤ STAINLESS STEEL DAMPENER SPRING (REMOVABLE)
 - ⑥ STAINLESS STEEL HEX LOCK NUT WITH 1/16" STAINLESS STEEL WASHER
 - ⑦ 1" O.D. AXLE HOUSING
 - ⑧ 1/2" - 13 X 4" STAINLESS STEEL HEX HEAD BOLT WITH ~1" STAINLESS STEEL WASHER
 - ⑨ OILITE BUSHING
 - ⑩ SIGN MOUNTING SETS, CONSISTING OF TWO EACH 5/16" - 18 X 1" STAINLESS STEEL HEX HEAD BOLT WITH STAINLESS STEEL HEX LOCK NUT. TWO HOLES ON 1 1/2" CENTERS PROVIDE POSITIVE LOCK SIGN MOUNTING TO BRACKET.
 - ⑪ 8 1/4" OVERALL LENGTH UPPER ADJUSTABLE SIGN BRACKET SECTION
 - ⑫ 9" OVERALL LENGTH LOWER ADJUSTABLE SIGN BRACKET SECTION, INCLUDING AXLE HOUSING (8" OVERALL LENGTH TO TOP OF AXLE HOUSING)
 - ⑬ 1/2" - 13 X 1 1/2" STAINLESS STEEL HEX BOLT WITH STAINLESS STEEL HEX LOCK NUT AND ~1" STAINLESS STEEL WASHERS (BOTH SIDES). LOOSEN LOCK NUT, ADJUST BRACKET TEETH TO LEVEL SIGN.
 - ⑭ 1 1/4" X 1 1/4" X 1/8" ALUMINUM ANGLE
- NOTE: DIMENSIONS MAY VARY SLIGHTLY.

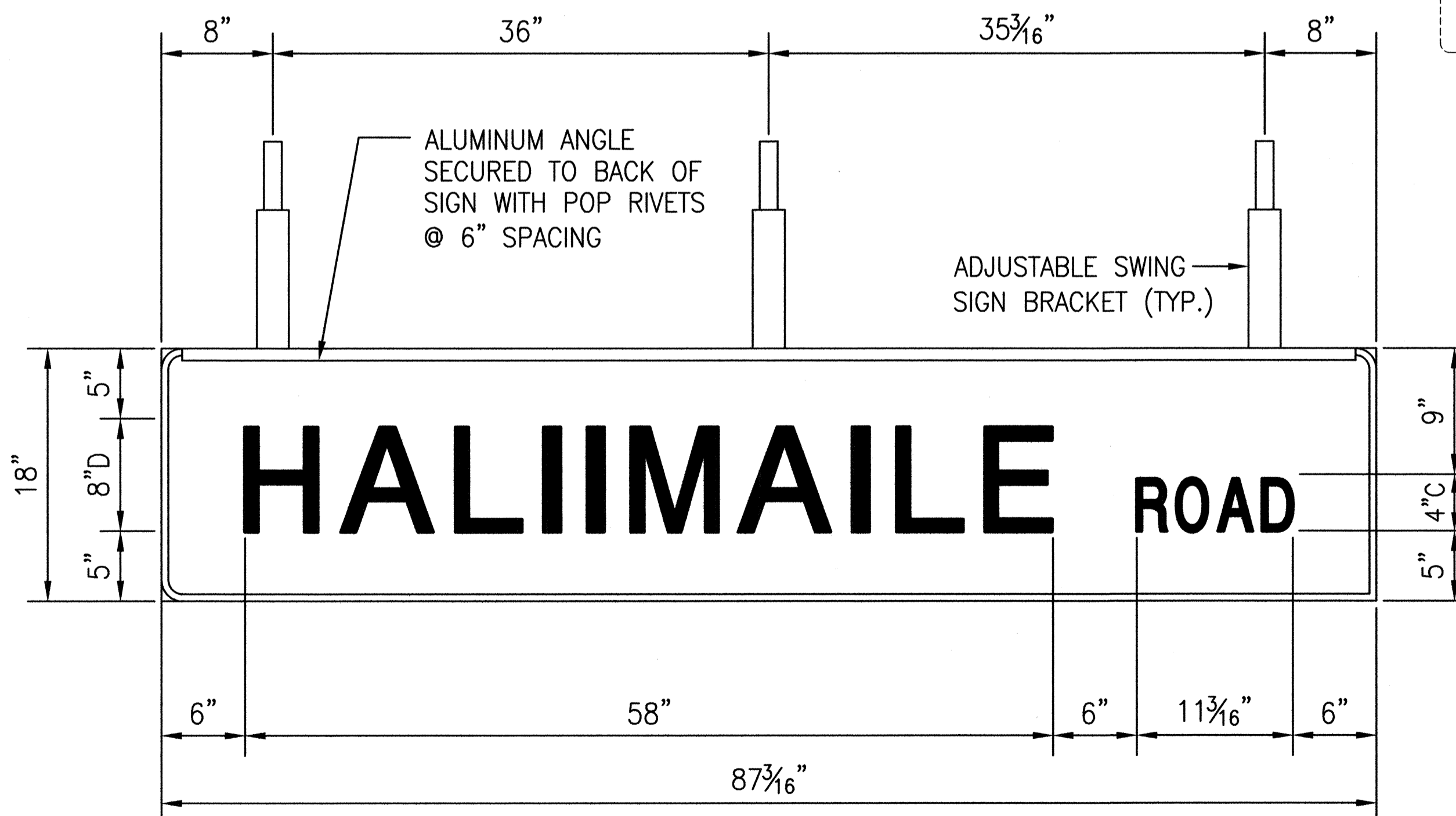
ALL ALUMINUM 6061T6 ALLOY AND STAINLESS STEEL COMPONENTS.



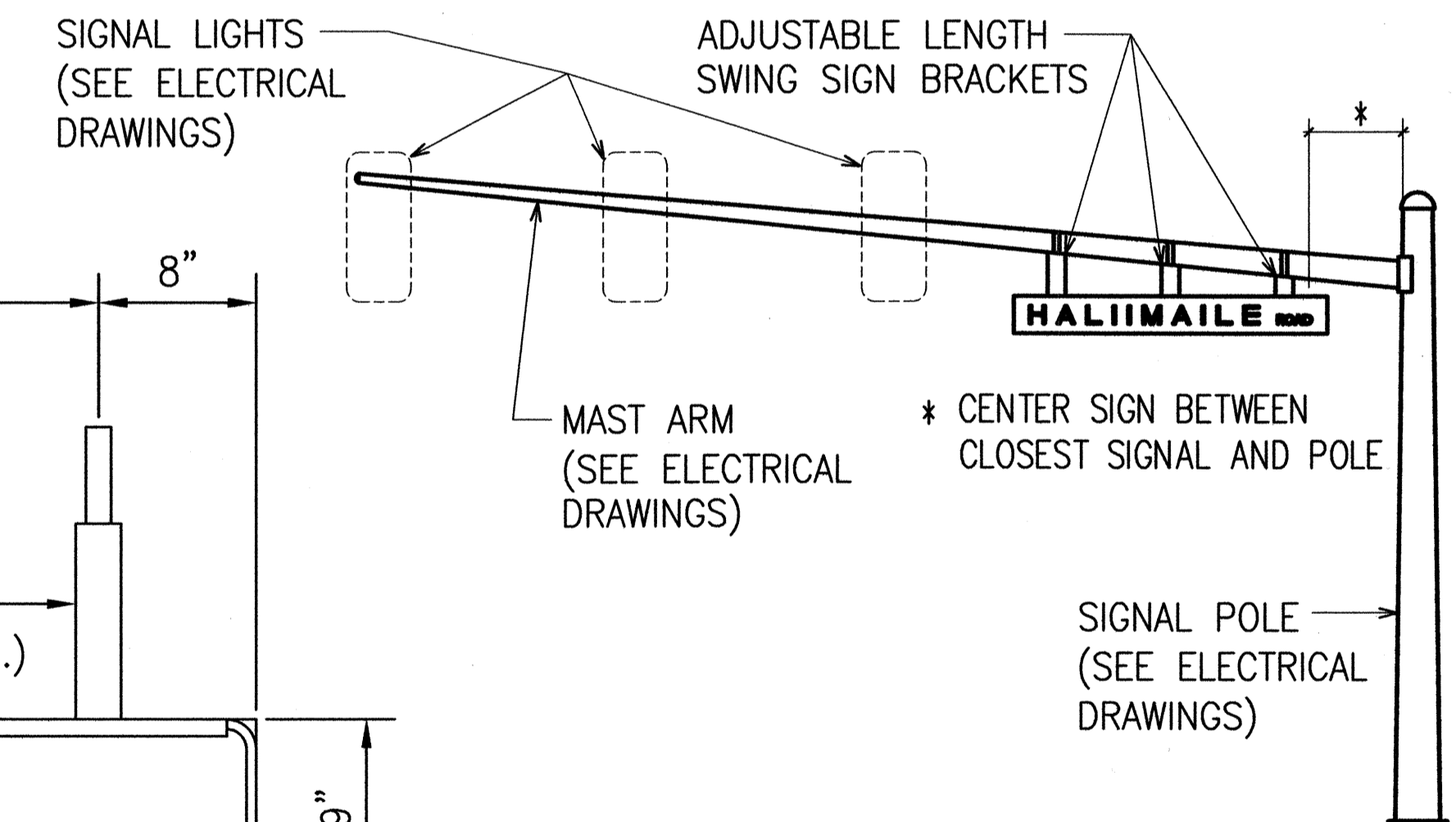
ADJUSTABLE LENGTH SWING SIGN BRACKET

NOTES:

1. SIGN D3-1 SHALL BE NEW STREET NAME SIGNS. THE CONTRACTOR SHALL PROVIDE THE SAME MESSAGE ON THE FRONT AND BACK SIDE OF THE SIGN. PAYMENT WILL NOT BE MADE SEPARATELY BUT SHALL BE CONSIDERED AS ONE UNIT.
2. COLORS:
LEGEND - WHITE (REFLECTORIZED)
BACKGROUND - GREEN (REFLECTORIZED)
3. ALL PANELS SHALL BE REFLECTORIZED WITH TYPE B REFLECTIVE SHEETING IN ACCORDANCE WITH SECTION 712.20 OF THE STANDARD SPECIFICATIONS.
4. BORDERS AND MESSAGES SHALL CONFORM TO DETAILS AS SHOWN ON THE PLANS AND AS SPECIFIED IN THE MUTCD.
5. SIGN MOUNTING BRACKETS, ALUMINUM ANGLE, FIXTURES, FASTENERS, AND ALL NECESSARY HARDWARE, AND EQUIPMENT, TOOLS, LABOR, MATERIALS AND OTHER INCIDENTALS FOR INSTALLATION, WILL NOT BE PAID FOR SEPARATELY BUT SHALL BE CONSIDERED INCIDENTAL TO STREET NAME SIGN INSTALLATION.
6. MAXIMUM SPACING BETWEEN SWING SIGN BRACKETS WILL BE 3'-0".
7. ALL SIGNS SHALL CONFORM TO SECTION 621 OF THE STANDARD SPECIFICATIONS AND THE LATEST EDITIONS AND AMENDMENTS OF THE FOLLOWING FHWA PUBLICATIONS:
 - a. "MANUAL ON UNIFORM TRAFFIC CONTROL DEVICES FOR STREETS AND HIGHWAYS" (MUTCD)
 - b. "STANDARD HIGHWAY SIGNS"
 - c. "STANDARD ALPHABETS FOR HIGHWAY SIGNS"



**D3-1 (REAR VIEW)
TYPICAL PANEL & SWING BRACKET LAYOUT
FOR STREET NAME SIGN**



STREET NAME SIGN MOUNTING ON MAST ARM



THIS WORK WAS PREPARED BY ME OR UNDER MY SUPERVISION.
Eric N. S. Hee
ENGINEERS SURVEYORS HAWAII, INC.
LICENSE EXPIRATION DATE: 4/30/08

STATE OF HAWAII
DEPARTMENT OF TRANSPORTATION
HIGHWAYS DIVISION
**STREET NAME SIGN ON
TRAFFIC SIGNAL MAST ARM**
HALEAKALA HIGHWAY WIDENING, PHASE 2
HANA HIGHWAY TO PUKALANI BYPASS
FED. AID PROJ. NO. NH-037-1(24)
SCALE: AS NOTED DATE: SEP., 2005
SHEET No. 1 OF 1 SHEETS

SURVEY PLOTTED BY	DATE
DRAWN BY	
DESIGNED BY	
QUANTITIES BY	
CHECKED BY	
ORIGINAL PLAN	
NOTE BOOK	
No.	

\\Len-1\esh\Engineering\Projects\1994\194-256\Haleakala Hwy\PHASE 2\WORKING\OLDER STREET NAME.dwg, Oct 03 2005 - 3:41pm