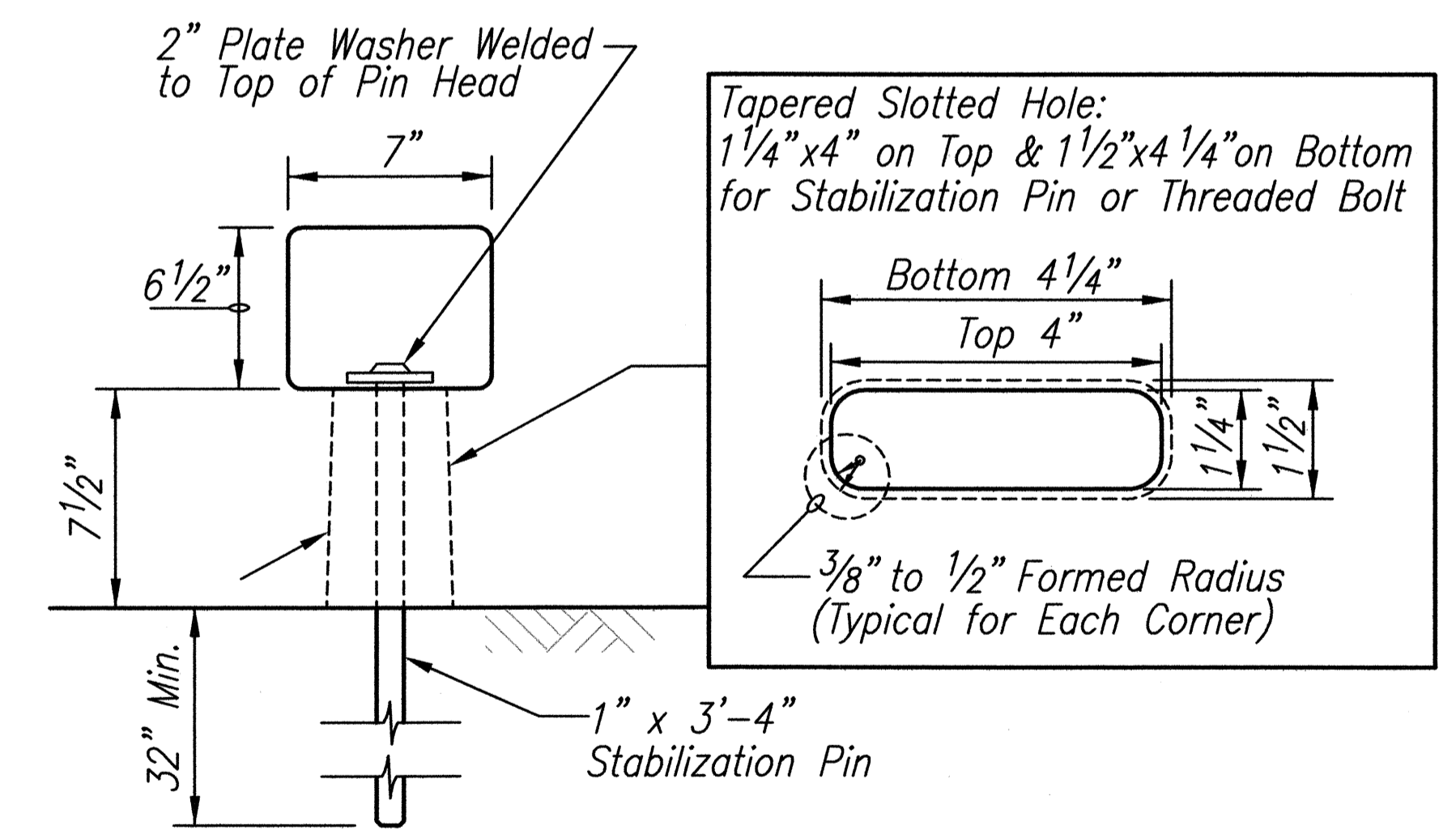
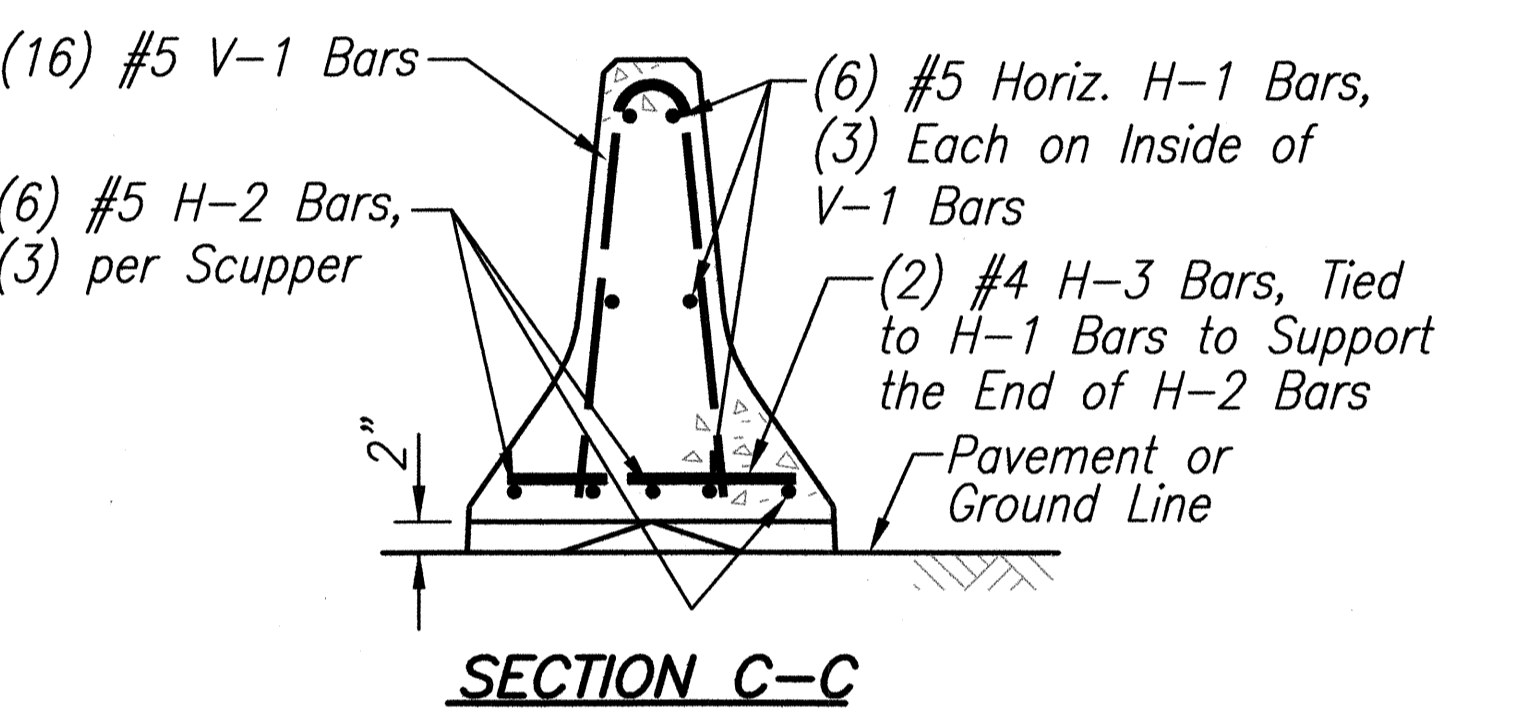
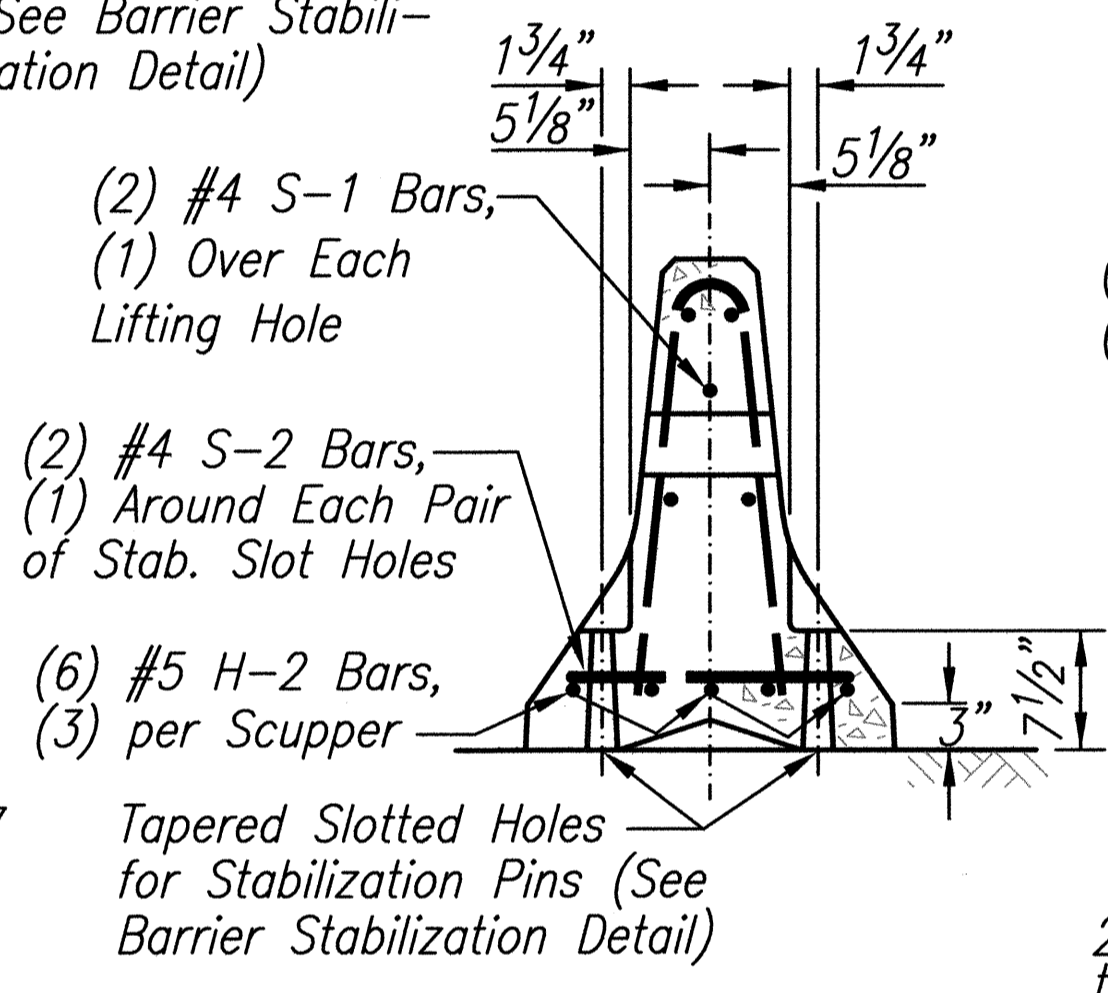
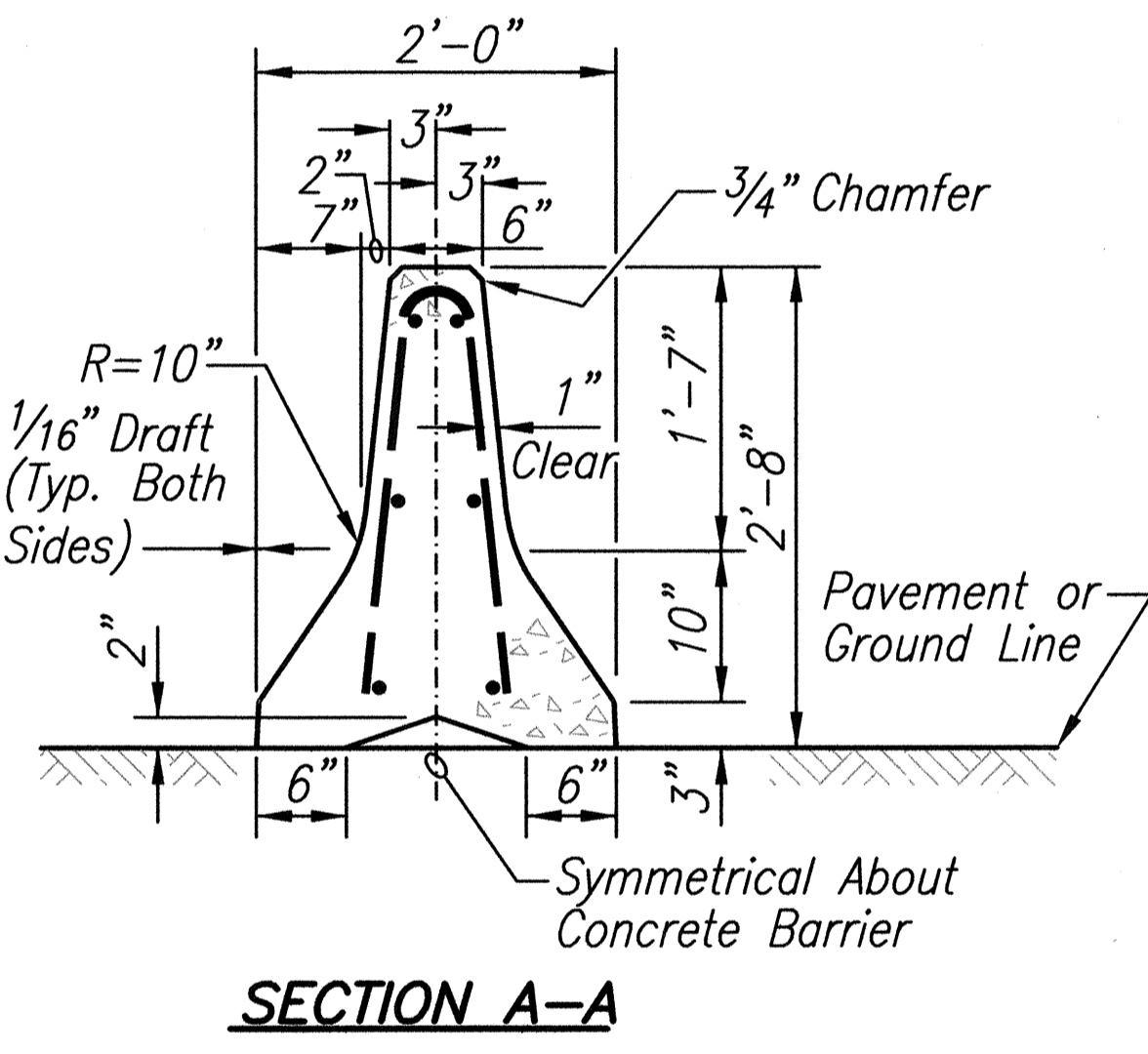
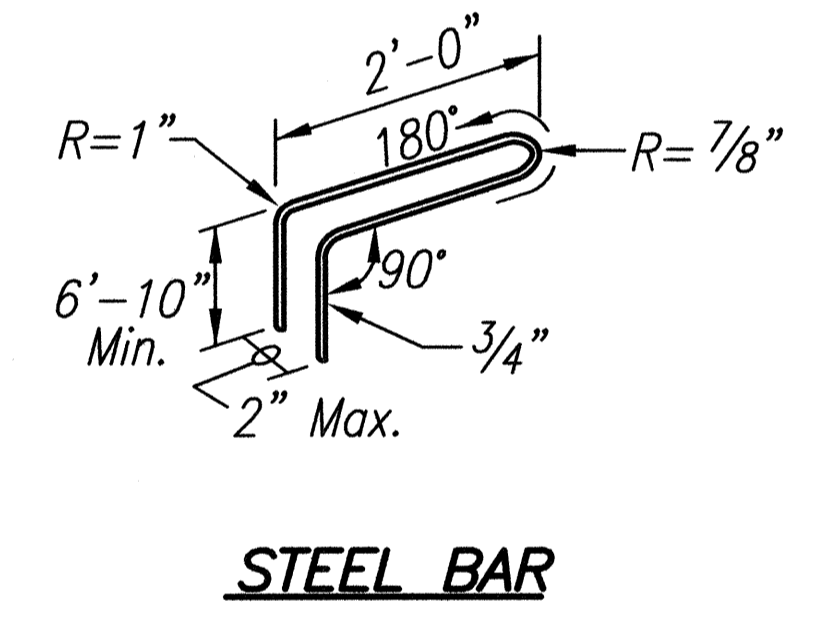
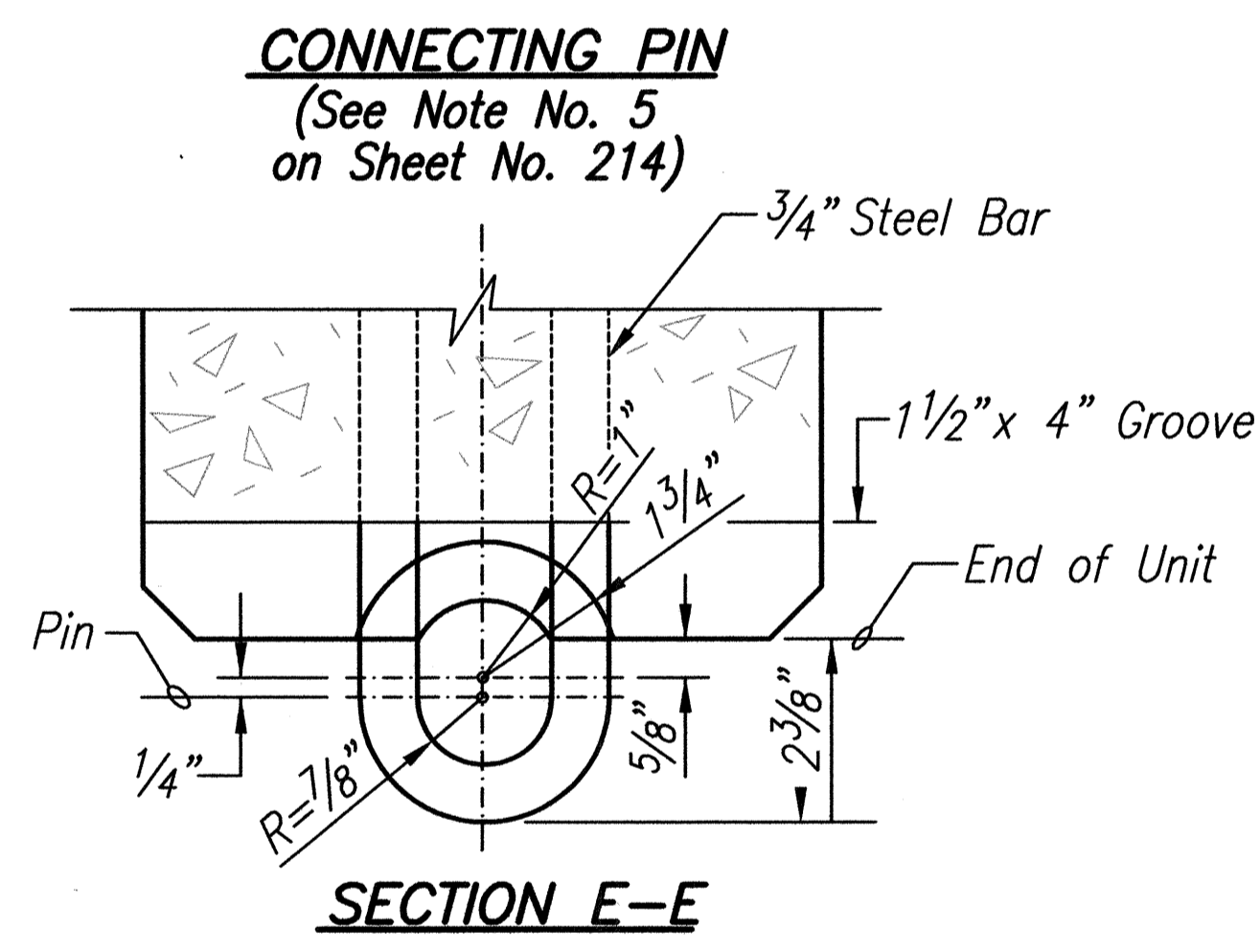
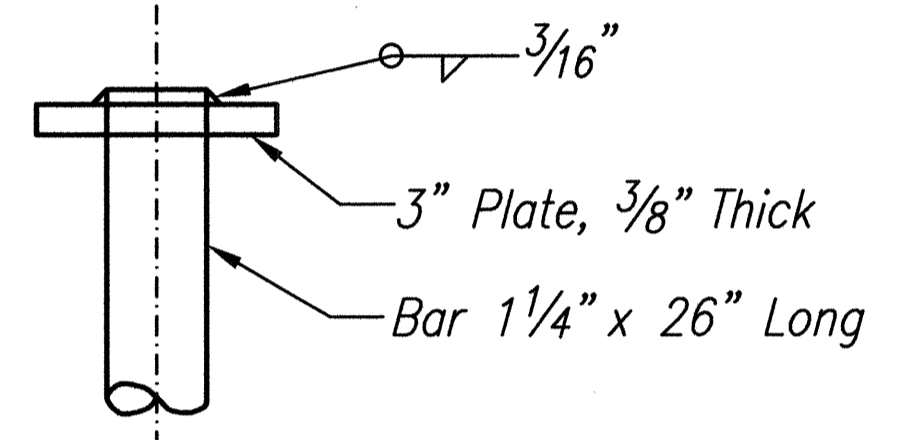
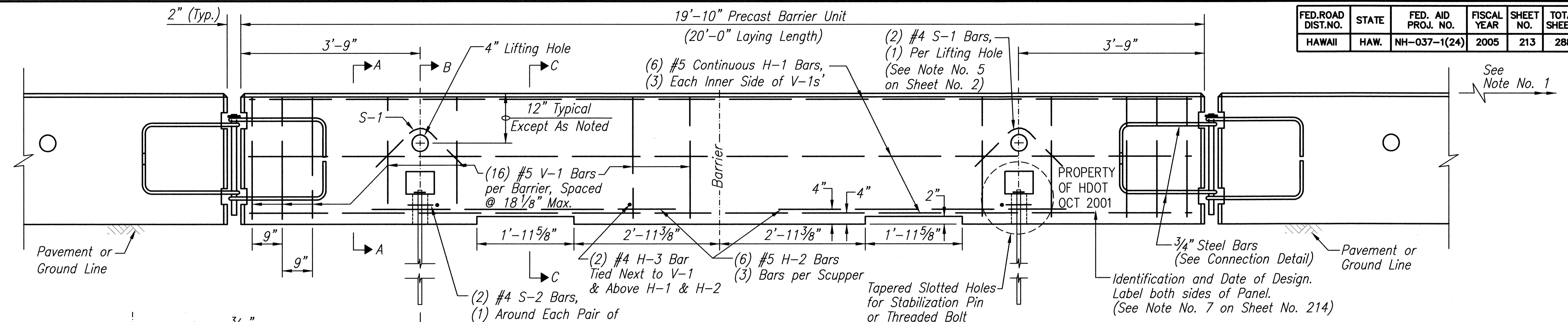
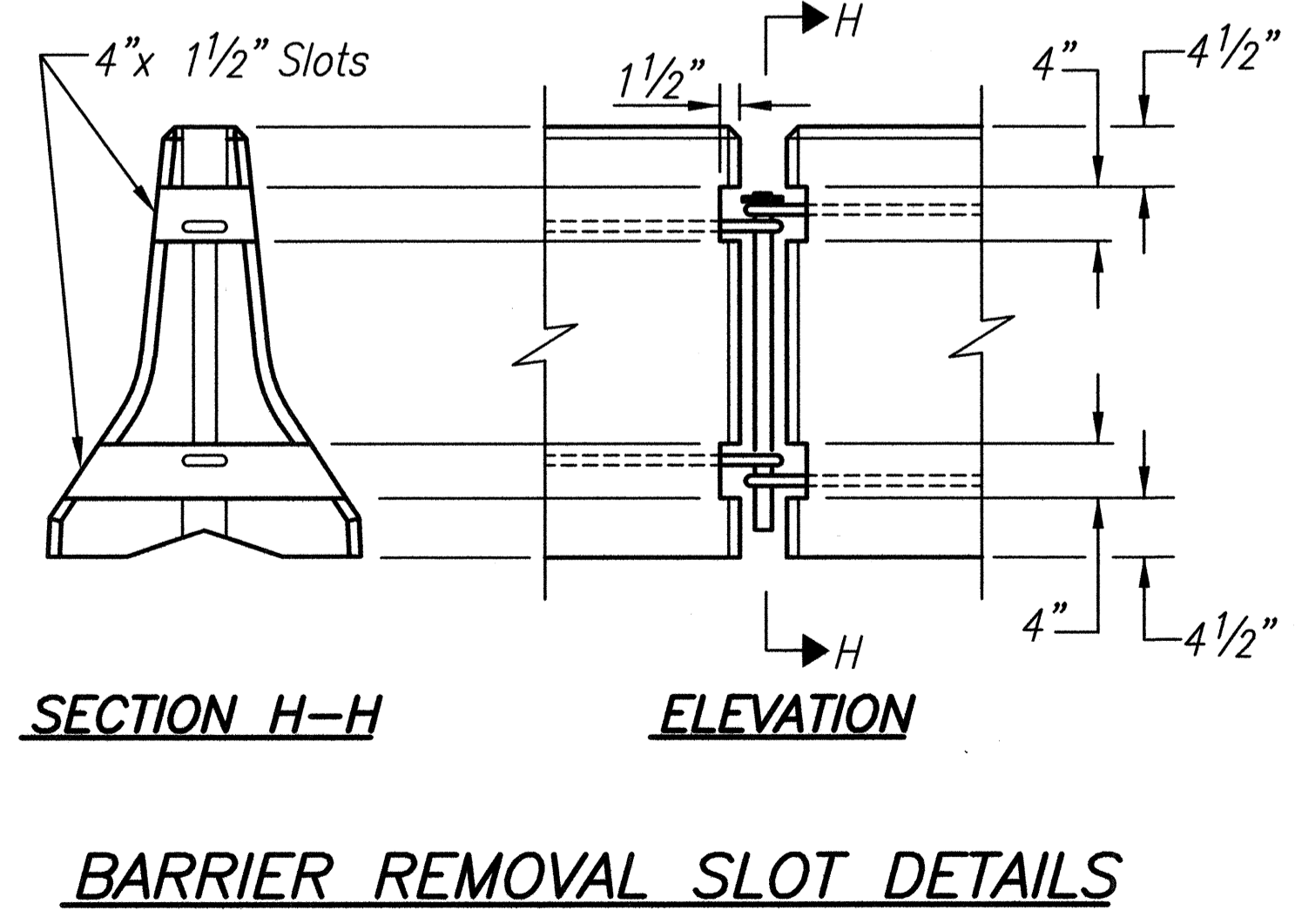
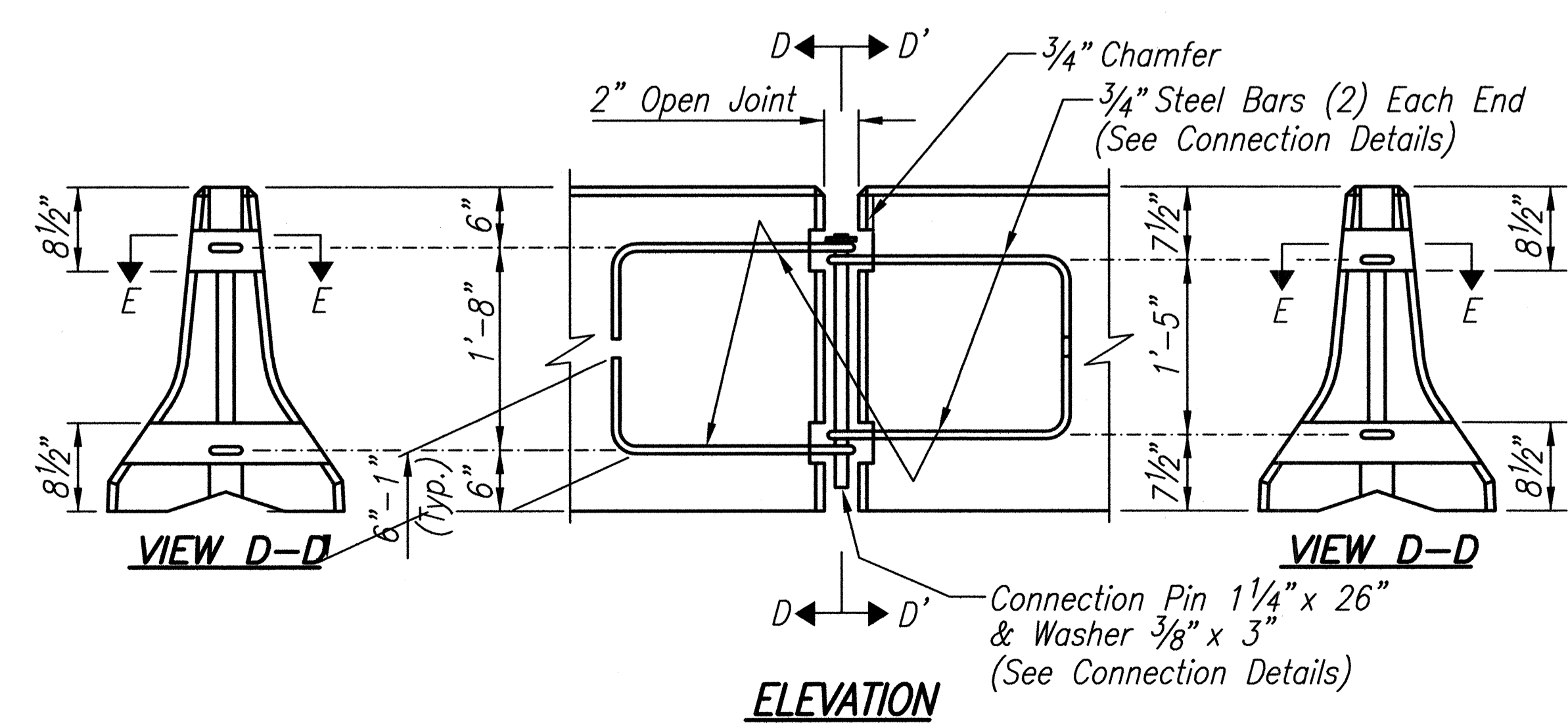


FED. ROAD DIST. NO.	STATE	FED. AID PROJ. NO.	FISCAL YEAR	SHEET NO.	TOTAL SHEETS
HAWAII	HAW.	NH-037-1(24)	2005	213	288

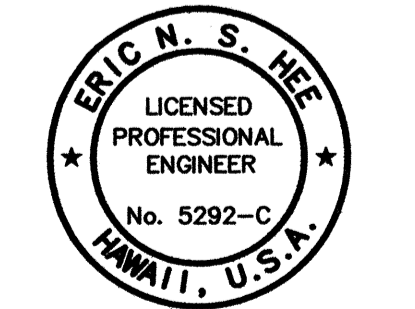


CONNECTION DETAILS
 (See Note No. 5 on Sheet No. 2)



DATE _____
 SURVEY PLOTTED BY _____
 DRAWN BY _____
 DESIGNED BY _____
 CHECKED BY _____
 QUANTITIES BY _____
 ORIGINAL PLAN _____
 NOTE BOOK _____
 No. _____

11 E:\11\enr\Engineering\Projects\1994-1995\Hawaii\Phase 2\HAWAII\CONCRETE\PORTABLE-Barrier.dwg Tue, Oct 04, 2005 - 8:18am
 AIG



THIS WORK WAS PREPARED BY ME OR UNDER MY SUPERVISION.
 Eric N. S. Hee
 ENGINEERS SURVEYORS HAWAII, INC.
 LICENSE EXPIRATION DATE: 4/30/06

STATE OF HAWAII
 DEPARTMENT OF TRANSPORTATION
 HIGHWAYS DIVISION

PORTABLE CONCRETE BARRIER

HALEAKALA HIGHWAY WIDENING, PHASE 2
 HANA HIGHWAY TO PUKALANI BYPASS
 FED. AID PROJ. NO. NH-037-1(24)

SCALE: AS NOTED DATE: SEP., 2005

SHEET No. 1 OF 2 SHEETS

