

FED. ROAD DIST. NO.	STATE	FED. AID PROJ. NO.	FISCAL YEAR	SHEET NO.	TOTAL SHEETS
HAWAII	HAW.	NH-037-1(24)	2005	61	288

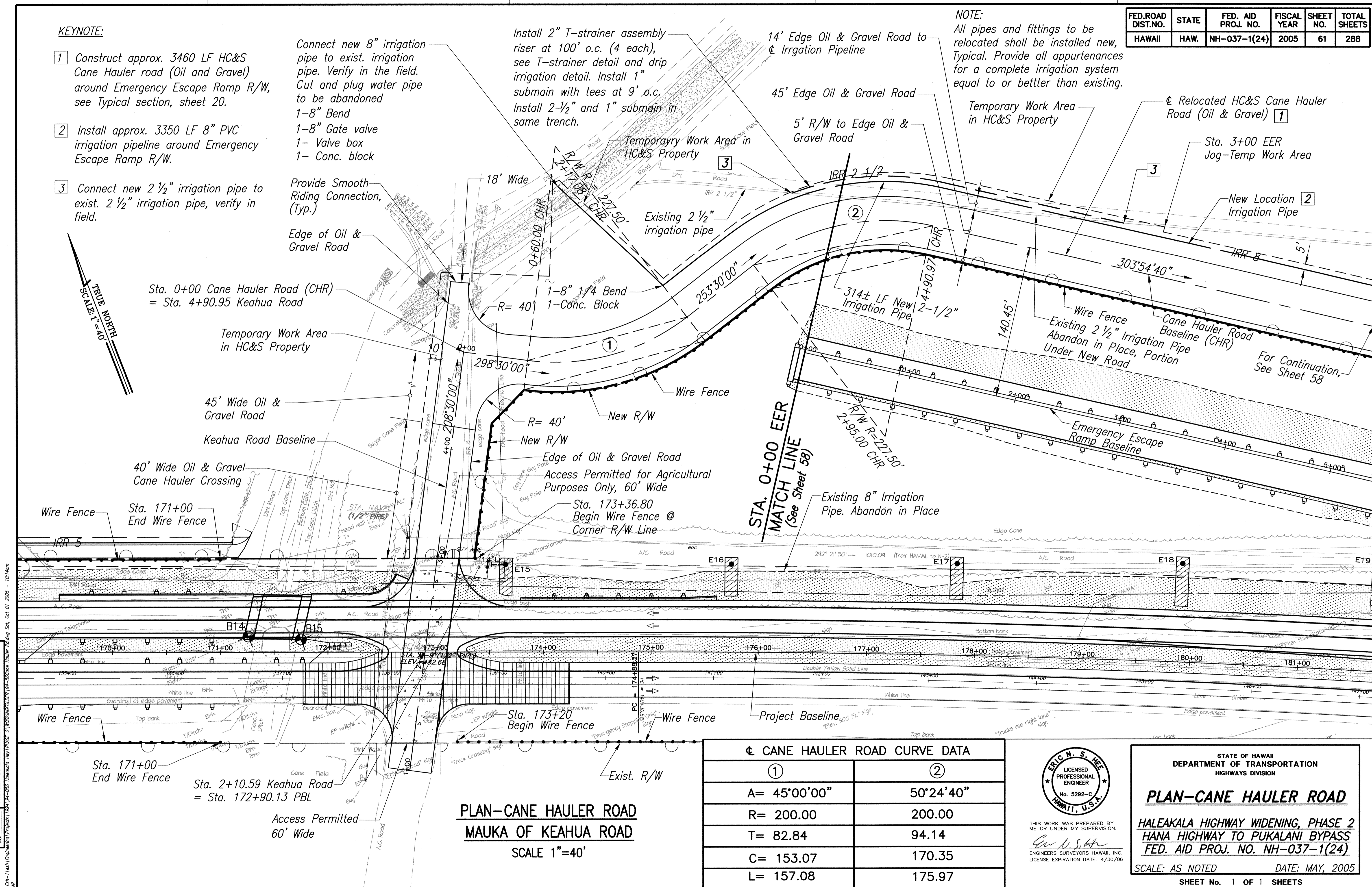
**KEYNOTE:**

- Construct approx. 3460 LF HC&S Cane Hauler road (Oil and Gravel) around Emergency Escape Ramp R/W, see Typical section, sheet 20.
- Install approx. 3350 LF 8" PVC irrigation pipeline around Emergency Escape Ramp R/W.
- Connect new 2 1/2" irrigation pipe to exist. 2 1/2" irrigation pipe, verify in field.

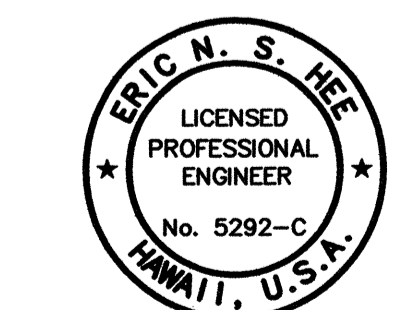
Connect new 8" irrigation pipe to exist. irrigation pipe. Verify in the field. Cut and plug water pipe to be abandoned  
 1-8" Bend  
 1-8" Gate valve  
 1- Valve box  
 1- Conc. block

Install 2" T-strainer assembly riser at 100' o.c. (4 each), see T-strainer detail and drip irrigation detail. Install 1" submain with tees at 9' o.c. Install 2-1/2" and 1" submain in same trench.

**NOTE:**  
 All pipes and fittings to be relocated shall be installed new, Typical. Provide all appurtenances for a complete irrigation system equal to or better than existing.



①	②
A= 45°00'00"	50°24'40"
R= 200.00	200.00
T= 82.84	94.14
C= 153.07	170.35
L= 157.08	175.97



THIS WORK WAS PREPARED BY ME OR UNDER MY SUPERVISION.  
 Eric N. S. Hee  
 ENGINEERS SURVEYORS HAWAII, INC.  
 LICENSE EXPIRATION DATE: 4/30/06

STATE OF HAWAII  
 DEPARTMENT OF TRANSPORTATION  
 HIGHWAYS DIVISION

**PLAN-CANE HAULER ROAD**

HALEAKALA HIGHWAY WIDENING, PHASE 2  
 HANA HIGHWAY TO PUKALANI BYPASS  
 FED. AID PROJ. NO. NH-037-1(24)

SCALE: AS NOTED DATE: MAY, 2005  
 SHEET No. 1 OF 1 SHEETS

**PLAN-CANE HAULER ROAD  
 MAUKA OF KEAHUA ROAD**  
 SCALE 1"=40'

DATE	.....
SURVEY PLOTTED BY	.....
DRAWN BY	.....
DESIGNED BY	.....
NOTE BOOK	.....
QUANTITIES BY	.....
CHECKED BY	.....
No.	.....

11/24/05 (Rev. 1) Engineering Projects 11/24/05 HAWAIIAN ENGINEERS SURVEYORS HAWAII, INC.