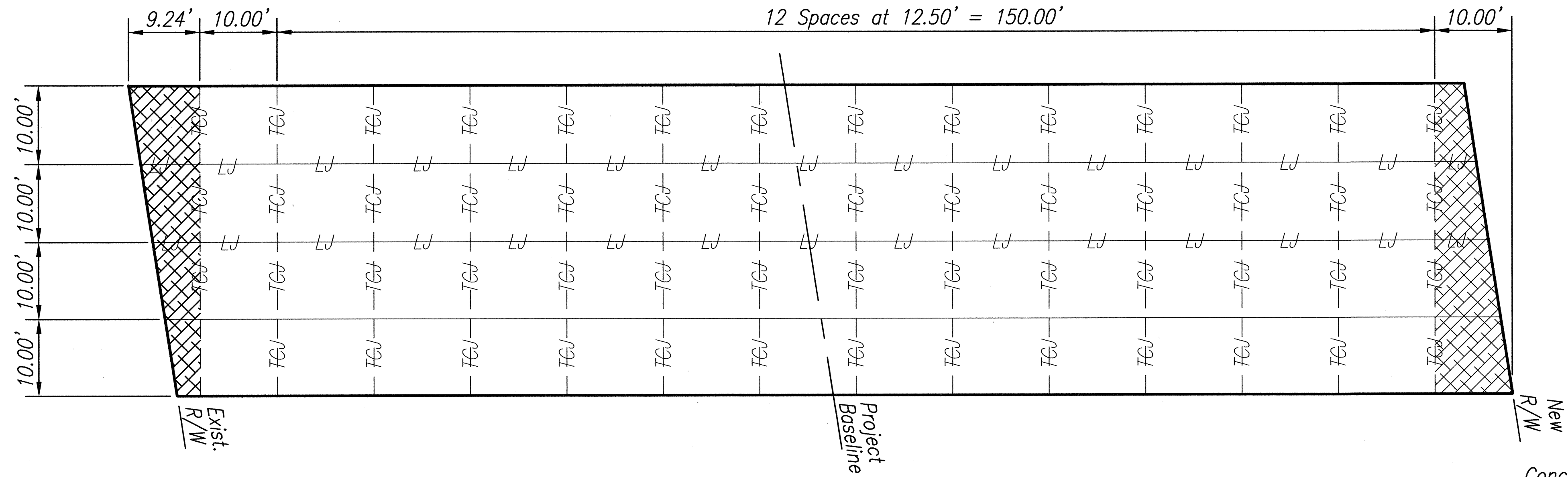


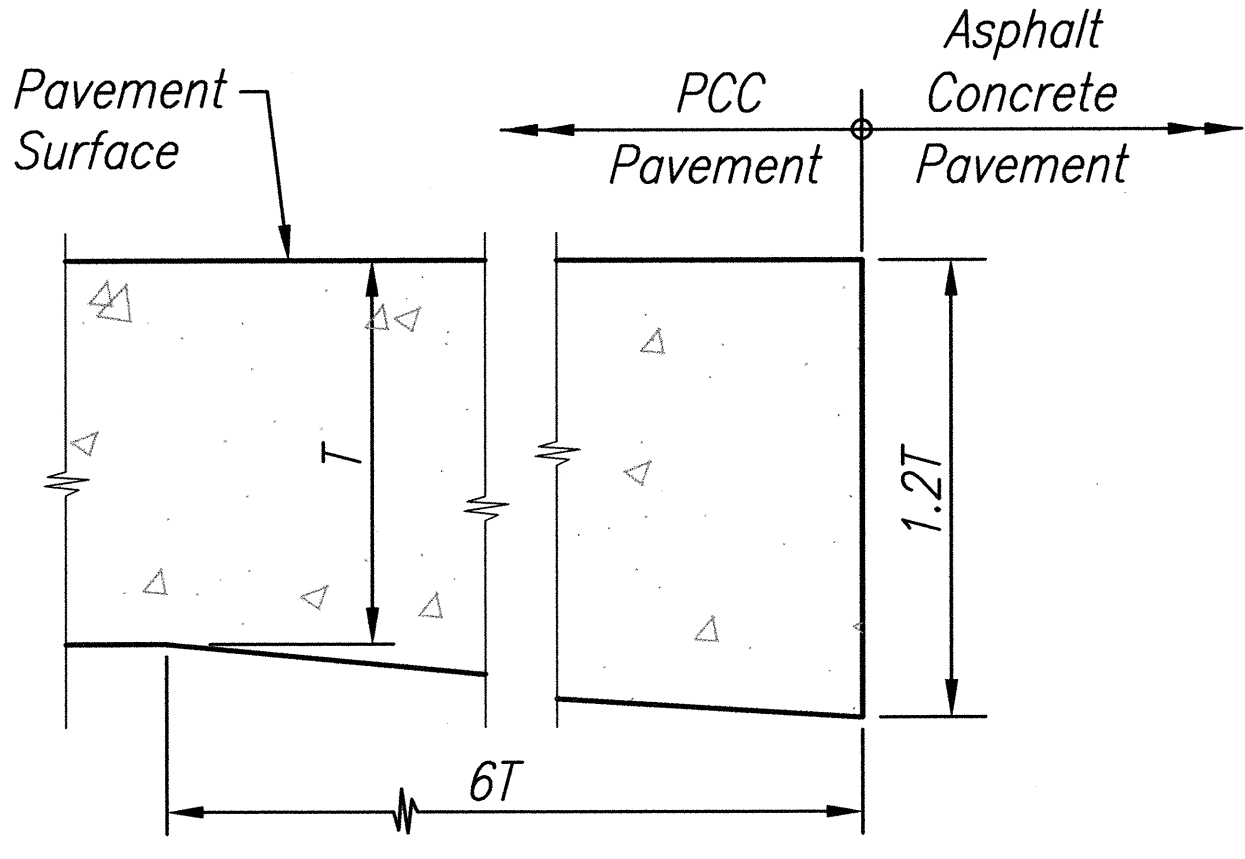
FED. ROAD DIST. NO.	STATE	FED. AID PROJ. NO.	FISCAL YEAR	SHEET NO.	TOTAL SHEETS
HAWAII	HAW.	NH-037-1(24)	2004	96	288



**Legend:**  
 Odd Shaped Block Reinforcing: #4 Bars @ 15" o.c. Both Ways

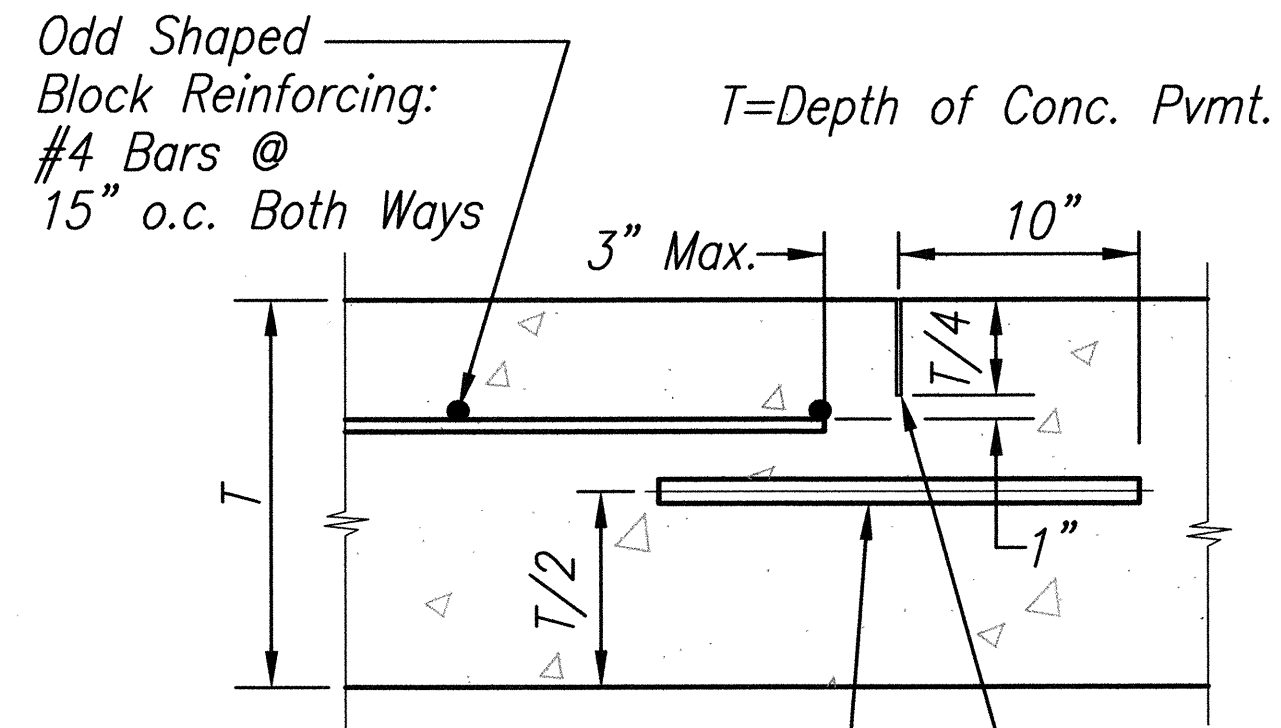
**JOINTING PLAN (KEAHUA ROAD CROSSING)**

Scale: 1"=10'



T=Depth of Conc. Pvmt.

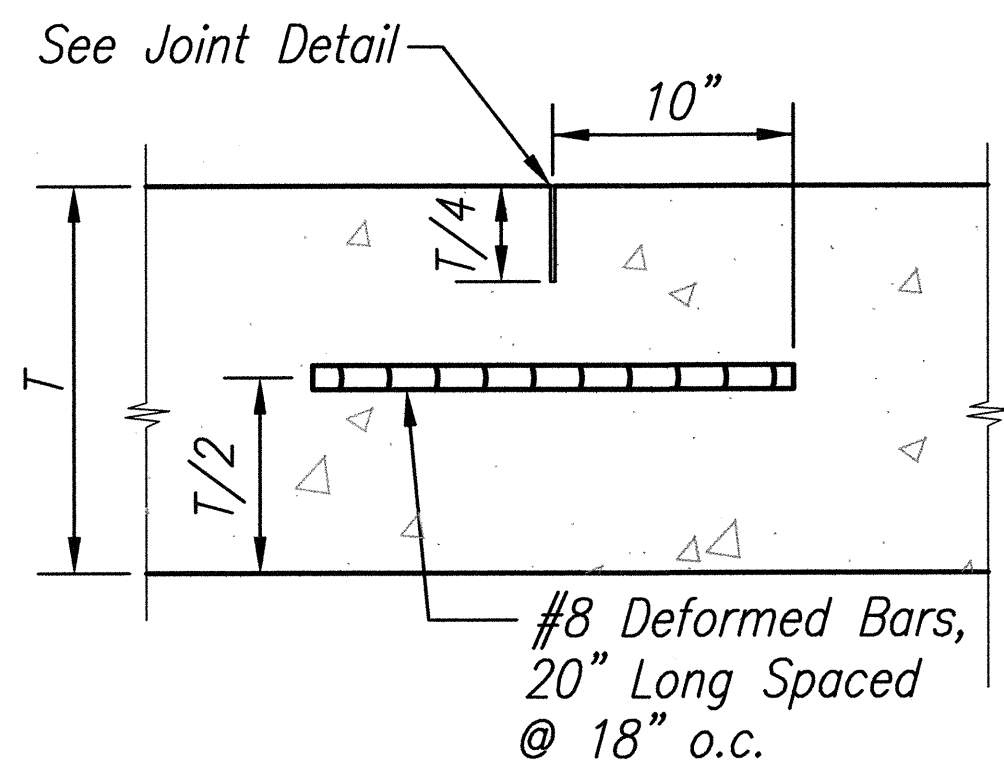
**THICKENED EDGE**  
 Scale: 1 1/2" = 1'-0"



#8 Smooth Steel Dowels 20" Long Spaced @ 18" o.c. Apply a Thin Uniform Coat of Form Oil Parafin Based Lubricant or an Asphalt Emulsion Over Entire Dowel

**TRANSVERSE CONTRACTION JOINT (TCJ)**

SCALE : 1 1/2" = 1'-0"



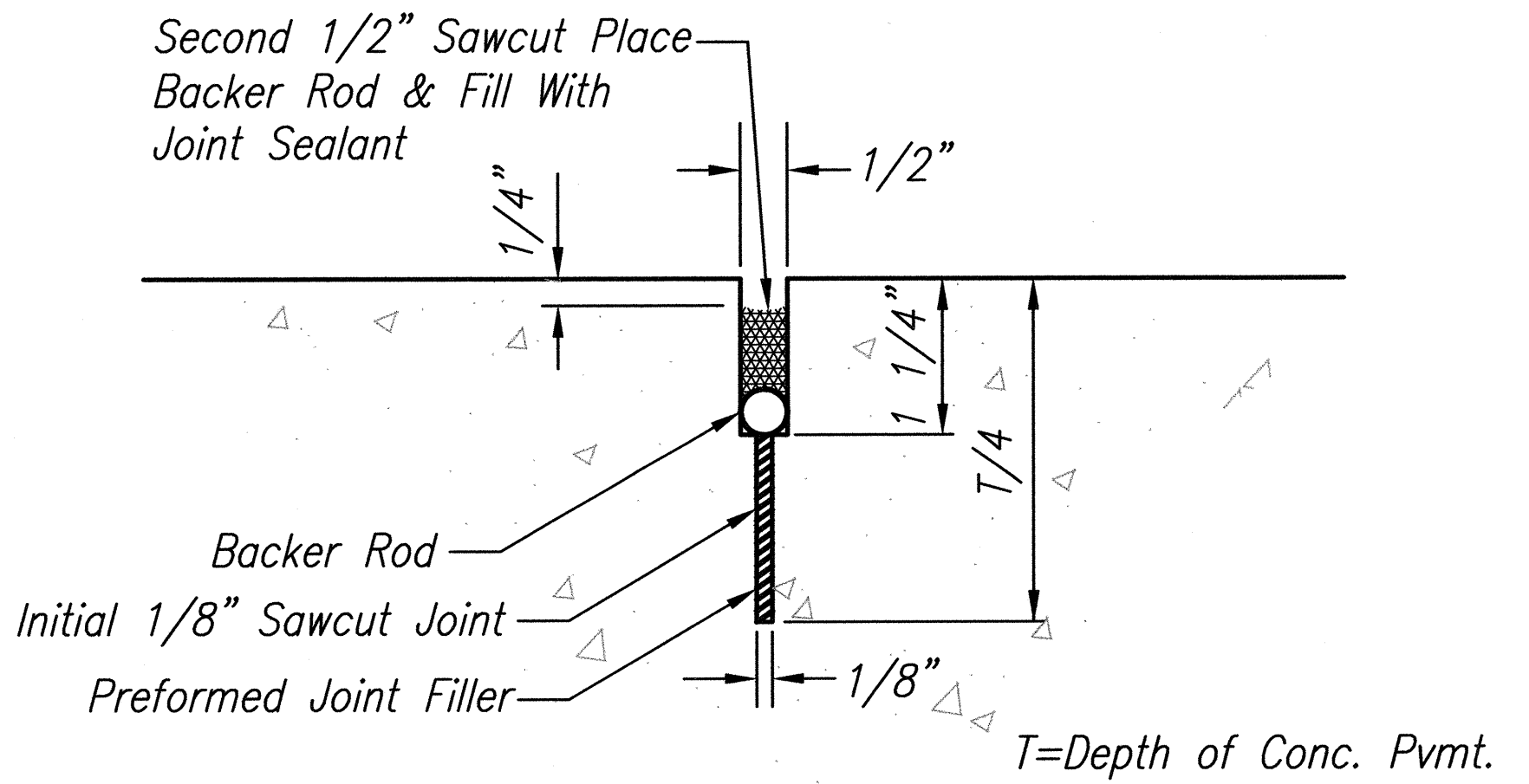
T=Depth of Conc. Pvmt.

**LONGITUDINAL JOINT (LJ)**

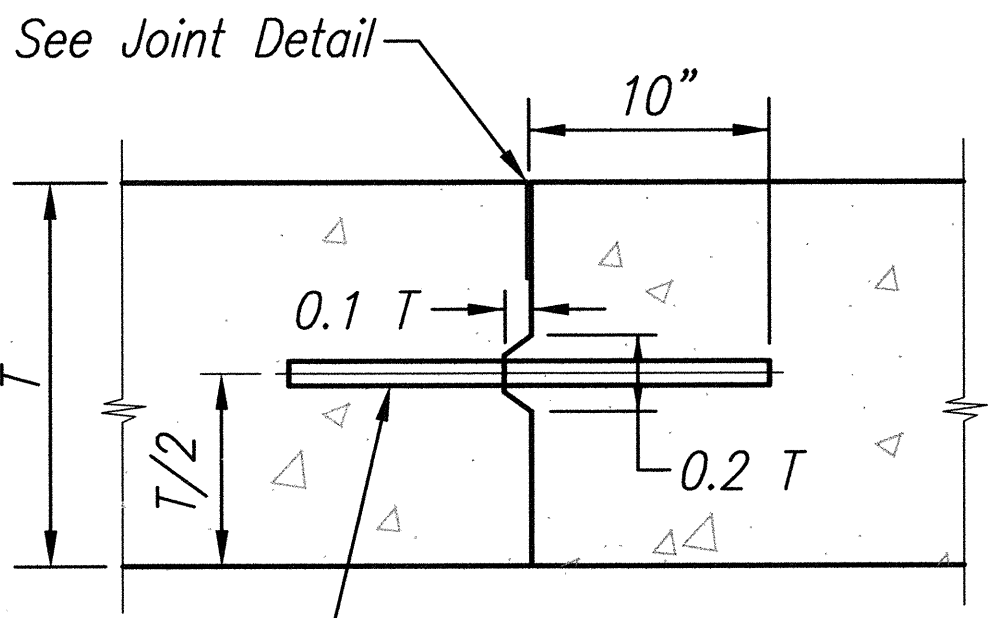
SCALE : 1 1/2" = 1'-0"

**Concrete Notes:**

- Concrete Work Shall Conform to Section 701-Hydraulic Cement.
- Maximum Size of Aggregate Shall be 2" to 4" In Accordance With Table 703.02.
- Reinforcing Steel Shall Conform to Section 709-Reinforcing Steel, Wire Rope, and Prestressing Steel.
- Construction Joints Shall be Located by the Contractor Subject to Approval by the Engineer.



**JOINT DETAIL "A"**  
 Not to Scale



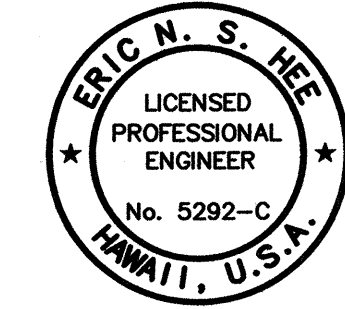
#8 Smooth Steel Dowels, 20" Long Spaced @ 18" o.c.

**CONSTRUCTION JOINT**  
 Not to Scale

- Notes:**
- Adjust Joint Locations For Exist. Utility Structures.
  - T=Depth of Conc. Pvmt.

ORIGINAL PLAN	DATE
DESIGNED BY	
DESIGNED BY	
QUANTITIES BY	
CHECKED BY	
NO.	

1:15m-1:15m Engineering Projects 1997-1998 HAWAIIAN ENGINEERS SURVEYORS HAWAII, INC. Oct 01 2005 - 6:48am



THIS WORK WAS PREPARED BY ME OR UNDER MY SUPERVISION.  
 Eric N. S. Hee  
 ENGINEERS SURVEYORS HAWAII, INC.  
 LICENSE EXPIRATION DATE: 4/30/06

STATE OF HAWAII  
 DEPARTMENT OF TRANSPORTATION  
 HIGHWAYS DIVISION

**JOINTING PLAN & DETAILS**  
**KEAHUA ROAD CROSSING**

HALEAKALA HIGHWAY WIDENING, PHASE 2  
 HANA HIGHWAY TO PUKALANI BYPASS  
 FED. AID PROJ. NO. NH-037-1(24)

SCALE: AS NOTED DATE: MAY, 2005

SHEET No. 1 OF 1 SHEETS