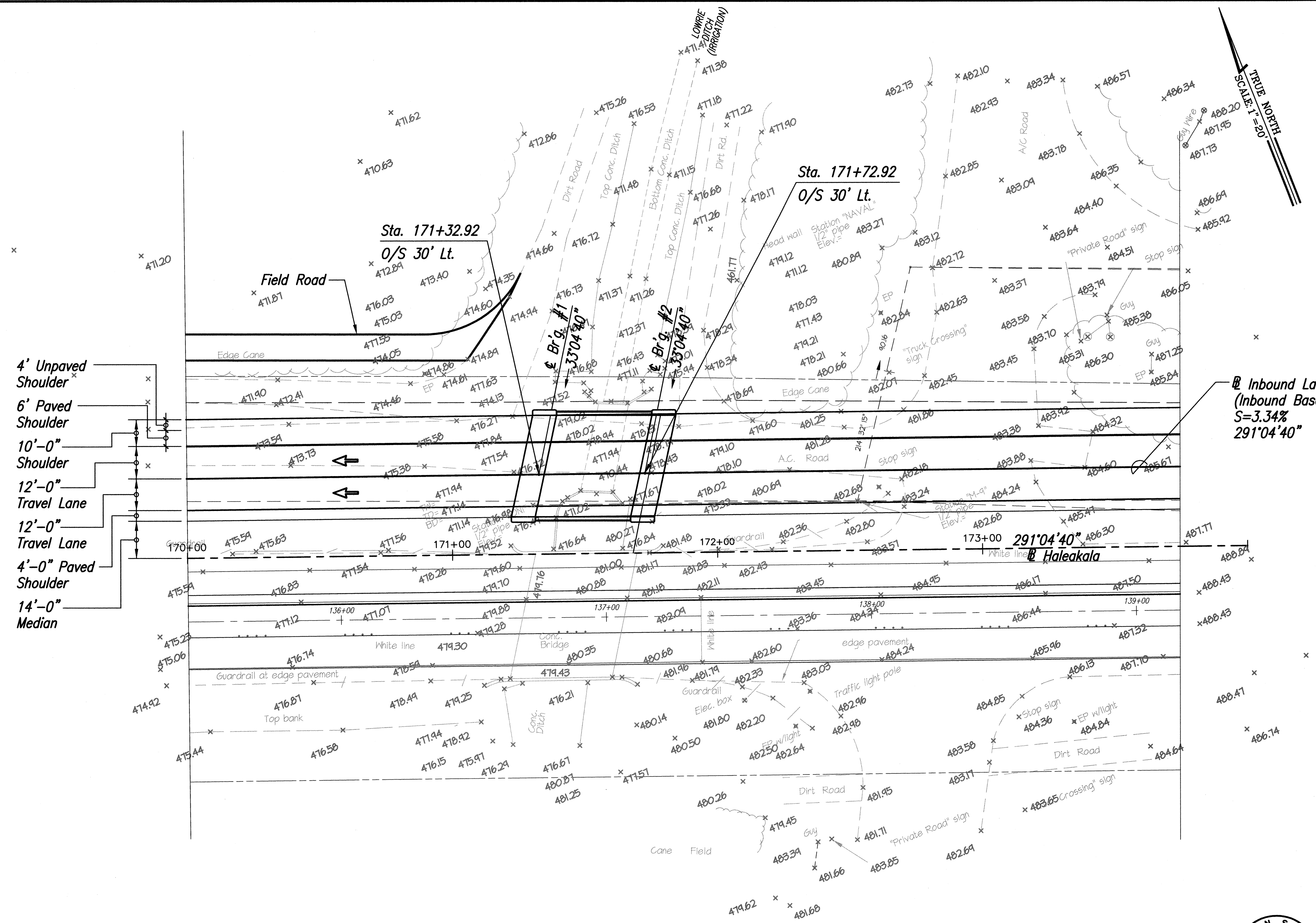


FED. ROAD DIST. NO.	STATE	FED. AID PROJ. NO.	FISCAL YEAR	SHEET NO.	TOTAL SHEETS
HAWAII	HAW.	NH-037-1(24)	2005	232	288



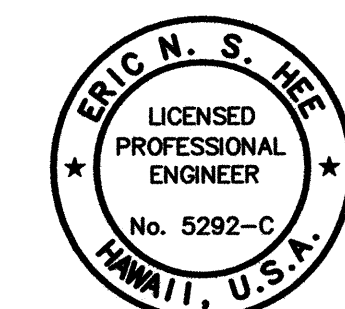
4' Unpaved Shoulder
 6' Paved Shoulder
 10'-0" Shoulder
 12'-0" Travel Lane
 12'-0" Travel Lane
 4'-0" Paved Shoulder
 14'-0" Median

@ Inbound Lanes
 (Inbound Baseline)
 S=3.34%
 291°04'40"

BRIDGE LAYOUT PLAN - CROSSING NO. 3
LOWRIE DITCH CROSSING
 SCALE: 1"=20'

SURVEY PLOTTED BY	DATE
DRAWN BY	
DESIGNED BY	
QUANTITIES BY	
CHECKED BY	
NO.	

\\E:\w-1\enr\Engineering\Projects\1994\194-057-Haleakala Hwy\WIDENING\BRIDGE\BRIDGE.dwg, Wed, Oct 05 2005 - 9:28am



THIS WORK WAS PREPARED BY
 ME OR UNDER MY SUPERVISION.
 Eric N. S. Hee
 ENGINEERS SURVEYORS HAWAII, INC.
 LICENSE EXPIRATION DATE: 4/30/06

STATE OF HAWAII
 DEPARTMENT OF TRANSPORTATION
 HIGHWAYS DIVISION
IRRIGATION DITCH CROSSING
WITH EXISTING CONDITIONS SHOWN
HALEAKALA HIGHWAY WIDENING, PHASE 2
HANA HIGHWAY TO PUKALANI BYPASS
FED. AID PROJ. NO. NH-037-1(24)
 SCALE: AS NOTED DATE: MAY, 2005
 SHEET No. 3 OF 4 SHEETS

