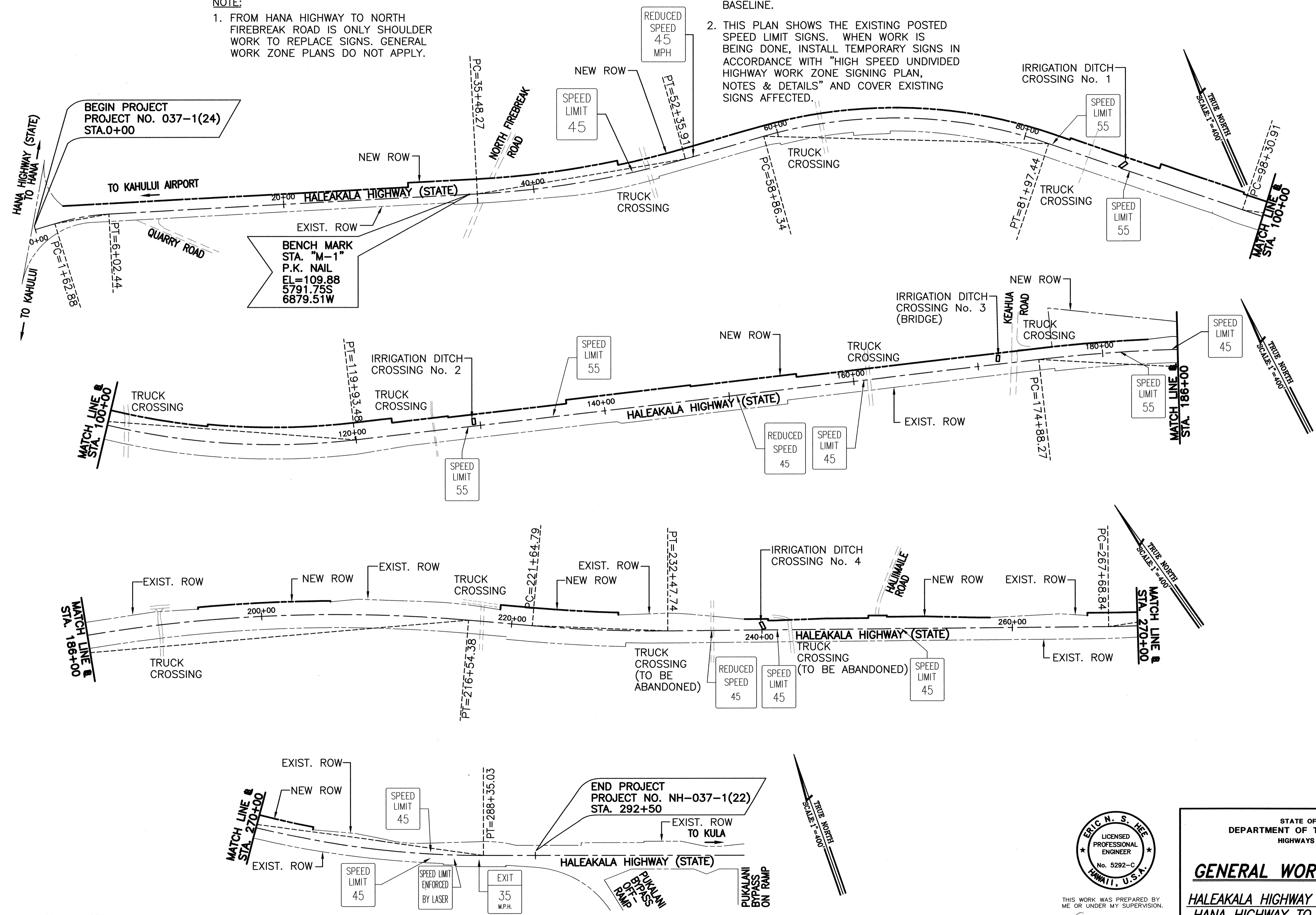


FED. ROAD DIST. NO.	STATE	FED. AID PROJ. NO.	FISCAL YEAR	SHEET NO.	TOTAL SHEETS
HAWAII	HAW.	NH-037-1(24)	2005	175	288

**NOTE:**  
1. FROM HANA HIGHWAY TO NORTH FIREBREAK ROAD IS ONLY SHOULDER WORK TO REPLACE SIGNS. GENERAL WORK ZONE PLANS DO NOT APPLY.

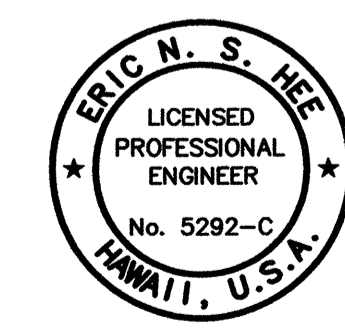
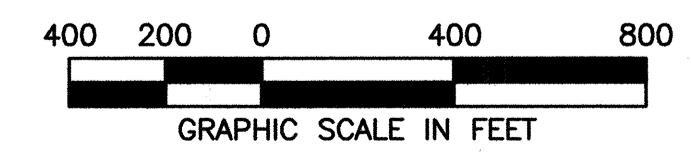
**NOTE:**  
1. ALL STATIONS AND BASELINE INFORMATION ARE REFERENCED TO THE PROJECT BASELINE.  
2. THIS PLAN SHOWS THE EXISTING POSTED SPEED LIMIT SIGNS. WHEN WORK IS BEING DONE, INSTALL TEMPORARY SIGNS IN ACCORDANCE WITH "HIGH SPEED UNDIVIDED HIGHWAY WORK ZONE SIGNING PLAN, NOTES & DETAILS" AND COVER EXISTING SIGNS AFFECTED.

**NOTE (CONTINUATION)**  
3. SEE ENLARGED PLANS IN FOLLOWING SHEETS.



DATE	_____
SURVEY PLOTTED BY	_____
DRAWN BY	_____
DESIGNED BY	_____
QUANTITIES BY	_____
CHECKED BY	_____
NO.	_____

\Lea-1\enr\Engineering\Projects\1994\194-036\Haleakala Hwy\Phase 2\WORKING\GENERAL\CONTRACT\PLAN\ZONING\175.dwg, Sep 30 2005 - 1:25pm



THIS WORK WAS PREPARED BY ME OR UNDER MY SUPERVISION.  
*Eric N. S. Hsu*  
 ENGINEERS SURVEYORS HAWAII, INC.  
 LICENSE EXPIRATION DATE: 4/30/06

STATE OF HAWAII  
 DEPARTMENT OF TRANSPORTATION  
 HIGHWAYS DIVISION

**GENERAL WORK ZONE-PLAN**

**HALEAKALA HIGHWAY WIDENING, PHASE 2  
 HANA HIGHWAY TO PUKALANI BYPASS  
 FED. AID PROJ. NO. NH-037-1(24)**

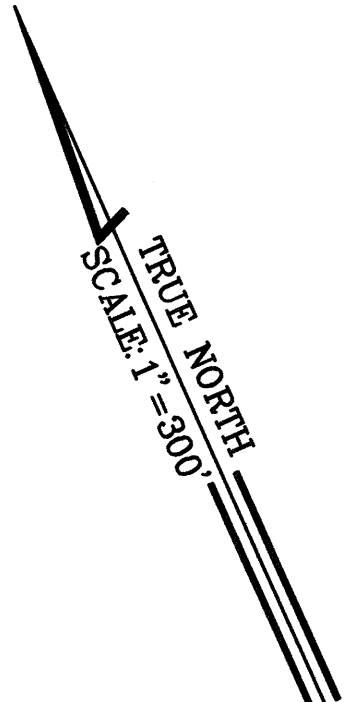
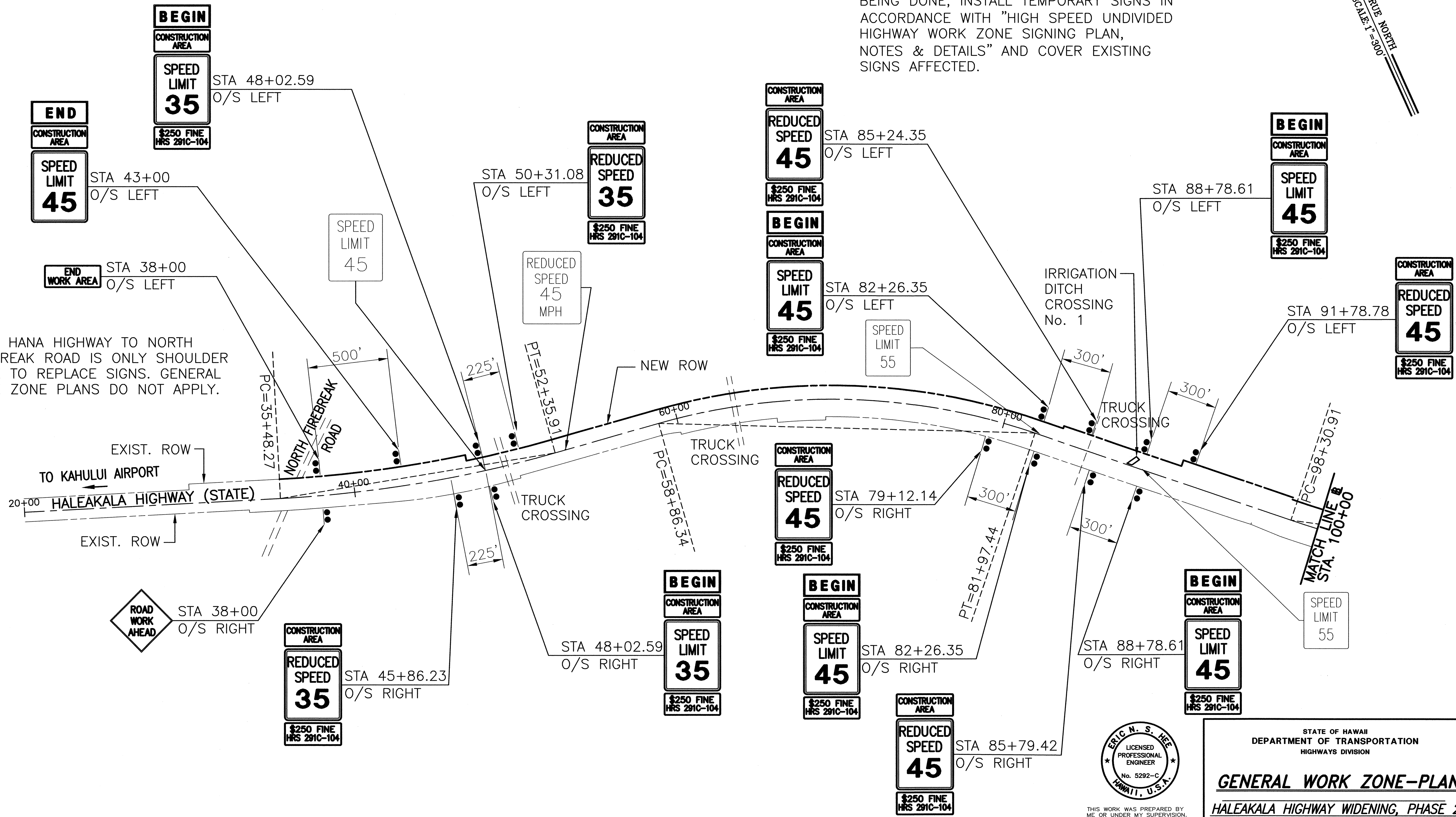
SCALE: AS NOTED      DATE: MAY, 2005

SHEET No. 1 OF 4 SHEETS

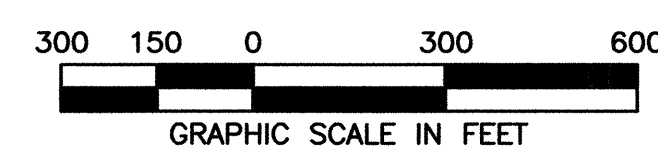
FED. ROAD DIST. NO.	STATE	FED. AID PROJ. NO.	FISCAL YEAR	SHEET NO.	TOTAL SHEETS
HAWAII	HAW.	NH-037-1(24)	2004	170	278

- NOTE:
1. ALL STATIONS AND BASELINE INFORMATION ARE REFERENCED TO THE PROJECT BASELINE.
  2. THIS PLAN SHOWS THE EXISTING POSTED SPEED LIMIT SIGNS. WHEN WORK IS BEING DONE, INSTALL TEMPORARY SIGNS IN ACCORDANCE WITH "HIGH SPEED UNDIVIDED HIGHWAY WORK ZONE SIGNING PLAN, NOTES & DETAILS" AND COVER EXISTING SIGNS AFFECTED.

- NOTE:
1. FROM HANA HIGHWAY TO NORTH FIREBREAK ROAD IS ONLY SHOULDER WORK TO REPLACE SIGNS. GENERAL WORK ZONE PLANS DO NOT APPLY.



SURVEY PLOTTED BY	DATE
DRAWN BY	
DESIGNED BY	
QUANTITIES BY	
CHECKED BY	
NO.	



ERIC N. S. HEE  
 LICENSED PROFESSIONAL ENGINEER  
 No. 5292-C  
 HAWAII, U.S.A.

THIS WORK WAS PREPARED BY ME OR UNDER MY SUPERVISION.

*Eric N. S. Hee*  
 ENGINEERS SURVEYORS HAWAII, INC.  
 LICENSE EXPIRATION DATE: 4/30/06

STATE OF HAWAII  
 DEPARTMENT OF TRANSPORTATION  
 HIGHWAYS DIVISION

**GENERAL WORK ZONE-PLAN**

**HALEAKALA HIGHWAY WIDENING, PHASE 2  
 HANA HIGHWAY TO PUKALANI BYPASS  
 FED. AID PROJ. NO. NH-037-1(24)**

SCALE: AS NOTED DATE: MAY, 2005

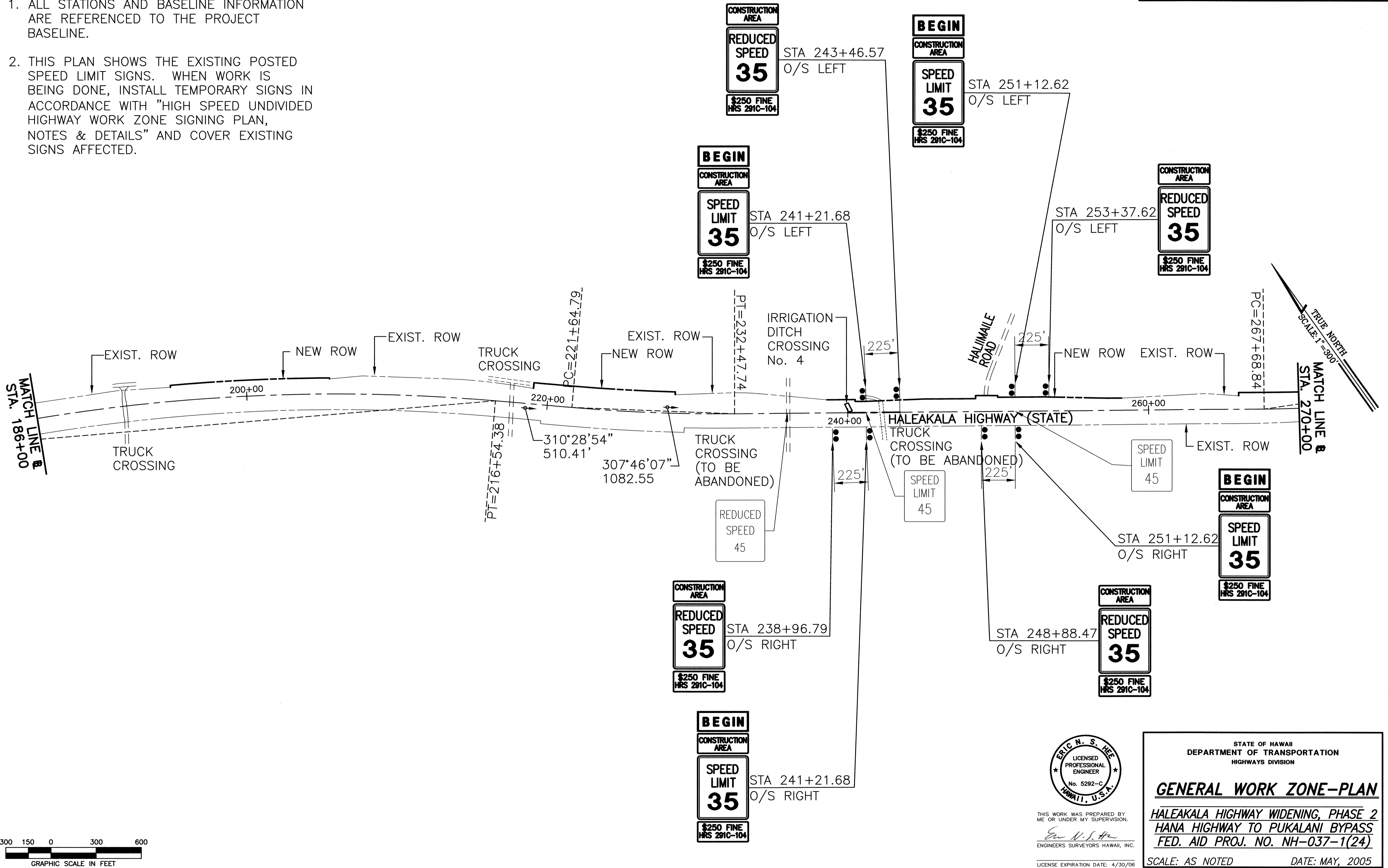
SHEET No. 1 OF 4 SHEETS



FED. ROAD DIST. NO.	STATE	FED. AID PROJ. NO.	FISCAL YEAR	SHEET NO.	TOTAL SHEETS
HAWAII	HAW.	NH-037-1(24)	2005	178	288

**NOTE:**

- ALL STATIONS AND BASELINE INFORMATION ARE REFERENCED TO THE PROJECT BASELINE.
- THIS PLAN SHOWS THE EXISTING POSTED SPEED LIMIT SIGNS. WHEN WORK IS BEING DONE, INSTALL TEMPORARY SIGNS IN ACCORDANCE WITH "HIGH SPEED UNDIVIDED HIGHWAY WORK ZONE SIGNING PLAN, NOTES & DETAILS" AND COVER EXISTING SIGNS AFFECTED.



ORIGINAL PLAN	DATE
SURVEY PLOTTED BY	
DRAWN BY	
DESIGNED BY	
QUANTITIES BY	
CHECKED BY	
No.	

1150-1 (Rev. 1/05) Engineering Projects 1997 1998 1999 2000 2001 2002 2003 2004 2005 2006 2007 2008 2009 2010 2011 2012 2013 2014 2015 2016 2017 2018 2019 2020 2021 2022 2023 2024 2025  
 1150-1 (Rev. 1/05) Engineering Projects 1997 1998 1999 2000 2001 2002 2003 2004 2005 2006 2007 2008 2009 2010 2011 2012 2013 2014 2015 2016 2017 2018 2019 2020 2021 2022 2023 2024 2025

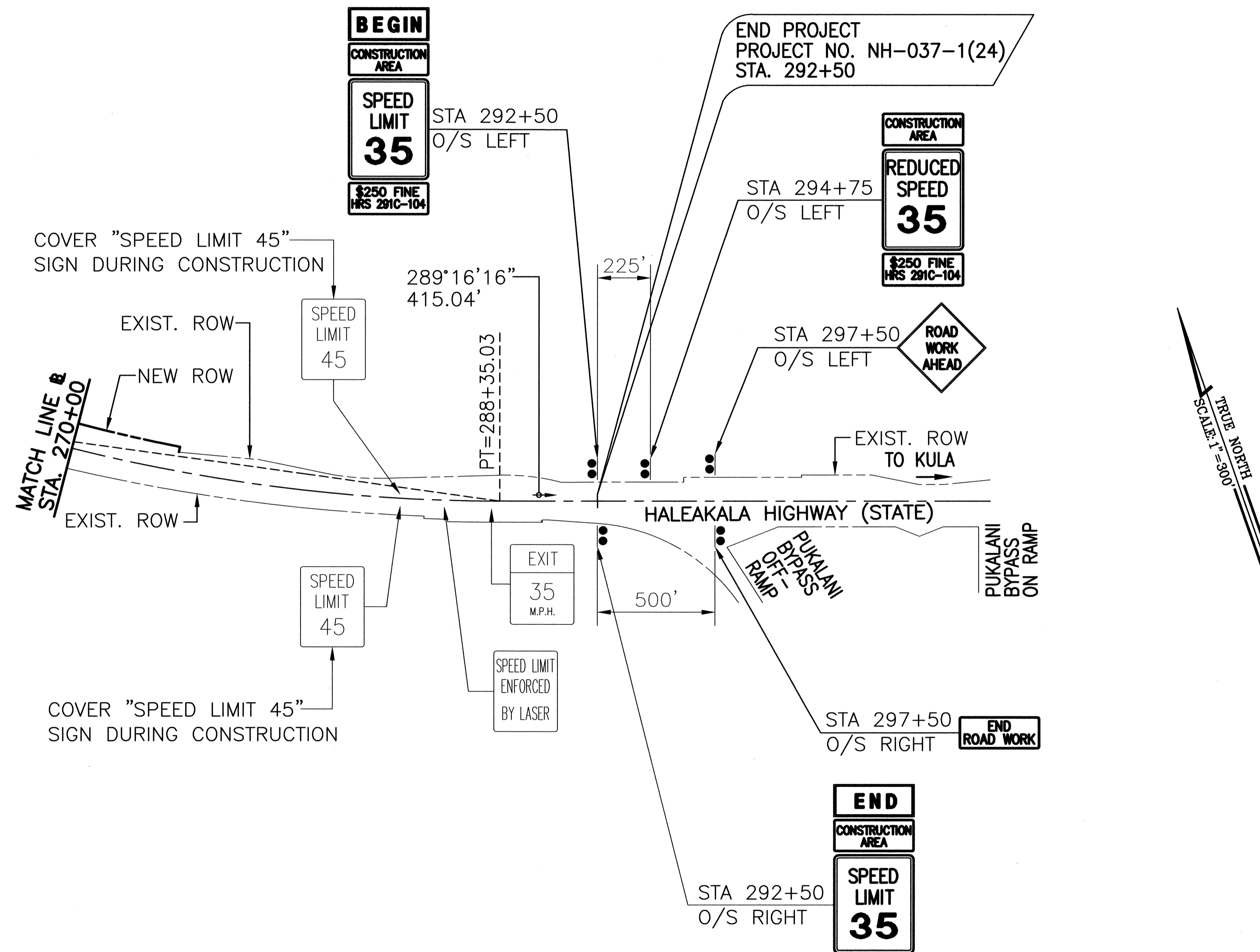
ERIC N. S. HEE  
 LICENSED PROFESSIONAL ENGINEER  
 No. 5292-C  
 HAWAII, U.S.A.  
 THIS WORK WAS PREPARED BY ME OR UNDER MY SUPERVISION.  
 Eric N. S. Hee  
 ENGINEERS SURVEYORS HAWAII, INC.  
 LICENSE EXPIRATION DATE: 4/30/06

STATE OF HAWAII  
 DEPARTMENT OF TRANSPORTATION  
 HIGHWAYS DIVISION  
**GENERAL WORK ZONE-PLAN**  
 HALEAKALA HIGHWAY WIDENING, PHASE 2  
 HANA HIGHWAY TO PUKALANI BYPASS  
 FED. AID PROJ. NO. NH-037-1(24)  
 SCALE: AS NOTED DATE: MAY, 2005  
 SHEET No. 3 OF 4 SHEETS

FED. ROAD DIST. NO.	STATE	FED. AID PROJ. NO.	FISCAL YEAR	SHEET NO.	TOTAL SHEETS
HAWAII	HAW.	NH-037-1(24)	2005	179	288

**NOTE:**

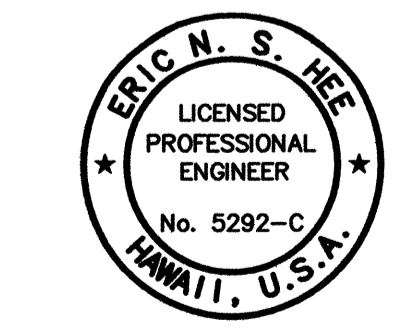
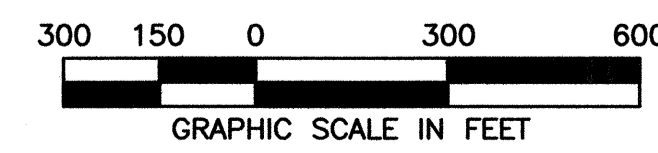
- ALL STATIONS AND BASELINE INFORMATION ARE REFERENCED TO THE PROJECT BASELINE.
- THIS PLAN SHOWS THE EXISTING POSTED SPEED LIMIT SIGNS. WHEN WORK IS BEING DONE, INSTALL TEMPORARY SIGNS IN ACCORDANCE WITH "HIGH SPEED UNDIVIDED HIGHWAY WORK ZONE SIGNING PLAN, NOTES & DETAILS" AND COVER EXISTING SIGNS AFFECTED.



TRUE NORTH  
SCALE: 1" = 300'

ORIGINAL PLAN	DATE
DRAWN BY	
DESIGNED BY	
QUANTITIES BY	
CHECKED BY	
No.	

1\Est-1\est\Engineering\Projects\1997\197-035 Haleakala Hwy\Phase 2\WorkZonePlan\GWP-PLAN-179.dwg Plt, Sep 30 2005 - 11:53am



THIS WORK WAS PREPARED BY ME OR UNDER MY SUPERVISION.  
 Eric N. S. Hee  
 ENGINEERS SURVEYORS HAWAII, INC.  
 LICENSE EXPIRATION DATE: 4/30/06

STATE OF HAWAII  
 DEPARTMENT OF TRANSPORTATION  
 HIGHWAYS DIVISION

**GENERAL WORK ZONE-PLAN**

**HALEAKALA HIGHWAY WIDENING, PHASE 2**  
**HANA HIGHWAY TO PUKALANI BYPASS**  
**FED. AID PROJ. NO. NH-037-1(24)**

SCALE: AS NOTED DATE: MAY, 2005

SHEET No. 4 OF 4 SHEETS