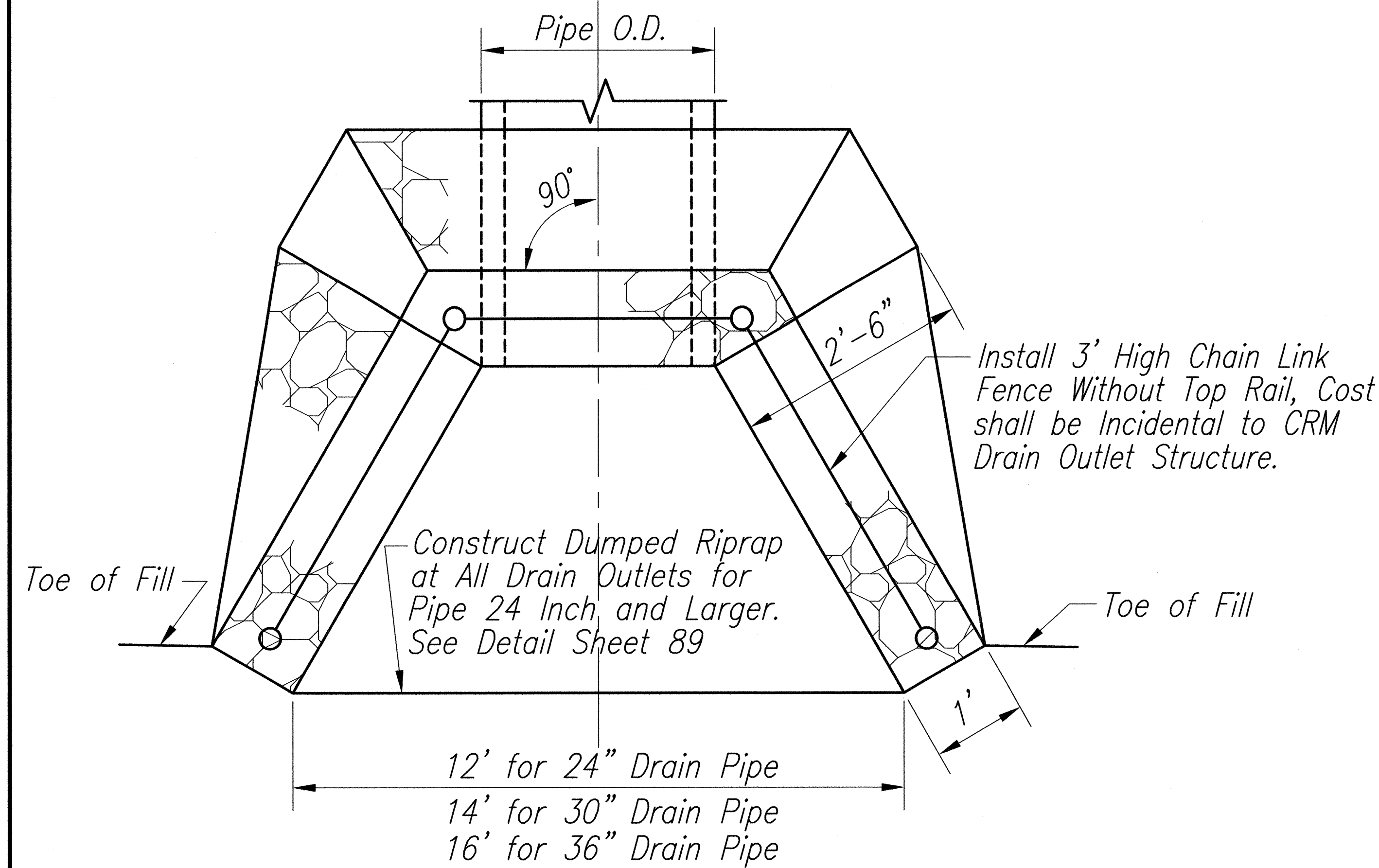
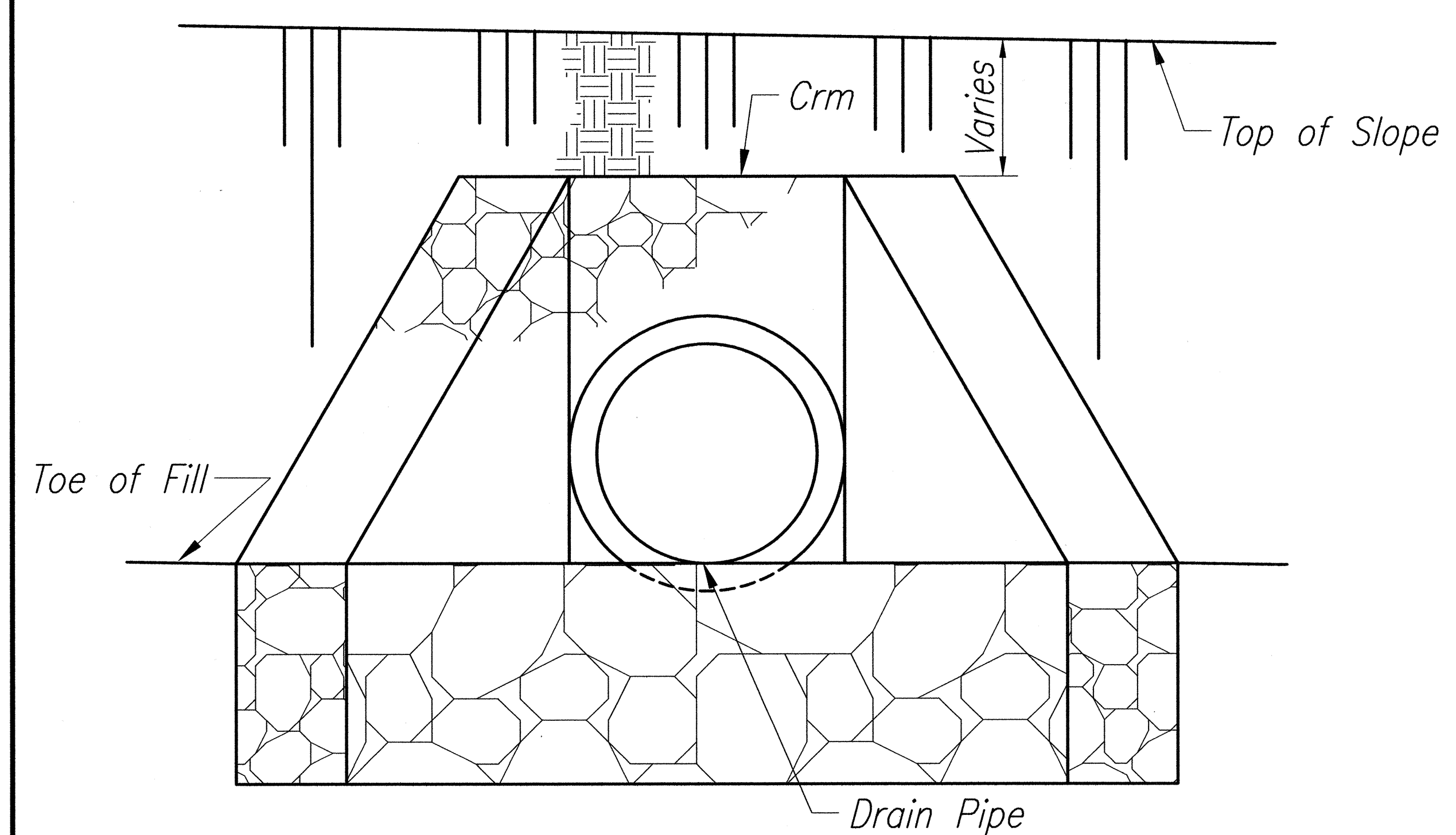


FED. ROAD DIST. NO.	STATE	FED. AID PROJ. NO.	FISCAL YEAR	SHEET NO.	TOTAL SHEETS
HAWAII	HAW.	NH-037-1(24)	2005	211	288



12' for 24" Drain Pipe
 14' for 30" Drain Pipe
 16' for 36" Drain Pipe

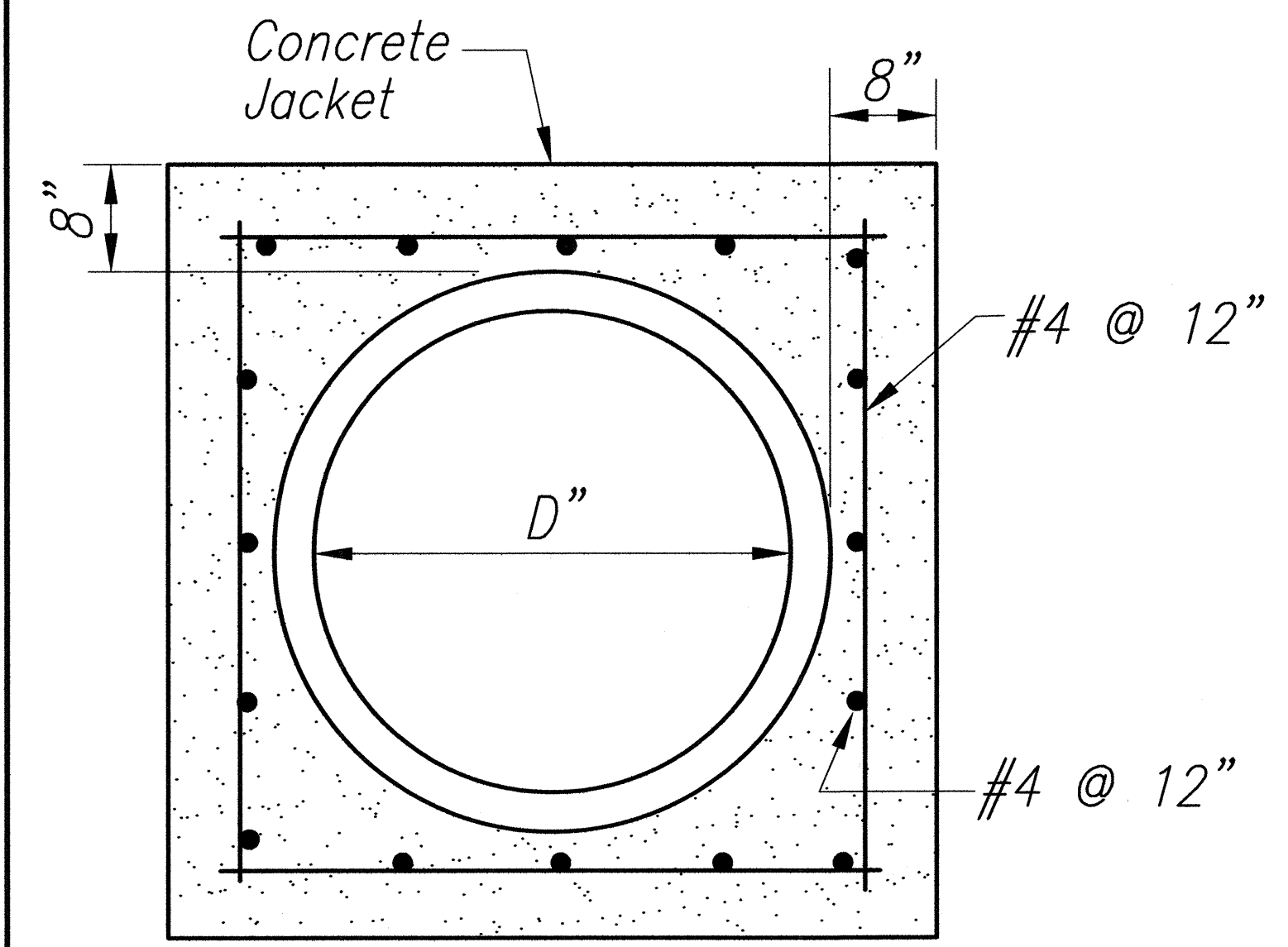
PLAN



FRONT ELEVATION

CRM DRAIN OUTLET STRUCTURE

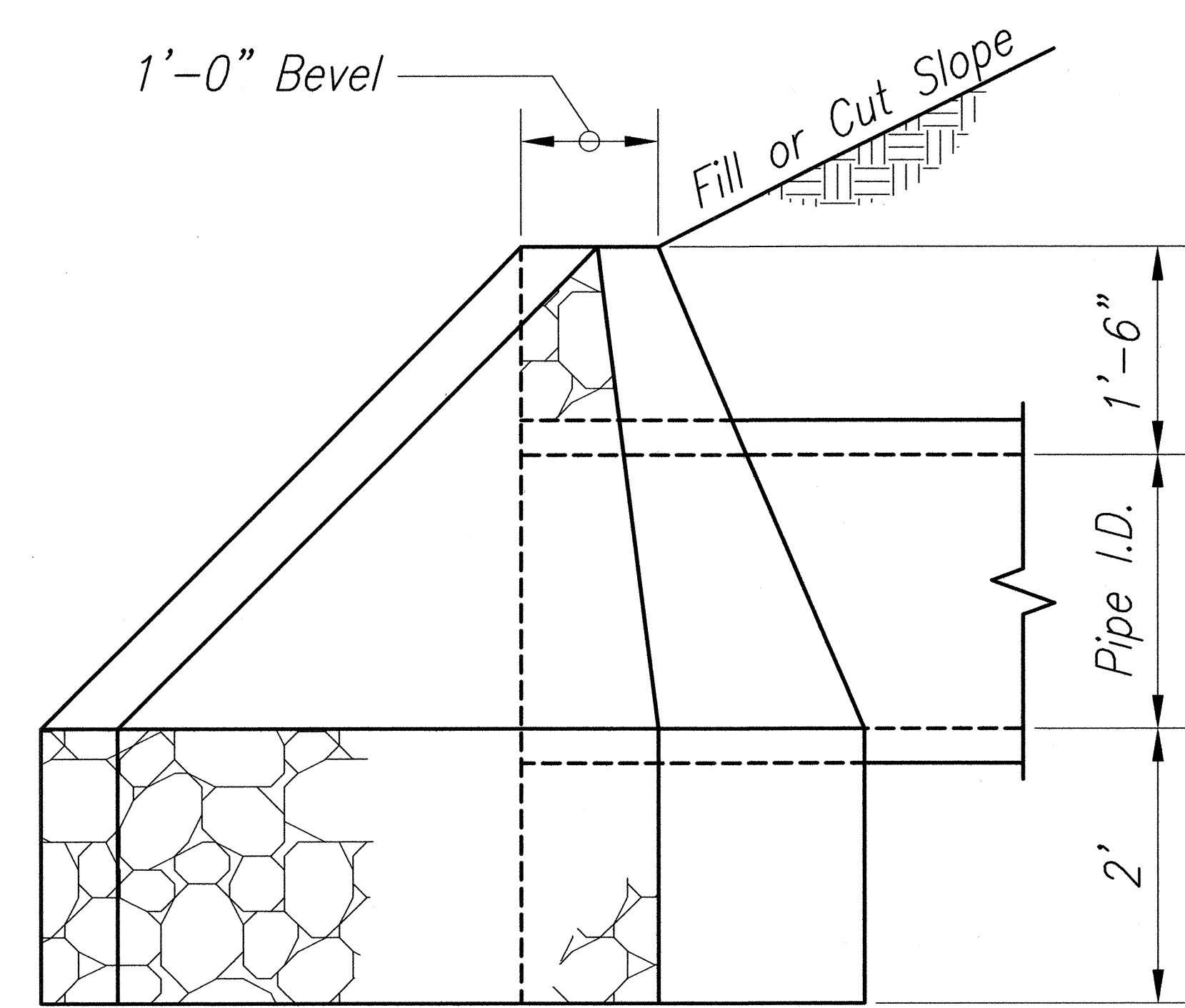
NOT TO SCALE



NOTES

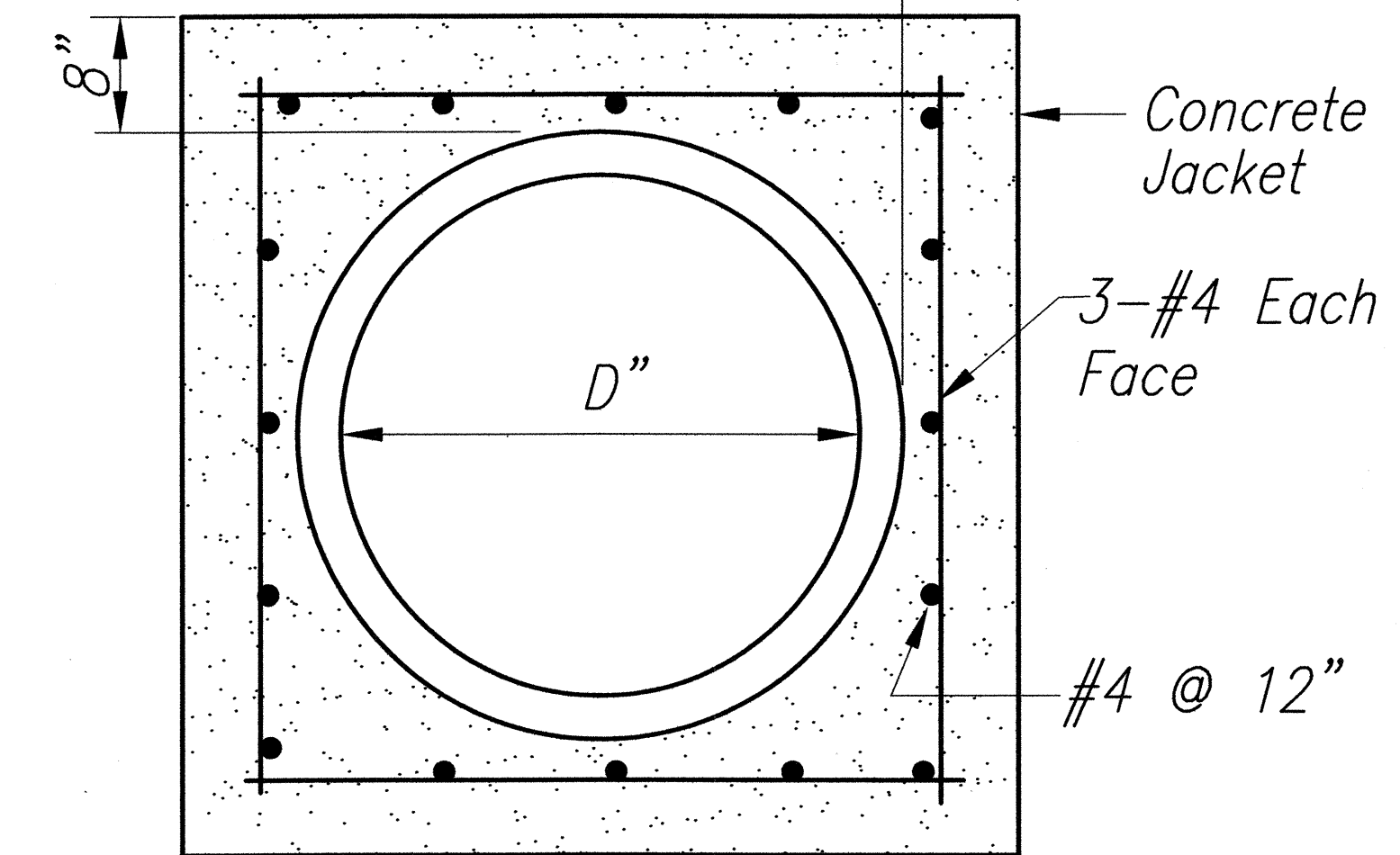
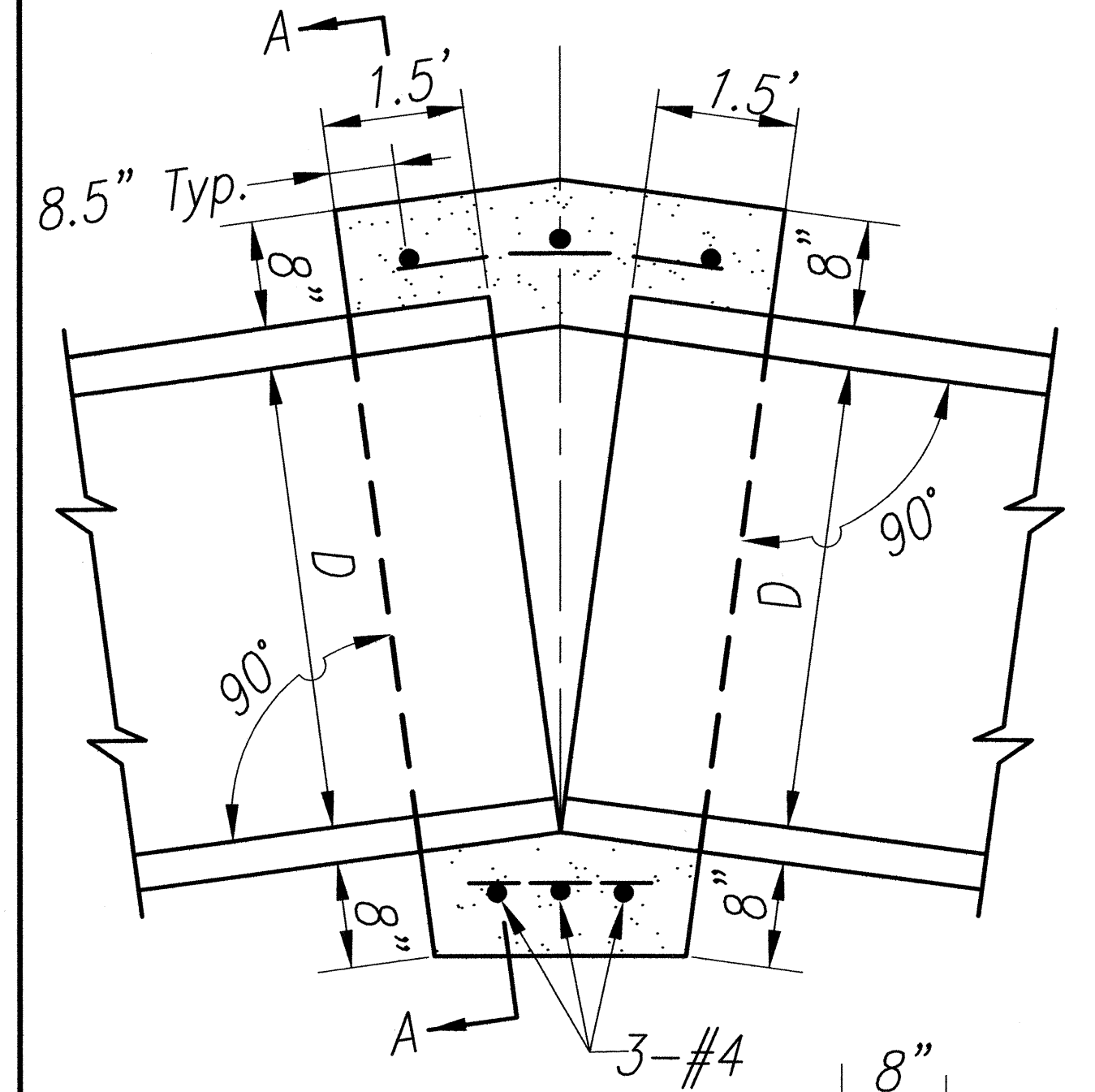
1. Reinforcement Shall be Placed 1-1/2" Clear Minimum from Outside Diameter of Pipe.

CONCRETE JACKET DETAIL



8' for 24" Drain Pipe
 9' for 30" Drain Pipe
 10' for 36" Drain Pipe

SIDE ELEVATION

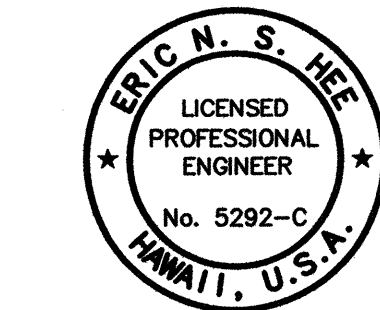


SIDE ELEVATION

NOTES

1. Join Pipes at Inverts.
2. Reinforcement Shall be Placed 1-1/2" Clear Minimum from Outside Diameter of Pipe.

CONCRETE COLLAR DETAILS



THIS WORK WAS PREPARED BY ME OR UNDER MY SUPERVISION.
 Eric N. S. Hee
 ENGINEERS SURVEYORS HAWAII, INC.
 LICENSE EXPIRATION DATE: 4/30/06

STATE OF HAWAII
 DEPARTMENT OF TRANSPORTATION
 HIGHWAYS DIVISION
CRM DRAIN OUTLET STRUCTURE & MISCELLANEOUS DETAILS
 HALEAKALA HIGHWAY WIDENING, PHASE 2
 HANA HIGHWAY TO PUKALANI BYPASS
 FED. AID PROJ. NO. NH-037-1(24)
 SCALE: AS NOTED DATE: SEP., 2005

SHEET No. 1 OF 1 SHEETS

SURVEY PLOTTED BY	DATE
DRAWN BY	
DESIGNED BY	
QUANTITIES BY	
CHECKED BY	
ORIGINAL PLAN	No.
NOTE BOOK	

11/28/05-1 Year Engineering Projects 11/28/05-11/28/06 HAWAIIAN ENGINEERS SURVEYORS HAWAII, INC. 11/28/05-11/28/06 HAWAIIAN ENGINEERS SURVEYORS HAWAII, INC. 11/28/05-11/28/06 HAWAIIAN ENGINEERS SURVEYORS HAWAII, INC.