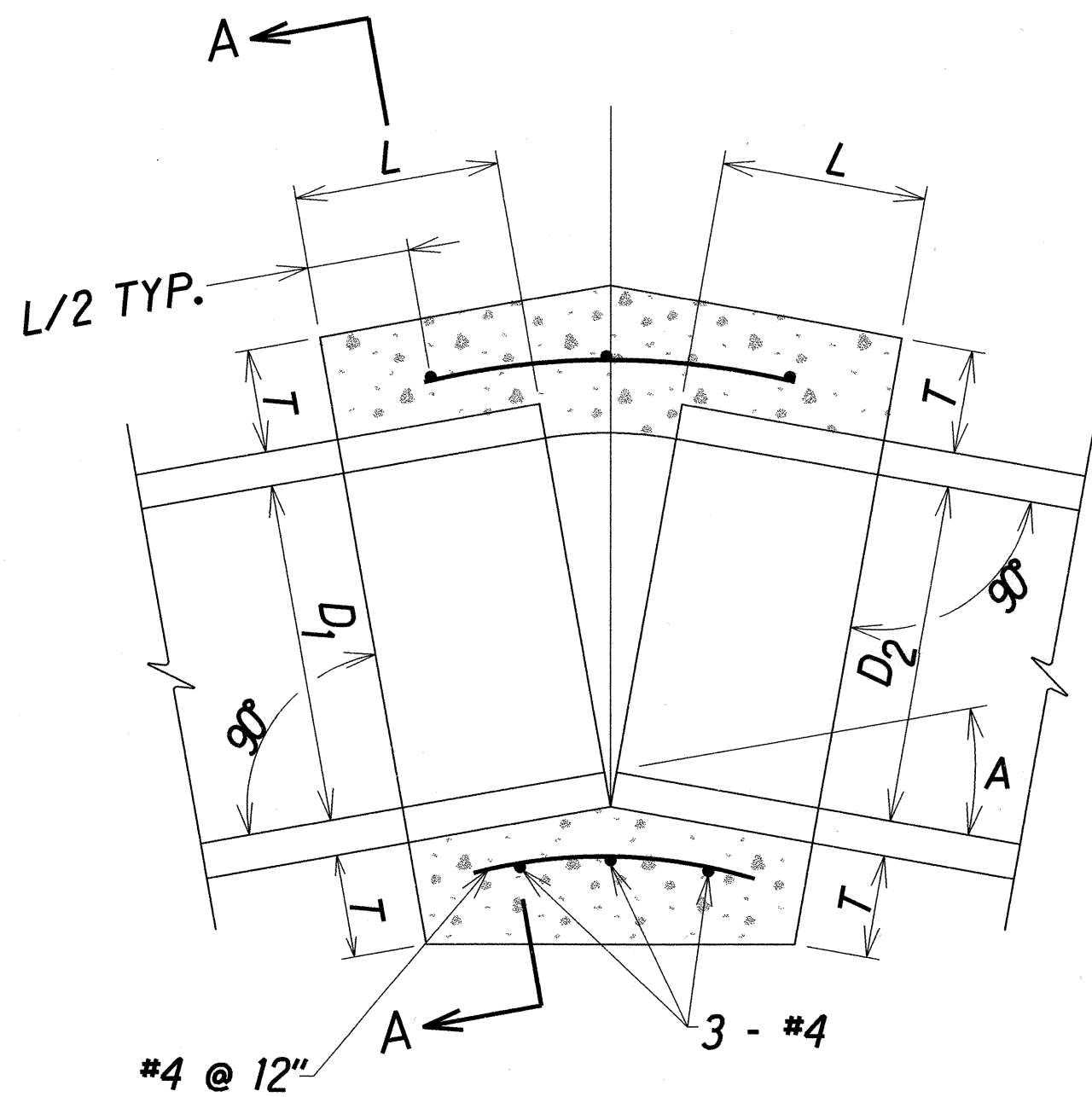
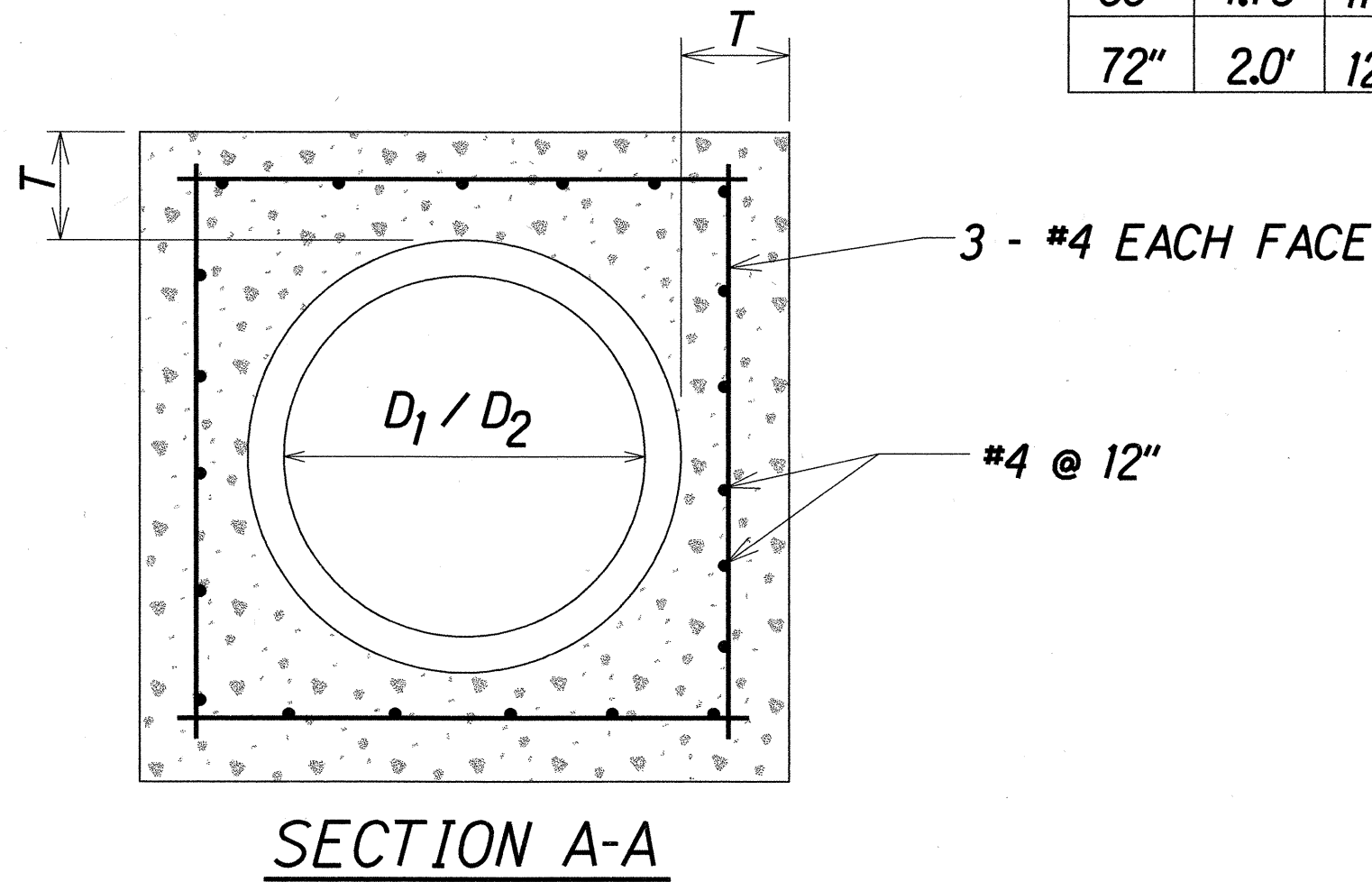


FED. ROAD DIST. NO.	STATE	PROJ. NO.	FISCAL YEAR	SHEET NO.	TOTAL SHEETS
HAWAII	HAW.	37CD-01-02M	2002	6	68



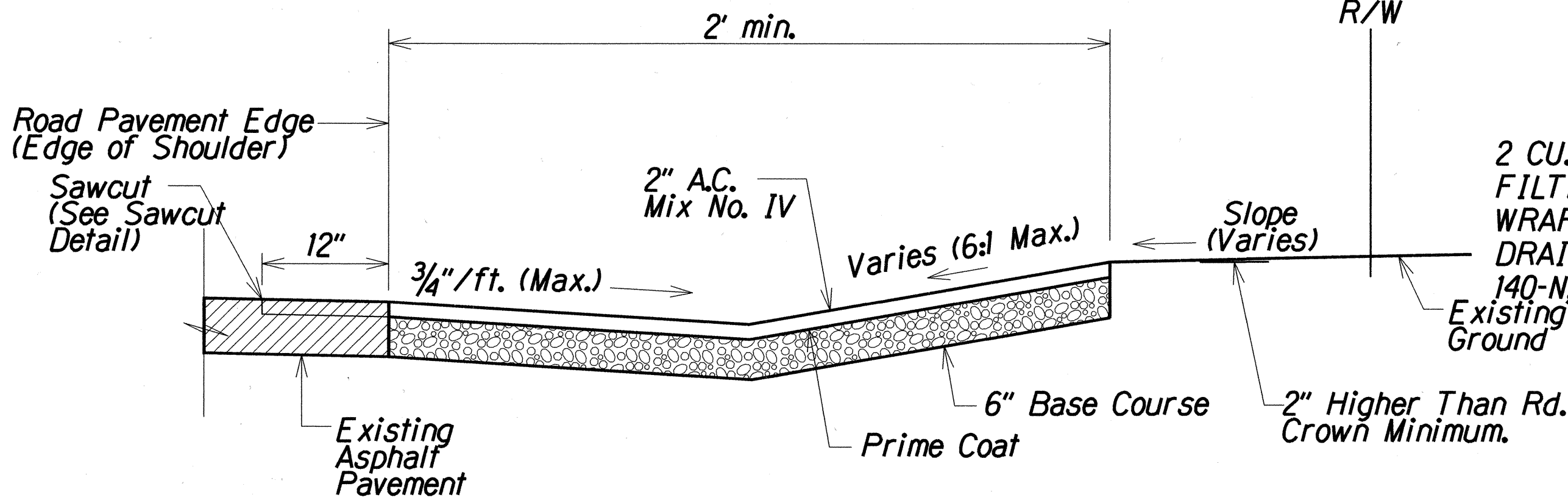
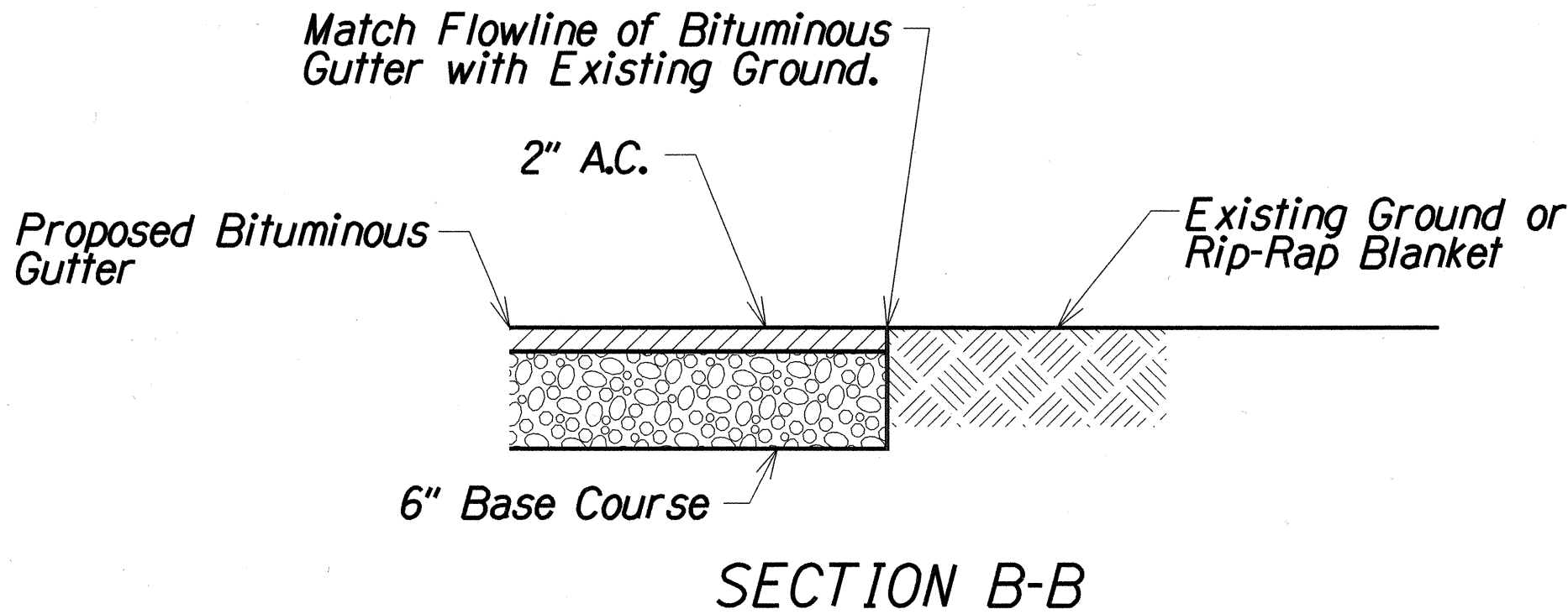
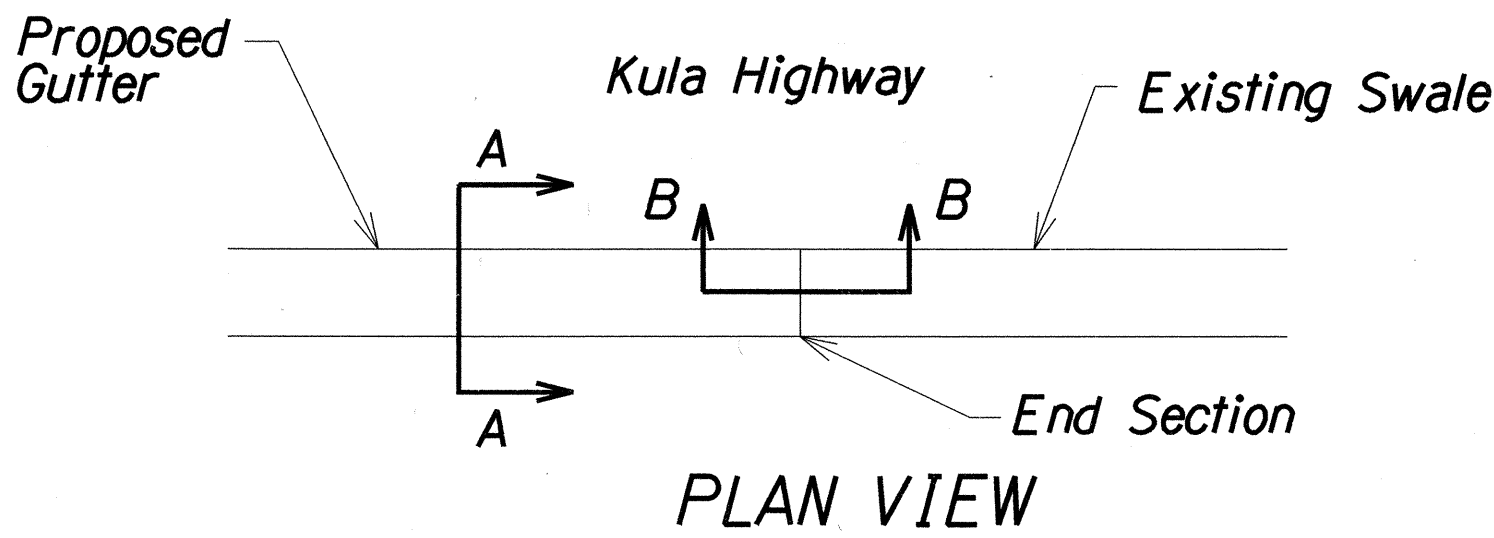
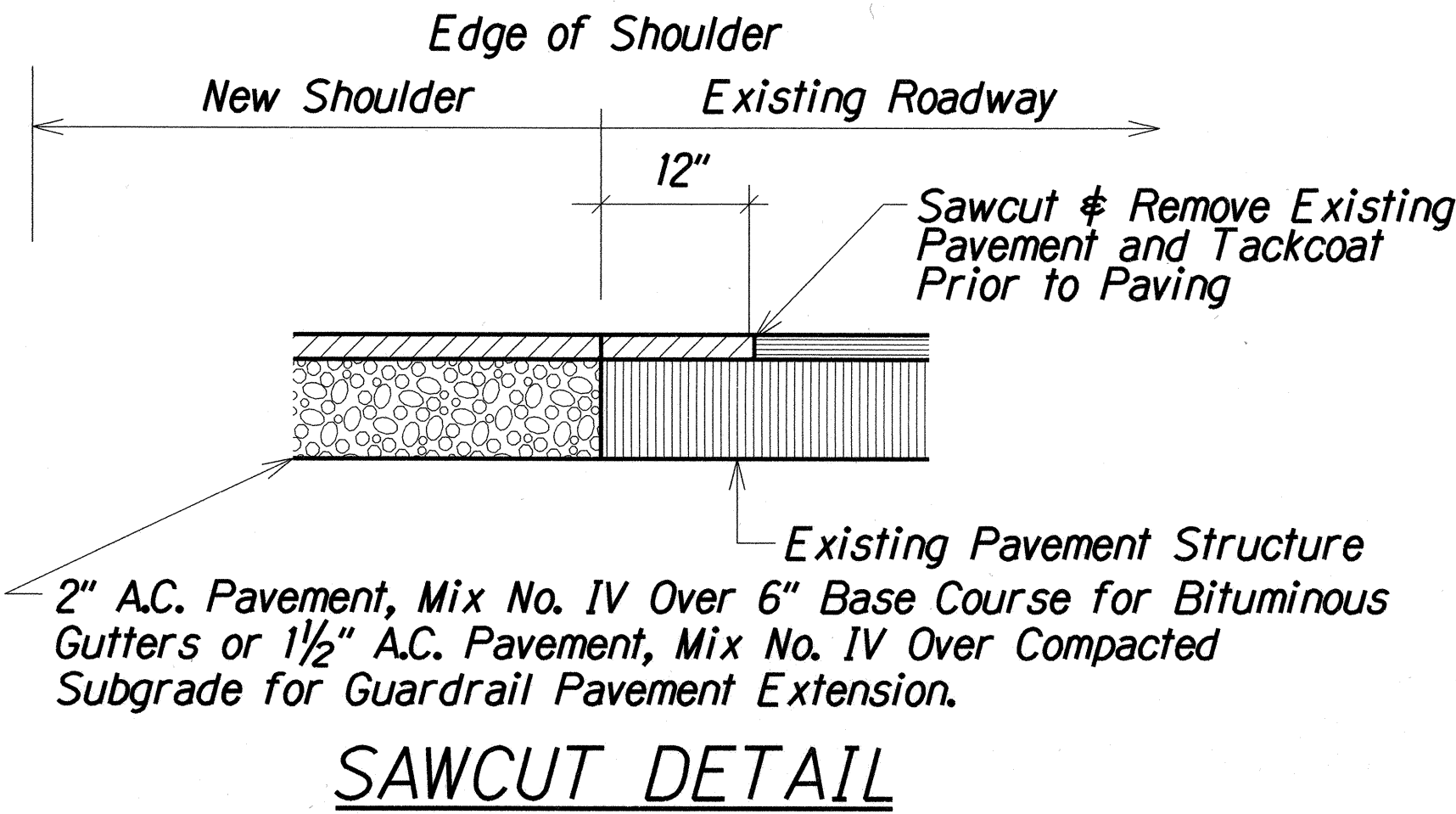
D	L	T
12"	1.0'	4"
18"	1.0'	5"
24"	1.0'	6"
36"	1.5'	8"
48"	1.5'	10"
54"	1.5'	10"
60"	1.75'	11"
66"	1.75'	11"
72"	2.0'	12"



NOTES

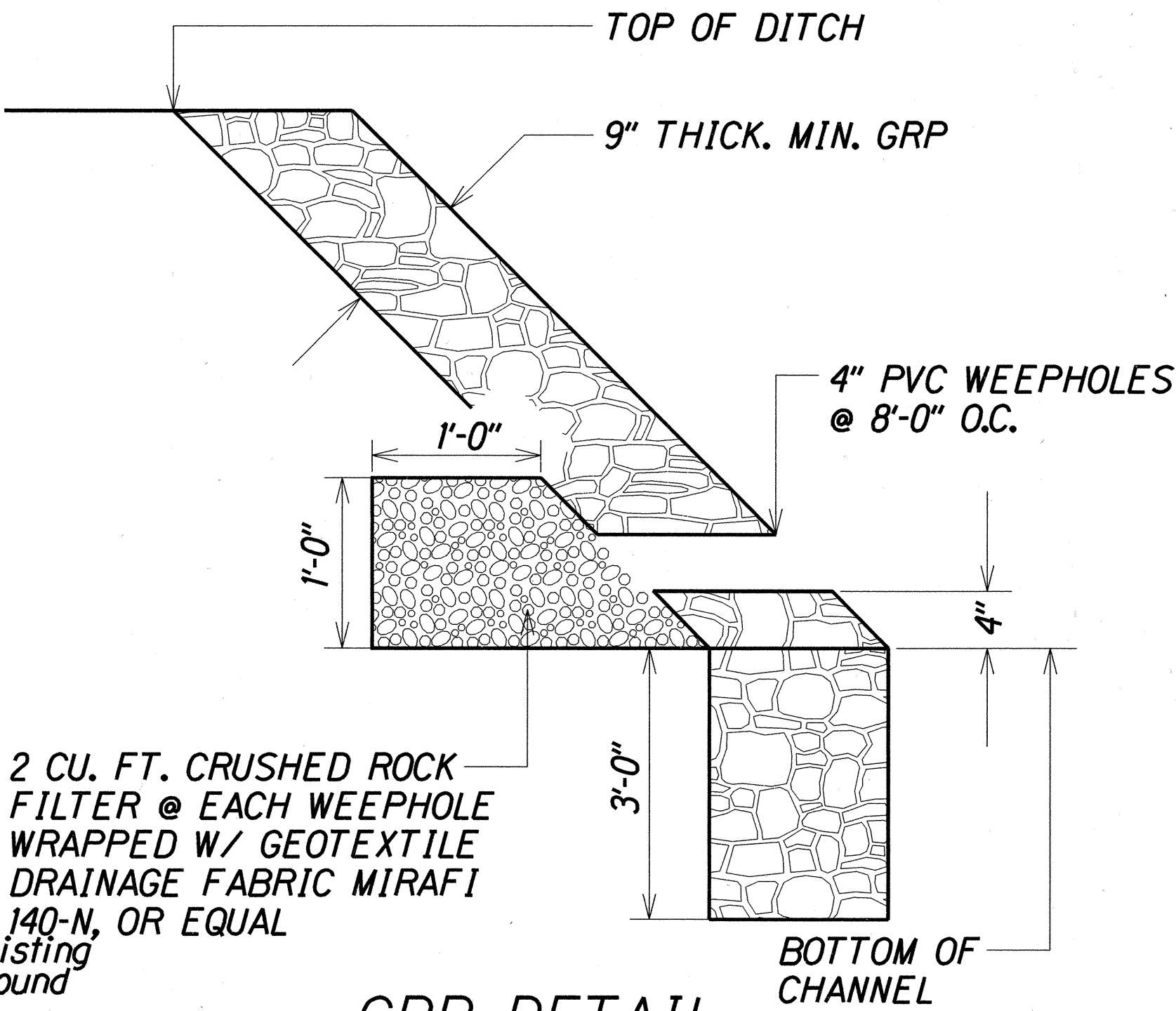
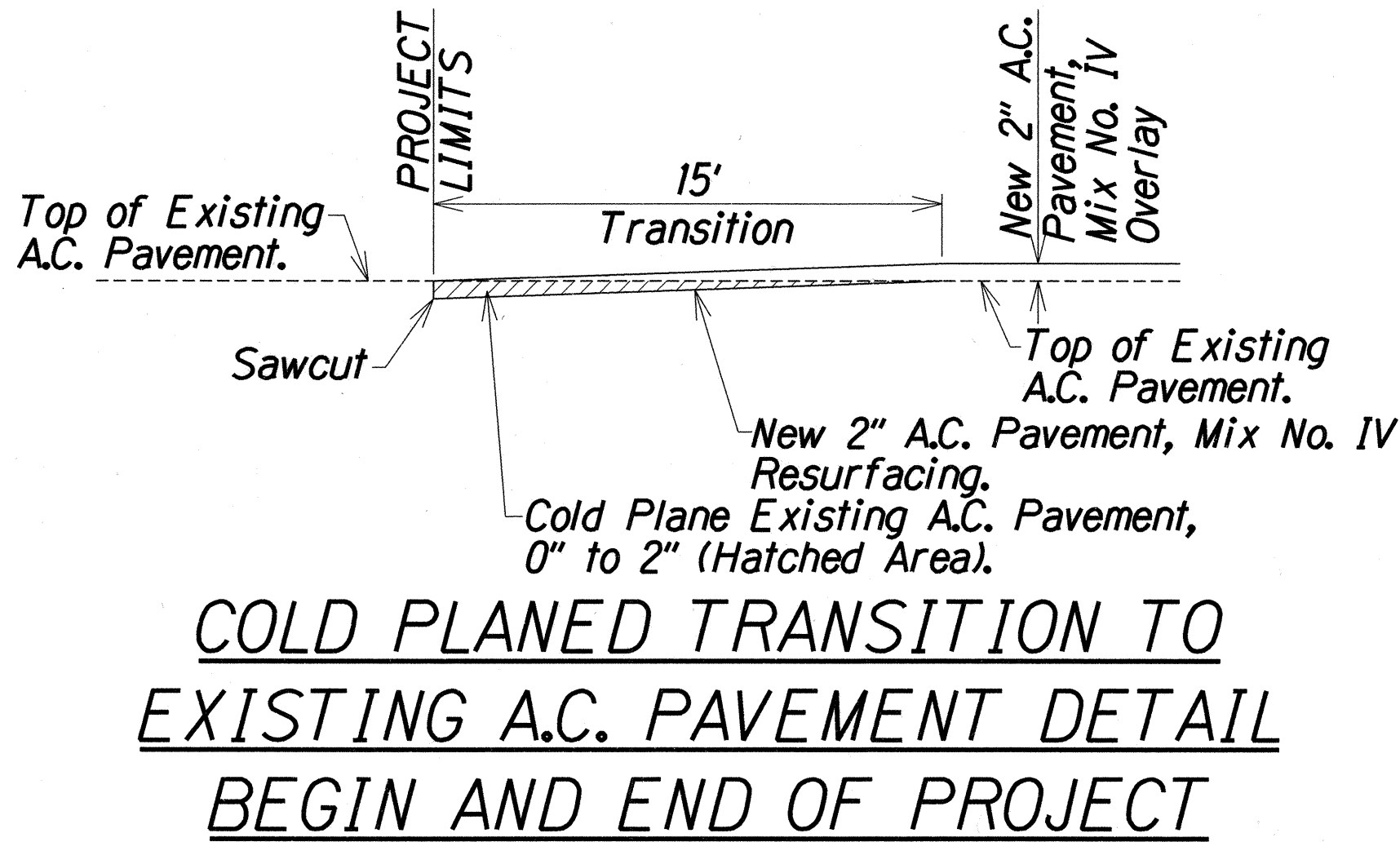
- WHERE PIPES OF DIFFERENT DIAMETERS ARE JOINED WITH A CONCRETE COLLAR, L AND T SHALL BE THOSE OF THE LARGER PIPE D=D1 OR D2 WHICHEVER IS GREATER.
- FOR PIPE SIZES NOT LISTED USE NEXT LARGER SIZE.
- OMIT REINFORCING ON PIPES 24" AND LESS IN DIAMETER AND ON ALL PIPES WHERE ANGLE A IS LESS THAN 10°.
- JOIN PIPES AT INVERTS.
- REINFORCEMENT SHALL BE PLACED 1½" CLEAR FROM OUTSIDE DIAMETER OF PIPE.
- ALL CONCRETE COLLAR WORK SHALL BE CONSIDERED INCIDENTAL TO THE VARIOUS STORM DRAIN ITEMS.

CONCRETE COLLAR DETAIL



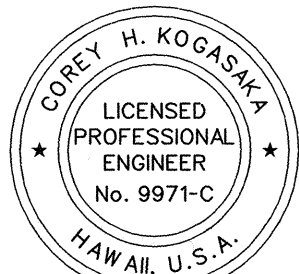
SECTION A-A

BITUMINOUS GUTTER DETAIL



GRP DETAIL

2 CU. FT. CRUSHED ROCK FILTER @ EACH WEEPHOLE WRAPPED W/ GEOTEXTILE DRAINAGE FABRIC MIRAFI 140-N, OR EQUAL



THIS WORK WAS PREPARED BY ME OR UNDER MY SUPERVISION AND CONSTRUCTION OF THIS PROJECT WILL BE UNDER MY OBSERVATION.
 DATE: 5/6/02

MISCELLANEOUS DETAILS

KULA HIGHWAY
 REPAIR AND MAINTENANCE
 PROJECT NO. 37CD-01-02M

Scale: NTS Date: May, 2002

SHEET No. 1 OF 2 SHEETS