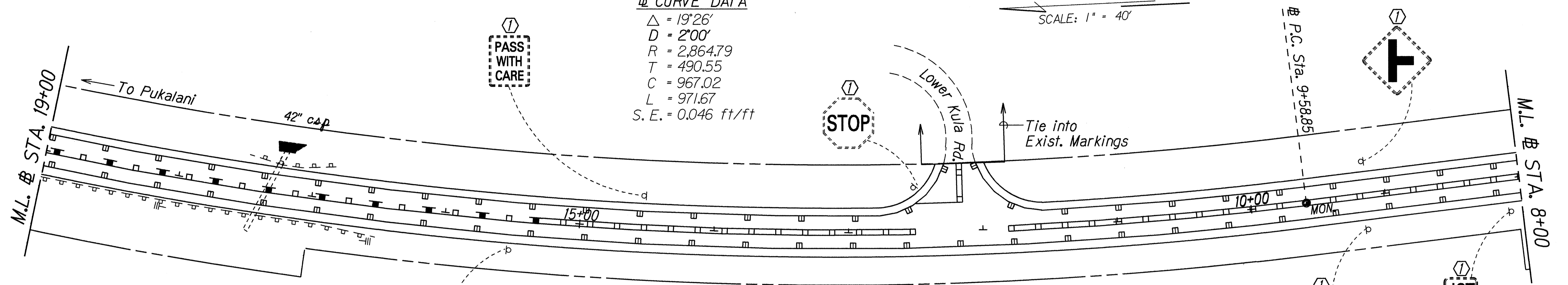


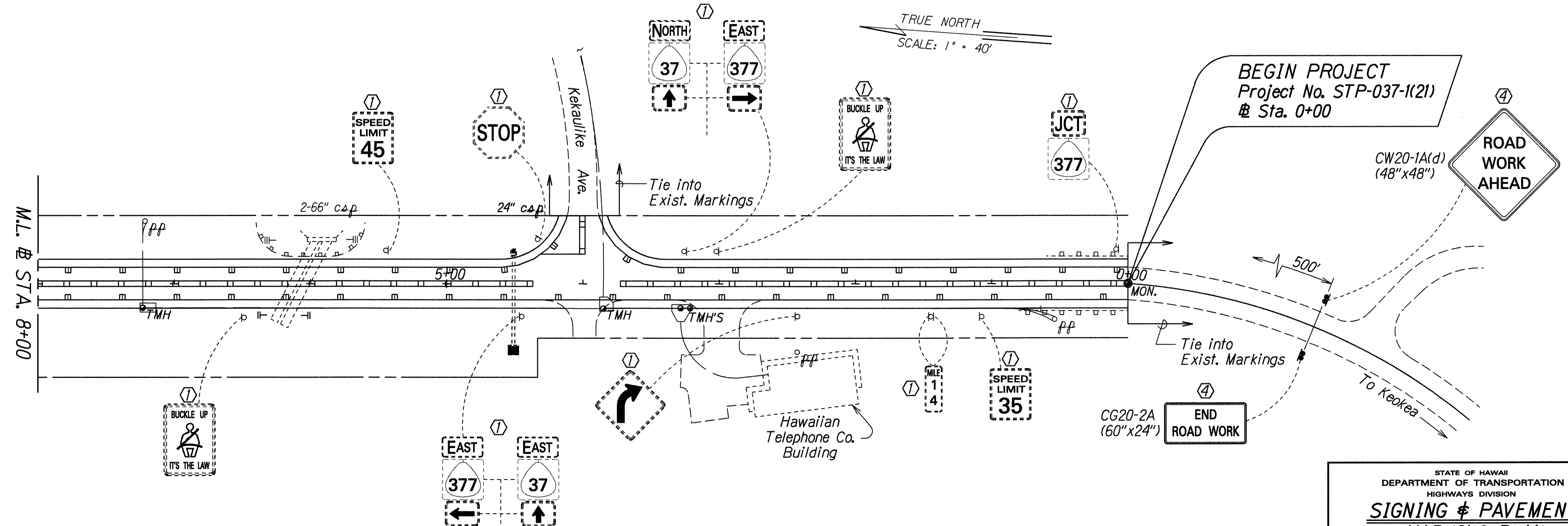
FED. ROAD DIST. NO.	STATE	FED. AID PROJ. NO.	FISCAL YEAR	SHEET NO.	TOTAL SHEETS
HAWAII	HAW.	STP-037-1(21)	1998	24	40

**CURVE DATA**  
 $\Delta = 19^{\circ}26'$   
 $D = 2^{\circ}00'$   
 $R = 2,864.79$   
 $T = 490.55$   
 $C = 967.02$   
 $L = 971.67$   
 $S. E. = 0.046 \text{ ft/ft}$

TRUE NORTH  
 SCALE: 1" = 40'



TRUE NORTH  
 SCALE: 1" = 40'



DATE: 7-8-98  
 DESIGNED BY: JG  
 CHECKED BY: JG  
 QUANTITIES BY: JG  
 TRACED BY: JG  
 ORIGINAL PLAN: JG

DATE	REVISION
7-8-98	Revised Project No. in "Begin Project" flag per Addendum No. 1.

- KEY:**
- ① Exist. Sign(s) & Post(s) to Remain
  - ② Remove Exist. Sign(s) & Post(s)
  - ③ Remove Exist. & Install New Sign(s) & Post(s)
  - ④ Install New Sign(s) & Post(s)

STATE OF HAWAII  
 DEPARTMENT OF TRANSPORTATION  
 HIGHWAYS DIVISION

**SIGNING & PAVEMENT MARKING PLAN**

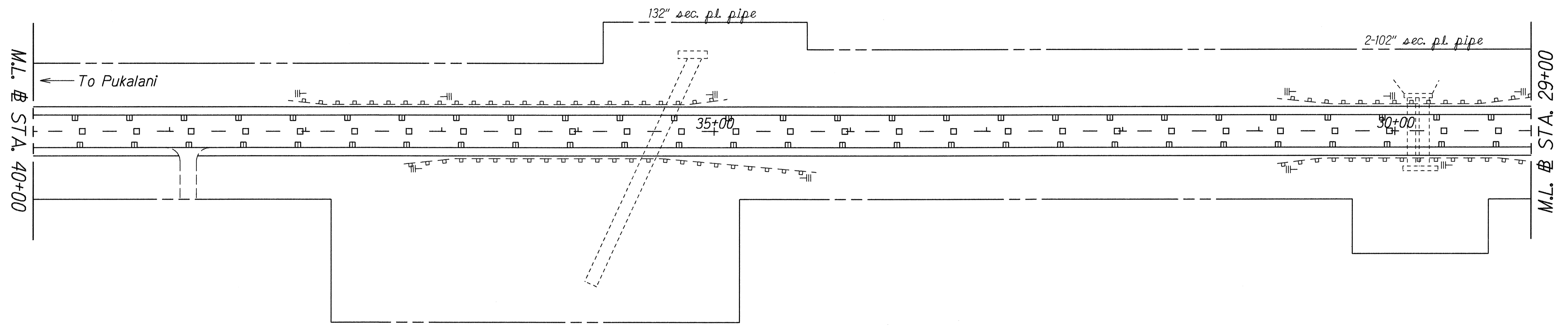
KULA HIGHWAY RESURFACING  
 Kekaulike Avenue to Lower Kula Road  
 Fed. Aid Project No. STP-037-1(21)

Scale: 1" = 40' Date: August, 1997

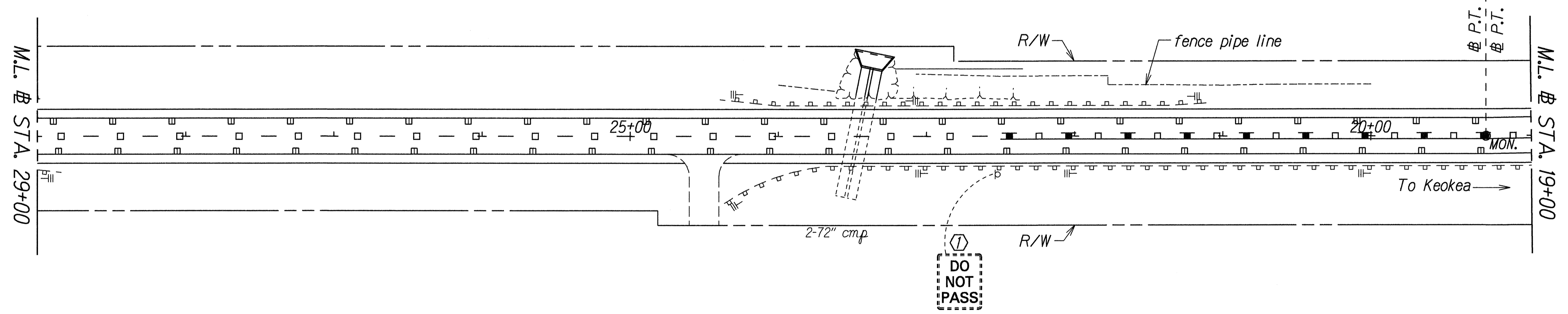
SHEET No. 1 OF 14 SHEETS

FED. ROAD DIST. NO.	STATE	FED. AID PROJ. NO.	FISCAL YEAR	SHEET NO.	TOTAL SHEETS
HAWAII	HAW.	STP-037-1(21)	1998	25	40

TRUE NORTH  
SCALE: 1" = 40'



TRUE NORTH  
SCALE: 1" = 40'



DATE: 8/10/98  
 SURVEY PLOTTED BY: [Signature]  
 DRAWN BY: [Signature]  
 TRACED BY: [Signature]  
 DESIGNED BY: [Signature]  
 QUANTITIES BY: [Signature]  
 CHECKED BY: [Signature]

- KEY:
- ① Exist. Sign(s) & Post(s) to Remain
  - ② Remove Exist. Sign(s) & Post(s)
  - ③ Remove Exist. & Install New Sign(s) & Post(s)
  - ④ Install New Sign(s) & Post(s)

STATE OF HAWAII  
 DEPARTMENT OF TRANSPORTATION  
 HIGHWAYS DIVISION

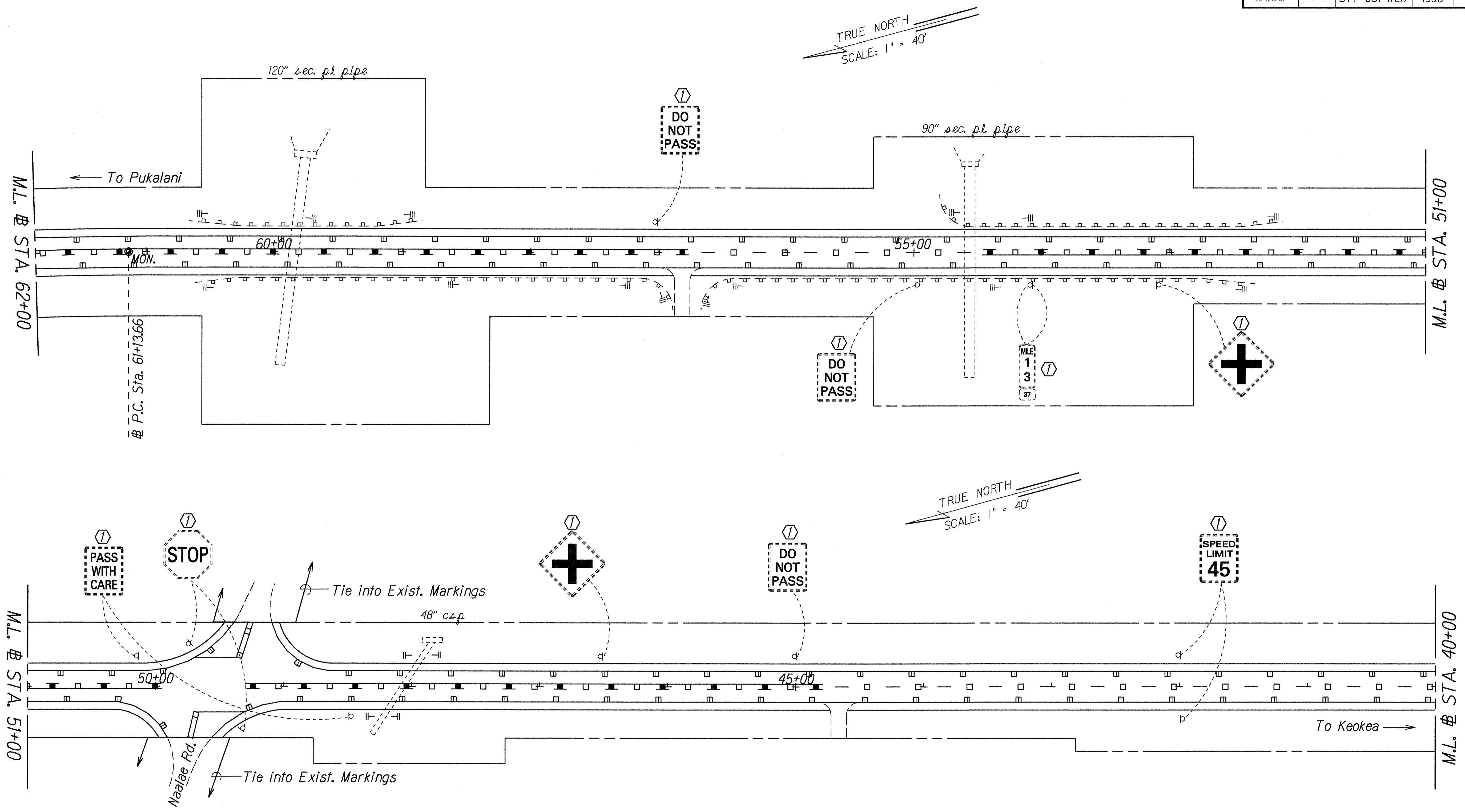
**SIGNING & PAVEMENT  
 MARKING PLAN**

KULA HIGHWAY RESURFACING  
 Kekaulike Avenue to Lower Kula Road  
 Fed. Aid Project No. STP-037-1(21)

Scale: 1" = 40'      Date: August, 1997

SHEET No. 2 OF 14 SHEETS

FED. ROAD DIST. NO.	STATE	FED. AID PROJ. NO.	FISCAL YEAR	SHEET NO.	TOTAL SHEETS
HAWAII	HAW.	STP-037-1(21)	1998	26	40



DATE: Aug. 1997  
 SURVEY PLOTTED BY: [blank]  
 DRAWN BY: [blank]  
 DESIGNED BY: [blank]  
 CHECKED BY: [blank]

- KEY:**
- ① Exist. Sign(s) & Post(s) to Remain
  - ② Remove Exist. Sign(s) & Post(s)
  - ③ Remove Exist. & Install New Sign(s) & Post(s)
  - ④ Install New Sign(s) & Post(s)

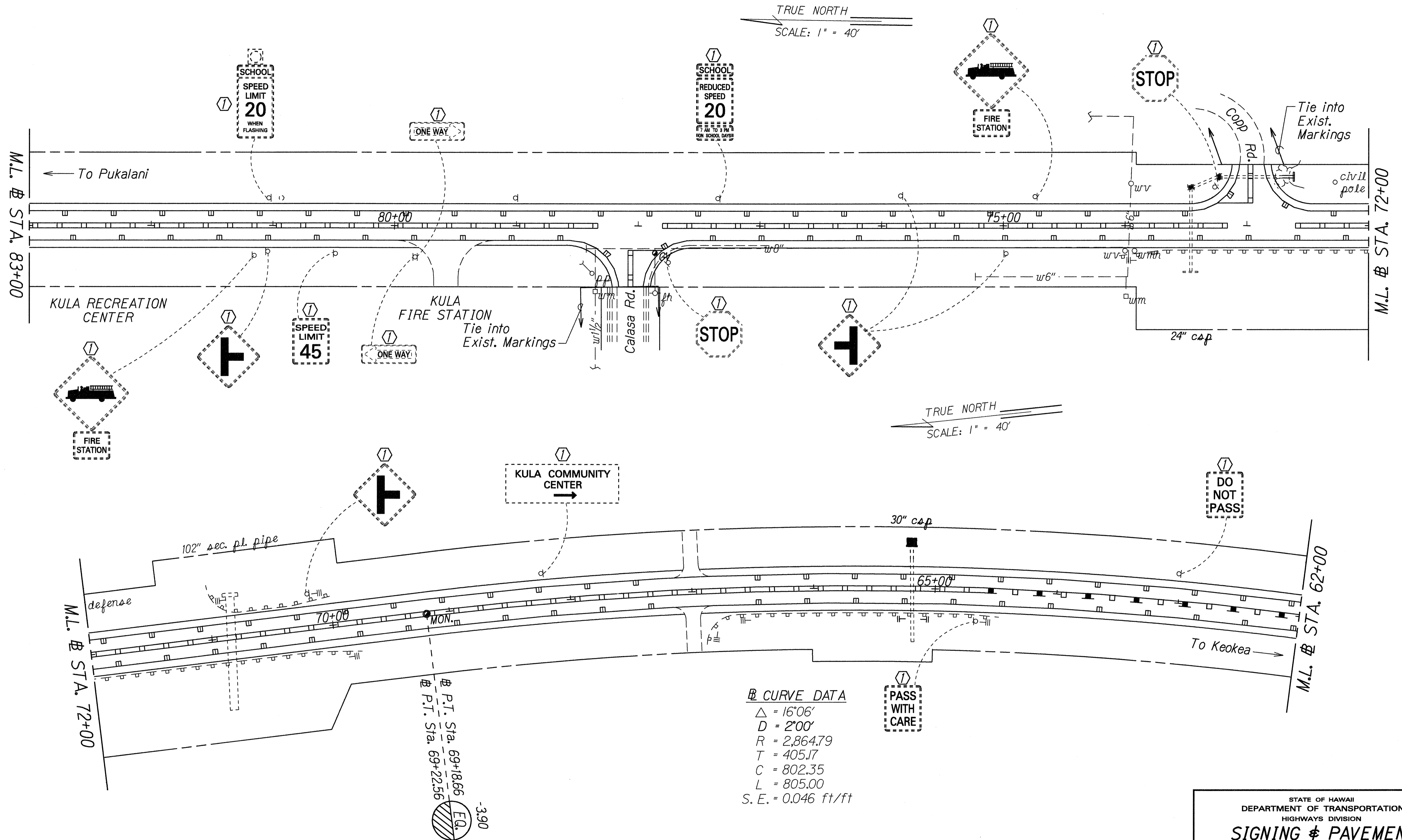
STATE OF HAWAII  
 DEPARTMENT OF TRANSPORTATION  
 HIGHWAYS DIVISION

**SIGNING & PAVEMENT  
 MARKING PLAN**

KULA HIGHWAY RESURFACING  
 Kekaulike Avenue to Lower Kula Road  
 Fed. Aid Project No. STP-037-1(21)  
 Scale: 1" = 40' Date: August, 1997

SHEET No. 3 OF 14 SHEETS

FED. ROAD DIST. NO.	STATE	FED. AID PROJ. NO.	FISCAL YEAR	SHEET NO.	TOTAL SHEETS
HAWAII	HAW.	STP-037-1(21)	1998	27	40



ORIGINAL PLAN: \_\_\_\_\_  
 SURVEY PLACED BY: \_\_\_\_\_  
 DRAWN BY: \_\_\_\_\_  
 TRACED BY: \_\_\_\_\_  
 DESIGNED BY: \_\_\_\_\_  
 CHECKED BY: \_\_\_\_\_  
 COUNCILOR BY: \_\_\_\_\_  
 DATE: Aug. 1997

- KEY:**
- ① Exist. Sign(s) & Post(s) to Remain
  - ② Remove Exist. Sign(s) & Post(s)
  - ③ Remove Exist. & Install New Sign(s) & Post(s)
  - ④ Install New Sign(s) & Post(s)

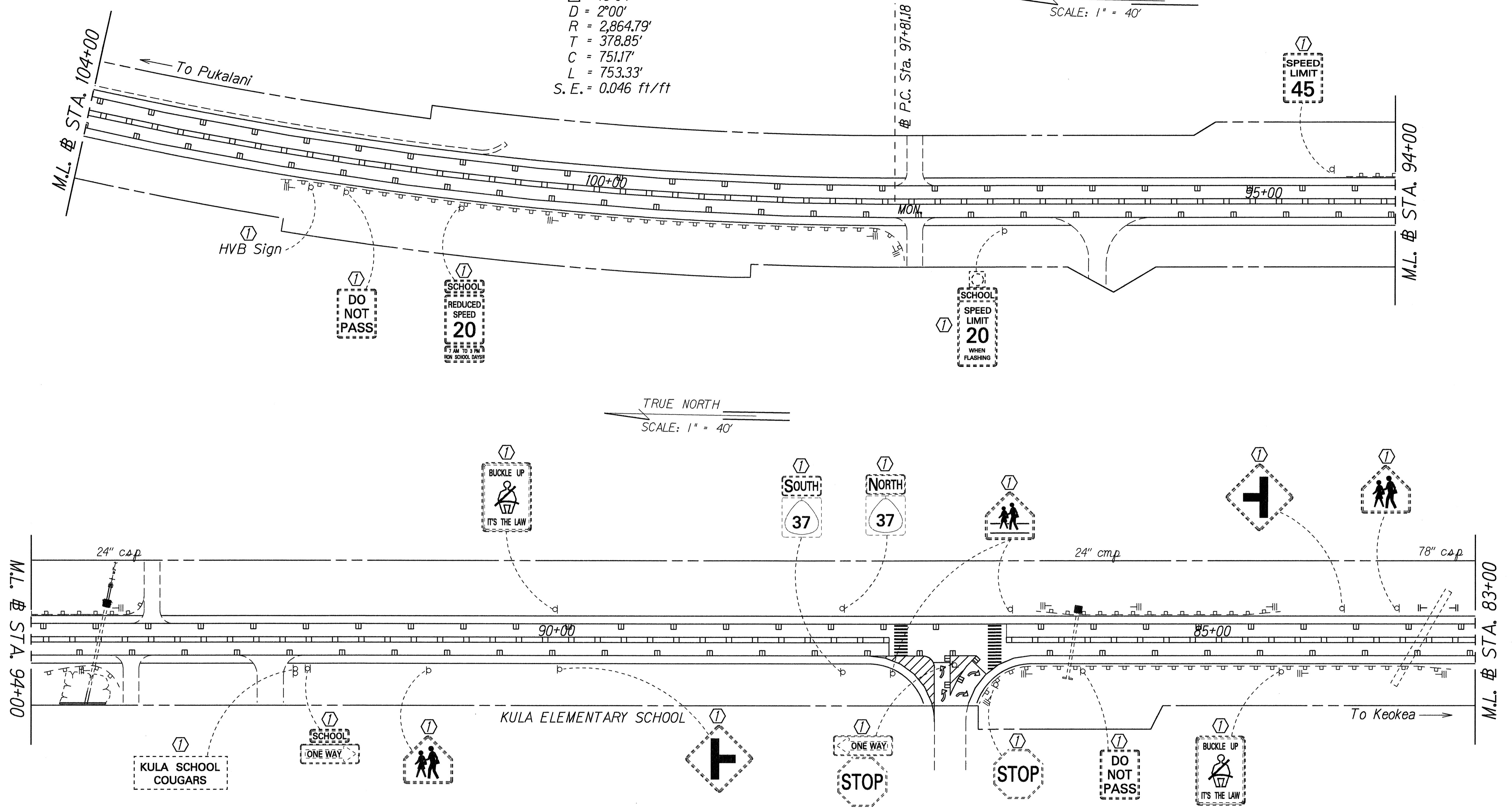
STATE OF HAWAII  
 DEPARTMENT OF TRANSPORTATION  
 HIGHWAYS DIVISION  
**SIGNING & PAVEMENT MARKING PLAN**  
 KULA HIGHWAY RESURFACING  
 Kekaulike Avenue to Lower Kula Road  
 Fed. Aid Project No. STP-037-1(21)  
 Scale: 1" = 40' Date: August, 1997  
 SHEET No. 4 OF 14 SHEETS

FED. ROAD DIST. NO.	STATE	FED. AID PROJ. NO.	FISCAL YEAR	SHEET NO.	TOTAL SHEETS
HAWAII	HAW.	STP-037-K(21)	1998	28	40

**⊕ CURVE DATA**

$\Delta = 15^{\circ}04'$   
 $D = 2^{\circ}00'$   
 $R = 2,864.79'$   
 $T = 378.85'$   
 $C = 751.17'$   
 $L = 753.33'$   
 $S.E. = 0.046 \text{ ft/ft}$

TRUE NORTH  
SCALE: 1" = 40'



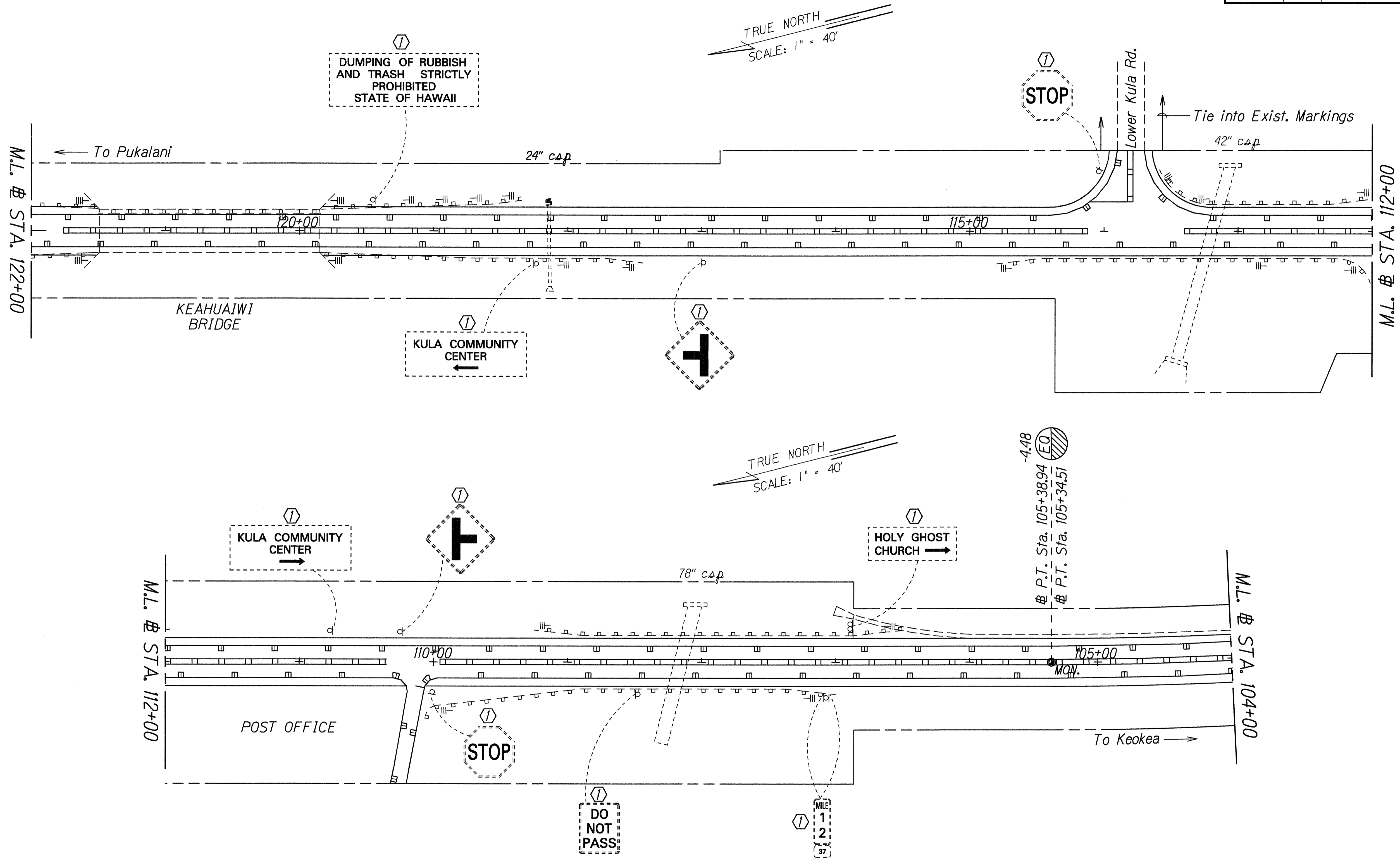
TRUE NORTH  
SCALE: 1" = 40'

DATE	Aug. 1997
SURVEY PLOTTED BY	
DRAWN BY	JG
DESIGNED BY	CR
CHECKED BY	
ORIGINAL PLAN	
NOTE: WORK	
DATE	
DESIGNED BY	
CHECKED BY	
DATE	

- KEY:**
- ① Exist. Sign(s) & Post(s) to Remain
  - ② Remove Exist. Sign(s) & Post(s)
  - ③ Remove Exist. & Install New Sign(s) & Post(s)
  - ④ Install New Sign(s) & Post(s)

STATE OF HAWAII  
 DEPARTMENT OF TRANSPORTATION  
 HIGHWAYS DIVISION  
**SIGNING & PAVEMENT MARKING PLAN**  
 KULA HIGHWAY RESURFACING  
 Kekaulike Avenue to Lower Kula Road  
 Fed. Aid Project No. STP-037-K(21)  
 Scale: 1" = 40' Date: August, 1997  
 SHEET No. 5 OF 14 SHEETS

FED. ROAD DIST. NO.	STATE	FED. AID PROJ. NO.	FISCAL YEAR	SHEET NO.	TOTAL SHEETS
HAWAII	HAW.	STP-037-K(21)	1998	29	40

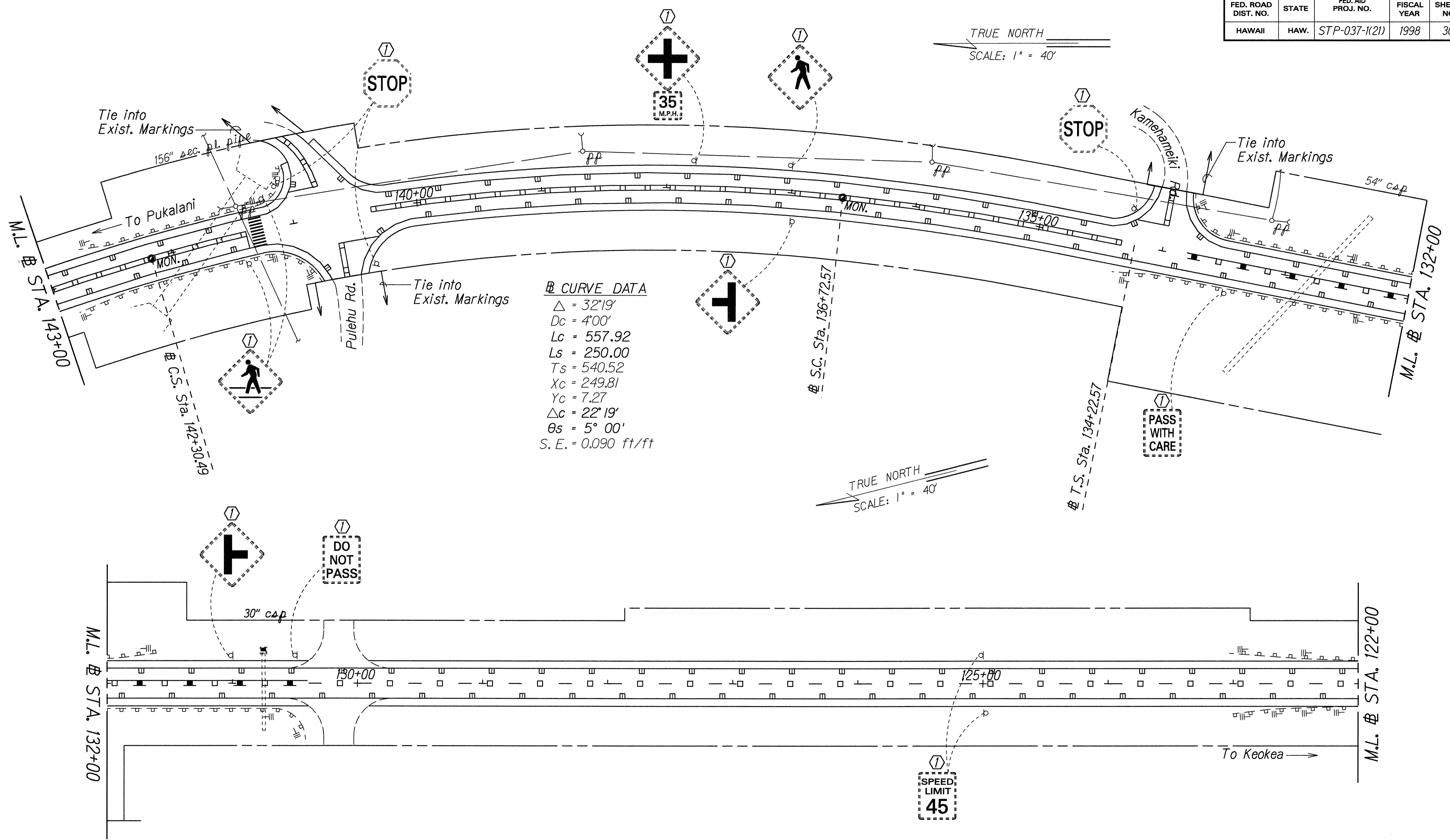


ORIGINAL SURVEY PLANNED BY: \_\_\_\_\_  
 PLAN: \_\_\_\_\_  
 DATE: Aug. 1997  
 SUPERVISED BY: \_\_\_\_\_  
 DESIGNED BY: CR  
 CHECKED BY: \_\_\_\_\_  
 DRAWN BY: \_\_\_\_\_  
 COUNCILOR: \_\_\_\_\_

- KEY:**
- ① Exist. Sign(s) & Post(s) to Remain
  - ② Remove Exist. Sign(s) & Post(s)
  - ③ Remove Exist. & Install New Sign(s) & Post(s)
  - ④ Install New Sign(s) & Post(s)

STATE OF HAWAII  
 DEPARTMENT OF TRANSPORTATION  
 HIGHWAYS DIVISION  
**SIGNING & PAVEMENT MARKING PLAN**  
 KULA HIGHWAY RESURFACING  
 Kekaulike Avenue to Lower Kula Road  
 Fed. Aid Project No. STP-037-K(21)  
 Scale: 1" = 40' Date: August, 1997  
 SHEET No. 6 OF 14 SHEETS

FED. ROAD DIST. NO.	STATE	FED. AID PROJ. NO.	FISCAL YEAR	SHEET NO.	TOTAL SHEETS
HAWAII	HAW.	STP-037-1(21)	1998	30	40



**CURVE DATA**  
 $\Delta = 32^{\circ}19'$   
 $D_c = 4^{\circ}00'$   
 $L_c = 557.92$   
 $L_s = 250.00$   
 $T_s = 540.52$   
 $X_c = 249.81$   
 $Y_c = 7.27$   
 $\Delta_c = 22^{\circ}19'$   
 $\theta_s = 5^{\circ}00'$   
 $S. E. = 0.090 \text{ ft/ft}$

DATE: 08/19/97  
 SURVEY PLOTTED BY: J.C.  
 DRAWN BY: J.C.  
 DESIGNED BY: J.C.  
 CHECKED BY: J.C.  
 QUANTITIES BY: J.C.  
 CONSULTED BY: J.C.

- KEY:**
- ① Exist. Sign(s) & Post(s) to Remain
  - ② Remove Exist. Sign(s) & Post(s)
  - ③ Remove Exist. & Install New Sign(s) & Post(s)
  - ④ Install New Sign(s) & Post(s)

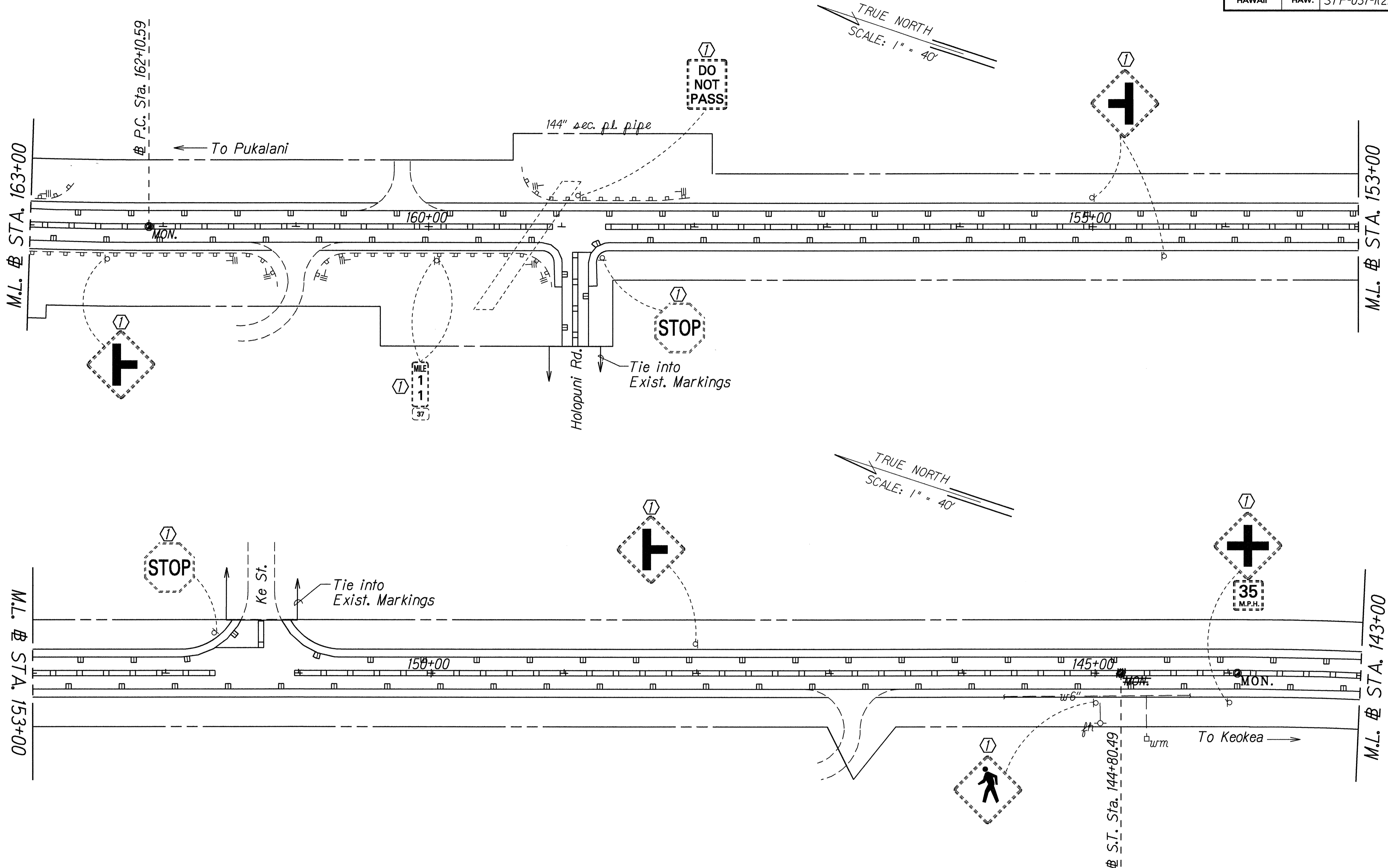
STATE OF HAWAII  
 DEPARTMENT OF TRANSPORTATION  
 HIGHWAYS DIVISION

**SIGNING & PAVEMENT  
 MARKING PLAN**

KULA HIGHWAY RESURFACING  
 Kekaulike Avenue to Lower Kula Road  
 Fed. Aid Project No. STP-037-1(21)  
 Scale: 1" = 40'      Date: August, 1997

SHEET No. 7 OF 14 SHEETS

FED. ROAD DIST. NO.	STATE	FED. AID PROJ. NO.	FISCAL YEAR	SHEET NO.	TOTAL SHEETS
HAWAII	HAW.	STP-037-K(21)	1998	31	40



TRUE NORTH  
SCALE: 1" = 40'

TRUE NORTH  
SCALE: 1" = 40'

DESIGNED BY	DATE
DRAWN BY	AUG. 1997
TRACED BY	
DESIGNED BY	
QUANTITIES BY	
CHECKED BY	

LEGEND FOR AS-BUILT POSTINGS	
	Squiggly line for as-built deletion
	Double line for as-built deletion
Roadway	Text for as-built posting

KEY:

①	Exist. Sign(s) & Post(s) to Remain
②	Remove Exist. Sign(s) & Post(s)
③	Remove Exist. & Install New Sign(s) & Post(s)
④	Install New Sign(s) & Post(s)

STATE OF HAWAII  
DEPARTMENT OF TRANSPORTATION  
HIGHWAYS DIVISION

**SIGNING & PAVEMENT  
MARKING PLAN**

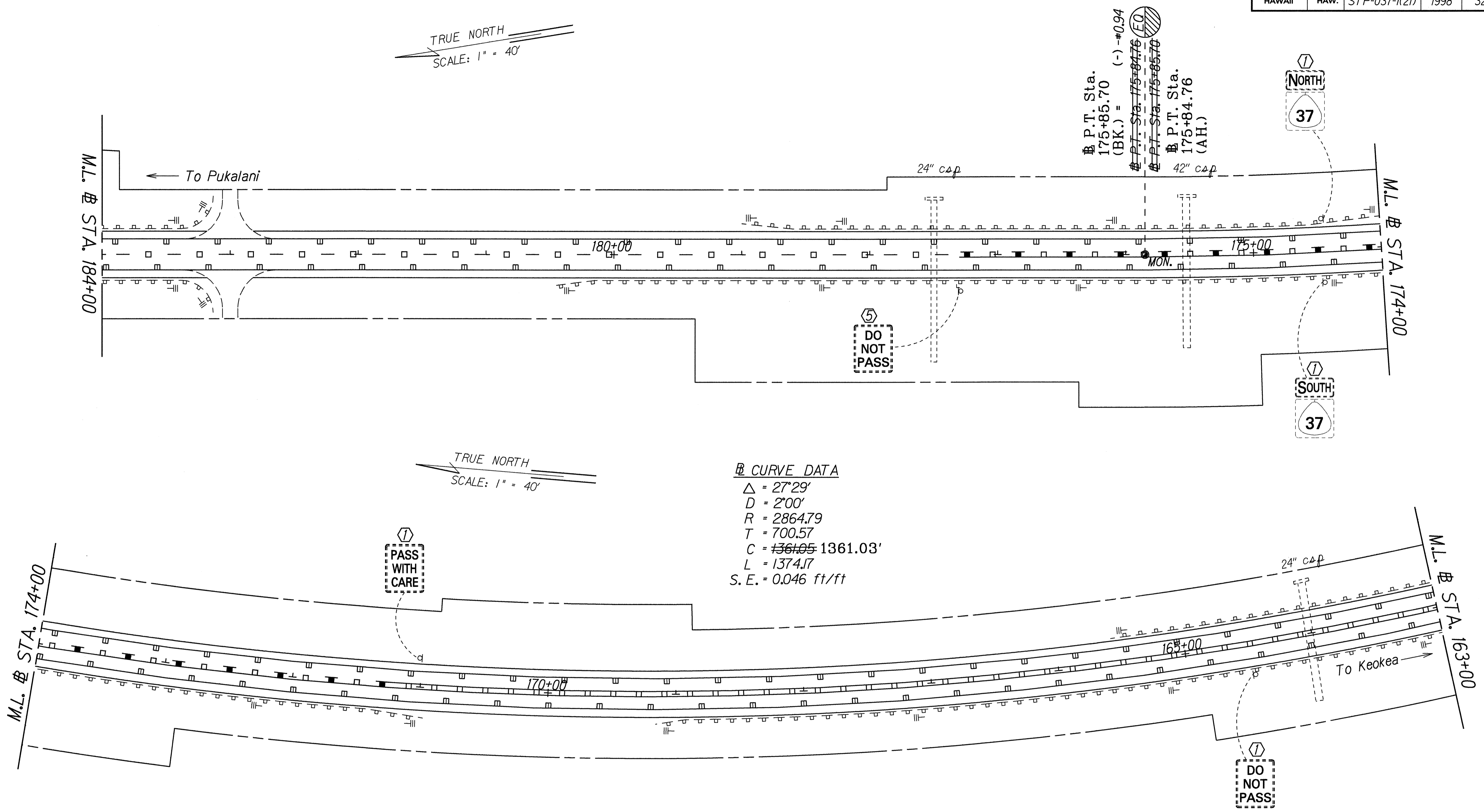
KULA HIGHWAY RESURFACING  
Kekaulike Avenue to Lower Kula Road  
Fed. Aid Project No. STP-037-K(21)  
Scale: 1" = 40' Date: August, 1997

SHEET No. 8 OF 14 SHEETS

"AS-BUILT"

FED. ROAD DIST. NO.	STATE	FED. AID PROJ. NO.	FISCAL YEAR	SHEET NO.	TOTAL SHEETS
HAWAII	HAW.	STP-037-K(21)	1998	32	40

TRUE NORTH  
SCALE: 1" = 40'



TRUE NORTH  
SCALE: 1" = 40'

CURVE DATA  
 $\Delta = 27^\circ 29'$   
 $D = 2' 00''$   
 $R = 2864.79$   
 $T = 700.57$   
 $C = 1361.03'$   
 $L = 1374.17$   
 $S.E. = 0.046 \text{ ft/ft}$

DESIGNED BY	DATE
DESIGNED BY	AUG. 1997
DESIGNED BY	
DESIGNED BY	
DESIGNED BY	
DESIGNED BY	
DESIGNED BY	
DESIGNED BY	
DESIGNED BY	
DESIGNED BY	

LEGEND FOR AS-BUILT POSTINGS	
	Squiggly line for as-built deletion
	Double line for as-built deletion
Roadway	Text for as-built posting

- KEY:
- (1) Exist. Sign(s) & Post(s) to Remain
  - (2) Remove Exist. Sign(s) & Post(s)
  - (3) Remove Exist. & Install New Sign(s) & Post(s)
  - (4) Install New Sign(s) & Post(s)
  - (5) Relocate Exist. Sign(s) & Post(s)

STATE OF HAWAII  
DEPARTMENT OF TRANSPORTATION  
HIGHWAYS DIVISION

**SIGNING & PAVEMENT MARKING PLAN**

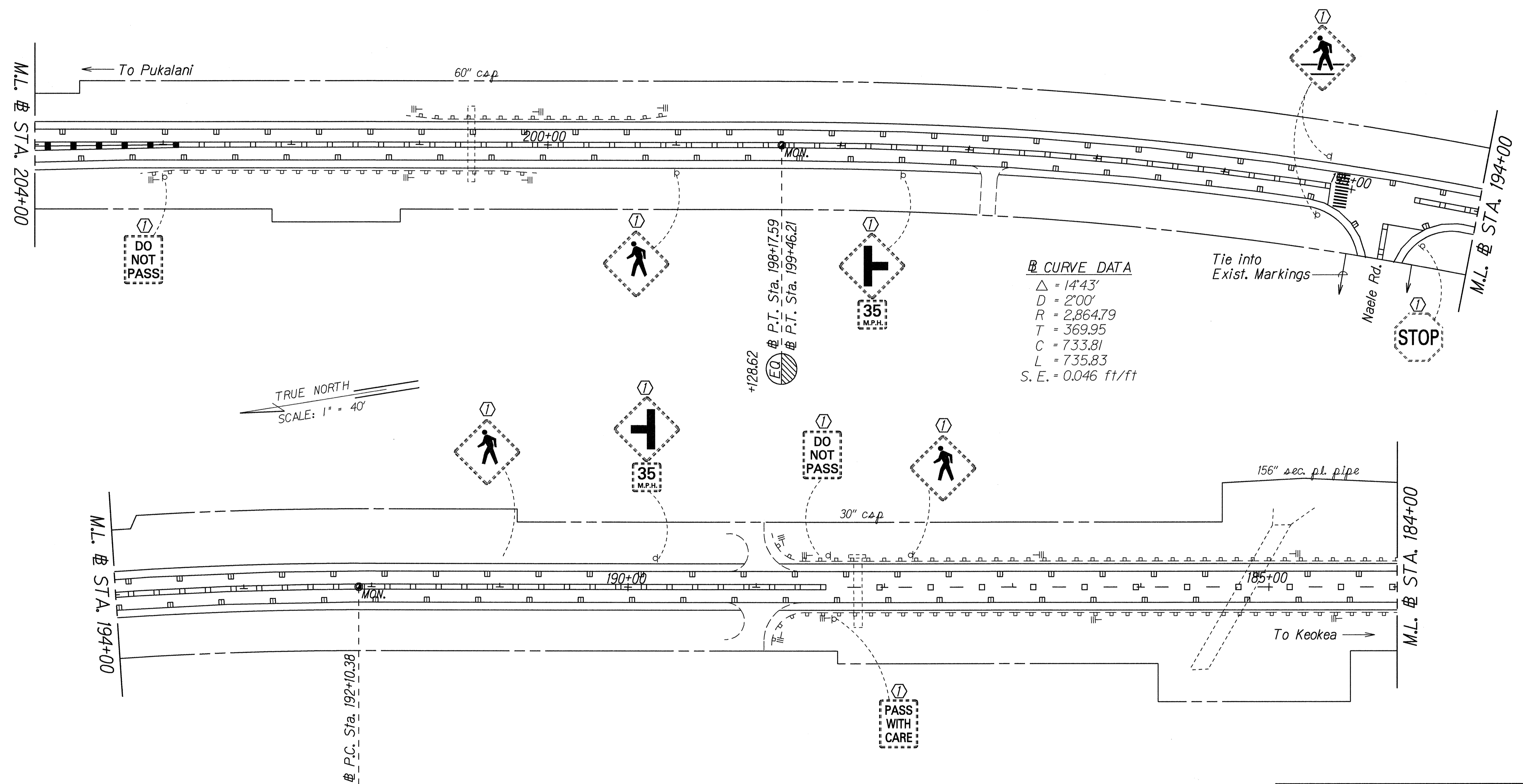
KULA HIGHWAY RESURFACING  
Kekaulike Avenue to Lower Kula Road  
Fed. Aid Project No. STP-037-K(21)  
Scale: 1" = 40' Date: August, 1997

SHEET No. 9 OF 14 SHEETS

"AS-BUILT"

FED. ROAD DIST. NO.	STATE	FED. AID PROJ. NO.	FISCAL YEAR	SHEET NO.	TOTAL SHEETS
HAWAII	HAW.	STP-037-1(21)	1998	33	40

TRUE NORTH  
SCALE: 1" = 40'



**CURVE DATA**  
 $\Delta = 14^{\circ}43'$   
 $D = 2^{\circ}00'$   
 $R = 2,864.79$   
 $T = 369.95$   
 $C = 733.81$   
 $L = 735.83$   
 $S.E. = 0.046 \text{ ft/ft}$

TRUE NORTH  
SCALE: 1" = 40'

DATE: Aug. 1997  
 SURVEY PLOTTED BY: [ ]  
 DRAWN BY: [ ]  
 TRACED BY: [ ]  
 DESIGNED BY: [ ]  
 QUANTITIES BY: [ ]  
 CHECKED BY: [ ]

- KEY:**
- ① Exist. Sign(s) & Post(s) to Remain
  - ② Remove Exist. Sign(s) & Post(s)
  - ③ Remove Exist. & Install New Sign(s) & Post(s)
  - ④ Install New Sign(s) & Post(s)

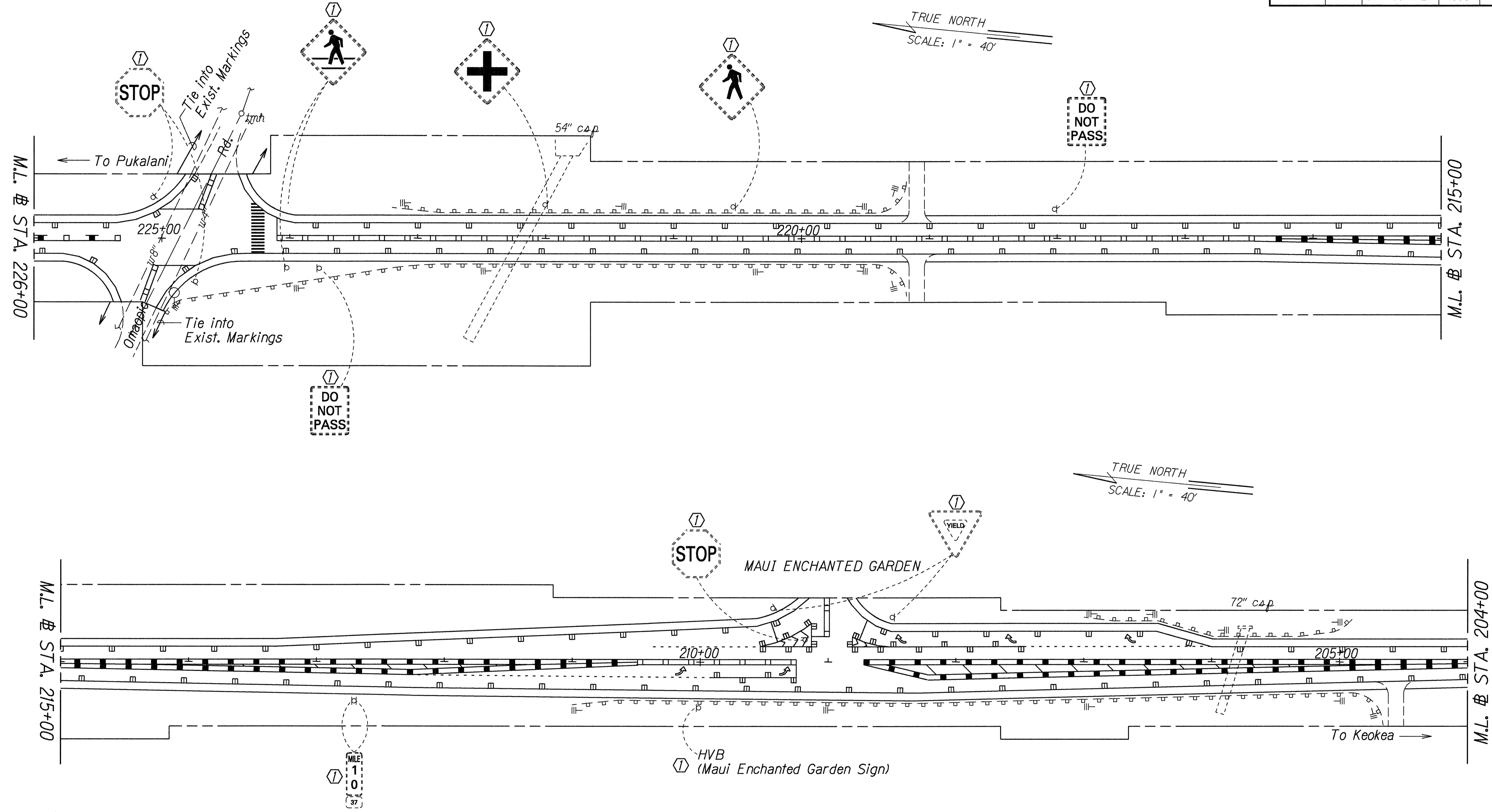
STATE OF HAWAII  
 DEPARTMENT OF TRANSPORTATION  
 HIGHWAYS DIVISION

**SIGNING & PAVEMENT  
 MARKING PLAN**

KULA HIGHWAY RESURFACING  
 Kekaulike Avenue to Lower Kula Road  
 Fed. Aid Project No. STP-037-1(21)  
 Scale: 1" = 40'      Date: August, 1997

SHEET No. 10 OF 14 SHEETS

FED. ROAD DIST. NO.	STATE	FED. AID PROJ. NO.	FISCAL YEAR	SHEET NO.	TOTAL SHEETS
HAWAII	HAW.	STP-037-1(21)	1998	34	40



DATE: 8/97  
 SURVEY PLOTTED BY: J.C.  
 DRAWN BY: J.C.  
 DESIGNED BY: J.C.  
 CHECKED BY: J.C.

- KEY:**
- ① Exist. Sign(s) & Post(s) to Remain
  - ② Remove Exist. Sign(s) & Post(s)
  - ③ Remove Exist. & Install New Sign(s) & Post(s)
  - ④ Install New Sign(s) & Post(s)

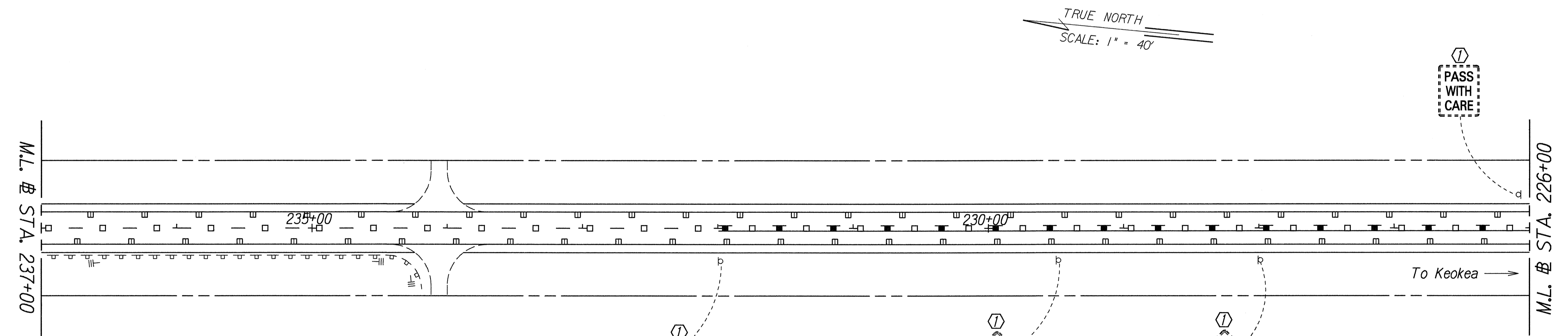
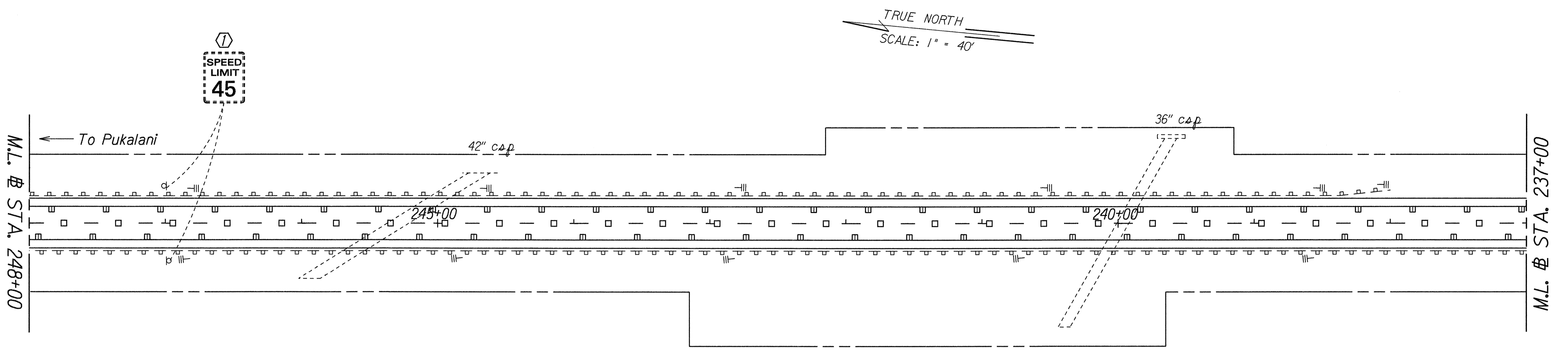
STATE OF HAWAII  
 DEPARTMENT OF TRANSPORTATION  
 HIGHWAYS DIVISION

**SIGNING & PAVEMENT  
 MARKING PLAN**

KULA HIGHWAY RESURFACING  
 Kekaulike Avenue to Lower Kula Road  
 Fed. Aid Project No. STP-037-1(21)  
 Scale: 1" = 40' Date: August, 1997

SHEET No. 11 OF 14 SHEETS

FED. ROAD DIST. NO.	STATE	FED. AID PROJ. NO.	FISCAL YEAR	SHEET NO.	TOTAL SHEETS
HAWAII	HAW.	STP-037-1(21)	1998	35	40



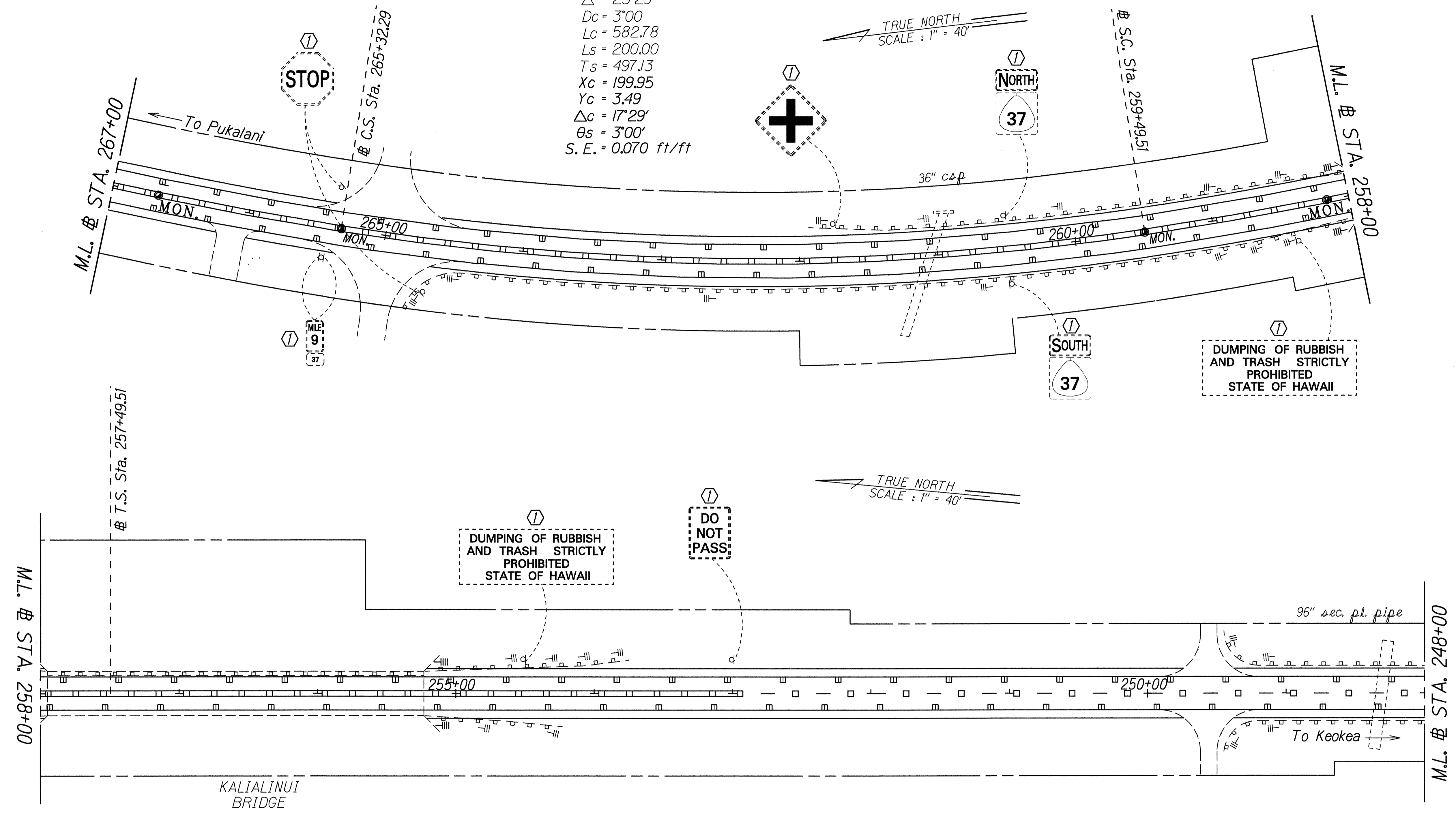
ORIGINAL PLAN  
 SURVEY PLOTTED BY: [ ]  
 DRAWN BY: [ ]  
 TRACED BY: [ ]  
 DESIGNED BY: [ ]  
 CHECKED BY: [ ]  
 DATE: Aug. 1997

- KEY:**
- ① Exist. Sign(s) & Post(s) to Remain
  - ② Remove Exist. Sign(s) & Post(s)
  - ③ Remove Exist. & Install New Sign(s) & Post(s)
  - ④ Install New Sign(s) & Post(s)

STATE OF HAWAII  
 DEPARTMENT OF TRANSPORTATION  
 HIGHWAYS DIVISION  
**SIGNING & PAVEMENT MARKING PLAN**  
 KULA HIGHWAY RESURFACING  
 Kekaulike Avenue to Lower Kula Road  
 Fed. Aid Project No. STP-037-1(21)  
 Scale: 1" = 40' Date: August, 1997  
 SHEET No. 12 OF 14 SHEETS

FED. ROAD DIST. NO.	STATE	FED. AID PROJ. NO.	FISCAL YEAR	SHEET NO.	TOTAL SHEETS
HAWAII	HAW.	STP-037-(121)	1998	36	40

**CURVE DATA**  
 $\Delta = 23^{\circ}29'$   
 $Dc = 3^{\circ}00'$   
 $Lc = 582.78$   
 $Ls = 200.00$   
 $Ts = 497.13$   
 $Xc = 199.95$   
 $Yc = 3.49$   
 $\Delta c = 17^{\circ}29'$   
 $\theta s = 3^{\circ}00'$   
 $S.E. = 0.070 \text{ ft/ft}$



DESIGNED BY	DATE
TRACED BY	AUG. 1997
DESIGNED BY	
QUANTITIES BY	
CHECKED BY	

LEGEND FOR AS-BUILT POSTINGS	
	Squiggly line for as-built deletion
	Double line for as-built deletion
Roadway	Text for as-built posting

- KEY:**
- ① Exist. Sign(s) & Post(s) to Remain
  - ② Remove Exist. Sign(s) & Post(s)
  - ③ Remove Exist. & Install New Sign(s) & Post(s)
  - ④ Install New Sign(s) & Post(s)

STATE OF HAWAII  
DEPARTMENT OF TRANSPORTATION  
HIGHWAYS DIVISION

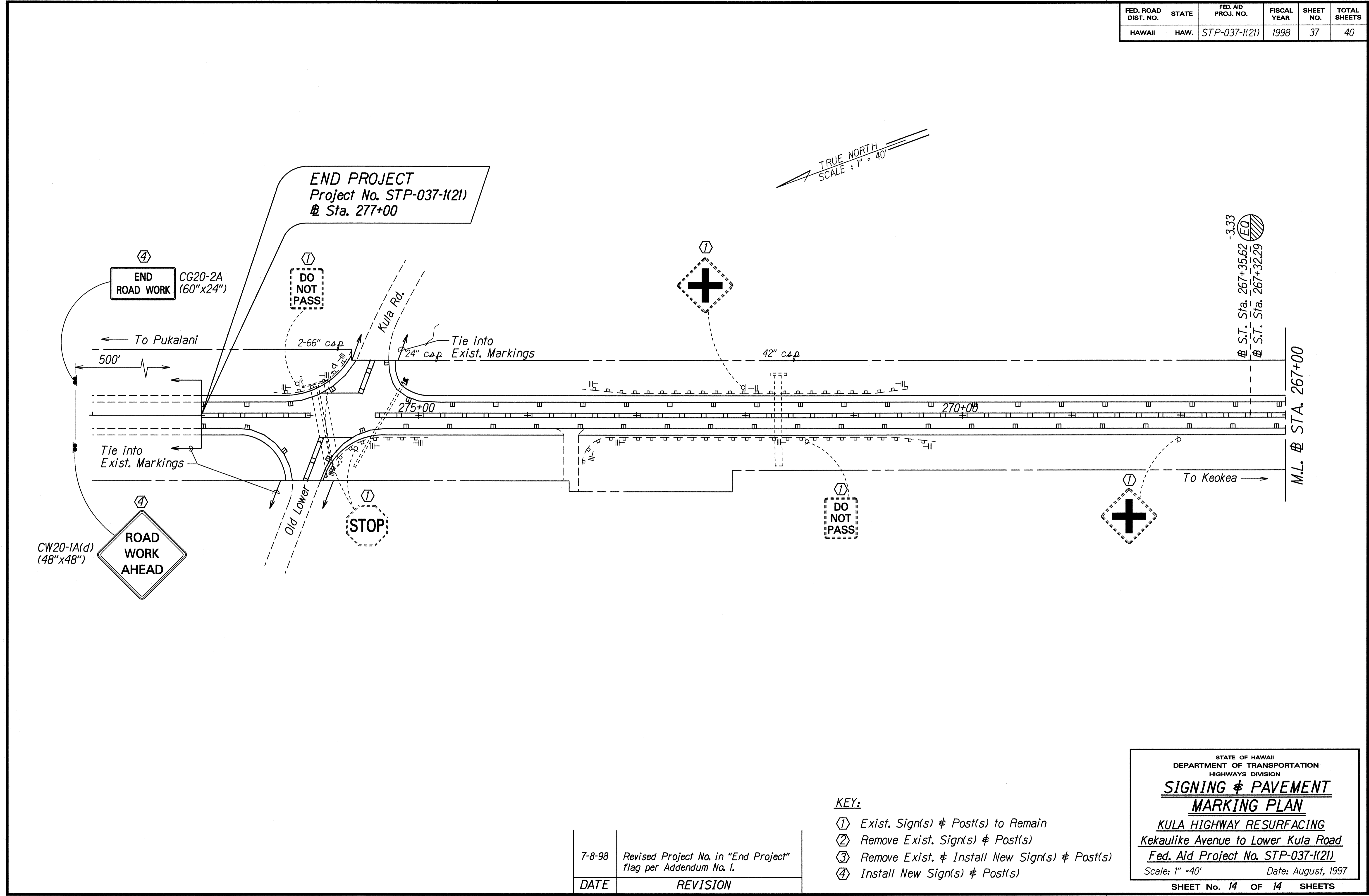
**SIGNING & PAVEMENT  
MARKING PLAN**

KULA HIGHWAY RESURFACING  
Kekaulike Avenue to Lower Kula Road  
Fed. Aid Project No. STP-037-(121)  
Scale: 1" = 40' Date: August, 1997

SHEET No. 13 OF 14 SHEETS

"AS-BUILT"

FED. ROAD DIST. NO.	STATE	FED. AID PROJ. NO.	FISCAL YEAR	SHEET NO.	TOTAL SHEETS
HAWAII	HAW.	STP-037-1(21)	1998	37	40



TRUE NORTH  
SCALE: 1" = 40'

END PROJECT  
Project No. STP-037-1(21)  
# Sta. 277+00

END ROAD WORK  
CG20-2A  
(60"x24")

DO NOT PASS

To Pukalani  
500'

2-66" cap  
Kula Rd.  
Tie into 24" cap Exist. Markings

42" cap

Tie into Exist. Markings

275+00

270+00

-3.33  
S.T. Sta. 267+35.62  
S.T. Sta. 267+32.29

M.L. # STA. 267+00

To Keokea

CW20-1A(d)  
(48"x48")

ROAD WORK AHEAD

STOP

DO NOT PASS

DO NOT PASS

DESIGNED BY	DATE
DRAWN BY	7-8-98
CHECKED BY	
IN CHARGE	
DATE	

DATE	REVISION
7-8-98	Revised Project No. in "End Project" flag per Addendum No. 1.

- KEY:
- ① Exist. Sign(s) & Post(s) to Remain
  - ② Remove Exist. Sign(s) & Post(s)
  - ③ Remove Exist. & Install New Sign(s) & Post(s)
  - ④ Install New Sign(s) & Post(s)

STATE OF HAWAII  
DEPARTMENT OF TRANSPORTATION  
HIGHWAYS DIVISION

**SIGNING & PAVEMENT MARKING PLAN**

KULA HIGHWAY RESURFACING  
Kekaulike Avenue to Lower Kula Road  
Fed. Aid Project No. STP-037-1(21)  
Scale: 1" = 40' Date: August, 1997

SHEET No. 14 OF 14 SHEETS