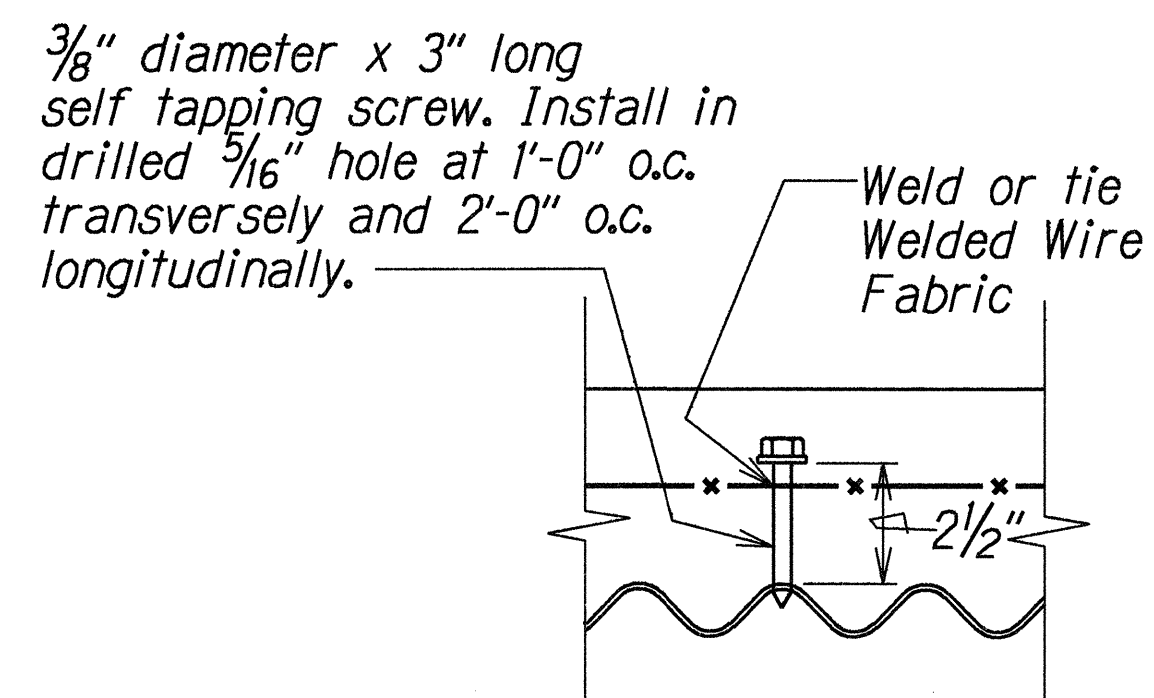
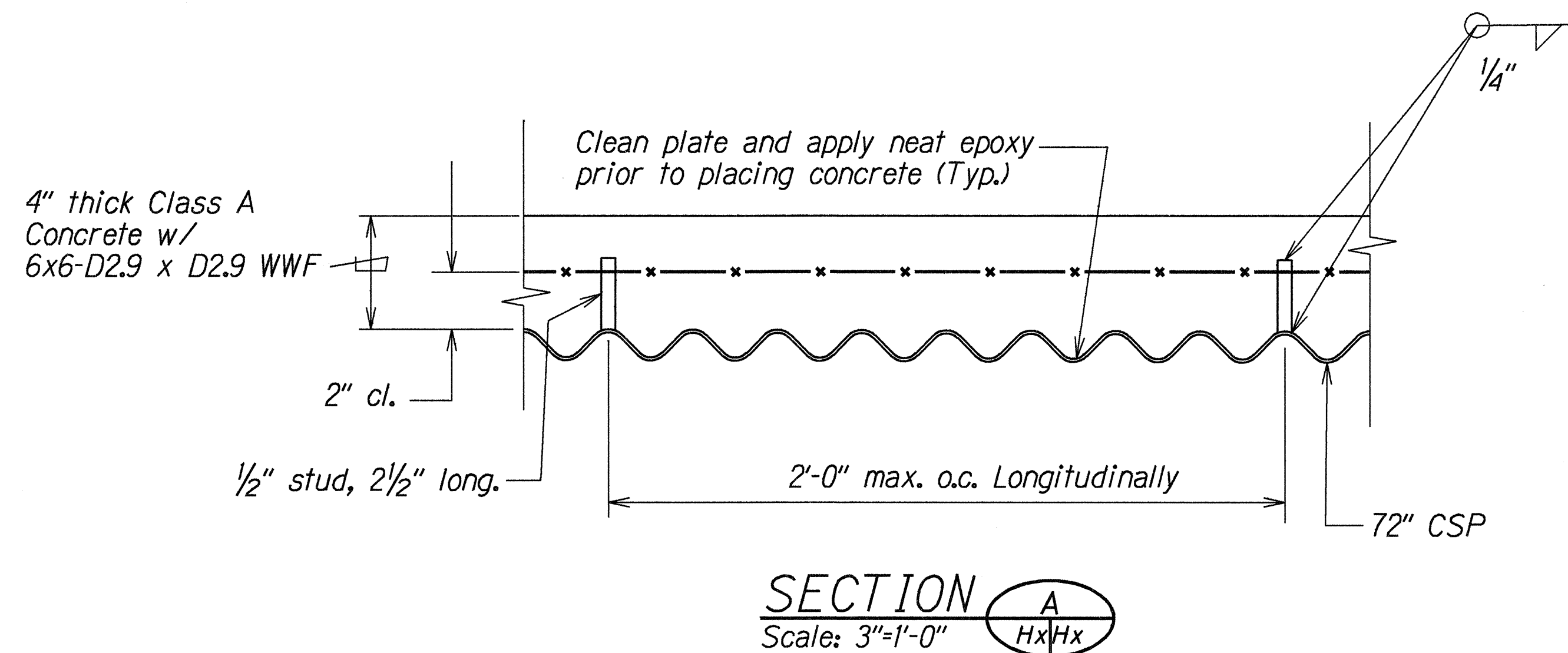
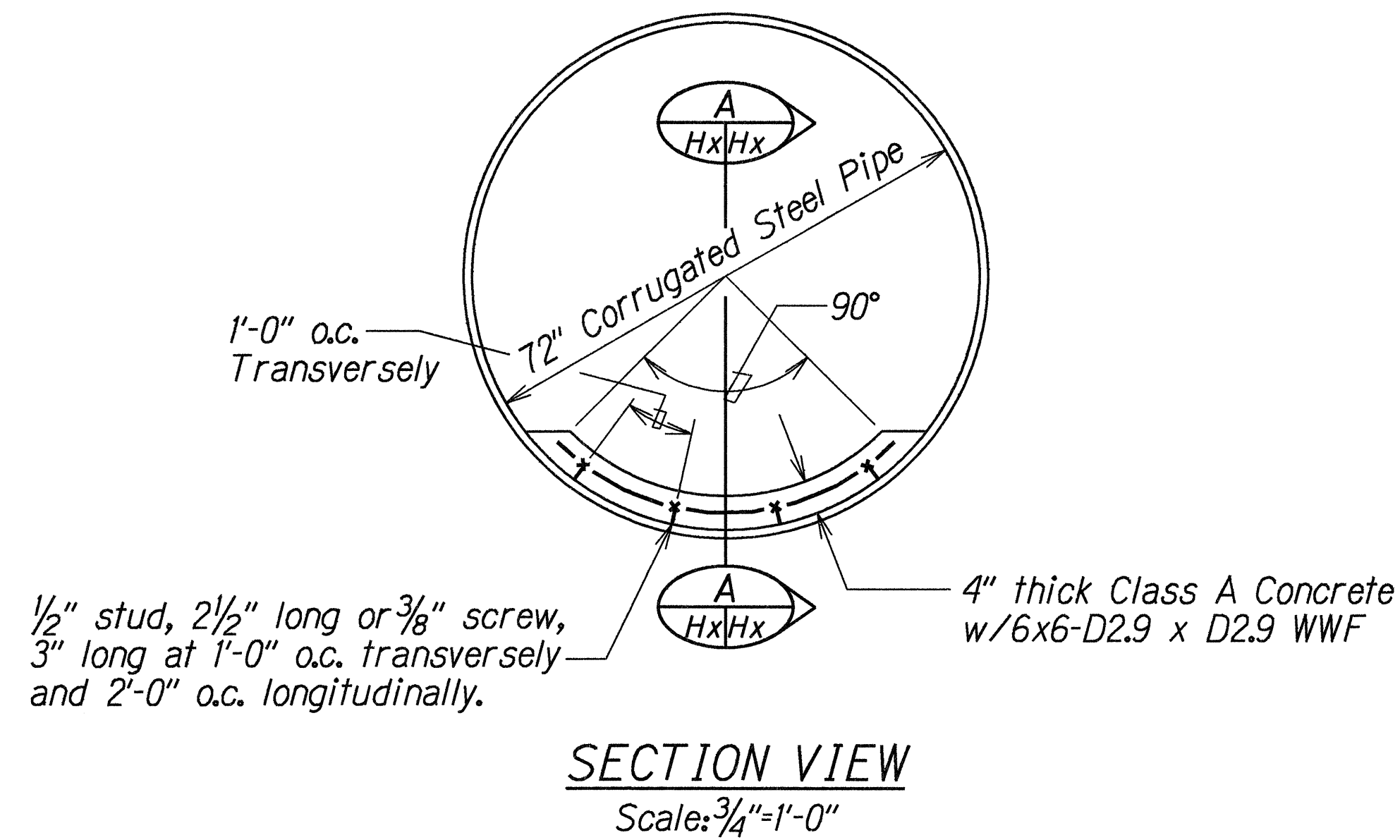
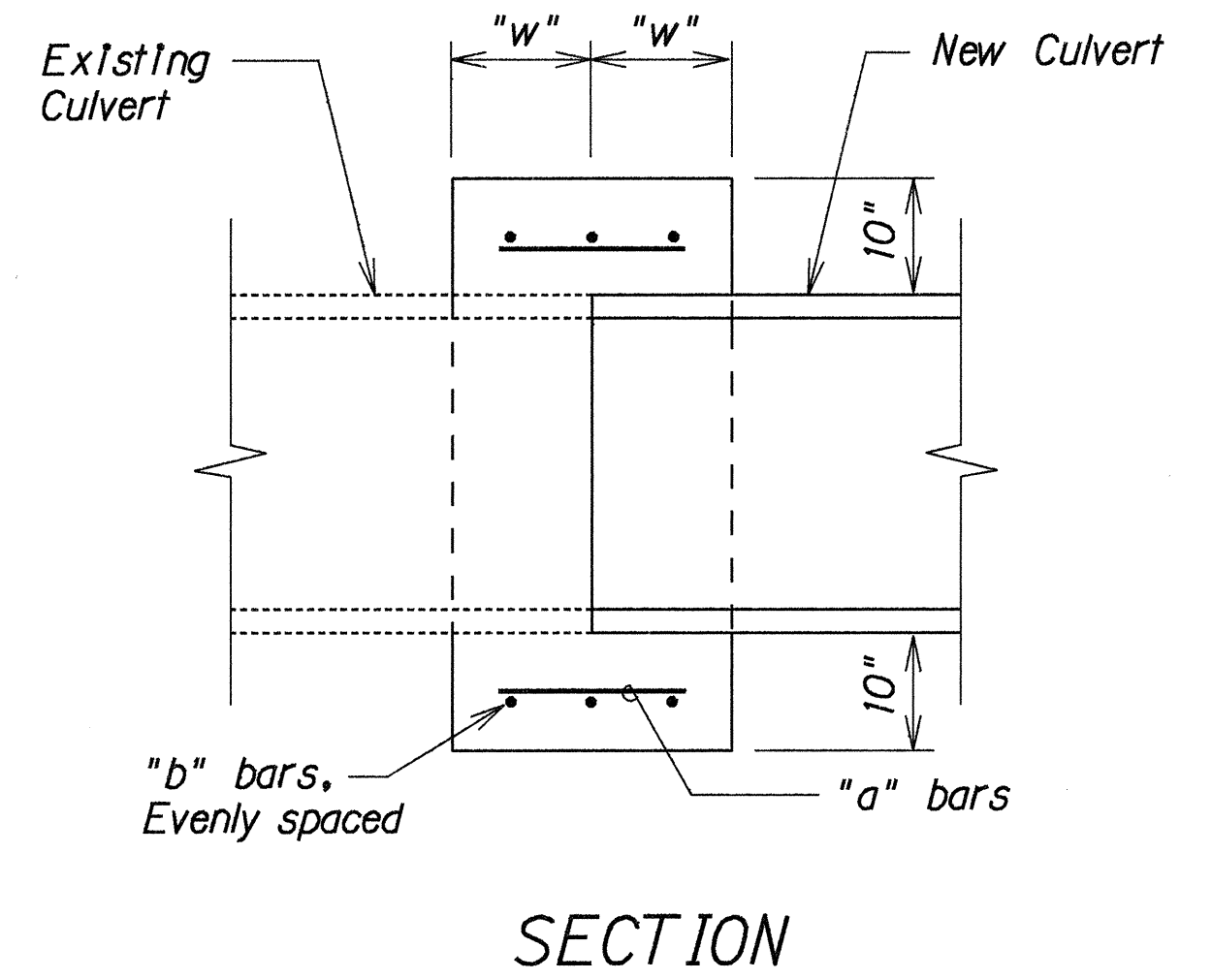
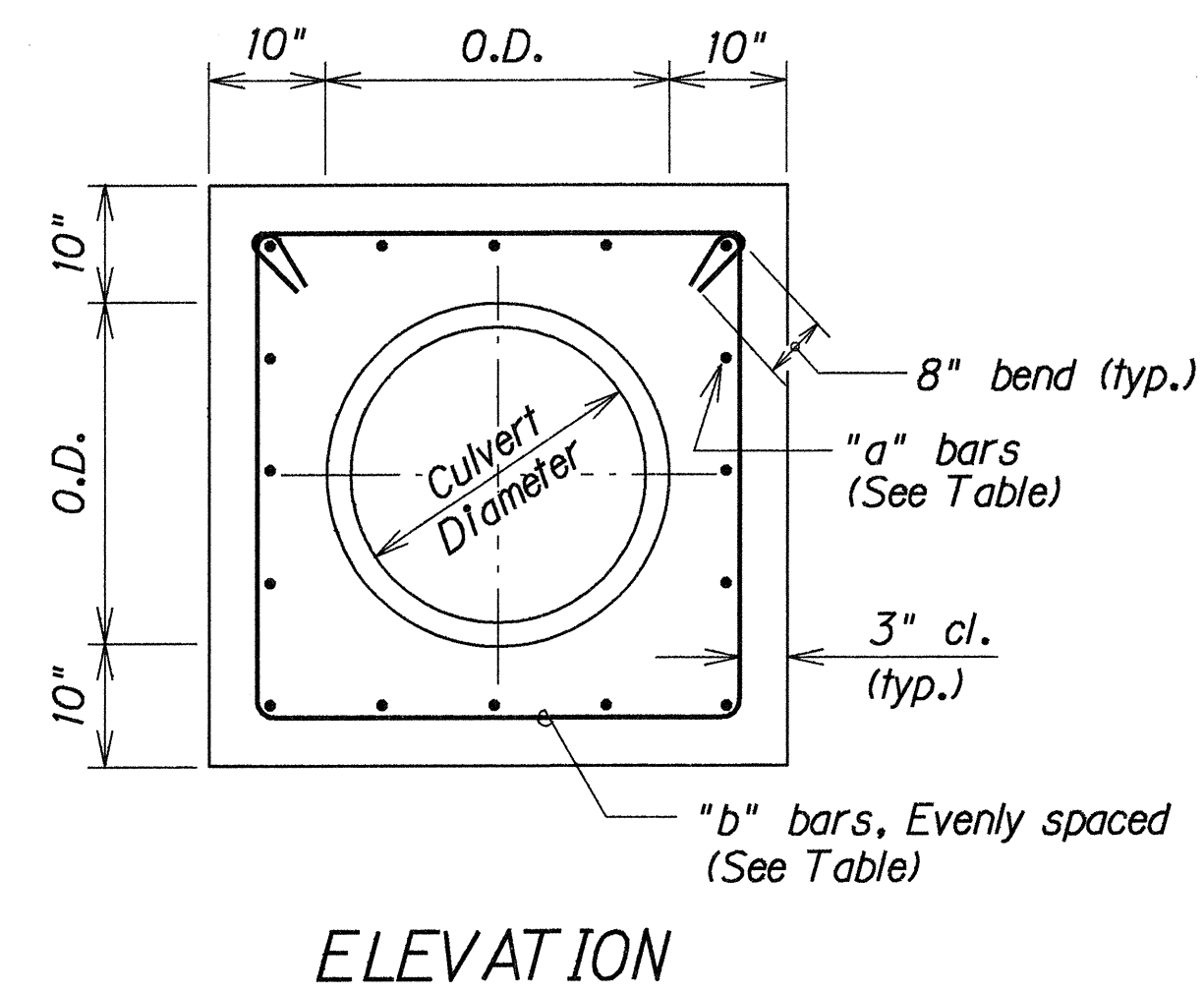


FED. ROAD DIST. NO.	STATE	FED. AID PROJ. NO.	FISCAL YEAR	SHEET NO.	TOTAL SHEETS
HAWAII	HAW.	STP-037-K(21)	1998	8	40



DETAIL OF 72" CORRUGATED STEEL PIPE LINING
Sta. 23+ 46



Culvert Diameter	"a" bars	"b" bars	"w"
18" to 30"	#4 @ 9"	3- #4	12"
36" to 48"	#5 @ 9"	4- #4	15"

Note: Reinforcing Steel for Concrete Collar shall conform to the requirements of ASTM 615-Grade 60.

TYPICAL DETAILS OF REINFORCED CONCRETE COLLAR

ORIGINAL PLAN	DATE
SURVEY PLOTTED BY	3/1/98
DRAWN BY	
DESIGNED BY	
CHECKED BY	
APPROVED BY	

STATE OF HAWAII
DEPARTMENT OF TRANSPORTATION
HIGHWAYS DIVISION

DRAINAGE DETAILS

KULA HIGHWAY RESURFACING
Kekaulike Avenue to Lower Kula Road
Fed. Aid Project No. STP-037-K(21)

Scale: As Noted Date: May, 1998

SHEET No. 1 OF 1 SHEETS