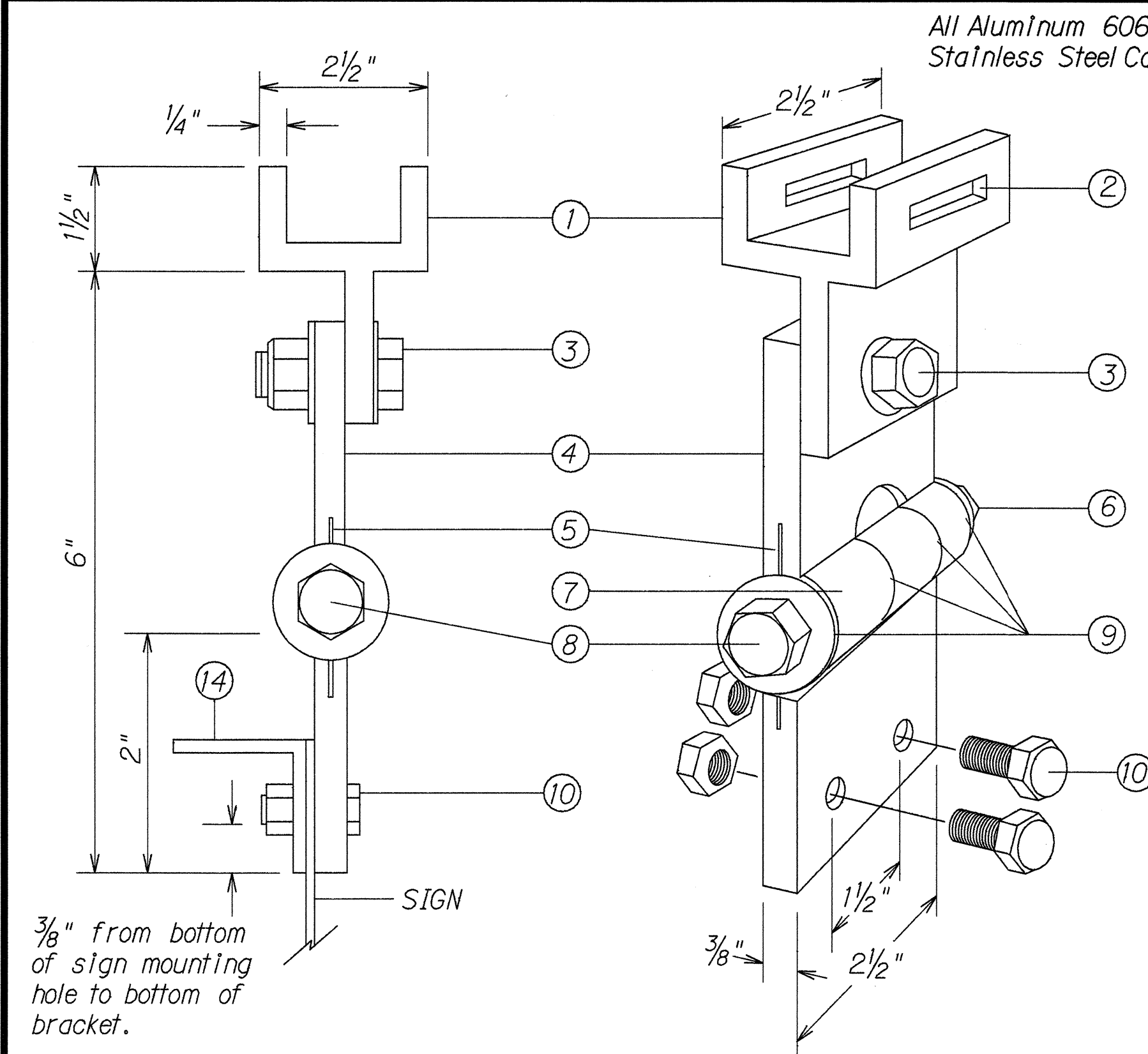


FED. ROAD DIST. NO.	STATE	FED. AID PROJ. NO.	FISCAL YEAR	SHEET NO.	TOTAL SHEETS
HAWAII	HAW.	STP-037-1(20)	1996	7	8

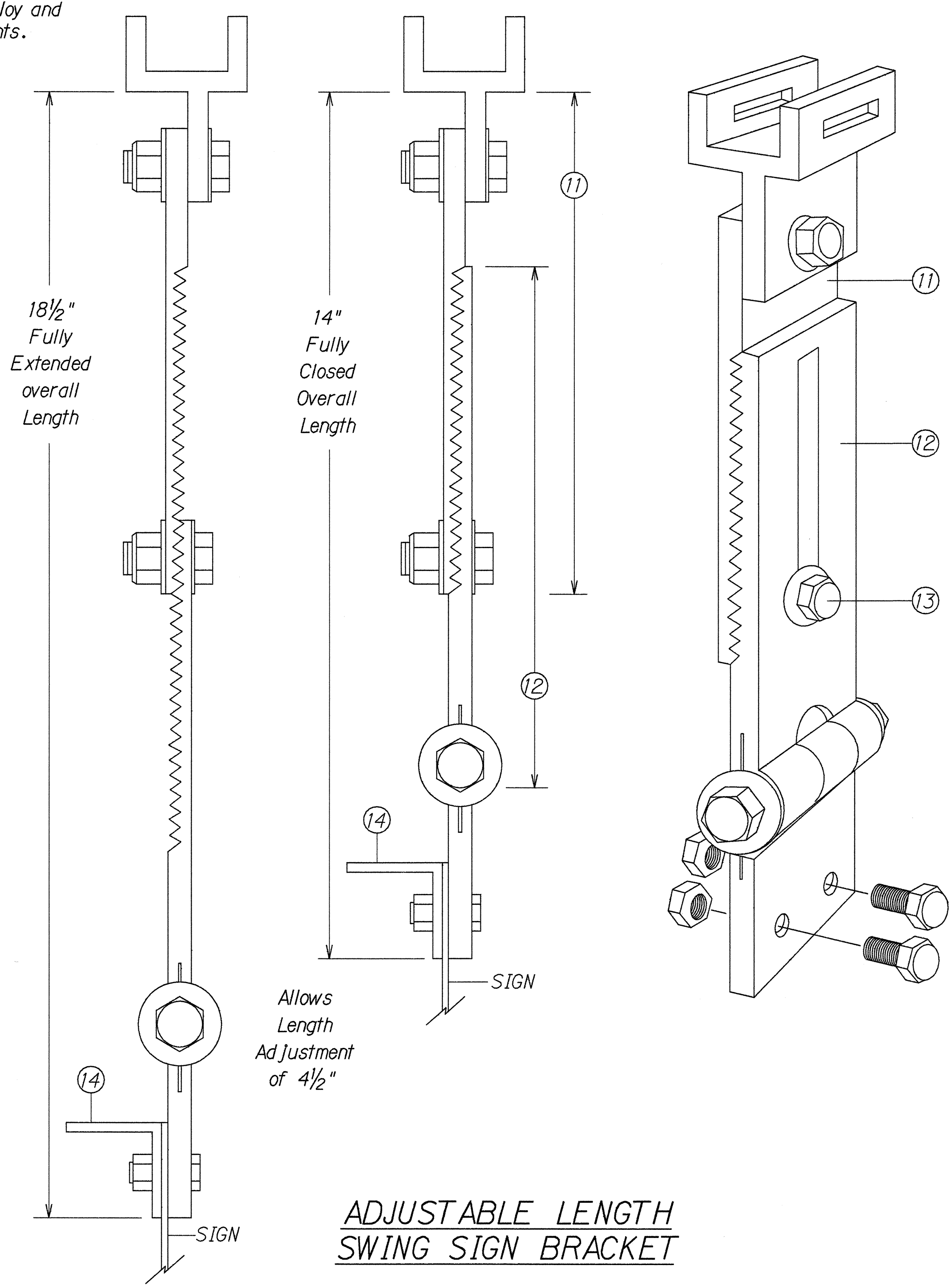


**FIXED LENGTH NON-ADJUSTABLE SWING SIGN BRACKET**

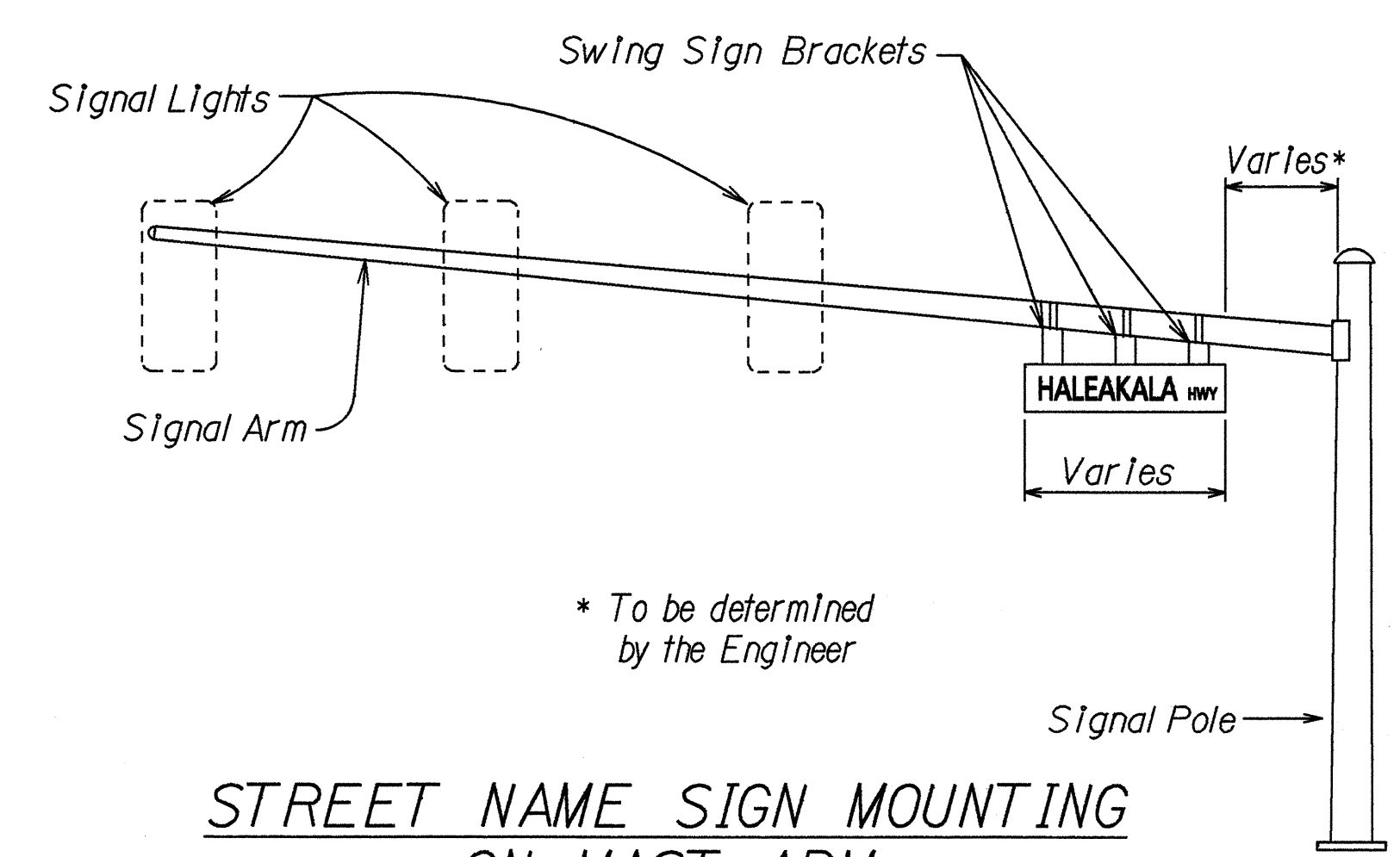
- ① Pivotal Upper Bracket
- ② 1 5/8" x 1/4" Slot for double strapping to electrolier mast arm. (M2G-34S(HD) .030" x 3/4" Heavy Duty Stainless Steel Strap with M2G-34B(HD) Buckle recommended.)
- ③ 1/2" - 13 x 1 1/2" Stainless Steel Hex Head Bolt with Stainless Steel Hex Lock Nut and 1/16" Stainless Steel Washer (both sides). Allows upper bracket to pivot and align with electrolier mast arm.
- ④ 6" Overall drop with Fixed Length Sign Bracket
- ⑤ Stainless Steel Dampener Spring (Removable)
- ⑥ Stainless Steel Hex Lock Nut with 1/16" Stainless Steel Washer
- ⑦ 1" O.D. Axle Housing
- ⑧ 1/2" - 13 x 4" Stainless Steel Hex Head Bolt with 1/16" Stainless Steel Washer
- ⑨ O111te Bushing
- ⑩ Sign Mounting Sets, consisting of two each 5/16" - 18 x 1" Stainless Steel Hex Head Bolt with Stainless Steel Hex Lock Nut. Two holes on 1 1/2" centers provide positive lock sign mounting to bracket.
- ⑪ 8 1/4" overall length Upper Adjustable Sign Bracket section
- ⑫ 9" overall length Lower Adjustable Sign Bracket section, including Axle Housing (8" overall length to top of Axle Housing)
- ⑬ 1/2" - 13 x 1 1/2" Stainless Steel Hex Bolt with Stainless Steel Hex Lock Nut and 1/16" Stainless Steel Washers (both sides). Loosen lock nut, adjust bracket teeth to level sign.
- ⑭ 1 1/4" x 1 1/4" x 1/8" Aluminum Angle

Note: Dimensions may vary slightly.

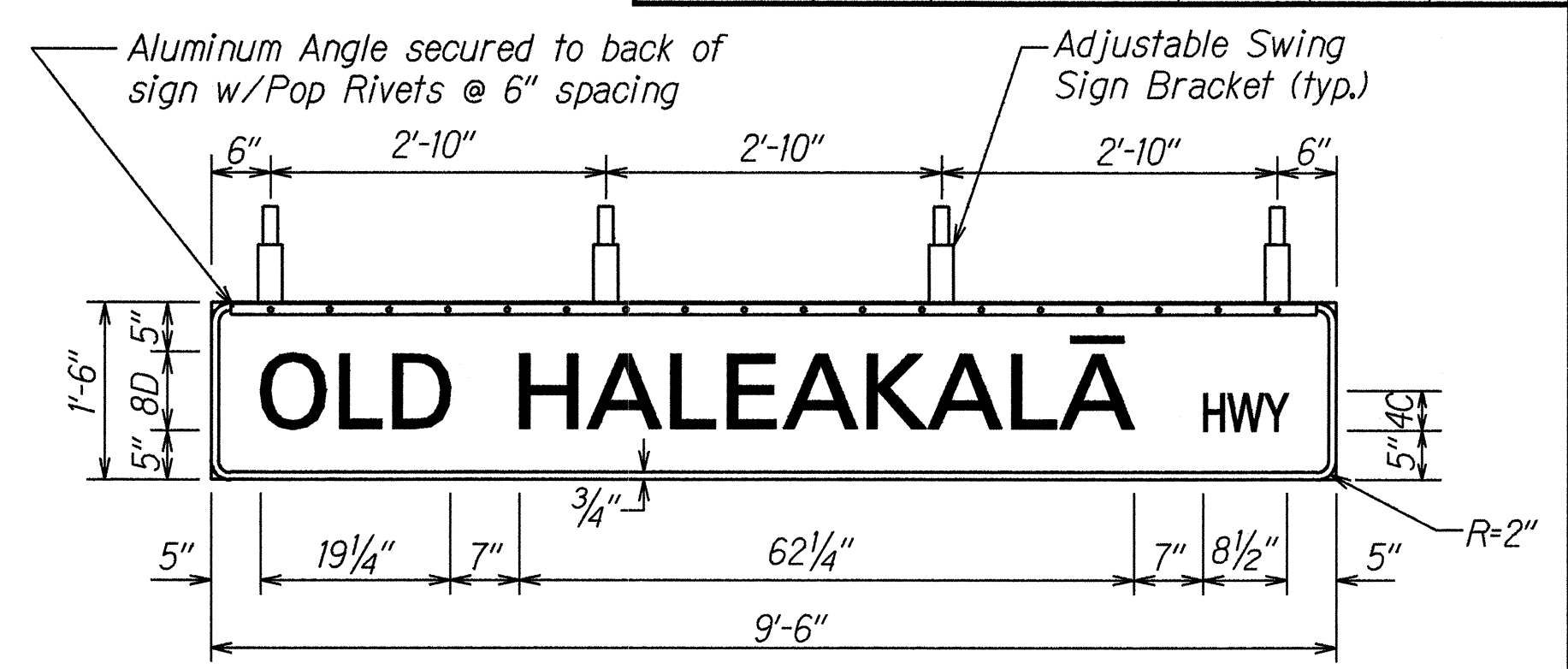
All Aluminum 6061T6 Alloy and Stainless Steel Components.



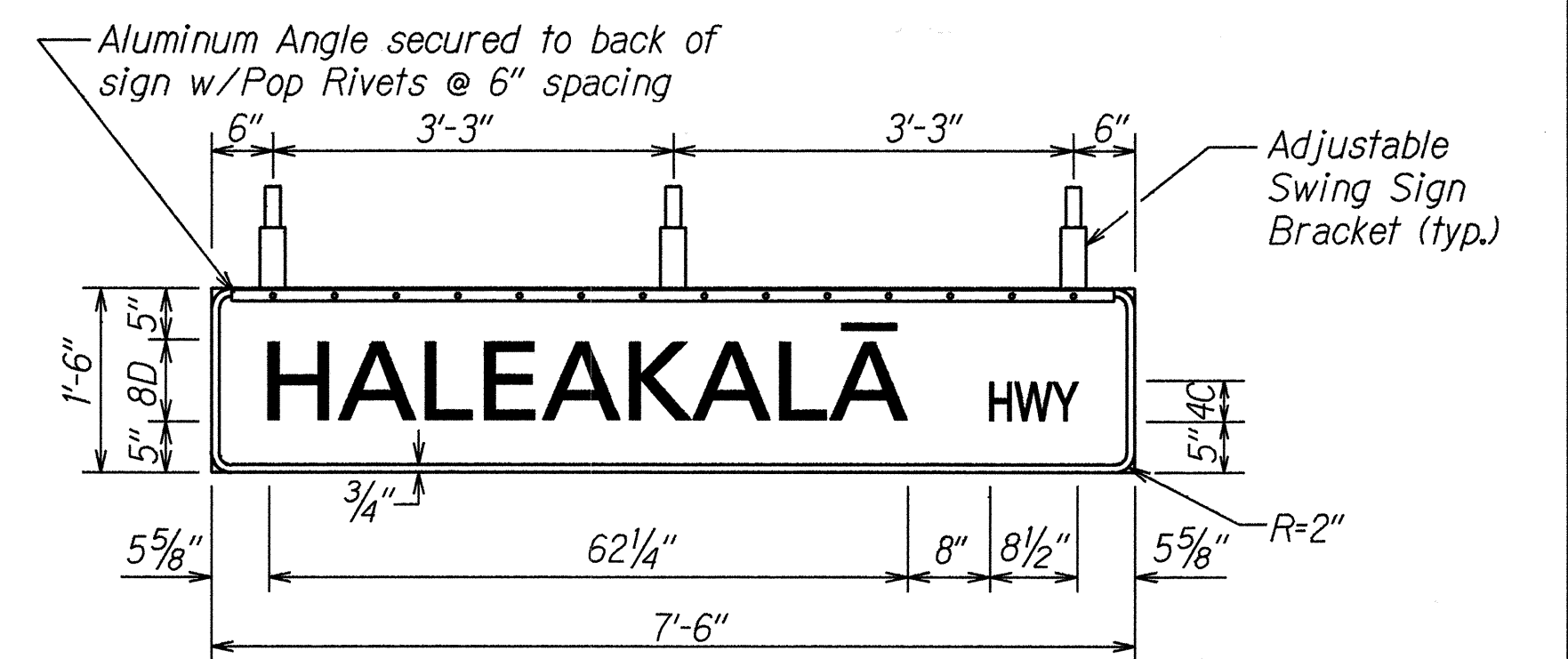
**ADJUSTABLE LENGTH SWING SIGN BRACKET**



**STREET NAME SIGN MOUNTING ON MAST ARM**



**D3-1 (Rear View)**



**D3-2 (Rear View)**

**STREET NAME SIGN DETAIL**

**STREET NAME (D3) SIGN NOTES:**

- Provide the same message on the front and back side of the sign. Payment will not be made separately shall be considered as one unit.
- Colors:  
Legend - White (Reflectorized)  
Background - Green (Reflectorized)
- All panels shall be reflectorized with Type III or IV retroreflective sheeting (High Intensity or High Performance Grade).
- All signs shall conform to section 621 of the standard Specifications and the latest editions and amendments of the following FHWA publications:
  - "Manual on Uniform Traffic Control Devices for Streets and Highways" (MUTCD)
  - "Standard Highway Signs"
  - "Standard Alphabets for Highway Signs"
- Borders and messages shall conform to details as shown on the plans and as specified in the MUTCD.
- Sign mounting brackets, fixtures, fasteners and all necessary hardware, and equipment, tools, labor, materials and other incidental for installation, will not be paid for separately but shall be considered incidental to street name sign installation.
- Install Street Name Signs on Traffic Signal Mast Arm.
- The two diacritical marks; the glottal stop, a break shown by the apostrophe (') and the macron (ˉ), which serves two functions, used on all long vowels, and on one-syllable words and particles that are always stressed, shall be installed on the new Street Name Signs in accordance with the book entitled, "Hawaiian Street Names", The Hawaiian Dictionary and History of O'ahu Street Names.

DATE	5/19/95
SURVEY PLOTTED BY	
DRAWN BY	B. Hill
NOTED BY	C. Hill
CHECKED BY	
ORIGINAL PLAN	
NOTE BOOK	
QUANTITIES BY	
CHECKED BY	

STATE OF HAWAII  
DEPARTMENT OF TRANSPORTATION  
HIGHWAYS DIVISION

**SWING SIGN BRACKET DETAIL**  
  
HALEAKALA HIGHWAY  
Traffic Signals at Kula Junction  
Fed. Aid Project No. STP-037-1(20)  
Not to Scale  
Date: June, 1995

SHEET No. 1 OF 1 SHEETS