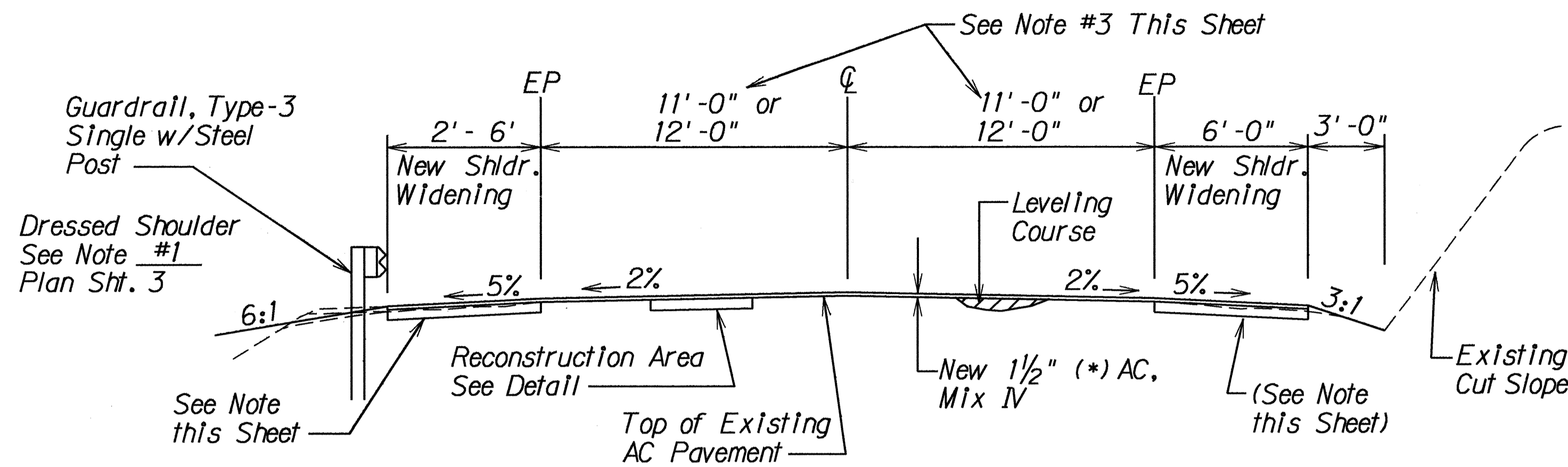


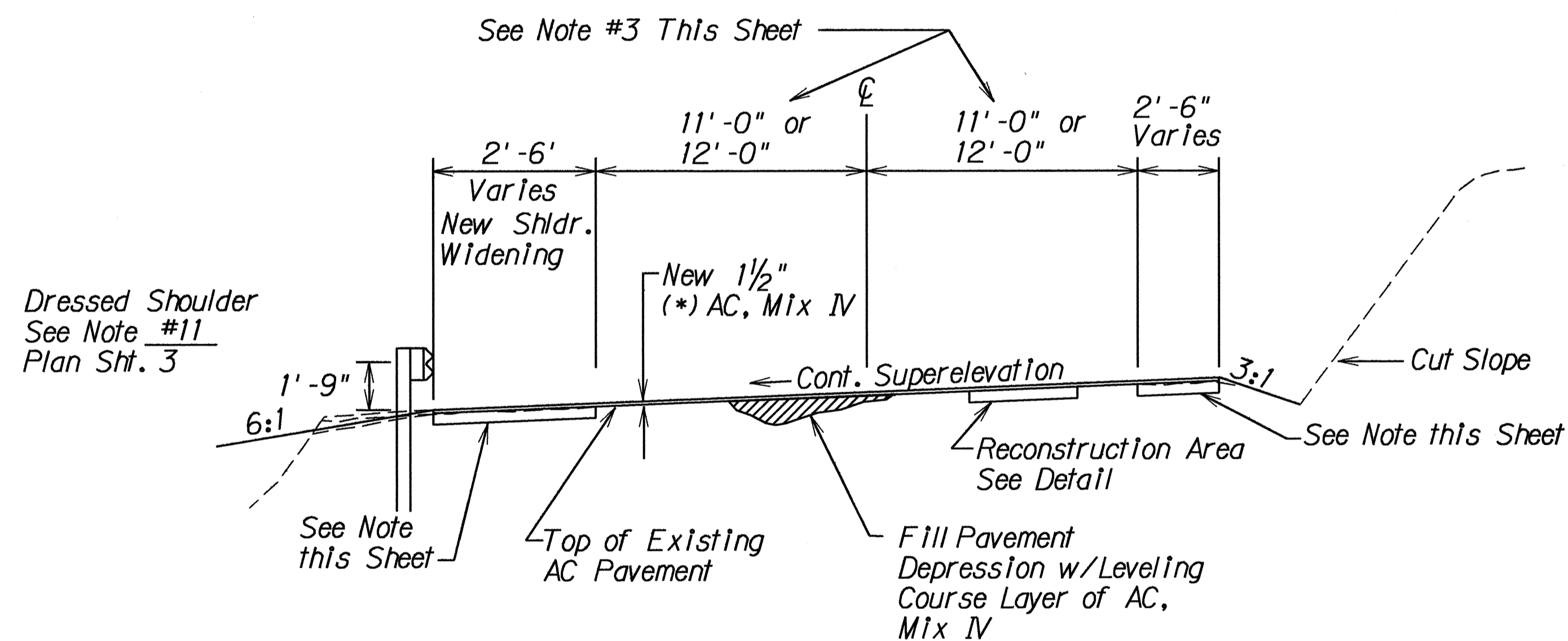
FED. ROAD DIST. NO.	STATE	FED. AID PROJ. NO.	FISCAL YEAR	SHEET NO.	TOTAL SHEETS
HAWAII	HAW.	STP-037-1(18)	1993	ADD. 4	35



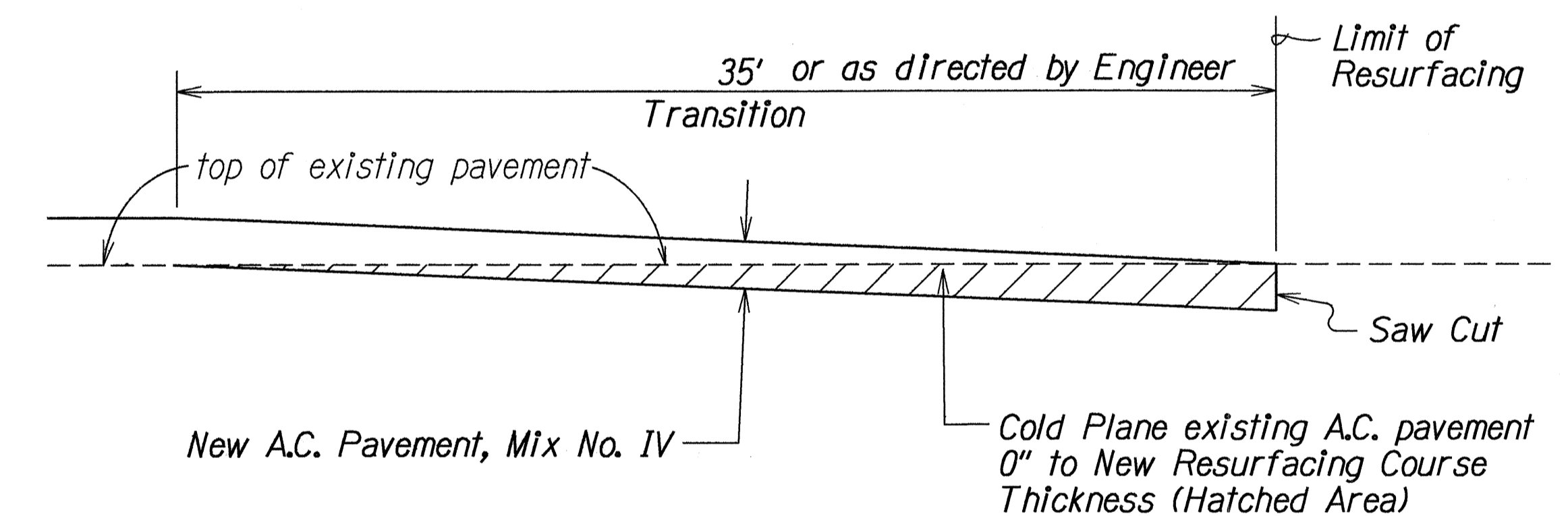
**TYPICAL SECTION ON TANGENTS**  
Scale: 1/4" = 1'-0"

**GENERAL NOTES**

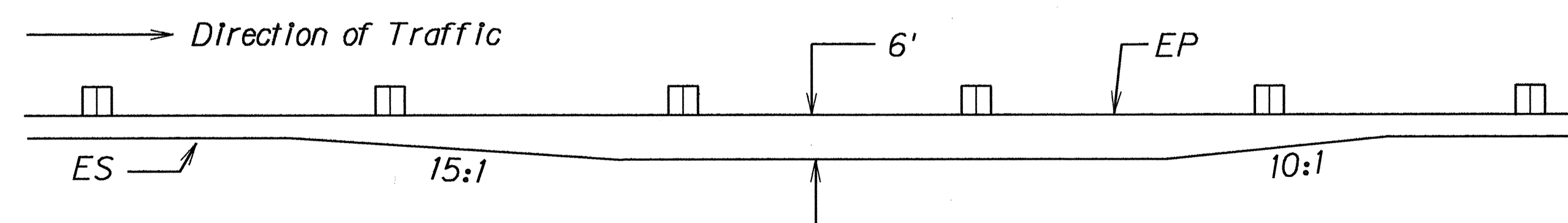
- (\*) -In general, the overlay thickness is 1 1/2" AC, Mix IV over the existing and/or reconstructed pavement. At Sta. 0+34± to Sta. 144+75± and Sta. 295+00± to Sta. 325+00±, the overlay thickness shall consist of 2" AC, Mix IV over 1 1/2" leveling course. See Plan Sheet 5 for cold planing and resurfacing over structures.
- The total thickness of the paved shoulder is 6 1/2". Where overlay thickness is 1 1/2", ACB thickness = 5". Where overlay thickness is 3 1/2", ACB thickness is 3".
- Lane Widths  
Sta. 0+34± to Sta. 144+45 = 11'  
Sta. 277+00 to Sta. 337+15.26 = 12'



**TYPICAL SECTION ON CURVES**  
Scale: 1/4" = 1'-0"



**COLD PLANED TRANSITION TO EXISTING A.C. PAVEMENT**  
Not To Scale



**TYPICAL SHOULDER TRANSITION DETAIL**  
Scale: 1/16" = 1'-0"

SURVEY PLOTTED BY	DATE
DRAWN BY	
TRACED BY	
NOTE BOOK	
QUANTITIES BY	
CHECKED BY	4-9-93
NO. DIMENSIONS	

6-3-93	Revised Typical Sections and General Notes
DATE	REVISION

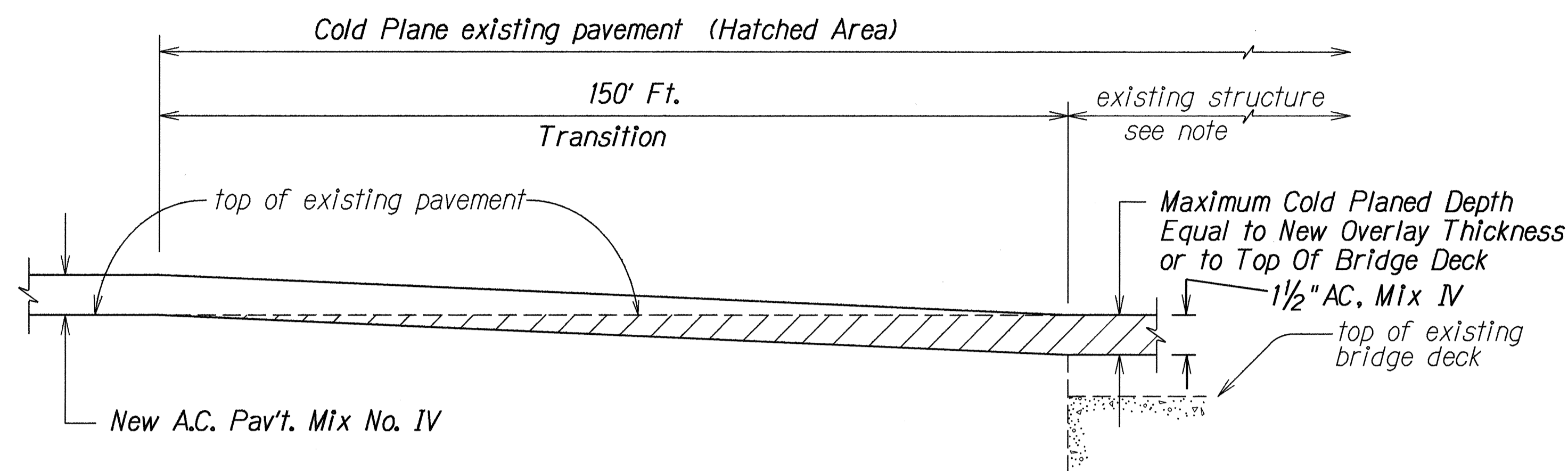
STATE OF HAWAII  
DEPARTMENT OF TRANSPORTATION  
HIGHWAYS DIVISION

**TYPICAL SECTIONS AND DETAILS**

KULA HIGHWAY RESURFACING  
Kekaulike to Kula Sanatorium  
Kula Junction Towards Lower Kula Road  
Fed. Aid. Project No. STP-037-1(18)

Scale: As Shown Date: April, 1993  
SHEET No. 1 OF 2 SHEETS

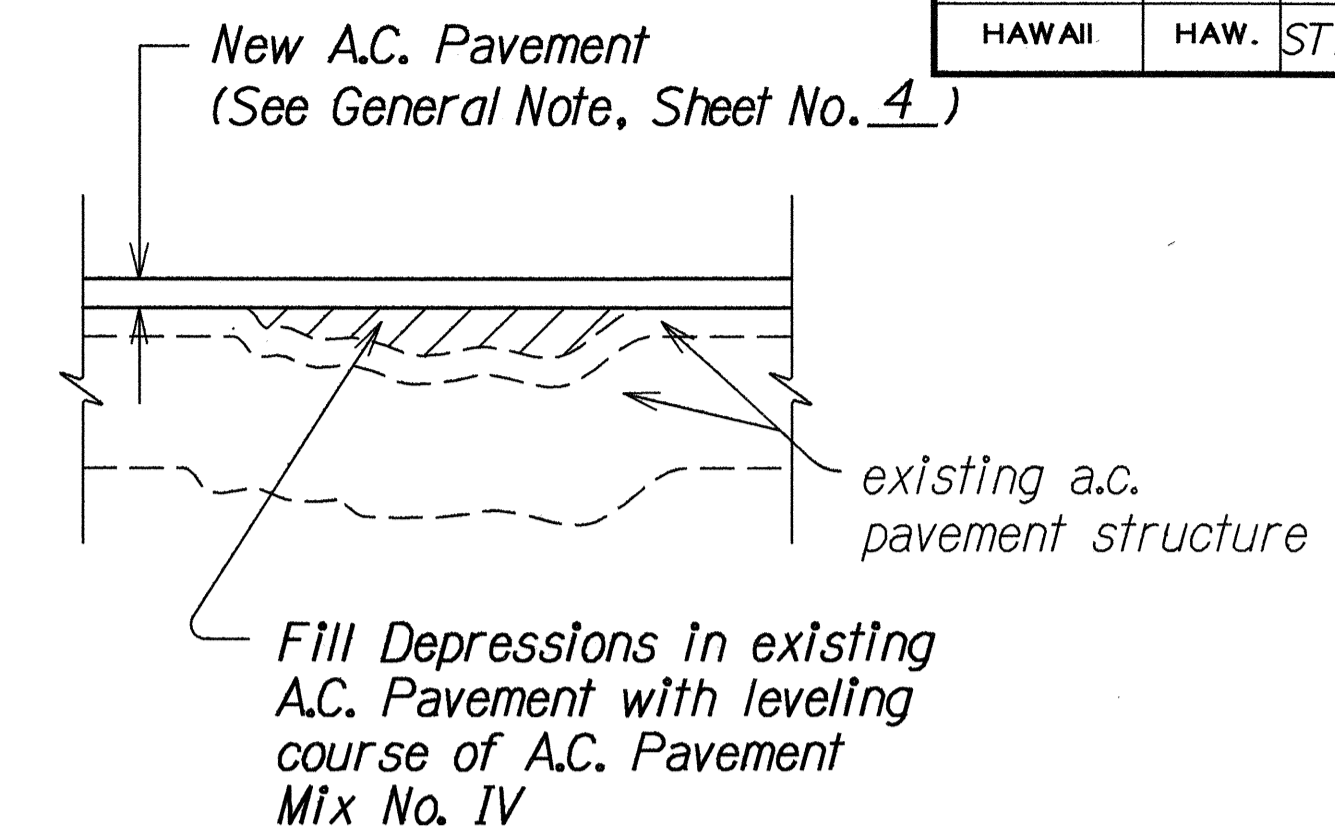
FED. ROAD DIST. NO.	STATE	FED. AID PROJ. NO.	FISCAL YEAR	SHEET NO.	TOTAL SHEETS
HAWAII	HAW.	STP-037-1(18)	1993	ADD. 5	35



Note: In cold planing the pavement over the structure, the Contractor shall exercise care not to damage any portion of the structure, especially the slab, joints, drainage pipes or reinforcement. Any damage to the structure during the cold planing operations shall be repaired by the Contractor at his expense. Repair work shall be directed by the Engineer. The Contractor shall verify the thickness of the pavement by taking several measurements throughout the structure.

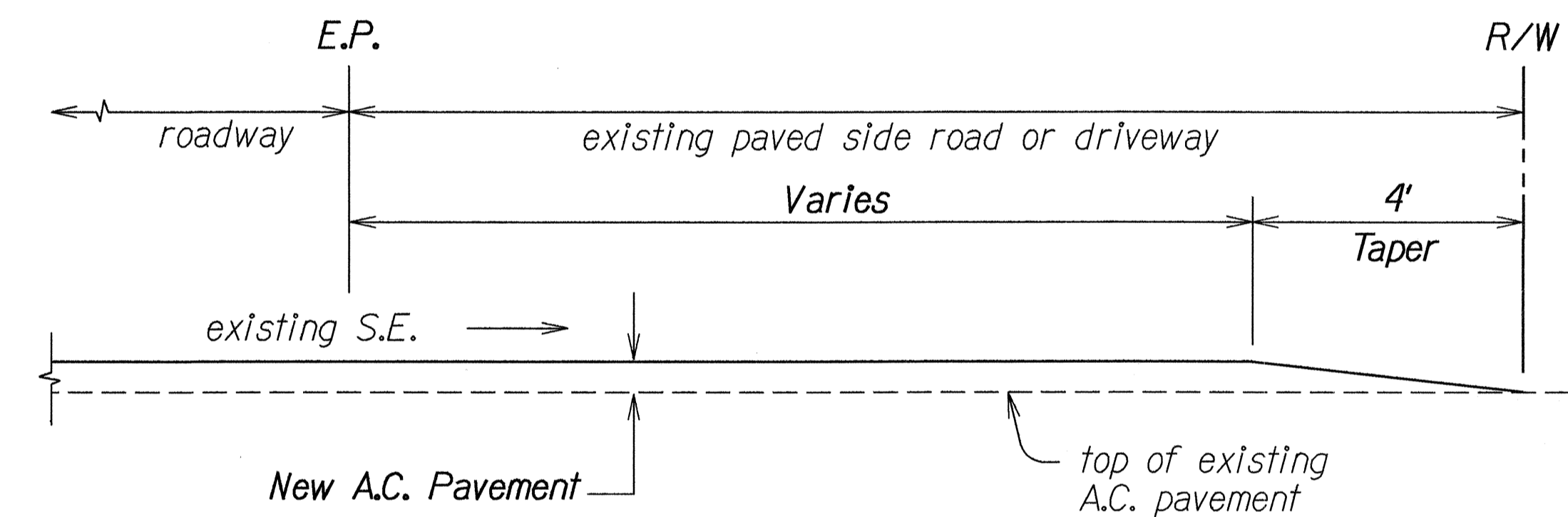
**COLD PLANED TRANSITION AND RESURFACING OVER EXISTING STRUCTURE**

Not to Scale



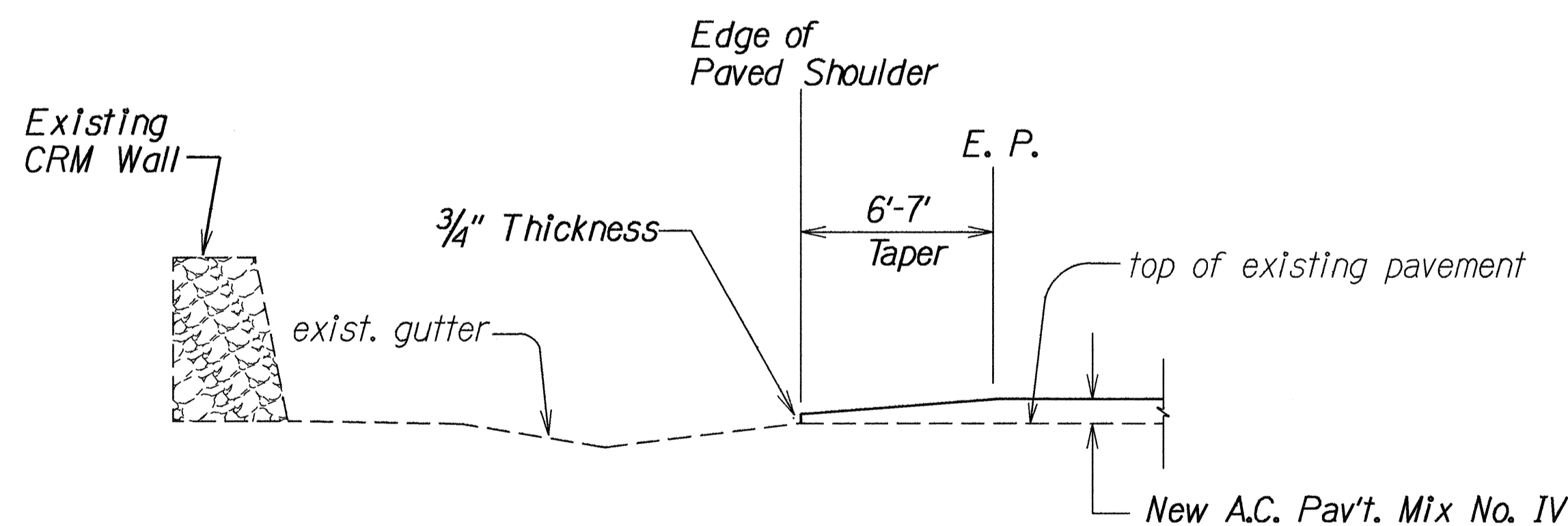
**LEVELING DETAIL**

Not To Scale



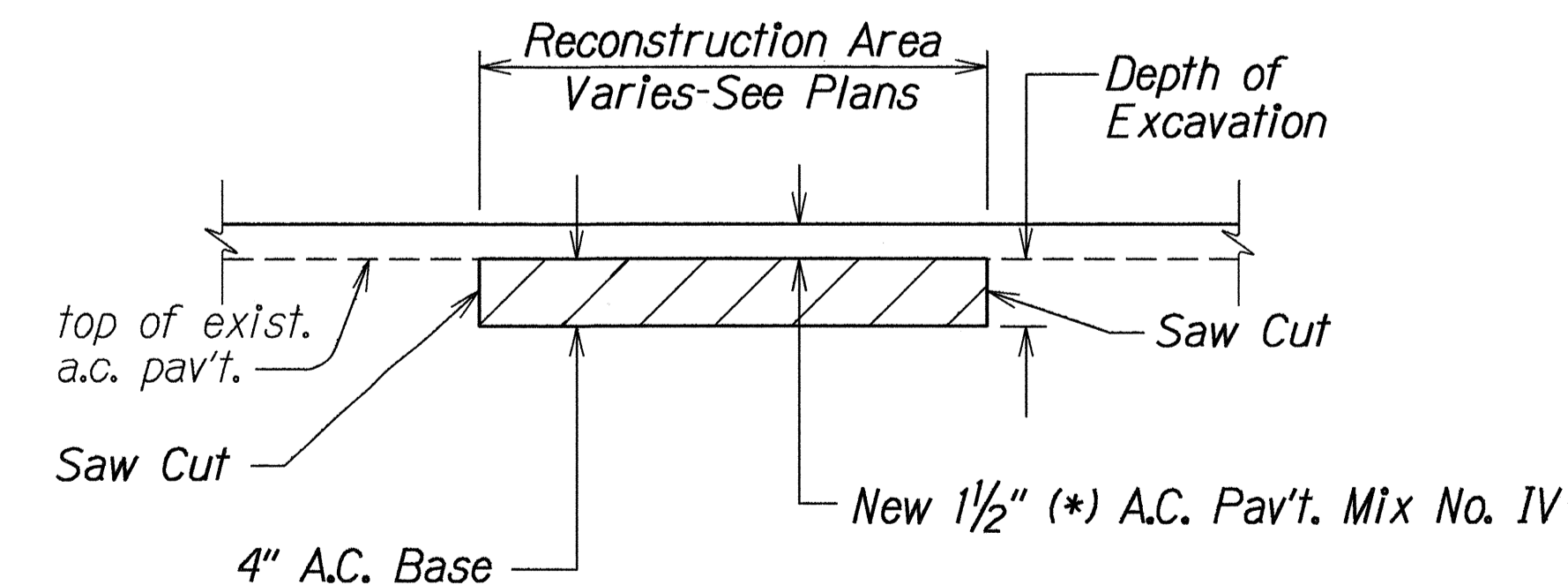
**A. C. RESURFACING AT PAVED SIDEROAD OR PAVED DRIVEWAY DETAIL**

Not To Scale



**RESURFACING AT CONCRETE GUTTER (STA. 19+60 - STA. 15+00 RT.) (STA. 8+80 - STA. 7+20 RT.)**

Not To Scale



**A.C. PAVEMENT RECONSTRUCTION DETAIL**

Not To Scale

SURVEY PLOTTED BY	DATE
DRAWN BY	
TRACED BY	
QUANTITIES BY	
CHECKED BY	4-29-93
ORIGINAL PLAN	
NOTE BOOK	
N. 10/17/2024	

6-3-93	Details Revised
DATE	REVISION
STATE OF HAWAII DEPARTMENT OF TRANSPORTATION HIGHWAYS DIVISION	
<b>TYPICAL SECTIONS AND DETAIL</b>	
KULA HIGHWAY RESURFACING Kekaulike to Kula Sanatorium Kula Junction towards Lower Kula Road Fed. Aid Project No. STP-037-1(18)	
Scale: As Shown	Date: March, 1993
SHEET No. 2 OF 2 SHEETS	