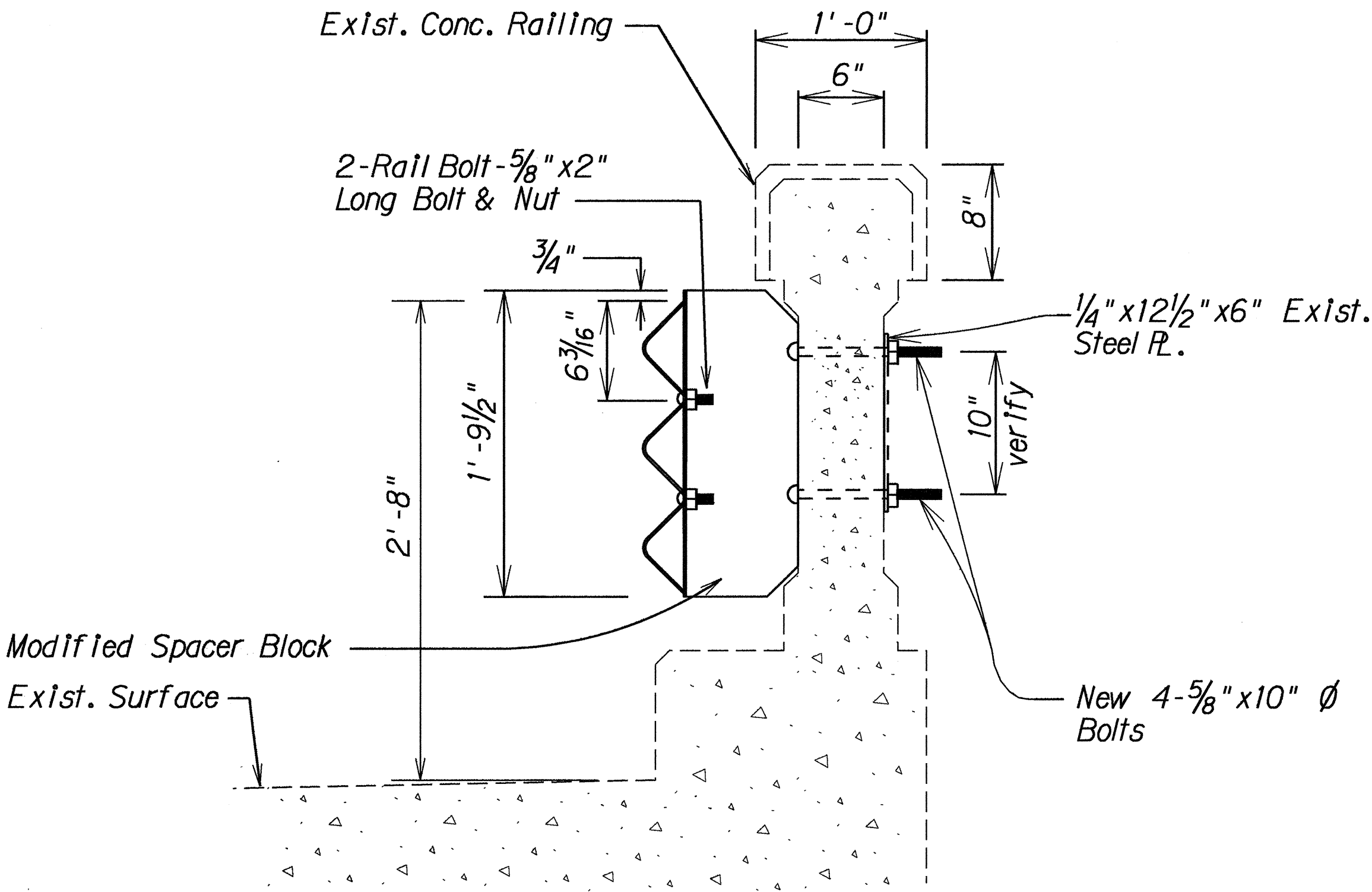
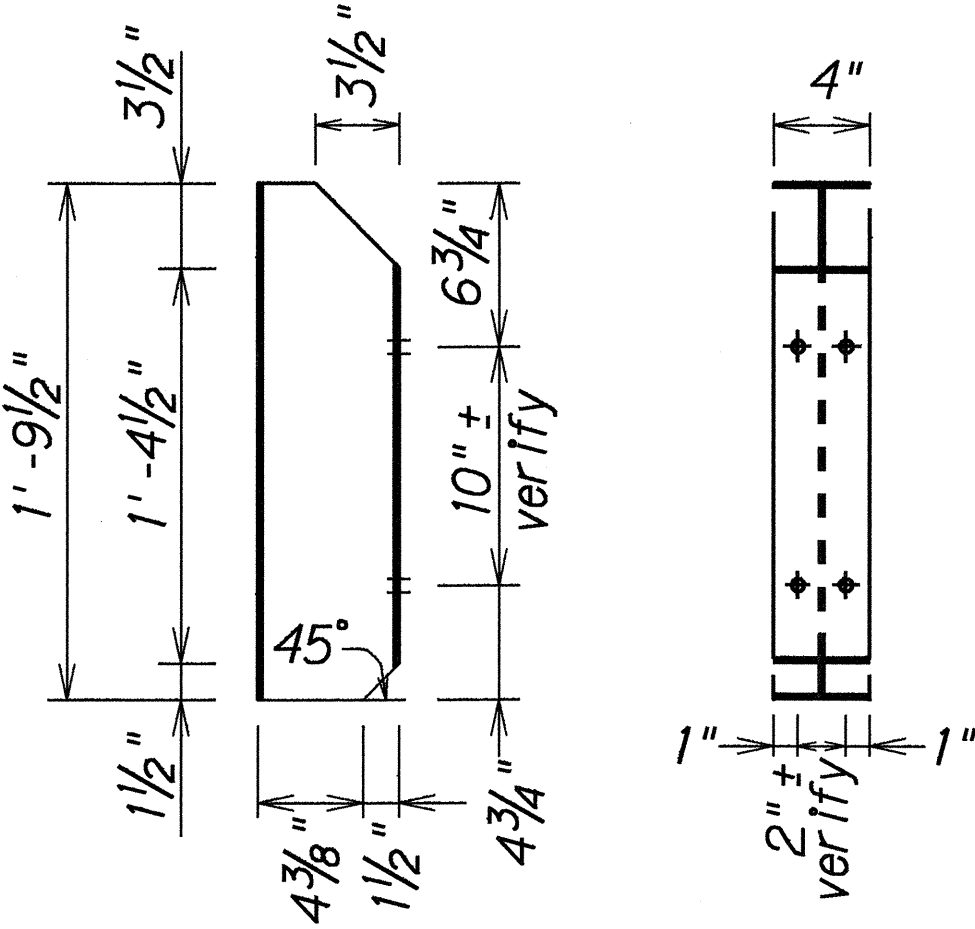


FED. ROAD DIST. NO.	STATE	FED. AID PROJ. NO.	FISCAL YEAR	SHEET NO.	TOTAL SHEETS
HAWAII	HAW.	STP-037-1(18)	1993	ADD. 19	35

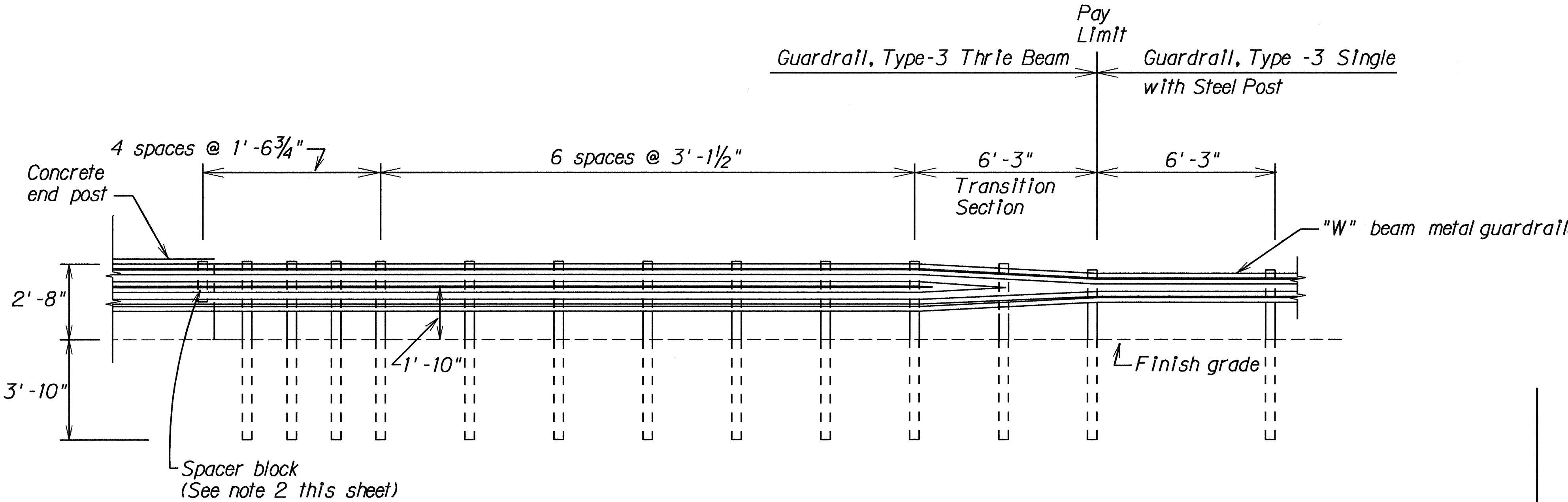


**TYPICAL SECTION - THRIE BEAM  
GUARDRAIL MOUNTED TO BRIDGE RAIL**  
Scale : 1 1/2" = 1' - 0"

- NOTES:**
1. Contractor to verify locations, dimensions, and size of existing holes on bridge rail prior to fabrication of spacer block. Drilling of additional holes on the bridge rail will not be allowed except at the terminals at end posts. Submit shop drawings to Engineer for approval prior to fabrication of spacer blocks.
  2. Contractor shall verify dimension, radius, etc. of existing end posts. Tapered metal spacer block shall be made of 1/4" steel plate and shall be galvanized according to specifications. Submit shop drawings to Engineer for approval.
  3. Payment for modified spacer block and thrie beam mounted on to bridge rail will be paid for under Guardrail, Type-3 Thrie Beam.
  4. Existing posts within the thrie beam sections shall be replaced with 6'-6" posts.



**MODIFIED THRIE BEAM  
SPACER BLOCK AT BRIDGE RAIL**  
Scale: 1 1/2" = 1' - 0"



**GUARDRAIL POST SPACING DETAIL AT BRIDGE APPROACHES**  
Scale: 3/8" = 1' - 0"

SURVEY PLOTTED BY	DATE
DRAWN BY	
CHECKED BY	
NOTES	
QUANTITIES BY	
CHECKED BY	
DATE	6-2-93

6/2/93	Added Post at Midpoint of Transition Beam
DATE	REVISION

STATE OF HAWAII  
DEPARTMENT OF TRANSPORTATION  
HIGHWAYS DIVISION  
**GUARDRAIL DETAILS**  
KULA HIGHWAY RESURFACING  
Kekaulike to Kula Sanatorium  
Kula Junction towards Lower Kula Road  
Fed. Aid Project No. STP-037-1(18)

Scale: As Shown  
Date: May, 1993  
SHEET No. 1 OF 1 SHEETS