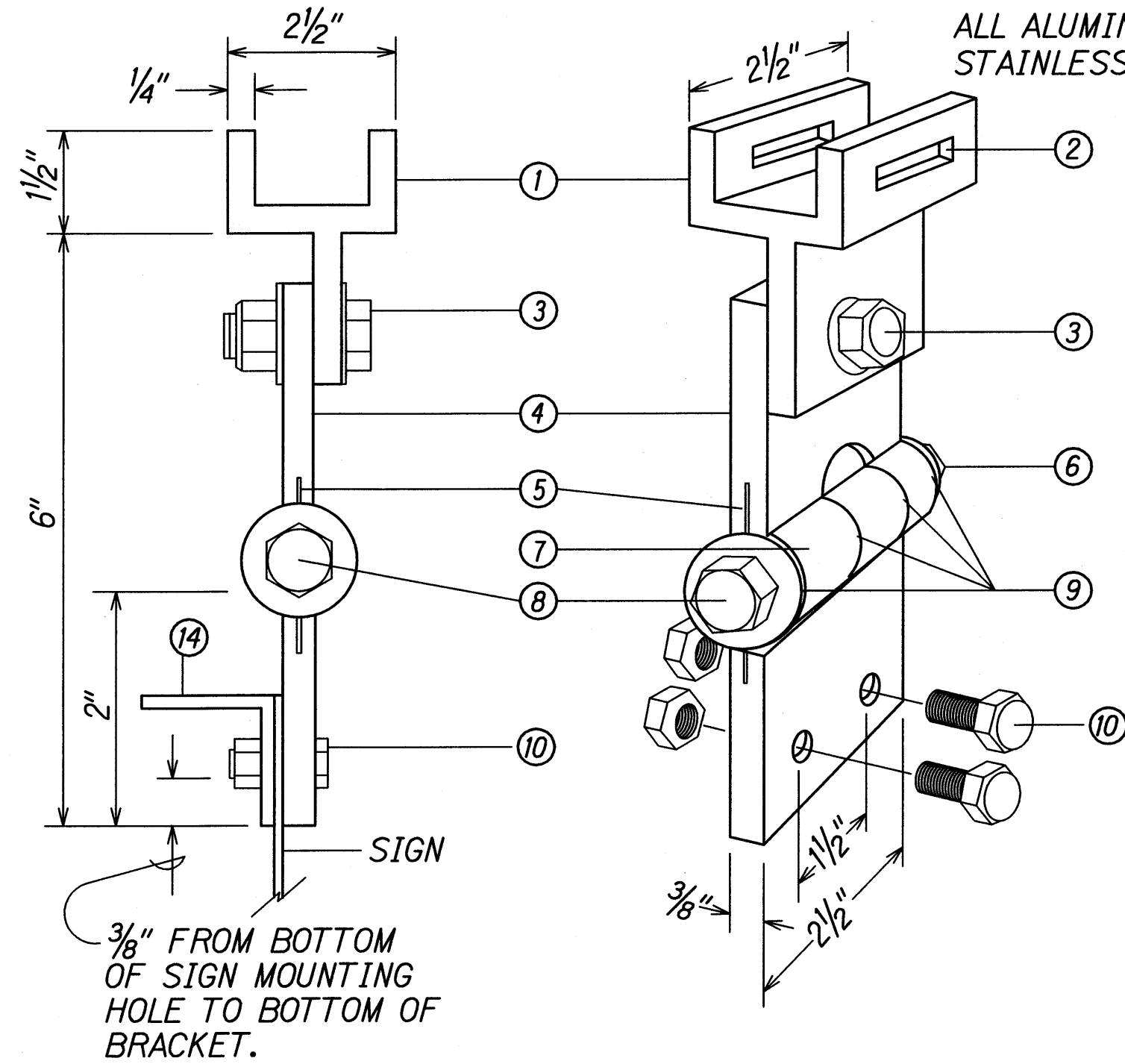
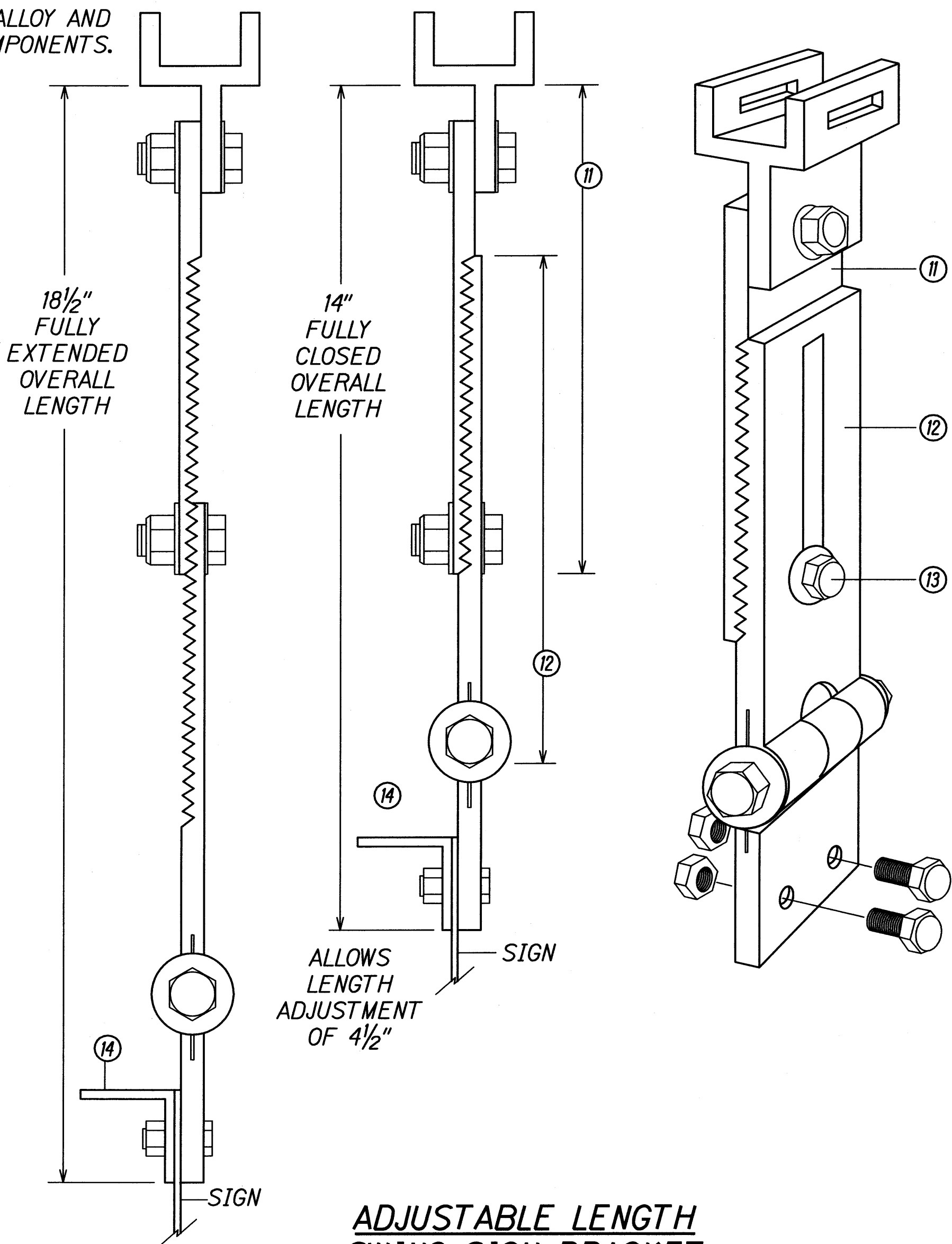


FED. ROAD DIST. NO.	STATE	PROJ. NO.	FISCAL YEAR	SHEET NO.	TOTAL SHEETS
HAWAII	HAW.	HWY-M-01-08	2010	10	17



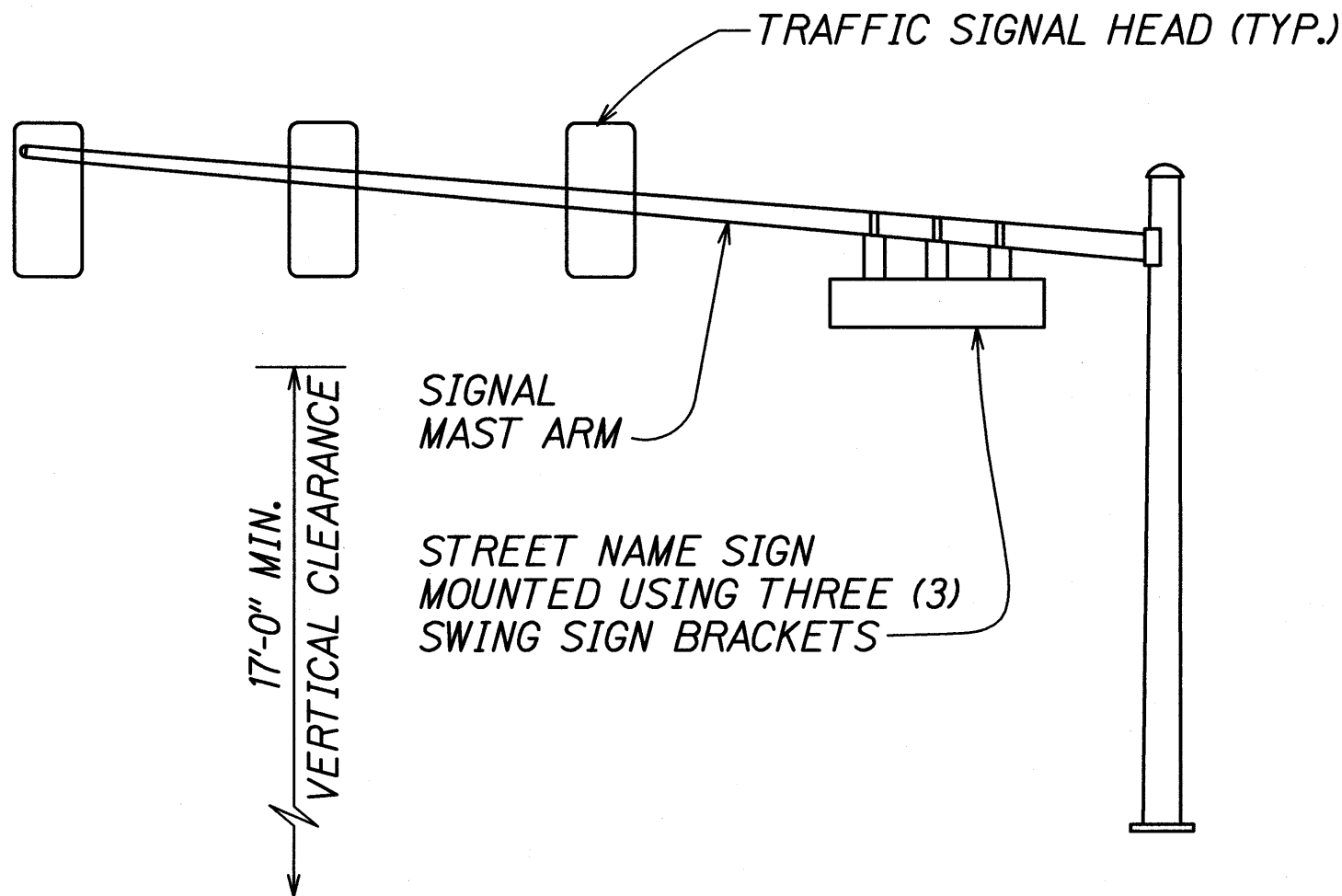
**FIXED LENGTH NON-ADJUSTABLE  
SWING SIGN BRACKET**

- ① PIVOTAL UPPER BRACKET
- ② 1 5/8" X 1/4" SLOT FOR DOUBLE STRAPPING TO ELECTROLIER MAST ARM. (M2G-34S(HD) .030" X 3/4" HEAVY DUTY STAINLESS STEEL STRAP WITH M2G-34B(HD) BUCKLE RECOMMENDED.)
- ③ 1/2" - 13 X 1 1/2" STAINLESS STEEL HEX HEAD BOLT WITH STAINLESS STEEL HEX LOCK NUT AND 1/16" STAINLESS STEEL WASHER (BOTH SIDES). ALLOWS UPPER BRACKET TO PIVOT AND ALIGN WITH ELECTROLIER MAST ARM.
- ④ 6" OVERALL DROP WITH FIXED LENGTH SIGN BRACKET
- ⑤ STAINLESS STEEL DAMPENER SPRING (REMOVABLE)
- ⑥ STAINLESS STEEL HEX LOCK NUT WITH 1/16" STAINLESS STEEL WASHER
- ⑦ 1" O.D. AXLE HOUSING
- ⑧ 1/2" - 13 X 4" STAINLESS STEEL HEX HEAD BOLT WITH 1/16" STAINLESS STEEL WASHER
- ⑨ OILITE BUSHING
- ⑩ SIGN MOUNTING SETS, CONSISTING OF TWO EACH 5/16" - 18 X 1" STAINLESS STEEL HEX HEAD BOLT WITH STAINLESS STEEL HEX LOCK NUT. TWO HOLES ON 1 1/2" CENTERS PROVIDE POSITIVE LOCK SIGN MOUNTING TO BRACKET.
- ⑪ 8 1/4" OVERALL LENGTH UPPER ADJUSTABLE SIGN BRACKET SECTION
- ⑫ 9" OVERALL LENGTH LOWER ADJUSTABLE SIGN BRACKET SECTION, INCLUDING AXLE HOUSING (8" OVERALL LENGTH TO TOP OF AXLE HOUSING)
- ⑬ 1/2" - 13 X 1 1/2" STAINLESS STEEL HEX BOLT WITH STAINLESS STEEL HEX LOCK NUT AND 1/16" STAINLESS STEEL WASHERS (BOTH SIDES). LOOSEN LOCK NUT, ADJUST BRACKET TEETH TO LEVEL SIGN.
- ⑭ 1 1/4" X 1 1/4" X 1/8" ALUMINUM ANGLE

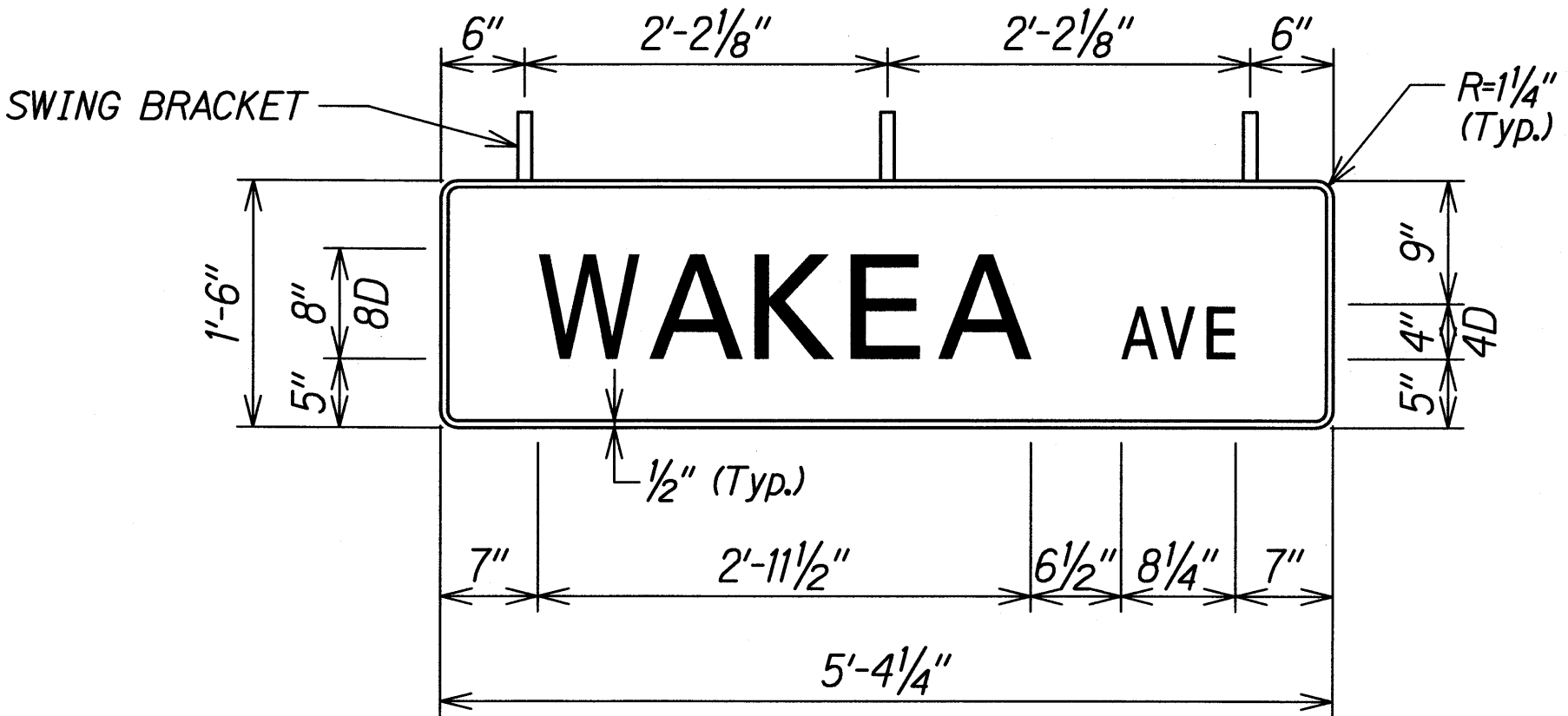


**ADJUSTABLE LENGTH  
SWING SIGN BRACKET**

NOTE: DIMENSIONS MAY VARY SLIGHTLY.



**SIGN MOUNTING  
ON MAST ARM**



**SIGN DETAIL**  
NTS

**NOTE:**

1. SIGN DETAILS SHALL CONFORM TO THE LATEST EDITIONS OF THE FOLLOWING FHWA PUBLICATIONS: "MANUAL ON UNIFORM TRAFFIC CONTROL DEVICES FOR STREETS AND HIGHWAYS", AND "STANDARD HIGHWAY SIGNS", AND AS AMENDED.

SURVEY PLOTTED BY	DATE
DRAWN BY	
CHECKED BY	
QUANTITIES BY	
CHECKED BY	
ORIGINAL PLAN	
NOTE BOOK	
DATE	

THIS WORK WAS PREPARED BY ME OR UNDER MY SUPERVISION.

SIGNATURE: *Dexter S. Eui* DATE: 04/30/12

EXPIRATION DATE OF THE LICENSE

STATE OF HAWAII  
DEPARTMENT OF TRANSPORTATION  
HIGHWAYS DIVISION

**STREET NAME SIGN AND  
SWING SIGN BRACKET DETAIL**

HANA HIGHWAY  
TRAFFIC OPERATIONAL IMPROVEMENTS AT WAKEA AVENUE  
PROJECT NO. HWY-M-01-08

Scale: None Date: May, 2010