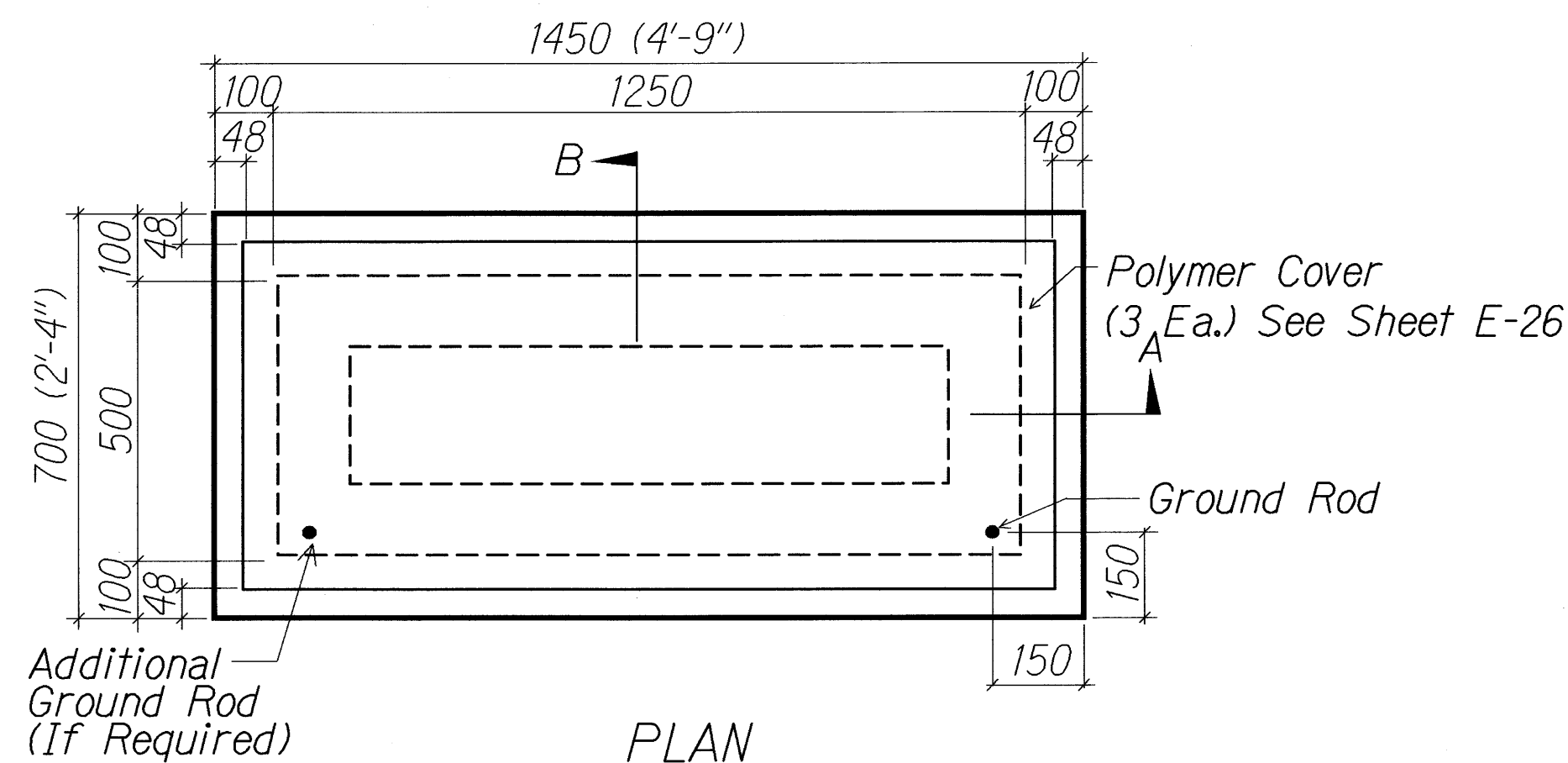
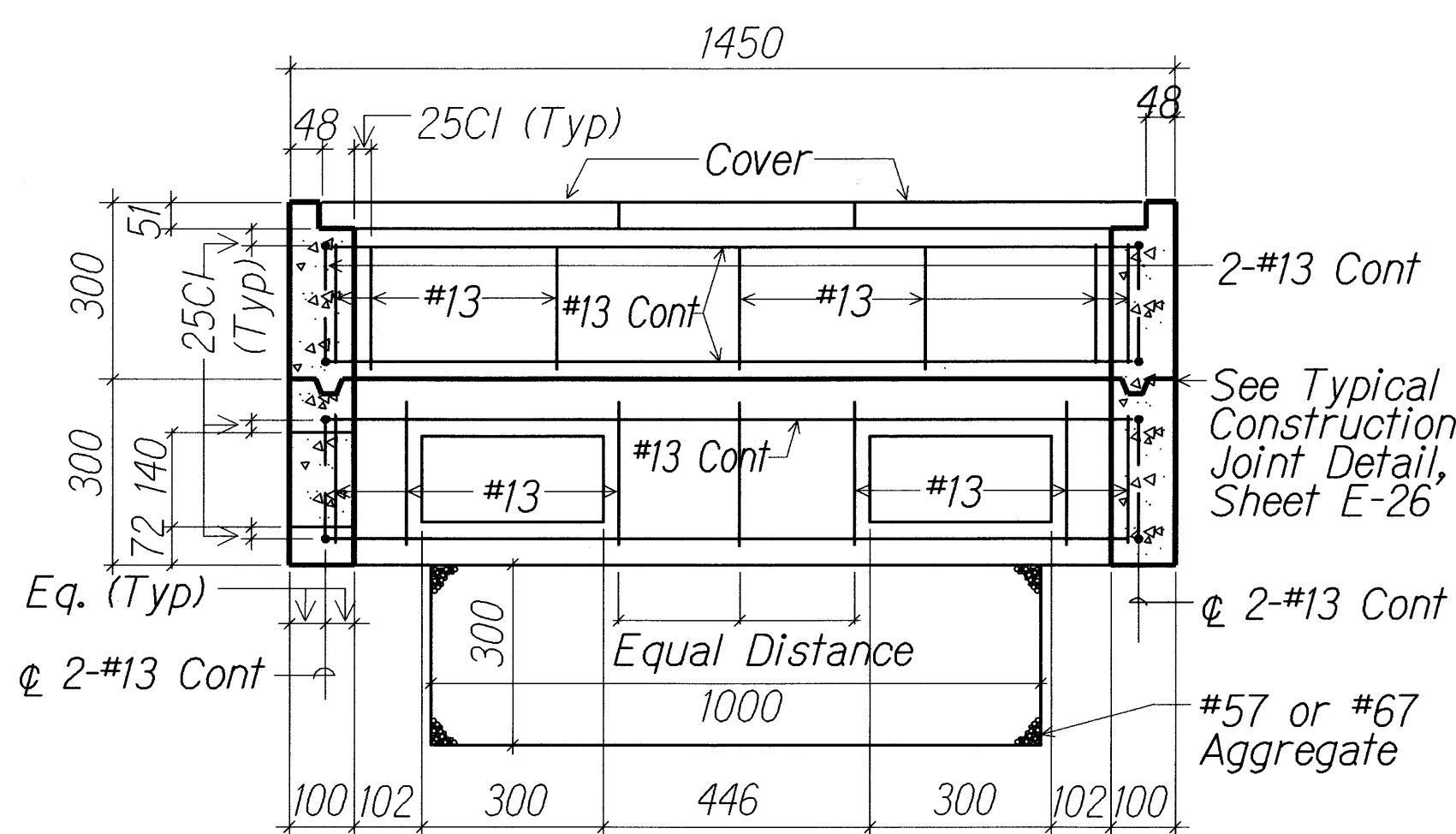


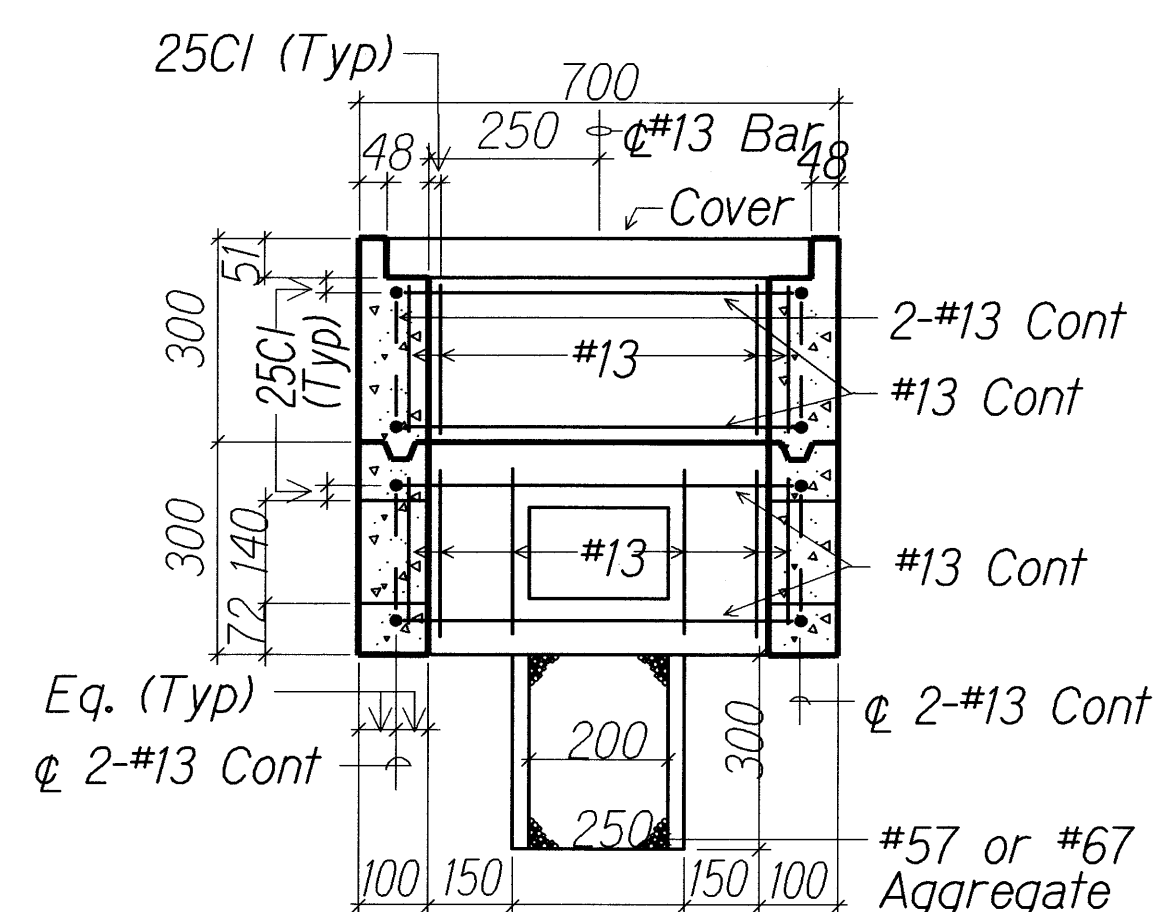
FED. ROAD DIST. NO.	STATE	PROJ. NO.	FISCAL YEAR	SHEET NO.	TOTAL SHEETS
HAWAII	HAW.	HWY-M-01-08	2010	17	17



PLAN



SECTION "A-A"

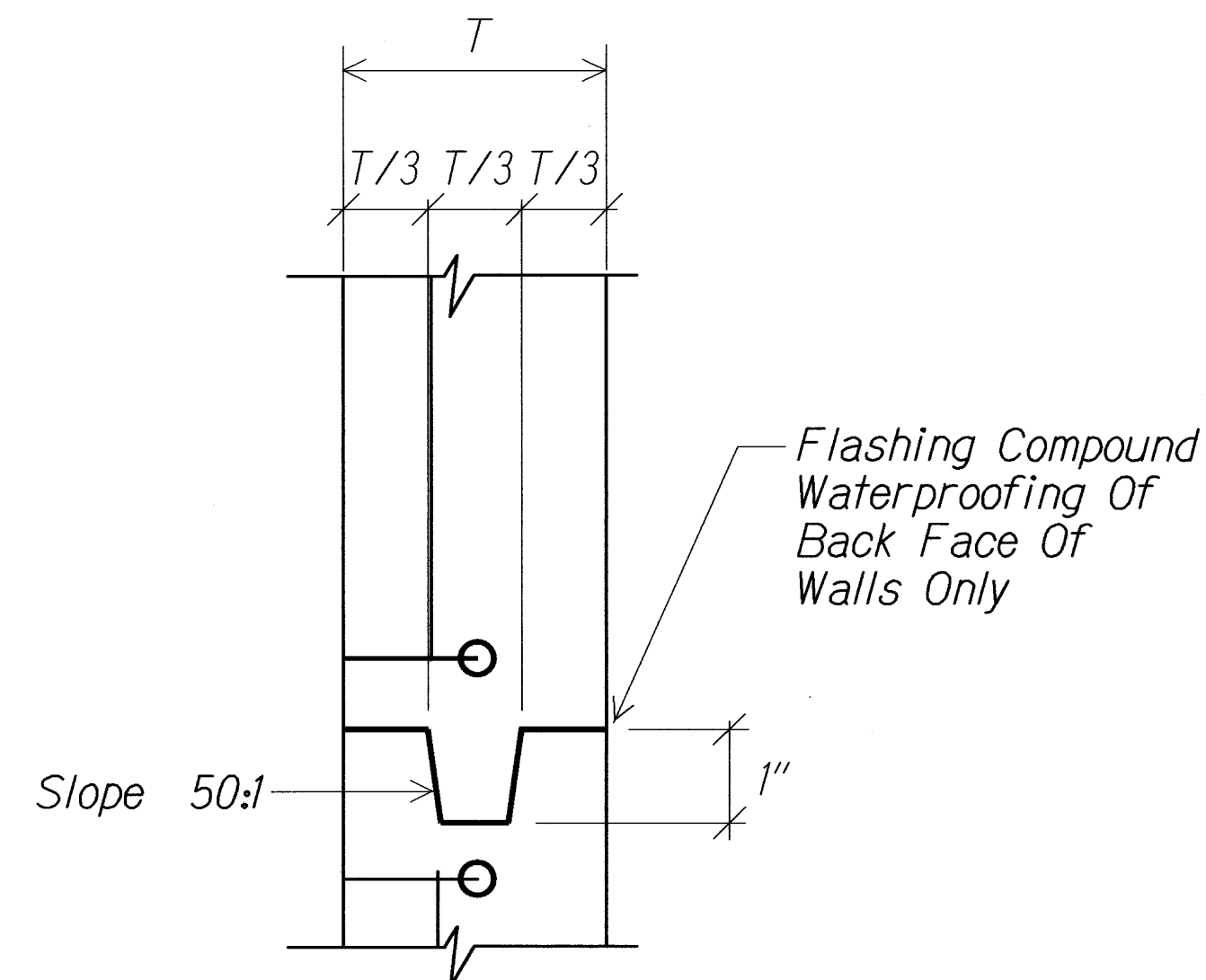


SECTION "B-B"

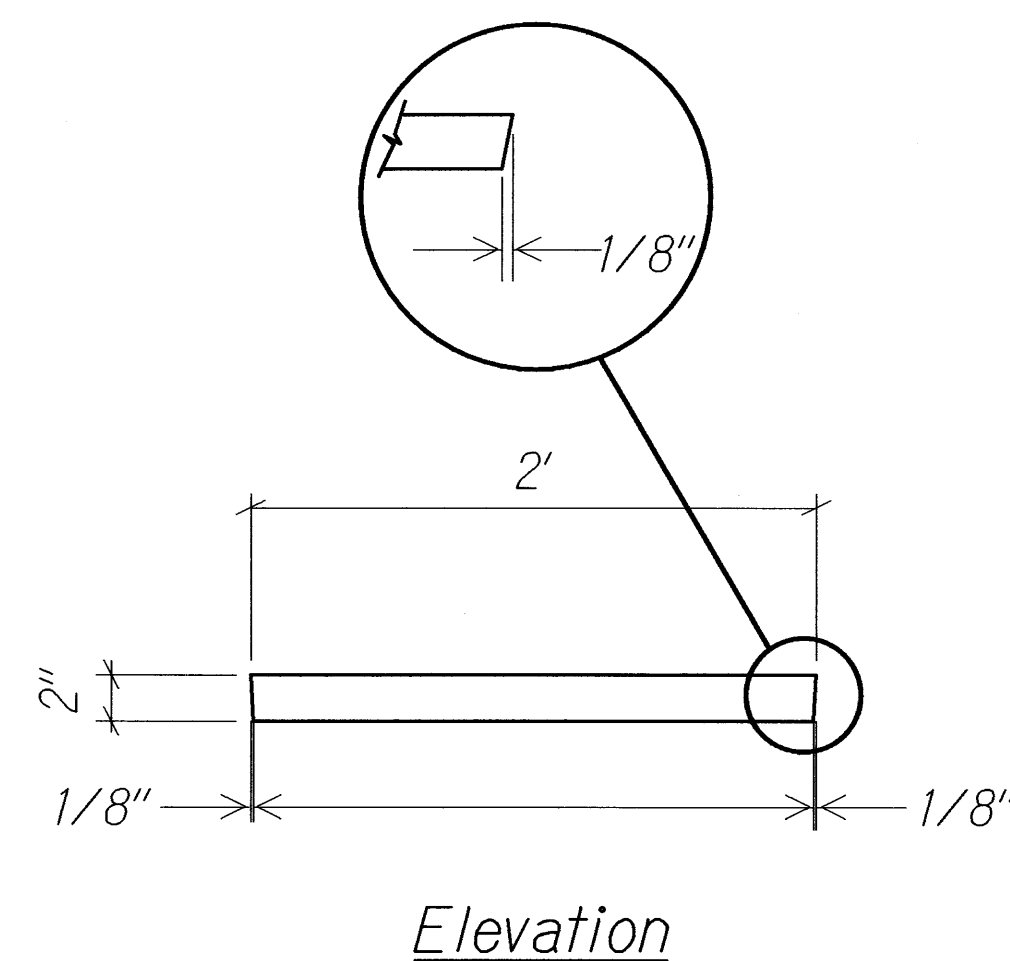


TYPE "C" PULLBOX
(OLD TYPE "D")

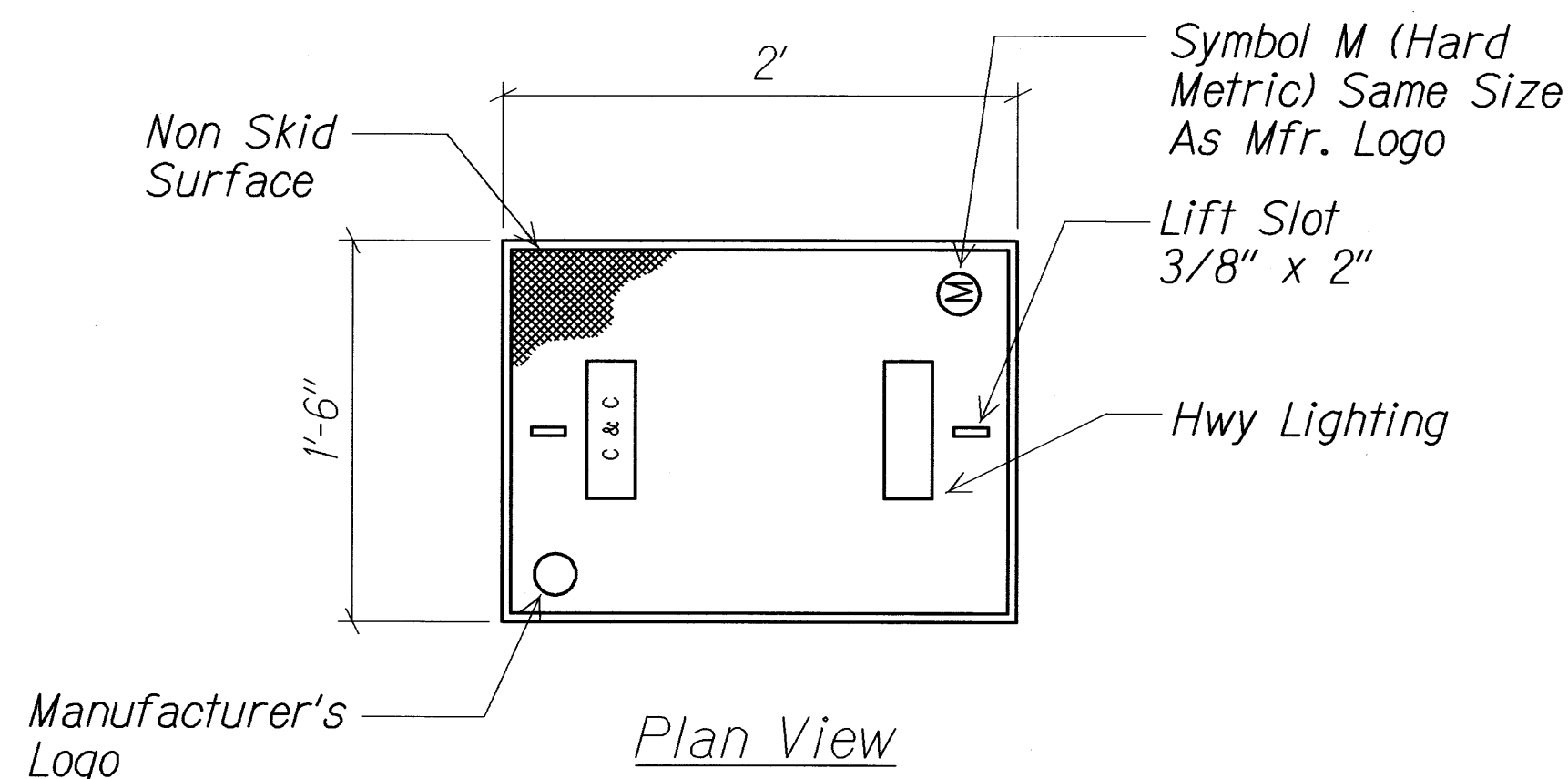
NOT TO SCALE



TYPICAL CONSTRUCTION JOINT DETAIL
NOT TO SCALE



Elevation

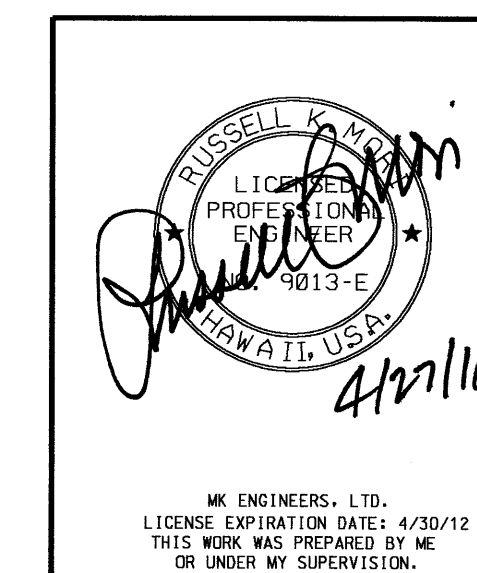


Plan View

POLYMER CONCRETE COVER
NOT TO SCALE

GENERAL NOTES:

1. Provide a Minimum Of One 5/8" Dia. x 8' Copperweld Ground Rod In Each Pullbox. When Directed By The Street Light Inspector/Engineer, Install Additional Ground Rods. Cost Of Ground Rods Shall Be Incidental To The Pullboxes.
2. All Pre-Cast Concrete Pullboxes Sshall Be Manufactured In Two Pieces.
3. The Pullbox With Cover Shall Be Capable Of Supporting An MS 18 Loading.
4. The Maximum Weight Of The Pullbox Cover Shall Not Exceed 27 Kilograms.
5. The Openings For The Conduits On All Pullboxes Shall Be Pre-Cast Concrete knockouts.
6. After Installing The Conduits In The Openings Of The Pullboxes, The Contractor Shall Fill The Excess Opening In The Pre-cast Knockouts With Concrete Mortar.
7. Prior To Installing The Pullboxes, The Contractor Shall Level The Bottom Of The Trench And Achieve a Minimum Of 95% Relative Compaction Of The Bottom Of The Trench.
8. All Concrete Shall Be Class A (25MPA, Min).
9. Rebars Shall Be Grade 300 And All Lapped Spaces Shall Be 360 mm Minimum.
10. The #57 or #67 Size Aggregate Shall Conform To Latest Version Of AASHTO M43 (ASTM D 448).
11. Pullbox Shall Be Installed In a Location Protected From Vehicular Traffic (I.E. Raised Sidewalk, Behind A.C. Curbs, Street Light Standard Or Pipe Guards).



STATE OF HAWAII
DEPARTMENT OF TRANSPORTATION
HIGHWAYS DIVISION
PULLBOX DETAILS

HANA HIGHWAY
TRAFFIC OPERATIONAL IMPROVEMENTS AT WAKEA AVENUE
Project No. HWY-M-01-08
Scale: As Noted Date: May 2010

SHEET No. E-5 OF 5 SHEETS