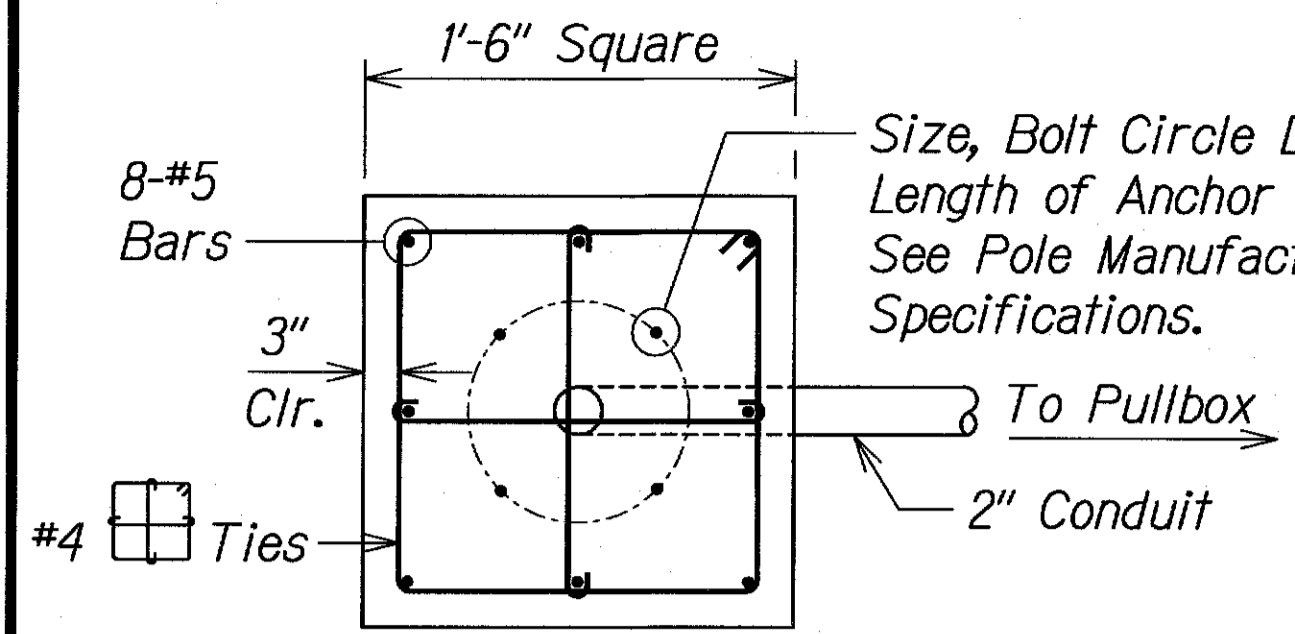
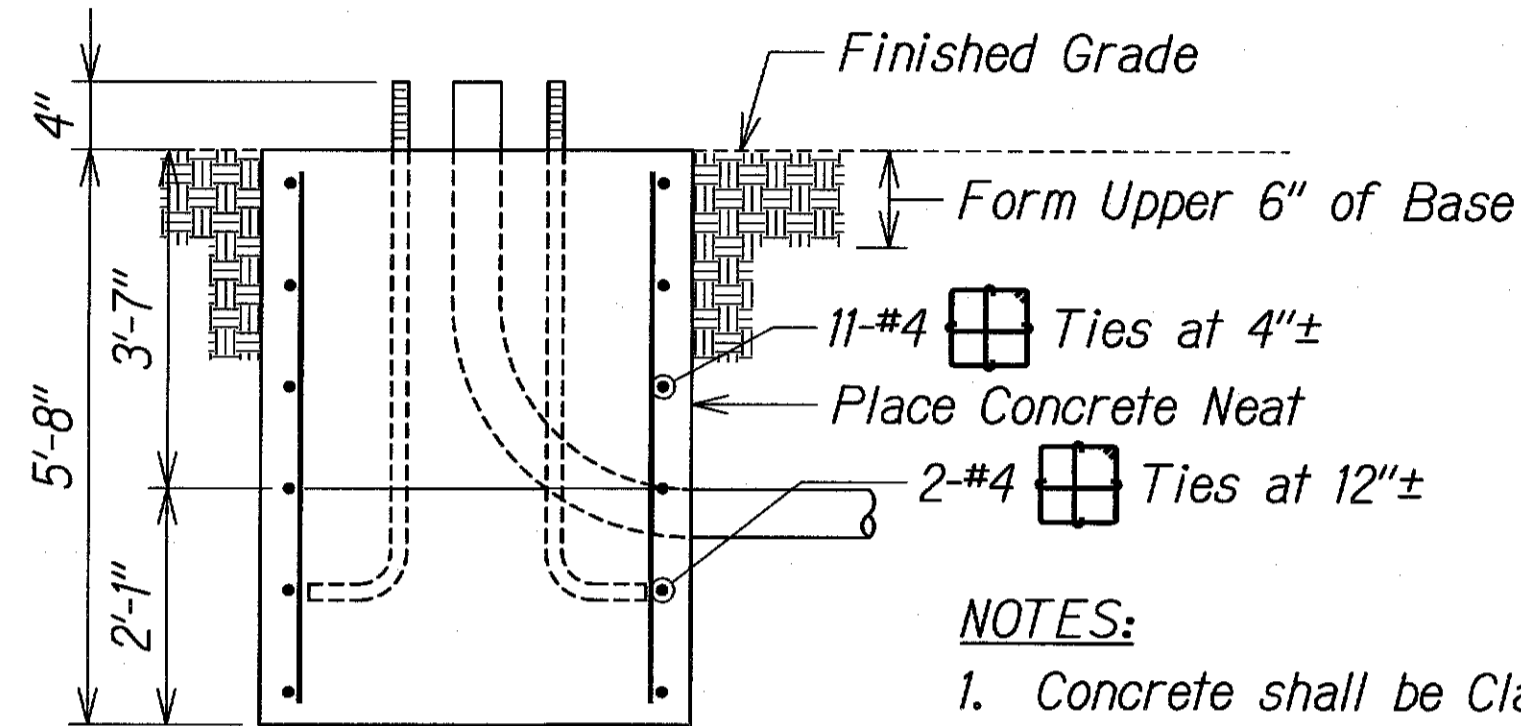


FED. ROAD DIST. NO.	STATE	PROJ. NO.	FISCAL YEAR	SHEET NO.	TOTAL SHEETS
HAWAII	HAW.	HWY-M-01-08	2010	7	17



PLAN - SECTION



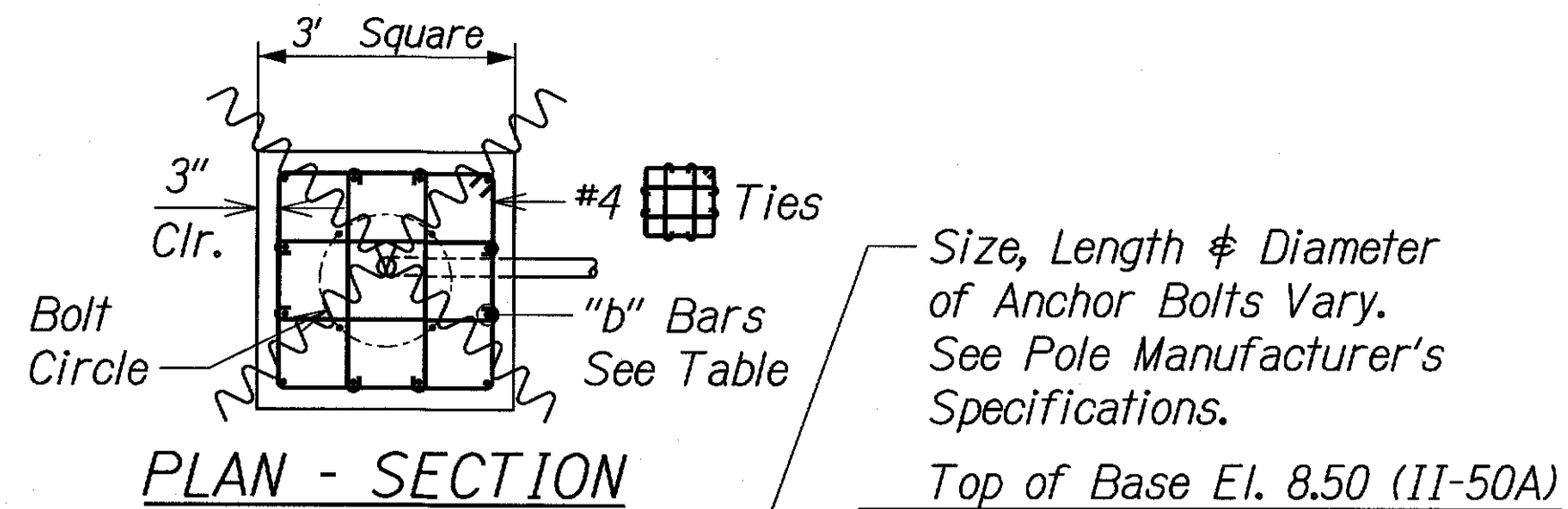
VERTICAL SECTION

TYPE "A" CONCRETE BASE

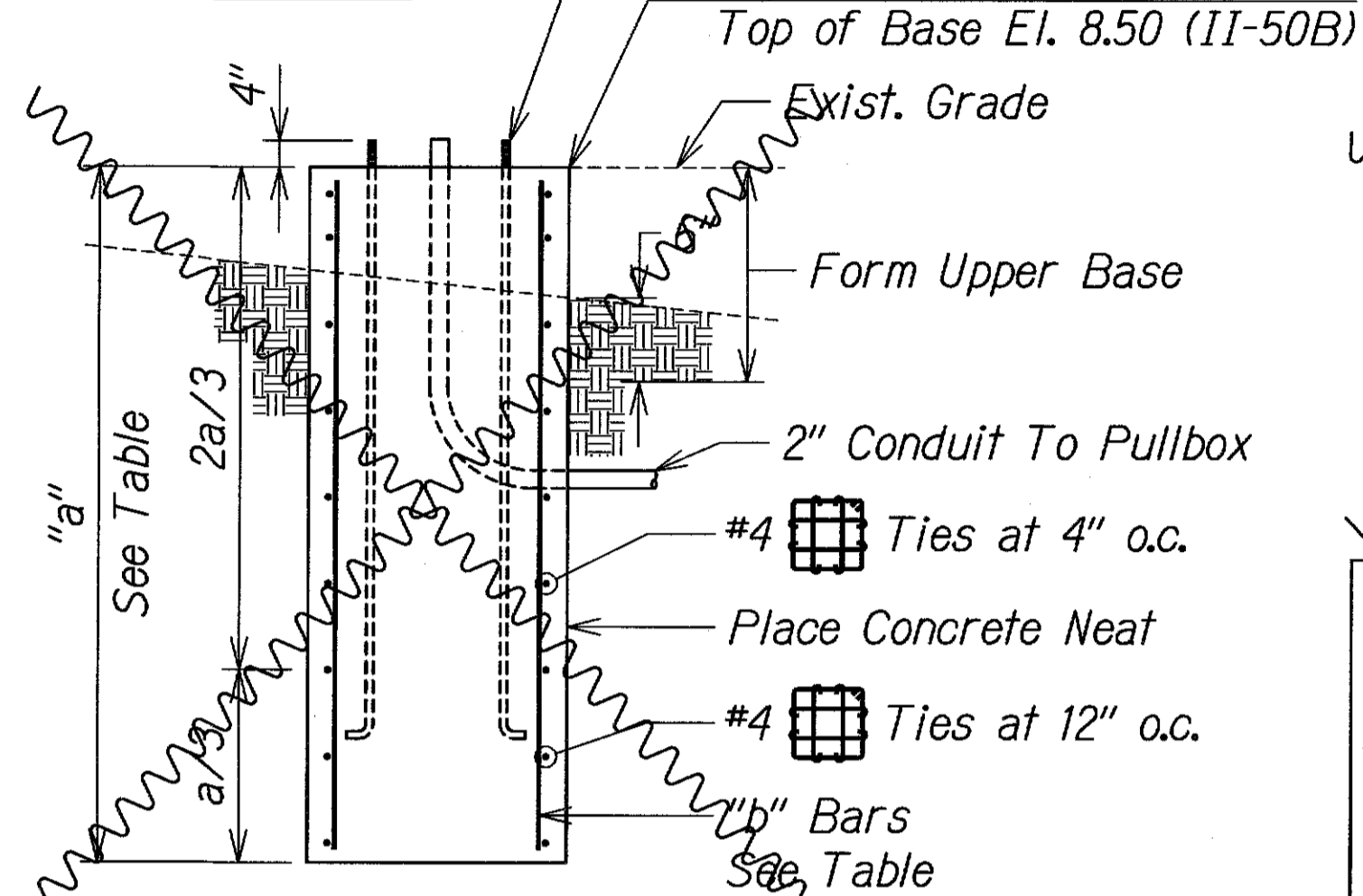
Not to Scale

NOTES:

1. Concrete shall be Class "A".
2. Type "A" concrete base shall be used for Type I-10 and I-7 Traffic Signal Standards.
3. Conduit bend is incidental to concrete base.



PLAN - SECTION



VERTICAL SECTION

TYPE "C" CONCRETE BASE (SEE SHT. NO. TS-7)

Not to Scale

TYPE "A" CONCRETE BASE

TYPE OF STANDARD	"a" Bars	"b" Bars
I - 10	5'-8"	8-#5
IA - 10	7'-9"	8-#5

TYPE "C" CONCRETE BASE

TYPE OF STANDARD	"a" Bars	"b" Bars
II - 50A	14'-6"	12-#5
II - 50B	13'-6"	12-#5

LEGEND FOR AS-BUILT POSTINGS

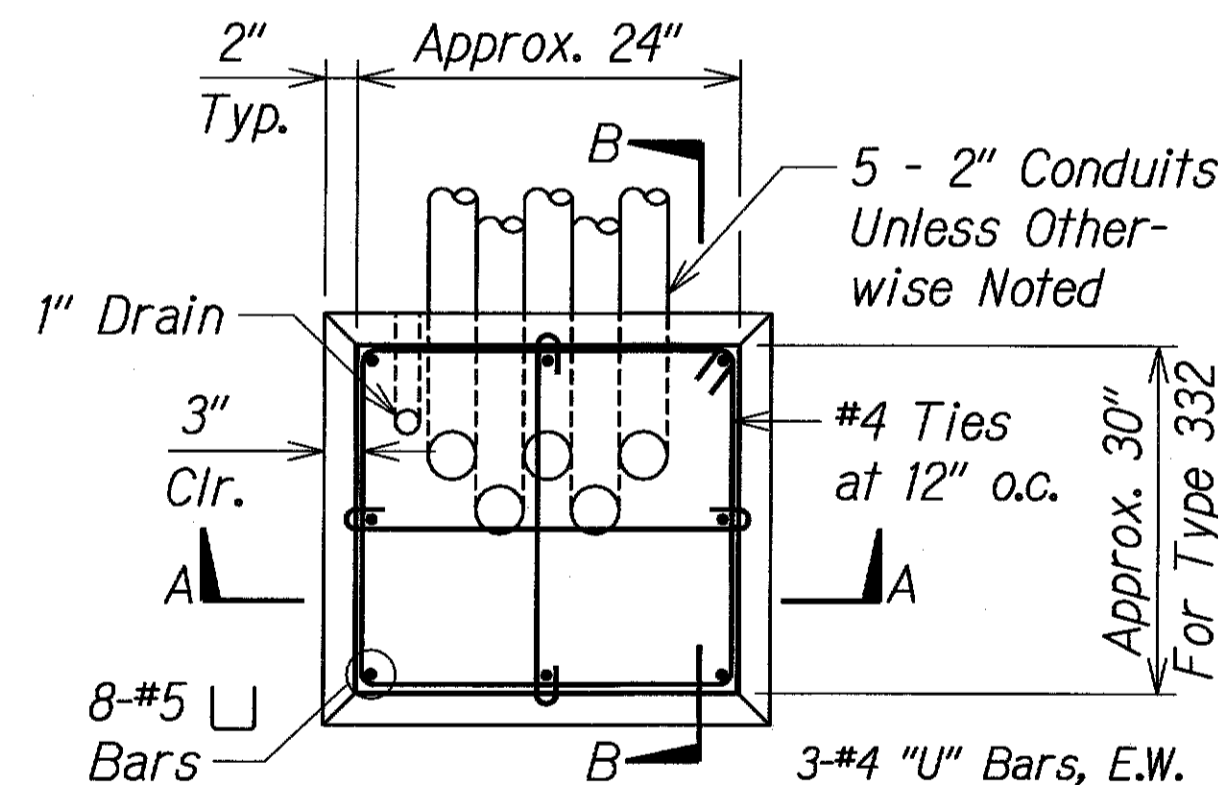
	Squiggly line for as-built deletion
	Double line for as-built deletion
	Text for as-built posting

Typical Standard Designation: II - 25

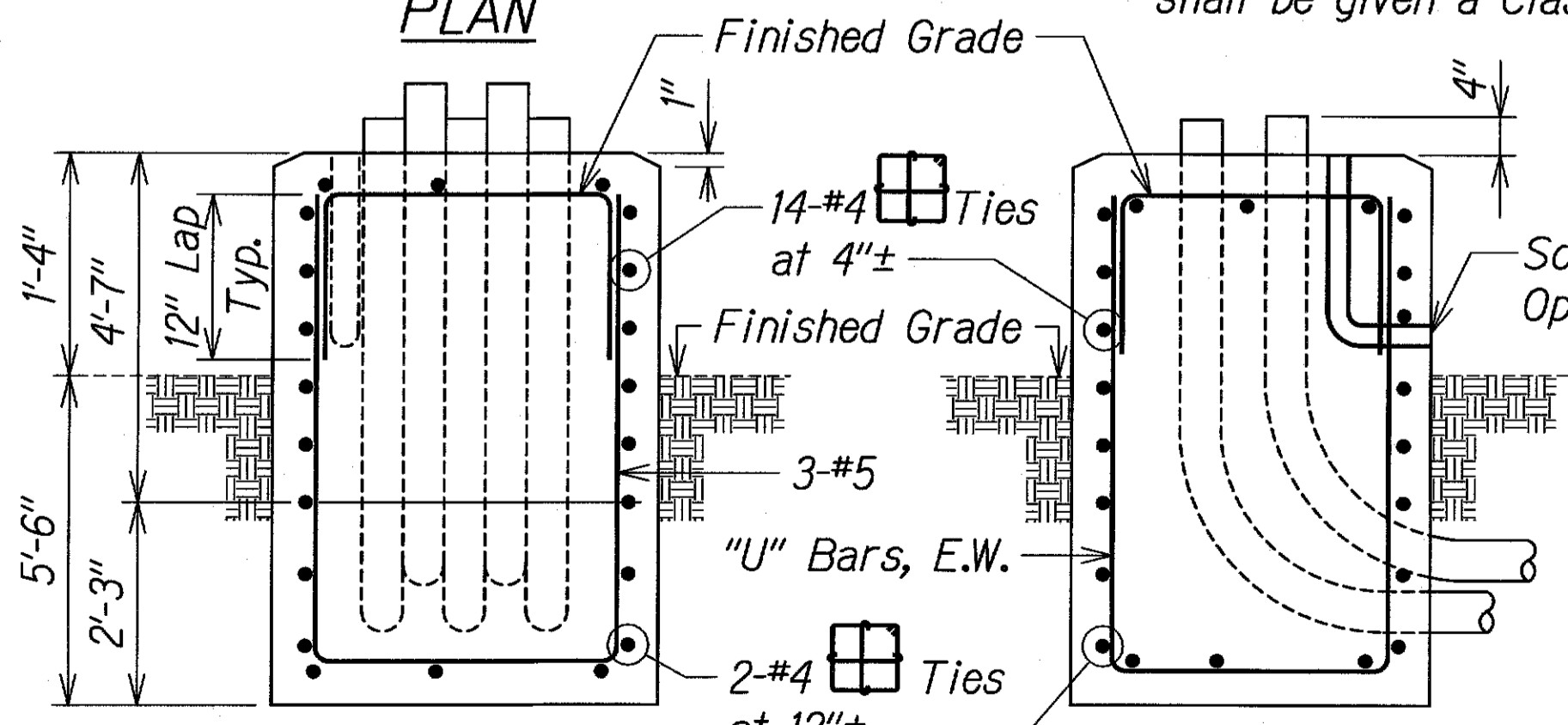
Type Mast Arm Length

NOTES:

1. Concrete shall be Class "A".
2. Type "C" concrete base shall be used for Types II Traffic Signal Standards. Provide shoring per OSHA requirements.
3. Design Lateral Pressure: 1,500 PSF (Service Load).
4. Conduit bend is incidental to concrete base.
5. Reinforcing steel shall conform to ASTM A615, Grade 60.



PLAN



SECTION "A"

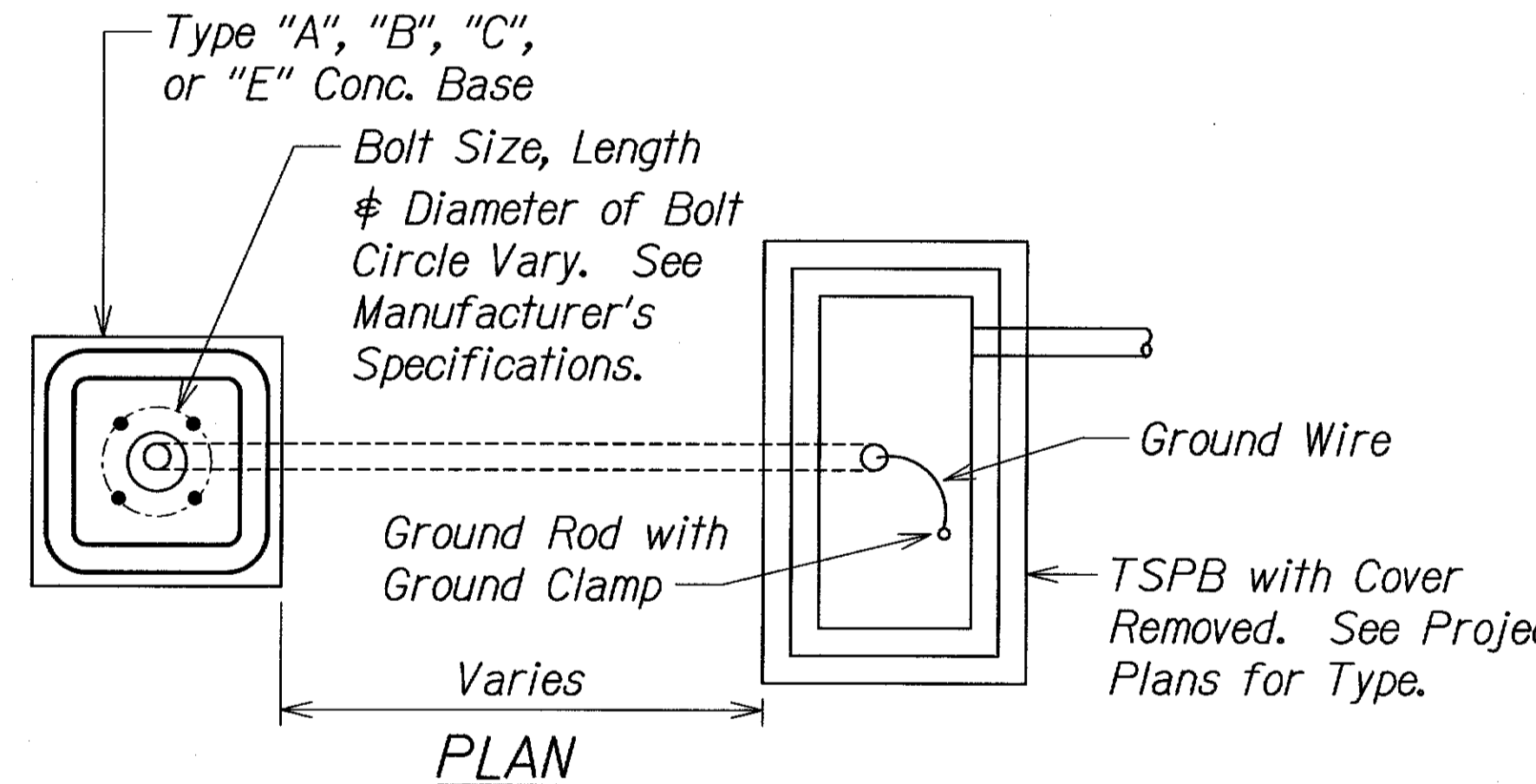
SECTION "B"

TYPE "D" CONC. BASE FOR CONTROLLER CABINETS

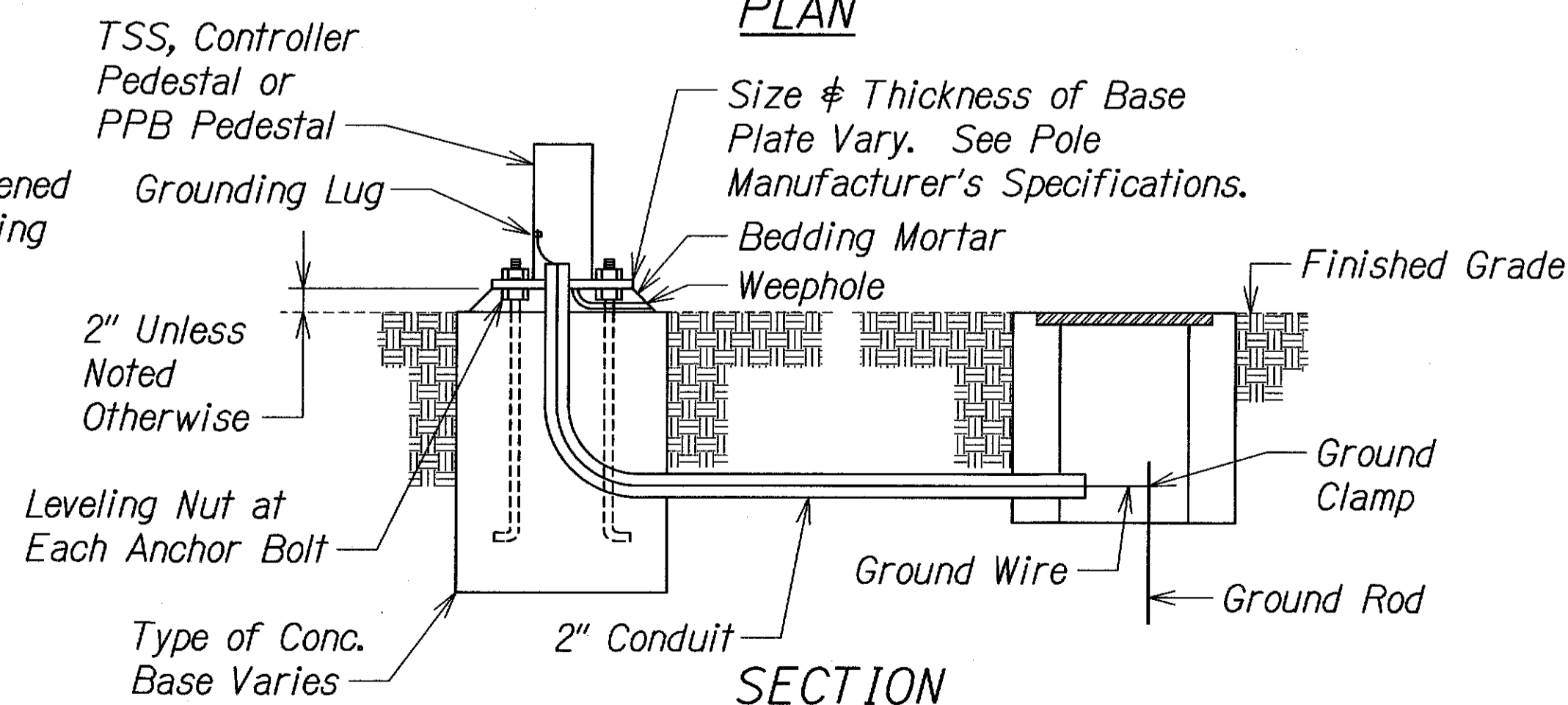
Not to Scale

NOTES:

1. Concrete shall be Class "A".
2. Dimensions shall be altered to suit controller cabinet actually furnished.
3. Conduit bends and drain are incidental to concrete base.
4. Refer to cabinet manufacturer's specifications for details of anchor bolts and base setting.
5. All exposed surfaces of concrete base shall be given a Class 2, Rubbed Finish.



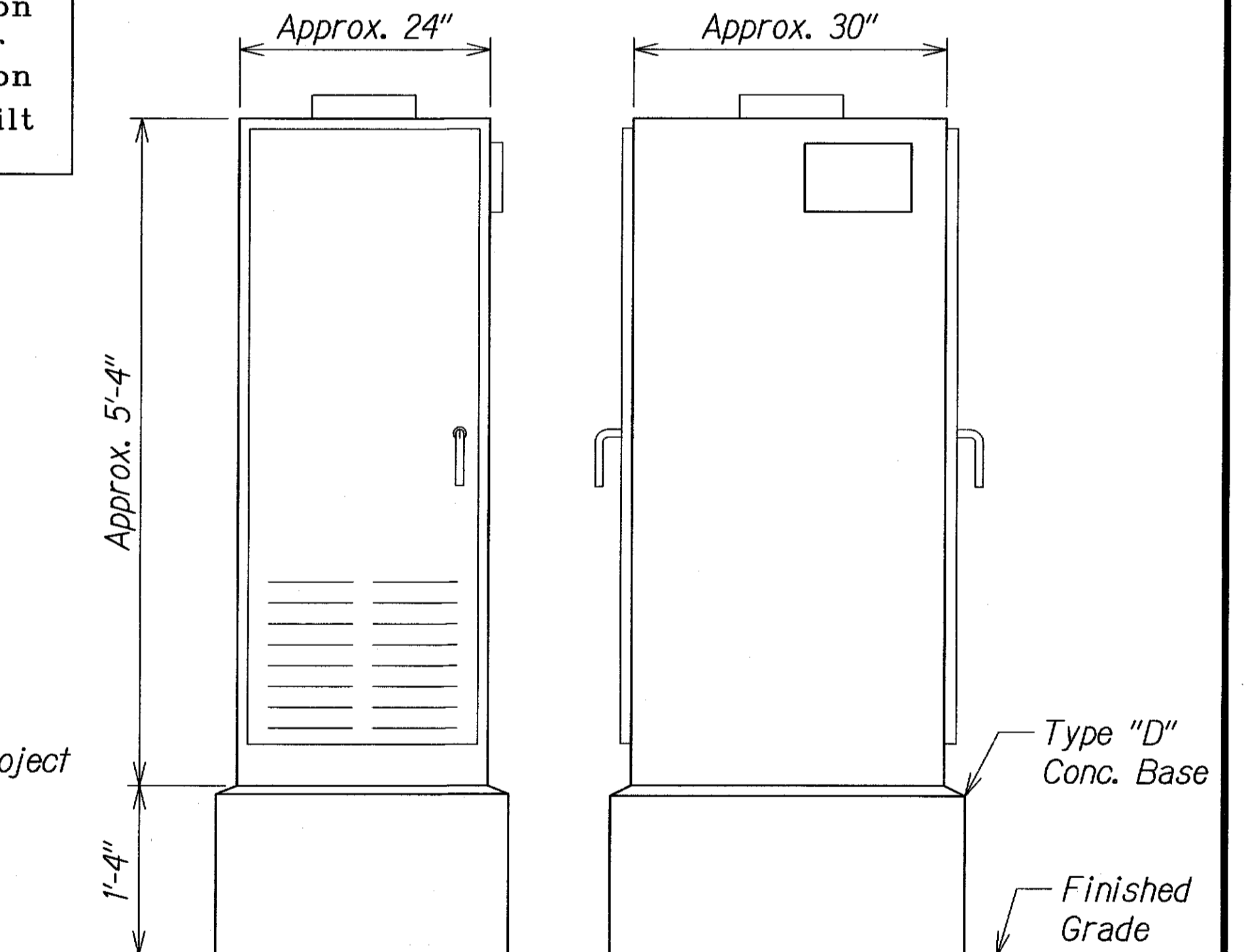
PLAN



SECTION

TYPICAL STANDARD AND PEDESTAL INSTALLATION

Not to Scale



FRONT VIEW

SIDE VIEW

TYPE 332A CABINET

Scale: 1" = 1'-0"

DATE
ORIGINAL PLAN
DRAWN BY
DESIGNED BY
CHECKED BY
SCALE

LIU PANG CHEN
LICENSED PROFESSIONAL ENGINEER
No. 3865-S
HAWAII, U.S.A.
THIS WORK WAS PREPARED BY ME OR UNDER MY SUPERVISION.
Signature: *Liu Pang Chen* 04/30/12
EXPIRATION DATE OF THE LICENSE

DEXTER S. ELLI
LICENSED PROFESSIONAL ENGINEER
No. 4739-C
HAWAII, U.S.A.
THIS WORK WAS PREPARED BY ME OR UNDER MY SUPERVISION.
Signature: *Dexter S. Elli* 04/30/12
EXPIRATION DATE OF THE LICENSE

STATE OF HAWAII
DEPARTMENT OF TRANSPORTATION
HIGHWAYS DIVISION

CABINET AND BASE DETAILS

HANA HIGHWAY
TRAFFIC OPERATIONAL IMPROVEMENTS AT WAKEA AVENUE
PROJECT NO. HWY-M-01-08
Scale: As Shown Date: May, 2010

SHEET No. TS-6 OF 12 SHEETS