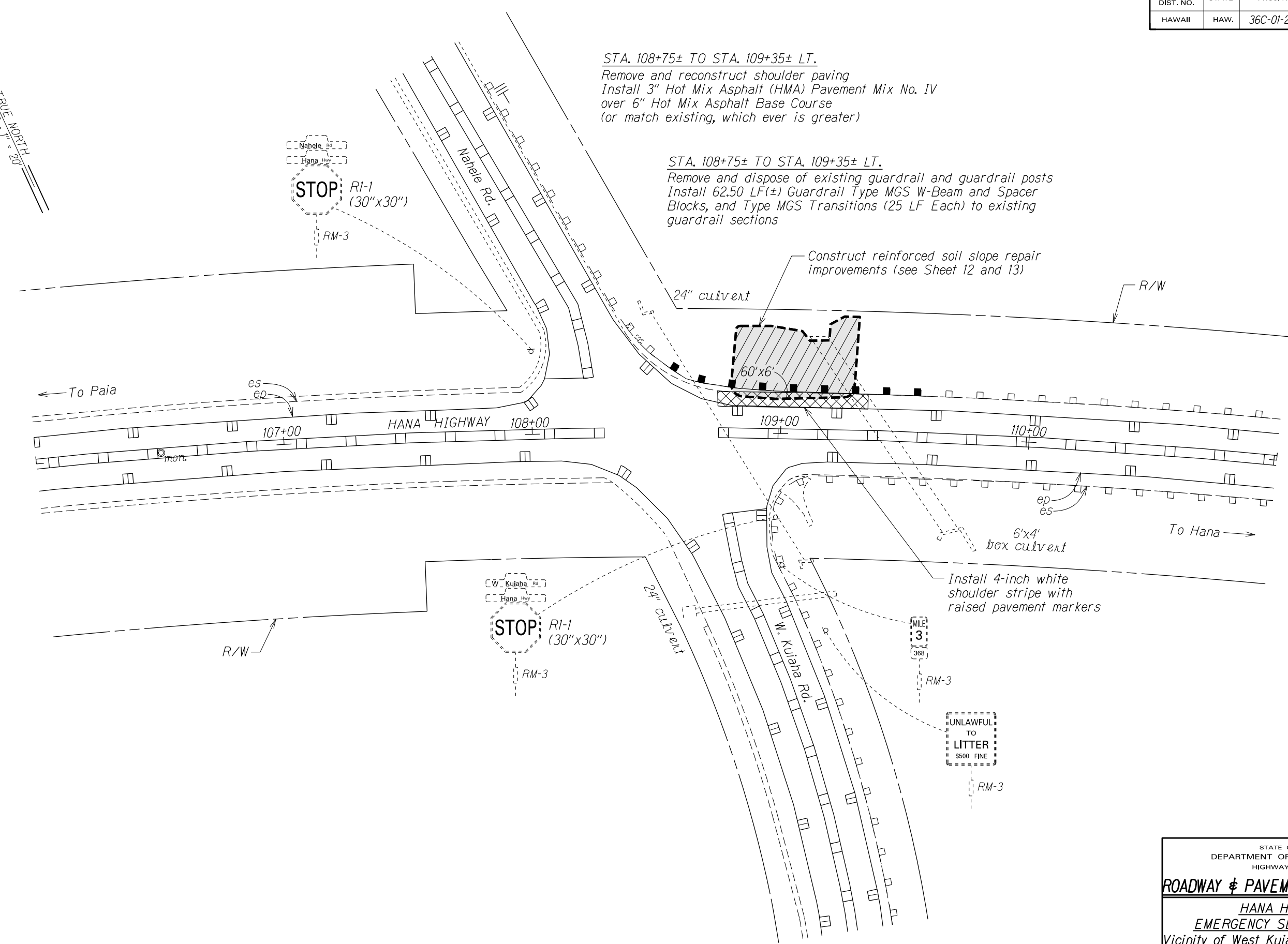


FED. ROAD DIST. NO.	STATE	PROJ. NO.	FISCAL YEAR	SHEET NO.	TOTAL SHEETS
HAWAII	HAW.	36C-01-22M	2022	14	14

TRUE NORTH
SCALE: 1" = 20'



STA. 108+75± TO STA. 109+35± LT.
Remove and reconstruct shoulder paving
Install 3" Hot Mix Asphalt (HMA) Pavement Mix No. IV
over 6" Hot Mix Asphalt Base Course
(or match existing, which ever is greater)

STA. 108+75± TO STA. 109+35± LT.
Remove and dispose of existing guardrail and guardrail posts
Install 62.50 LF(±) Guardrail Type MGS W-Beam and Spacer
Blocks, and Type MGS Transitions (25 LF Each) to existing
guardrail sections

Construct reinforced soil slope repair
improvements (see Sheet 12 and 13)

Install 4-inch white
shoulder stripe with
raised pavement markers

STATE OF HAWAII
DEPARTMENT OF TRANSPORTATION
HIGHWAYS DIVISION

ROADWAY & PAVEMENT MARKING PLAN

HANA HIGHWAY
EMERGENCY SLOPE REPAIRS
Vicinity of West Kuiaha Road Intersection
Project No. 36C-01-22M

Scale: 1" = 20' Date: October, 2022

SHEET No. 1 OF 1 SHEETS

ORIGINAL PLAN	SURVEY PLOTTED BY	DATE
PLAN	DRAWN BY	10/22
NOTE BOOK	DESIGNED BY	
ddx	QUANTITIES BY	
N	CHECKED BY	
X		