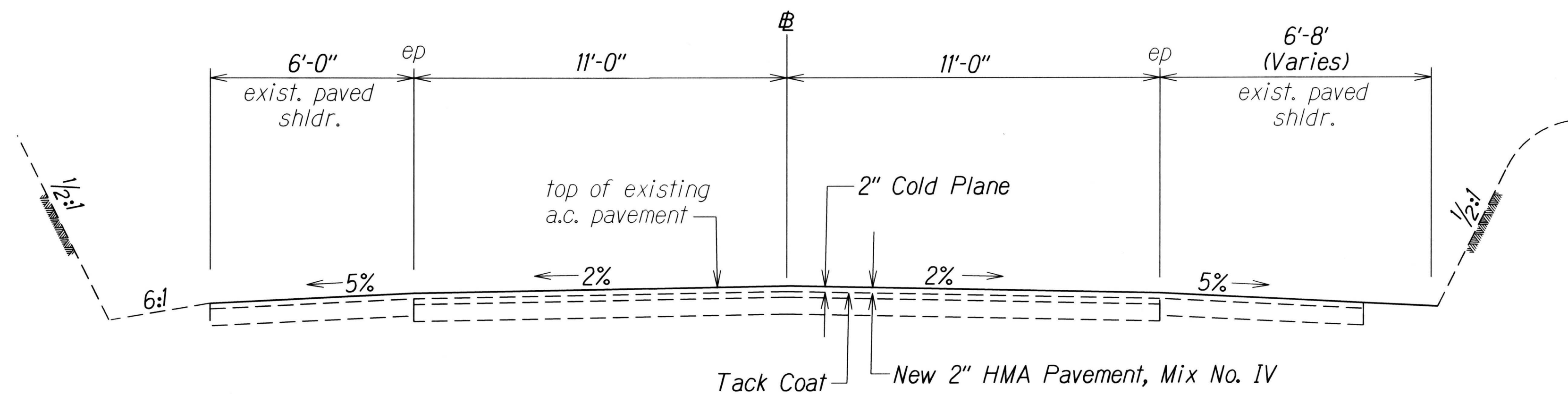
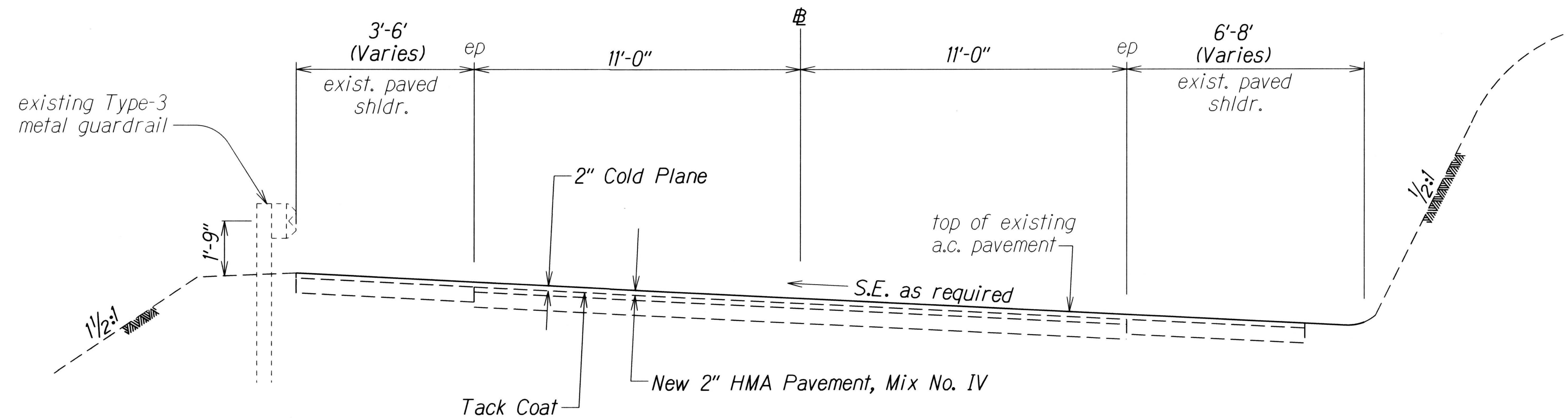


FED. ROAD DIST. NO.	STATE	PROJ. NO.	FISCAL YEAR	SHEET NO.	TOTAL SHEETS
HAWAII	HAW.	36BC-02-17M	2017	7	42



TYPICAL ROAD SECTION TANGENTS  
Scale:  $\frac{3}{8}$ " = 1'-0"



TYPICAL ROAD SECTION ON CURVES  
Scale:  $\frac{3}{8}$ " = 1'-0"

ORIGINAL PLAN	SURVEY PLOTTED BY	DATE
TRACED BY		3/10
NOTE BOOK		
QUANTITIES BY		
CHECKED BY		

STATE OF HAWAII  
DEPARTMENT OF TRANSPORTATION  
HIGHWAYS DIVISION

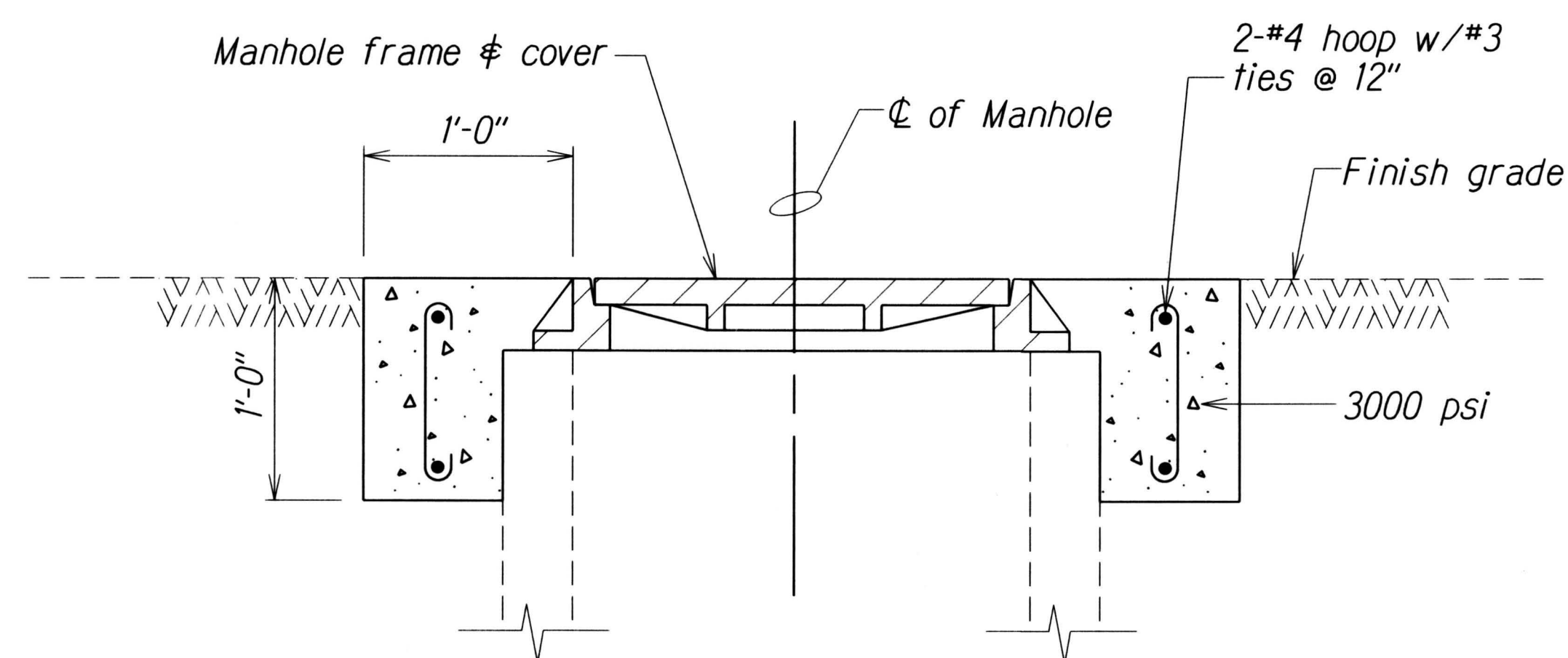
**TYPICAL SECTIONS & DETAILS**

HANA HIGHWAY RESURFACING  
Hookipa Park to Kaupakalua Road  
Project No. 36BC-02-17M

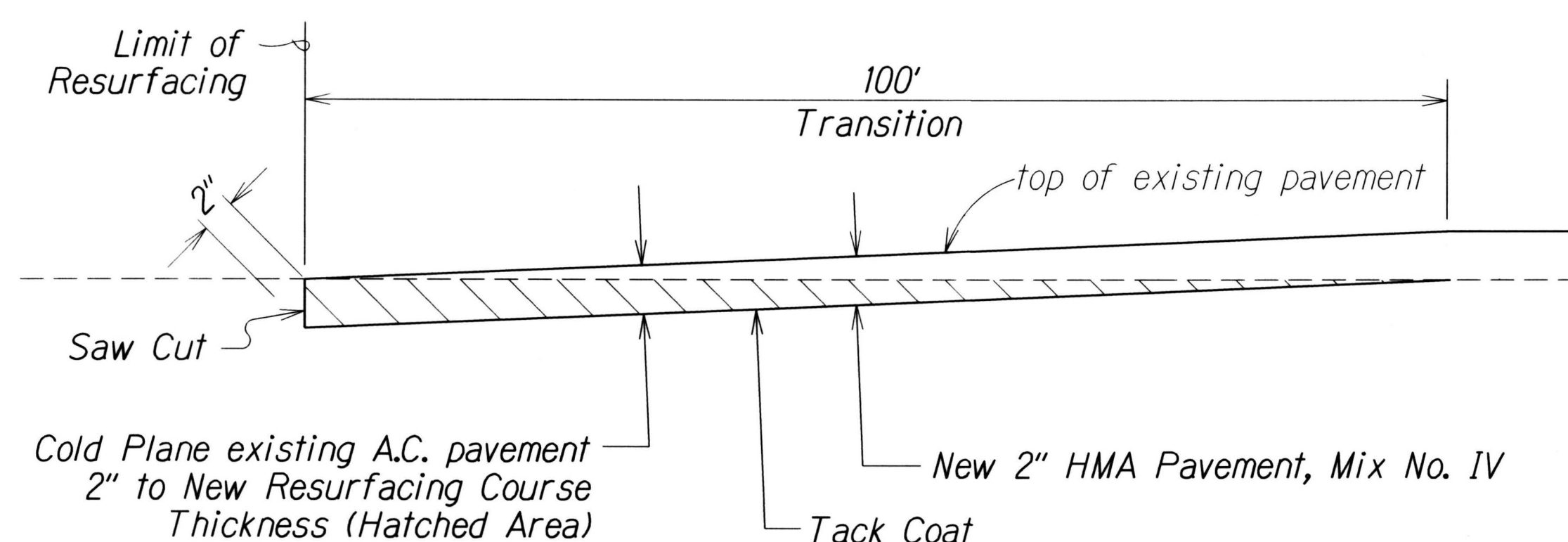
Scale: As Shown Date: December, 2016

SHEET No. 1 OF 2 SHEETS

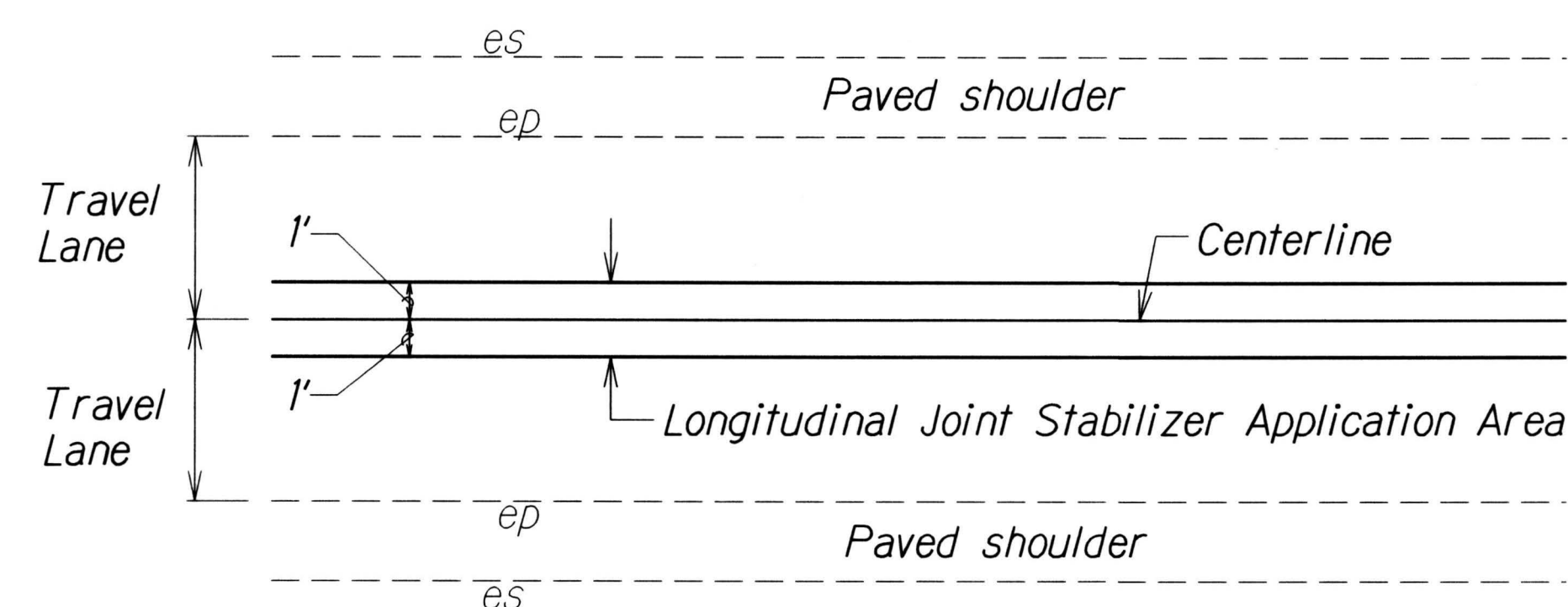
FED. ROAD DIST. NO.	STATE	PROJ. NO.	FISCAL YEAR	SHEET NO.	TOTAL SHEETS
HAWAII	HAW.	36BC-02-17M	2017	8	42



**DETAIL - CONCRETE COLLAR FOR  
ADJUSTMENTS OF MANHOLES AND VALVE BOX**  
Not To Scale



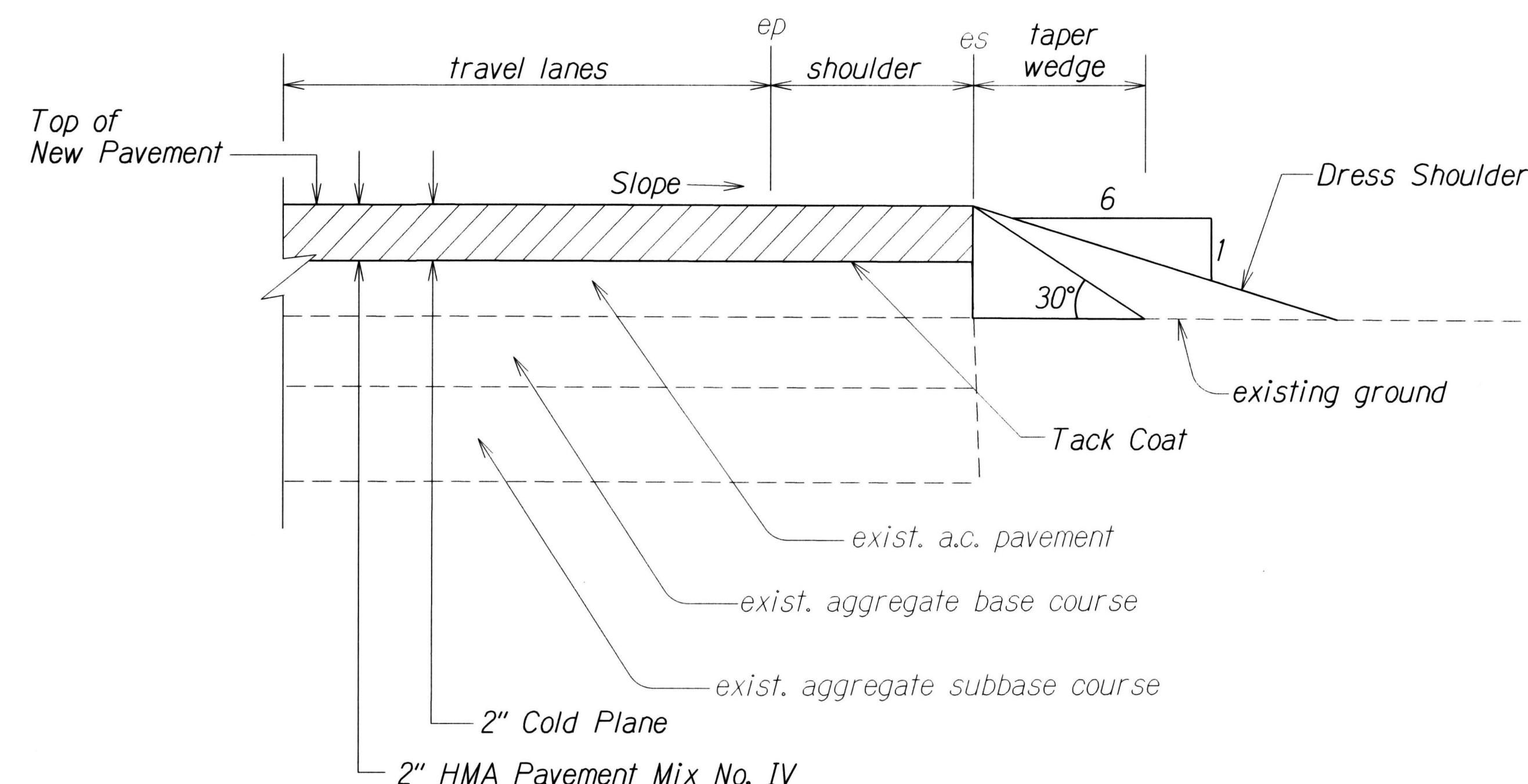
**COLD PLANED TRANSITION TO EXISTING A.C. PAVEMENT**  
Not To Scale



**TYPICAL SECTION FOR  
LONGITUDINAL JOINT STABILIZER**  
Not To Scale

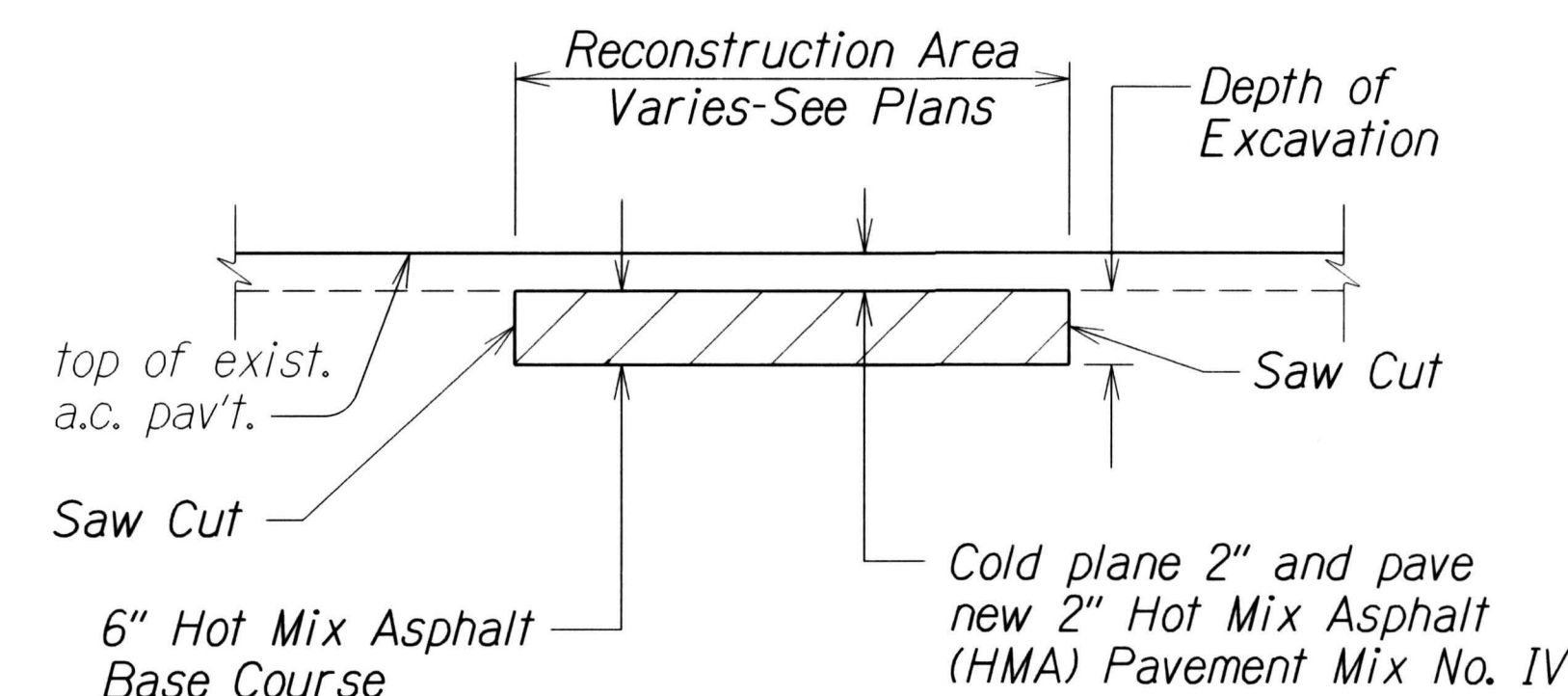
**NOTES:**

1. Unless directed by the Engineer, minimum graded shoulder width shall be 6 ft.
2. Where existing guardrails are located, depending on the location, paved shoulder shall be extended 1-foot behind the guardrail otherwise, pave at least up to the guardrail post. New guardrails shall be paved 1-foot behind guardrail post.
3. Unless directed by the Engineer, paved shoulder shall be terminated at the face of the bank.



Note: Contractor shall mount a device directly on the paver screed extension to provide a 30° beveled shoulder edge.

**TYPICAL PAVEMENT EDGE DETAIL**  
Not To Scale



**A.C. PAVEMENT RECONSTRUCTION DETAIL**  
Not To Scale

SURVEY PLOTTED BY	DATE
DRAWN BY	10/16
TRACED BY	
QUANTITIES BY	
CHECKED BY	

STATE OF HAWAII DEPARTMENT OF TRANSPORTATION HIGHWAYS DIVISION
<b>TYPICAL SECTIONS &amp; DETAILS</b>
<b>HANA HIGHWAY RESURFACING</b> <b>Hookipa Park to Kaupakalua Road</b> <b>Project No. 36BC-02-17M</b>
Scale: As Shown Date: December, 2016
SHEET No. 2 OF 2 SHEETS