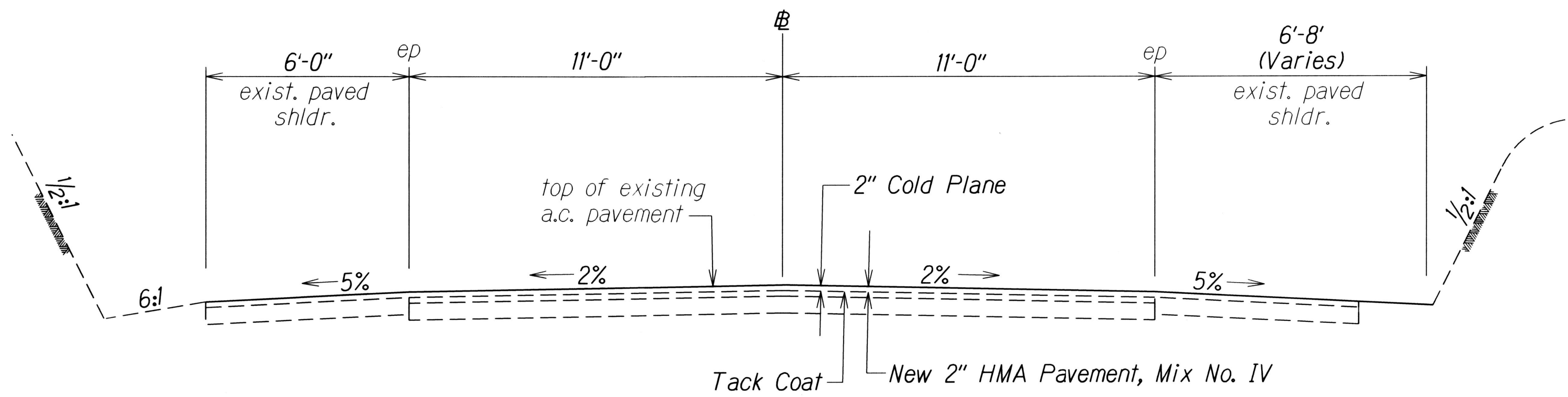
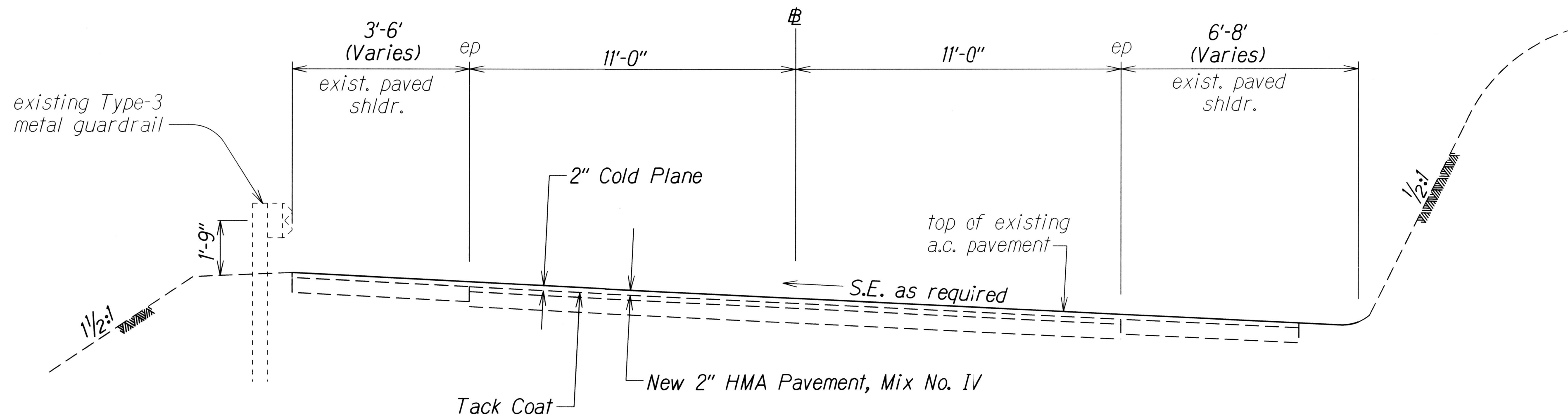


FED. ROAD DIST. NO.	STATE	PROJ. NO.	FISCAL YEAR	SHEET NO.	TOTAL SHEETS
HAWAII	HAW.	36BC-02-17M	2018	7	42



TYPICAL ROAD SECTION TANGENTS
Scale: $\frac{3}{8}" = 1'-0"$



TYPICAL ROAD SECTION ON CURVES
Scale: $\frac{3}{8}" = 1'-0"$

ORIGINAL PLAN	SURVEY PLOTTED BY	DATE
NOTE BOOK	DESIGNED BY	
	QUANTITIES BY	
	CHECKED BY	

STATE OF HAWAII
DEPARTMENT OF TRANSPORTATION
HIGHWAYS DIVISION

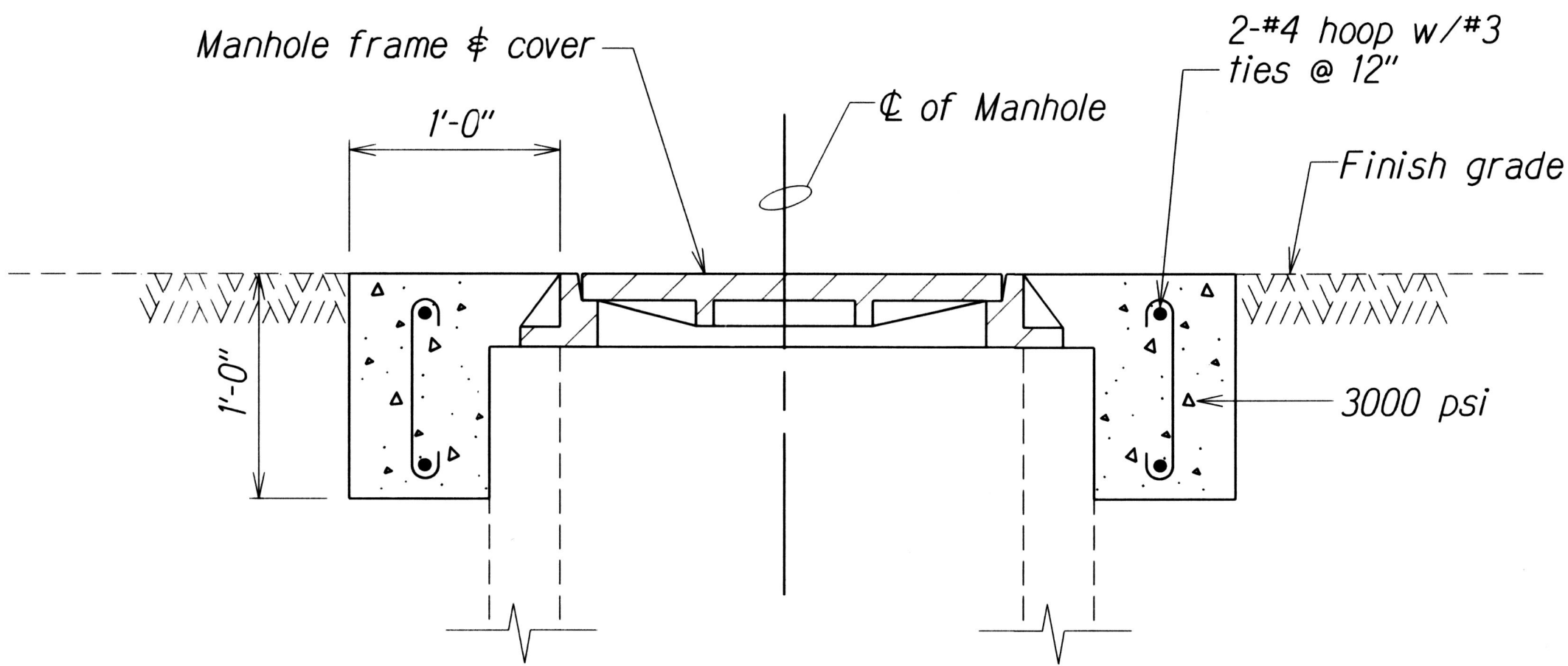
TYPICAL SECTIONS & DETAILS

HANA HIGHWAY RESURFACING
Hookipa Park to Kaupakalua Road
Project No. 36BC-02-17M

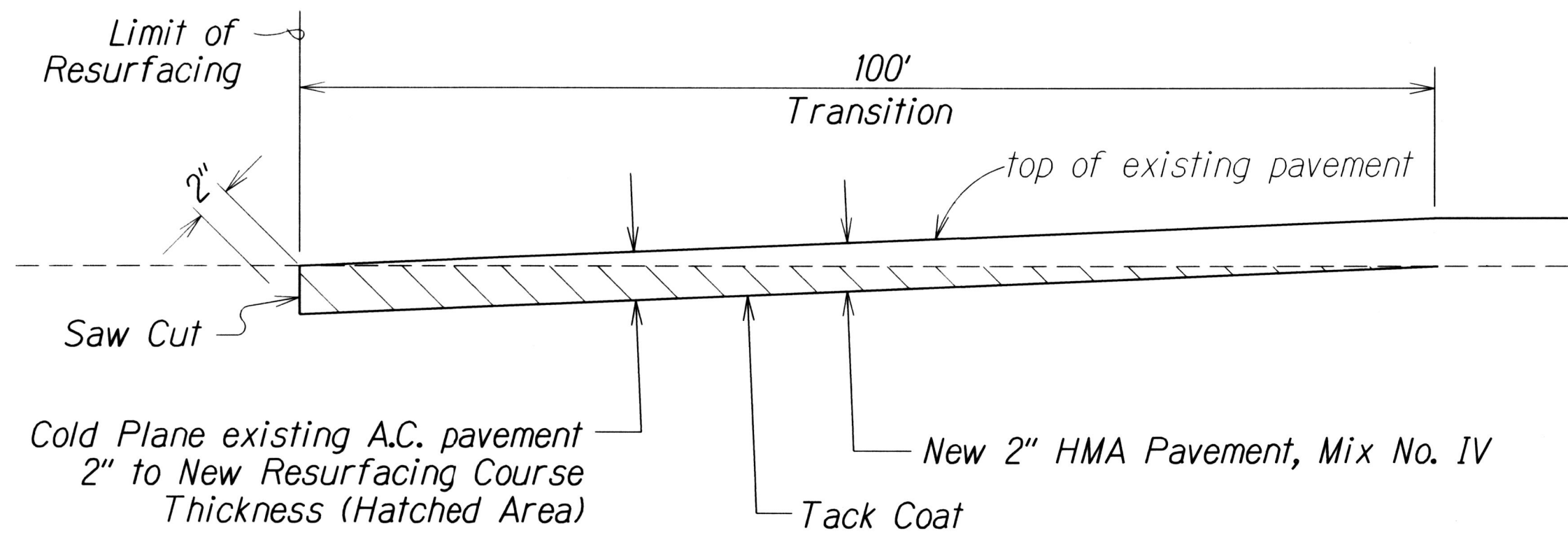
Scale: As Shown Date: December, 2016

SHEET No. 1 OF 2 SHEETS

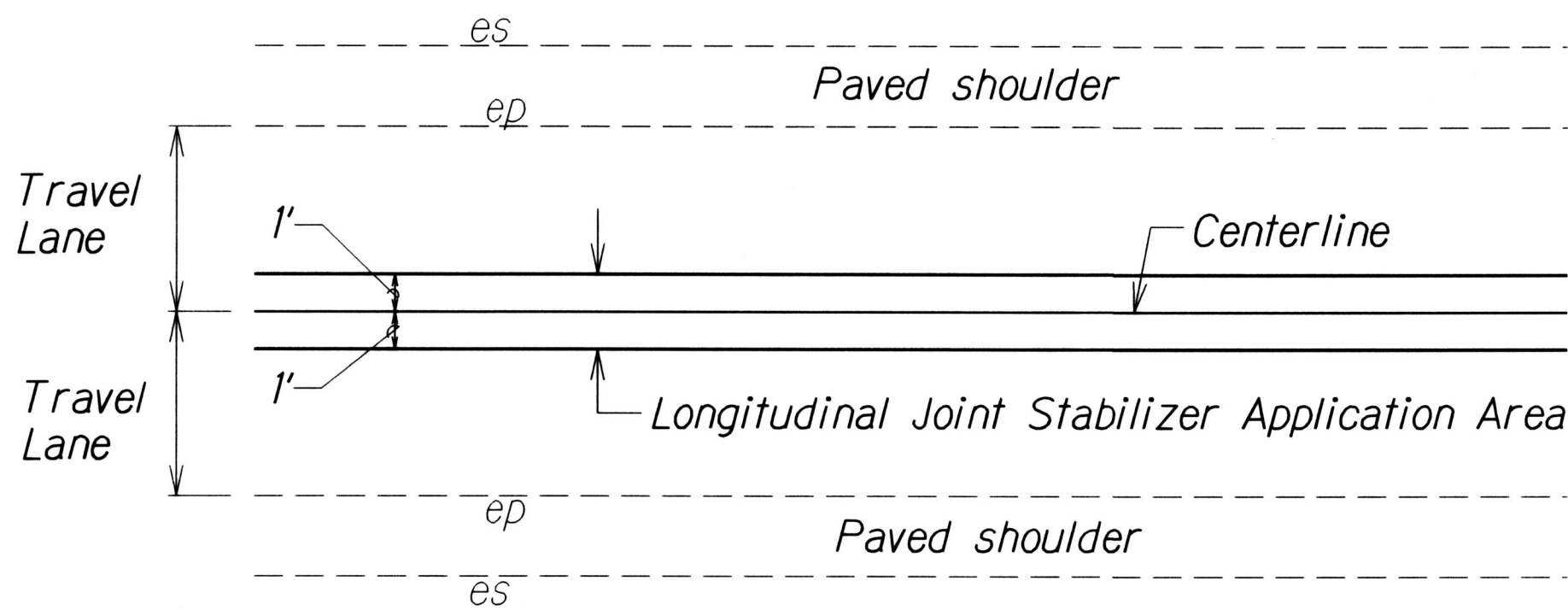
FED. ROAD DIST. NO.	STATE	PROJ. NO.	FISCAL YEAR	SHEET NO.	TOTAL SHEETS
HAWAII	HAW.	36BC-02-17M	2018	8	42



**DETAIL - CONCRETE COLLAR FOR
ADJUSTMENTS OF MANHOLES AND VALVE BOX**
Not To Scale



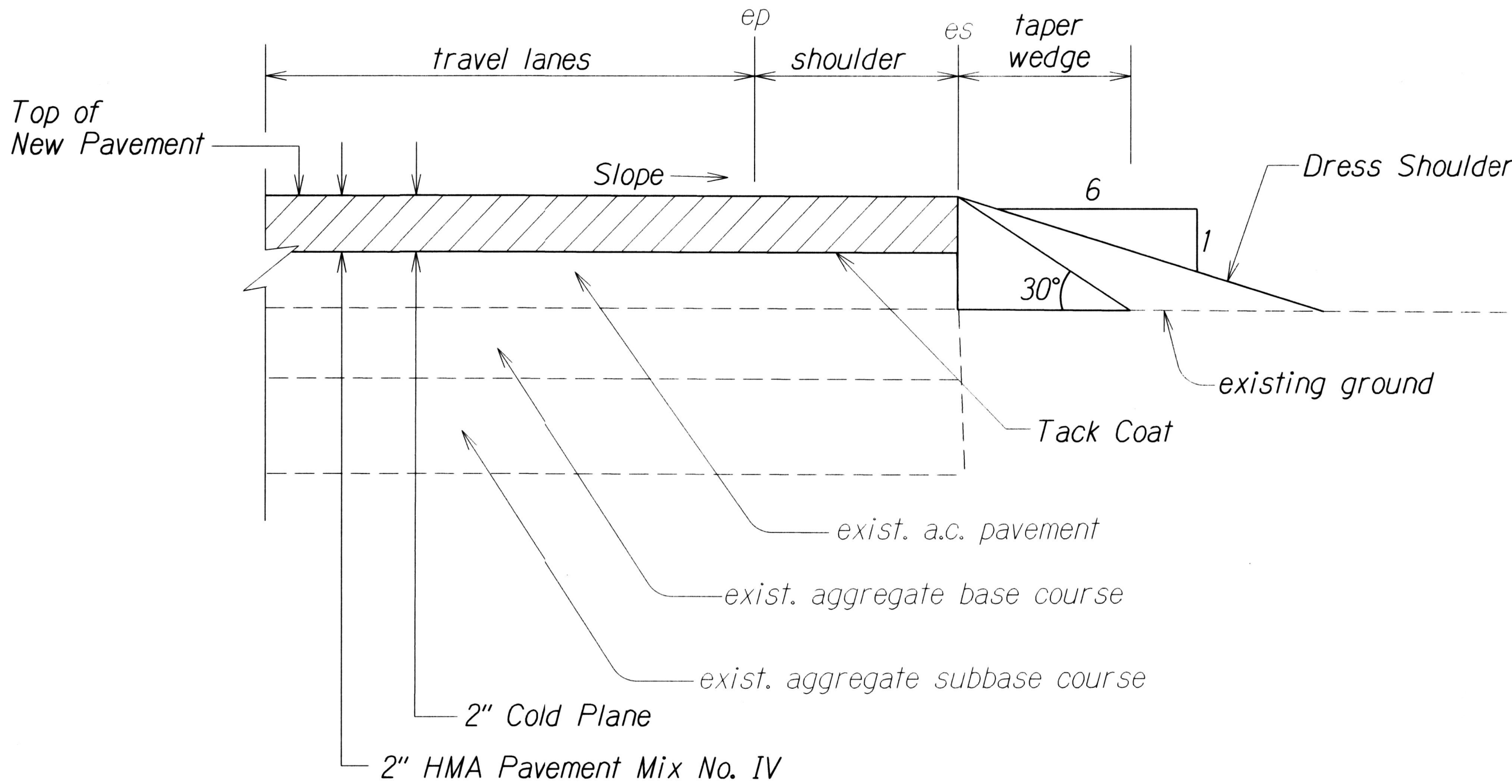
COLD PLANED TRANSITION TO EXISTING A.C. PAVEMENT
Not To Scale



**TYPICAL SECTION FOR
LONGITUDINAL JOINT STABILIZER**
Not To Scale

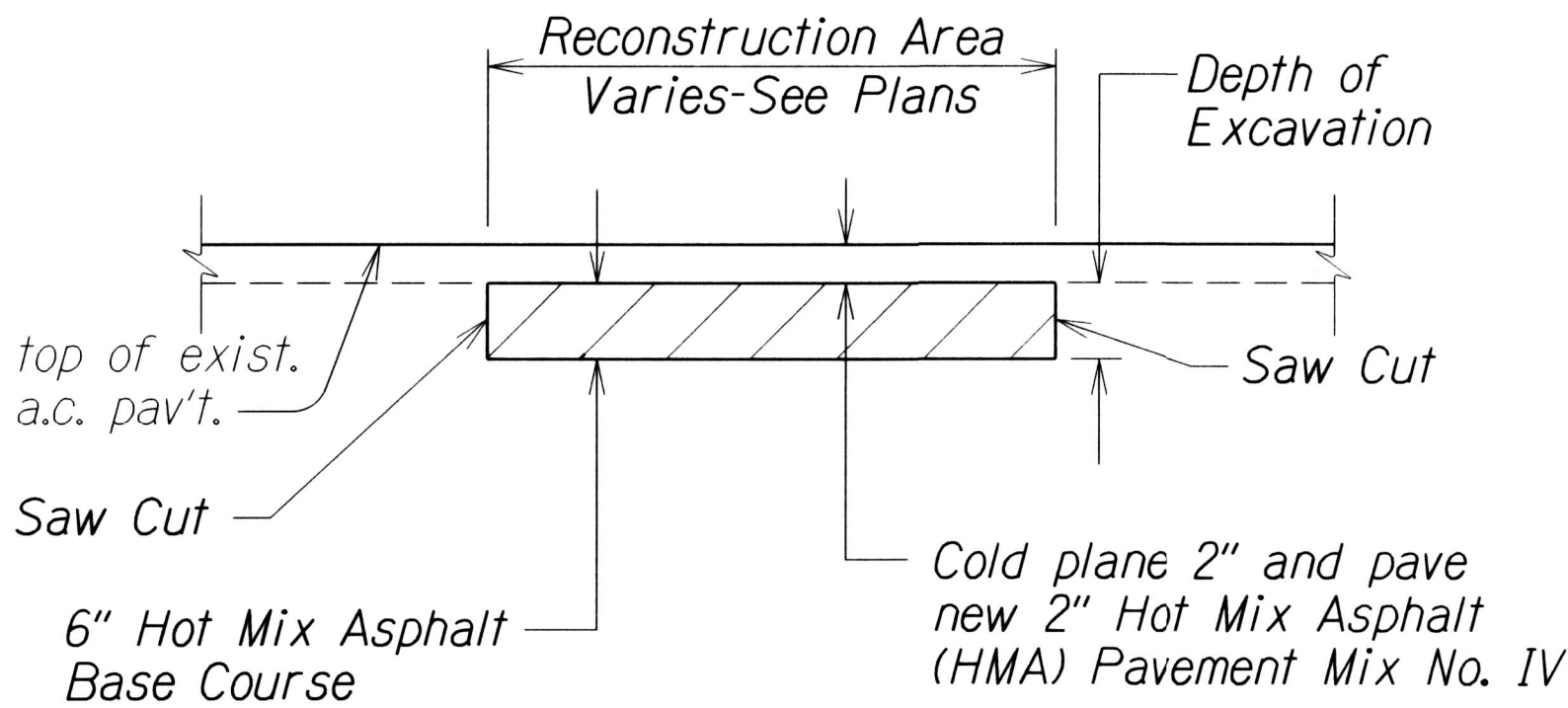
NOTES:

1. Unless directed by the Engineer, minimum graded shoulder width shall be 6 ft.
2. Where existing guardrails are located, depending on the location, paved shoulder shall be extended 1-foot behind the guardrail otherwise, pave at least up to the guardrail post. New guardrails shall be paved 1-foot behind guardrail post.
3. Unless directed by the Engineer, paved shoulder shall be terminated at the face of the bank.



Note: Contractor shall mount a device directly on the paver screed extension to provide a 30° beveled shoulder edge.

TYPICAL PAVEMENT EDGE DETAIL
Not To Scale



A.C. PAVEMENT RECONSTRUCTION DETAIL
Not To Scale

STATE OF HAWAII
DEPARTMENT OF TRANSPORTATION
HIGHWAYS DIVISION

TYPICAL SECTIONS & DETAILS

HANA HIGHWAY RESURFACING
Hookipa Park to Kaipakalua Road
Project No. 36BC-02-17M

Scale: As Shown Date: December, 2016

SHEET No. 2 OF 2 SHEETS

DESIGNED BY	DATE
CHECKED BY	10/16
NOTED BY	
QUANTITIES BY	
PLANNED BY	
ORIGINAL PLAN	