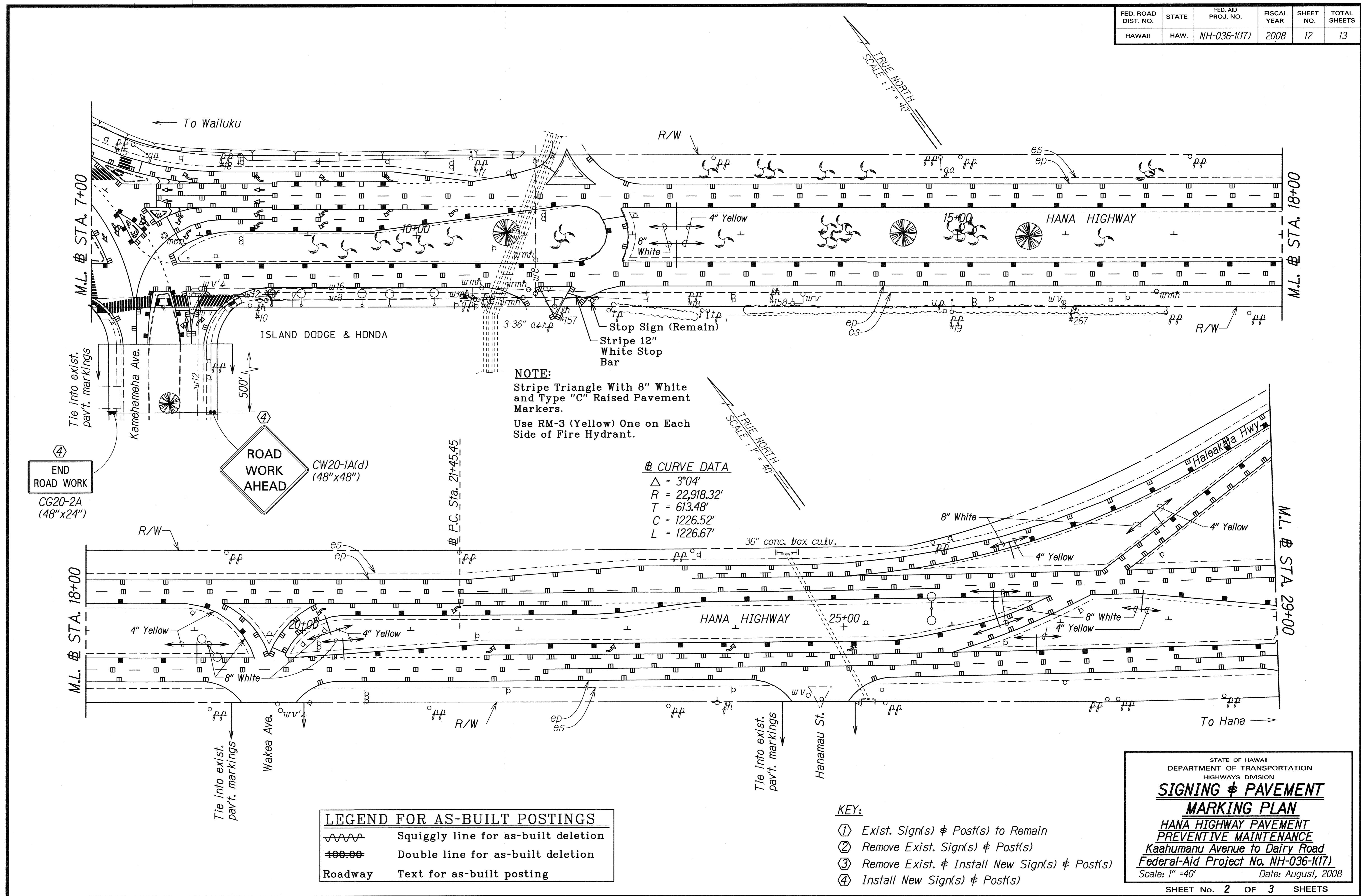


| FED. ROAD DIST. NO. | STATE | FED. AID PROJ. NO. | FISCAL YEAR | SHEET NO. | TOTAL SHEETS |
|---------------------|-------|--------------------|-------------|-----------|--------------|
| HAWAII | HAW. | NH-036-1(17) | 2008 | 12 | 13 |



NOTE:
 Stripe Triangle With 8" White and Type "C" Raised Pavement Markers.
 Use RM-3 (Yellow) One on Each Side of Fire Hydrant.

CURVE DATA
 $\Delta = 3^{\circ}04'$
 $R = 22,918.32'$
 $T = 613.48'$
 $C = 1226.52'$
 $L = 1226.67'$

END ROAD WORK
 CG20-2A
 (48"x24")

ROAD WORK AHEAD
 CW20-1A(d)
 (48"x48")

LEGEND FOR AS-BUILT POSTINGS

| | |
|---------|-------------------------------------|
| | Squiggly line for as-built deletion |
| | Double line for as-built deletion |
| Roadway | Text for as-built posting |

- KEY:**
- ① Exist. Sign(s) & Post(s) to Remain
 - ② Remove Exist. Sign(s) & Post(s)
 - ③ Remove Exist. & Install New Sign(s) & Post(s)
 - ④ Install New Sign(s) & Post(s)

STATE OF HAWAII
 DEPARTMENT OF TRANSPORTATION
 HIGHWAYS DIVISION

SIGNING & PAVEMENT MARKING PLAN

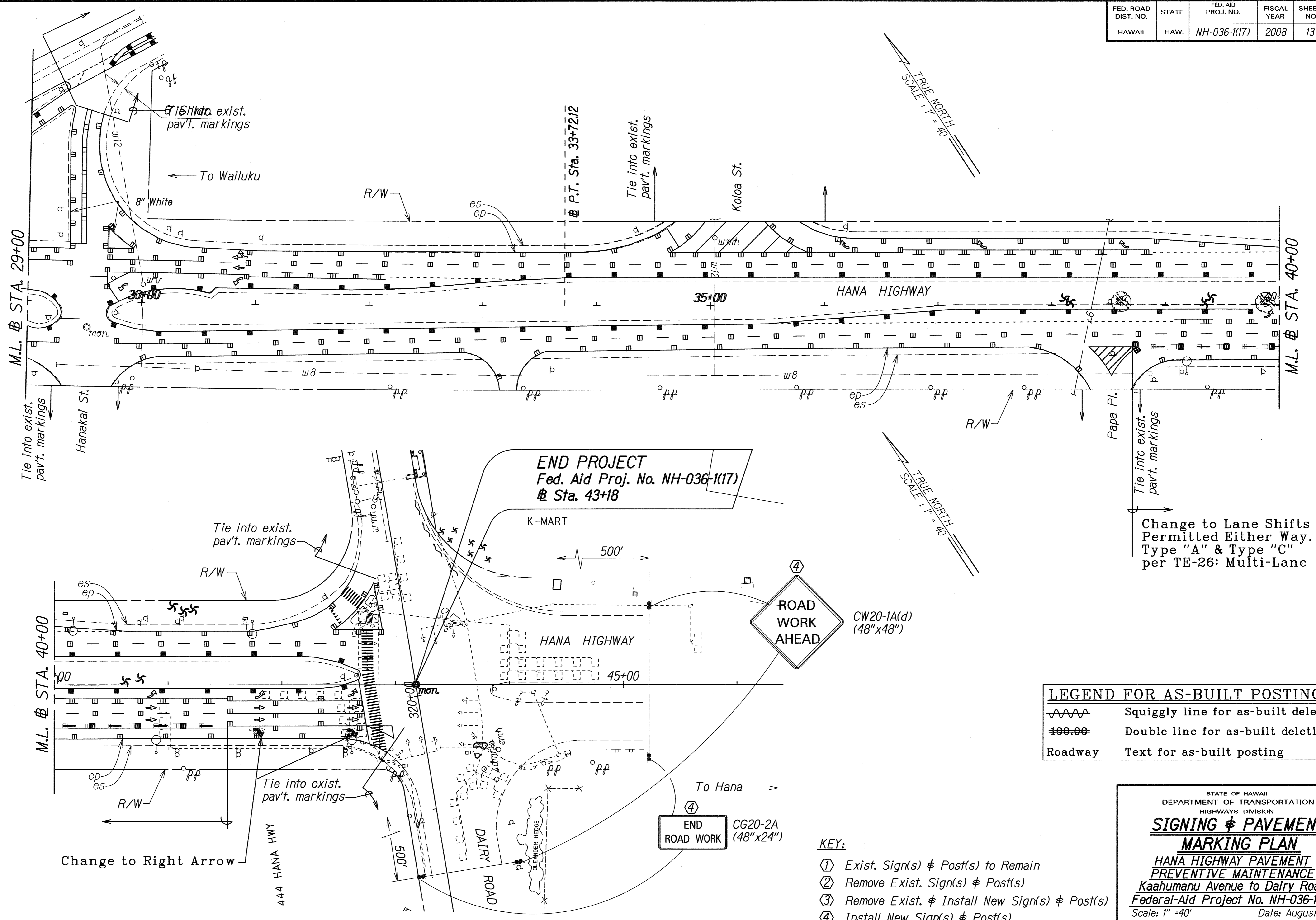
HANA HIGHWAY PAVEMENT PREVENTIVE MAINTENANCE
 Kaahumanu Avenue to Dairy Road
 Federal-Aid Project No. NH-036-1(17)
 Scale: 1" = 40' Date: August, 2008

SHEET No. 2 OF 3 SHEETS

DATE: 08/08
 SURVEY PLOTTED BY: JLB/DR
 DRAWN BY: JLB
 NOTE BOOK NO.: 10419
 DESIGNED BY: JLB/DR
 CHECKED BY: JLB/DR

"AS-BUILT"

| FED. ROAD DIST. NO. | STATE | FED. AID PROJ. NO. | FISCAL YEAR | SHEET NO. | TOTAL SHEETS |
|---------------------|-------|--------------------|-------------|-----------|--------------|
| HAWAII | HAW. | NH-036-1(17) | 2008 | 13 | 13 |



Change to Lane Shifts Permitted Either Way. Type "A" & Type "C" per TE-26: Multi-Lane

END PROJECT
Fed. Aid Proj. No. NH-036-1(17)
Sta. 43+18

ROAD WORK AHEAD
CW20-1A(d)
(48"x48")

END ROAD WORK
CG20-2A
(48"x24")

LEGEND FOR AS-BUILT POSTINGS

| | |
|---------|-------------------------------------|
| | Squiggly line for as-built deletion |
| | Double line for as-built deletion |
| Roadway | Text for as-built posting |

- KEY:**
- ① Exist. Sign(s) & Post(s) to Remain
 - ② Remove Exist. Sign(s) & Post(s)
 - ③ Remove Exist. & Install New Sign(s) & Post(s)
 - ④ Install New Sign(s) & Post(s)

STATE OF HAWAII
DEPARTMENT OF TRANSPORTATION
HIGHWAYS DIVISION

SIGNING & PAVEMENT MARKING PLAN

HANA HIGHWAY PAVEMENT PREVENTIVE MAINTENANCE
Kaahumanu Avenue to Dairy Road
Federal-Aid Project No. NH-036-1(17)
Scale: 1" = 40' Date: August, 2008

SHEET No. 3 OF 3 SHEETS

| | | |
|---------------|-------------------|------|
| ORIGINAL PLAN | SURVEY PLOTTED BY | DATE |
| NOTE BOOK | DRAWN BY | |
| DESIGNED BY | CHECKED BY | |
| CHECKED BY | | |

"AS-BUILT"