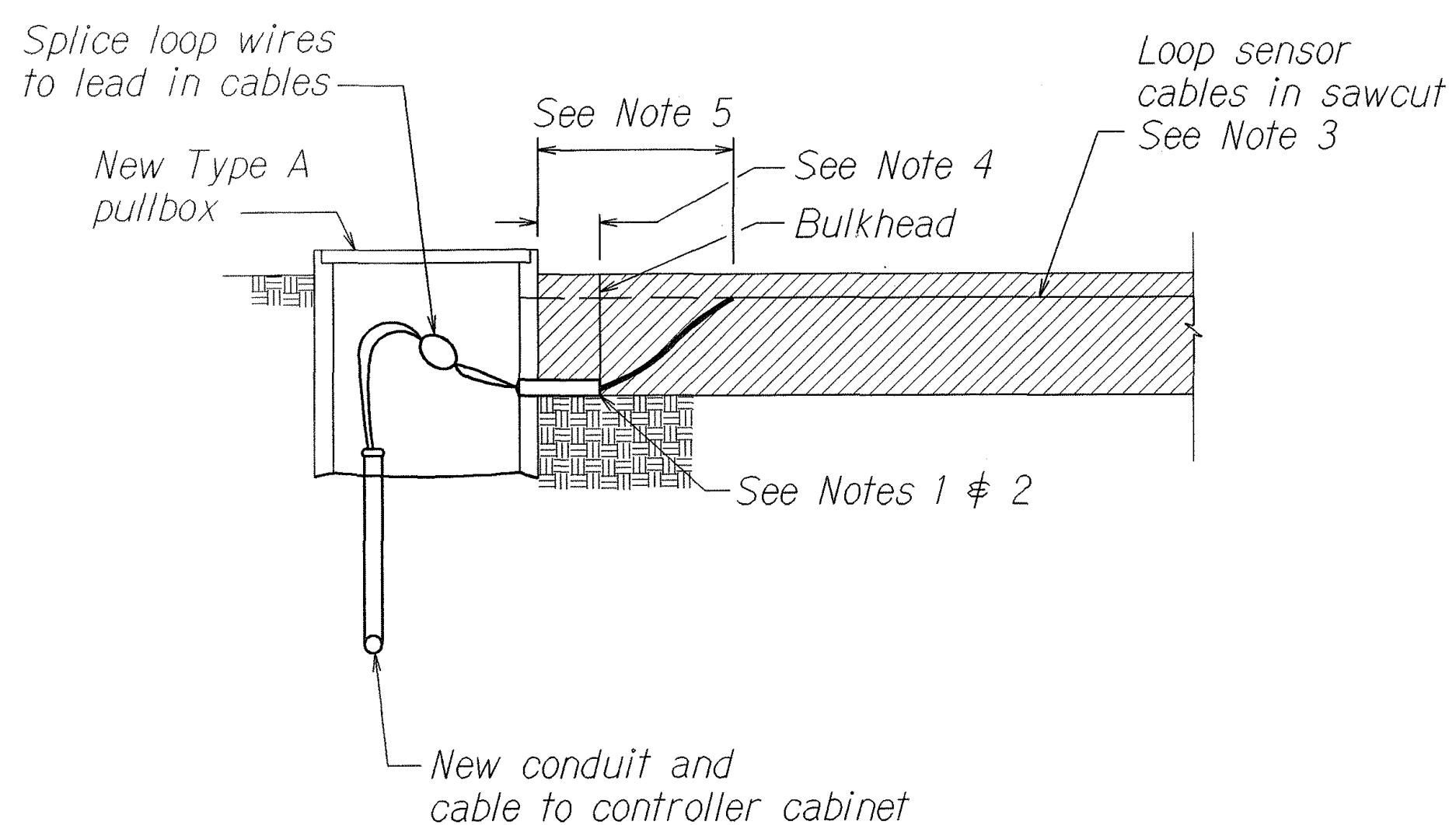
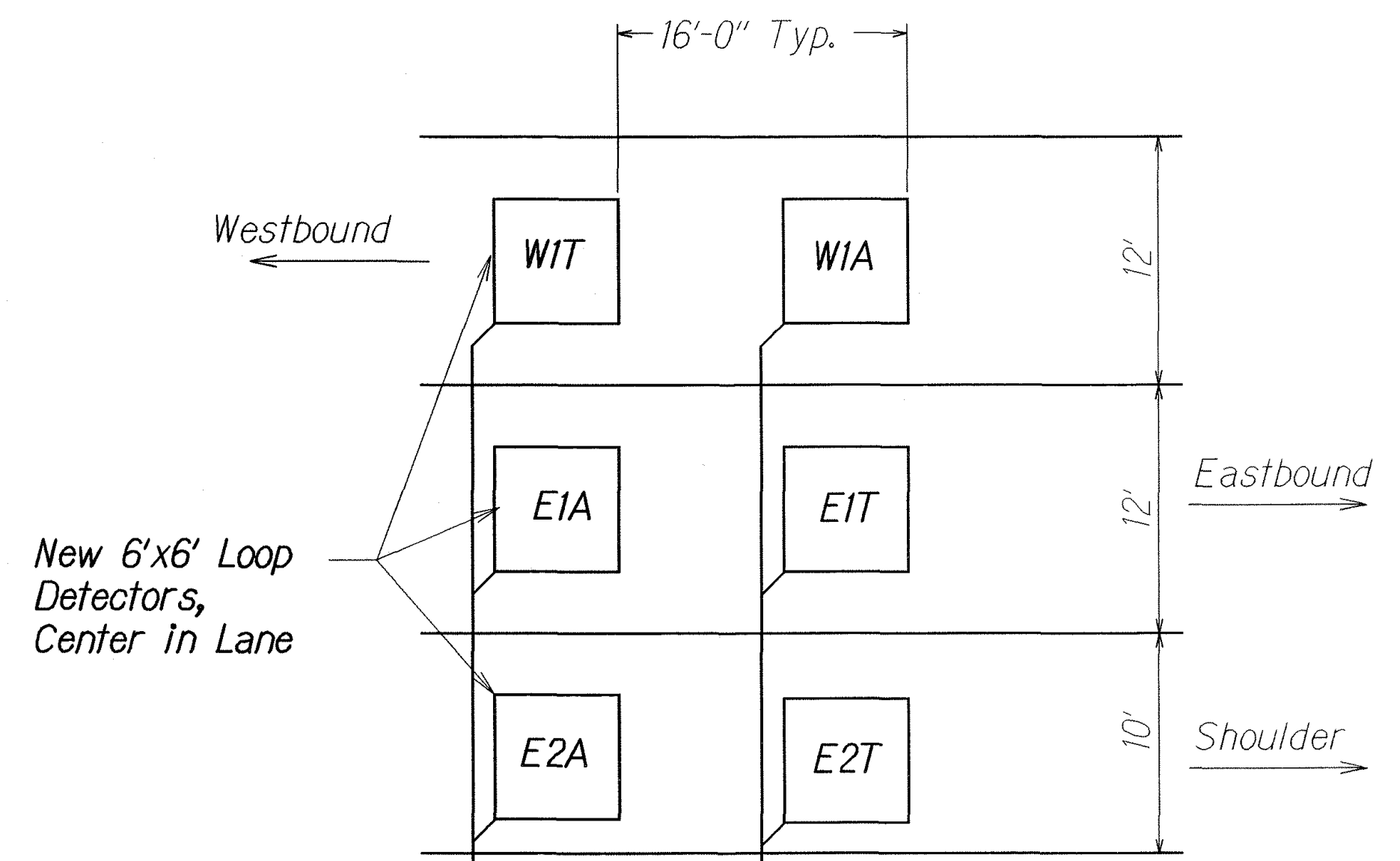
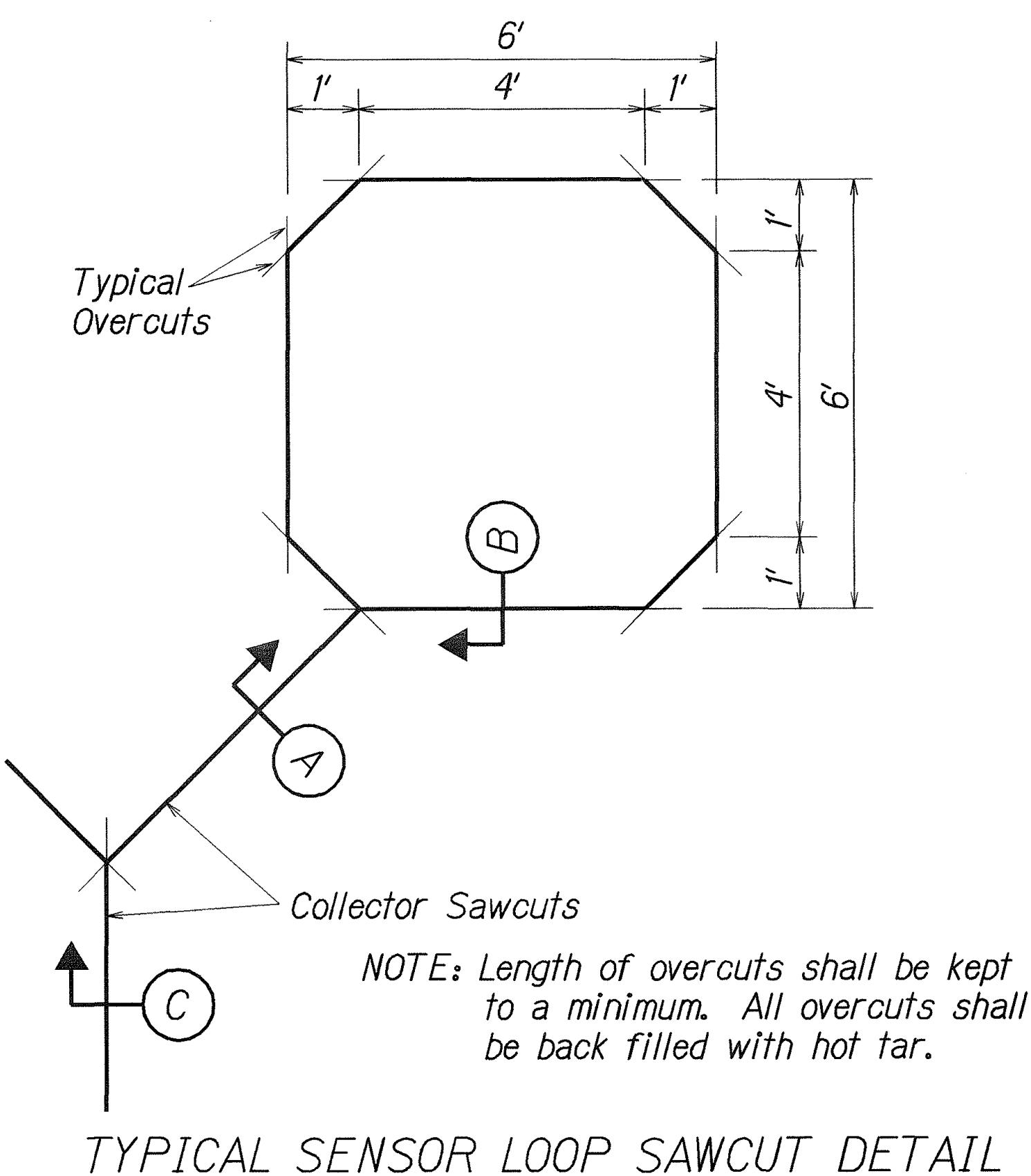
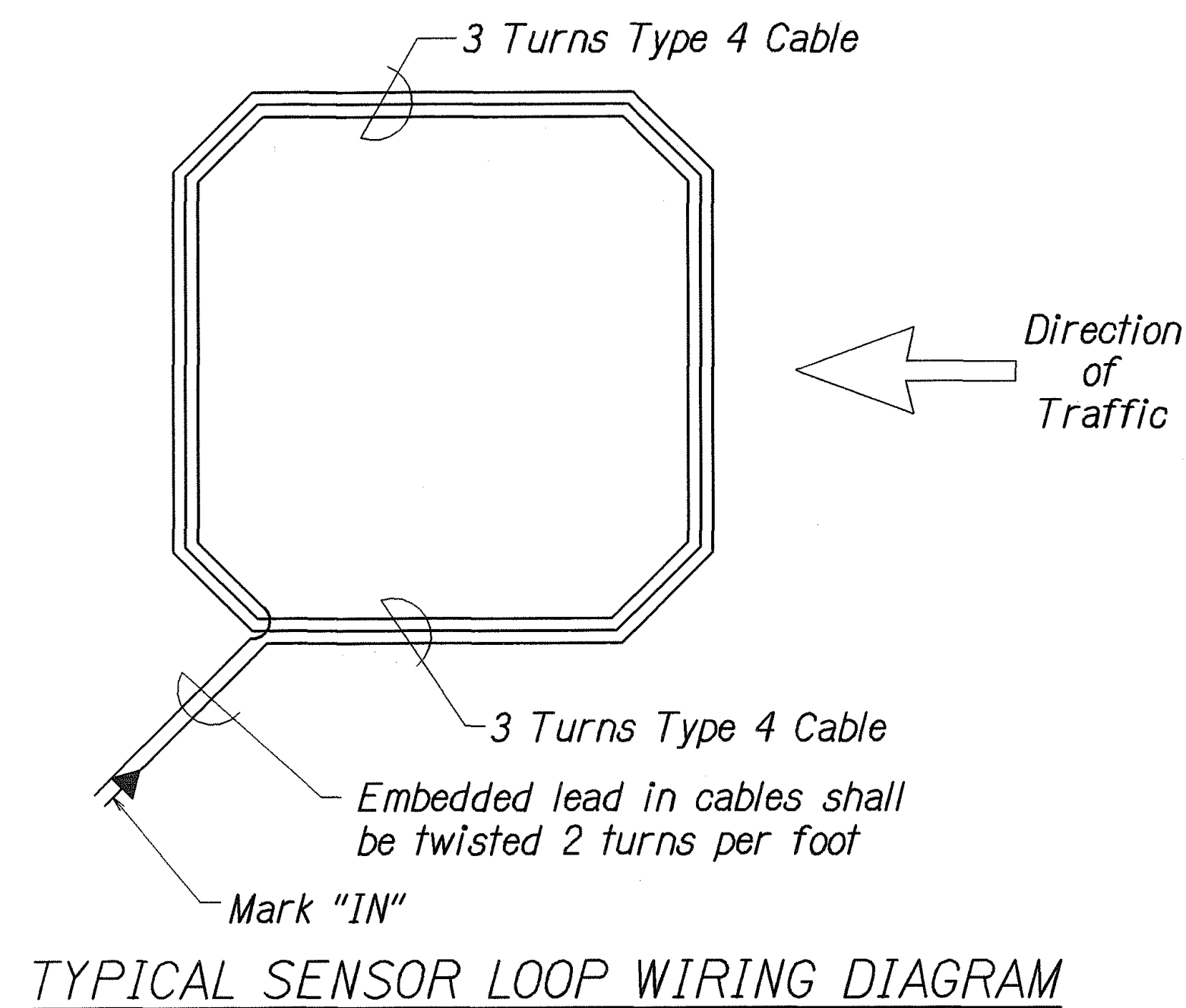
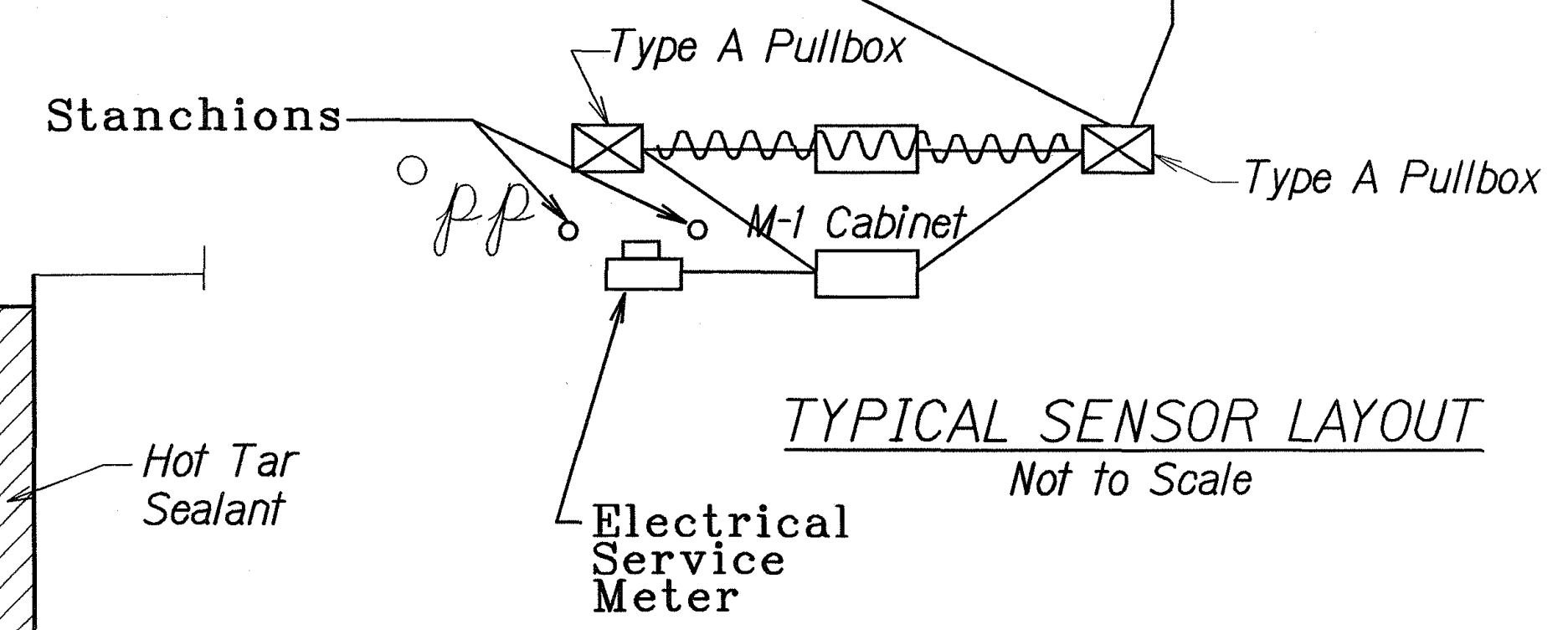
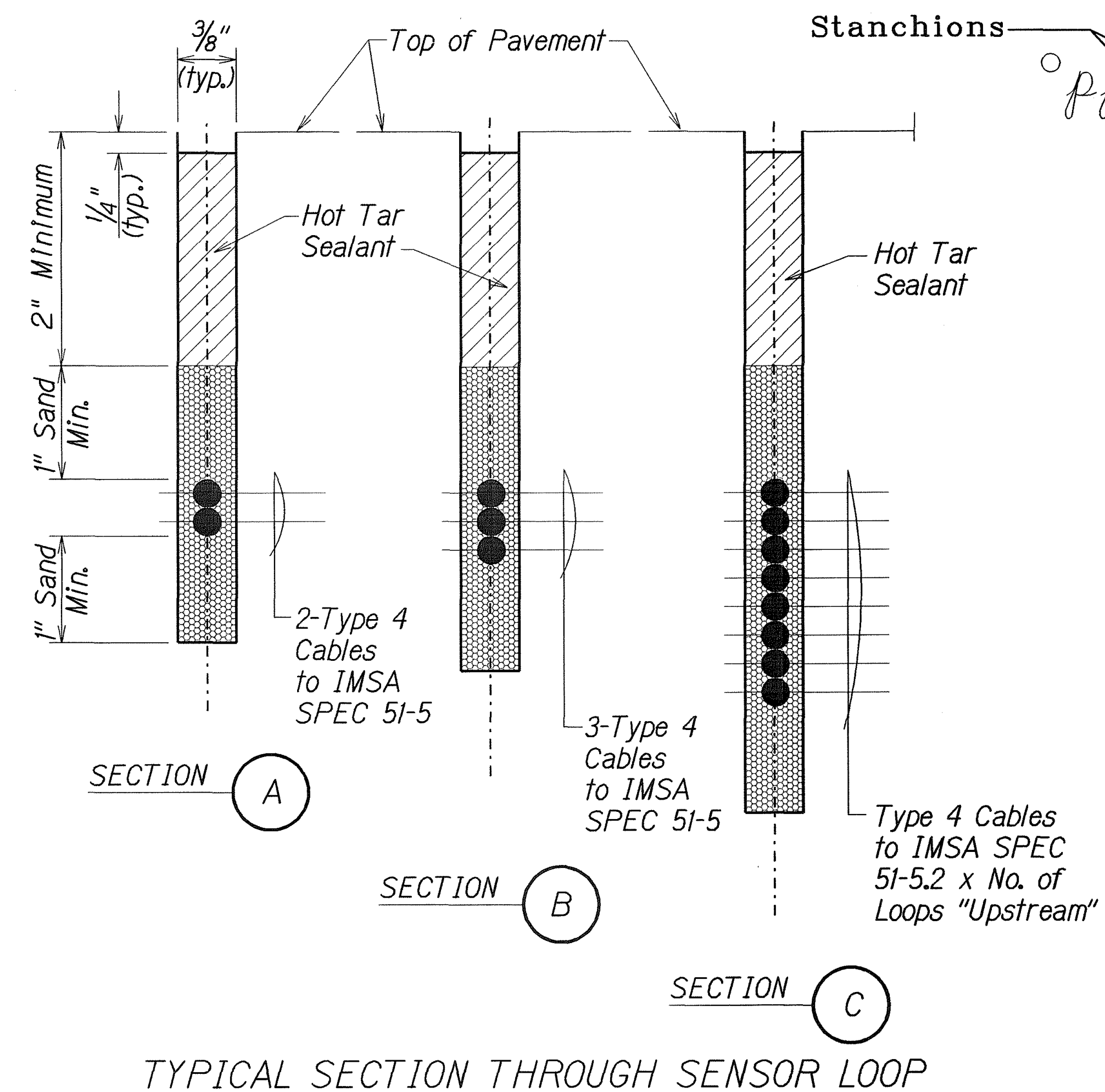


FED. ROAD DIST. NO.	STATE	PROJ. NO.	FISCAL YEAR	SHEET NO.	TOTAL SHEETS
HAWAII	HAW.	36B-02-02	2003	12	13



- NOTES ON CONSTRUCTION AT END OF SAWCUT:**
1. Seal roadway end of conduit after installation of conductors.
 2. Install bulkhead across conduit trench.
 3. Place hot applied rubberized sealant or expoxy filler in sawcut as indicated per contract.
 4. Backfill over conduit with new A.C.
 5. Where pavement extends to pullbox, continue sawcut to pullbox location and core side of pullbox for entrance of loop cables. After installation of cables, provide waterproof sealant around cable entrance.



LEGEND FOR AS-BUILT POSTINGS	
	Squiggly line for as-built deletion
	Double line for as-built deletion
	Text for as-built posting



STATE OF HAWAII
DEPARTMENT OF TRANSPORTATION
HIGHWAYS DIVISION

COUNTING STATION DETAILS
HANA HIGHWAY SHOULDER LANE
Alawai Rd. to Paia
Project No. 36B-02-02
Not to Scale
Date: Dec. 2002

SHEET No. 2 OF 2 SHEETS

ORIGINAL PLAN	DATE
DESIGNED BY	
CHECKED BY	
NOTED BY	
QUANTITIES BY	
CHECKED BY	

asbuilt2008.qhantcsd.dgn

"AS-BUILT"