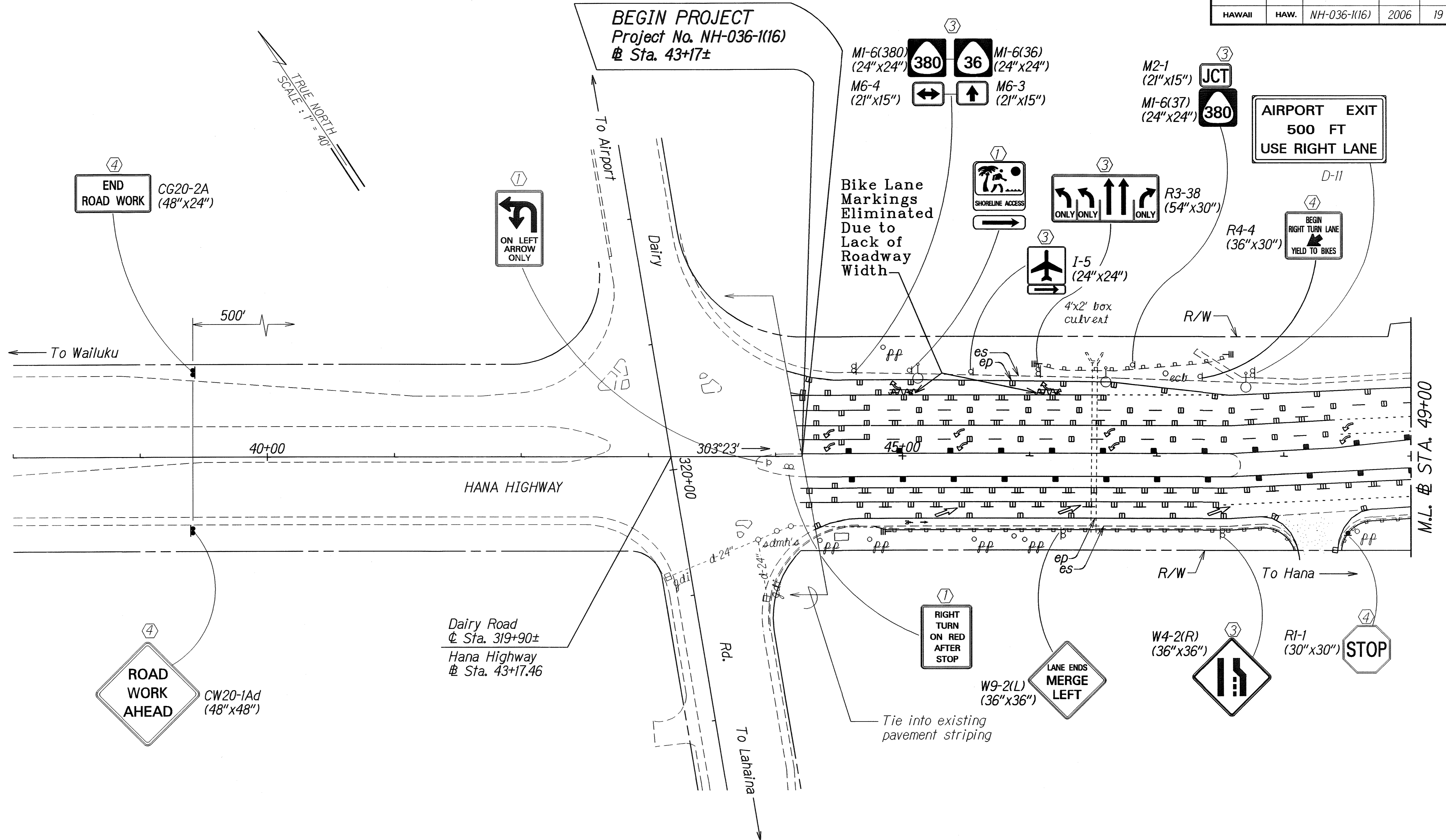


FED. ROAD DIST. NO.	STATE	FED. AID PROJ. NO.	FISCAL YEAR	SHEET NO.	TOTAL SHEETS
HAWAII	HAW.	NH-036-1(16)	2006	19	36



**SIGN LEGEND**

- ① Existing Sign(s) & Post(s) to Remain
- ② Remove Exist. Sign(s) & Post(s)
- ③ Remove Exist. & Install New Sign(s) & Post(s)
- ④ Install New Sign(s) & Post(s)
- ⑤ Remove Existing Sign(s) & Install New Sign(s) at New Location

**LEGEND FOR AS-BUILT POSTINGS**

- Squiggly line for as-built deletion
- Double line for as-built deletion
- Roadway Text for as-built posting

STATE OF HAWAII  
DEPARTMENT OF TRANSPORTATION  
HIGHWAYS DIVISION

**SIGNING & PAVEMENT MARKING PLANS**

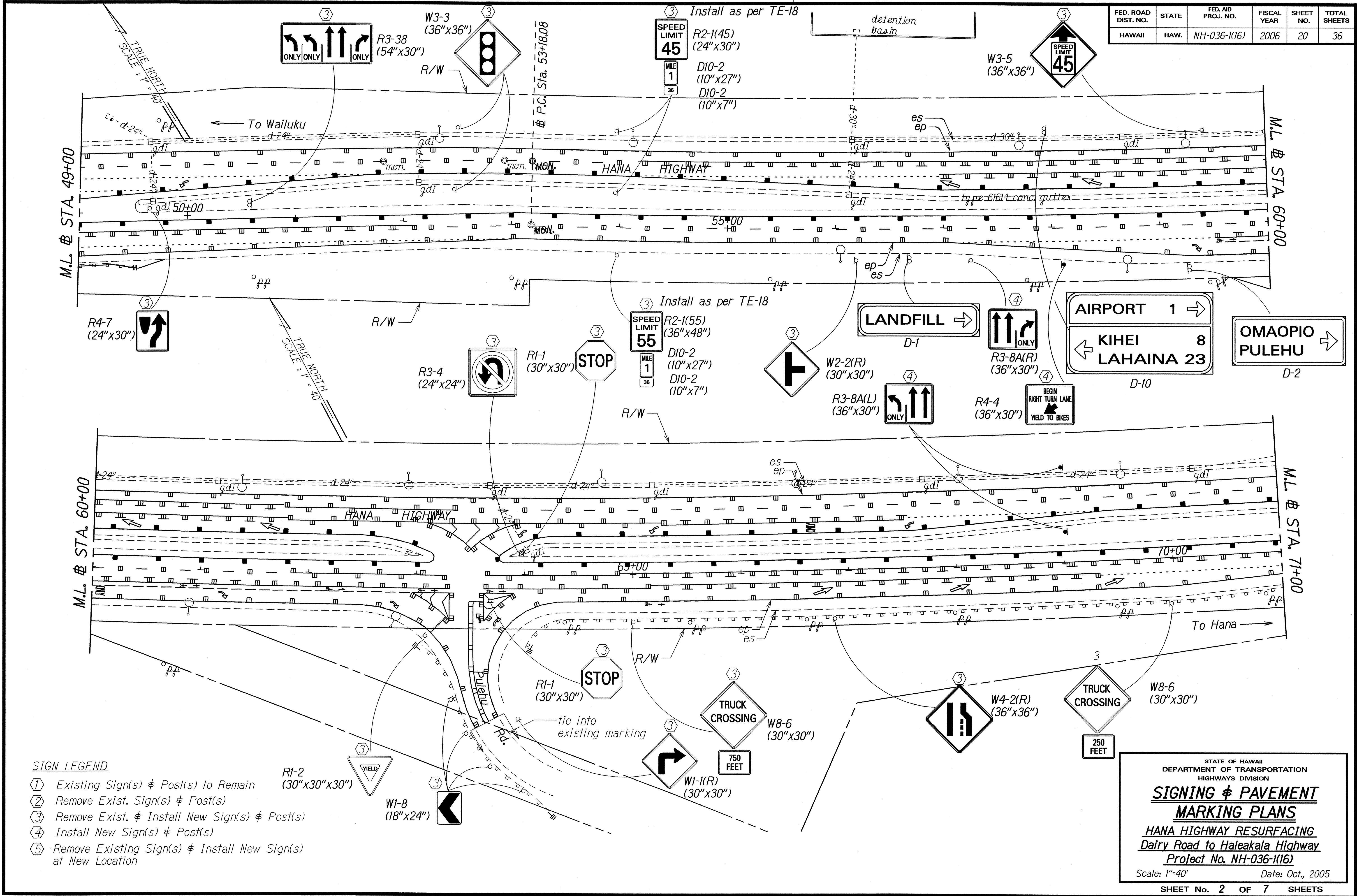
**HANA HIGHWAY RESURFACING  
Dairy Road to Haleakala Highway  
Project No. NH-036-1(16)**

Scale: 1"=40' Date: Oct., 2005

SHEET No. 1 OF 7 SHEETS

ORIGINAL PLAN	SURVEY PLOTTED BY	DATE
NOVE BOOK	DRAWN BY	
loghe, teddy	TRACED BY	
NS/hamphill	QUANTITIES BY	
	CHECKED BY	

FED. ROAD DIST. NO.	STATE	FED. AID PROJ. NO.	FISCAL YEAR	SHEET NO.	TOTAL SHEETS
HAWAII	HAW.	NH-036-1(16)	2006	20	36



- SIGN LEGEND**
- ① Existing Sign(s) & Post(s) to Remain
  - ② Remove Exist. Sign(s) & Post(s)
  - ③ Remove Exist. & Install New Sign(s) & Post(s)
  - ④ Install New Sign(s) & Post(s)
  - ⑤ Remove Existing Sign(s) & Install New Sign(s) at New Location

STATE OF HAWAII  
DEPARTMENT OF TRANSPORTATION  
HIGHWAYS DIVISION

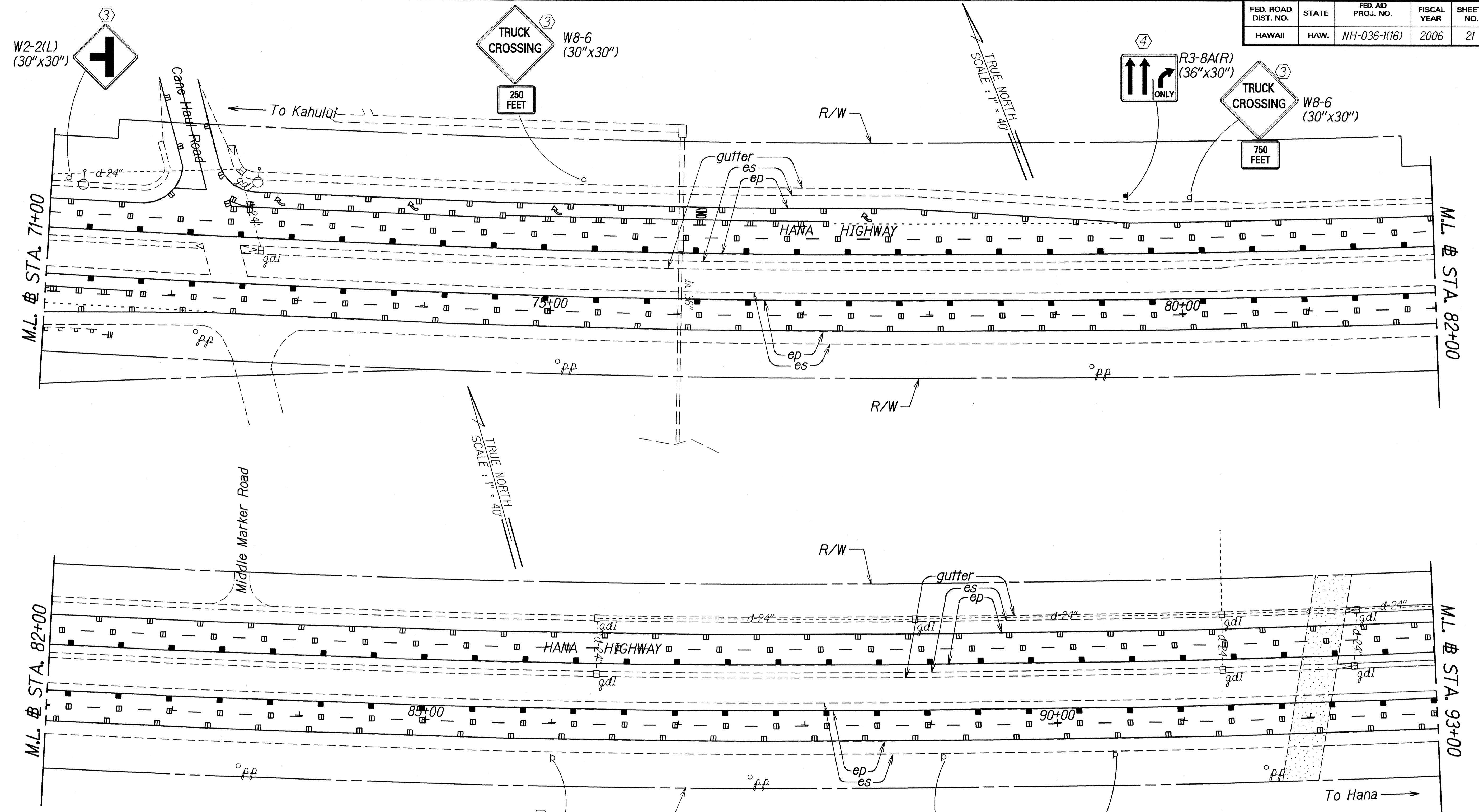
**SIGNING & PAVEMENT  
MARKING PLANS**

**HANA HIGHWAY RESURFACING  
Dairy Road to Haleakala Highway  
Project No. NH-036-1(16)**

Scale: 1"=40'      Date: Oct., 2005

SURVEY PLOTTED BY: \_\_\_\_\_ DATE: \_\_\_\_\_  
 DRAWN BY: \_\_\_\_\_  
 DESIGNED BY: \_\_\_\_\_  
 NOTE BOOK: \_\_\_\_\_  
 QUANTITIES BY: \_\_\_\_\_  
 CHECKED BY: \_\_\_\_\_

FED. ROAD DIST. NO.	STATE	FED. AID PROJ. NO.	FISCAL YEAR	SHEET NO.	TOTAL SHEETS
HAWAII	HAW.	NH-036-1(16)	2006	21	36



- SIGN LEGEND**
- ① Existing Sign(s) & Post(s) to Remain
  - ② Remove Exist. Sign(s) & Post(s)
  - ③ Remove Exist. & Install New Sign(s) & Post(s)
  - ④ Install New Sign(s) & Post(s)
  - ⑤ Remove Existing Sign(s) & Install New Sign(s) at New Location

DATE	21.0.05
SURVEY PLOTTED BY	
DRAWN BY	
NOTE BOOK DISMISSED BY	
QUANTITIES BY	
CHECKED BY	

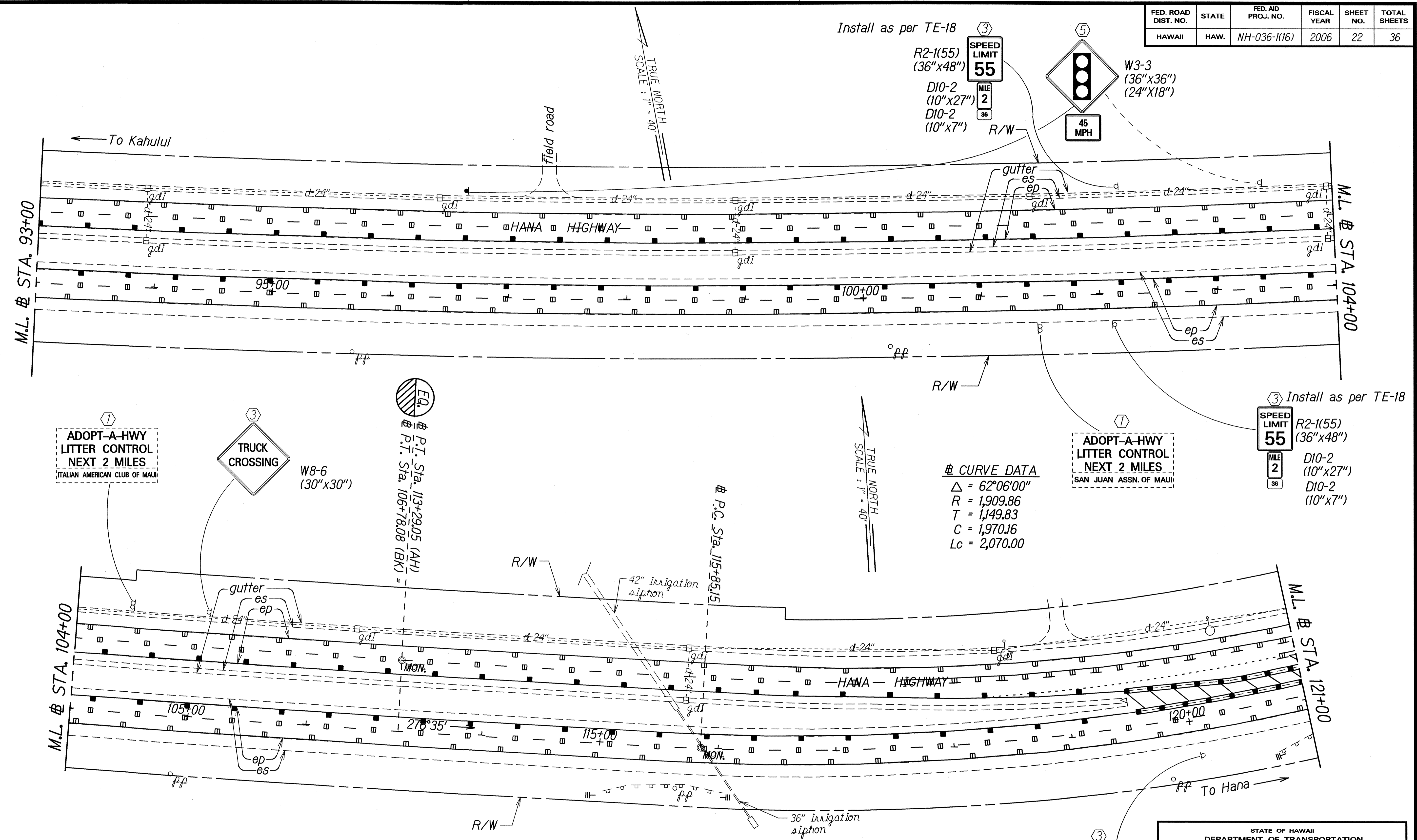
STATE OF HAWAII  
DEPARTMENT OF TRANSPORTATION  
HIGHWAYS DIVISION

**SIGNING & PAVEMENT  
MARKING PLANS**

**HANA HIGHWAY RESURFACING  
Dairy Road to Haleakala Highway  
Project No. NH-036-1(16)**

Scale: 1"=40'      Date: Oct., 2005

FED. ROAD DIST. NO.	STATE	FED. AID PROJ. NO.	FISCAL YEAR	SHEET NO.	TOTAL SHEETS
HAWAII	HAW.	NH-036-1(16)	2006	22	36



ADOPT-A-HWY  
LITTER CONTROL  
NEXT 2 MILES  
ITALIAN AMERICAN CLUB OF MAUI

TRUCK CROSSING  
W8-6  
(30"x30")

P.T. Sta. 113+29.05 (AH)  
P.T. Sta. 106+78.08 (BK)

CURVE DATA  
 $\Delta = 62^{\circ}06'00''$   
 $R = 1,909.86$   
 $T = 1,149.83$   
 $C = 1,970.16$   
 $Lc = 2,070.00$

ADOPT-A-HWY  
LITTER CONTROL  
NEXT 2 MILES  
SAN JUAN ASSN. OF MAUI

W1-10(L)  
(36"x36")

SIGN LEGEND

- ① Existing Sign(s) & Post(s) to Remain
- ② Remove Exist. Sign(s) & Post(s)
- ③ Remove Exist. & Install New Sign(s) & Post(s)
- ④ Install New Sign(s) & Post(s)
- ⑤ Remove Existing Sign(s) & Install New Sign(s) at New Location

STATE OF HAWAII  
DEPARTMENT OF TRANSPORTATION  
HIGHWAYS DIVISION

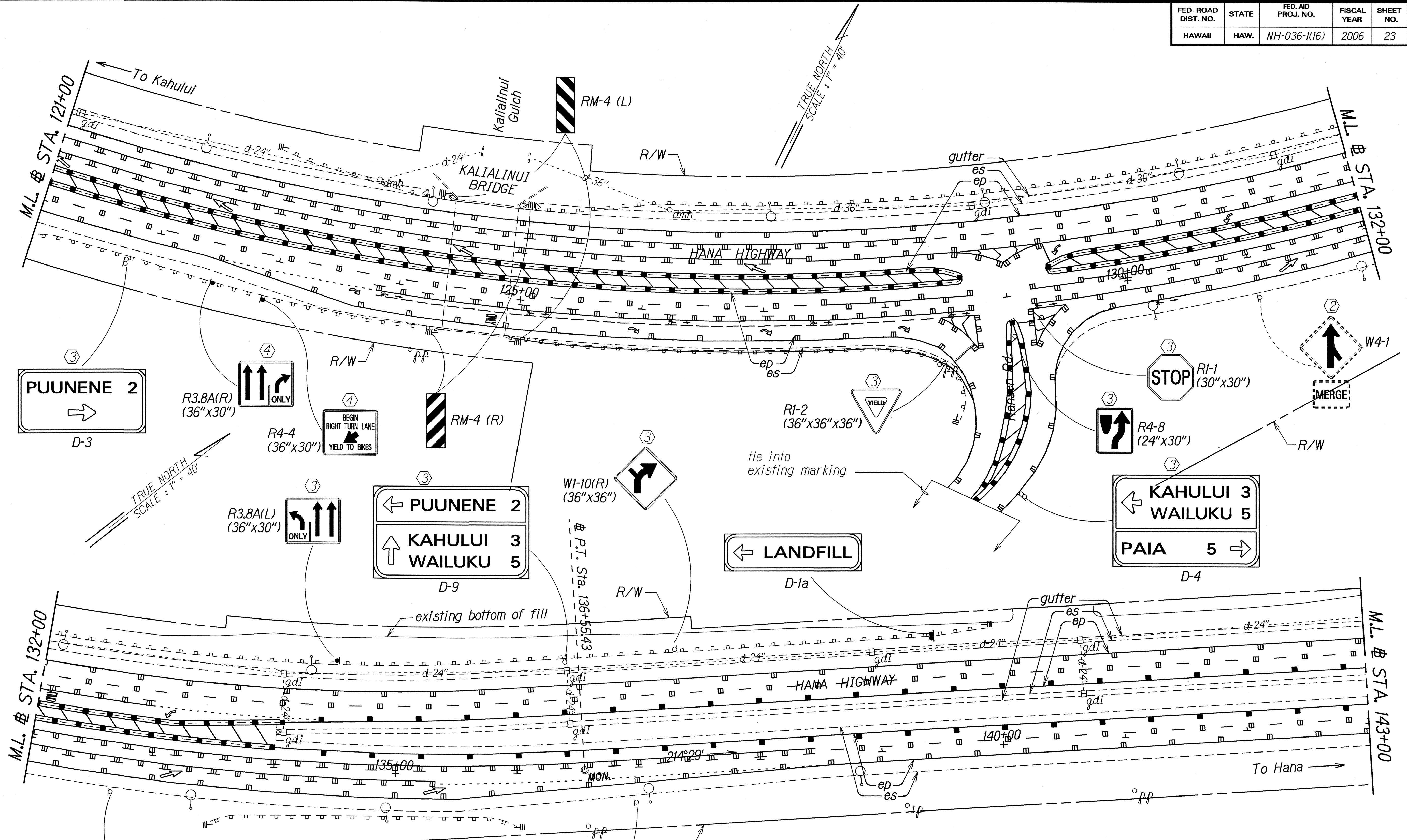
**SIGNING & PAVEMENT  
MARKING PLANS**

**HANA HIGHWAY RESURFACING**  
Dairy Road to Haleakala Highway  
Project No. NH-036-1(16)

Scale: 1"=40'      Date: Oct., 2005

SURVEY PLOTTED BY	DATE
DRAWN BY	AUG. 2002
CHECKED BY	
DESIGNED BY	
QUANTITIES BY	
NOTE BOOK	
LOGIN: feidy	
SA@hawaii.gov	

FED. ROAD DIST. NO.	STATE	FED. AID PROJ. NO.	FISCAL YEAR	SHEET NO.	TOTAL SHEETS
HAWAII	HAW.	NH-036-1(16)	2006	23	36



DATE	10/01/05
SURVEY PLOTTED BY	
DRAWN BY	
DESIGNED BY	
NOTED BY	
QUANTITIES BY	
CHECKED BY	

- SIGN LEGEND**
- ① Existing Sign(s) & Post(s) to Remain
  - ② Remove Exist. Sign(s) & Post(s)
  - ③ Remove Exist. & Install New Sign(s) & Post(s)
  - ④ Install New Sign(s) & Post(s)
  - ⑤ Remove Existing Sign(s) & Install New Sign(s) at New Location

STATE OF HAWAII  
DEPARTMENT OF TRANSPORTATION  
HIGHWAYS DIVISION

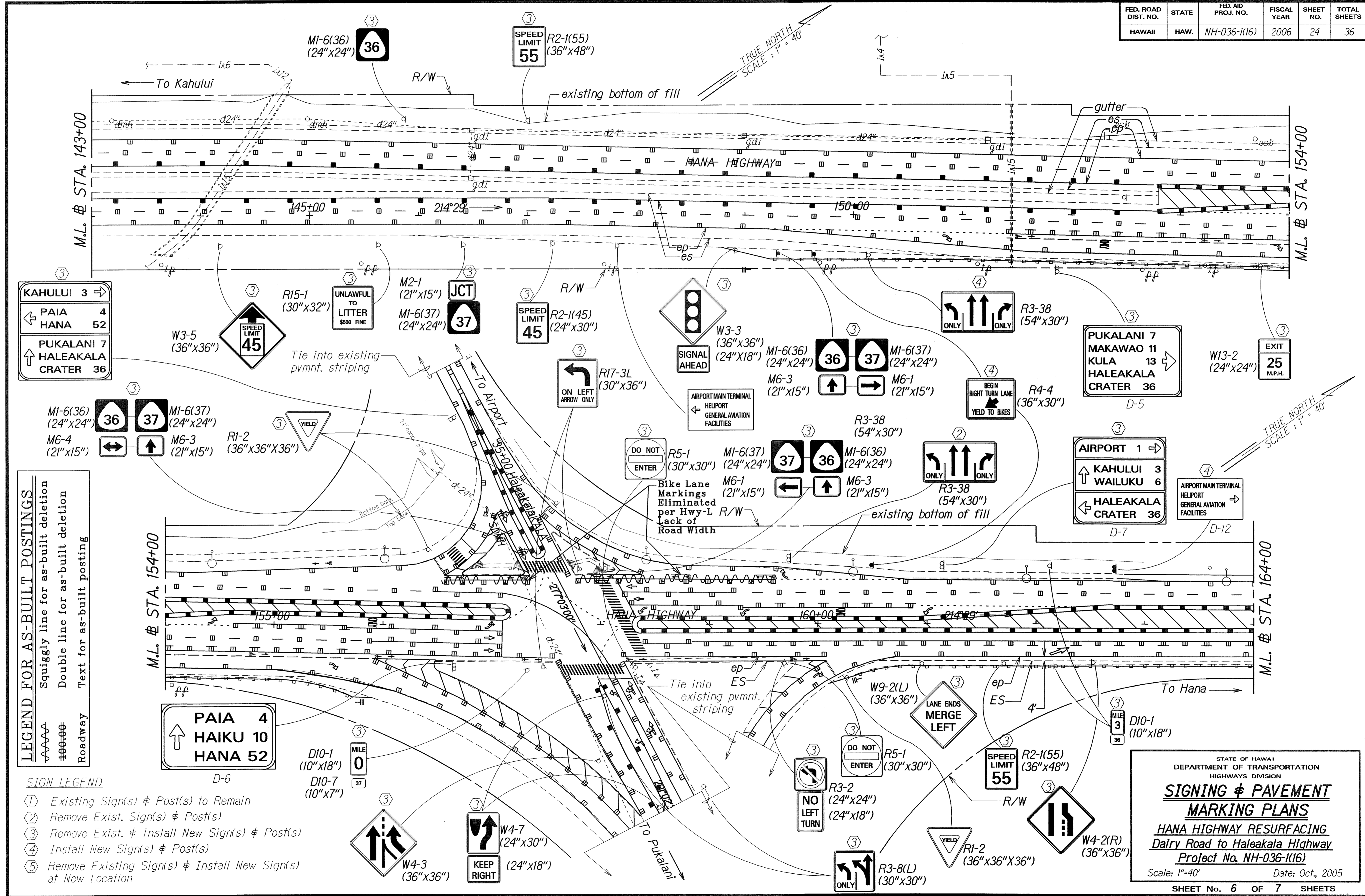
**SIGNING & PAVEMENT  
MARKING PLANS**

**HANA HIGHWAY RESURFACING**  
Dairy Road to Haleakala Highway  
Project No. NH-036-1(16)

Scale: 1"=40'      Date: Oct., 2005

SHEET No. 5 OF 7 SHEETS

FED. ROAD DIST. NO.	STATE	FED. AID PROJ. NO.	FISCAL YEAR	SHEET NO.	TOTAL SHEETS
HAWAII	HAW.	NH-036-1(16)	2006	24	36



**LEGEND FOR AS-BUILT POSTINGS**

Squiggly line for as-built deletion  
 Double line for as-built deletion  
 Text for as-built posting  
 Roadway

**SIGN LEGEND**

- ① Existing Sign(s) & Post(s) to Remain
- ② Remove Exist. Sign(s) & Post(s)
- ③ Remove Exist. & Install New Sign(s) & Post(s)
- ④ Install New Sign(s) & Post(s)
- ⑤ Remove Existing Sign(s) & Install New Sign(s) at New Location

DESIGNED BY	DATE
DRAWN BY	2005
TRACED BY	
DESIGNED BY	
QUANTITIES BY	
CHECKED BY	

STATE OF HAWAII  
 DEPARTMENT OF TRANSPORTATION  
 HIGHWAYS DIVISION

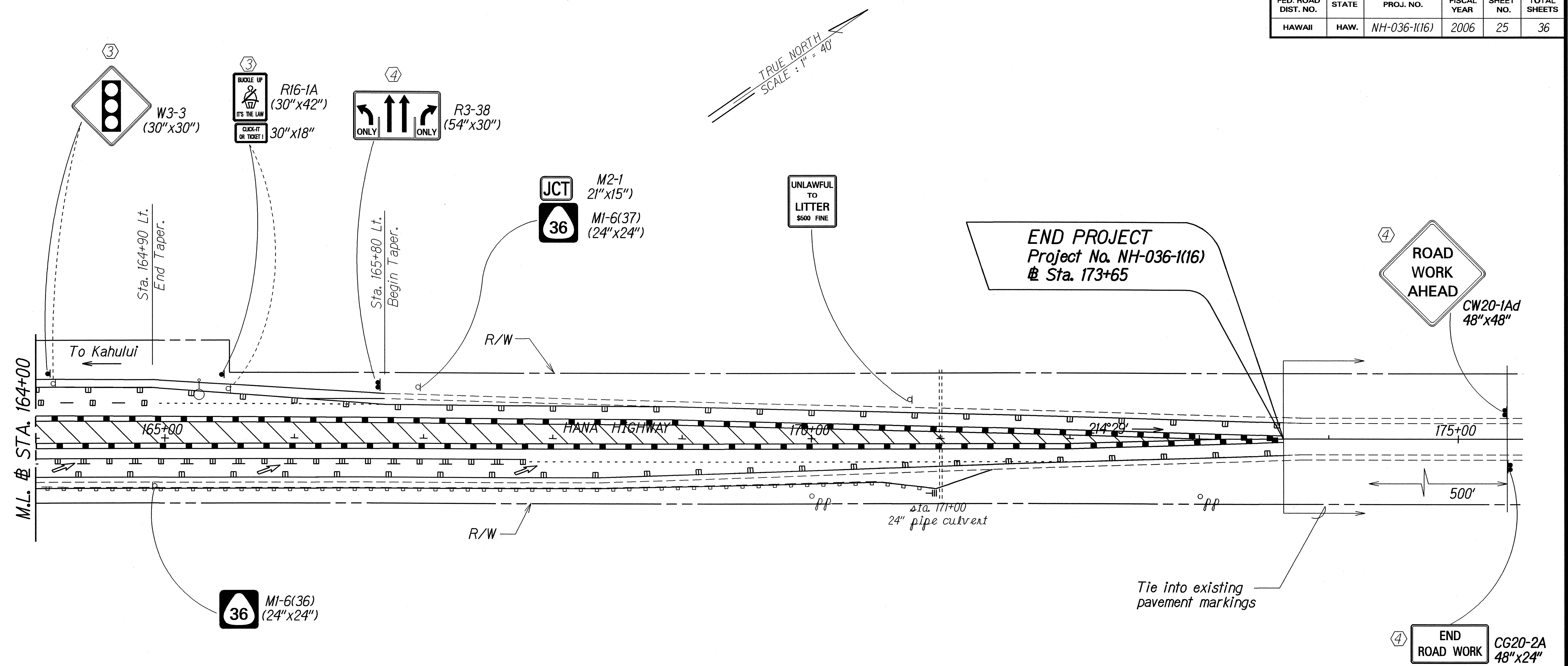
**SIGNING & PAVEMENT MARKING PLANS**

HANA HIGHWAY RESURFACING  
 Dairy Road to Haleakala Highway  
 Project No. NH-036-1(16)

Scale: 1"=40' Date: Oct., 2005

SHEET No. 6 OF 7 SHEETS

FED. ROAD DIST. NO.	STATE	FED. AID PROJ. NO.	FISCAL YEAR	SHEET NO.	TOTAL SHEETS
HAWAII	HAW.	NH-036-1(16)	2006	25	36



TRUE NORTH  
SCALE: 1" = 40'

**SIGN LEGEND**

- ① Existing Sign(s) & Post(s) to Remain
- ② Remove Exist. Sign(s) & Post(s)
- ③ Remove Exist. & Install New Sign(s) & Post(s)
- ④ Install New Sign(s) & Post(s)
- ⑤ Remove Existing Sign(s) & Install New Sign(s) at New Location

ORIGINAL PLAN	SURVEY PLOTTED BY	DATE
	DRAWN BY	
	DESIGNED BY	
	NOTE BOOK	
	QUANTITIES BY	
	CHECKED BY	

STATE OF HAWAII  
DEPARTMENT OF TRANSPORTATION  
HIGHWAYS DIVISION

**SIGNING & PAVEMENT MARKING PLANS**

**HANA HIGHWAY RESURFACING**  
Dairy Road to Haleakala Highway  
Project No. NH-036-1(16)

Scale: 1"=40'      Date: Oct., 2005

SHEET No. 7 OF 7 SHEETS