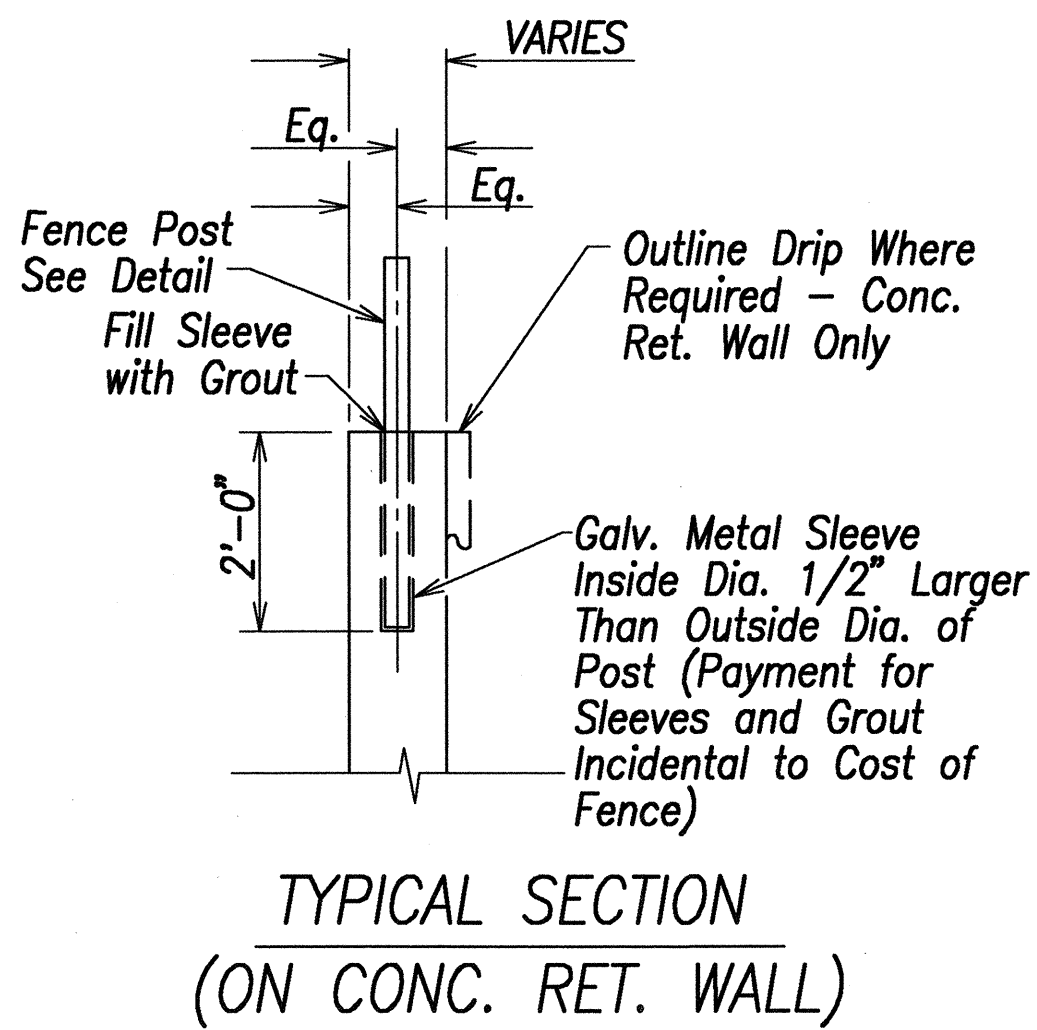
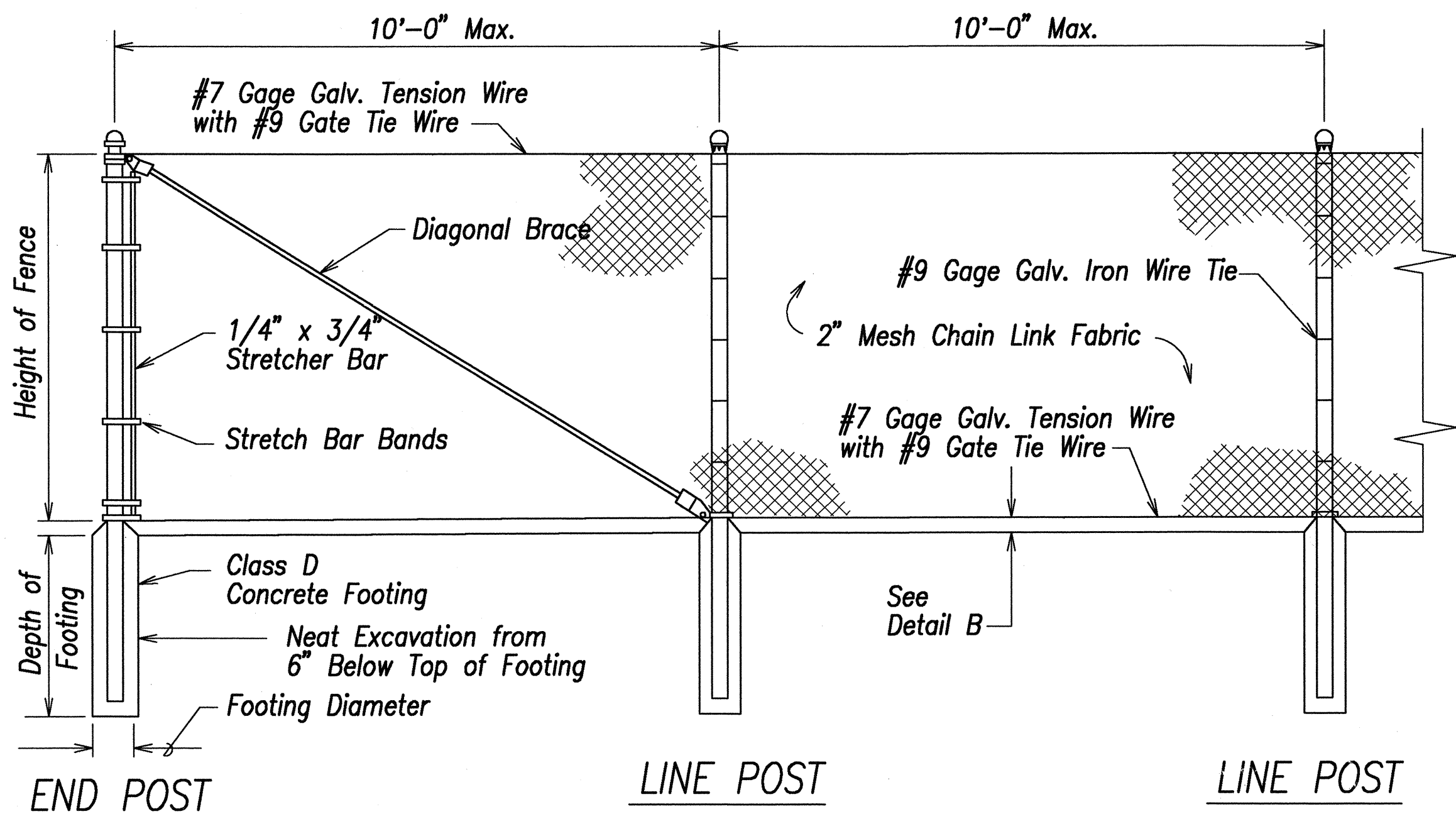
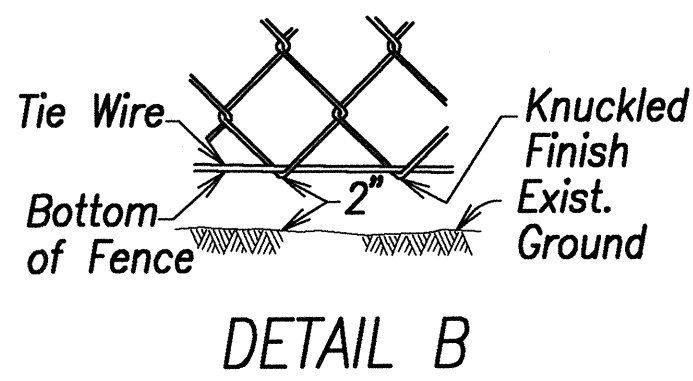
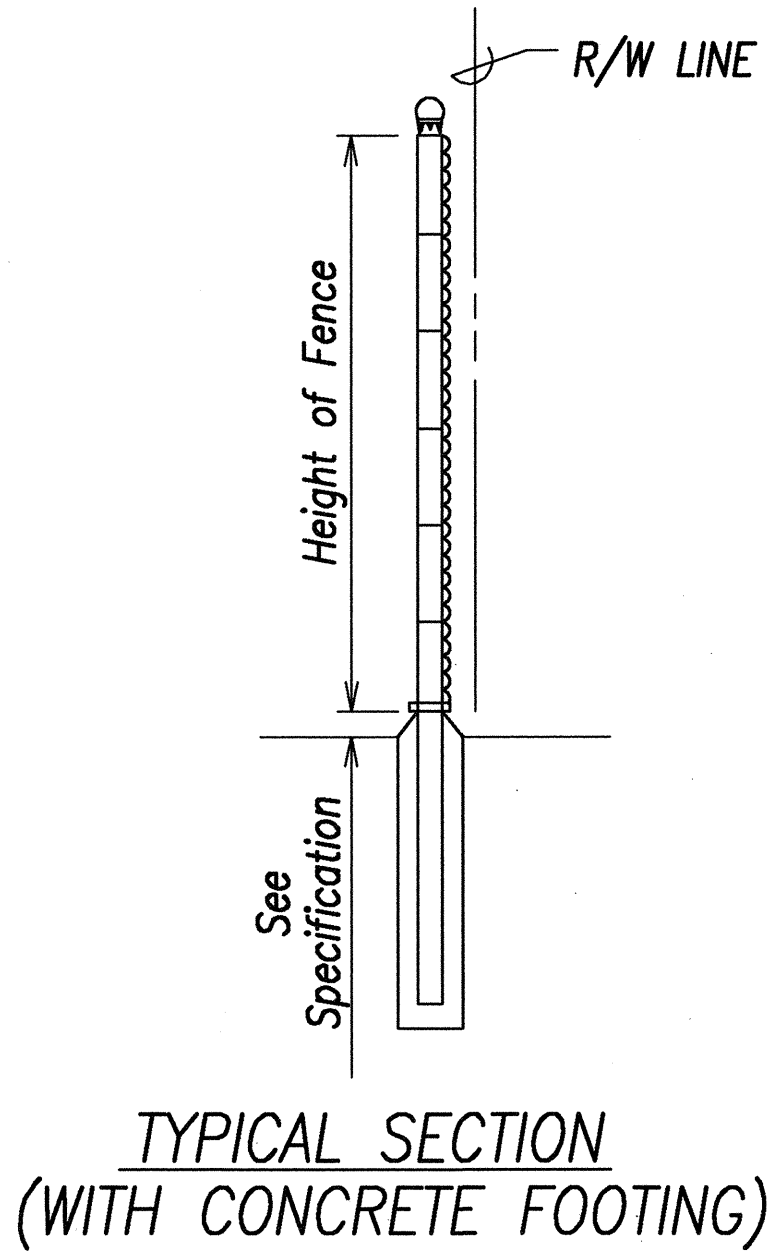
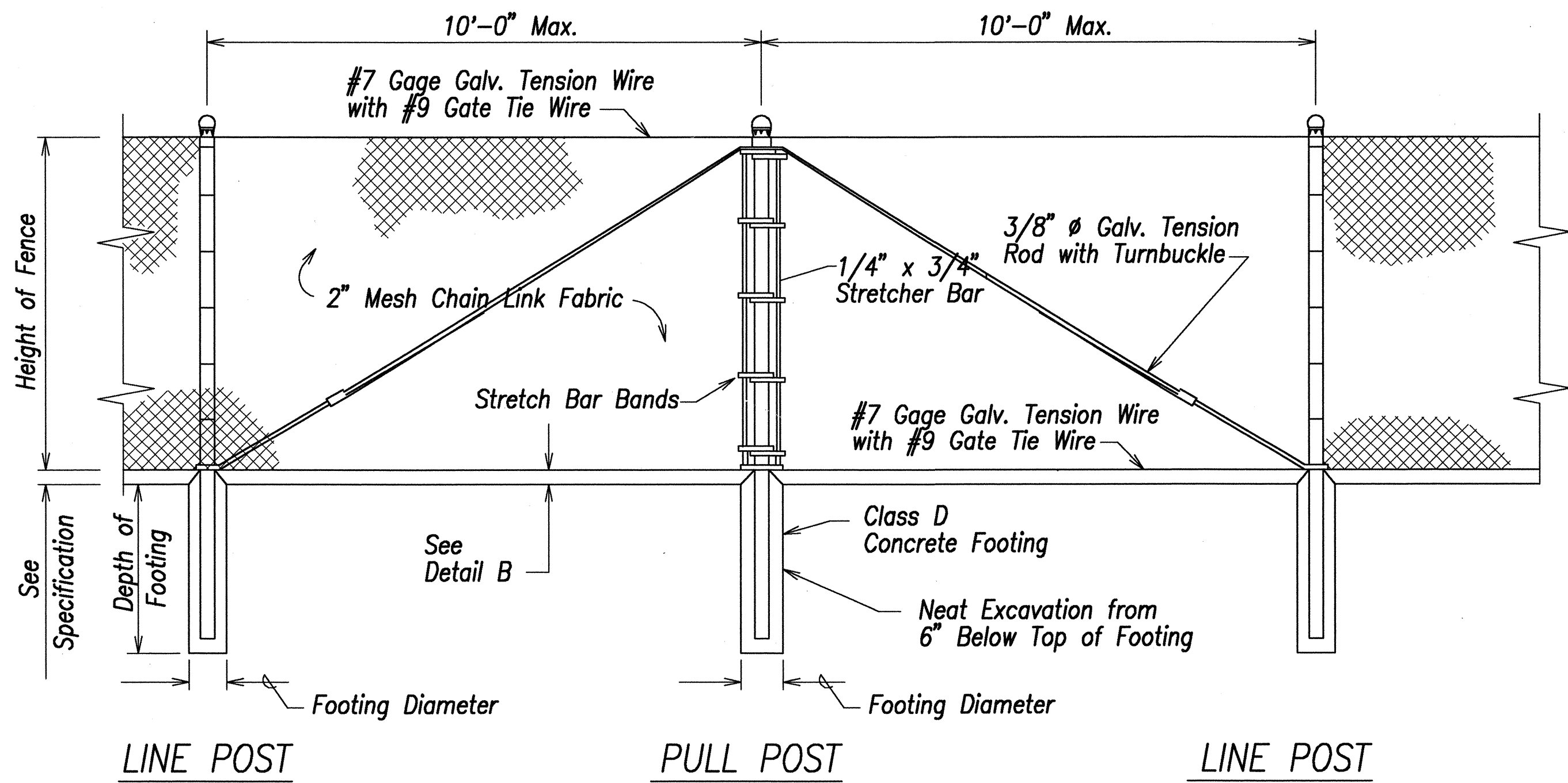


FED. ROAD DIST. NO.	STATE	FED. AID PROJ. NO.	FISCAL YEAR	SHEET NO.	TOTAL SHEETS
HAWAII	HAW.	BR-036-1(15)	2000	24	89

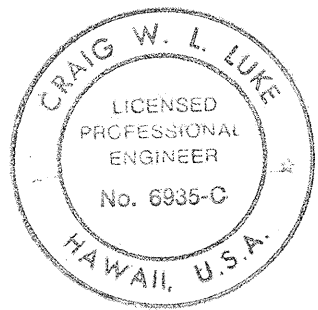


NOTE:
Tension wire shall have a minimum of two ounces of galvanizing per square foot.

Height of Fence	Minimum Depth of Footing		Minimum Footing Diameter	
	Line Post	Corner, Pull, and End Posts	Line Post	Corner, Pull and End Posts
3'	2'-0"	2'-6"	8"	8"
4'	2'-6"	3'-0"	8"	8"
5'	3'-0"	3'-0"	8"	8"
6'	3'-0"	3'-0"	8"	9"

CHAIN LINK FENCE DETAILS

DESIGNED BY	DATE
CHECKED BY	
NOTED BY	
QUANTITIES BY	
DESIGNED BY	
CHECKED BY	
NOTED BY	
QUANTITIES BY	
DESIGNED BY	
CHECKED BY	
NOTED BY	
QUANTITIES BY	



THIS WORK WAS PREPARED BY ME OR UNDER MY SUPERVISION.

DATE 7/14/00

STATE OF HAWAII
DEPARTMENT OF TRANSPORTATION
HIGHWAYS DIVISION
**CHAIN LINK FENCE
WITHOUT TOPRAIL**
HANA HIGHWAY
REPLACEMENT OF KAUPAKULUA BRIDGE
AND APPROACHES
F.A.P. Proj. No. BR-036-1(15)
Scale: As Shown Date: June 30, 2000

SHEET No. C-22 OF 89 SHEETS