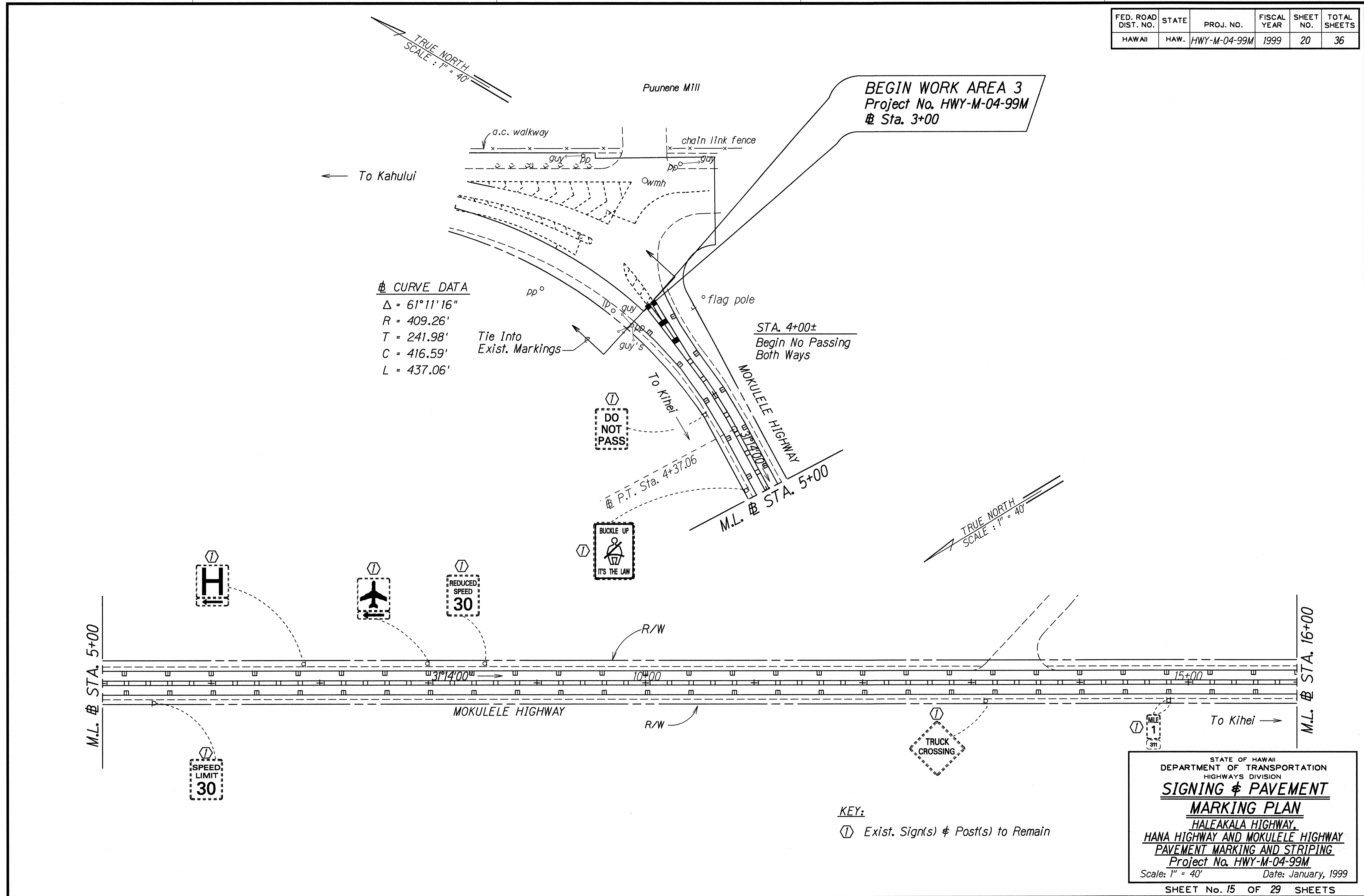


FED. ROAD DIST. NO.	STATE	PROJ. NO.	FISCAL YEAR	SHEET NO.	TOTAL SHEETS
HAWAII	HAW.	HWY-M-04-99M	1999	20	36



DATE: Dec. 1998

SURVEY PLATTED BY: \_\_\_\_\_

DRAWN BY: \_\_\_\_\_

NOTE BOOK: \_\_\_\_\_

QUANTITIES BY: \_\_\_\_\_

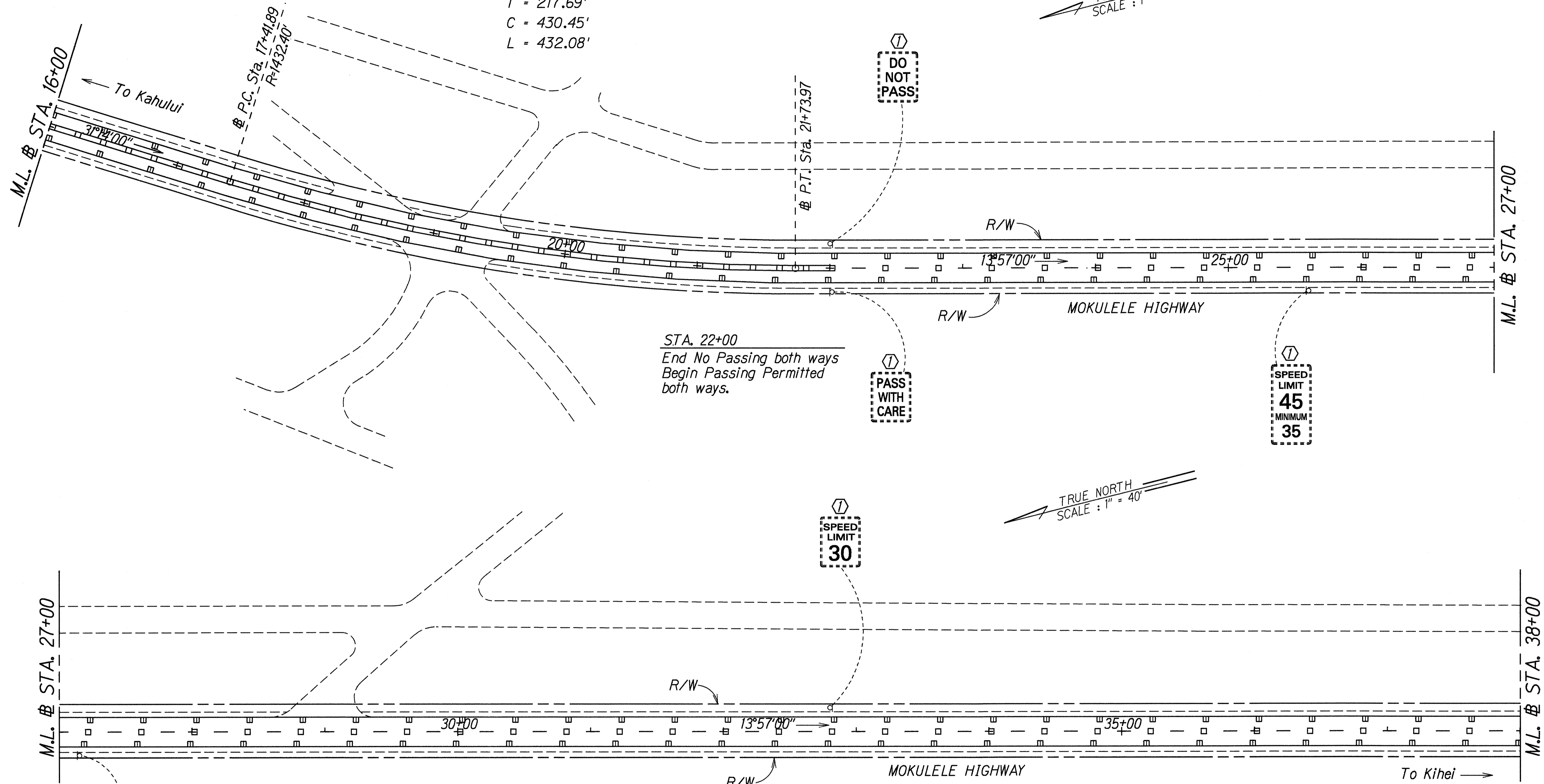
CHECKED BY: \_\_\_\_\_

FED. ROAD DIST. NO.	STATE	PROJ. NO.	FISCAL YEAR	SHEET NO.	TOTAL SHEETS
HAWAII	HAW.	HWY-M-04-99M	1999	21	36

**⊕ CURVE DATA**

$\Delta = 17^{\circ}17'00''$   
 $R = 1432.40'$   
 $T = 217.69'$   
 $C = 430.45'$   
 $L = 432.08'$

TRUE NORTH  
SCALE : 1" = 40'



STA. 22+00  
 End No Passing both ways  
 Begin Passing Permitted  
 both ways.

Ⓛ DO NOT PASS

Ⓛ PASS WITH CARE

Ⓛ SPEED LIMIT 45 MINIMUM 35

Ⓛ SPEED LIMIT 30

TRUE NORTH  
SCALE : 1" = 40'

Ⓛ DRY AREA PREVENT FIRE

**KEY:**

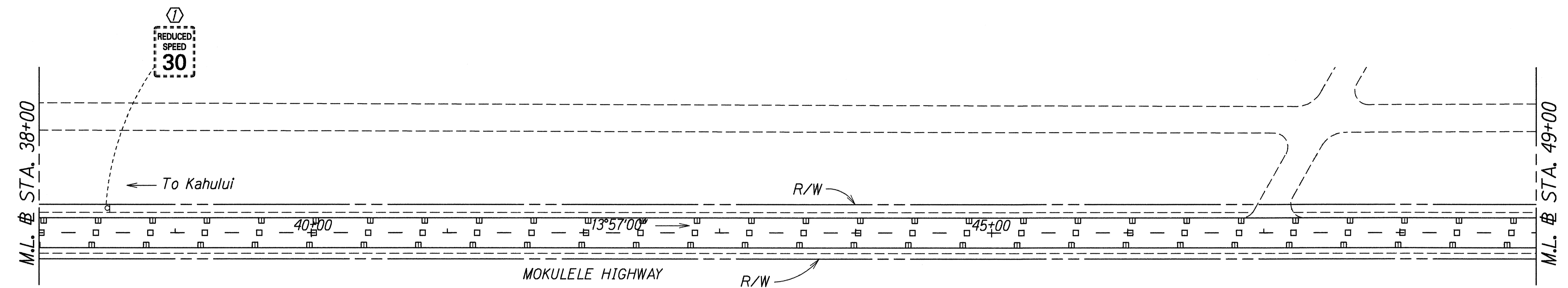
Ⓛ Exist. Sign(s) & Post(s) to Remain

SURVEY PLOTTED BY	DATE
DRAWN BY	Dec. 1998
TRACED BY	
NOTE BOOK	
ORGANIZED BY	
CHECKED BY	

STATE OF HAWAII  
 DEPARTMENT OF TRANSPORTATION  
 HIGHWAYS DIVISION  
**SIGNING & PAVEMENT MARKING PLAN**  
 HALEAKALA HIGHWAY,  
 HANA HIGHWAY AND MOKULELE HIGHWAY  
 PAVEMENT MARKING AND STRIPING  
 Project No. HWY-M-04-99M  
 Scale: 1" = 40' Date: January, 1999  
 SHEET No. 16 OF 29 SHEETS

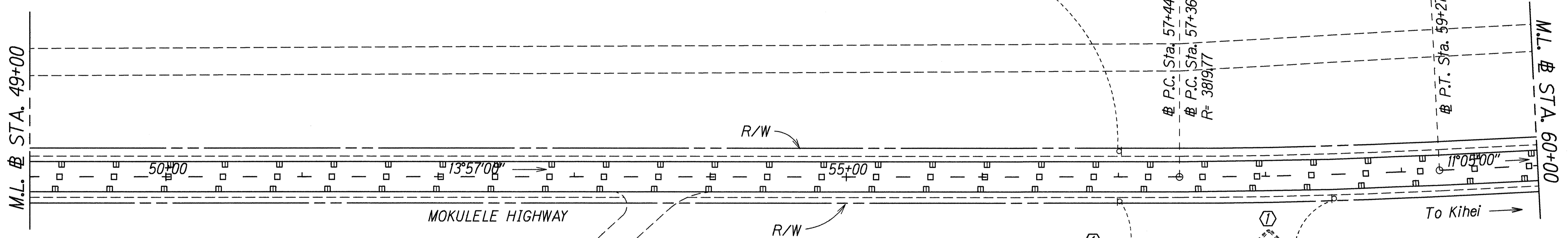
FED. ROAD DIST. NO.	STATE	PROJ. NO.	FISCAL YEAR	SHEET NO.	TOTAL SHEETS
HAWAII	HAW.	HWY-M-04-99M	1999	22	36

TRUE NORTH  
SCALE : 1" = 40'



TRUE NORTH  
SCALE : 1" = 40'

**CURVE DATA**  
 $\Delta = 2^\circ 52' 00''$   
 $R = 3819.7200'$   
 $T = 95.58'$   
 $C = 191.09'$   
 $L = 191.11'$

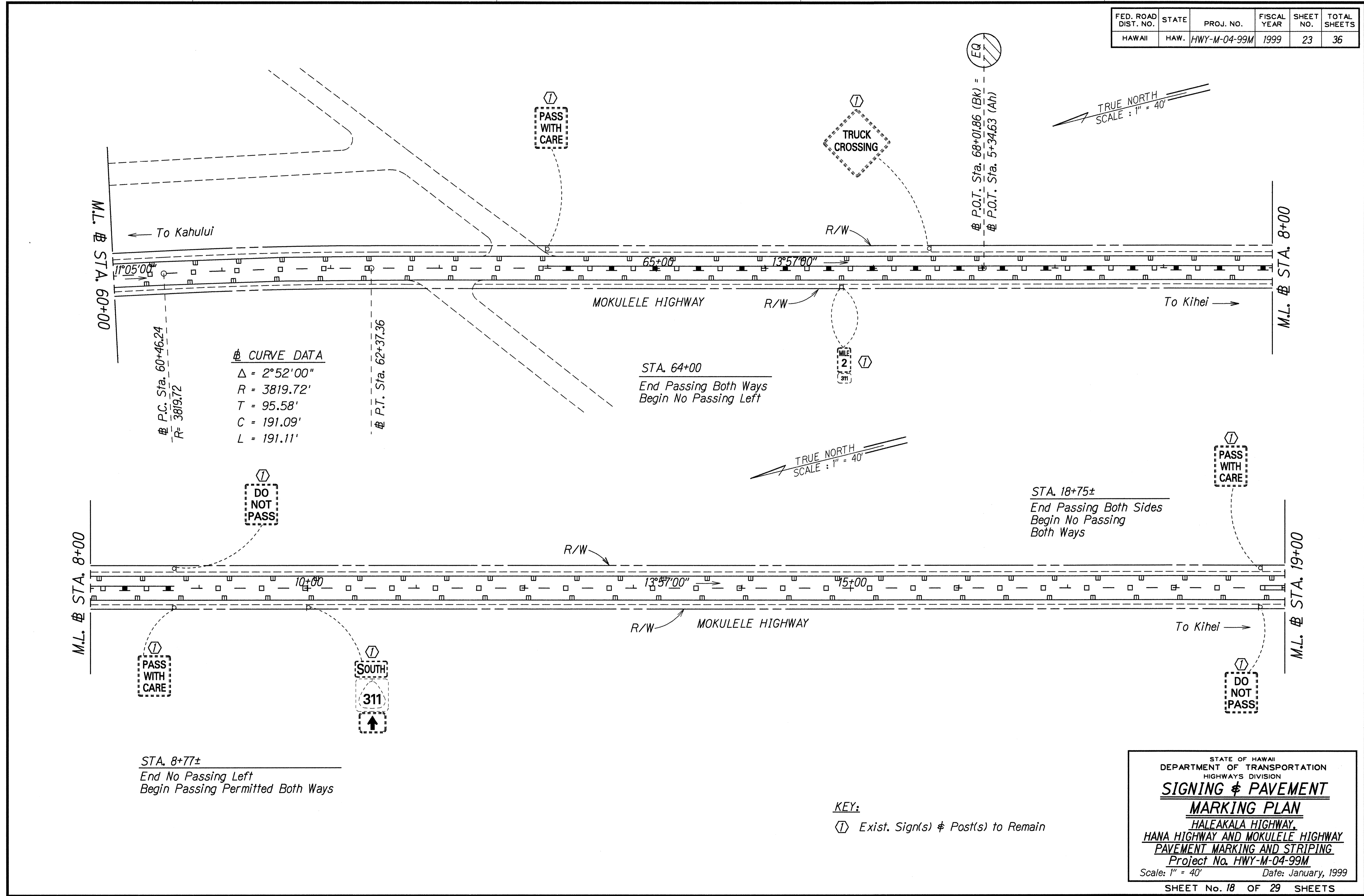


**KEY:**  
 (1) Exist. Sign(s) & Post(s) to Remain

ORIGINAL PLAN	DATE: Dec. 1998
SURVEY PLOTTED BY	
DRAWN BY	
TRACED BY	
NOTE BOOK	
QUANTITIES BY	
CHECKED BY	

STATE OF HAWAII  
 DEPARTMENT OF TRANSPORTATION  
 HIGHWAYS DIVISION  
**SIGNING & PAVEMENT MARKING PLAN**  
 HALEAKALA HIGHWAY,  
 HANA HIGHWAY AND MOKULELE HIGHWAY  
 PAVEMENT MARKING AND STRIPING  
 Project No. HWY-M-04-99M  
 Scale: 1" = 40' Date: January, 1999  
 SHEET No. 17 OF 29 SHEETS

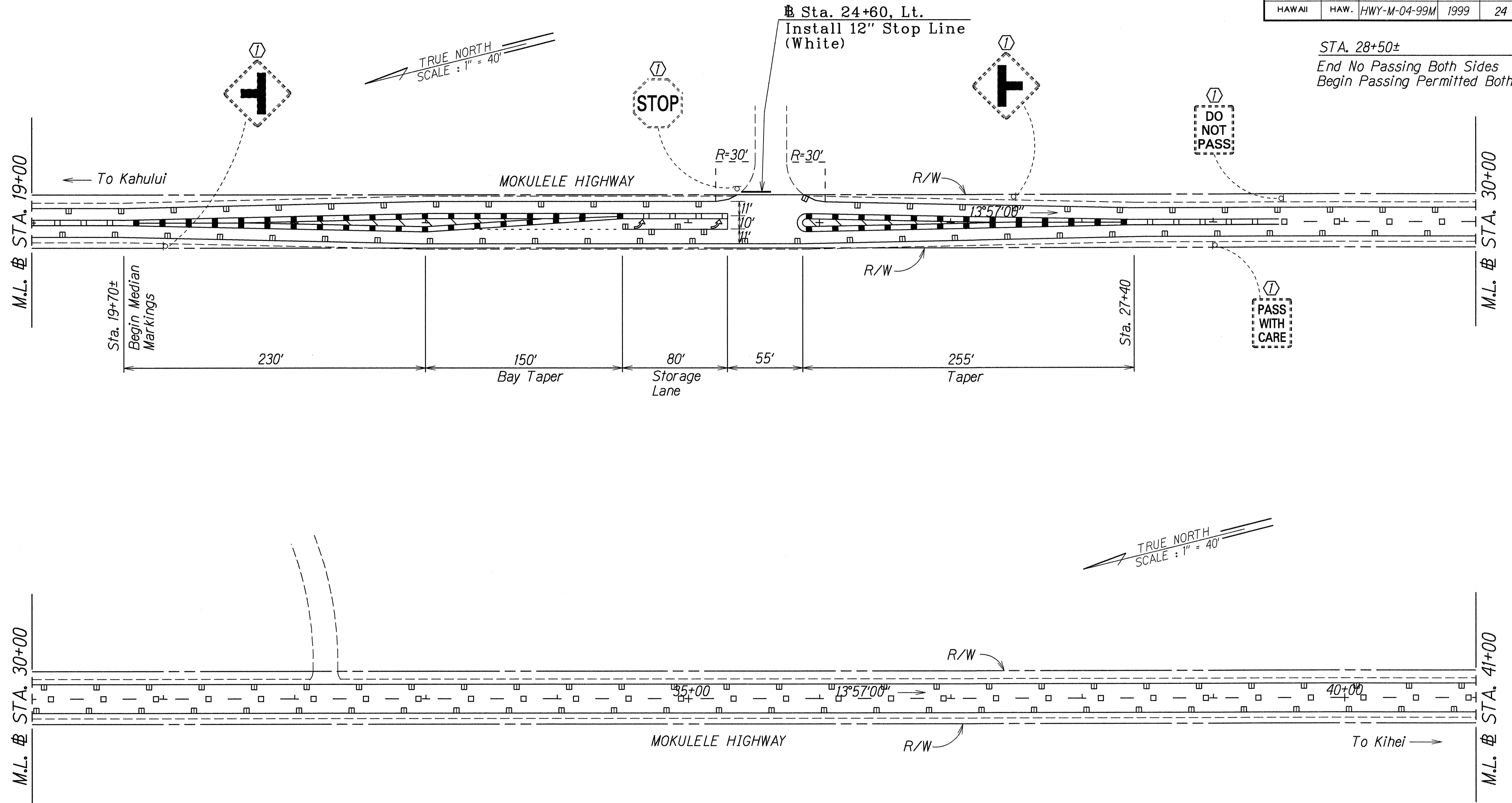
FED. ROAD DIST. NO.	STATE	PROJ. NO.	FISCAL YEAR	SHEET NO.	TOTAL SHEETS
HAWAII	HAW.	HWY-M-04-99M	1999	23	36



SURVEY PLOTTED BY	DATE
DRAWN BY	Dec. 1998
TRACED BY	
NOTE BOOK	
QUANTITIES BY	
CHECKED BY	

FED. ROAD DIST. NO.	STATE	PROJ. NO.	FISCAL YEAR	SHEET NO.	TOTAL SHEETS
HAWAII	HAW.	HWY-M-04-99M	1999	24	36

STA. 28+50±  
 End No Passing Both Sides  
 Begin Passing Permitted Both Ways



SURVEY PLOTTED BY	DATE
DRAWN BY	Dec. 1999
NOTE BOOK	
QUANTITIES BY	
CHECKED BY	

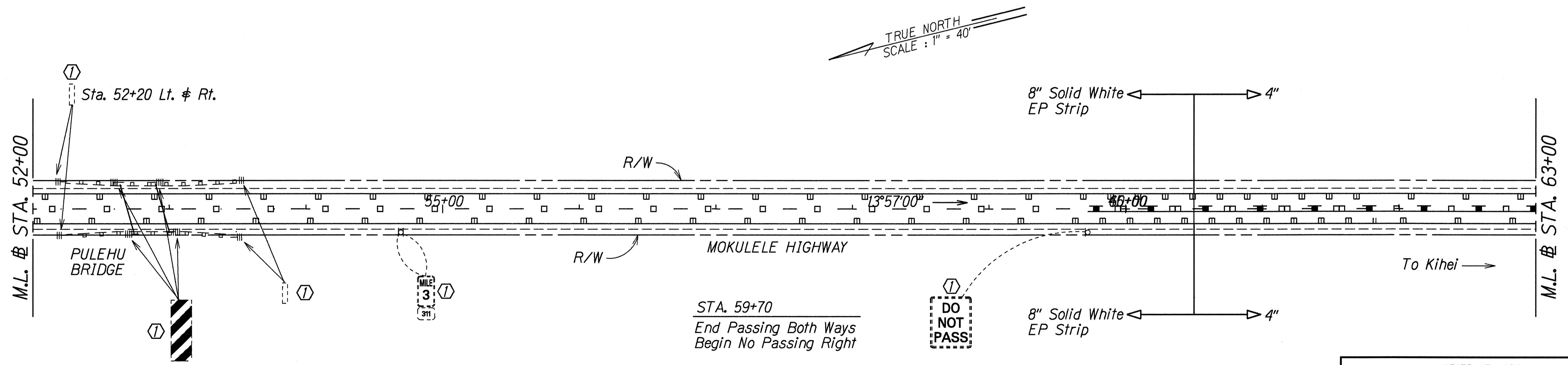
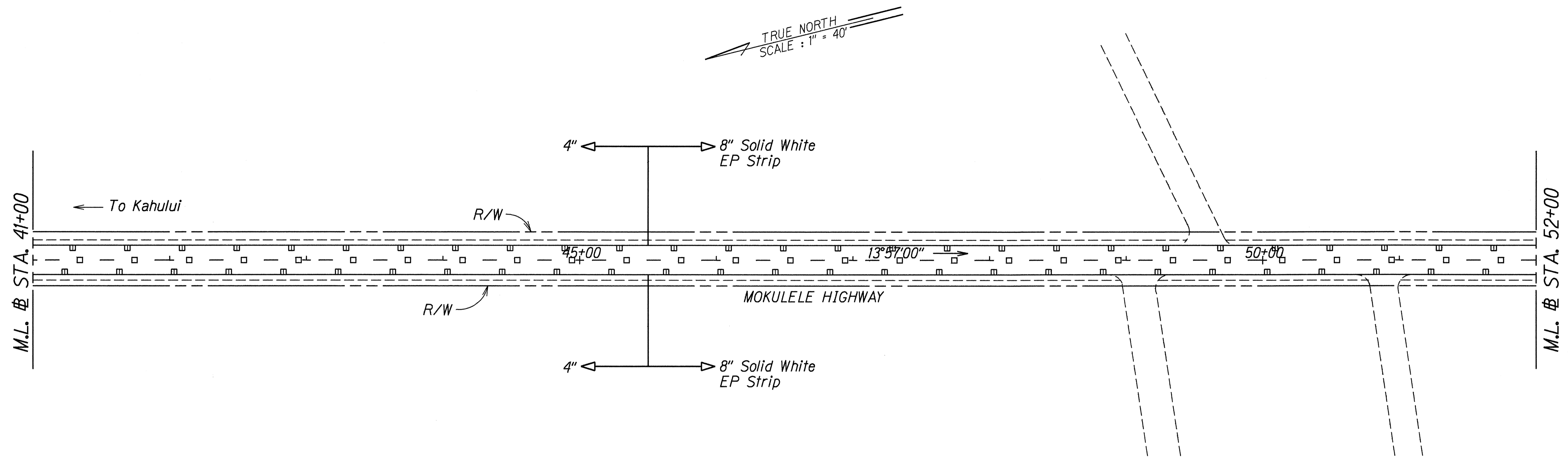
LEGEND FOR AS-BUILT POSTINGS	
	Squiggly line for as-built deletion
	Double line for as-built deletion
Roadway	Text for as-built posting

KEY:  
 Exist. Sign(s) & Post(s) to Remain

STATE OF HAWAII  
 DEPARTMENT OF TRANSPORTATION  
 HIGHWAYS DIVISION  
**SIGNING & PAVEMENT MARKING PLAN**  
 HALEAKALA HIGHWAY,  
 HANA HIGHWAY AND MOKULELE HIGHWAY  
 PAVEMENT MARKING AND STRIPING  
 Project No. HWY-M-04-99M  
 Scale: 1" = 40' Date: January, 1999  
 SHEET No. 19 OF 29 SHEETS

"AS-BUILT"

FED. ROAD DIST. NO.	STATE	PROJ. NO.	FISCAL YEAR	SHEET NO.	TOTAL SHEETS
HAWAII	HAW.	HWY-M-04-99M	1999	25	36



SURVEY PLOTTED BY	DATE	1999
DRAWN BY		
TRACED BY		
NOTE BOOK		
QUANTITIES BY		
CHECKED BY		

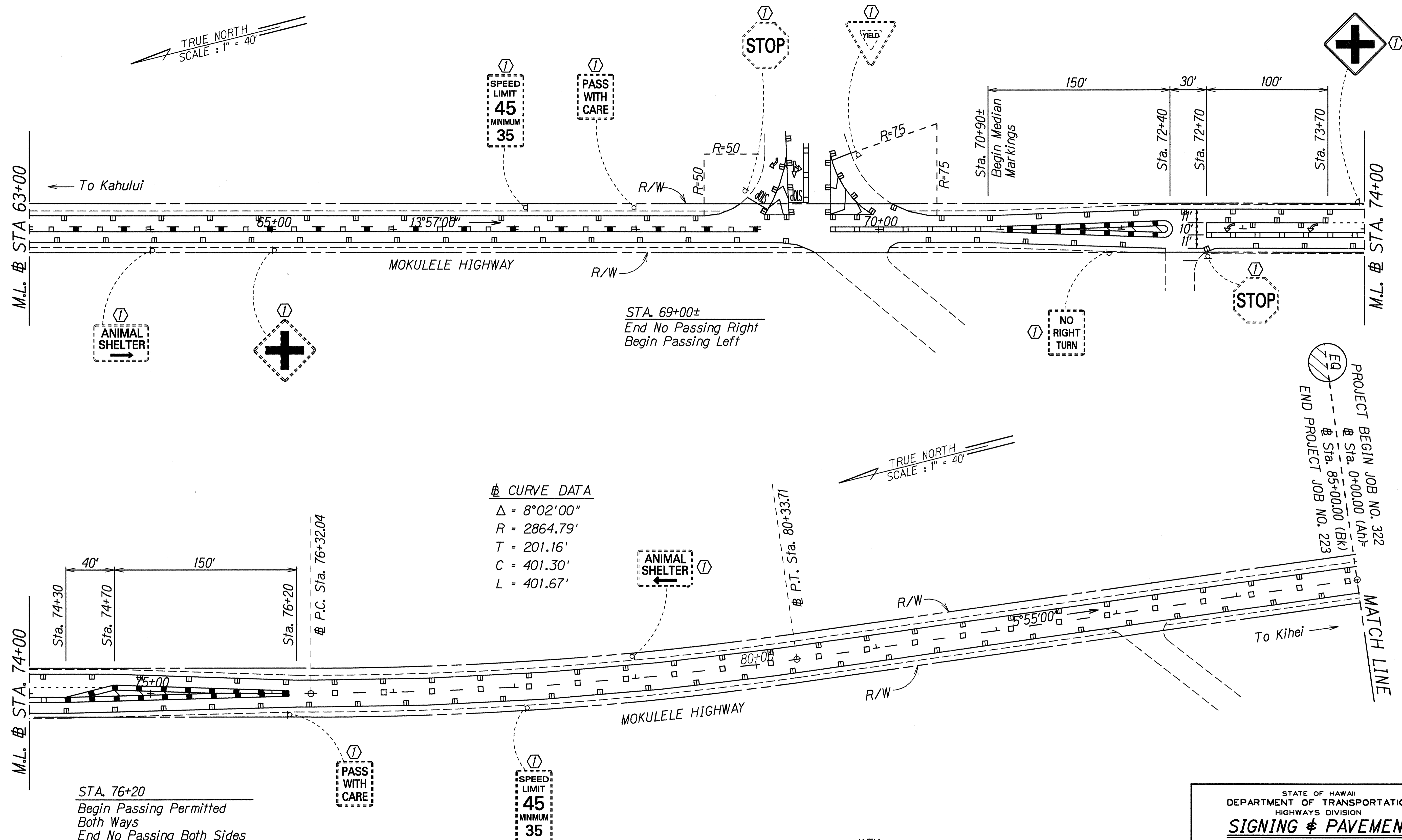
DO NOT PASS

STA. 59+70  
End Passing Both Ways  
Begin No Passing Right

KEY:  
Ⓛ Exist. Sign(s) & Post(s) to Remain

STATE OF HAWAII  
DEPARTMENT OF TRANSPORTATION  
HIGHWAYS DIVISION  
**SIGNING & PAVEMENT  
MARKING PLAN**  
HALEAKALA HIGHWAY,  
HANA HIGHWAY AND MOKULELE HIGHWAY  
PAVEMENT MARKING AND STRIPING  
Project No. HWY-M-04-99M  
Scale: 1" = 40' Date: January, 1999  
SHEET No. 20 OF 29 SHEETS

FED. ROAD DIST. NO.	STATE	PROJ. NO.	FISCAL YEAR	SHEET NO.	TOTAL SHEETS
HAWAII	HAW.	HWY-M-04-99M	1999	26	36



**CURVE DATA**  
 $\Delta = 8^{\circ}02'00''$   
 $R = 2864.79'$   
 $T = 201.16'$   
 $C = 401.30'$   
 $L = 401.67'$

STA. 76+20  
 Begin Passing Permitted  
 Both Ways  
 End No Passing Both Sides

**KEY:**  
 (Symbol) Exist. Sign(s) & Post(s) to Remain

SURVEY PLOTTED BY	DATE
DRAWN BY	Dec. 1998
TRACED BY	
NOTE BOOK	
QUANTITIES BY	
CHECKED BY	

STATE OF HAWAII  
 DEPARTMENT OF TRANSPORTATION  
 HIGHWAYS DIVISION  
**SIGNING & PAVEMENT MARKING PLAN**  
 HALEAKALA HIGHWAY,  
 HANA HIGHWAY AND MOKULELE HIGHWAY  
 PAVEMENT MARKING AND STRIPING  
 Project No. HWY-M-04-99M  
 Scale: 1" = 40' Date: January, 1999  
 SHEET No. 21 OF 29 SHEETS

FED. ROAD DIST. NO.	STATE	PROJ. NO.	FISCAL YEAR	SHEET NO.	TOTAL SHEETS
HAWAII	HAW.	HWY-M-04-99M	1999	27	36

End Job No. 223  
 # Sta. 85+00.00 (BKF) EQ  
 # Sta. 0+00.00 (AH)  
 Begin Job No. 322

MATCH LINE

To Kahului

MOKULELE HIGHWAY

Plantation Rd.

sta 5+50  
18" rcp

5+00

5+55'00"

10+00

M.L. # STA. 11+00

TRUE NORTH  
SCALE: 1" = 40'

M.L. # STA. 11+00

R/W

# P.I. Sta. 15+35.17

Plantation Rd.

15+00

6°42'00"

20+00

MOKULELE HIGHWAY

To Kihei

M.L. # STA. 22+00

TRUE NORTH  
SCALE: 1" = 40'

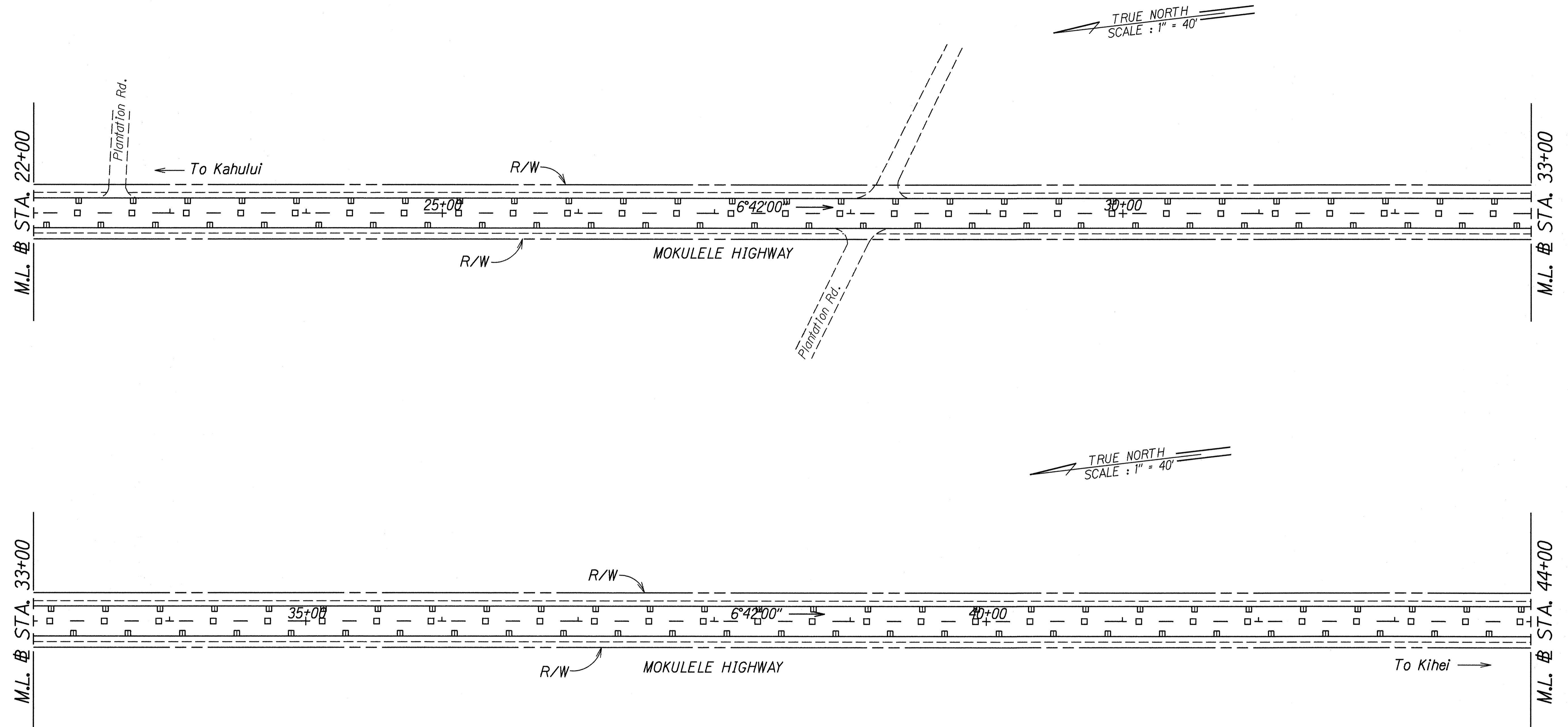
SURVEY PLOTTED BY	DATE
DRAWN BY	Dec. 1998
TRACED BY	
NOTE BOOK	
QUANTITIES BY	
CHECKED BY	

KEY:

- ① Exist. Sign(s) & Post(s) to Remain
- ② Remove Exist. Sign(s) & Post(s)
- ③ Remove Exist. & Install New Sign(s) & Post(s)
- ④ Install New Sign(s) & Post(s)

STATE OF HAWAII  
 DEPARTMENT OF TRANSPORTATION  
 HIGHWAYS DIVISION  
**SIGNING & PAVEMENT**  
**MARKING PLAN**  
 HALEAKALA HIGHWAY,  
 HANA HIGHWAY AND MOKULELE HIGHWAY  
 PAVEMENT MARKING AND STRIPING  
 Project No. HWY-M-04-99M  
 Scale: 1" = 40' Date: January, 1999

FED. ROAD DIST. NO.	STATE	PROJ. NO.	FISCAL YEAR	SHEET NO.	TOTAL SHEETS
HAWAII	HAW.	HWY-M-04-99M	1999	28	36



ORIGINAL PLAN	SURVEY PLOTTED BY	DATE
TRACED BY	DRAWN BY	Dec. 1998
NOTES BOOK	CHECKED BY	
logins by		
checked by		

STATE OF HAWAII  
DEPARTMENT OF TRANSPORTATION  
HIGHWAYS DIVISION

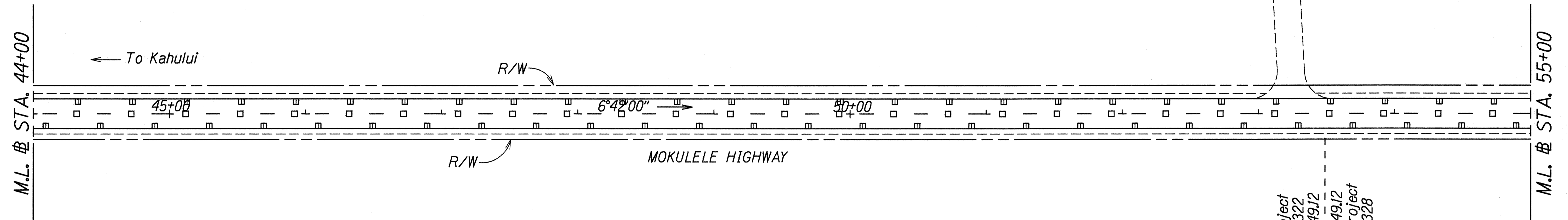
**SIGNING & PAVEMENT**  
**MARKING PLAN**

HALEAKALA HIGHWAY,  
HANA HIGHWAY AND MOKULELE HIGHWAY  
PAVEMENT MARKING AND STRIPING  
Project No. HWY-M-04-99M  
Scale: 1" = 40' Date: January, 1999

SHEET No. 23 OF 29 SHEETS

FED. ROAD DIST. NO.	STATE	PROJ. NO.	FISCAL YEAR	SHEET NO.	TOTAL SHEETS
HAWAII	HAW.	HWY-M-04-99M	1999	29	36

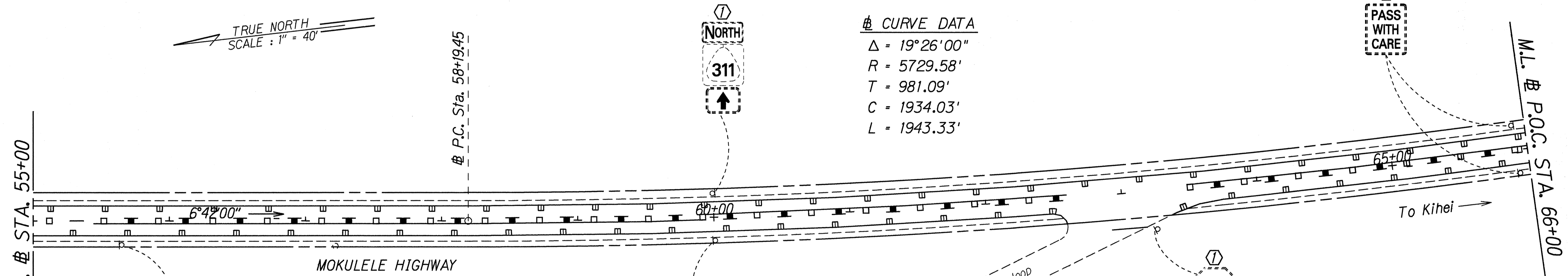
TRUE NORTH  
SCALE: 1" = 40'



End Project  
Job No. 322  
Sta. 53+49.12  
Begin Project  
Job No. 328

TRUE NORTH  
SCALE: 1" = 40'

**CURVE DATA**  
 $\Delta = 19^\circ 26' 00''$   
 $R = 5729.58'$   
 $T = 981.09'$   
 $C = 1934.03'$   
 $L = 1943.33'$



STA. 55+65  
End Passing Both Ways  
Begin No Passing Right

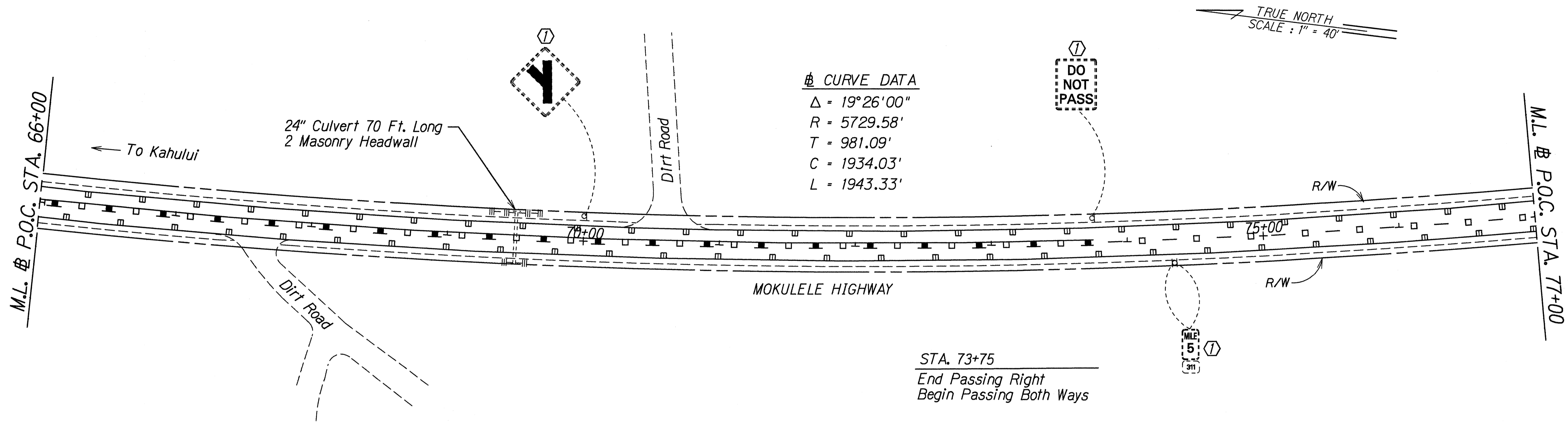
STA. 66+00  
End No Passing Right  
Begin Passing

**KEY:**  
 (1) Exist. Sign(s) & Post(s) to Remain

SURVEY PLOTTED BY	DATE
DRAWN BY	Dec. 1999
NOTES	
QUANTITIES BY	
CHECKED BY	

STATE OF HAWAII  
 DEPARTMENT OF TRANSPORTATION  
 HIGHWAYS DIVISION  
**SIGNING & PAVEMENT MARKING PLAN**  
 HALEAKALA HIGHWAY,  
 HANA HIGHWAY AND MOKULELE HIGHWAY  
 PAVEMENT MARKING AND STRIPING  
 Project No. HWY-M-04-99M  
 Scale: 1" = 40' Date: January, 1999  
 SHEET No. 24 OF 29 SHEETS

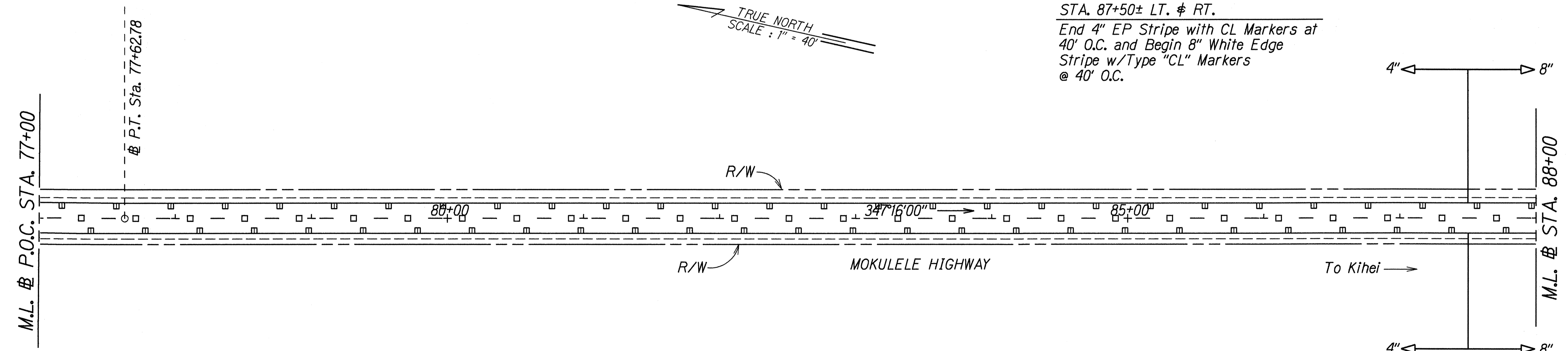
FED. ROAD DIST. NO.	STATE	PROJ. NO.	FISCAL YEAR	SHEET NO.	TOTAL SHEETS
HAWAII	HAW.	HWY-M-04-99M	1999	30	36



**CURVE DATA**  
 $\Delta = 19^\circ 26' 00''$   
 $R = 5729.58'$   
 $T = 981.09'$   
 $C = 1934.03'$   
 $L = 1943.33'$

STA. 73+75  
 End Passing Right  
 Begin Passing Both Ways

STA. 87+50± LT. & RT.  
 End 4" EP Stripe with CL Markers at 40' O.C. and Begin 8" White Edge Stripe w/Type "CL" Markers @ 40' O.C.

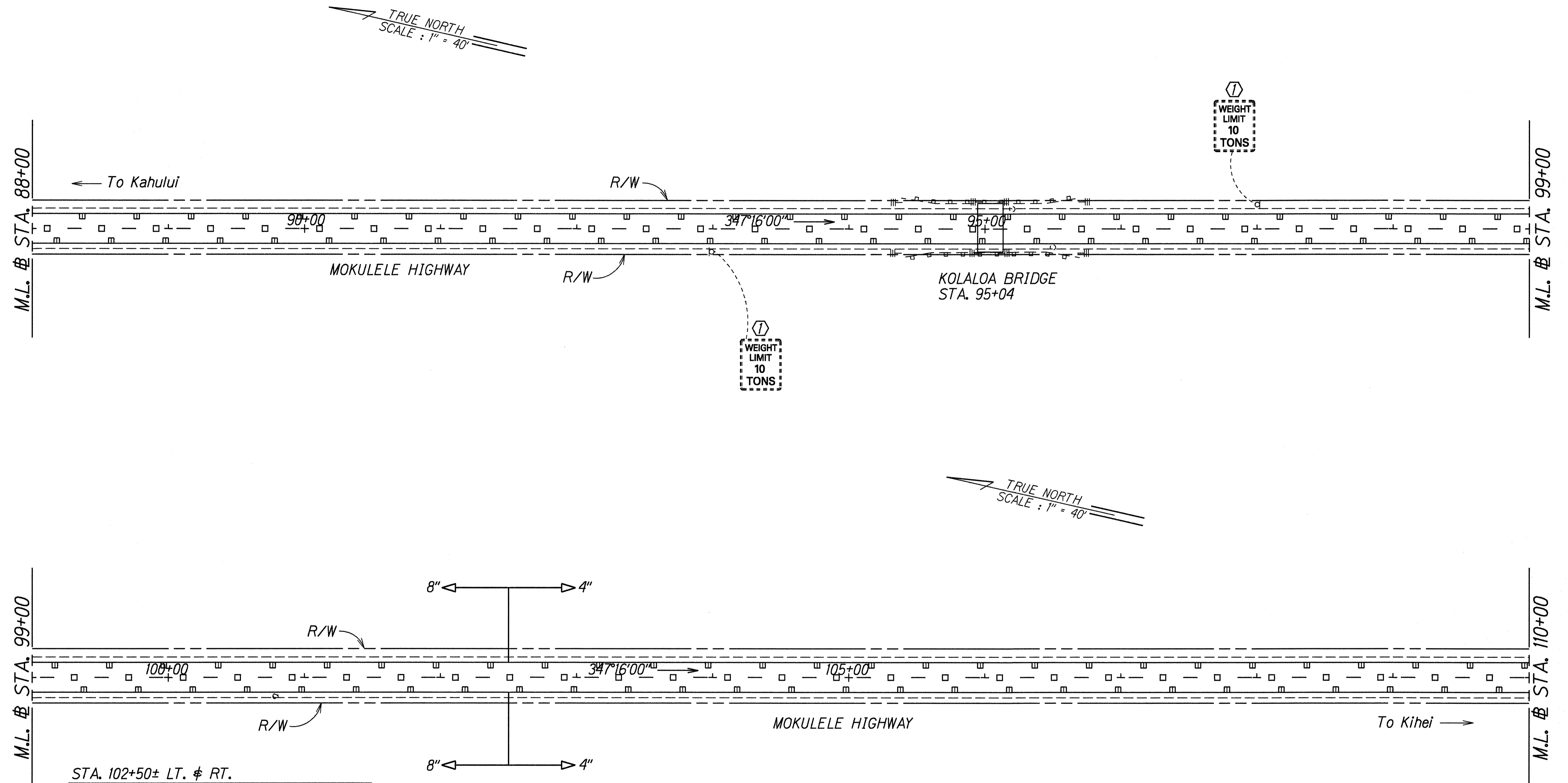


**KEY:**  
 Ⓛ Exist. Sign(s) & Post(s) to Remain

SURVEY PLOTTED BY	DATE
DRAWN BY	Dec. 1998
TRACED BY	
NOTE BOOK	
QUANTITIES BY	
CHECKED BY	

STATE OF HAWAII  
 DEPARTMENT OF TRANSPORTATION  
 HIGHWAYS DIVISION  
**SIGNING & PAVEMENT MARKING PLAN**  
 HALEAKALA HIGHWAY,  
 HANA HIGHWAY AND MOKULELE HIGHWAY  
 PAVEMENT MARKING AND STRIPING  
 Project No. HWY-M-04-99M  
 Scale: 1" = 40' Date: January, 1999  
 SHEET No. 25 OF 29 SHEETS

FED. ROAD DIST. NO.	STATE	PROJ. NO.	FISCAL YEAR	SHEET NO.	TOTAL SHEETS
HAWAII	HAW.	HWY-M-04-99M	1999	31	36



STA. 102+50± LT. & RT.  
 End 8" White Edge with CL RPM @ 40' O.C.  
 and Begin 4" EP Stripe with CL RPM @ 40' O.C.

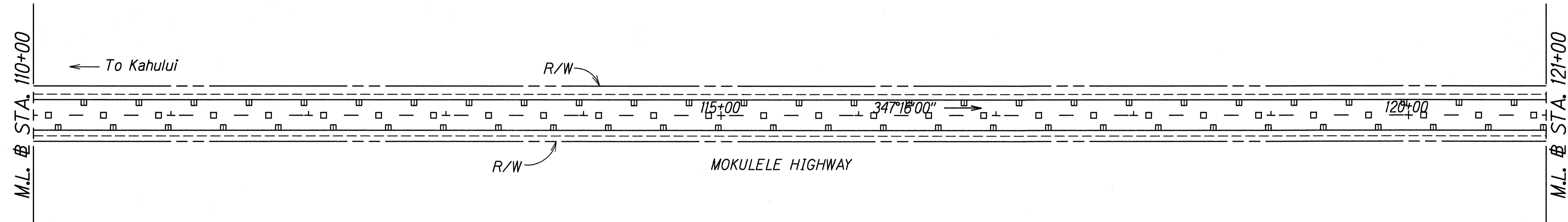
DATE	Dec. 1998
SURVEY PLOTTED BY	
DRAWN BY	JL
TRACED BY	
DESIGNED BY	
CHECKED BY	
ORIGINAL PLAN	
NOTE BOOK	
DATE	
BY	
CHECKED BY	

KEY:  
 (1) Exist. Sign(s) & Post(s) to Remain

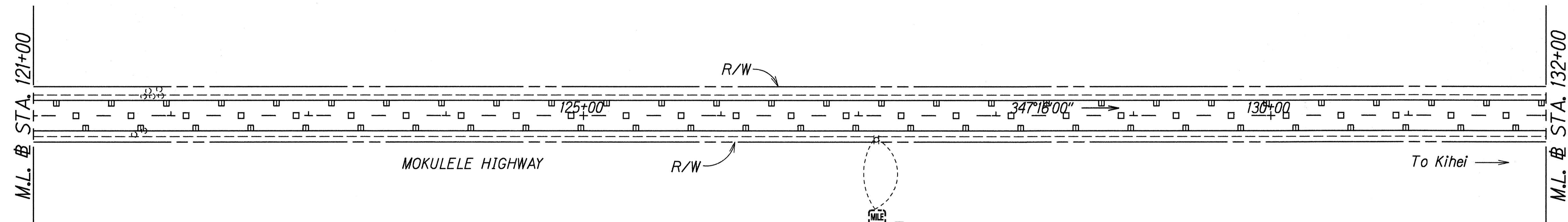
STATE OF HAWAII  
 DEPARTMENT OF TRANSPORTATION  
 HIGHWAYS DIVISION  
**SIGNING & PAVEMENT MARKING PLAN**  
 HALEAKALA HIGHWAY,  
 HANA HIGHWAY AND MOKULELE HIGHWAY  
 PAVEMENT MARKING AND STRIPING  
 Project No. HWY-M-04-99M  
 Scale: 1" = 40' Date: January, 1999  
 SHEET No. 26 OF 29 SHEETS

FED. ROAD DIST. NO.	STATE	PROJ. NO.	FISCAL YEAR	SHEET NO.	TOTAL SHEETS
HAWAII	HAW.	HWY-M-04-99M	1999	32	36

TRUE NORTH  
SCALE: 1" = 40'



TRUE NORTH  
SCALE: 1" = 40'



ORIGINAL PLAN	SURVEY PLOTTED BY	DATE
NOTES BOOK	DRAWN BY	Dec. 1998
logins by	CHECKED BY	

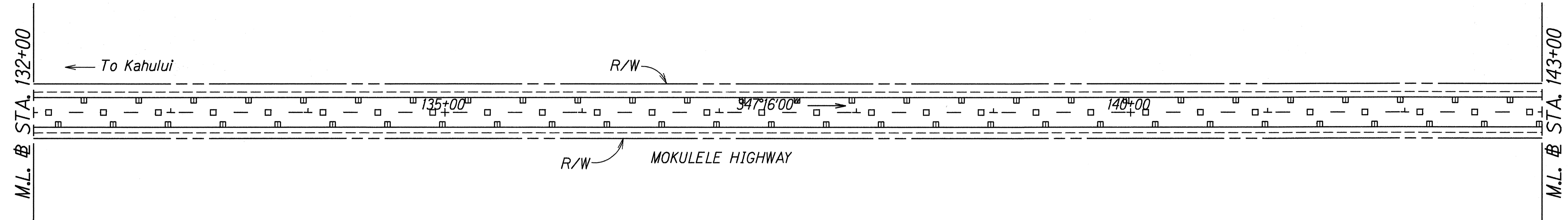
KEY:

Ⓛ Exist. Sign(s) & Post(s) to Remain

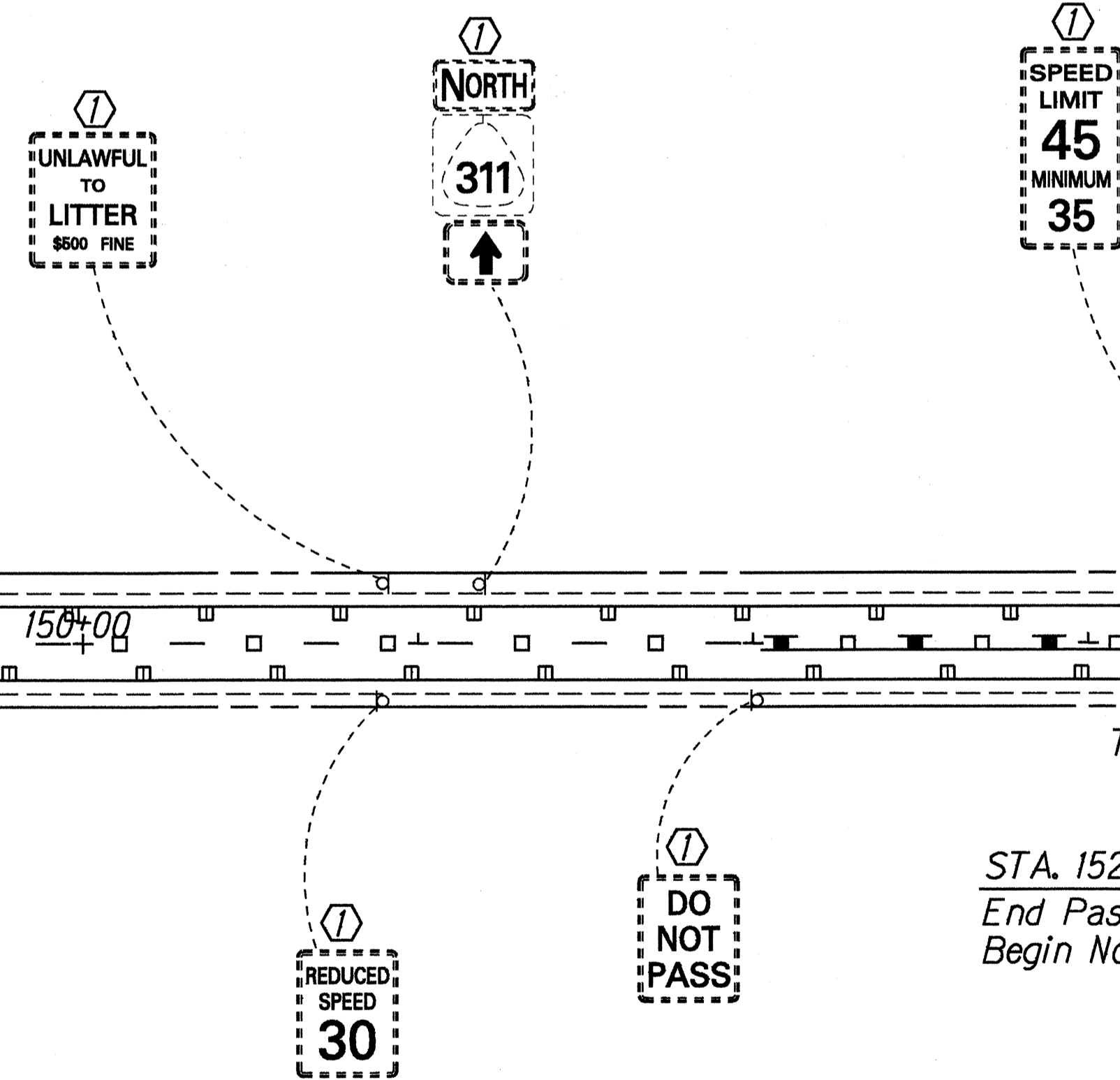
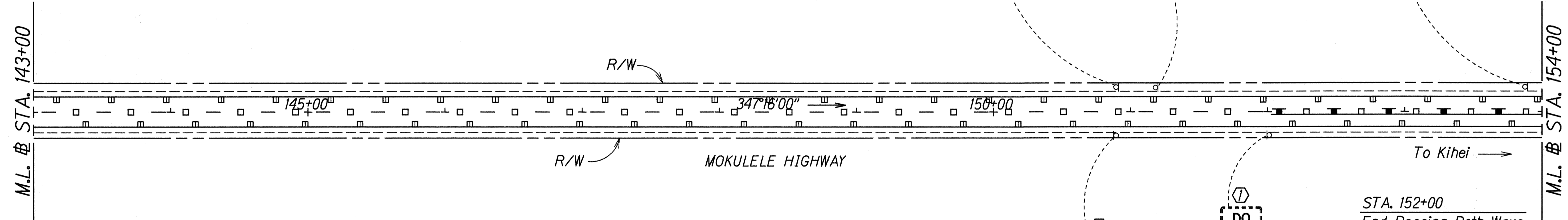
STATE OF HAWAII  
DEPARTMENT OF TRANSPORTATION  
HIGHWAYS DIVISION  
**SIGNING & PAVEMENT MARKING PLAN**  
HALEAKALA HIGHWAY,  
HANA HIGHWAY AND MOKULELE HIGHWAY  
PAVEMENT MARKING AND STRIPING  
Project No. HWY-M-04-99M  
Scale: 1" = 40' Date: January, 1999  
SHEET No. 27 OF 29 SHEETS

FED. ROAD DIST. NO.	STATE	PROJ. NO.	FISCAL YEAR	SHEET NO.	TOTAL SHEETS
HAWAII	HAW.	HWY-M-04-99M	1999	33	36

TRUE NORTH  
SCALE : 1" = 40'



TRUE NORTH  
SCALE : 1" = 40'



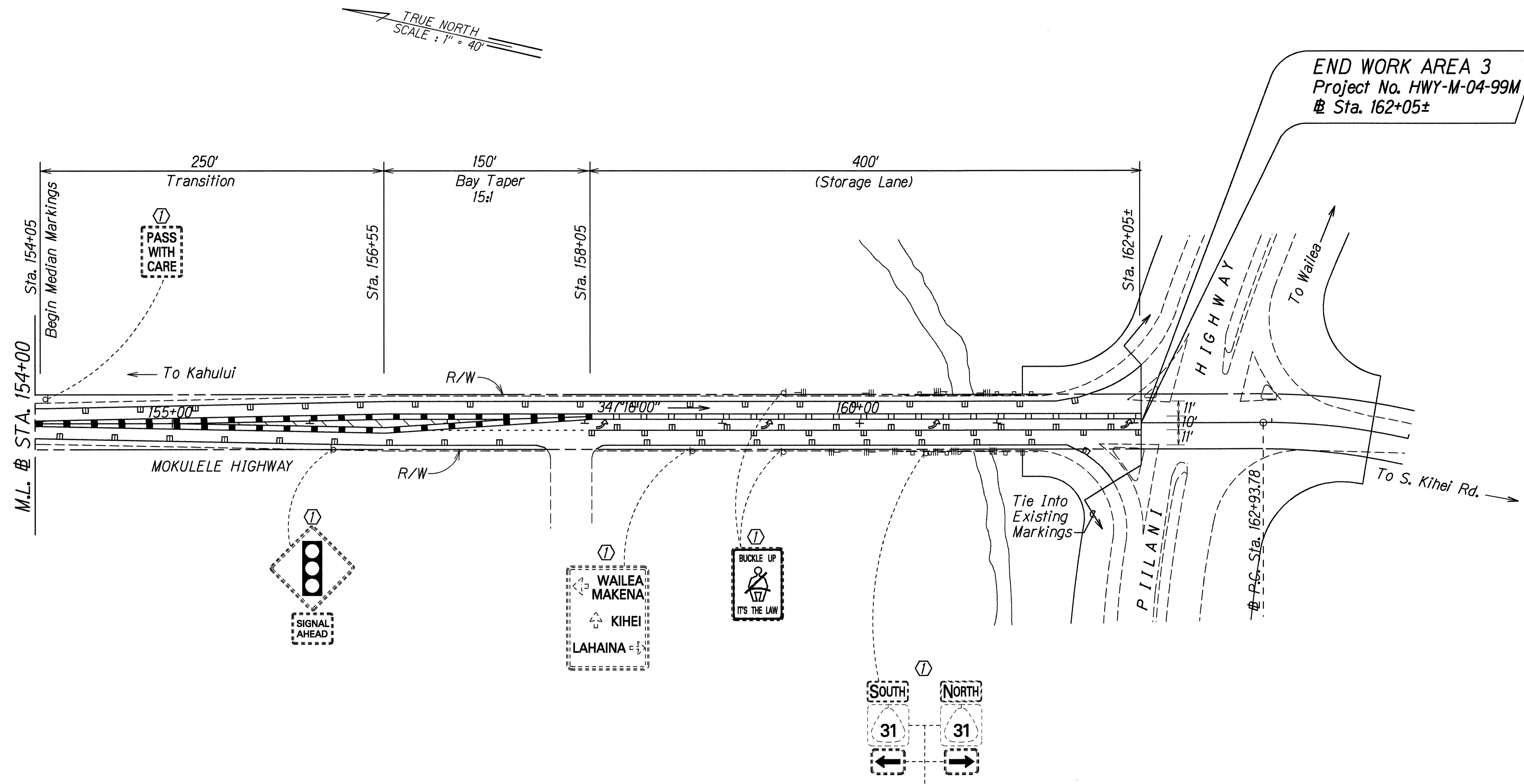
SURVEY PLOTTED BY	DATE
DRAWN BY	Dec. 1998
TRACED BY	
NOTE BOOK	
DESIGNED BY	
CHECKED BY	

**KEY:**

① Exist. Sign(s) & Post(s) to Remain

STATE OF HAWAII  
DEPARTMENT OF TRANSPORTATION  
HIGHWAYS DIVISION  
**SIGNING & PAVEMENT  
MARKING PLAN**  
HALEAKALA HIGHWAY,  
HANA HIGHWAY AND MOKULELE HIGHWAY  
PAVEMENT MARKING AND STRIPING  
Project No. HWY-M-04-99M  
Scale: 1" = 40' Date: January, 1999  
SHEET No. 28 OF 29 SHEETS

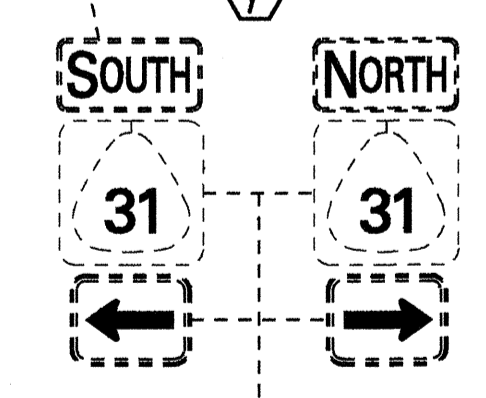
FED. ROAD DIST. NO.	STATE	PROJ. NO.	FISCAL YEAR	SHEET NO.	TOTAL SHEETS
HAWAII	HAW.	HWY-M-04-99M	1999	34	36



TRUE NORTH  
SCALE: 1" = 40'

END WORK AREA 3  
Project No. HWY-M-04-99M  
# Sta. 162+05±

ORIGINAL PLAN	SURVEY PLOTTED BY	DATE
NOTE BOOK	DRAWN BY	Dec. 1998
DATE	TRACED BY	
	QUANTITIES BY	
	CHECKED BY	



KEY:  
① Exist. Sign(s) & Post(s) to Remain

STATE OF HAWAII  
DEPARTMENT OF TRANSPORTATION  
HIGHWAYS DIVISION

**SIGNING & PAVEMENT MARKING PLAN**

HALEAKALA HIGHWAY,  
HANA HIGHWAY AND MOKULELE HIGHWAY  
PAVEMENT MARKING AND STRIPING  
Project No. HWY-M-04-99M

Scale: 1" = 40'      Date: January, 1999

SHEET No. 29 OF 29 SHEETS