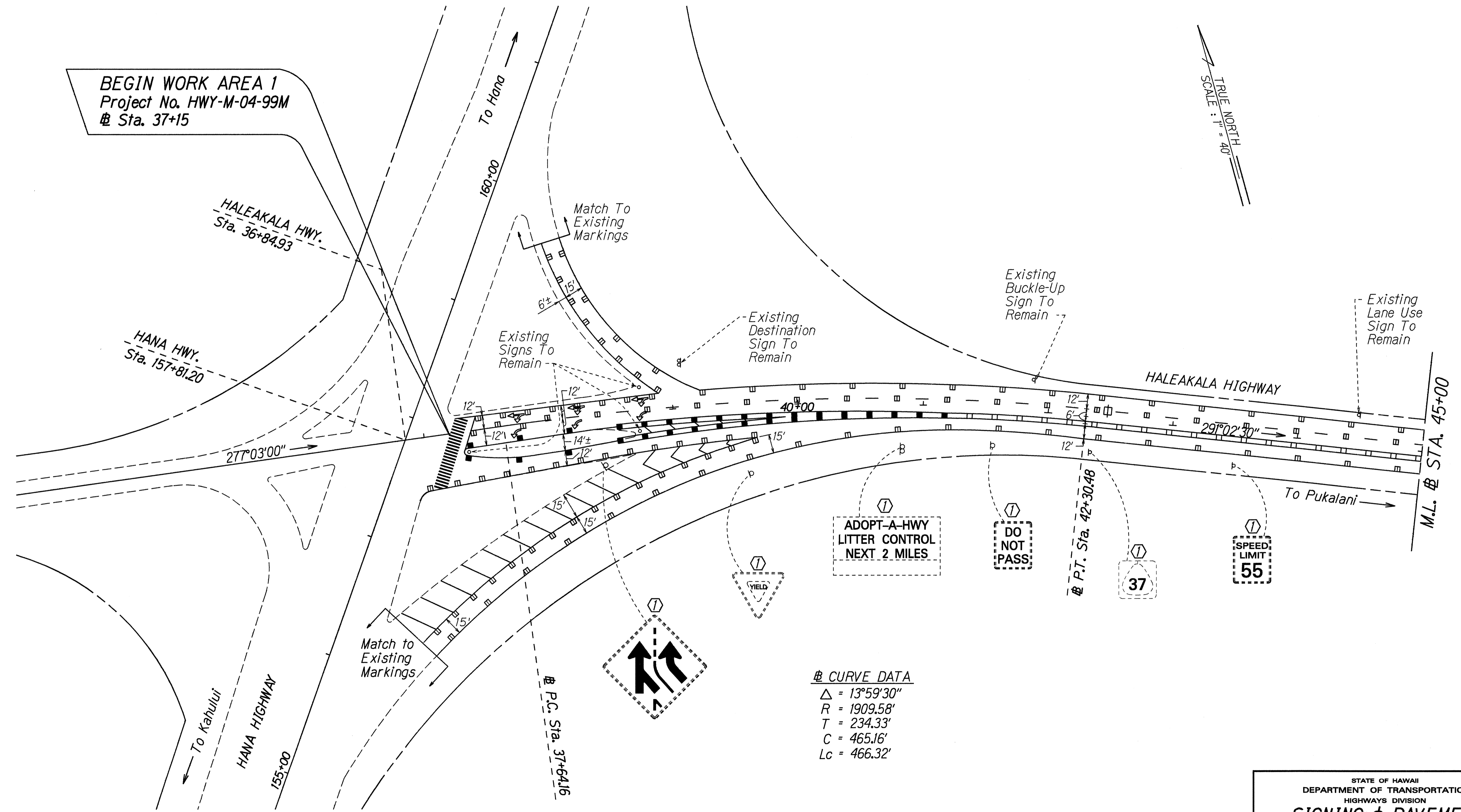


FED. ROAD DIST. NO.	STATE	PROJ. NO.	FISCAL YEAR	SHEET NO.	TOTAL SHEETS
HAWAII	HAW.	HWY-M-04-99M	1999	6	36



**BEGIN WORK AREA 1**  
Project No. HWY-M-04-99M  
# Sta. 37+15

TRUE NORTH  
SCALE: 1" = 40'

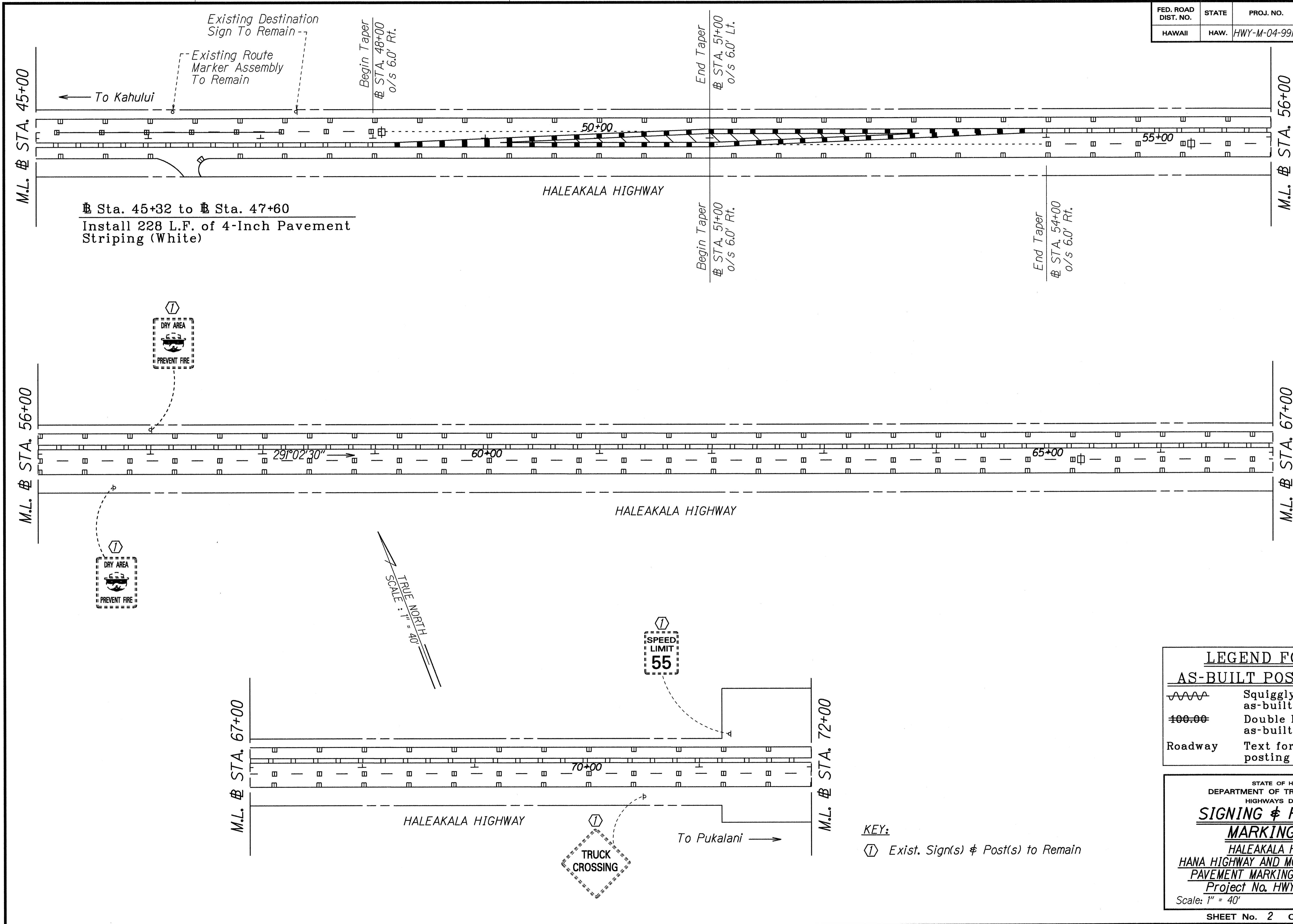
**# CURVE DATA**  
 $\Delta = 13^{\circ}59'30''$   
 $R = 1909.58'$   
 $T = 234.33'$   
 $C = 465.16'$   
 $Lc = 466.32'$

**KEY:**  
 (1) Exist. Sign(s) & Post(s) to Remain

SURVEY PLOTTED BY	DATE
DRAWN BY	Dec. 1999
TRACED BY	
NOTE BOOK	
DESIGNED BY	
CHECKED BY	

STATE OF HAWAII  
 DEPARTMENT OF TRANSPORTATION  
 HIGHWAYS DIVISION  
**SIGNING & PAVEMENT MARKING PLAN**  
 HALEAKALA HIGHWAY,  
 HANA HIGHWAY AND MOKULELE HIGHWAY  
 PAVEMENT MARKING AND STRIPING  
 Project No. HWY-M-04-99M  
 Scale: 1" = 40' Date: January, 1999  
 SHEET No. 1 OF 29 SHEETS

FED. ROAD DIST. NO.	STATE	PROJ. NO.	FISCAL YEAR	SHEET NO.	TOTAL SHEETS
HAWAII	HAW.	HWY-M-04-99M	1999	7	36



ORIGINAL PLAN  
 SURVEY PLOTTED BY \_\_\_\_\_ DATE: Dec. 1992  
 DRAWN BY \_\_\_\_\_  
 CHECKED BY \_\_\_\_\_  
 NOTE BOOK \_\_\_\_\_  
 QUANTITIES BY \_\_\_\_\_  
 CHECKED BY \_\_\_\_\_

LEGEND FOR AS-BUILT POSTINGS	
	Squiggly line for as-built deletion
	Double line for as-built deletion
Roadway	Text for as-built posting

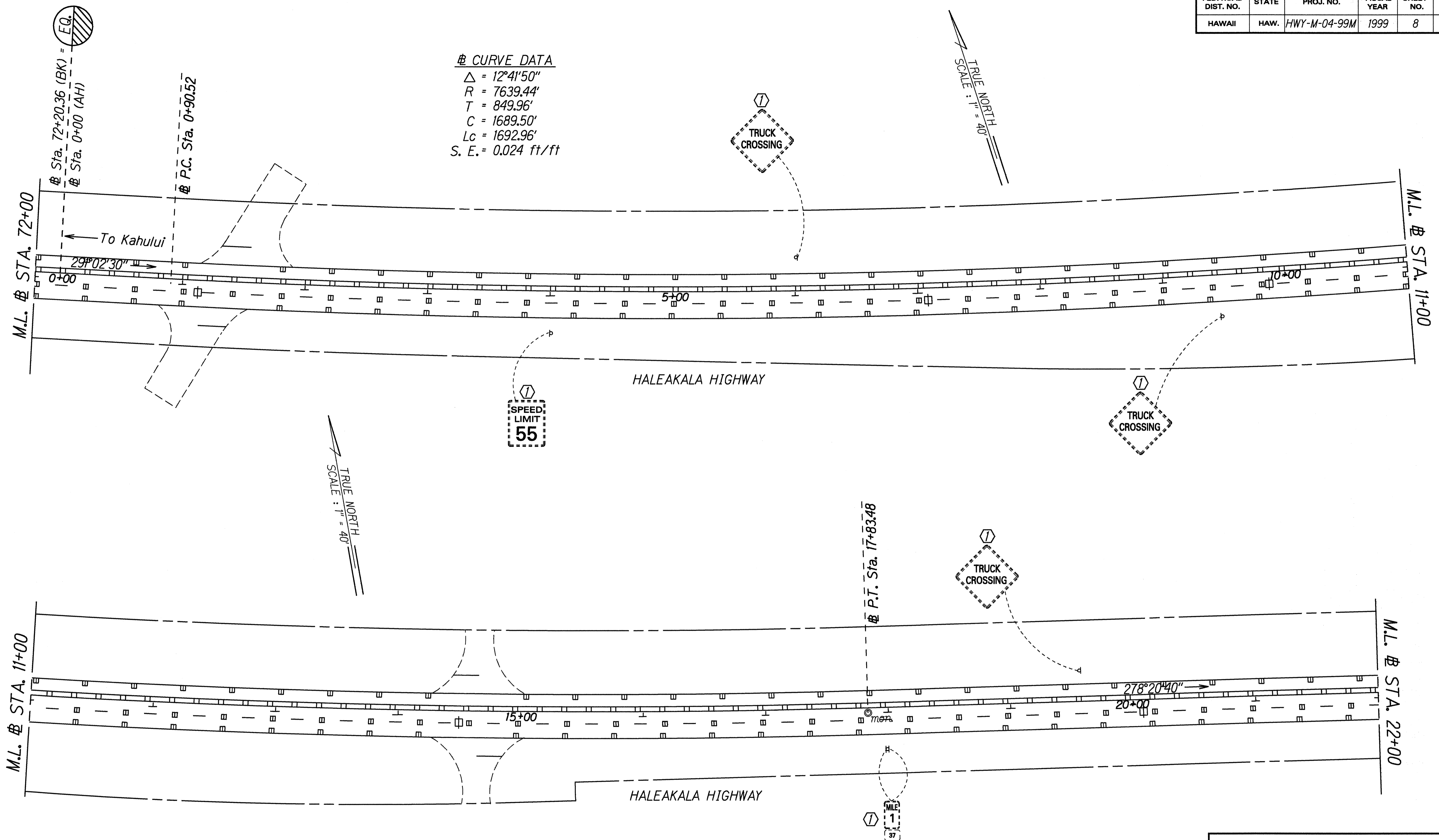
STATE OF HAWAII  
 DEPARTMENT OF TRANSPORTATION  
 HIGHWAYS DIVISION  
**SIGNING & PAVEMENT MARKING PLAN**  
 HALEAKALA HIGHWAY,  
 HANA HIGHWAY AND MOKULELE HIGHWAY  
 PAVEMENT MARKING AND STRIPING  
 Project No. HWY-M-04-99M  
 Scale: 1" = 40' Date: January, 1999

KEY:  
 (1) Exist. Sign(s) & Post(s) to Remain

"AS-BUILT"

FED. ROAD DIST. NO.	STATE	PROJ. NO.	FISCAL YEAR	SHEET NO.	TOTAL SHEETS
HAWAII	HAW.	HWY-M-04-99M	1999	8	36

**CURVE DATA**  
 $\Delta = 12^\circ 41' 50''$   
 $R = 7639.44'$   
 $T = 849.96'$   
 $C = 1689.50'$   
 $Lc = 1692.96'$   
 $S. E. = 0.024 \text{ ft/ft}$

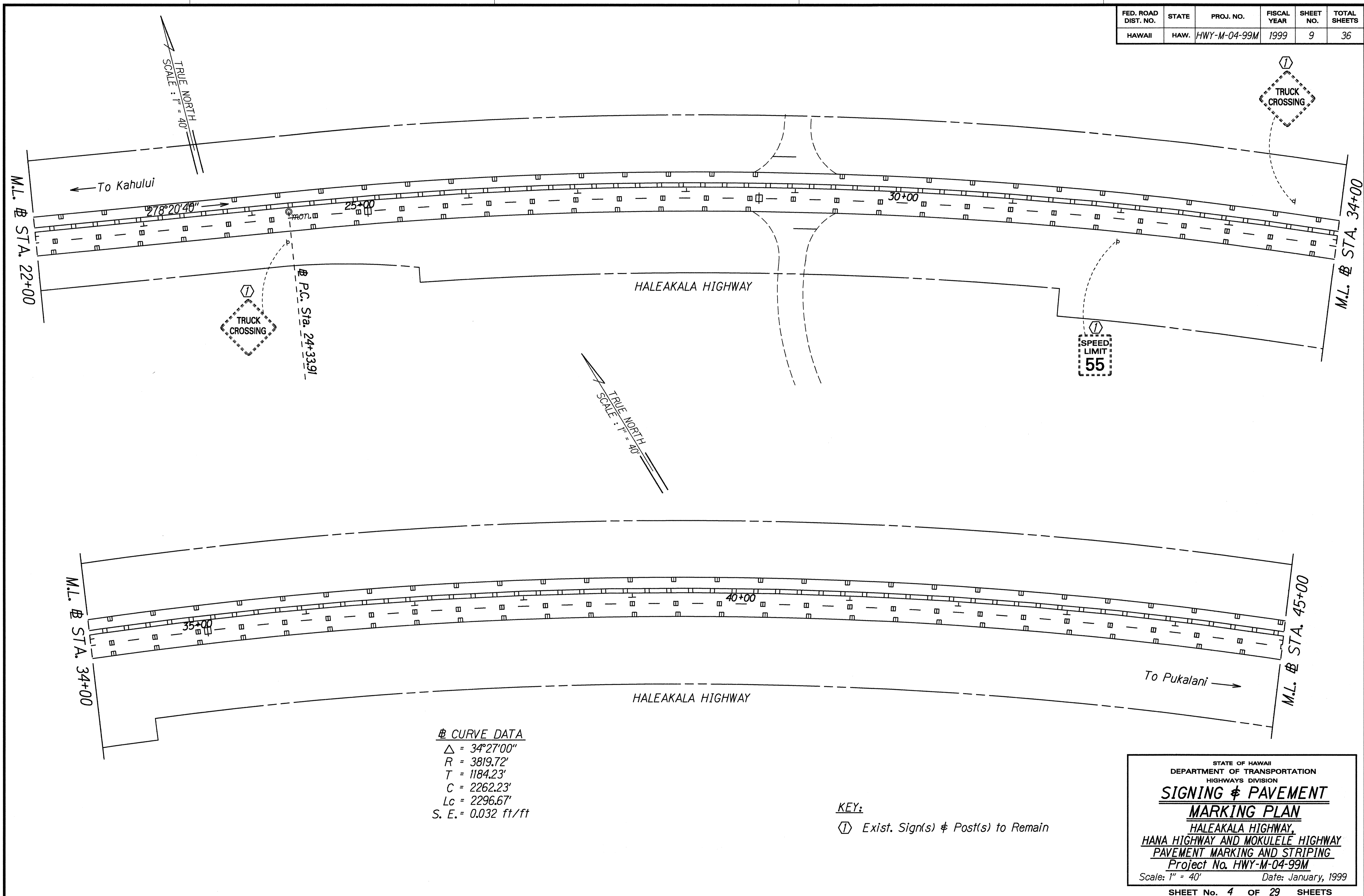


ORIGINAL PLAN	DATE
SURVEY PLOTTED BY	Dec. 1999
DRAWN BY	
TRACED BY	
NOTE BOOK	
QUANTITIES BY	
CHECKED BY	

**KEY:**  
 ⬡ Exist. Sign(s) & Post(s) to Remain

STATE OF HAWAII  
 DEPARTMENT OF TRANSPORTATION  
 HIGHWAYS DIVISION  
**SIGNING & PAVEMENT MARKING PLAN**  
 HALEAKALA HIGHWAY,  
 HANA HIGHWAY AND MOKULELE HIGHWAY  
 PAVEMENT MARKING AND STRIPING  
 Project No. HWY-M-04-99M  
 Scale: 1" = 40' Date: January, 1999

FED. ROAD DIST. NO.	STATE	PROJ. NO.	FISCAL YEAR	SHEET NO.	TOTAL SHEETS
HAWAII	HAW.	HWY-M-04-99M	1999	9	36



**☞ CURVE DATA**

$\Delta$	= 34°27'00"
R	= 3819.72'
T	= 1184.23'
C	= 2262.23'
Lc	= 2296.67'
S. E.	= 0.032 ft/ft

**KEY:**  
 (1) Exist. Sign(s) & Post(s) to Remain

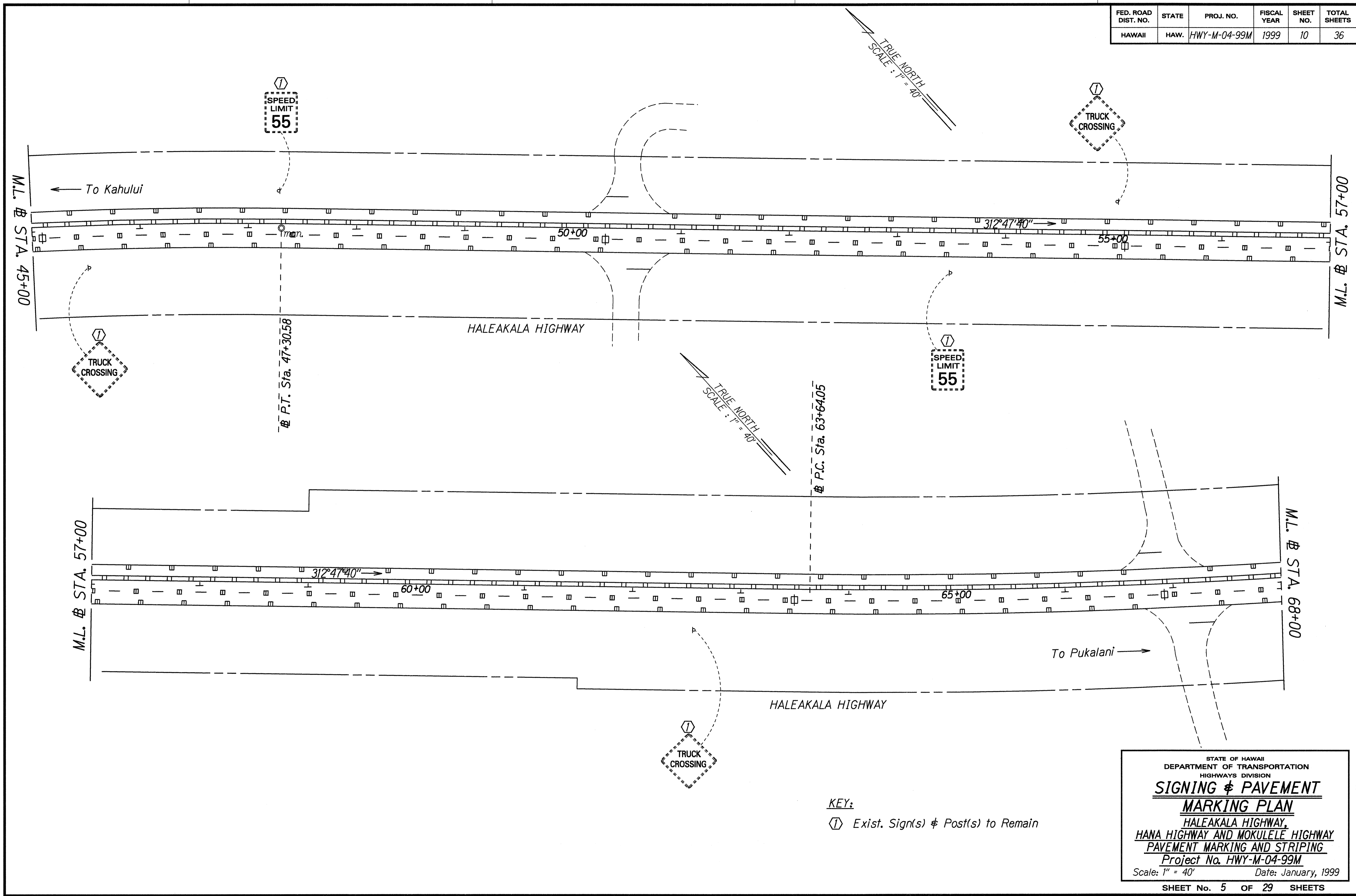
DATE	Dec. 1998
SURVEY PLOTTED BY	
DRAWN BY	
TRACED BY	
NOTE BOOK	
QUANTITIES BY	
CHECKED BY	

STATE OF HAWAII  
 DEPARTMENT OF TRANSPORTATION  
 HIGHWAYS DIVISION

**SIGNING & PAVEMENT MARKING PLAN**

HALEAKALA HIGHWAY,  
 HANA HIGHWAY AND MOKULELE HIGHWAY  
 PAVEMENT MARKING AND STRIPING  
 Project No. HWY-M-04-99M  
 Scale: 1" = 40' Date: January, 1999

FED. ROAD DIST. NO.	STATE	PROJ. NO.	FISCAL YEAR	SHEET NO.	TOTAL SHEETS
HAWAII	HAW.	HWY-M-04-99M	1999	10	36



SURVEY PLOTTED BY	DATE
DRAWN BY	Dec. 1998
NOTE BOOK	
QUANTITIES BY	
CHECKED BY	

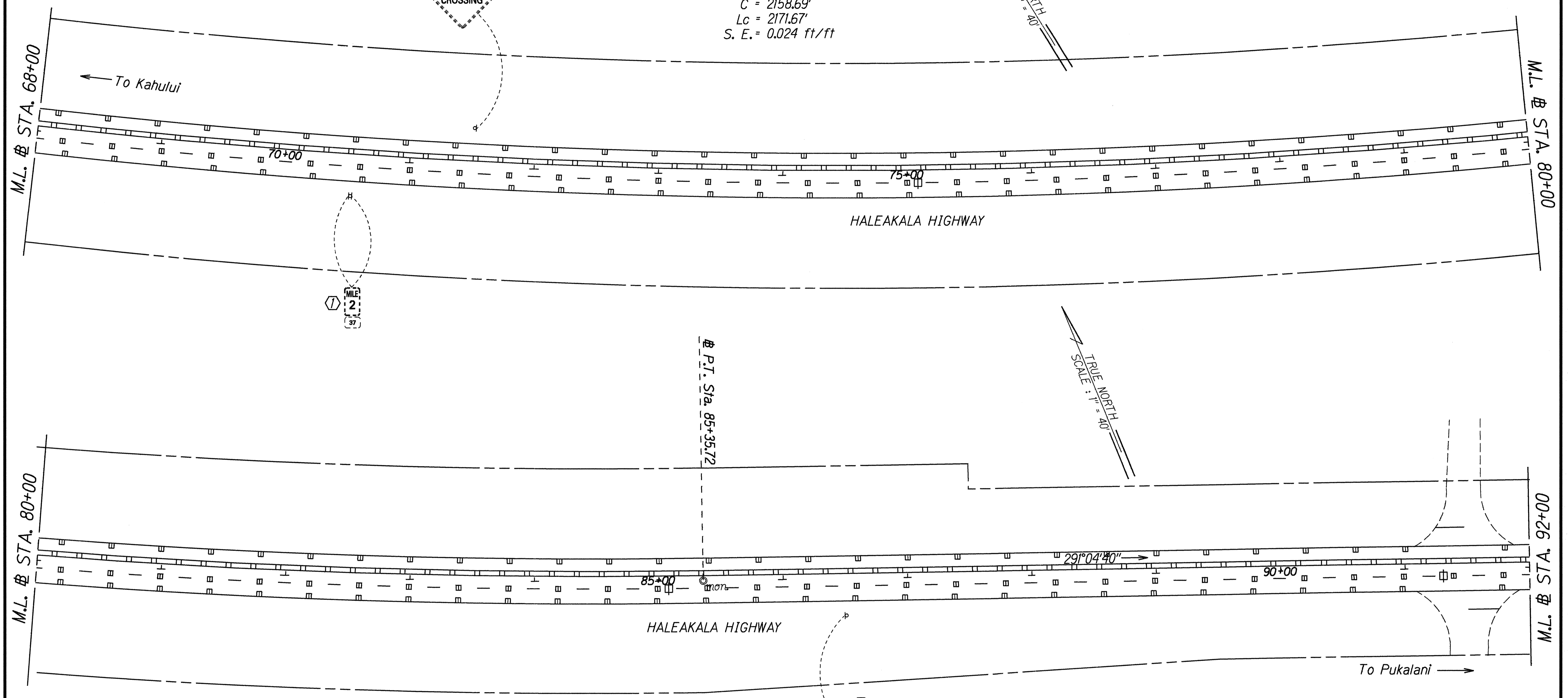
KEY:  
 Ⓛ Exist. Sign(s) & Post(s) to Remain

STATE OF HAWAII  
 DEPARTMENT OF TRANSPORTATION  
 HIGHWAYS DIVISION  
**SIGNING & PAVEMENT MARKING PLAN**  
 HALEAKALA HIGHWAY,  
 HANA HIGHWAY AND MOKULELE HIGHWAY  
 PAVEMENT MARKING AND STRIPING  
 Project No. HWY-M-04-99M  
 Scale: 1" = 40' Date: January, 1999

FED. ROAD DIST. NO.	STATE	PROJ. NO.	FISCAL YEAR	SHEET NO.	TOTAL SHEETS
HAWAII	HAW.	HWY-M-04-99M	1999	11	36

**⊕ CURVE DATA**  
 $\Delta = 21^{\circ}43'00''$   
 $R = 5729.58'$   
 $T = 1099.02'$   
 $C = 2158.69'$   
 $Lc = 2171.67'$   
 $S. E. = 0.024 \text{ ft/ft}$

TRUE NORTH  
 SCALE: 1" = 40'

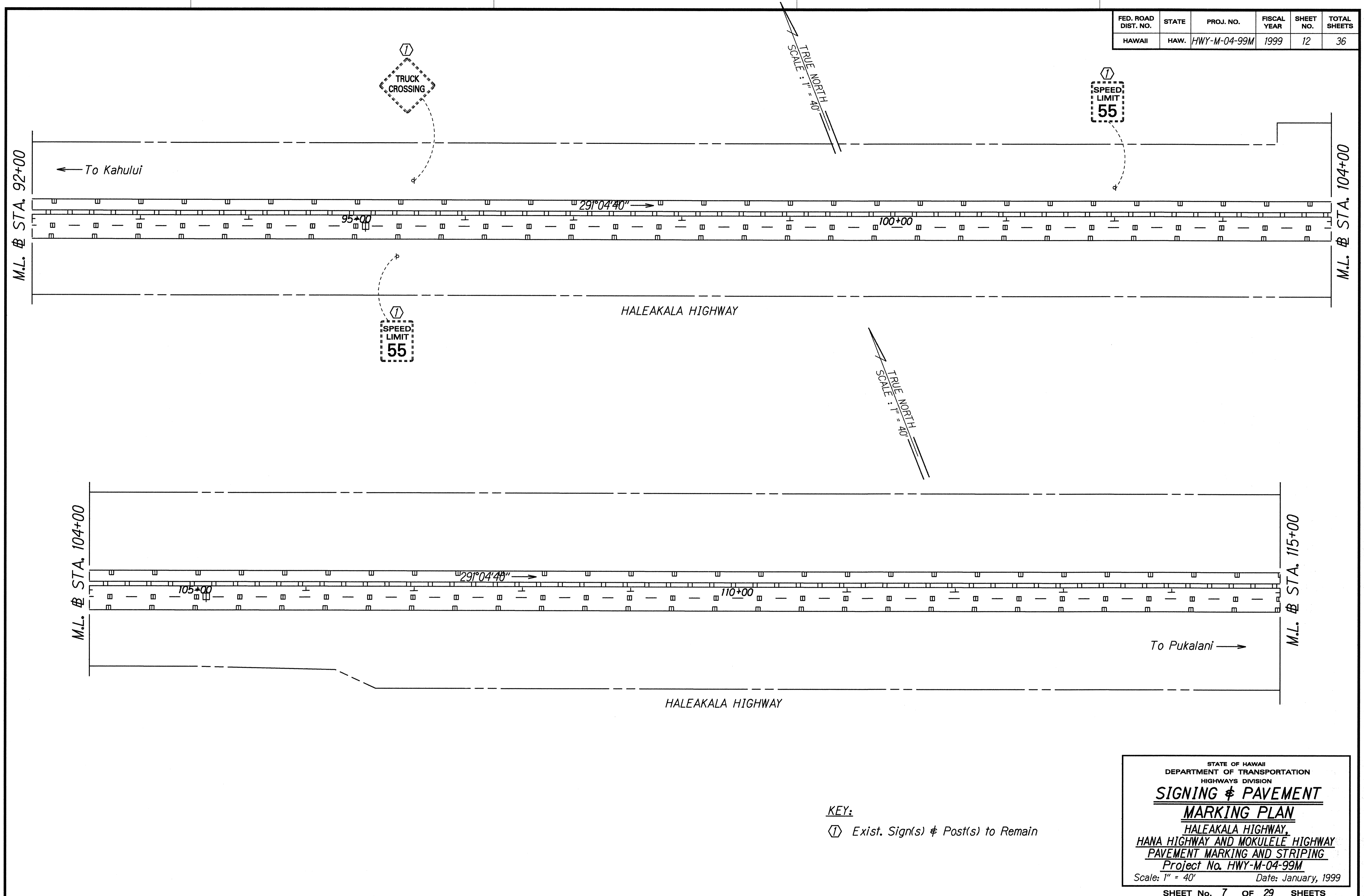


SURVEY PLOTTED BY	DATE
DRAWN BY	
TRACED BY	
NOTED BY	
QUANTITIES BY	
CHECKED BY	

**KEY:**  
 ⊕ Exist. Sign(s) & Post(s) to Remain

STATE OF HAWAII  
 DEPARTMENT OF TRANSPORTATION  
 HIGHWAYS DIVISION  
**SIGNING & PAVEMENT MARKING PLAN**  
 HALEAKALA HIGHWAY,  
 HANA HIGHWAY AND MOKULELE HIGHWAY  
 PAVEMENT MARKING AND STRIPING  
 Project No. HWY-M-04-99M  
 Scale: 1" = 40' Date: January, 1999

FED. ROAD DIST. NO.	STATE	PROJ. NO.	FISCAL YEAR	SHEET NO.	TOTAL SHEETS
HAWAII	HAW.	HWY-M-04-99M	1999	12	36

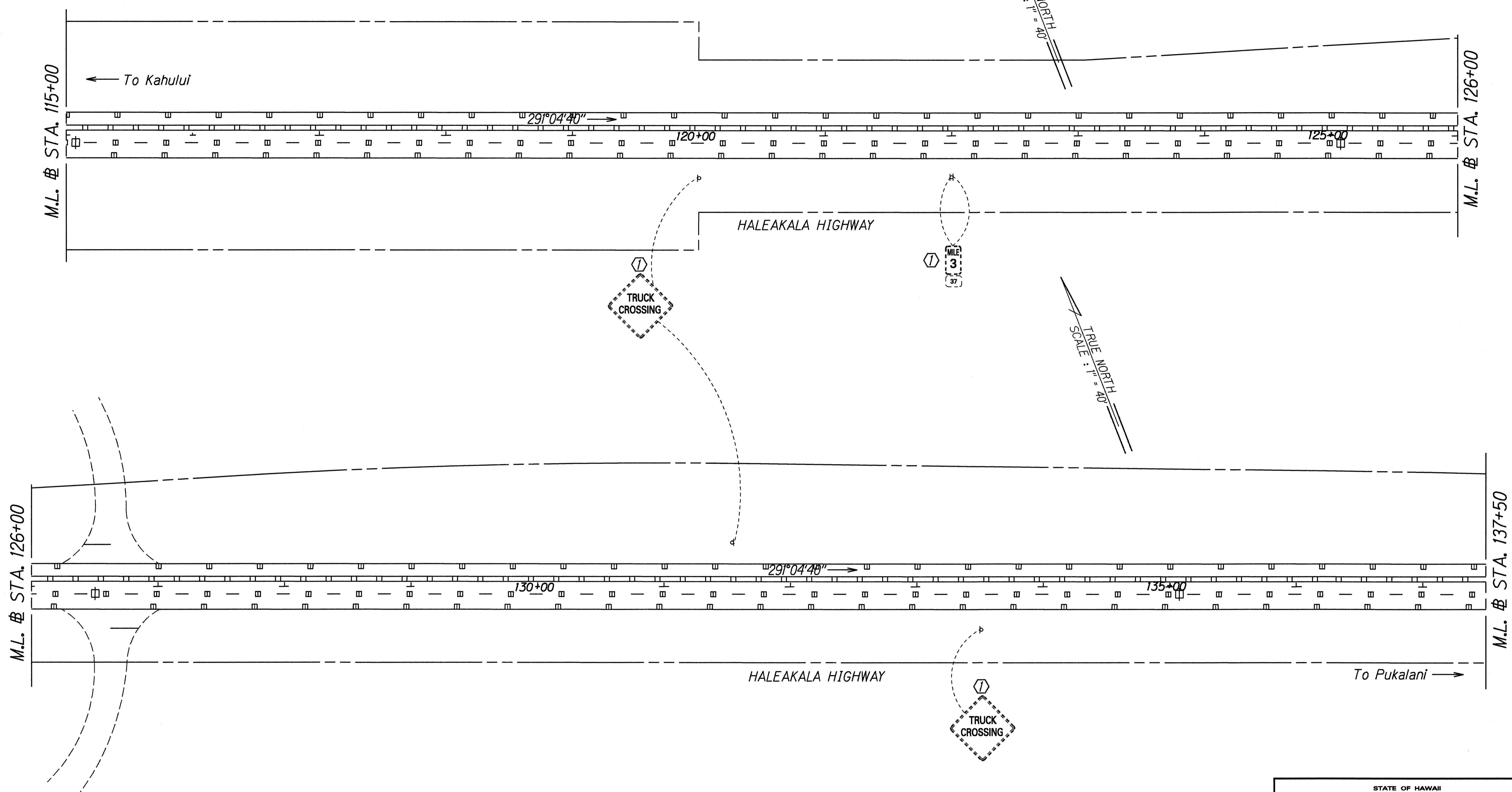


ORIGINAL PLAN	SURVEY PLOTTED BY	DATE
TRACED BY		
NOTED BY		
DESIGNED BY		
CHECKED BY		

**KEY:**  
 Ⓢ Exist. Sign(s) & Post(s) to Remain

STATE OF HAWAII  
 DEPARTMENT OF TRANSPORTATION  
 HIGHWAYS DIVISION  
**SIGNING & PAVEMENT MARKING PLAN**  
 HALEAKALA HIGHWAY,  
 HANA HIGHWAY AND MOKULELE HIGHWAY  
 PAVEMENT MARKING AND STRIPING  
 Project No. HWY-M-04-99M  
 Scale: 1" = 40' Date: January, 1999

FED. ROAD DIST. NO.	STATE	PROJ. NO.	FISCAL YEAR	SHEET NO.	TOTAL SHEETS
HAWAII	HAW.	HWY-M-04-99M	1999	13	36

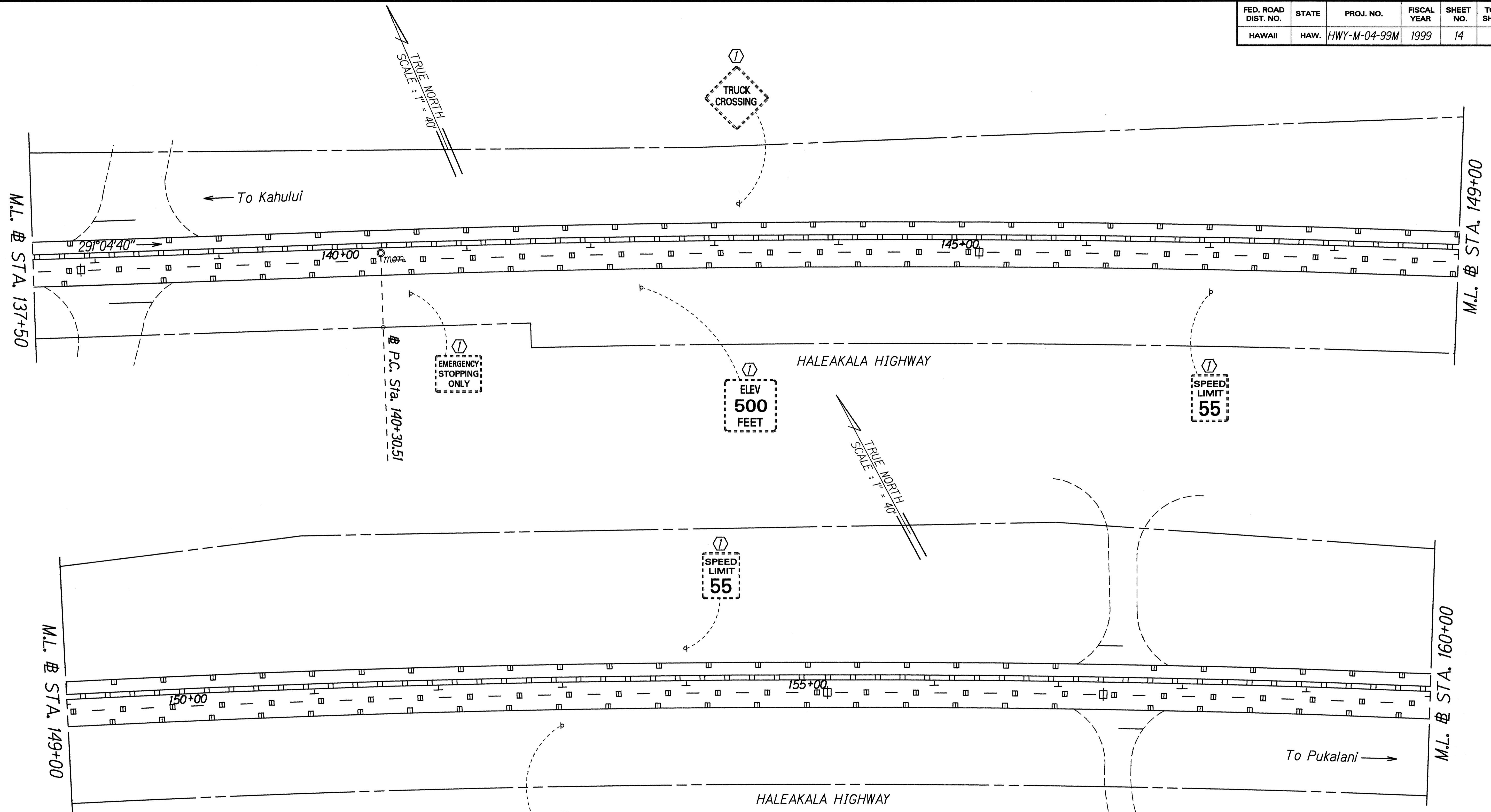


ORIGINAL PLAN	SURVEY PLOTTED BY	DATE
NOTE BOOK	DRAWN BY	Dec. 1998
QUANTITIES BY	TRACED BY	
CHECKED BY		

KEY:  
 Ⓛ Exist. Sign(s) & Post(s) to Remain

STATE OF HAWAII  
 DEPARTMENT OF TRANSPORTATION  
 HIGHWAYS DIVISION  
**SIGNING & PAVEMENT MARKING PLAN**  
 HALEAKALA HIGHWAY,  
 HANA HIGHWAY AND MOKULELE HIGHWAY  
 PAVEMENT MARKING AND STRIPING  
 Project No. HWY-M-04-99M  
 Scale: 1" = 40' Date: January, 1999  
 SHEET No. 8 OF 29 SHEETS

FED. ROAD DIST. NO.	STATE	PROJ. NO.	FISCAL YEAR	SHEET NO.	TOTAL SHEETS
HAWAII	HAW.	HWY-M-04-99M	1999	14	36



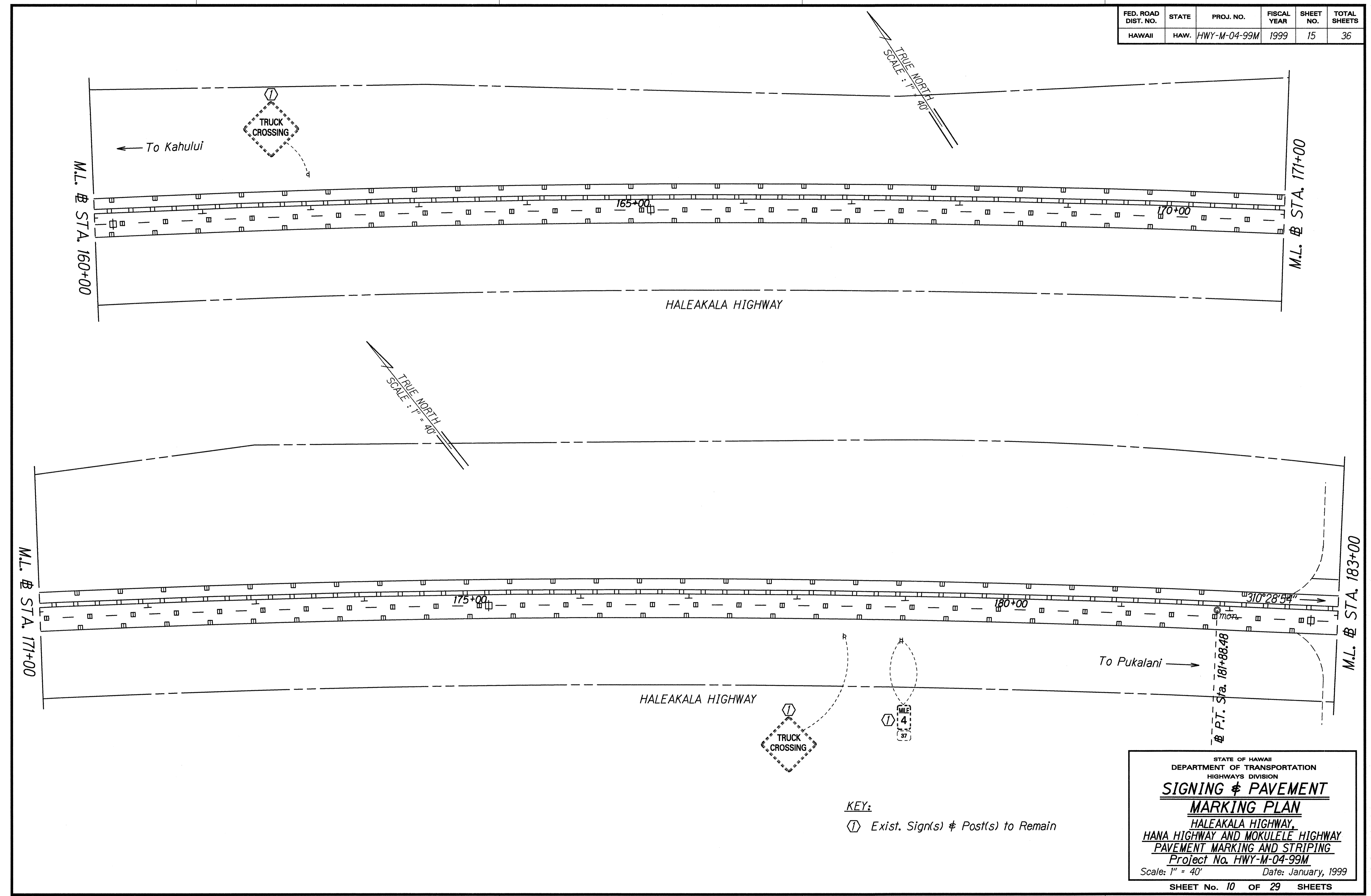
**⊕ CURVE DATA**  
 $\Delta = 19^\circ 24' 14''$   
 $R = 12,277.67'$   
 $T = 2099.09'$   
 $C = 4138.14'$   
 $Lc = 4157.98'$   
 $S. E. = 0.015 \text{ ft/ft}$

**KEY:**  
 Ⓛ Exist. Sign(s) & Post(s) to Remain

ORIGINAL PLAN	DATE
SURVEY PLOTTED BY	Dec. 1998
DRAWN BY	
NOTED BY	
DESIGNED BY	
CHECKED BY	

STATE OF HAWAII  
 DEPARTMENT OF TRANSPORTATION  
 HIGHWAYS DIVISION  
**SIGNING & PAVEMENT MARKING PLAN**  
 HALEAKALA HIGHWAY,  
 HANA HIGHWAY AND MOKULELE HIGHWAY  
 PAVEMENT MARKING AND STRIPING  
 Project No. HWY-M-04-99M  
 Scale: 1" = 40' Date: January, 1999

FED. ROAD DIST. NO.	STATE	PROJ. NO.	FISCAL YEAR	SHEET NO.	TOTAL SHEETS
HAWAII	HAW.	HWY-M-04-99M	1999	15	36

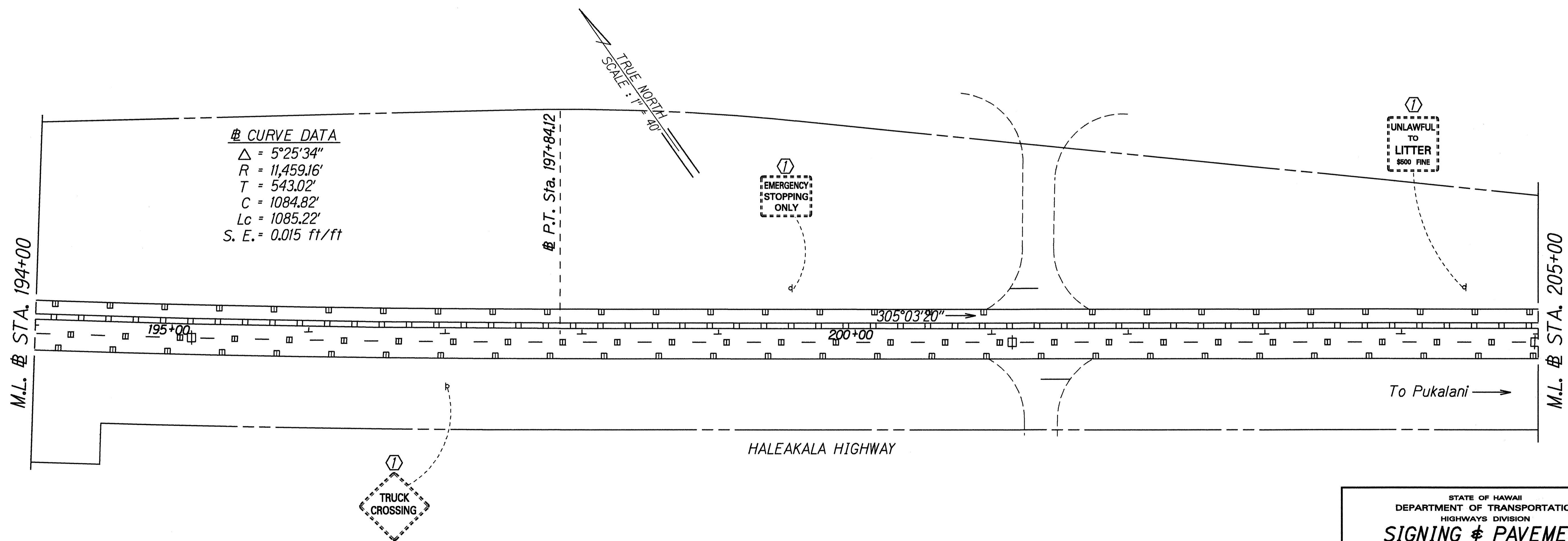
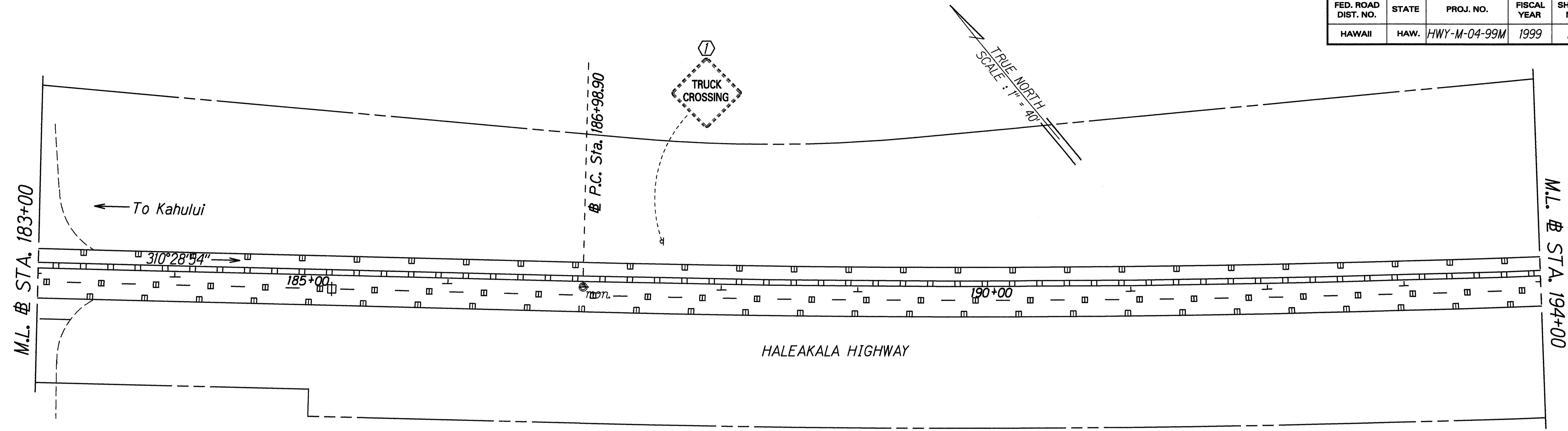


ORIGINAL PLAN	DATE
SURVEY PLOTTED BY	Dec. 1998
DRAWN BY	
TRACED BY	
NOTE BOOK	
QUANTITIES BY	
CHECKED BY	

**KEY:**  
 (1) Exist. Sign(s) & Post(s) to Remain

STATE OF HAWAII  
 DEPARTMENT OF TRANSPORTATION  
 HIGHWAYS DIVISION  
**SIGNING & PAVEMENT MARKING PLAN**  
 HALEAKALA HIGHWAY,  
 HANA HIGHWAY AND MOKULELE HIGHWAY  
 PAVEMENT MARKING AND STRIPING  
 Project No. HWY-M-04-99M  
 Scale: 1" = 40' Date: January, 1999  
 SHEET No. 15 OF 29 SHEETS

FED. ROAD DIST. NO.	STATE	PROJ. NO.	FISCAL YEAR	SHEET NO.	TOTAL SHEETS
HAWAII	HAW.	HWY-M-04-99M	1999	16	36

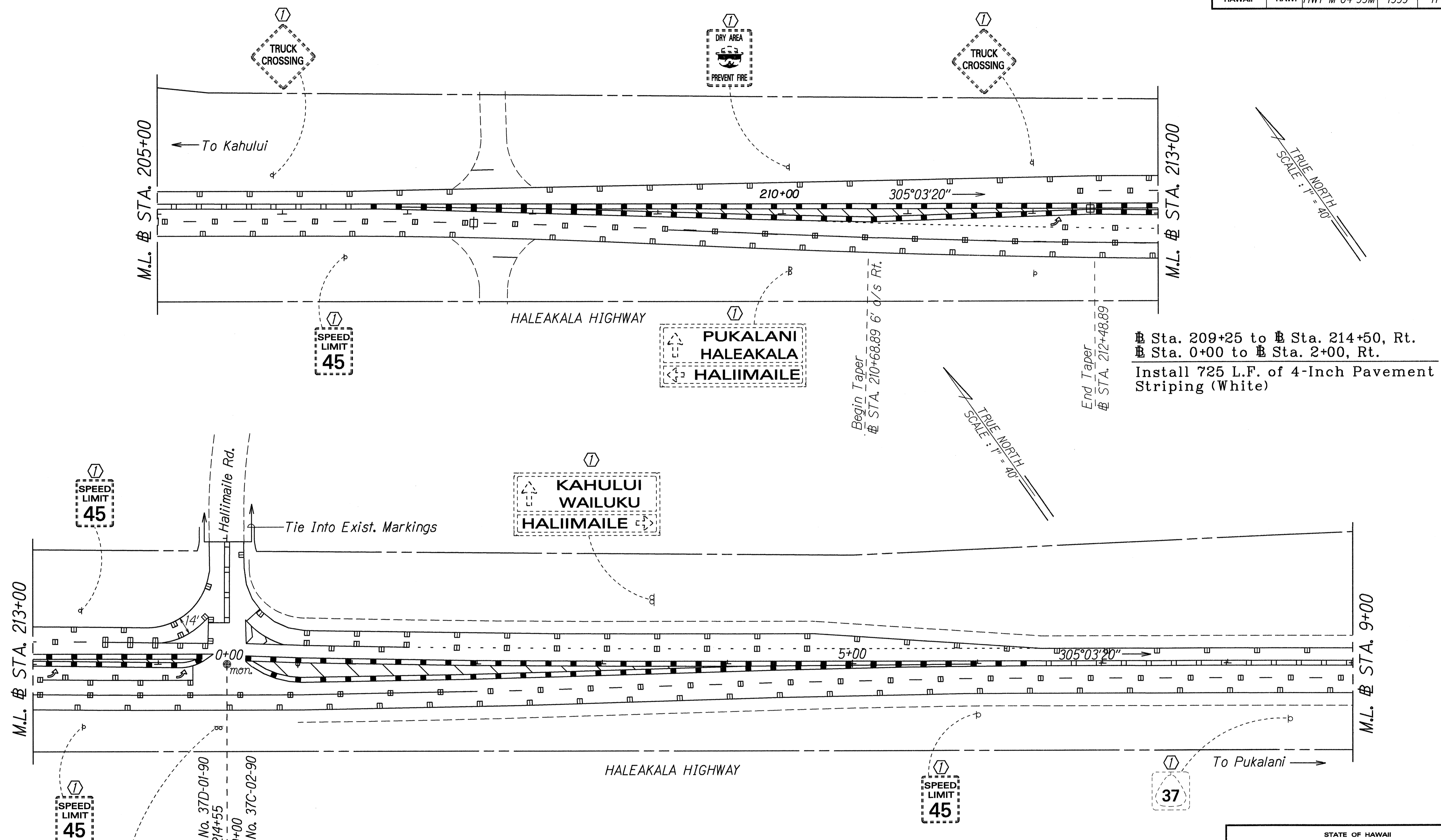


SURVEY PLATTED BY	DATE
DRAWN BY	Dec. 1998
NOTES BY	
CHECKED BY	

KEY:  
 (1) Exist. Sign(s) & Post(s) to Remain

STATE OF HAWAII  
 DEPARTMENT OF TRANSPORTATION  
 HIGHWAYS DIVISION  
**SIGNING & PAVEMENT MARKING PLAN**  
 HALEAKALA HIGHWAY,  
 HANA HIGHWAY AND MOKULELE HIGHWAY  
 PAVEMENT MARKING AND STRIPING  
 Project No. HWY-M-04-99M  
 Scale: 1" = 40' Date: January, 1999

FED. ROAD DIST. NO.	STATE	PROJ. NO.	FISCAL YEAR	SHEET NO.	TOTAL SHEETS
HAWAII	HAW.	HWY-M-04-99M	1999	17	36



# Sta. 209+25 to # Sta. 214+50, Rt.  
 # Sta. 0+00 to # Sta. 2+00, Rt.  
 Install 725 L.F. of 4-Inch Pavement Striping (White)

M.L. # STA. 213+00

Proj. No. 37D-01-90  
 Sta. 214+55

Proj. No. 37C-02-90  
 Sta. 0+00

**LEGEND FOR AS-BUILT POSTINGS**

	Squiggly line for as-built deletion
	Double line for as-built deletion
Roadway	Text for as-built posting

KEY:  
 (1) Exist. Sign(s) & Post(s) to Remain

STATE OF HAWAII  
 DEPARTMENT OF TRANSPORTATION  
 HIGHWAYS DIVISION

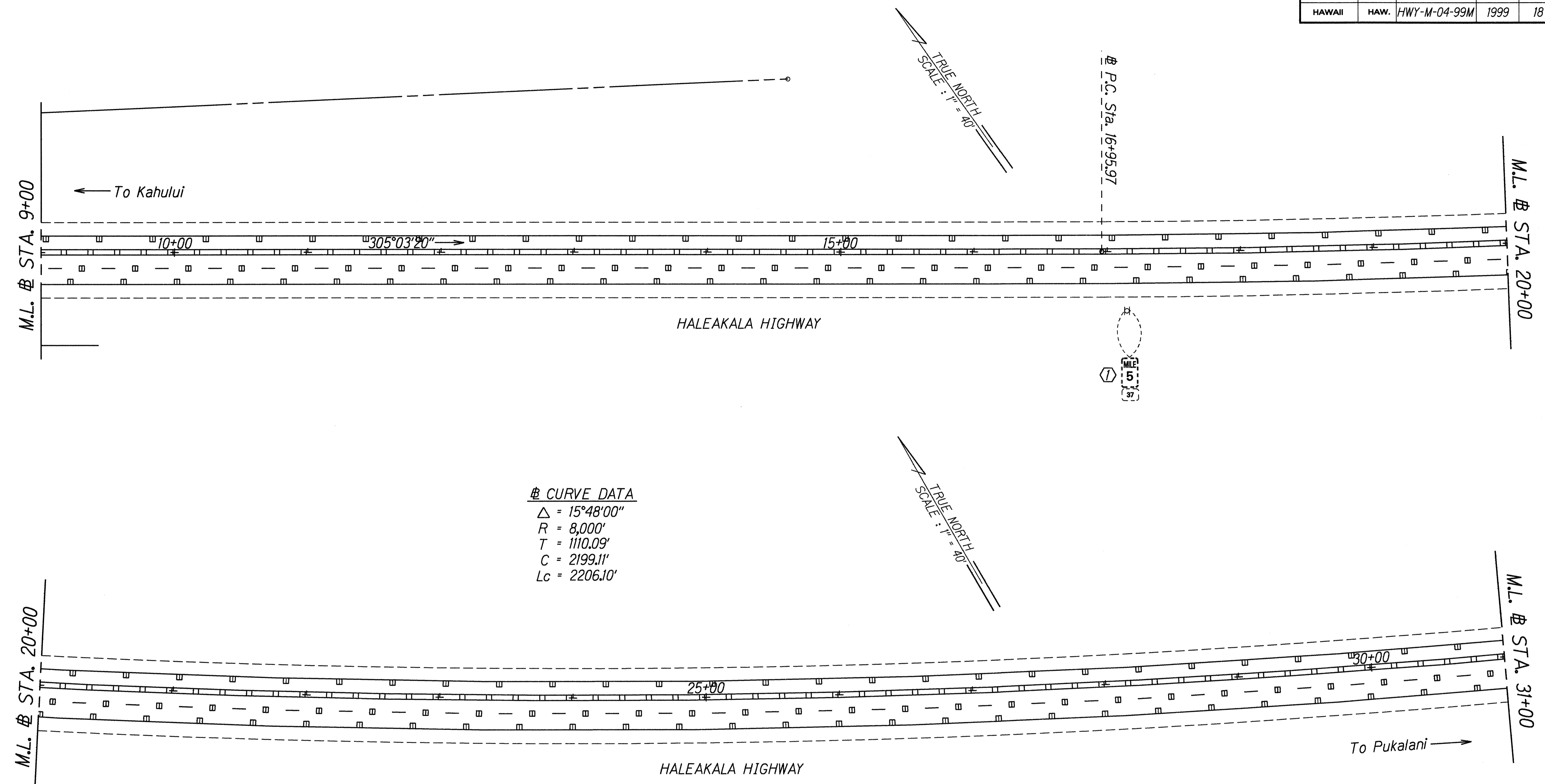
**SIGNING & PAVEMENT MARKING PLAN**

HALEAKALA HIGHWAY,  
 HANA HIGHWAY AND MOKULELE HIGHWAY  
 PAVEMENT MARKING AND STRIPING  
 Project No. HWY-M-04-99M  
 Scale: 1" = 40' Date: January, 1999

SHEET No. 12 OF 29 SHEETS

SURVEY PLOTTED BY	DATE
DRAWN BY	Dec. 1995
TRACED BY	
DESIGNED BY	
CHECKED BY	

FED. ROAD DIST. NO.	STATE	PROJ. NO.	FISCAL YEAR	SHEET NO.	TOTAL SHEETS
HAWAII	HAW.	HWY-M-04-99M	1999	18	36

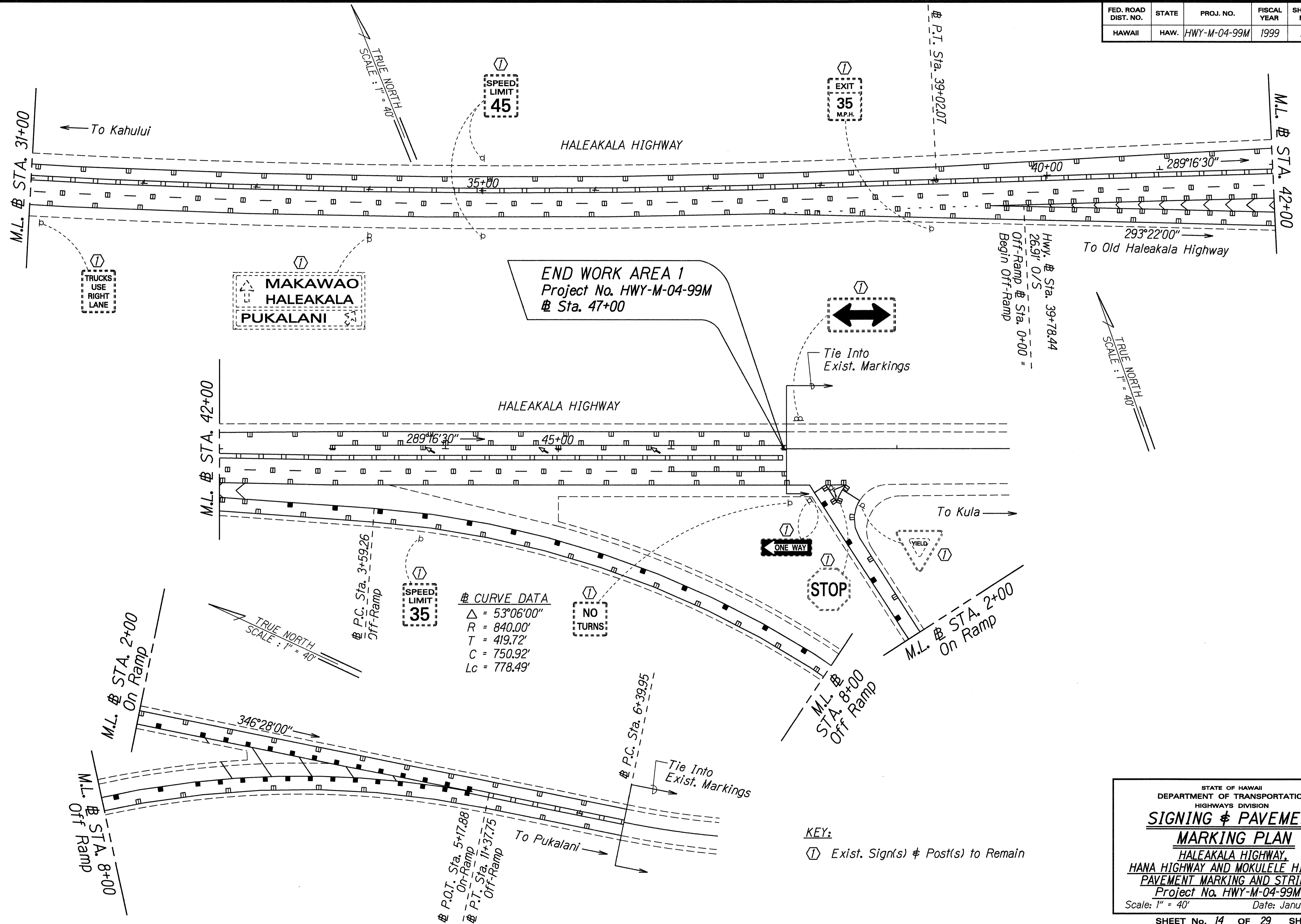


ORIGINAL PLAN	SURVEY PLOTTED BY	DATE
NOTE BOOK	DRAWN BY	Dec. 1998
QUANTITIES BY	CHECKED BY	

KEY:  
 (1) Exist. Sign(s) & Post(s) to Remain

STATE OF HAWAII  
 DEPARTMENT OF TRANSPORTATION  
 HIGHWAYS DIVISION  
**SIGNING & PAVEMENT**  
**MARKING PLAN**  
 HALEAKALA HIGHWAY,  
 HANA HIGHWAY AND MOKULELE HIGHWAY  
 PAVEMENT MARKING AND STRIPING  
 Project No. HWY-M-04-99M  
 Scale: 1" = 40'      Date: January, 1999

FED. ROAD DIST. NO.	STATE	PROJ. NO.	FISCAL YEAR	SHEET NO.	TOTAL SHEETS
HAWAII	HAW.	HWY-M-04-99M	1999	19	36



**△ CURVE DATA**  
 $\Delta = 53^{\circ}06'00''$   
 $R = 840.00'$   
 $T = 419.72'$   
 $C = 750.92'$   
 $L_c = 778.49'$

**KEY:**  
 Ⓛ Exist. Sign(s) & Post(s) to Remain

SURVEY PLOTTED BY	DATE
DRAWN BY	Dec. 1998
TRACED BY	
NOTE BOOK	
QUANTITIES BY	
CHECKED BY	

STATE OF HAWAII  
 DEPARTMENT OF TRANSPORTATION  
 HIGHWAYS DIVISION  
**SIGNING & PAVEMENT MARKING PLAN**  
 HALEAKALA HIGHWAY,  
 HANA HIGHWAY AND MOKULELE HIGHWAY  
 PAVEMENT MARKING AND STRIPING  
 Project No. HWY-M-04-99M  
 Scale: 1" = 40' Date: January, 1999  
 SHEET No. 14 OF 29 SHEETS