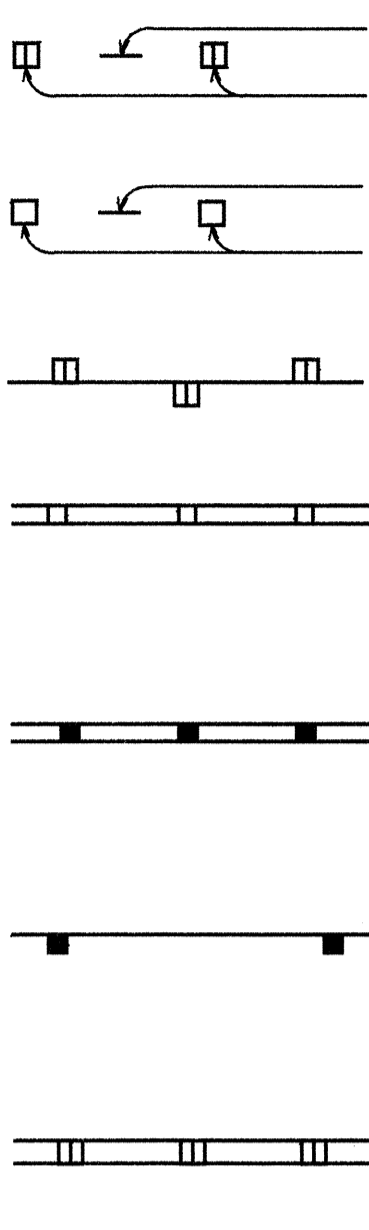


FED. ROAD DIST. NO.	STATE	PROJ. NO.	FISCAL YEAR	SHEET NO.	TOTAL SHEETS
HAWAII	HAW.	HWY-M-04-99M	1999	5	36

LEGEND



4 each Type A Raised Pavement Markers
Type C Raised Pavement Markers @ 40'-0" o.c.

4 each Type J Raised Pavement Markers
Type D Raised Pavement Markers @ 40'-0" o.c.

8" White Stripe with Type C Raised Pavement Markers @ 20'-0" o.c. (Thermoplastic)

4" Double Solid Yellow with Type D Raised Pavement Markers @ 20'-0" o.c. (Thermoplastic)

4" Double Solid Yellow Stripes with Type H Raised Pavement Markers @ 20'-0" o.c. (Thermoplastic)

4" Yellow Edge Stripe with Type H Raised Pavement Markers @ 40'-0" o.c. (Thermoplastic)

4" Double Solid White Stripes with Type C Raised Pavement Markers @ 20'-0" o.c. (Thermoplastic)

Lane Change Restriction Marking
4 each Type A Raised Pavement Markers Unless Noted Otherwise in The Plans
Type C Raised Pavement Markers @ 20'-0" o.c.
4" White Stripe (Thermoplastic)

4" or 8" White Edge Stripe with Type C Raised Pavement Markers @ 40'-0" o.c. (Thermoplastic)

4" White Guide Lines (Thermoplastic)

Transverse Median Marking (Thermoplastic)

Transverse Shoulder Marking (Thermoplastic)

Channelizing Island or Deceleration Lane Gore (Thermoplastic)

Crosswalk and Stop Line. All Stop Lines shall be 10'-0" from Crosswalk unless otherwise noted. The circled number indicates the number of lanes for payment (Thermoplastic)

Pavement Arrow (Thermoplastic)

STOP

Pavement Word (Thermoplastic)

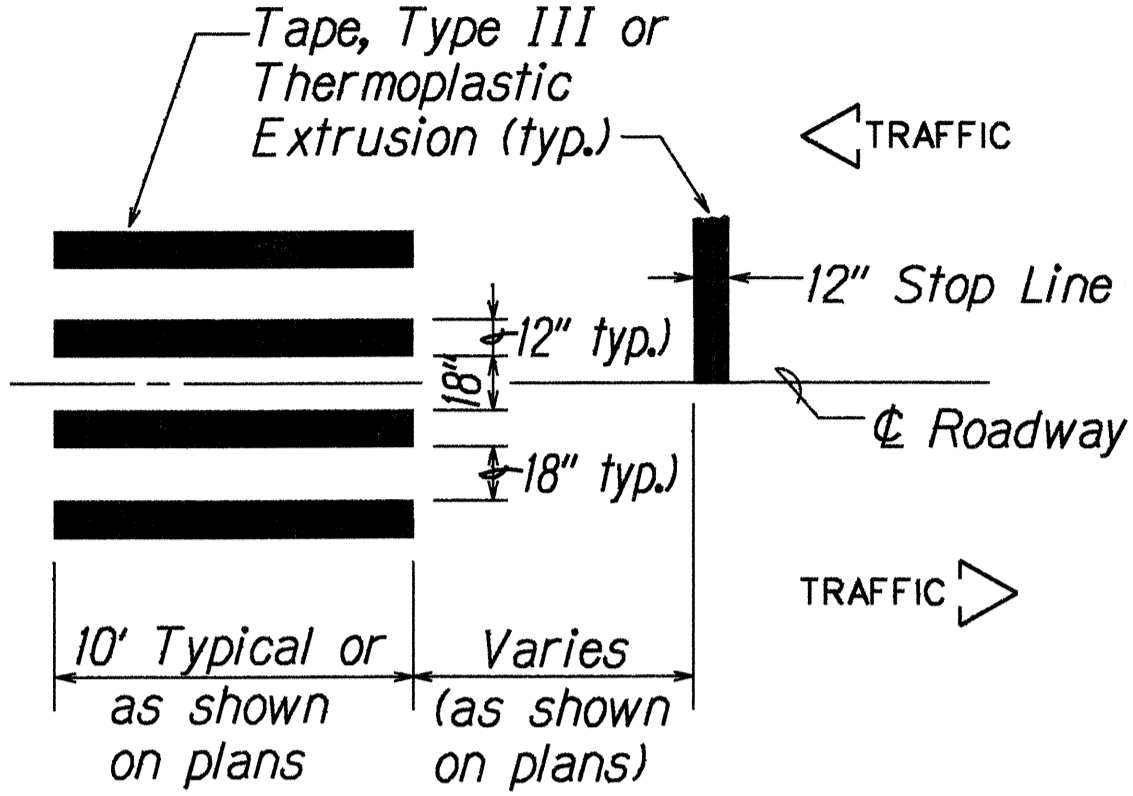
4 Each Type J Raised Pavement Markers
Type D Raised Pavement Markers @ 40'-0" o.c.
Type H Raised Pavement Markers (Reflective Surface facing no-passing direction)
4" Single Solid Yellow Stripe (Thermoplastic)

Extension of Edge Line, 4" Wide x 2'-0" Long White Stripe @ 10'-0" o.c. w/Type C Markers @ 40'-0" o.c. (Thermoplastic)

Contra-flow Sign Sleeve

GENERAL NOTES

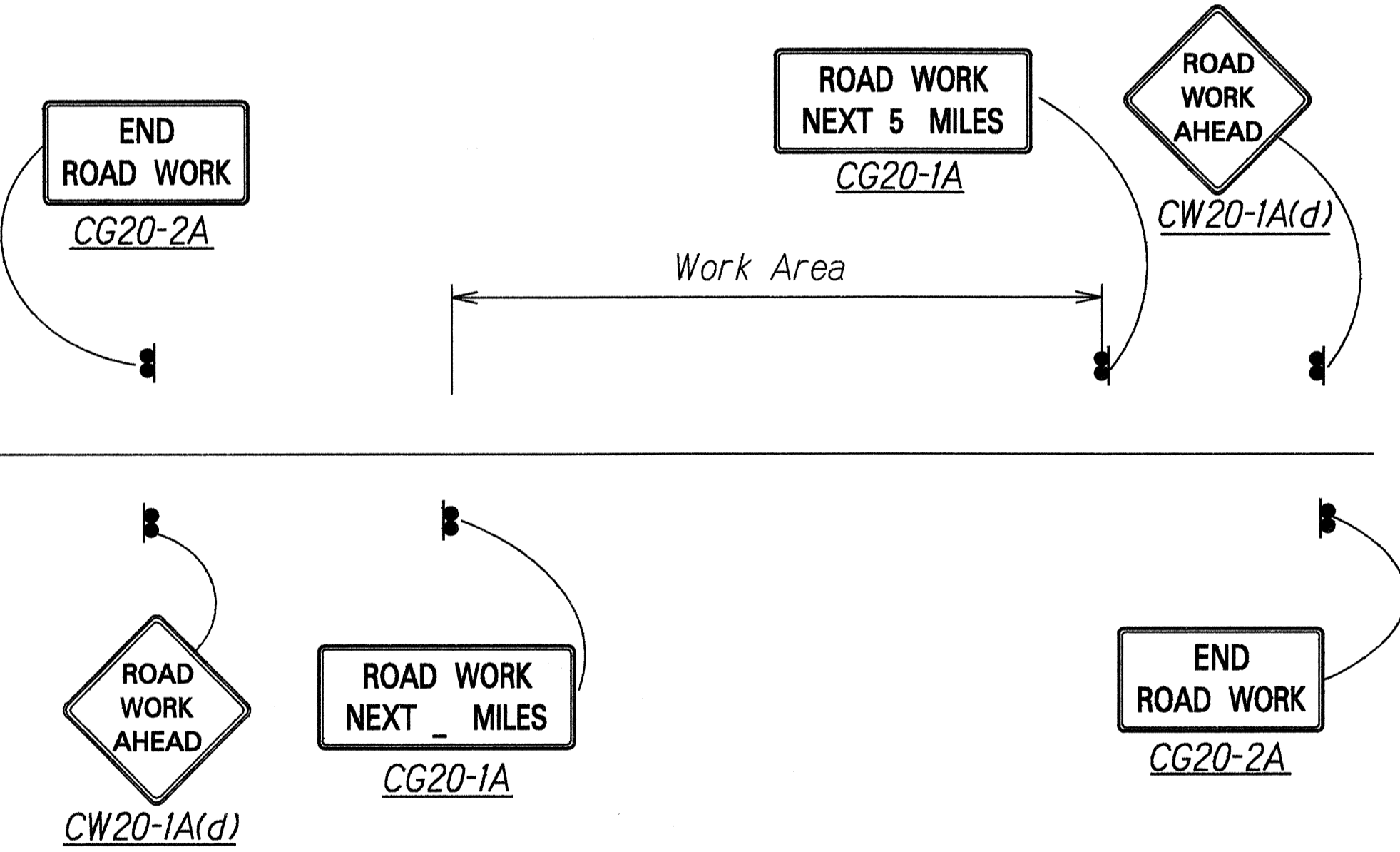
1. This project will cover portions of Haleakala Highway, Mokulele Highway and Hana Highway. The scope of work for this project consists of installing pavement striping, raised pavement markers, pavement arrows and pavement words.
2. The Contractor is reminded of the requirements of Subsection 108.01 - Subletting of Contract, which requires him perform work amounting to not less than 50 percent of the total contract cost less deductible items. Non-compliance with this Subsection may be grounds for rejection of bid.
3. The Contractor's attention is directed to the following Sections of the Special Provisions: Subsection 107.J3 - Public Convenience and Safety; Subsection 107.21 - Contractor's Responsibility For Utility Property And Services; and Section 645 - Traffic Control.
4. At the end of each day's work, the Contractor shall remove all equipment and other obstructions to permit free and safe passage of public traffic.
5. The Contractor shall notify the Engineer in writing two (2) weeks before commencement of work.
6. The Contractor shall remove and dispose of all existing raised pavement markers prior to the pavement striping. This work shall be considered incidental to the various pavement marking items and will not be paid for separately.
7. Layout of pavement markings and striping shall be done by the Contractor and approved by the Engineer prior to any installation work.
8. Existing pavement markings not incorporated in the final traffic pattern shall be removed as directed by the Engineer. Costs shall be incidental to the various pavement marking items.
9. Final locations of all Stop Lines shall be approved by the Engineer prior to installation.
10. All pavement striping shall be as noted on the legend or plans.
11. All existing pavement stripes made of tape shall be eradicated prior to the application of thermoplastic. Eradication of tape shall be considered incidental to various pavement marking items and shall not be paid for separately.



DETAIL "A"

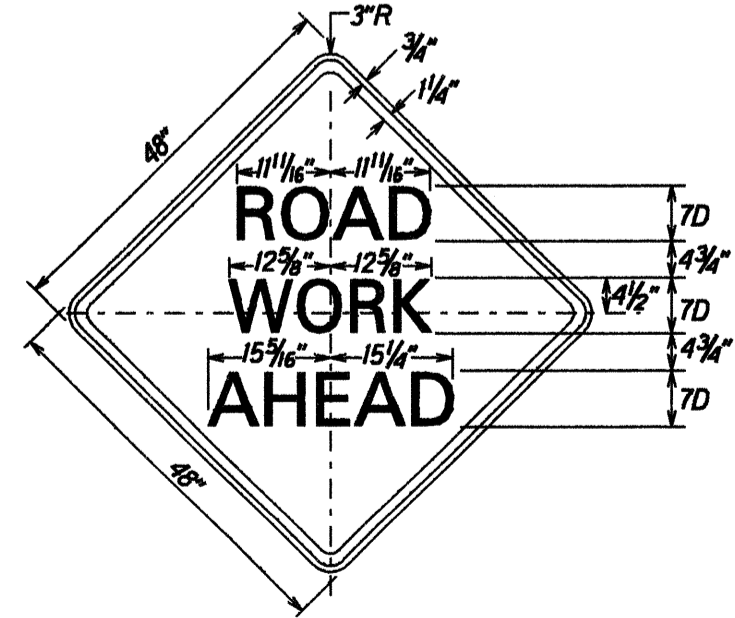
CROSSWALK STRIPING DETAIL

Not to Scale



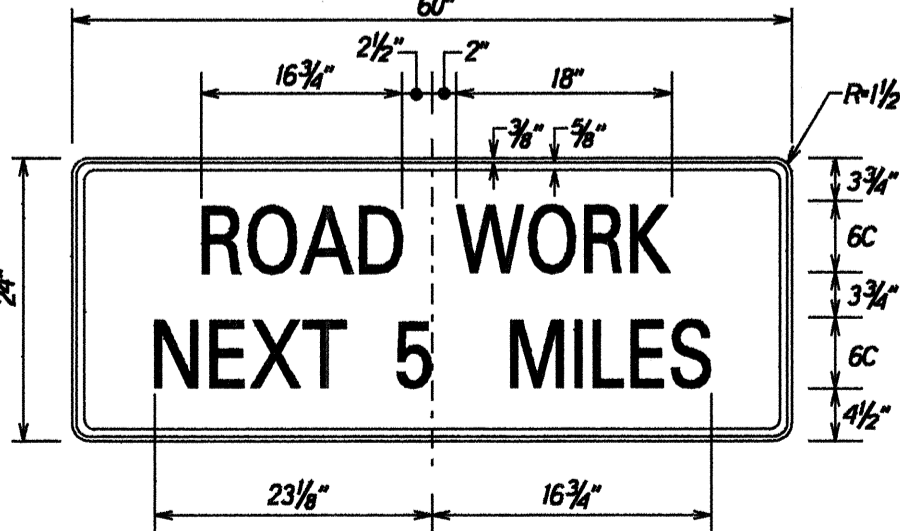
CONSTRUCTION SIGN LAYOUT DETAIL

Not to Scale



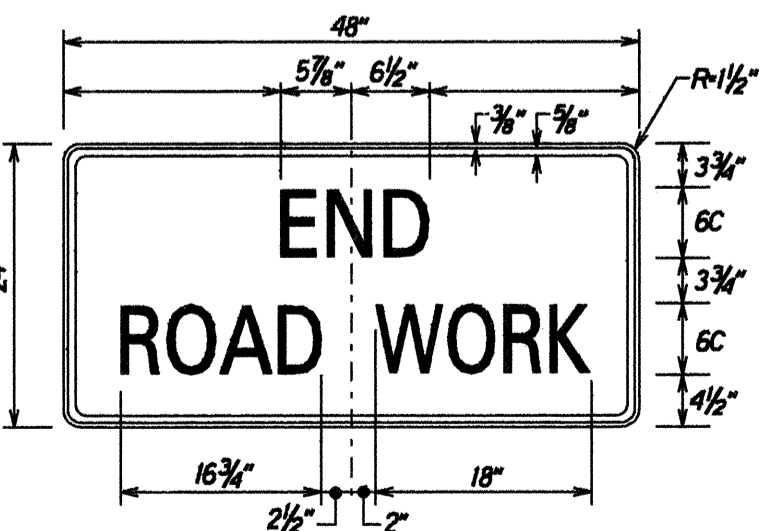
CW20-1A(d)
Scale: 1" = 1'-0"

Colors:
Legend: Black (Non Refl)
Background: Orange



CG20-1A
Scale: 1 1/2" = 1'-0"

Colors:
Legend: Black (Non Refl)
Background: Orange



CG20-2A
Scale: 1 1/2" = 1'-0"

Colors:
Legend: Black (Non Refl)
Background: Orange

STATE OF HAWAII
DEPARTMENT OF TRANSPORTATION
HIGHWAYS DIVISION

**PAVEMENT MARKING LEGEND,
DETAILS & GENERAL NOTES**

**HALEAKALA HIGHWAY,
HANA HIGHWAY AND MOKULELE HIGHWAY
PAVEMENT MARKING AND STRIPING**

Project No. HWY-M-04-99M

Scale: As Shown Date: January, 1999

SHEET No. 1 OF 1 SHEETS

SURVEY PLOTTED BY	DATE
DRAWN BY	Dec. 1999
NOTES BOOK	
QUANTITIES BY	
CHECKED BY	
ORIGINAL PLAN	