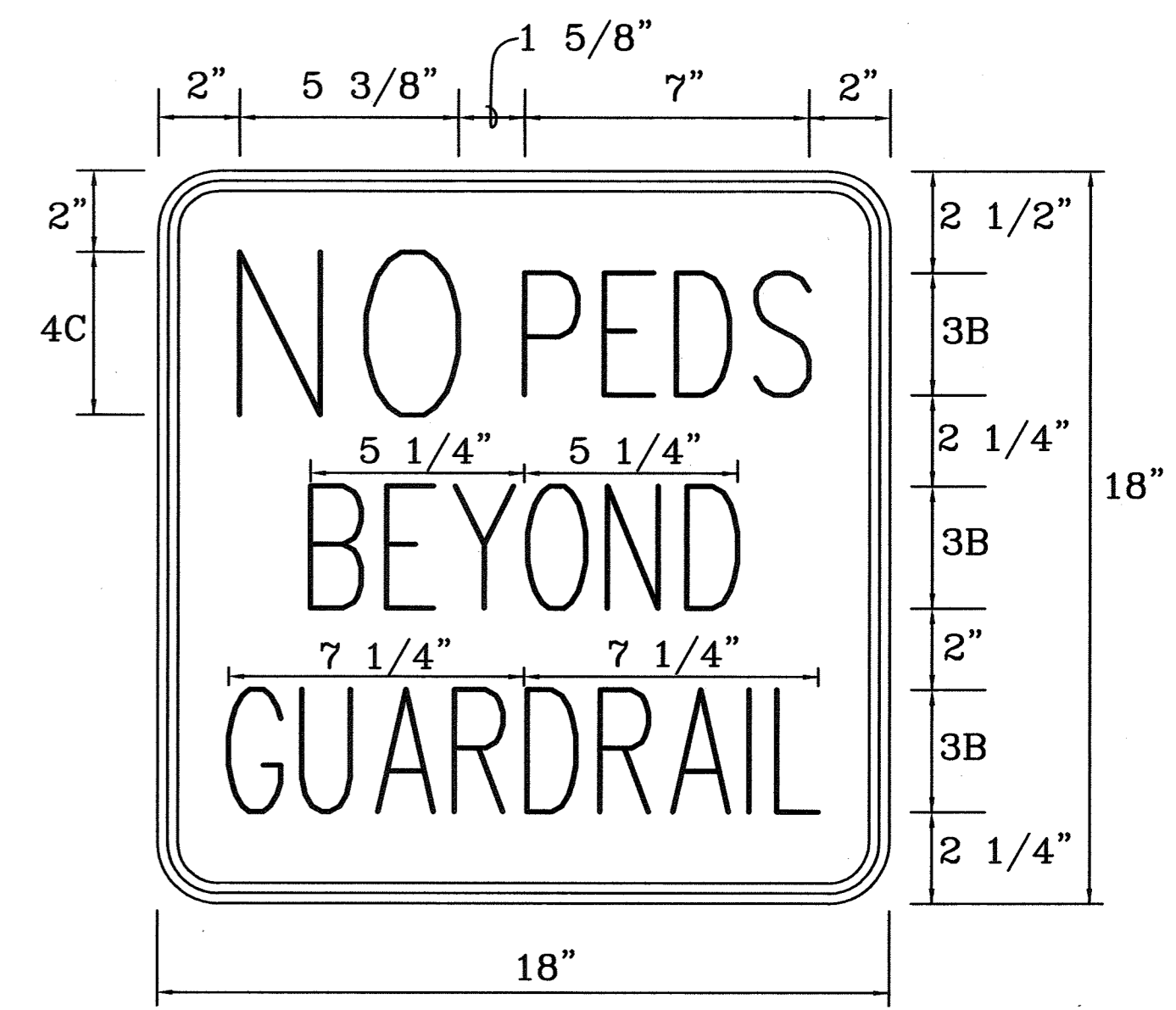
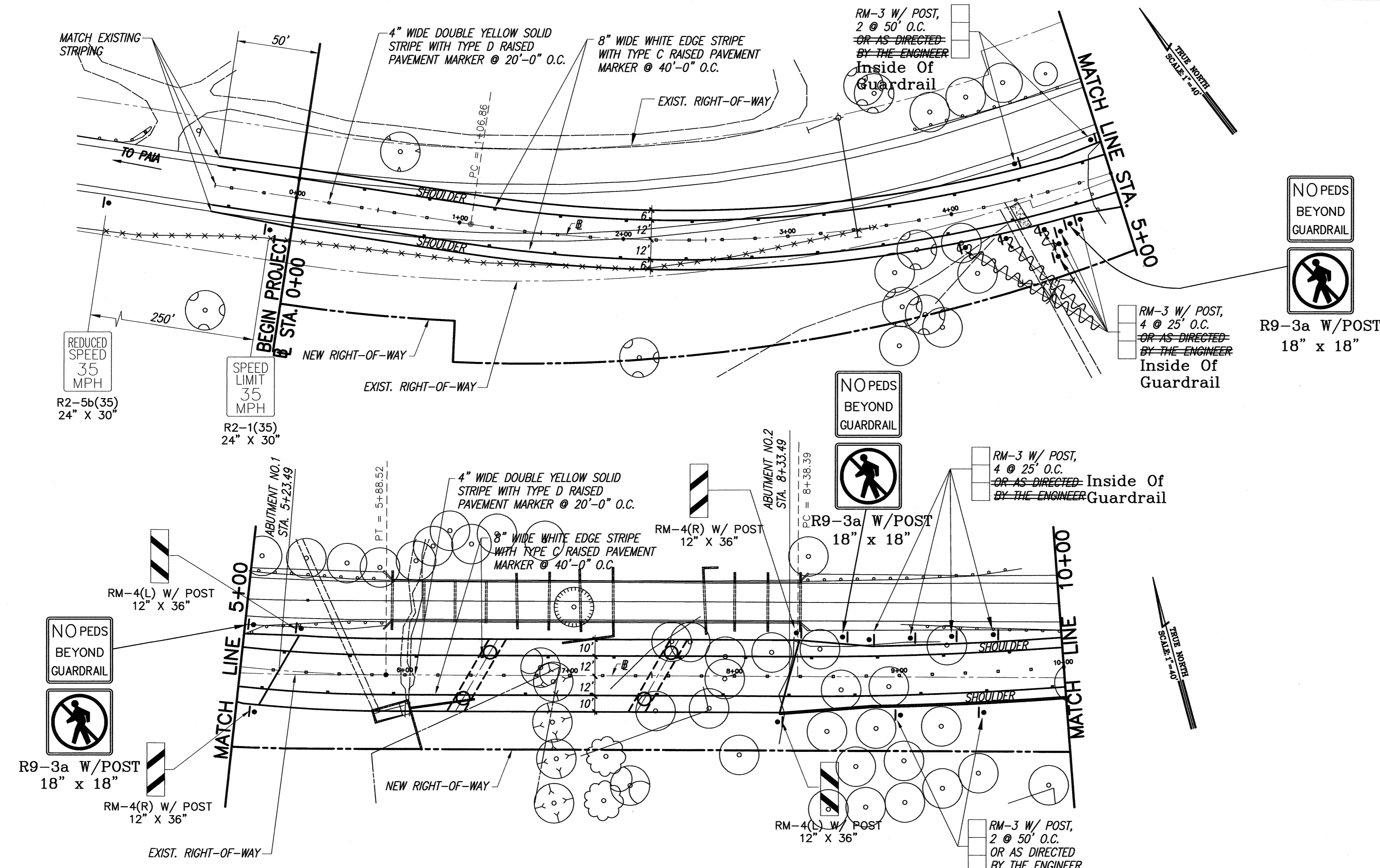


FED. ROAD DIST. NO.	STATE	FED. AID PROJ. NO.	FISCAL YEAR	SHEET NO.	TOTAL SHEETS
HAWAII	HAW.	BR-036-1(14)	2000	C.O.24	70



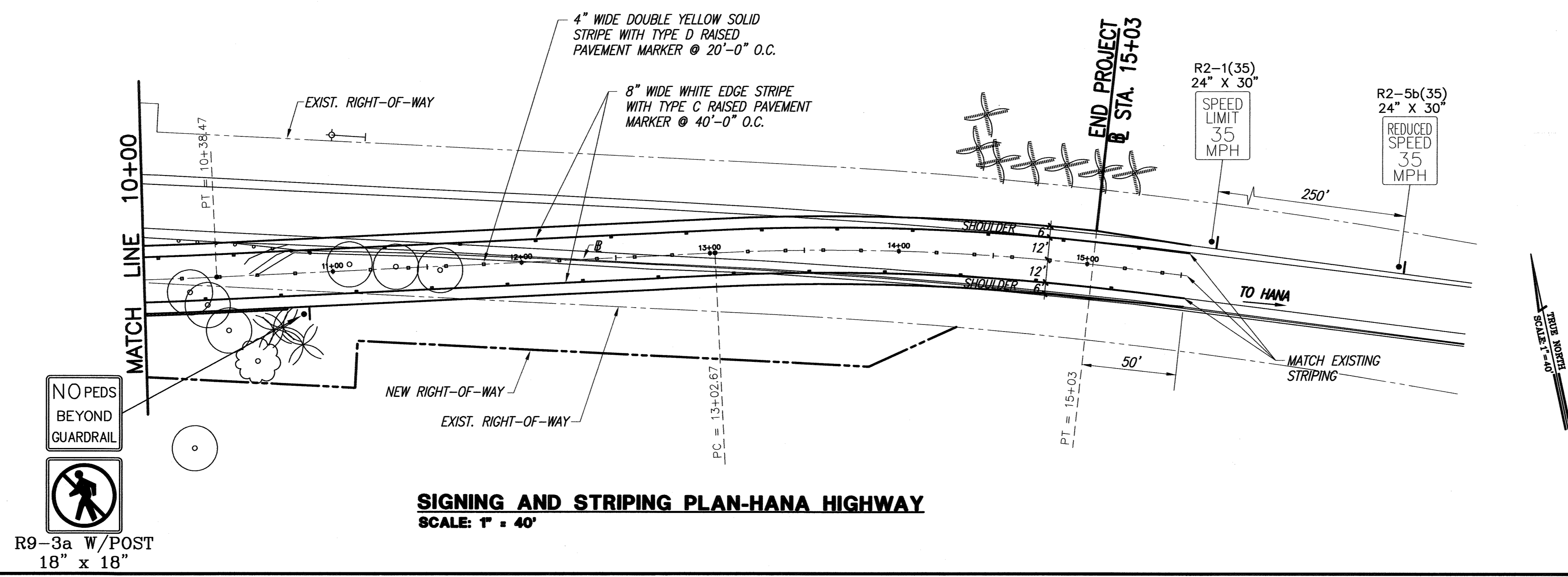
NO PEDS SIGN DETAIL
18" X 18"
NOT TO SCALE

LEGEND FOR AS-BUILT POSTINGS

	Squiggly line for as-built deletion
	Double line for as-built deletion
Roadway	Text for as-built posting

ORIGINAL PLAN	DATE
TRACED BY	
DESIGNED BY	
QUANTITIES BY	
CHECKED BY	
No.	

1:97-34 f:CO-STRIPING-HANA d:ESH-1 1=40 01/17/2001 SPA



SIGNING AND STRIPING PLAN-HANA HIGHWAY
SCALE: 1" = 40'

01/19/01	THIS SHT. REPLACED ORIGINAL SHT.
DATE	REVISION
STATE OF HAWAII DEPARTMENT OF TRANSPORTATION HIGHWAYS DIVISION	
SIGNING AND STRIPING-HANA HIGHWAY	
HANA HIGHWAY REPLACEMENT OF UAQA BRIDGE AND APPROACHES DISTRICT OF MAKAWAO Federal-Aid Project No. BR-036-1(14)	
Scale: As Noted	Date: May, 1999
SHEET No. C-22 OF 42 SHEETS	