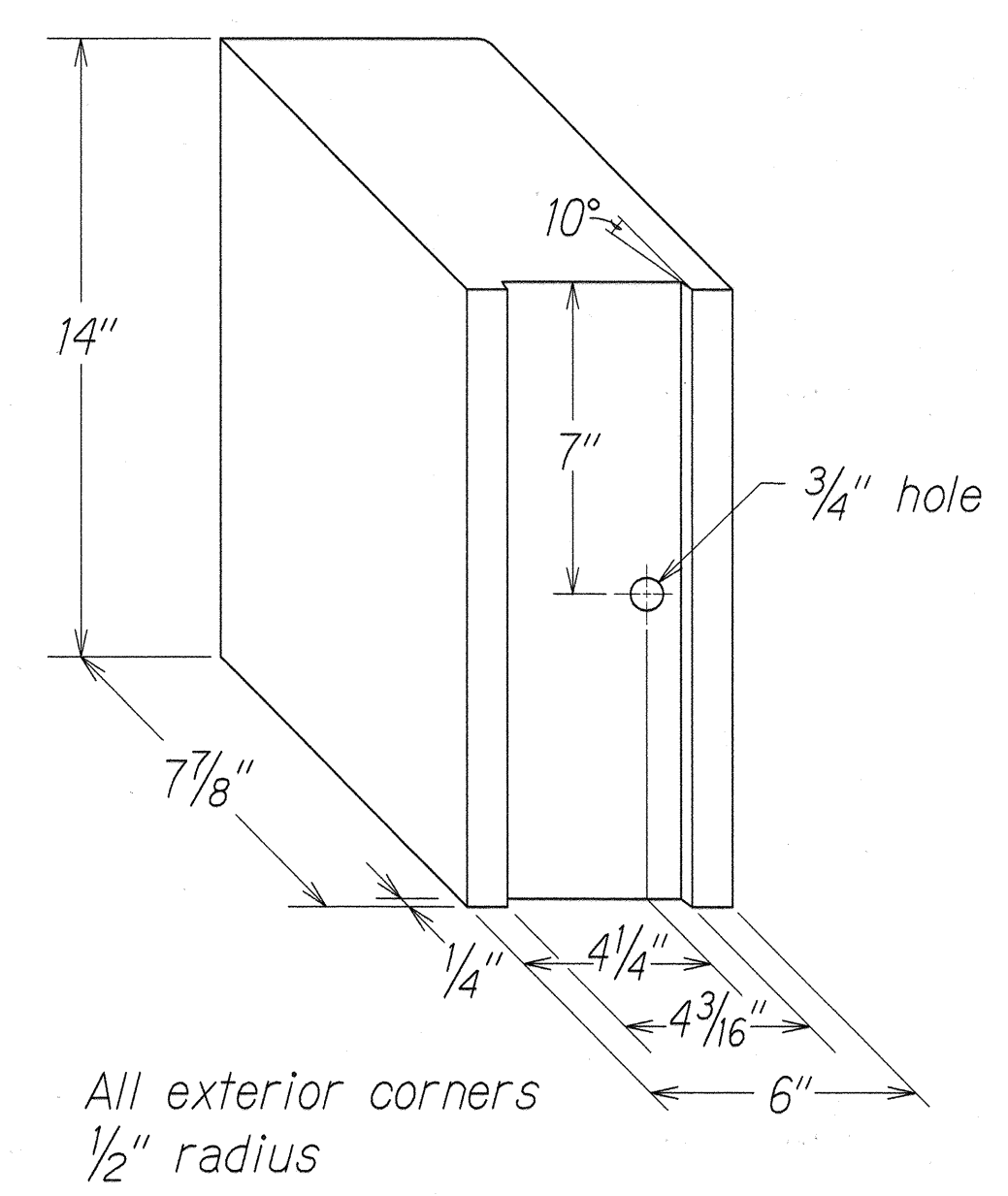
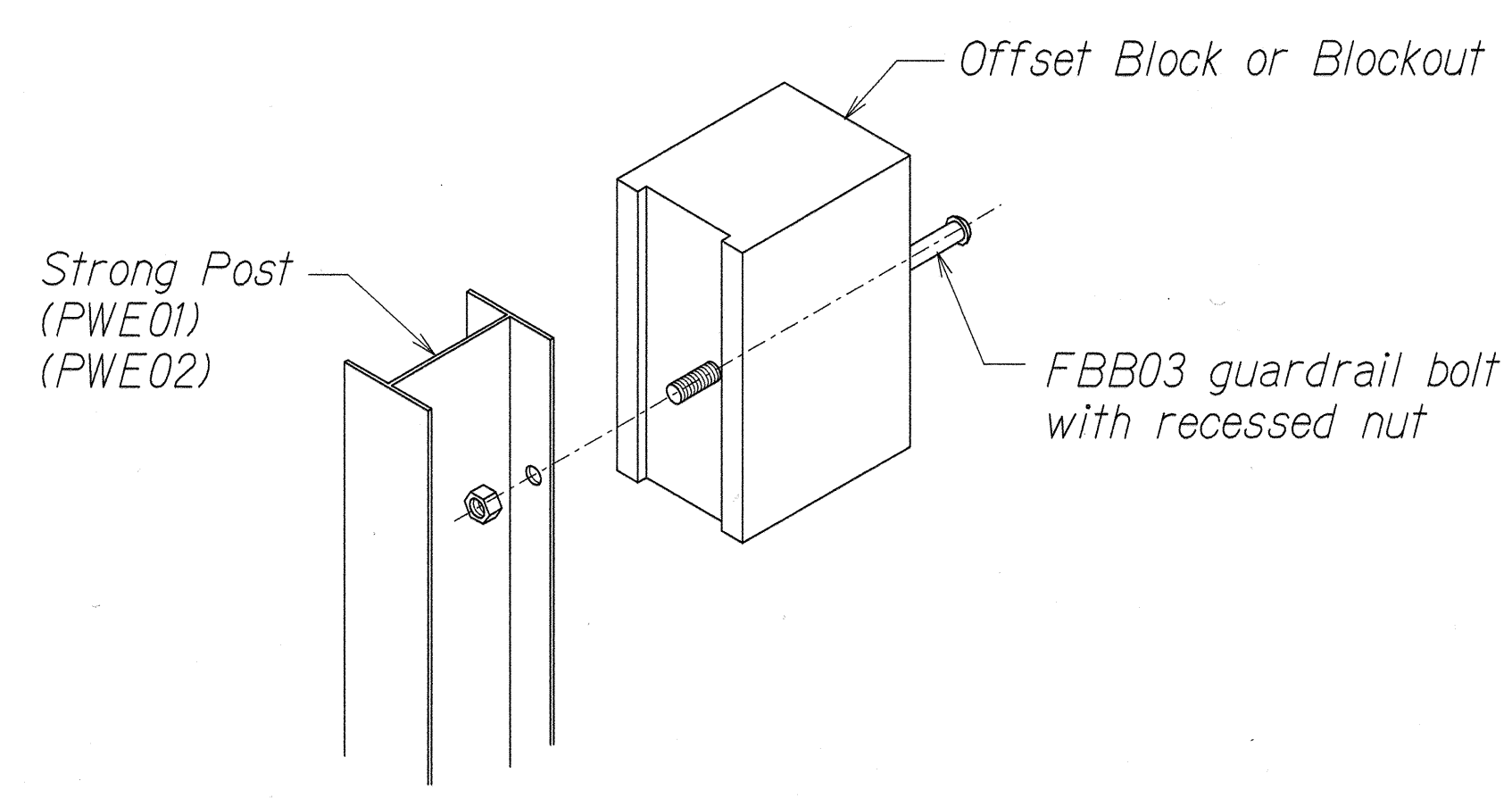


TOP
SIDE
RECYCLED PLASTIC BLOCKOUT (TYPE I)

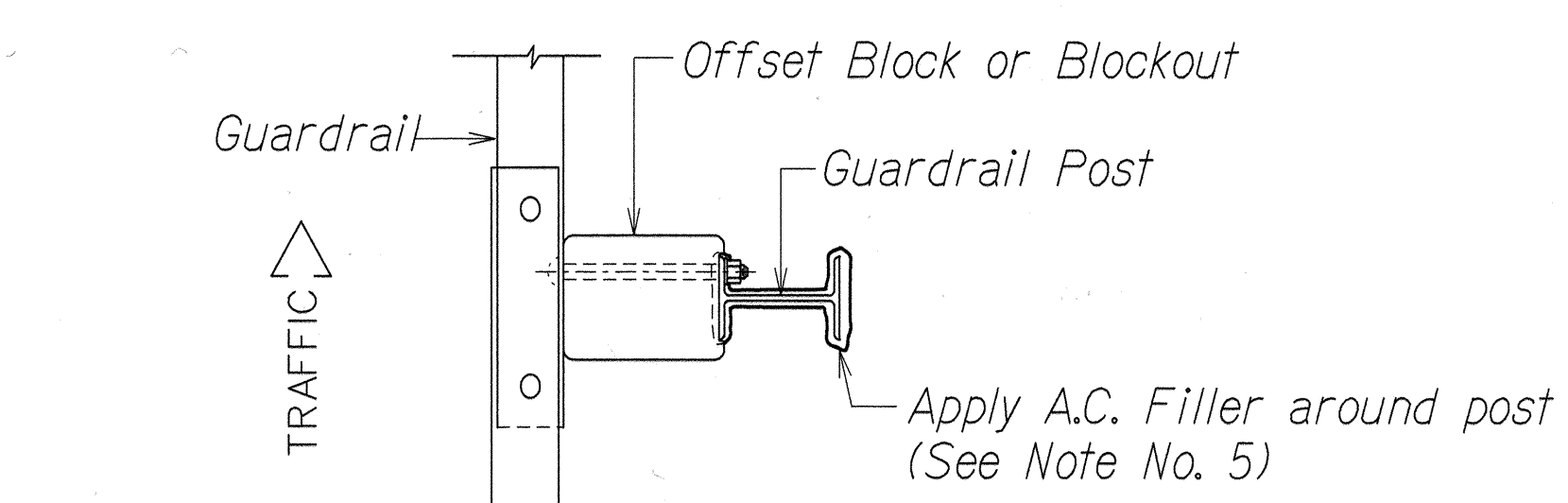


RECYCLED POLYETHYLENE
OFFSET BLOCK (TYPE II)

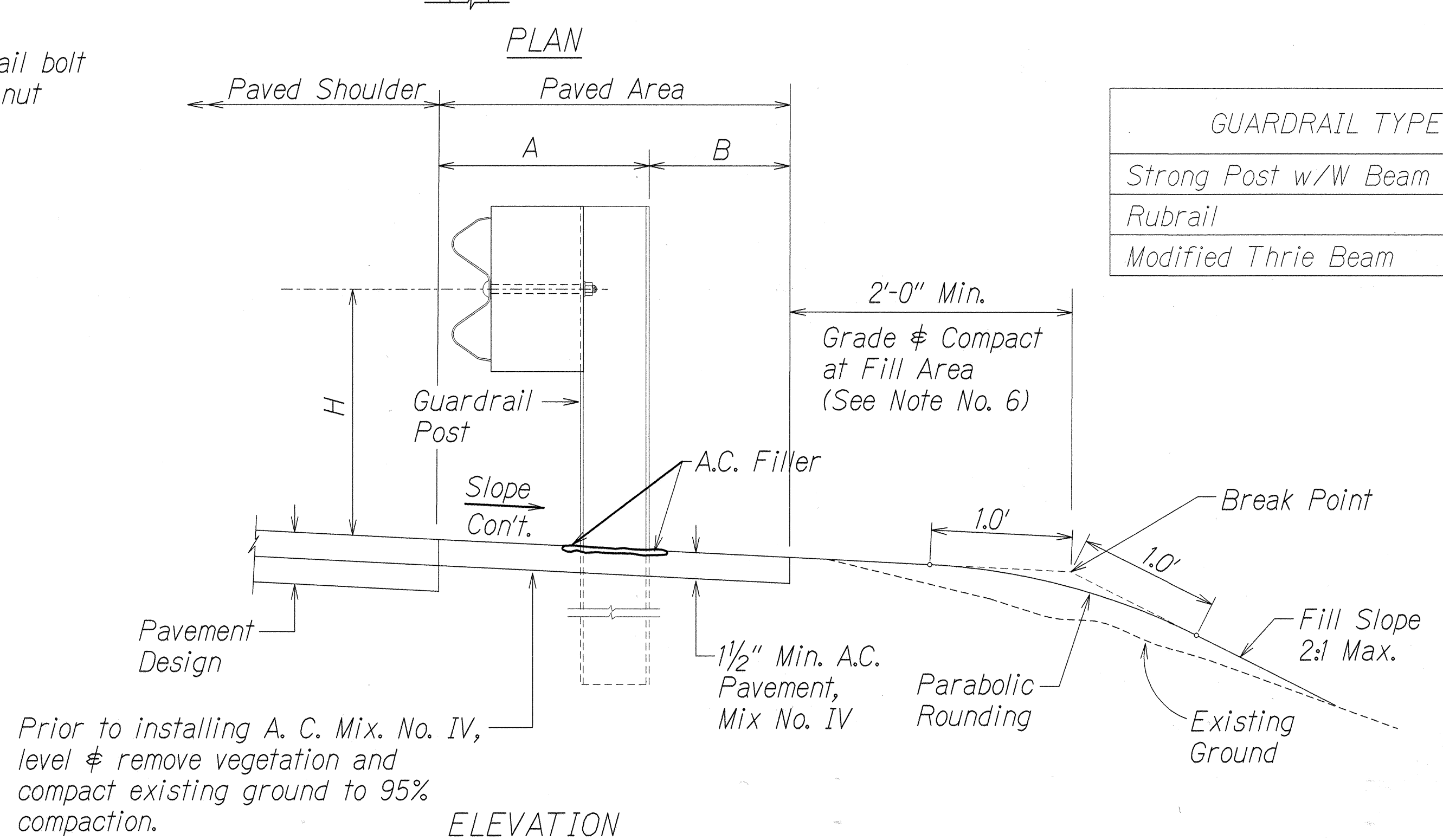
- GENERAL NOTES
- All hardware, posts and fasteners shall be hot-dip zinc coated galvanized after fabrication. No punching, drilling or cutting will be permitted after galvanizing.
 - Where conditions require, special post lengths in increments of 6 inches may be specified.
 - All fasteners, posts, and rail elements (i.e. FBB03, PWE01, RWM02b, etc.) shall conform to the latest edition and amendments of "A Guide to Standardized Highway Barrier Rail Hardware," a report prepared and approved by the AASHTO-AGC-ARTBA Joint Cooperative Committee, Subcommittee On New Highway Materials, Task Force 13 Report. Dimensions of fastners, posts and rail elements have been converted from metric units into their present form.
 - The Recycled Plastic Block or Offset Block shall be approved by the State.
 - After the guardrail posts are installed in the paved area, the Contractor shall apply A.C. Filler around the guardrail post and seal all cracks in the paved area that was caused during the guardrail post installation. If required by the inspector/engineer, the Contractor shall tamper the paved area around the guardrail post prior to applying A.C. filler. The cost for this work shall not be paid for separately, but shall be considered incidental to the various guardrail items.
 - When standards for the fill slope area cannot be met, a site specific, engineer approved design may be used.



Exploded View
(Rail and washer not shown)
STEEL POST AND BLOCK DETAIL



GUARDRAIL TYPE	DIMENSION		
	H	A	B
Strong Post w/W Beam	1'-9 5/8"	1'-6"	1'-0"
Rubrail	2'-0"	1'-6"	2'-0"
Modified Thrie Beam	2'-0"	2'-0"	1'-0"



Prior to installing A. C. Mix. No. IV, level & remove vegetation and compact existing ground to 95% compaction.

ELEVATION
TYPICAL GUARDRAIL INSTALLATION

DESIGNED BY	DATE
DRAWN BY	
CHECKED BY	
IN CHARGE	
NOTE BOOK	
QUANTITIES BY	
CHECKED BY	

13-01-99 ttdrby/guardrail/hs0readgn (standard plan TE-50 103/06/87)

STATE OF HAWAII
DEPARTMENT OF TRANSPORTATION
HIGHWAYS DIVISION

GUARDRAIL DETAILS & NOTES

HANA HIGHWAY
REPLACEMENT OF UAOA BRIDGE AND APPROACHES
DISTRICT OF MAKAWAO
Federal-Aid Project No. BR-036-1(14)

Scale: N.T.S.
Date: May, 1999

SHEET No. C-23 OF 42 SHEETS