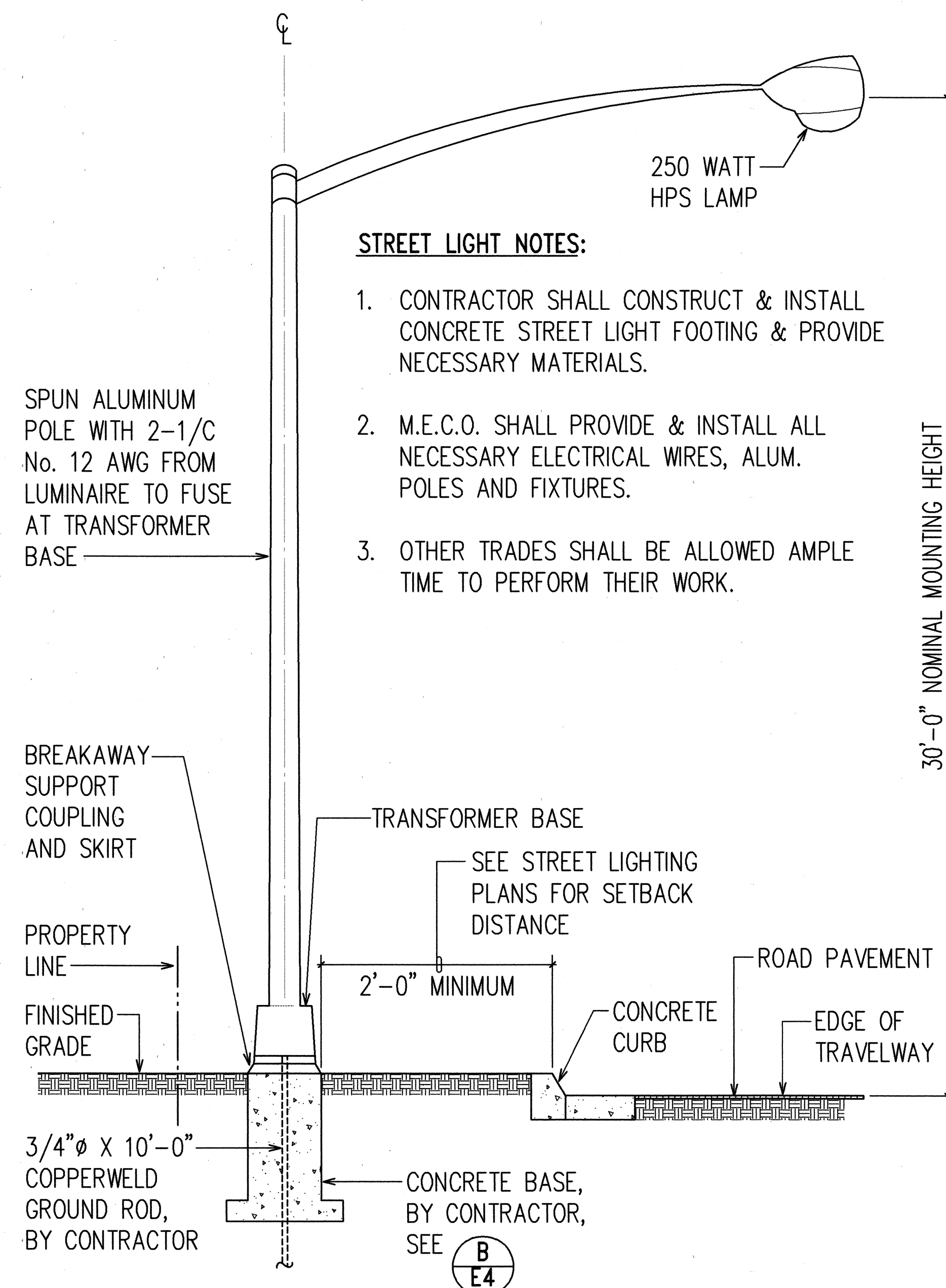
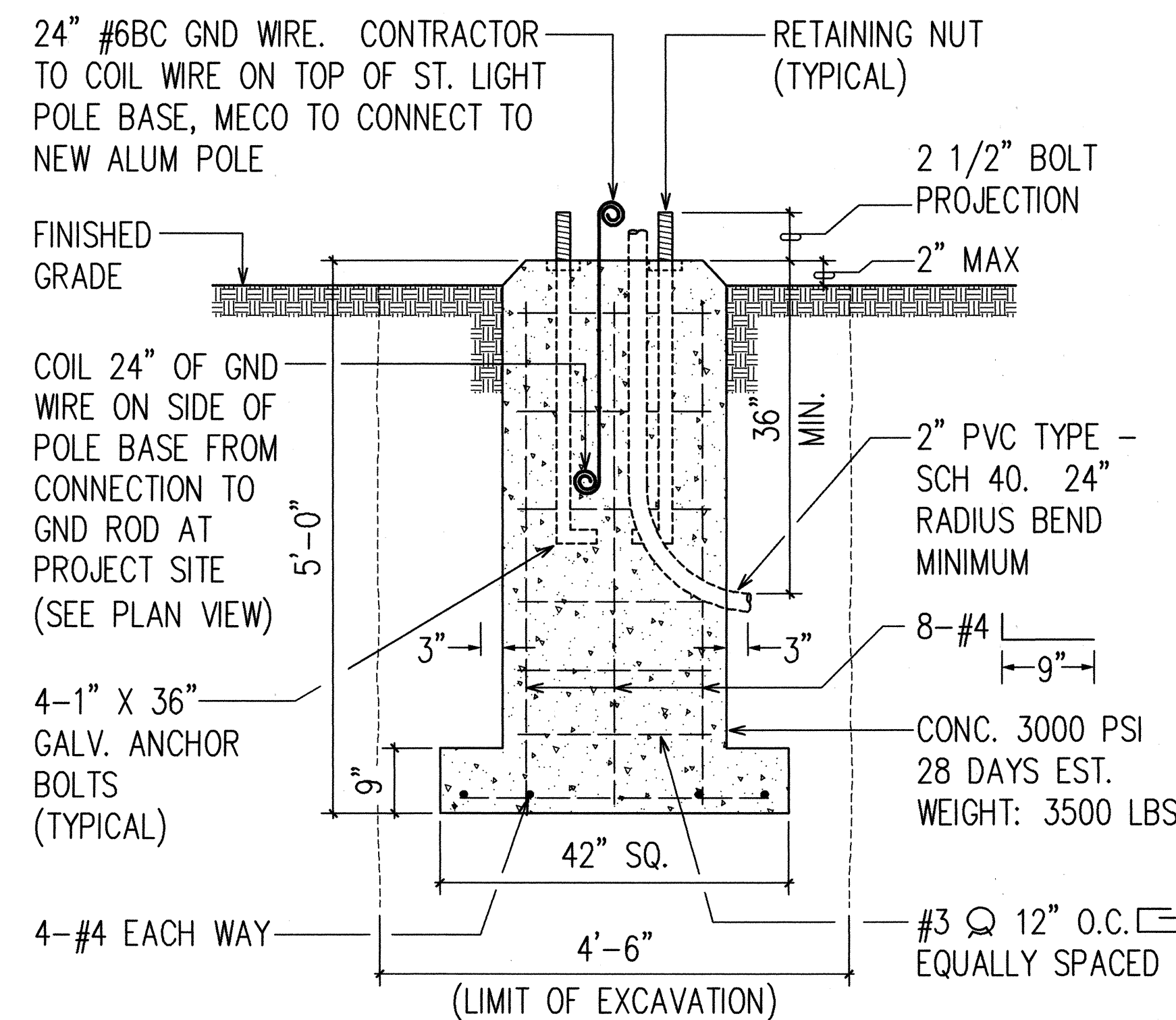


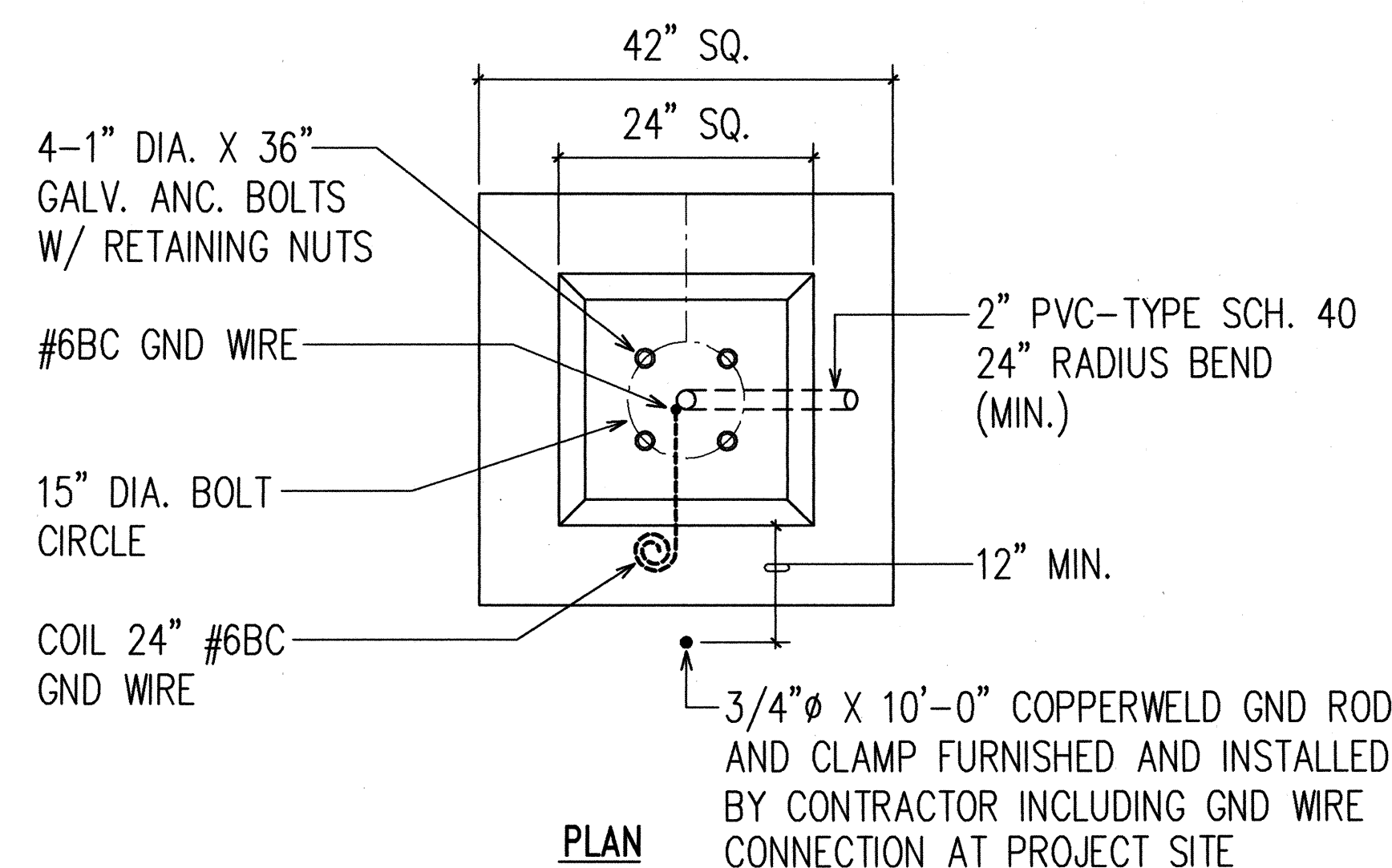
FED. ROAD DIST. NO.	STATE	FED. AID PROJ. NO.	FISCAL YEAR	SHEET NO.	TOTAL SHEETS
HAWAII	HAW.	STP-036-1(12)	2000	29	30



**A**  
E4 **TYPICAL LIGHT STANDARD**  
NOT TO SCALE



**ELEVATION**

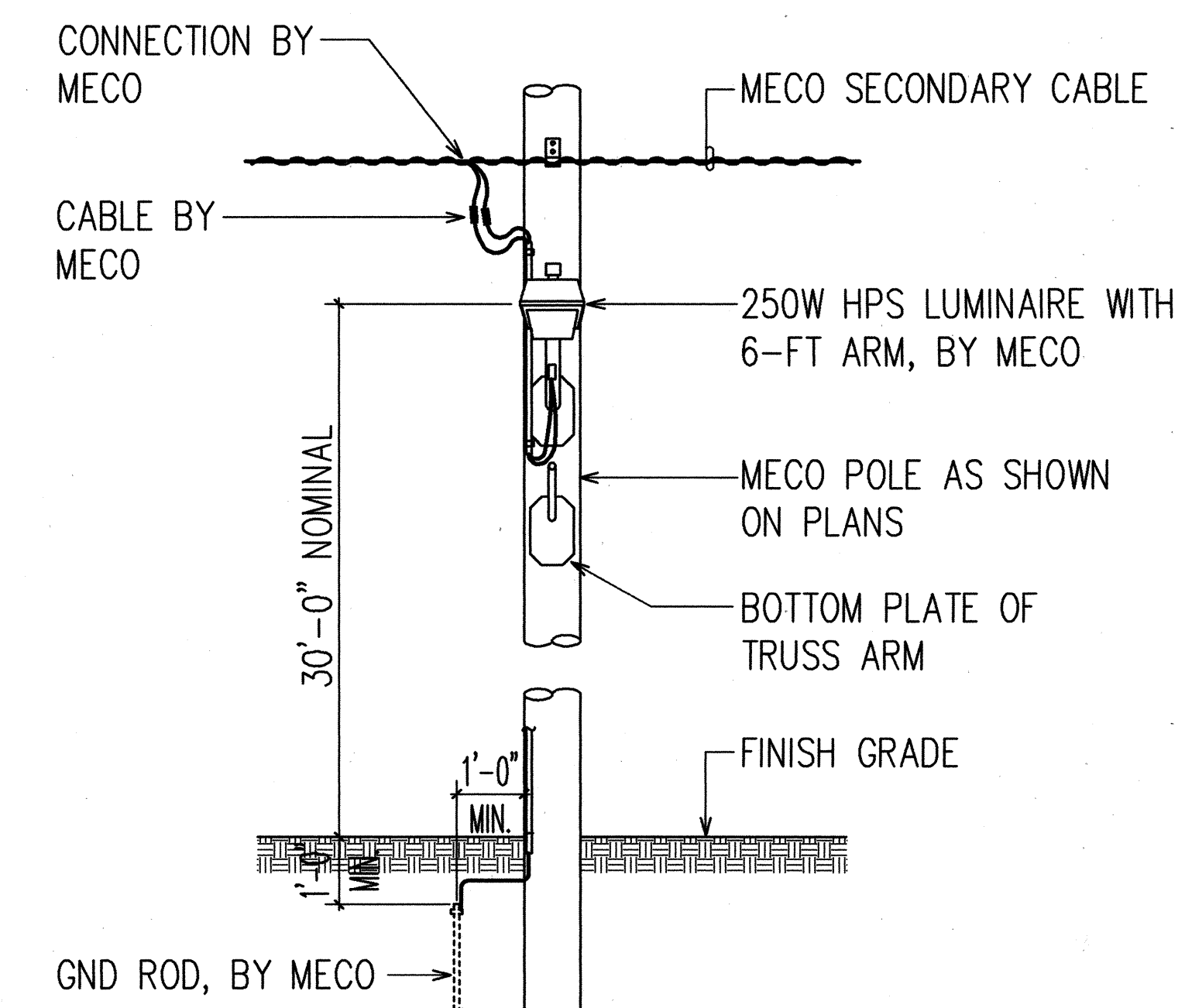


**PLAN**

**NOTES:**

- PRECAST CONCRETE FOOTING IS PREFABRICATED BY WALKER INDUSTRIES AT AMERON MAUI, PH: 877-5068.
- MECO SHALL FURNISH 1" DIA. X 36" ANCHOR BOLTS (4 EACH) AS FURNISHED BY MANUFACTURER. PICK-UP BY CONTRACTOR AT MECO'S KAHULUI WAREHOUSE.
- INSPECTION BY MECO INSPECTOR REQUIRED PRIOR TO FABRICATION OF FOOTING. CONTACT MECO INSPECTOR (PH: 871-8461)

**B**  
E4 **PRECAST CONCRETE FOOTING STREET LIGHT POLE BASE TRANSFORMER TYPE-WITH BREAKAWAY COUPLING (STATE HIGHWAY)**  
NOT TO SCALE



**C**  
E4 **TYPICAL STREET LIGHT ELEVATION AT TANGENT POLE**  
NOT TO SCALE



THIS WORK WAS PREPARED BY ME  
UNDER MY SUPERVISION  
Signature  
19 AUG 1998

STATE OF HAWAII  
DEPARTMENT OF TRANSPORTATION  
HIGHWAYS DIVISION  
**STREET LIGHT DETAILS**

HANA HIGHWAY  
INTERSECTION IMPROVEMENTS  
AT HOBRON AVENUE  
FAP NO. STP-036-1 (12)

SCALE: AS NOTED DATE: MAR. 1999

**SHEET No. E4 OF E5 SHEETS**