

**STATE RIGHT-OF-WAY
BACKFILL NOTES**

NOT TO SCALE

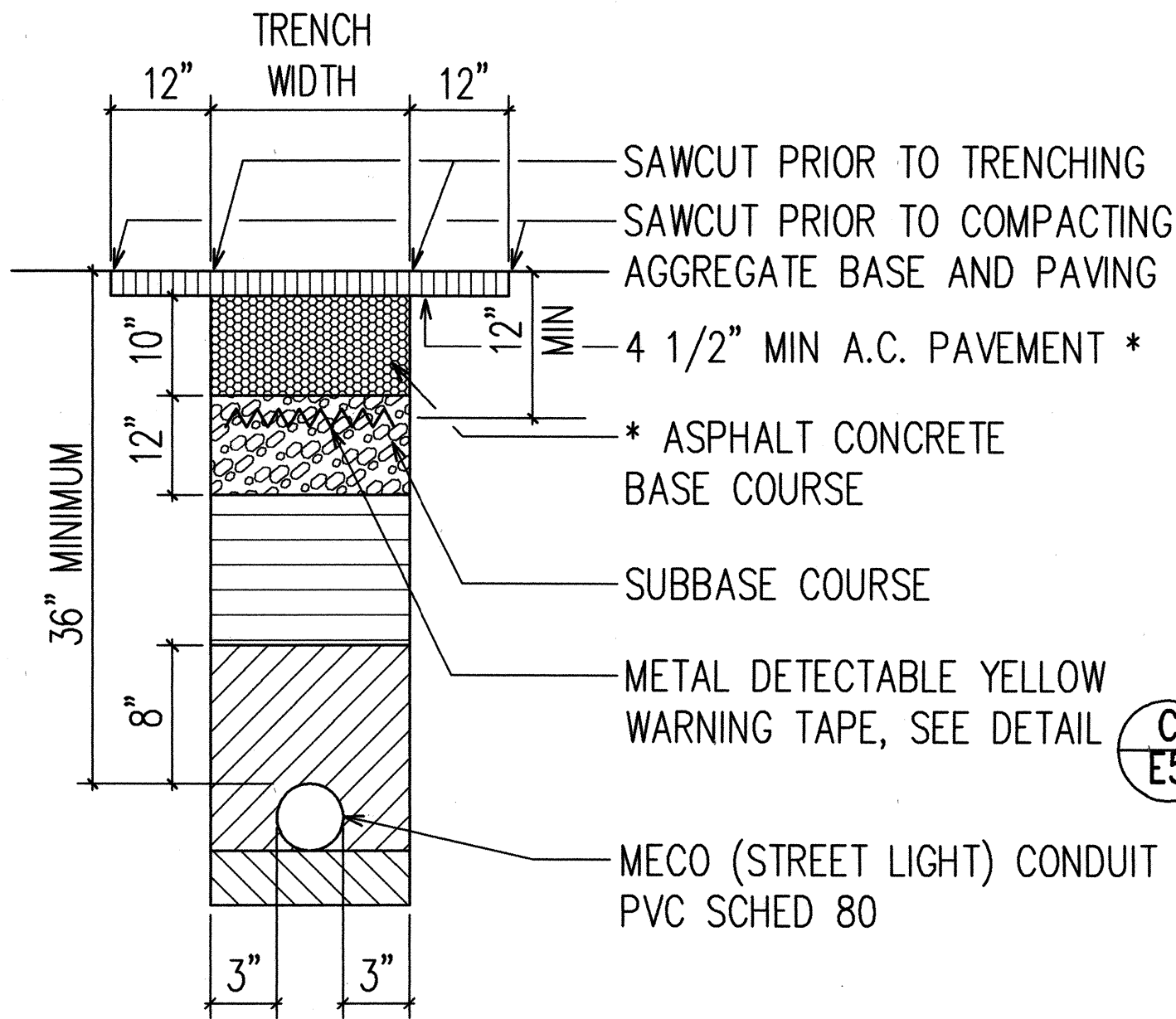
- ▨ TRENCH BACKFILL MATERIAL "B"
1. SAND EQUIVALENT ≥ 2
2. 8" MAXIMUM LIFT LOOSE
3. 95% COMPACTION

- ▨ TRENCH BACKFILL MATERIAL "A"
1. SAND EQUIVALENT ≥ 20
2. 8" MAXIMUM LIFT LOOSE
3. 95% COMPACTION

- ▨ IF MATERIAL BELOW DUCT IS
NOT EQUIVALENT TO BACKFILL
MATERIAL "A", EXCAVATE
MATERIAL AND PROVIDE 3"
BACKFILL MATERIAL "A".
SEE ABOVE

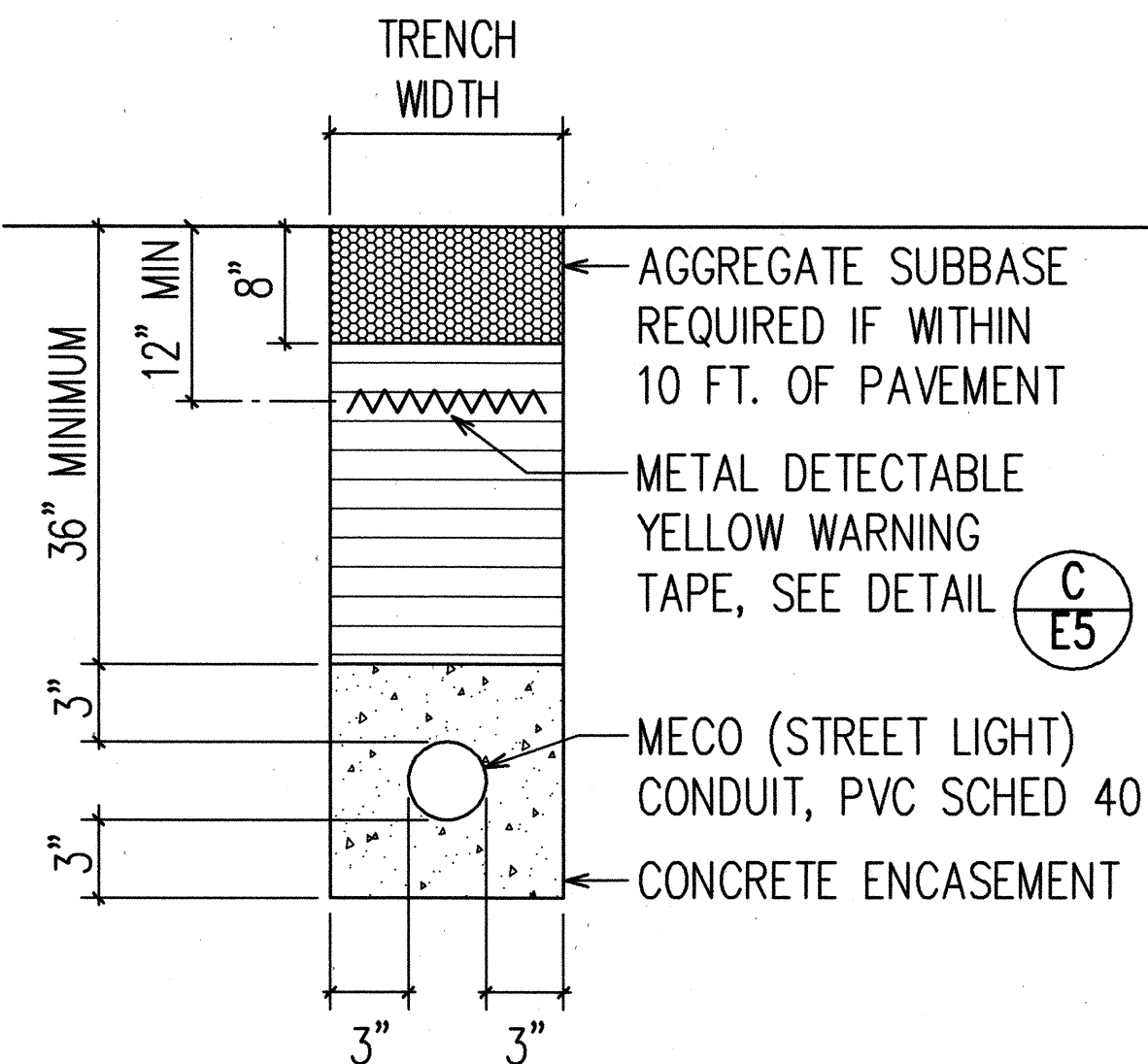
- ▨ CONCRETE - 3" ENCASEMENT
2500 PSI COMPRESSIVE
STRENGTH @ 28 DAYS

NOTE: BASE COURSE AND SUB-BASE
COURSE PER 1994 STATE
STANDARD SPECIFICATIONS FOR
HIGHWAY CONSTRUCTION.

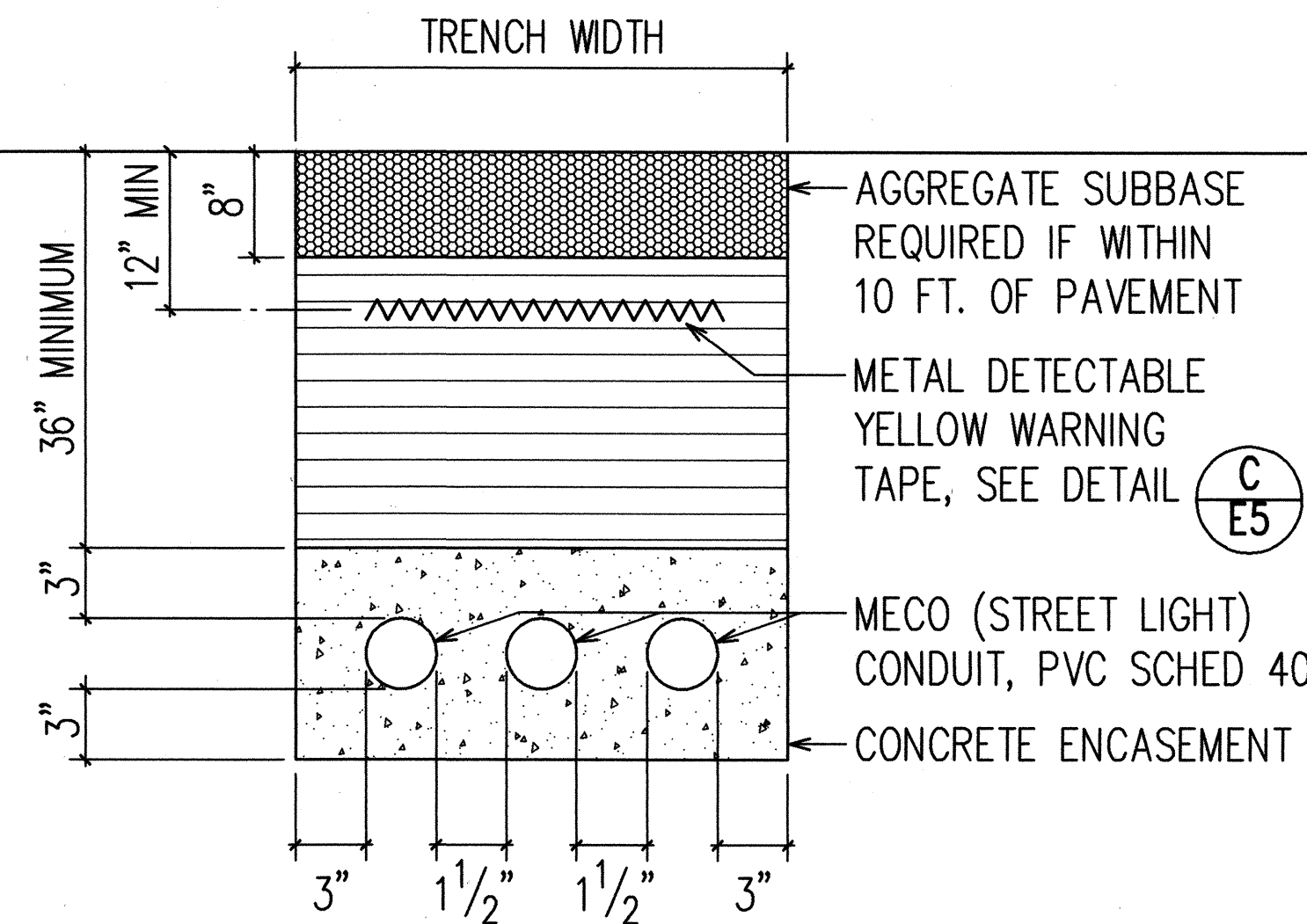


* A.C. AND BASE COURSE TO MATCH EXISTING THICKNESS OR
THE MINIMUM THICKNESS SHOWN, WHICHEVER IS GREATER.

(A) DUCT SECTION
WITHIN STATE RIGHT-OF-WAY
UNDER EXISTING ROADWAY AND
PAVED SHOULDER

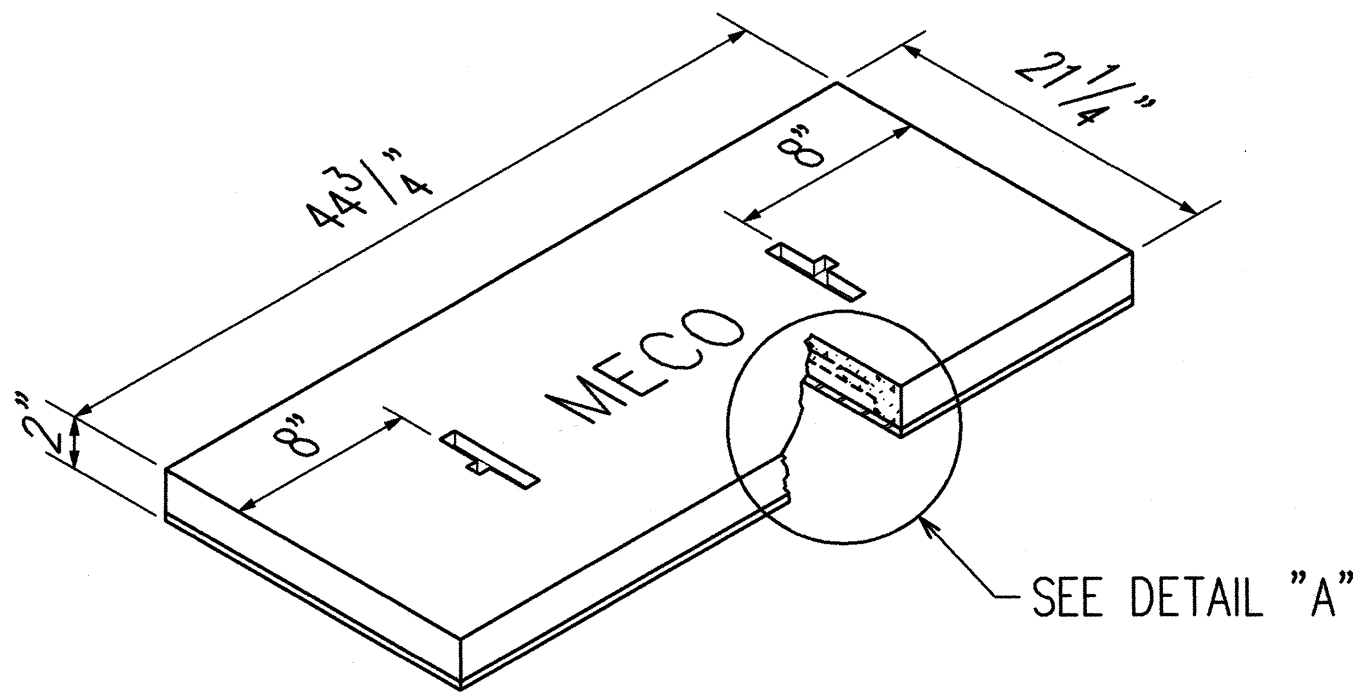


(B) DUCT SECTION
WITHIN STATE RIGHT-OF-WAY
UNDER UNPAVED SHOULDER



(C) DUCT SECTION
WITHIN STATE RIGHT-OF-WAY
UNDER UNPAVED SHOULDER

DUCT SECTION DETAILS
NOT TO SCALE

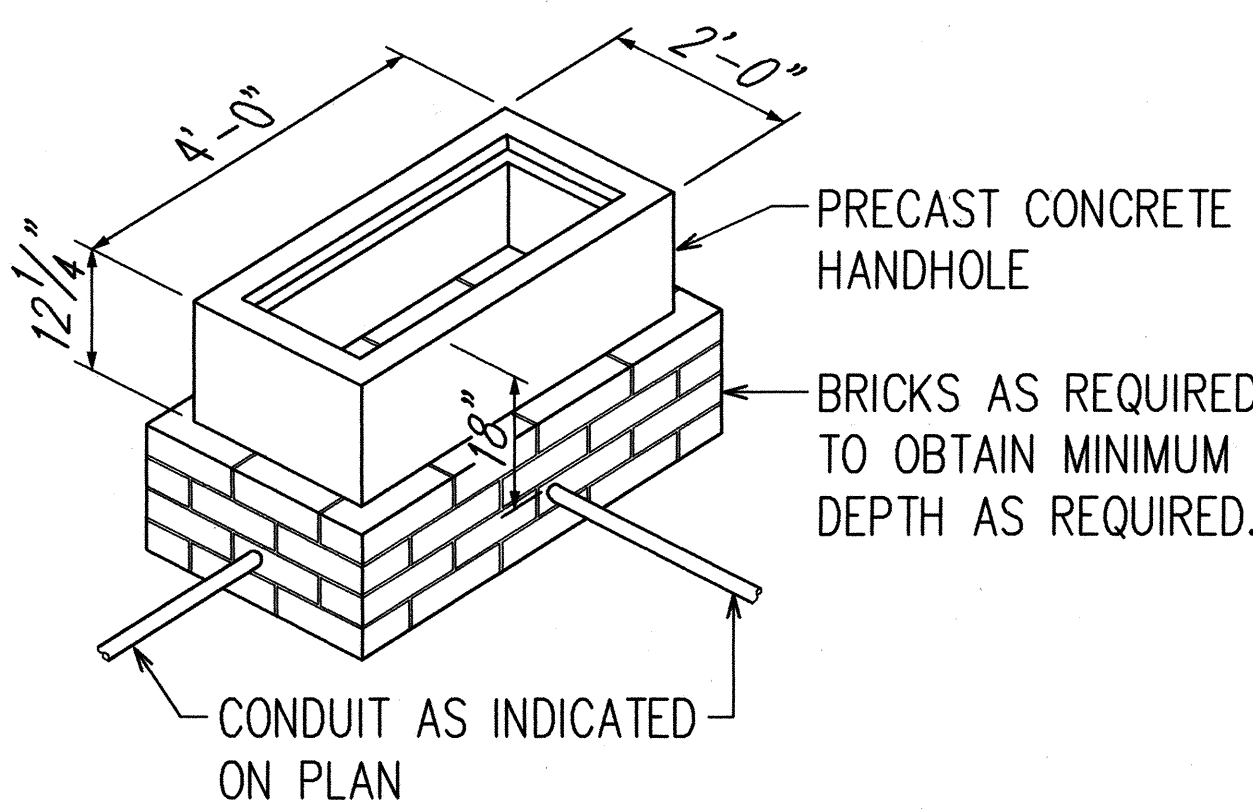


2" X 2" X 14/14 GA.
WIRE MESH

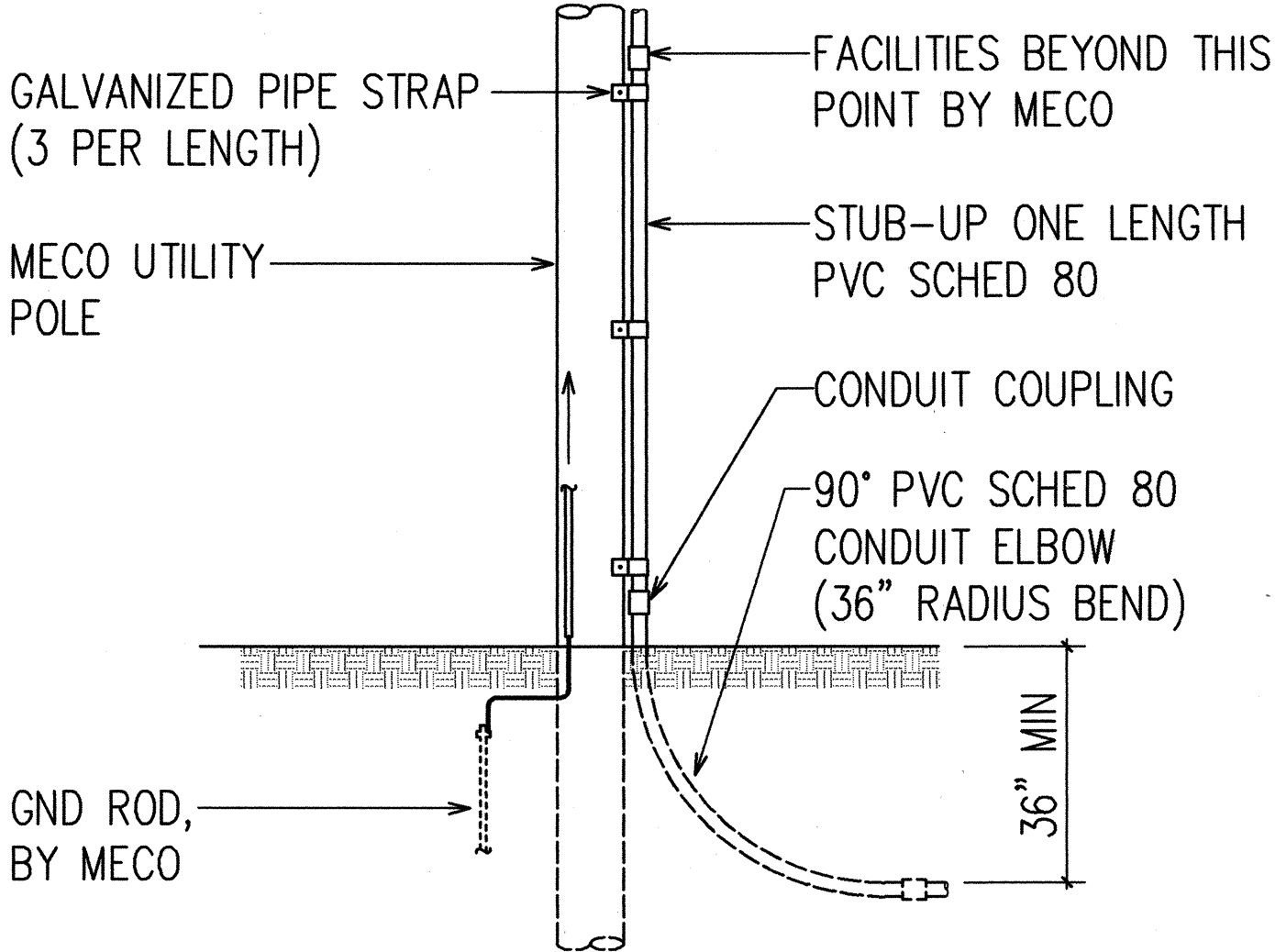
3-#4 WELDED TRANSVERSELY
TO THE PLATE

BL 44 3/4" X 1/4" X 21 1/4"

DETAIL "A"



(A) 2' X 4' HANDHOLE DETAIL
NOT TO SCALE



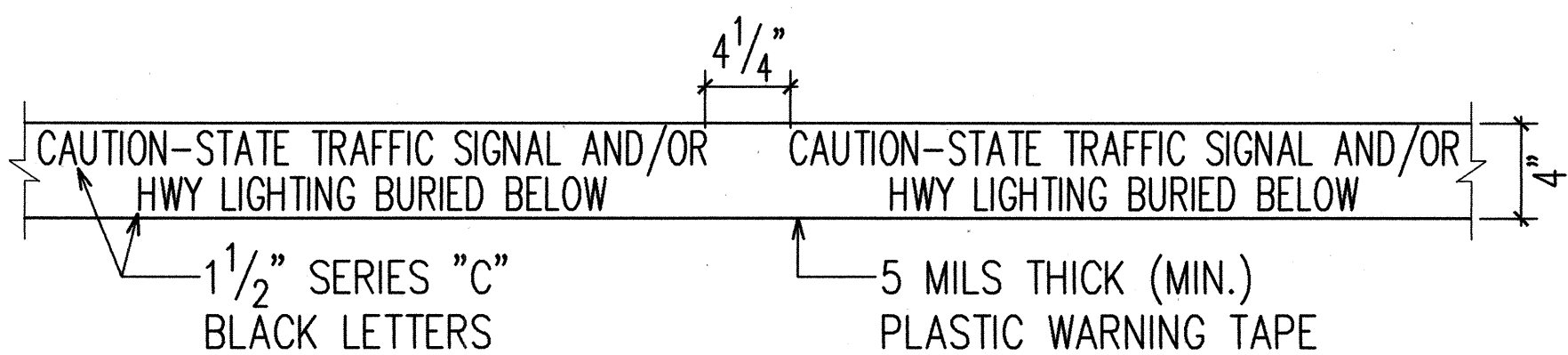
(B) TYPICAL POLE RISER DETAIL
NOT TO SCALE

FED. ROAD DIST. NO.	STATE	FED. AID PROJ. NO.	FISCAL YEAR	SHEET NO.	TOTAL SHEETS
HAWAII	HAW.	STP-036-1(12)	2000	30	30

CONDUIT SCHEDULE

2L	2"C, MECO (STREET LIGHTING) WITH PULLWIRE
3-2L	3-2"C, MECO (STREET LIGHTING) WITH PULLWIRE

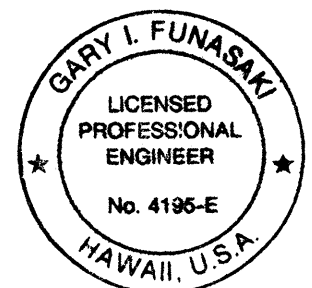
NOTE: SEE DUCT SECTIONS FOR CONDUIT TYPE



NOTE:

1. THE METAL DETECTABLE YELLOW PLASTIC WARNING TAPE SHALL BE
A MINIMUM 5 MILS THICK AND 4" WIDE WITH A CONTINUOUS METALLIC
BACKING AND CORROSION RESISTANT 1± MIL THICK FOIL CORE.
THE MESSAGE ON THE TAPE SHALL READ, "CAUTION - STATE TRAFFIC
SIGNAL AND/OR HWY LIGHTING BURIED BELOW", UTILIZING 1 1/2 INCHES
SERIES "C" BLACK LETTERING. THE MESSAGE WILL BE REPEATED WITH
A 4 1/4" SPACING BETWEEN TOP LINE OF MESSAGE AND START OF NEXT
REPEAT.

**(C) METAL DETECTABLE YELLOW
PLASTIC WARNING TAPE**
NOT TO SCALE



THIS WORK WAS PREPARED BY ME
UNDER MY SUPERVISION
19 AUG 1999
Signature

STATE OF HAWAII
DEPARTMENT OF TRANSPORTATION
HIGHWAYS DIVISION
DUCT SECTIONS, HANDHOLE DETAIL

HANA HIGHWAY
INTERSECTION IMPROVEMENTS
AT HOBRON AVENUE
FAP NO. STP-036-1 (12)
SCALE: AS NOTED DATE: MAR. 1999
SHEET No. E5 OF E5 SHEETS